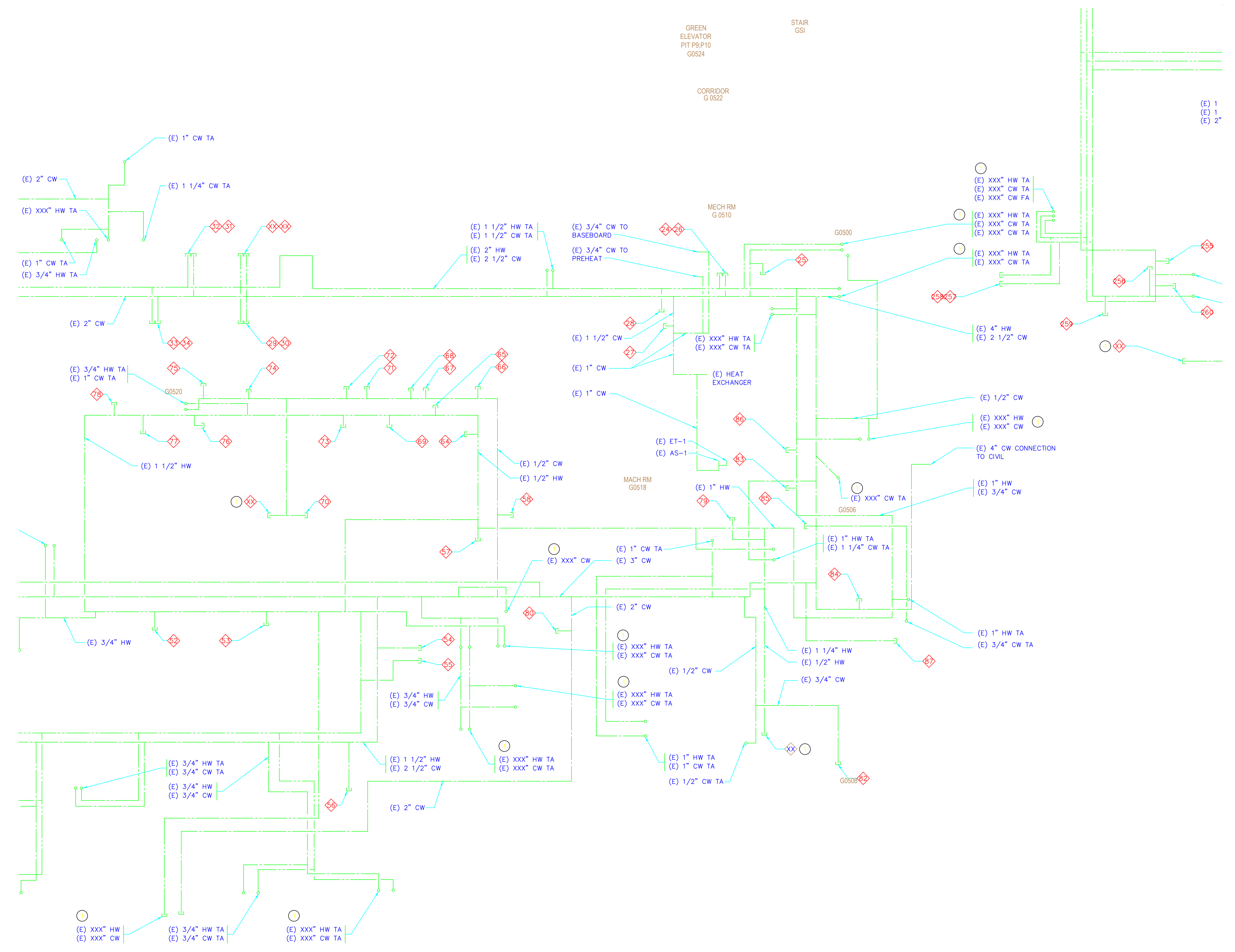


| |
|-----|
| QC |
| INI |
| % |
| |
| |
| |
| |
| |
| |
| |

- DEAD LEG LOCATIONS:
- ① (E) 3/4" CW COPPER VALVED AND CAPPED AT 10' AFF
 - ② (E) 3/4" CW COPPER VALVED AND CAPPED AT 10' AFF
 - ③ (E) 3/4" HW COPPER VALVED AND CAPPED AT 10' AFF
 - ④ (E) 1 1/2" CW COPPER CAPPED AT 9' AFF
 - ⑤ (E) 1" HW COPPER VALVED OFF, NO CAPPED AT 8' AFF
 - ⑥ (E) 3/4" CW COPPER BULL HEAD TEE
 - ⑦ (E) 3/4" HW COPPER BULL HEAD TEE
 - ⑧ (E) 1/2" CW COPPER CAPPED
 - ⑨ (E) 1/2" HW COPPER CAPPED
 - ⑩ (E) 1/2" CW COPPER CAPPED
 - ⑪ (E) 1/2" HW COPPER CAPPED
 - ⑫ (E) 1/2" CW COPPER VALVED AND CAPPED
 - ⑬ (E) 1/2" HW COPPER VALVED AND CAPPED
 - ⑭ (E) 3/4" HW COPPER VALVED
 - ⑮ (E) 3/4" HW COPPER VALVED (REMOVE MIXING VALVE)
 - ⑯ (E) 3/4" CW COPPER VALVED
 - ⑰ (E) 1/2" CW COPPER VALVED AND CAPPED
 - ⑱ (E) 1/2" HW COPPER VALVED AND CAPPED
 - ⑲ (E) 1/2" CW COPPER VALVED AND CAPPED
 - ⑳ (E) 1/2" HW COPPER VALVED AND CAPPED
 - ㉑ (E) 1/2" CW COPPER VALVED
 - ㉒ (E) 3/4" HW COPPER VALVED
 - ㉓ (E) 1/2" CW COPPER CAPPED
 - ㉔ (E) 1/2" HW COPPER CAPPED
 - ㉕ (E) 1/2" CW COPPER CAPPED
 - ㉖ (E) 1/2" HW COPPER CAPPED
 - ㉗ (E) 1 1/2" CW COPPER CAPPED
 - ㉘ (E) 1/2" CW COPPER CAPPED
 - ㉙ (E) 1/2" HW COPPER CAPPED
 - ㉚ (E) 1/2" CW COPPER CAPPED
 - ㉛ (E) 1/2" HW COPPER CAPPED
 - ㉜ (E) 1/2" CW COPPER CAPPED
 - ㉝ (E) 1/2" HW COPPER CAPPED
 - ㉞ (E) 1/2" CW COPPER CAPPED
 - ㉟ (E) 1/2" HW COPPER CAPPED
 - ㊱ (E) 1 1/4" CW COPPER VALVED AND CAPPED OFF
 - ㊲ (E) 1/2" CW COPPER CAPPED
 - ㊳ (E) 1/2" CW COPPER CAPPED
 - ㊴ (E) 1/2" HW COPPER CAPPED
 - ㊵ (E) 1/2" CW COPPER CAPPED
 - ㊶ (E) 1/2" HW COPPER CAPPED
 - ㊷ (E) 1/2" CW COPPER CAPPED
 - ㊸ (E) 1/2" HW COPPER CAPPED
 - ㊹ (E) 1/2" CW COPPER CAPPED
 - ㊺ (E) 1/2" HW COPPER CAPPED
 - ㊻ (E) 2" CW COPPER CAPPED
 - ㊼ (E) 1/2" CW COPPER VALVED OFF, NO CAP
 - ㊽ (E) 3/4" HW COPPER VALVED AND CAPPED
 - ㊾ (E) 3/4" CW COPPER VALVED AND CAPPED
 - ㊿ (E) 3/4" CW COPPER VALVED AND CAPPED
 - ① (E) 1/2" HW COPPER VALVED AND CAPPED
 - ② (E) 3/4" CW COPPER VALVED OFF, NO CAP



SHEET NOTES:
 ① PIPE SIZES NOT KNOWN.

BASEMENT EXISTING
 PLUMBING FLOOR PLAN