

one eighth inch = one foot
one quarter inch = one foot
three eighths inch = one foot
one half inch = one foot
three quarters inch = one foot
one inch = one foot
one and one half inches = one foot
three inches = one foot

No.	Description	Date
1	CPR 206	01/24/2012
2	CPR 296	08/06/2012

VIA FORM 08-6231, OCT 1978

CONSULTANTS:

Professional Seals:



ARCHITECT/ENGINEERS:



145 Lincoln Avenue
Winter Park, Florida 32789
1001 G Street, NW, Suite 1000
Washington, D.C. 20001
407.647.1039
202.654.9300

Drawing Title
HOSPITAL / CLINIC
ROOF DETAILS

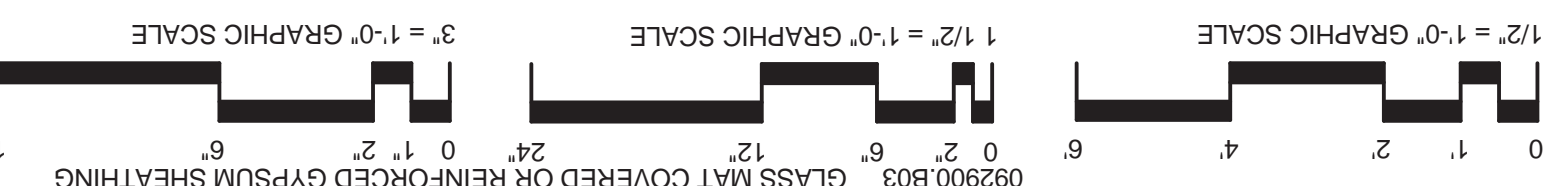
Approved: Project Director
Mark A. Beck

Project Title
A NEW HOSPITAL FOR
VAMC ORLANDO, FLORIDA

Location Orlando, Florida	Date 04 JUNE, 2010	Checked BKH	Drawn EB / RLF
Project Number 673-950	Building Number 01 AND 02	Drawing Number H-AES.502	Dwg. 1075 of 4322

Department of
Veterans Affairs
OFFICE OF
FACILITIES
MANAGEMENT

BUILDING IS FULLY SPRINKLERED



- 072113.10 BLANKET INSULATION, UNFACED
074213.A04C FACTORY INSULATED WALL PANEL 2" THICK
074213.A05C FACTORY INSULATED WALL PANEL 3" THICK
075216.H10 MODIFIED BITUMEN WALL FLASHING
075423.A01 SINGLE PLY THERMOPLASTIC ROOFING SYSTEM
076200.M08 PARAPET COPING SYSTEM
079200.001 JOINT SEALANT
079200.002 BACKSTOP AND SEALANT
079513.Q10 SEAL
084413.A01 GLAZED ALUMINUM CURTAIN WALL
084413.T08 CURTAIN WALL ANCHOR
082216.D04C STEEL STUD 4"
082525.A01 HYDRAULIC LIMPE PLASTERING
082900.A02C GYPSUM BOARD, FIRE RESISTANT 5/8"
082900.B01C GYPSUM BOARD, GLASS MAT FACED 5/8"
082900.B03 GLASS MAT COVERED OR REINFORCED GYPSUM SHEATHING

- 033000.B05 BONDED CONCRETE TOPPING
034500.A03 PRECAST CONCRETE WALL PANEL
051200.A03 STEEL TUBE COLUMN
051200.B03 STEEL STUD RUNNER TRACK
054000.C01 STEEL STUD 4"
054000.D08C BOLT
055000.T01 EXPANSION BOLT
061000.C12 CONTINUOUS PRESSURE TREATED WOOD BLOCKING
071413.A01 WATERPROOFING MEMBRANE
071413.A02 DECK PAVERS AND PEDESTALS
071413.A03 PROTECTIVE MEMBRANE ROOFING INSULATION
071413.B02 SPRAY FOAM INSULATION
072113.A01 SPRAY FOAM INSULATION

- 072113.10 BLANKET INSULATION, UNFACED
074213.A04C FACTORY INSULATED WALL PANEL 2" THICK
074213.A05C FACTORY INSULATED WALL PANEL 3" THICK
075216.H10 MODIFIED BITUMEN WALL FLASHING
075423.A01 SINGLE PLY THERMOPLASTIC ROOFING SYSTEM
076200.M08 PARAPET COPING SYSTEM
079200.001 JOINT SEALANT
079200.002 BACKSTOP AND SEALANT
079513.Q10 SEAL
084413.A01 GLAZED ALUMINUM CURTAIN WALL
084413.T08 CURTAIN WALL ANCHOR
082216.D04C STEEL STUD 4"
082525.A01 HYDRAULIC LIMPE PLASTERING
082900.A02C GYPSUM BOARD, FIRE RESISTANT 5/8"
082900.B01C GYPSUM BOARD, GLASS MAT FACED 5/8"
082900.B03 GLASS MAT COVERED OR REINFORCED GYPSUM SHEATHING

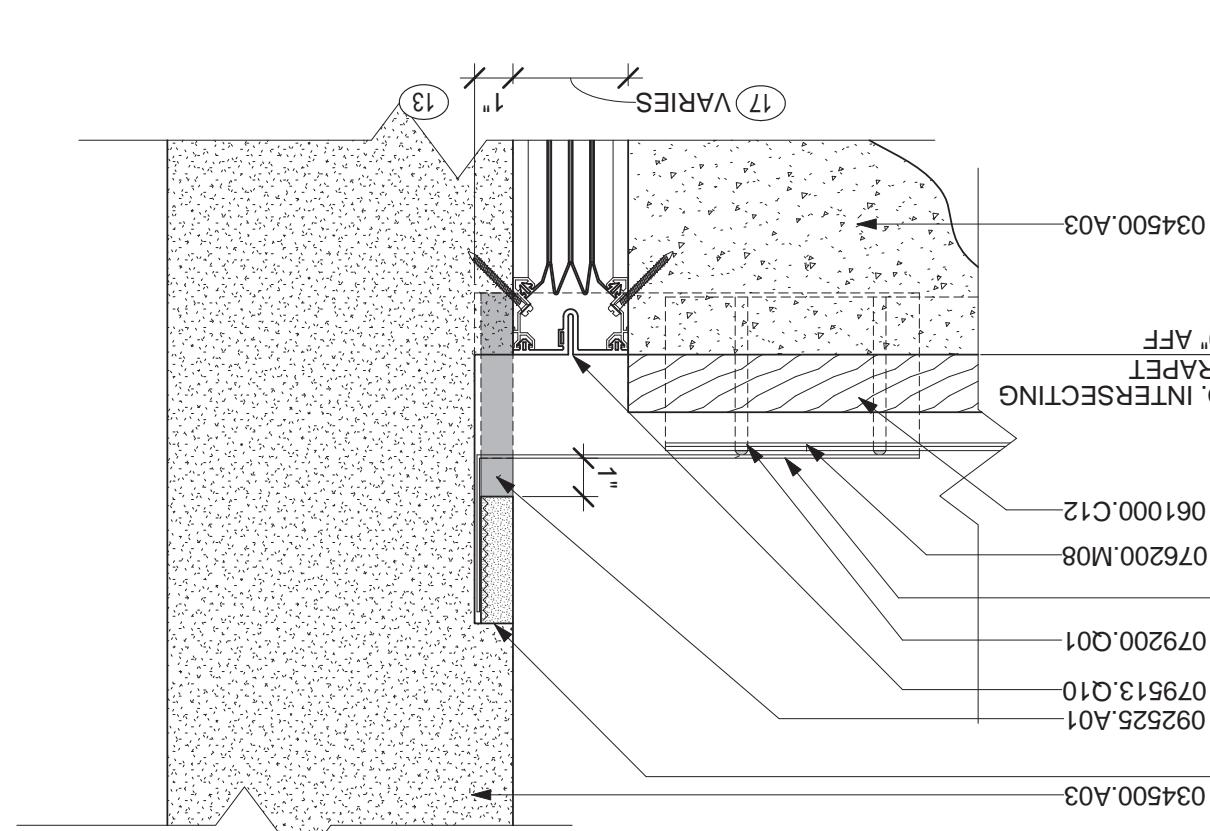
- 072113.10 BLANKET INSULATION, UNFACED
074213.A04C FACTORY INSULATED WALL PANEL 2" THICK
074213.A05C FACTORY INSULATED WALL PANEL 3" THICK
075216.H10 MODIFIED BITUMEN WALL FLASHING
075423.A01 SINGLE PLY THERMOPLASTIC ROOFING SYSTEM
076200.M08 PARAPET COPING SYSTEM
079200.001 JOINT SEALANT
079200.002 BACKSTOP AND SEALANT
079513.Q10 SEAL
084413.A01 GLAZED ALUMINUM CURTAIN WALL
084413.T08 CURTAIN WALL ANCHOR
082216.D04C STEEL STUD 4"
082525.A01 HYDRAULIC LIMPE PLASTERING
082900.A02C GYPSUM BOARD, FIRE RESISTANT 5/8"
082900.B01C GYPSUM BOARD, GLASS MAT FACED 5/8"
082900.B03 GLASS MAT COVERED OR REINFORCED GYPSUM SHEATHING

- 072113.10 BLANKET INSULATION, UNFACED
074213.A04C FACTORY INSULATED WALL PANEL 2" THICK
074213.A05C FACTORY INSULATED WALL PANEL 3" THICK
075216.H10 MODIFIED BITUMEN WALL FLASHING
075423.A01 SINGLE PLY THERMOPLASTIC ROOFING SYSTEM
076200.M08 PARAPET COPING SYSTEM
079200.001 JOINT SEALANT
079200.002 BACKSTOP AND SEALANT
079513.Q10 SEAL
084413.A01 GLAZED ALUMINUM CURTAIN WALL
084413.T08 CURTAIN WALL ANCHOR
082216.D04C STEEL STUD 4"
082525.A01 HYDRAULIC LIMPE PLASTERING
082900.A02C GYPSUM BOARD, FIRE RESISTANT 5/8"
082900.B01C GYPSUM BOARD, GLASS MAT FACED 5/8"
082900.B03 GLASS MAT COVERED OR REINFORCED GYPSUM SHEATHING

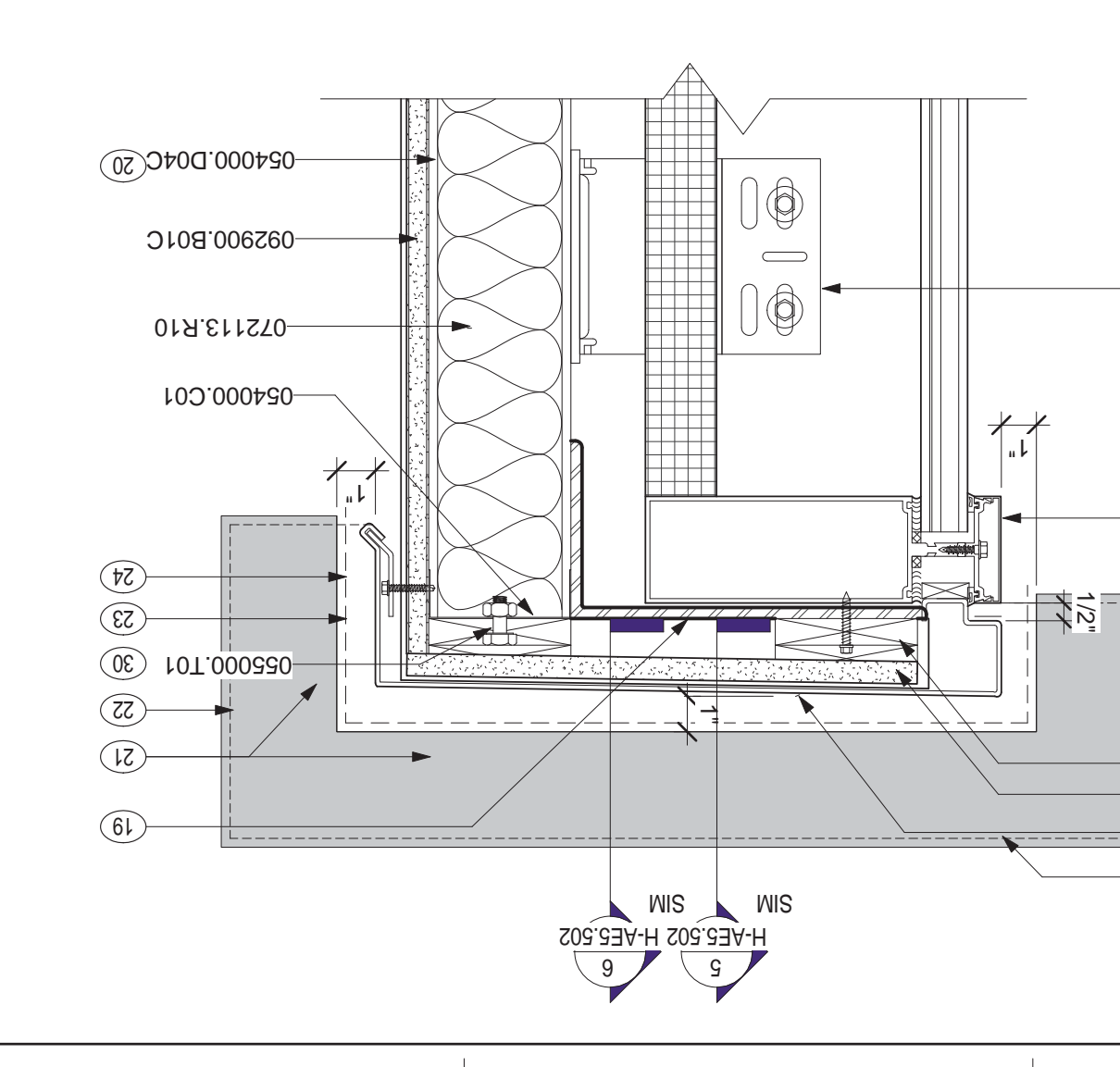
- 072113.10 BLANKET INSULATION, UNFACED
074213.A04C FACTORY INSULATED WALL PANEL 2" THICK
074213.A05C FACTORY INSULATED WALL PANEL 3" THICK
075216.H10 MODIFIED BITUMEN WALL FLASHING
075423.A01 SINGLE PLY THERMOPLASTIC ROOFING SYSTEM
076200.M08 PARAPET COPING SYSTEM
079200.001 JOINT SEALANT
079200.002 BACKSTOP AND SEALANT
079513.Q10 SEAL
084413.A01 GLAZED ALUMINUM CURTAIN WALL
084413.T08 CURTAIN WALL ANCHOR
082216.D04C STEEL STUD 4"
082525.A01 HYDRAULIC LIMPE PLASTERING
082900.A02C GYPSUM BOARD, FIRE RESISTANT 5/8"
082900.B01C GYPSUM BOARD, GLASS MAT FACED 5/8"
082900.B03 GLASS MAT COVERED OR REINFORCED GYPSUM SHEATHING

- 072113.10 BLANKET INSULATION, UNFACED
074213.A04C FACTORY INSULATED WALL PANEL 2" THICK
074213.A05C FACTORY INSULATED WALL PANEL 3" THICK
075216.H10 MODIFIED BITUMEN WALL FLASHING
075423.A01 SINGLE PLY THERMOPLASTIC ROOFING SYSTEM
076200.M08 PARAPET COPING SYSTEM
079200.001 JOINT SEALANT
079200.002 BACKSTOP AND SEALANT
079513.Q10 SEAL
084413.A01 GLAZED ALUMINUM CURTAIN WALL
084413.T08 CURTAIN WALL ANCHOR
082216.D04C STEEL STUD 4"
082525.A01 HYDRAULIC LIMPE PLASTERING
082900.A02C GYPSUM BOARD, FIRE RESISTANT 5/8"
082900.B01C GYPSUM BOARD, GLASS MAT FACED 5/8"
082900.B03 GLASS MAT COVERED OR REINFORCED GYPSUM SHEATHING

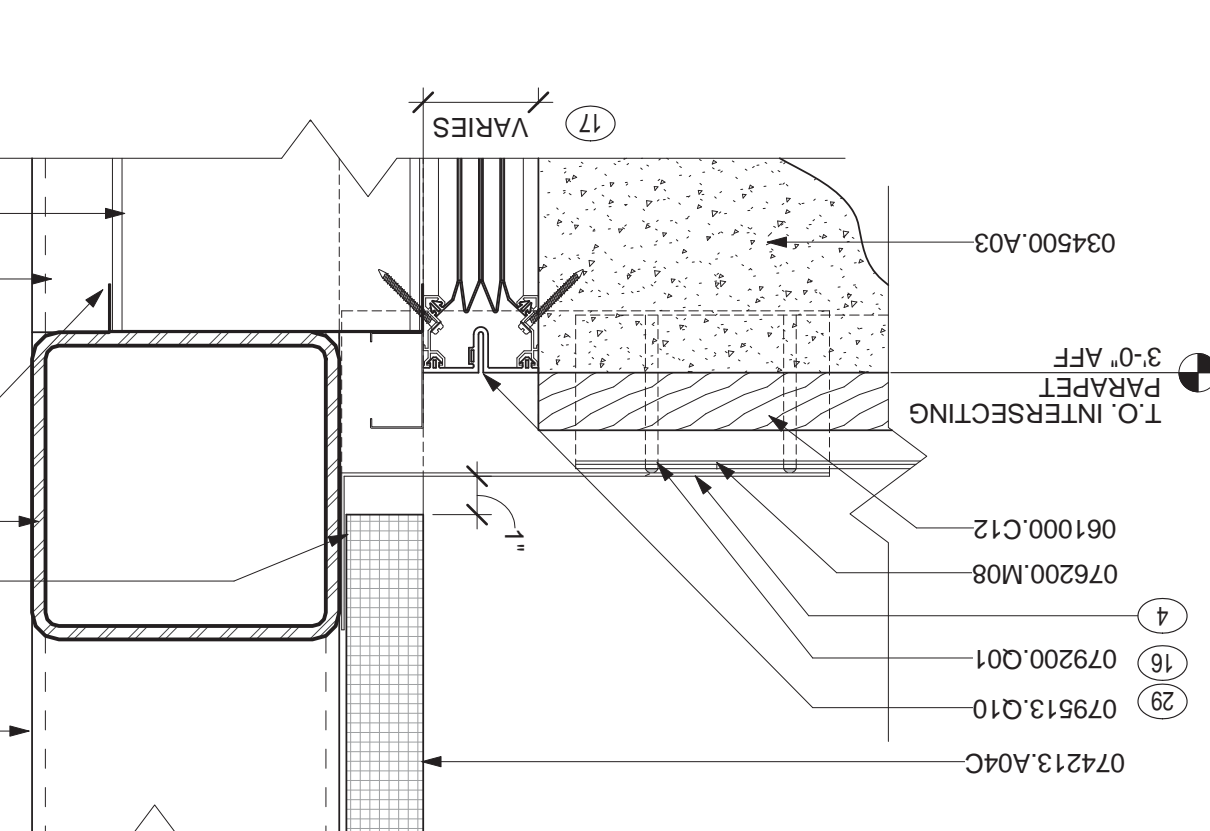
6 PRECAST PARAPET @ PRECAST INTERSECTION
& E.J.



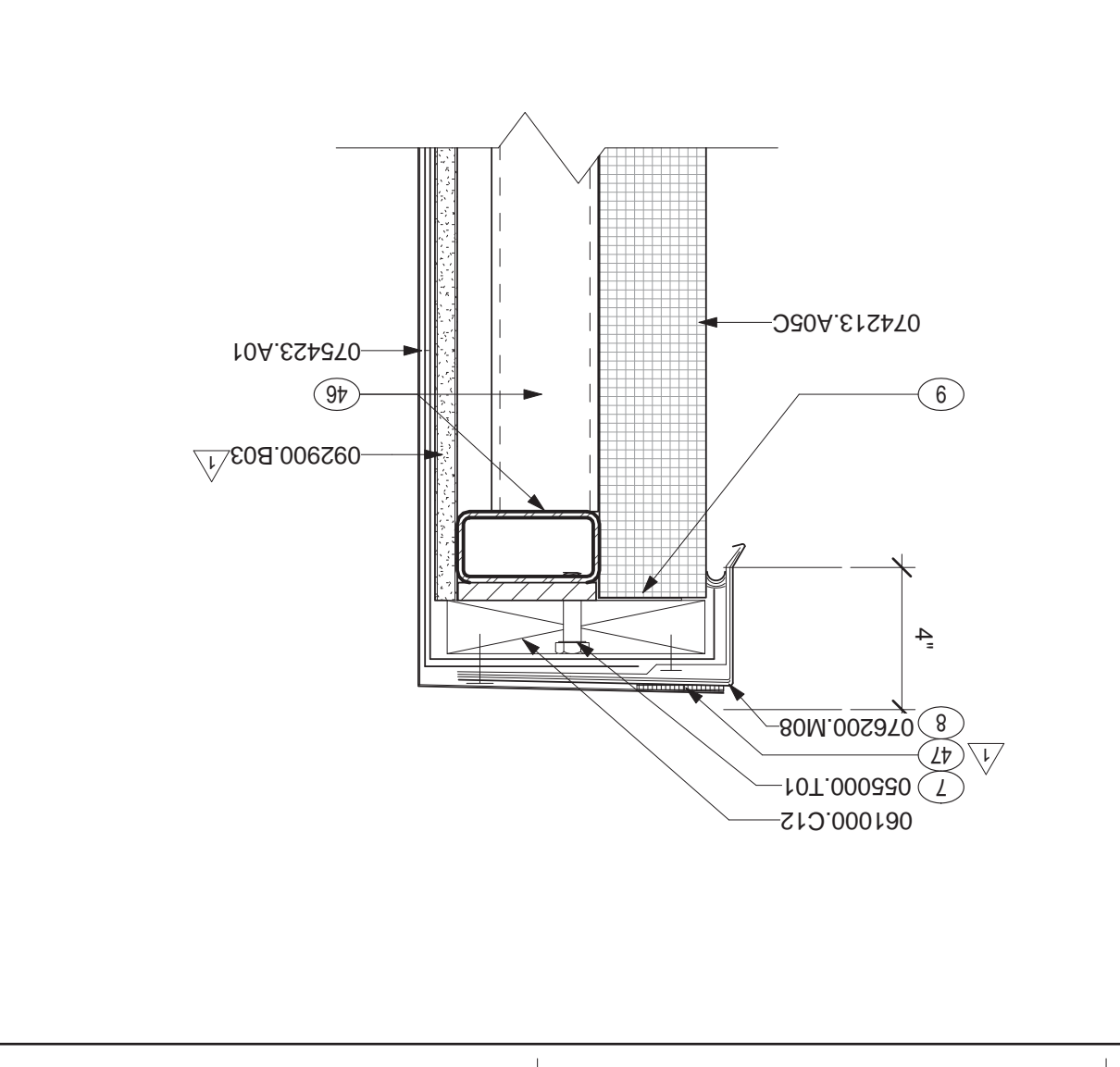
3 METAL COPING @ CURTAINWALL PARAPETS



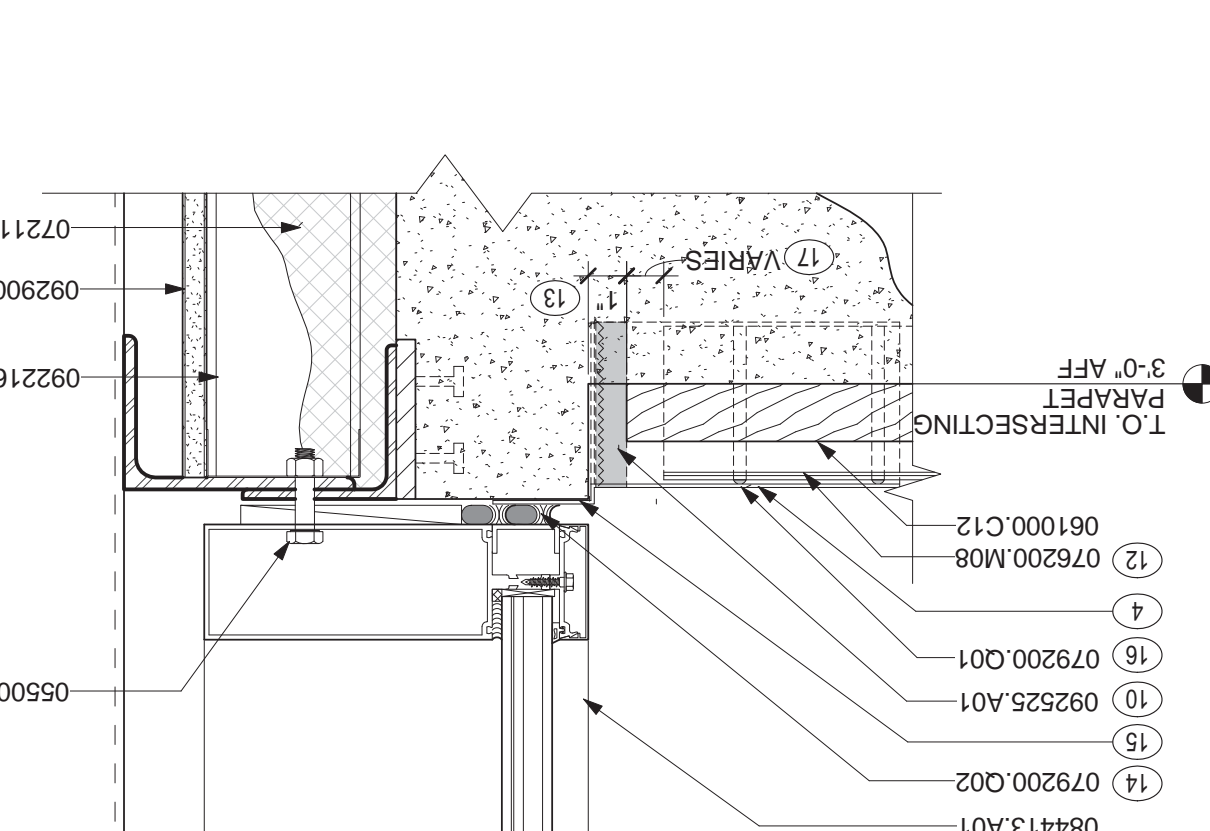
5 PRECAST PARAPET @ METAL PANEL INTERSECTION & E.J.



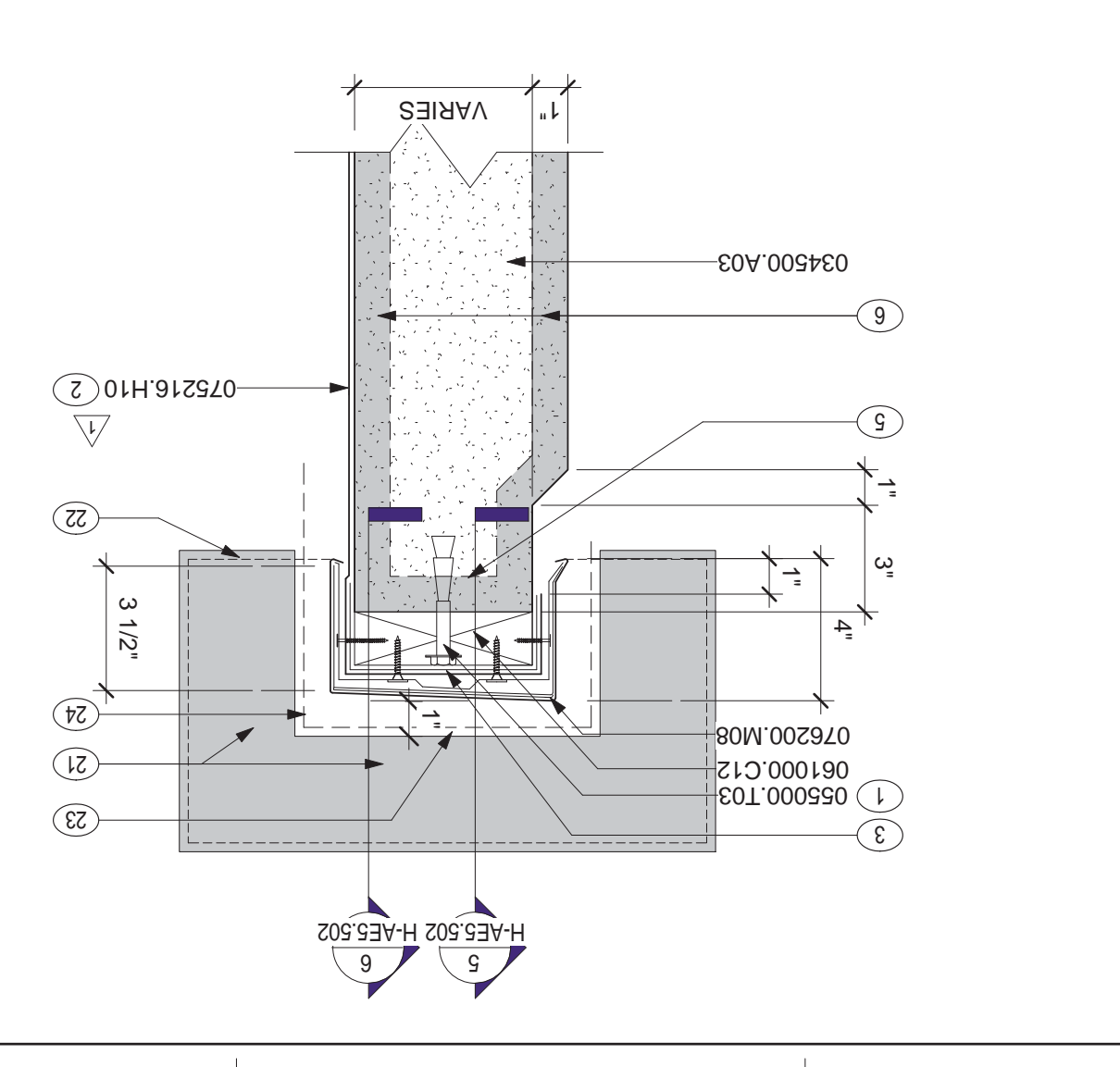
2 METAL COPING @ MTL. PANEL PARAPETS



4 COPENING TO CURTAIN WALL SILL LEVEL 5 @ COLUMN LINE DB



1 METAL COPING @ PRECAST PARAPET



one eighth inch = one foot
one quarter inch = one foot
three eighths inch = one foot
one half inch = one foot
three quarters inch = one foot
one inch = one foot
one and one half inches = one foot
three inches = one foot

No.	1
Description	CPR 206
Date	01/24/2012

1
2

3
4

5
6

7
8

9
10

11
12

13
14

15
16

17
18

19
20

21
22

23
24

25
26

27
28

29
30

31
32

33
34

35
36

37
38

39
40

41
42

43
44

45
46

47
48

49
50

51
52

53
54

55
56

57
58

59
60

61
62

63
64

65
66

67
68

69
70

71
72

73
74

75
76

77
78

79
80

81
82

83
84

85
86

87
88

89
90

91
92

93
94

95
96

97
98

99
100

101
102

103
104

105
106

107
108

109
110

111
112

113
114

115
116

117
118

119
120

121
122

123
124

125
126

127
128

129
130

131
132

133
134

135
136

137
138

139
140

141
142

143
144

145
146

147
148

149
150

151
152

153
154

155
156

157
158

159
160

161
162

163
164

165
166

167
168

169
170

171
172

173
174

175
176

177
178

179
180

181
182

183
184

185
186

187
188

189
190

191
192

193
194

195
196

197
198

199
200

201
202

203
204

205
206

207
208

209
210

211
212

213
214

215
216

217
218

219
220

221
222

223
224

225
226

227
228

229
230

231
232

233
234

235
236

237
238

239
240

241
242

243
244

245
246

247
248

249
250

251
252

253
254

255
256

257
258

259
260

261
262

263
264

265
266

267
268

269
270

271
272

273
274

275
276

277
278

279
280

281
282

283
284

285
286

287
288

289
290

291
292

293
294

295
296

297
298

299
300

301
302

303
304

305
306

307
308

309
310

311
312

313
314

315
316

317
318

319
320

321
322

323
324

325
326

327
328

329
330

331
332

333
334

335
336

337
338

339
340

341
342

343
344

345
346

347
348

349
350

351
352

353
354

355
356

357
358

359
360

361
362

363
364

365
366

367
368

369
370

371
372

373
374

375
376

377
378

379
380

381
382

383
384

385
386

387
388

389
390

391
392

393
394

395
396

397
398

399
400

401
402

403
404

405
406

407
408

409
410

411
412

413
414

415
416

417
418

419
420

421
422

423
424

425
426

427
428

429
430

431
432

433
434

435
436

437
438

439
440

441
442

443
444

445
446

447
448

449
450

451
452

453
454

455
456

457
458

459
460

461
462

463
464

465
466

467
468

469
470

471
472

473
474

475
476

477
478

479
480

481
482

483
484

485
486

487
488

489
490

491
492

493
494

495
496

497
498

499
500

501
502

503
504

505
506

507
508

509
510

511
512

513
514

515
516

517
518

519
520

521
522

523
524

525
526

527
528

529
530

531
532

533
534

535
536

537
538

539
540

541
542

543
544

545
546

547
548

549
550

551
552

553
554

555
556

557
558

559
560

561
562

563
564

565
566

567
568

569
570

571
572

573
574

No.	Description	Date
1	CPR 186	11/10/2011
2	CPR 206	01/24/2012

VA FORM 08-6231, OCT 1978

No.	Description	Date
1	CPR 186	11/10/2011
2	CPR 206	01/24/2012

CONSULTANTS:

Professional Seals:



ARCHITECT/ENGINEERS:



Drawing Title

HOSPITAL / CLINIC

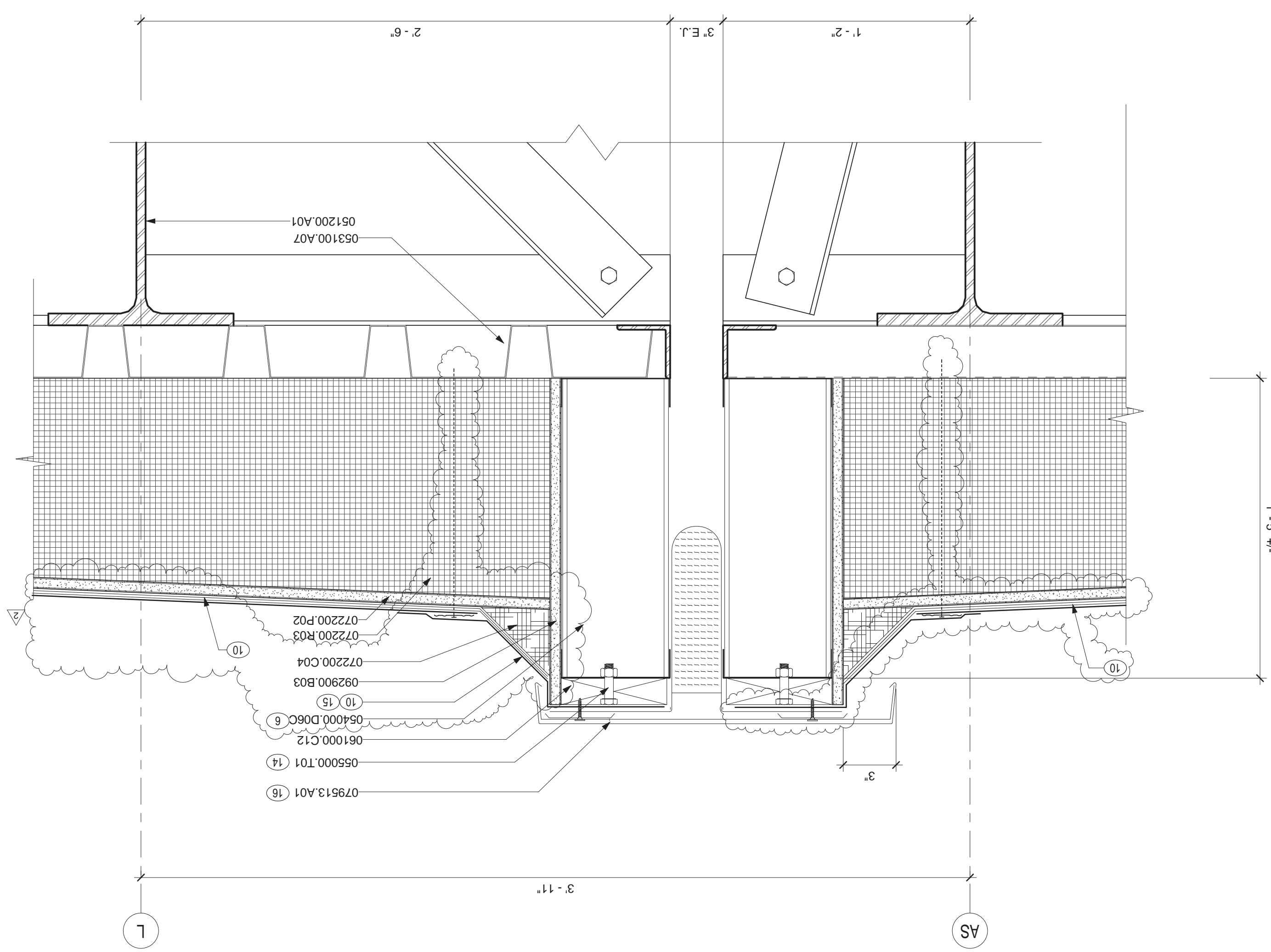
SUPER ROOF DETAILS

Approved Project Director
Date 04 JUNE, 2010
Location Orlando, Florida
Project Title A NEW HOSPITAL FOR VAMC ORLANDO, FLORIDA

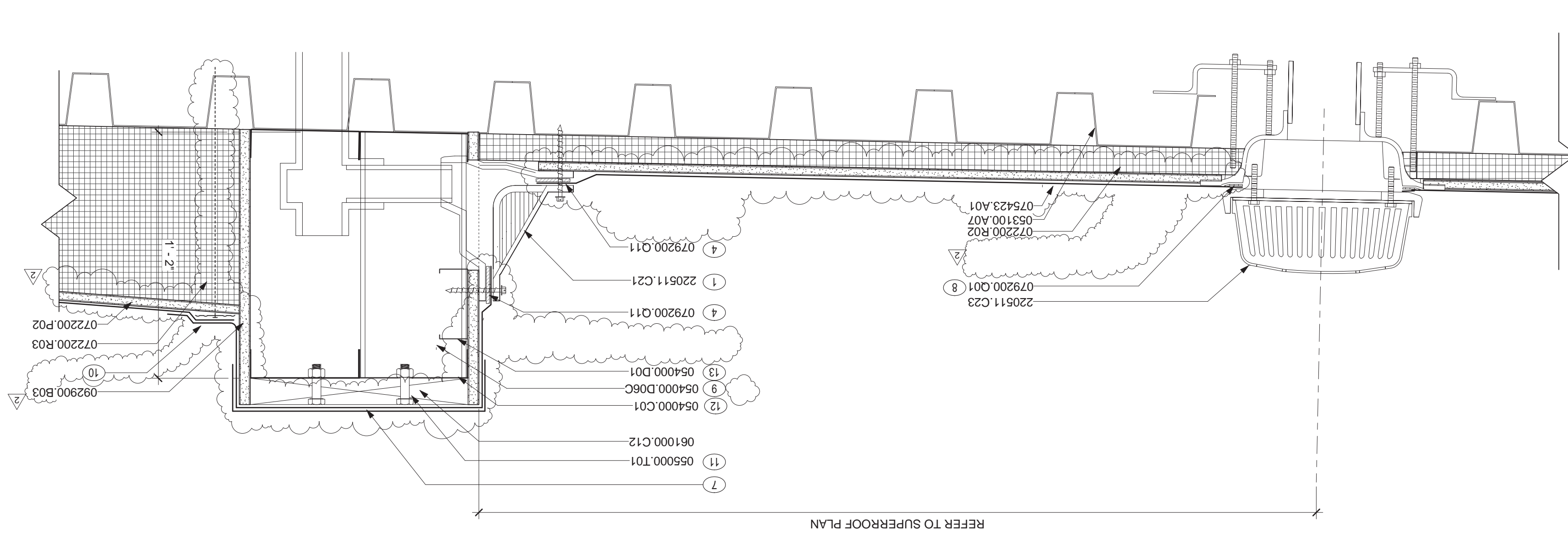
Project Number 673-950
Building Number 01 AND 02
Drawing Number H-AES.504
Dwg. 1077 of 4322

Department of Veterans Affairs
OFFICE OF FACILITIES MANAGEMENT

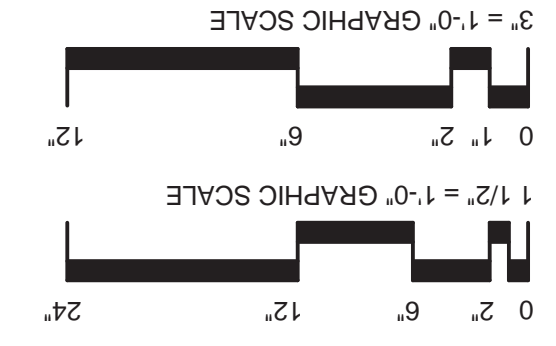
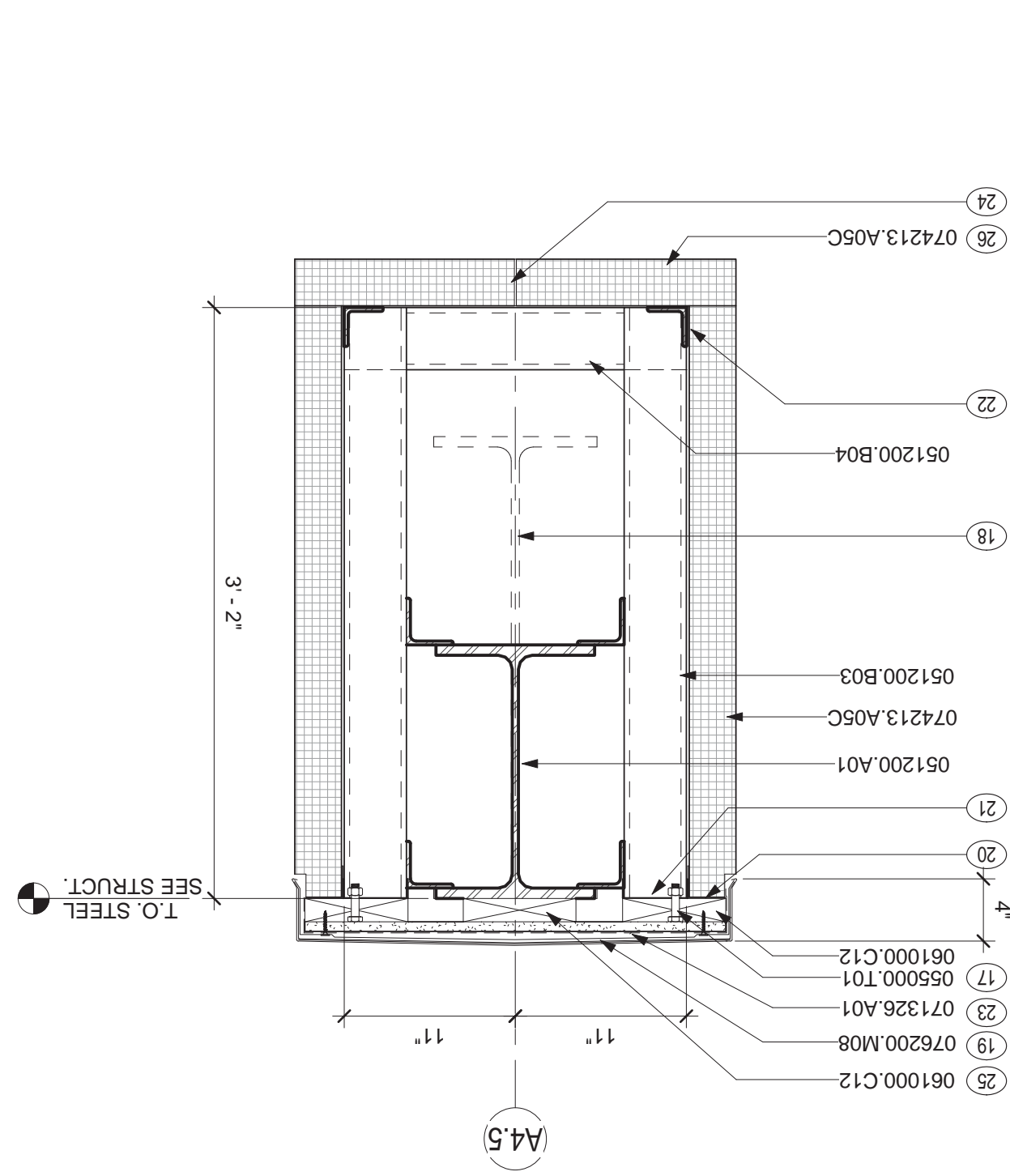
2 SUPER ROOF @ 3" E.J. COLUMN LINE AS & L



1 SUPER ROOF SCUPPER & SECONDARY DRAIN @ CURB



3 SECTION AT FLYING BEAM



- MATERIAL NOTES
- 051200.A01 STEEL BEAM
 - 051200.B03 STEEL TUBE COLUMN
 - 051200.B04 STEEL PIPE COLUMN
 - 053100.A07 STEEL ROOF DECK
 - 054000.C01 STEEL STUD RUNNER TRACK
 - 054000.D01 STEEL STUD
 - 054000.D06C STEEL STUD 6"
 - 055000.T01 BOLT
 - 061000.C12 CONTINUOUS PRESSURE TREATED WOOD BLOCKING
 - 061000.C12 COMPOSITE SELF ADHERING SHEET MEMBRANE WATERPROOFING
 - 072200.C04 PREFORMED CANT
 - 072200.F02 GLASS MAT GYPSUM PROTECTION BOARD
 - 072200.R02 ROOF INSULATION BOARD
 - 072200.R03 TAPERED ROOF INSULATION
 - 074213.A05C FACTORY INSULATED WALL PANEL 3" THICK
 - 074213.A01 SINGLE PLY THERMOPLASTIC ROOFING SYSTEM
 - 076200.M08 PARAPET COPING SYSTEM
 - 079200.C01 JOINT SEALANT
 - 079200.Q11 SEALANT BED
 - 079513.A01 EXPANSION JOINT, EXTERIOR METAL FRAME AND COVER
 - 092900.B03 GLASS MAT COVERED OR REINFORCED GYPSUM COVER
 - 220511.C21 PRIMARY ROOF DRAIN
 - 220511.C23 OVERFLOW ROOF DRAIN

- NOTES:
- SHEET NOTES:
- A. REFER TO SHEET 0-011 FOR STANDARD SYMBOLS AND ABBREVIATIONS.
 - B. SEE SHEET H-AES.175 FOR TYPICAL METAL PANEL DETAILS.
 - C. REFER TO SHEET H-AES.133 FOR TYPICAL PRECAST PANEL JOINTS & REVEALS.
 - D. SEE SHEET H-AES.001 FOR FIREPROOFING, INSULATION R-VALUES, AND GENERAL DETAILING INFORMATION.
- KEYNOTES (00)
- 1 SCUPPER DRAIN
 - 2 SET FLASHING PLATE IN FULL BED AFTER ROOFING BASE SHEET IS INSTALLED
 - 3 'L' SHAPED EXTEND MIN 2" BEYOND SIDES OF DRAIN BODY
 - 4 LAP MEMBRANE OVER SEALANT & INSTALL CLAMPING PLATE OVER MEMBRANE
 - 5 FRAME VERTICAL STUD EACH SIDE OF DRAIN BODY FOR SELF TAPPING SCREW ATTACHMENT
 - 6 CURB FRAMING WELDED TO METAL DECK @ 2'-0" O.C.
 - 7 FULLY ADHERED THERMOPLASTIC CAP
 - 8 INSTALL COMPATIBLE SEALANT BETWEEN DRAIN BODY FLANGE AND ROOF MEMBRANE
 - 9 DOUBLE CURB FRAMING WELDED TO METAL DECK @ 2'-0" O.C. TYPE 'B' ROOF SYSTEM. SEE ROOF PLAN.
 - 11 @ 32" O.C. STAGGERED
 - 12 6"
 - 13 DRAIN ATTACHMENT BACKER
 - 14 @ 32" O.C.
 - 15 EXTEND MEMBRANE UP FACE OF CURB & OVER BLOCKING & LAP UNDER E.J. COVER RAIL.
 - 16 MATCH TOP OF E.J. COVER TO L.P. OF METAL COPING TOP BEYOND (TYP)
 - 17 @ 32" O.C.
 - 18 INDICATES W/30X99 STEEL BEAMS PERPENDICULAR TO COL. LINE A45 @ COL. LINES AC, AH, & AJ.
 - 19 PEAKED w/ OUTSIDE FACE FLUSH w/ PANEL
 - 20 16 GA. MIN. METAL PANEL SUPPORT ANGLE
 - 21 12 GA. STEEL TUBE CHANNEL CAP
 - 22 SELF ADHERING NEOPRENE STRIPS AS ISOLATOR BETWEEN STEEL SUPPORTS & ALUMINUM PANELS
 - 23 OVER SHEATHING & LAP DOWN OVER BLOCKING & METAL PANEL EDGE
 - 24 HORIZ. PANEL JOINT CENTER OF SOFFIT PANEL
 - 25 BRACE
 - 26 SOFFIT PANEL

[illegible]

CONSTANTS:

Professional Seals:

ARCHITECT/ENGINEERS:



ELLERBE BECKET

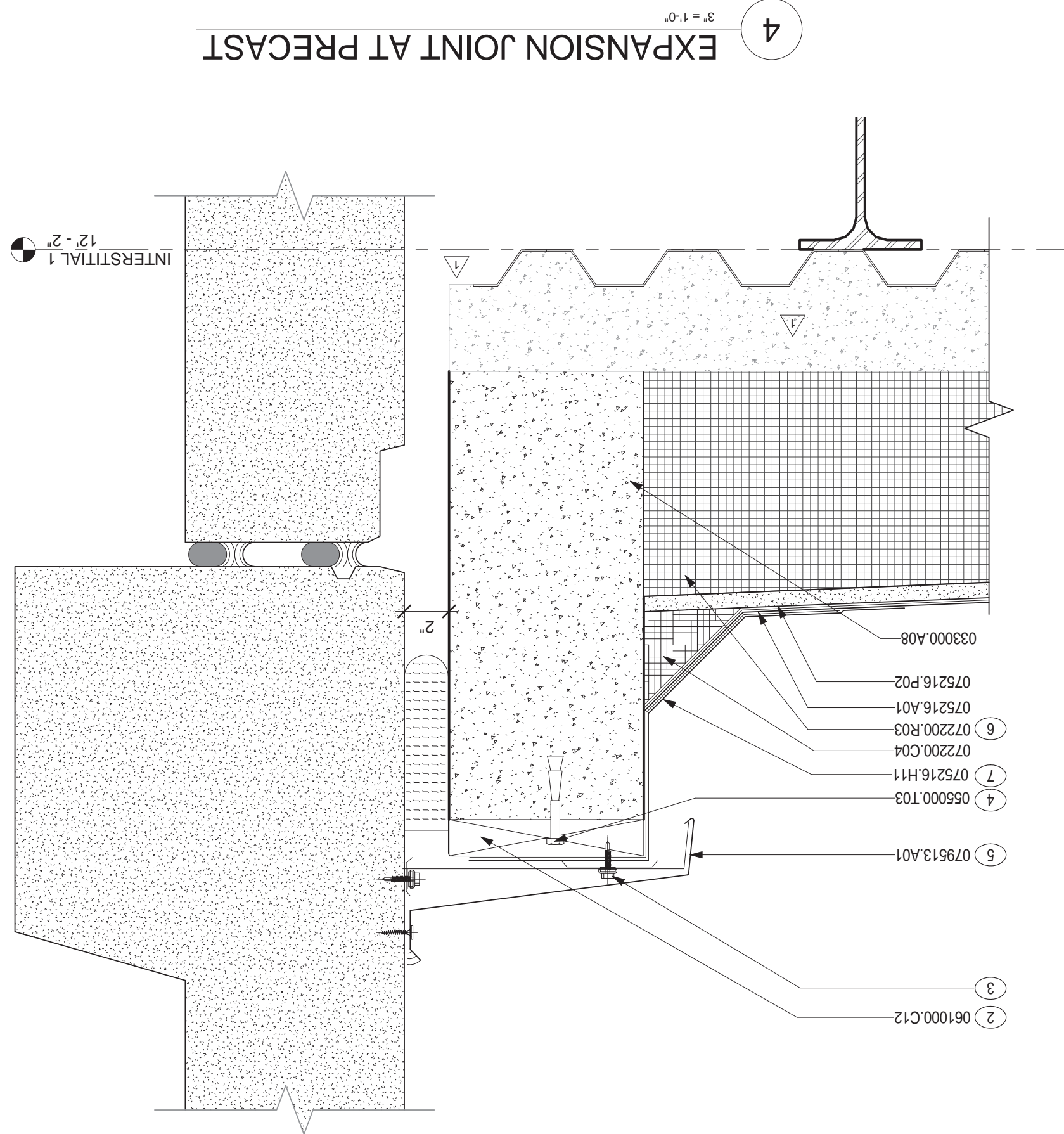
Drawing Title
HOSPITAL / CLINIC
ROOF DETAILS

Project Title
A NEW HOSPITAL FOR
VAMC ORLANDO, FLORIDA

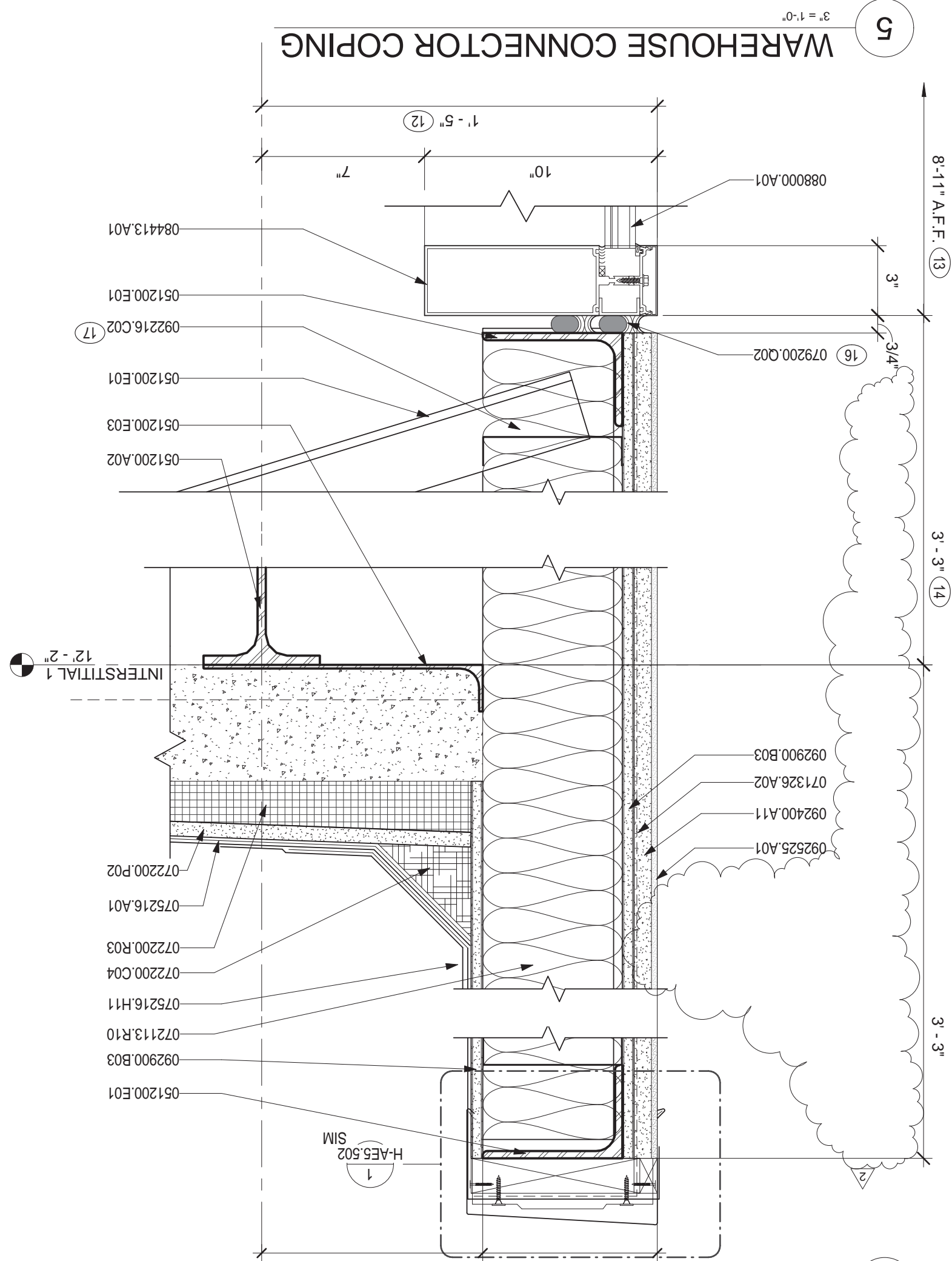
AE5.506

OFFICE OF
FACILITIES
MANAGEMENT

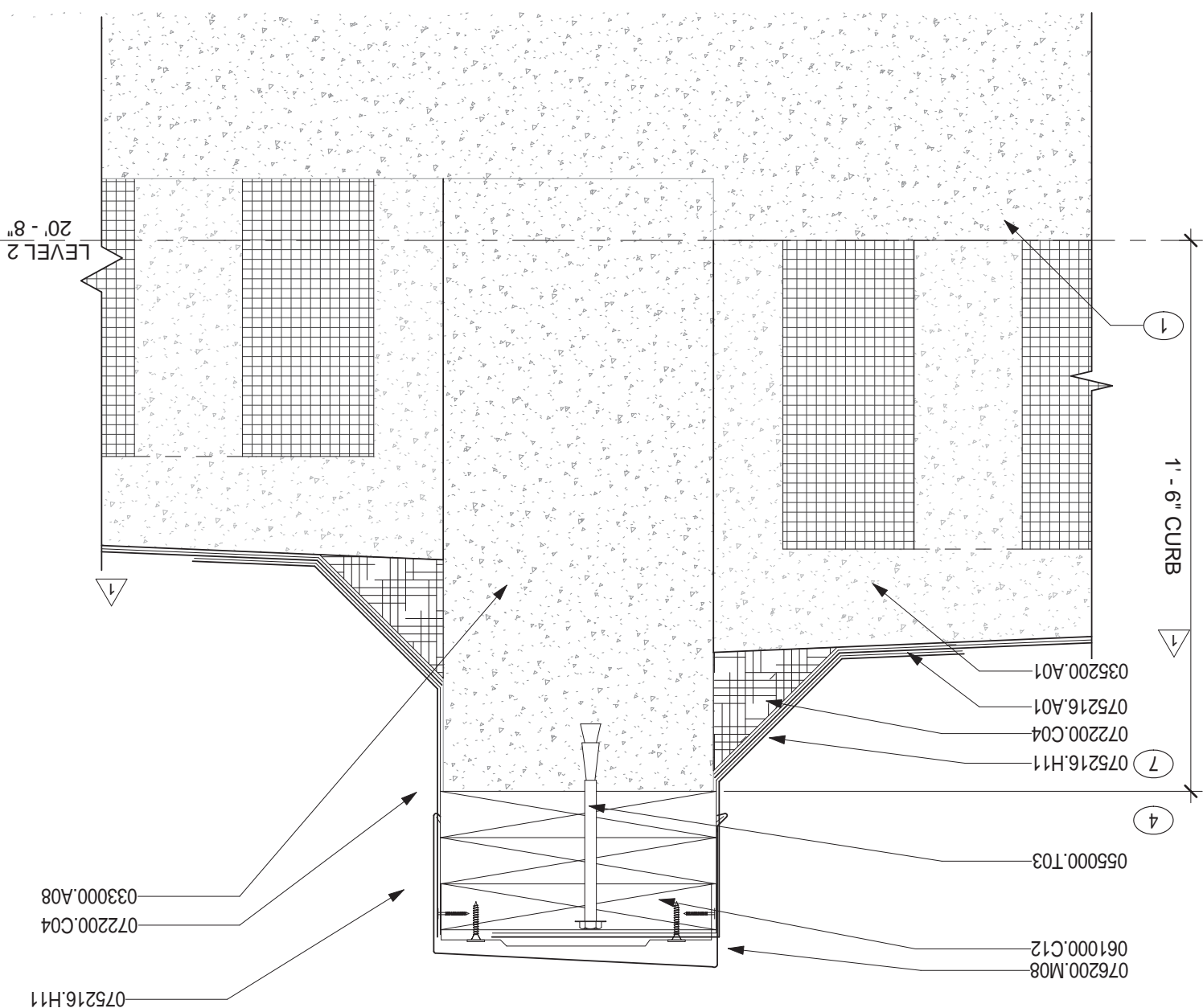
BUILDING IS FULLY SPRINKLERED



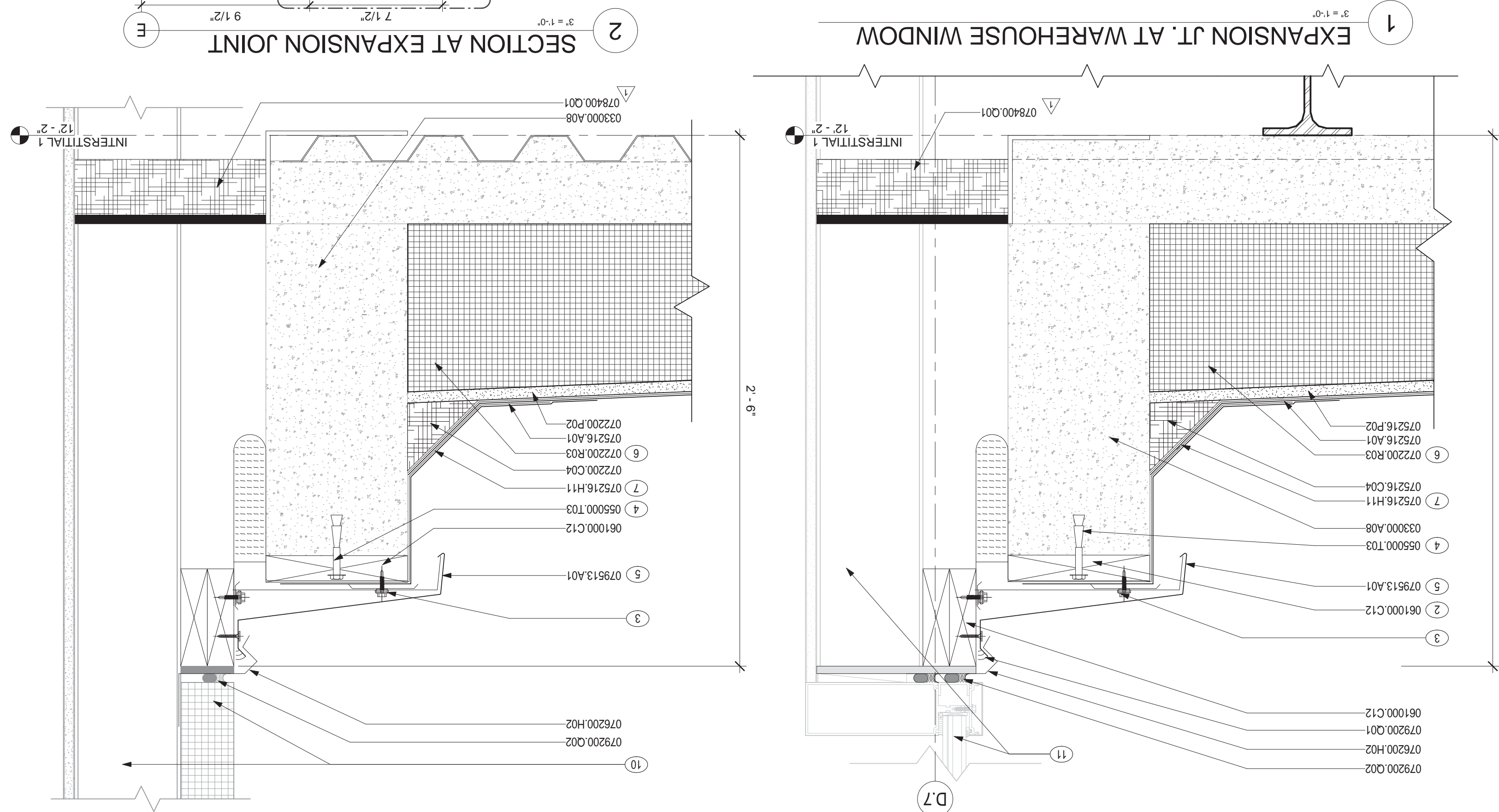
EXPANSION JOINT AT PRECAST



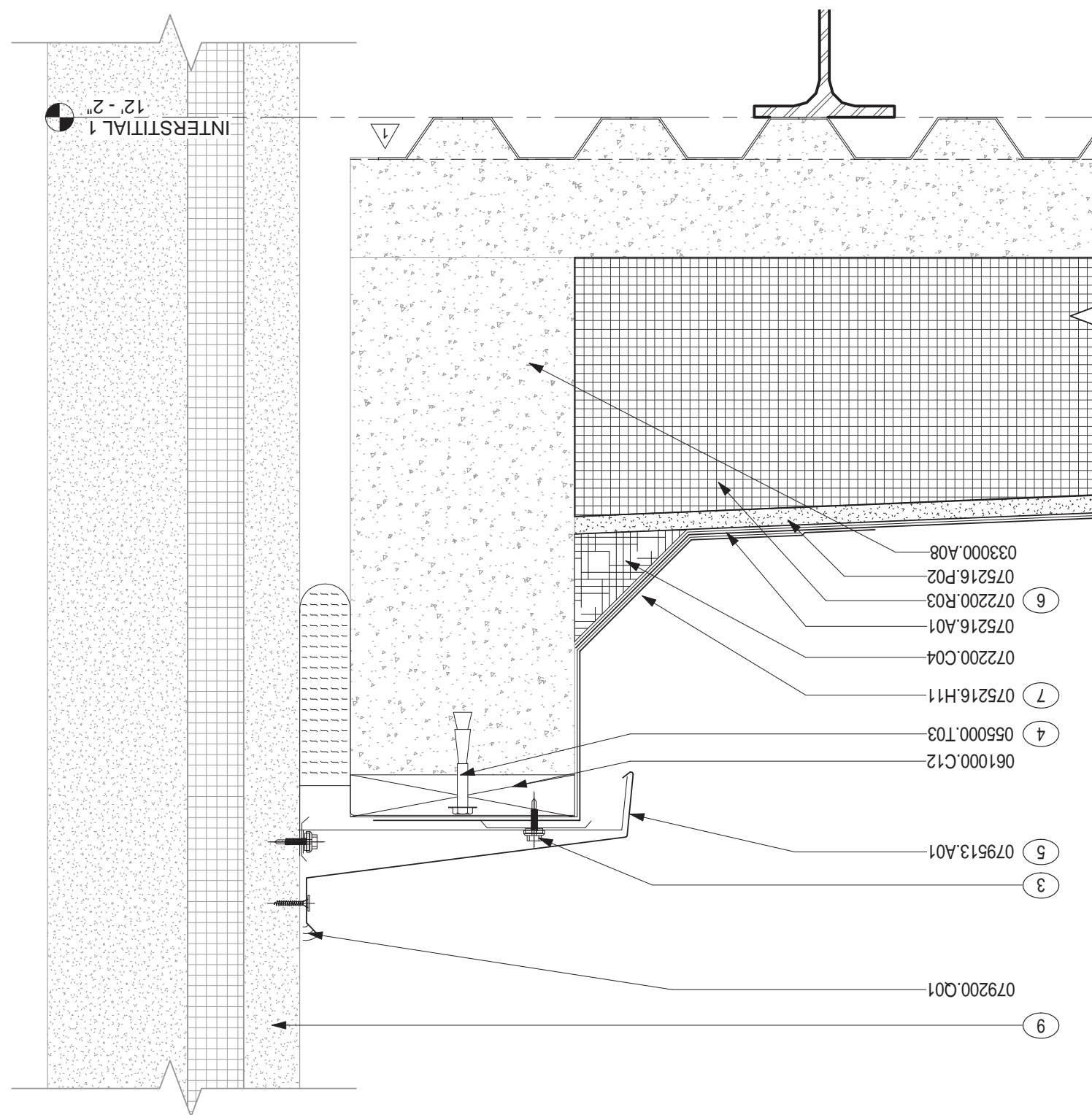
WAREHOUSE CONNECTOR COPING



SECTION AT AREA DIVIDER



EXPANSION JT. AT WAREHOUSE WINDOW



EXPANSION JT. AT WAREHOUSE WALL

NOTES:

100) EXISTING CONCRETE STRUCTURE
 2 X 8 MIN. P.1 WOOD CURB PER E.I. COVER
 MANUFACTURER
 CORROSION RESISTANT STEEL SCREWS W/ NEOPRENE
 WASHERS (2" P.)
 @ .48" O.C. (MAX.)
 W/ INTEGRAL INSULATION GARFLE (SET WALL ATTACHMENT)
 LEG IN FULL BED OF SEALANT)
 12-12" MAXIMUM DEPTH
 EXTEND UP PLYWOOD FACE & TURN UNDER E.I. RAIL
 WAREHOUSE CONCRETE TILT-UP WALL PANEL N.O.C. SEE
 OTHER BID PACKAGE
 WAREHOUSE METAL WALL PANEL AND STRUCTURAL STUD
 FRAMING N.I.C. SEE OTHER BID PACKAGE
 WAREHOUSE WINDOW SYSTEM AND STRUCTURAL STUD
 FRAMING N.I.C. SEE OTHER BID PACKAGE
 2'-0" ABOVE TUNNEL
 10'-10" AT COLUMN LINE E. ONLY
 1'-4" AT COLUMN LINE E. ONLY
 DOORULE
 6" NON-STRUCTURAL METAL STUD FRAMING IN FILL
 BETWEEN STRUCTURAL FRAMING

MATERIAL NOTES	
CONCRETE CURB	030000.008
LIGHTWEIGHT INSULATING CONCRETE SYSTEM	030200.001
STEEL WIDE FLANGE BEAM	051200.002
STEEL PLATE	051200.003
STEEL ANGLE	051200.007
STEEL FLAT, BENT	051200.008
EXPANSION BOLT	061000.012
CONTINUOUS PRESSURE TREATED WOOD	071200.003
BLOCKING	071200.004
SELF-ADHERING, VAPOR RETARDING, MODIFIED BITUMENOUS SHEET AIR BARRIER	071213.010
TRIMMED INSULATION, UNFACED	072200.004
PREFORMED CANT	072200.002
GLASS MAT GYPSUM PROTECTION BOARD	072200.003
MODIFIED ROOF INSULATION	072216.001
APPROVED ROOFING SYSTEM	072216.004
PERFORMED CANT	072216.011
MODIFIED BITUMEN BASE FLASHING	072216.002
GLASS MAT GYPSUM PROTECTION BOARD	072216.003
COUNTERFLASHING	072200.008
PARAPET COPING SYSTEM	072200.007
FIRESTOPPING FLASHING	072200.001
JOINT SEALANT	072200.002
BACKSTOP AND SEALANT	072200.003
EXPOSITION JOINT, EXTERIOR METAL FRAME AND COVER	084413.001
GLAZED ALUMINUM CURTAIN WALL	084413.002
GLAZING	084413.003
STEEL STUD RUNNER TRACK	084413.004
SELF-FLUERING DIAMOND MESH LATH	084413.005
HYDRAULIC GUM PLASTING	084413.006
GLASS MAT COVERED OR REINFORCED GYPSUM SHEATHING	084413.007

E

D

C

B

6

8

2

9

5

4

3

2

4

VA FORM 08-6231, OCT 1978

one eighth inch = one foot
one quarter inch = one foot
three eighths inch = one foot
one half inch = one foot
one inch = one foot
one and one half inches = one foot
three inches = one foot

No.	Description	Date
1	CPR 213	01/11/2012
2	CPR 258	03/08/2012
3	CPR 263	03/15/2012
4	CPR 266	03/21/2012
5	CPR 296	08/06/2012

VA FORM 08-6231, OCT 1978

CONSULTANTS:

Professional Seals:



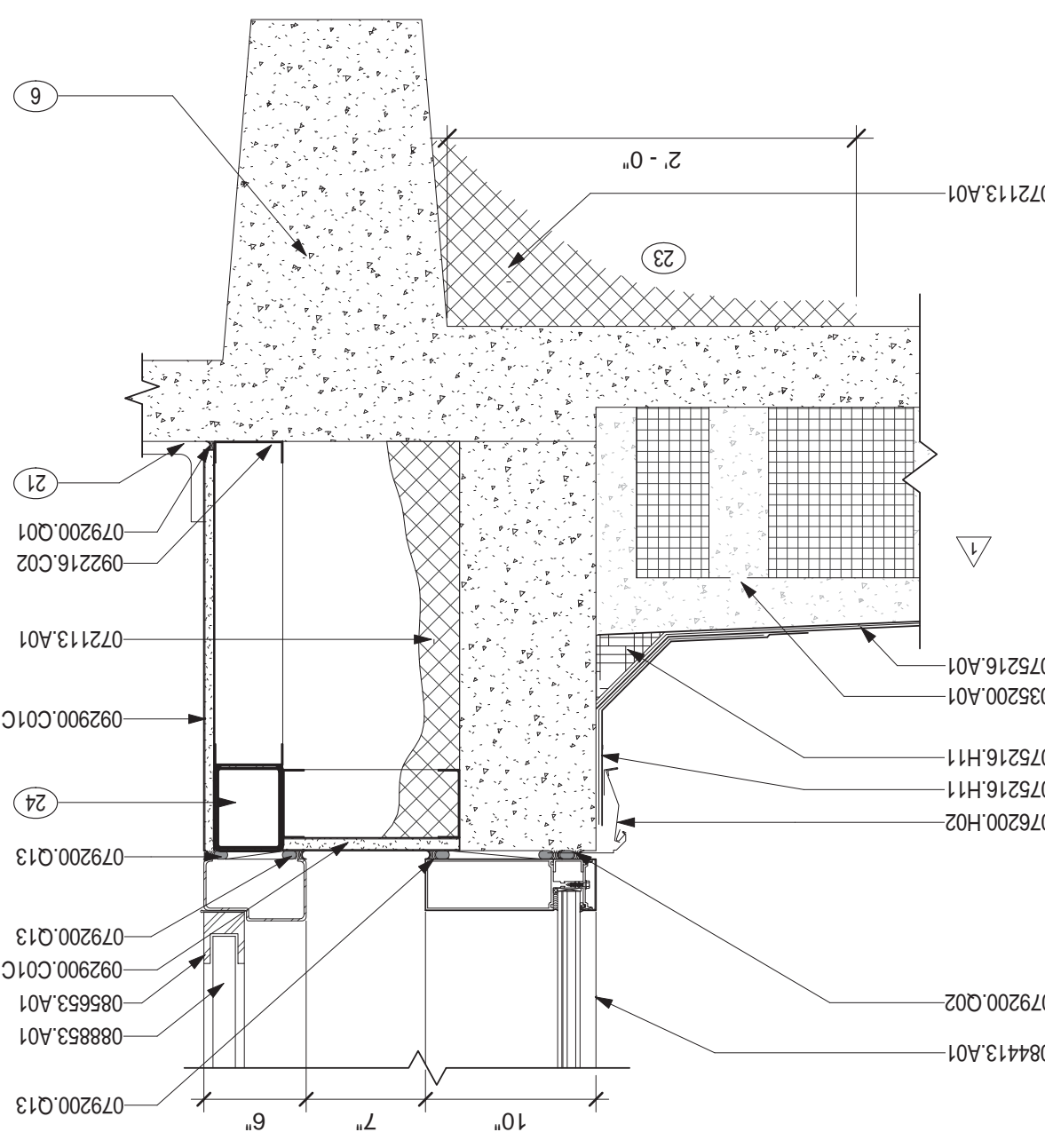
ARCHITECT/ENGINEERS:
RLF
ELLERBE BECKETT
145 Lincoln Avenue
White Oak, Florida 32789
407.647.1039
1001 G Street, NW, Suite 1000
Washington, D.C. 20001
202.654.9300

Drawing Title
**HOSPITAL / CLINIC
ROOF DETAILS**
Approved Project Director
Mark A. Beck
Date
04 JUNE, 2010
Location
Orlando, Florida
Checked
BKH
Drawn
EB / RLF

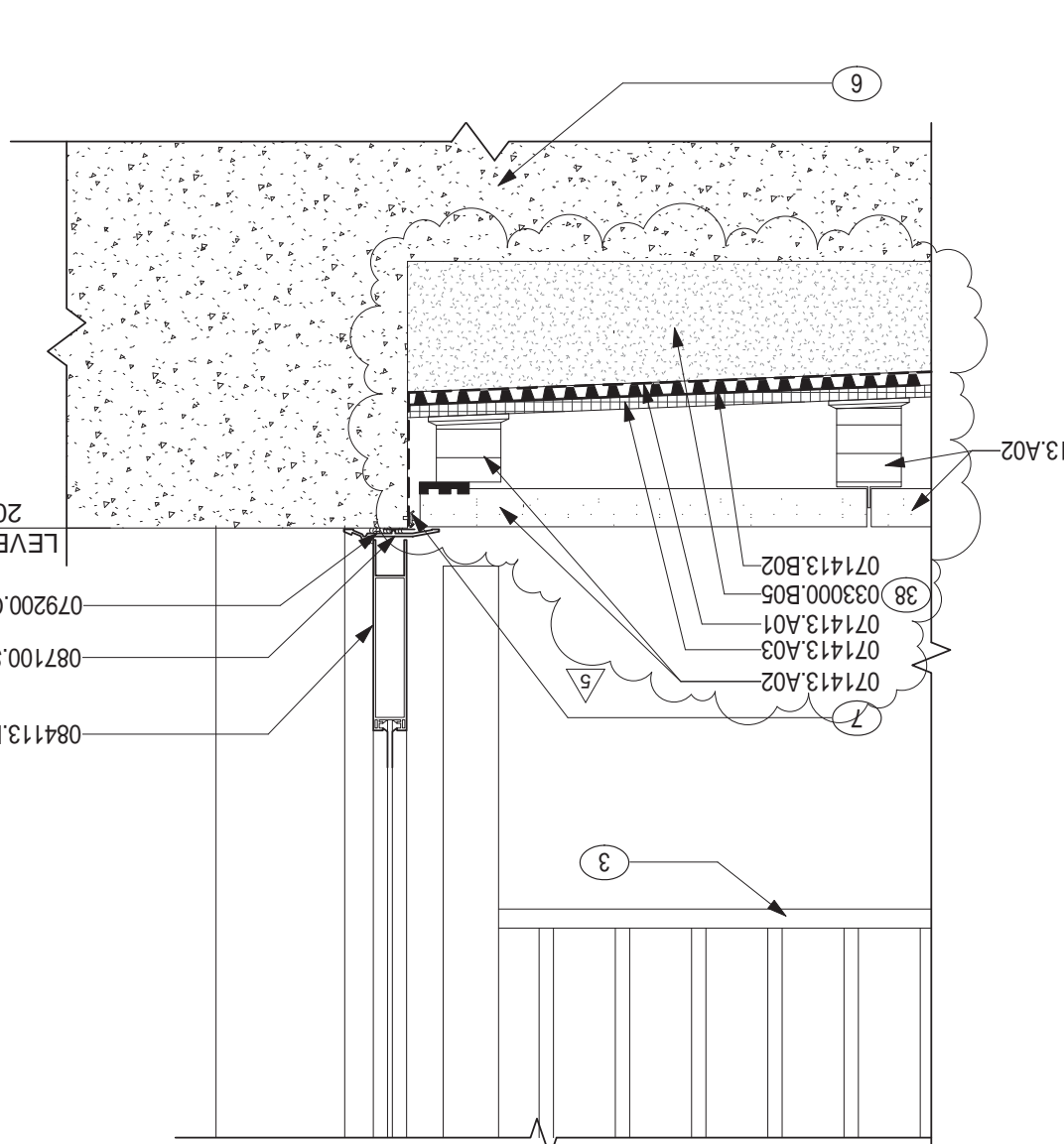
Project Number
673-950
Building Number
01 AND 02
Drawing Number
H-AES.510
Dwg. 1083 of 4322

Department of
Veterans Affairs
OFFICE OF
FACILITIES
MANAGEMENT

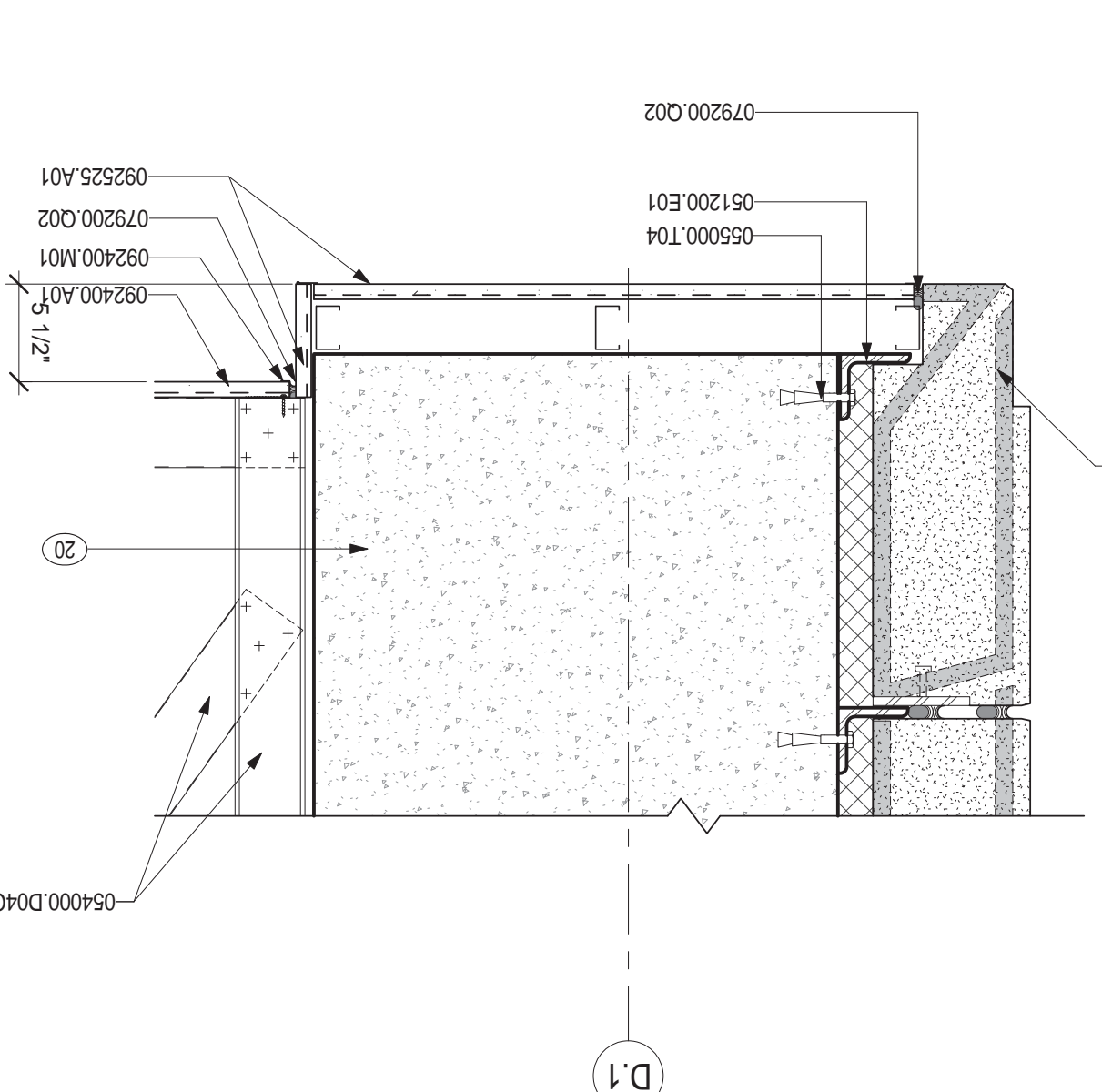
4 ROOF AT CURTAINWALL



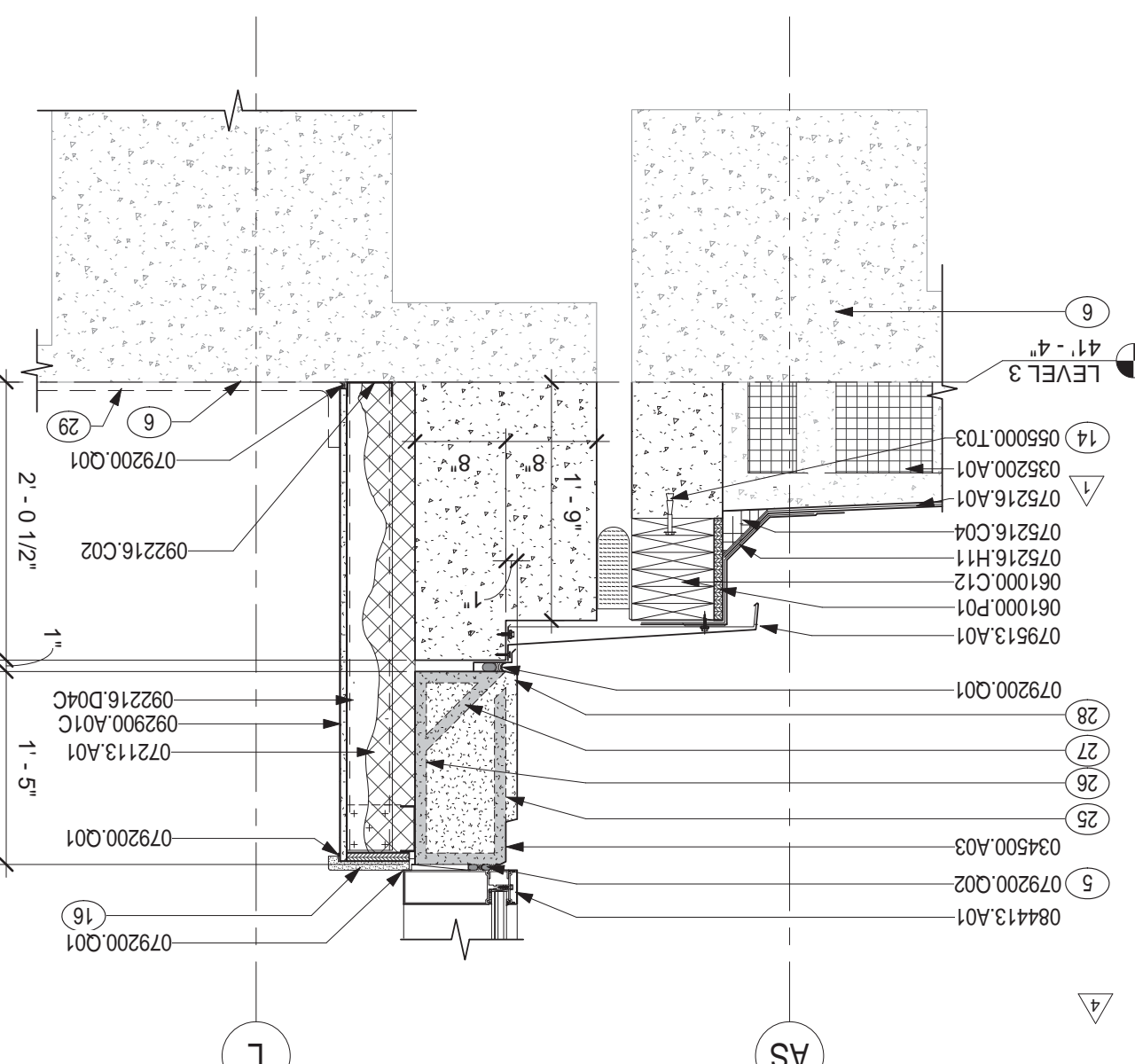
5 ROOF PEDESTAL PAVER DETAIL @ CURTAINWALL DOOR



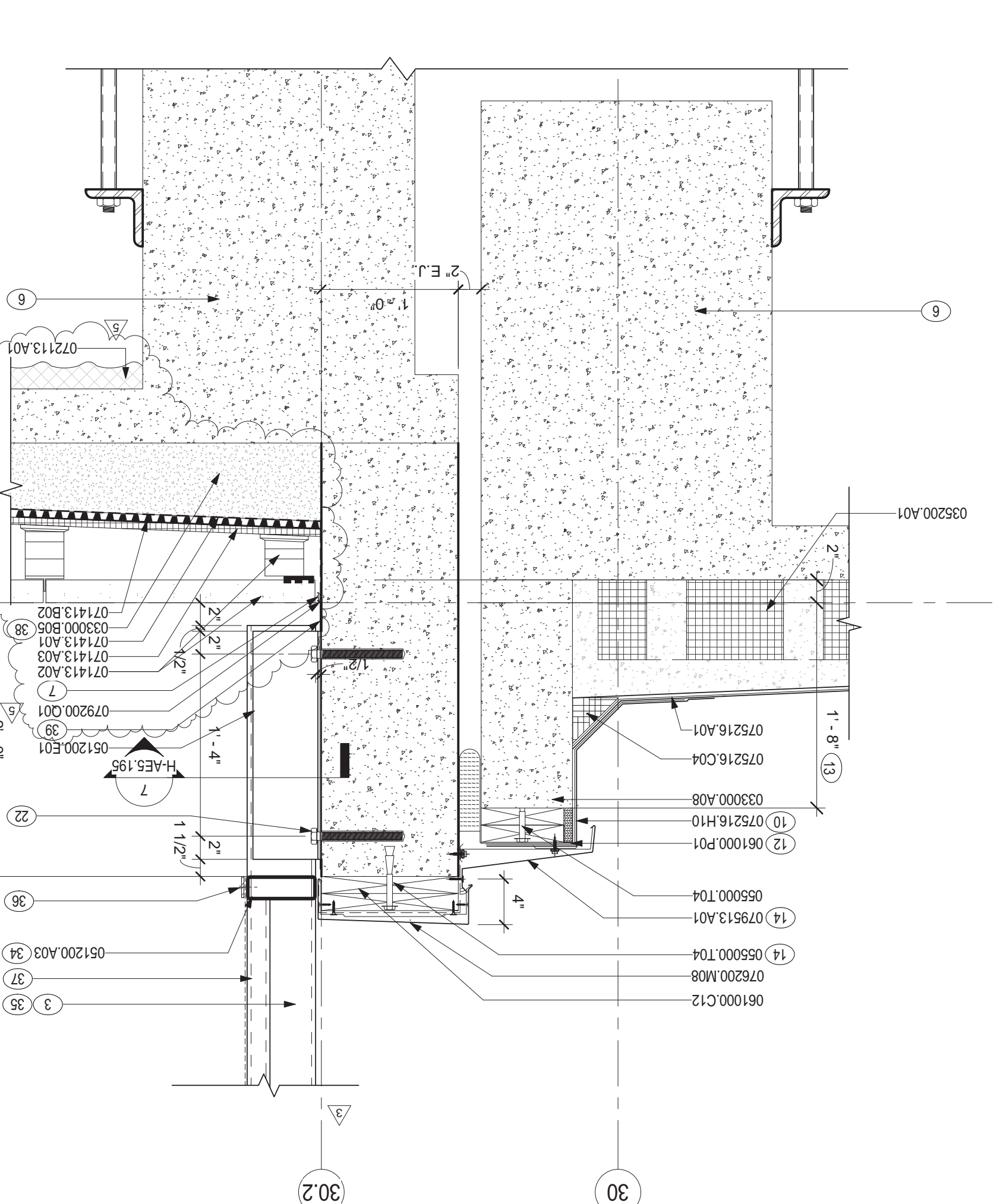
6 STUCCO SOFFIT AT PRECAST



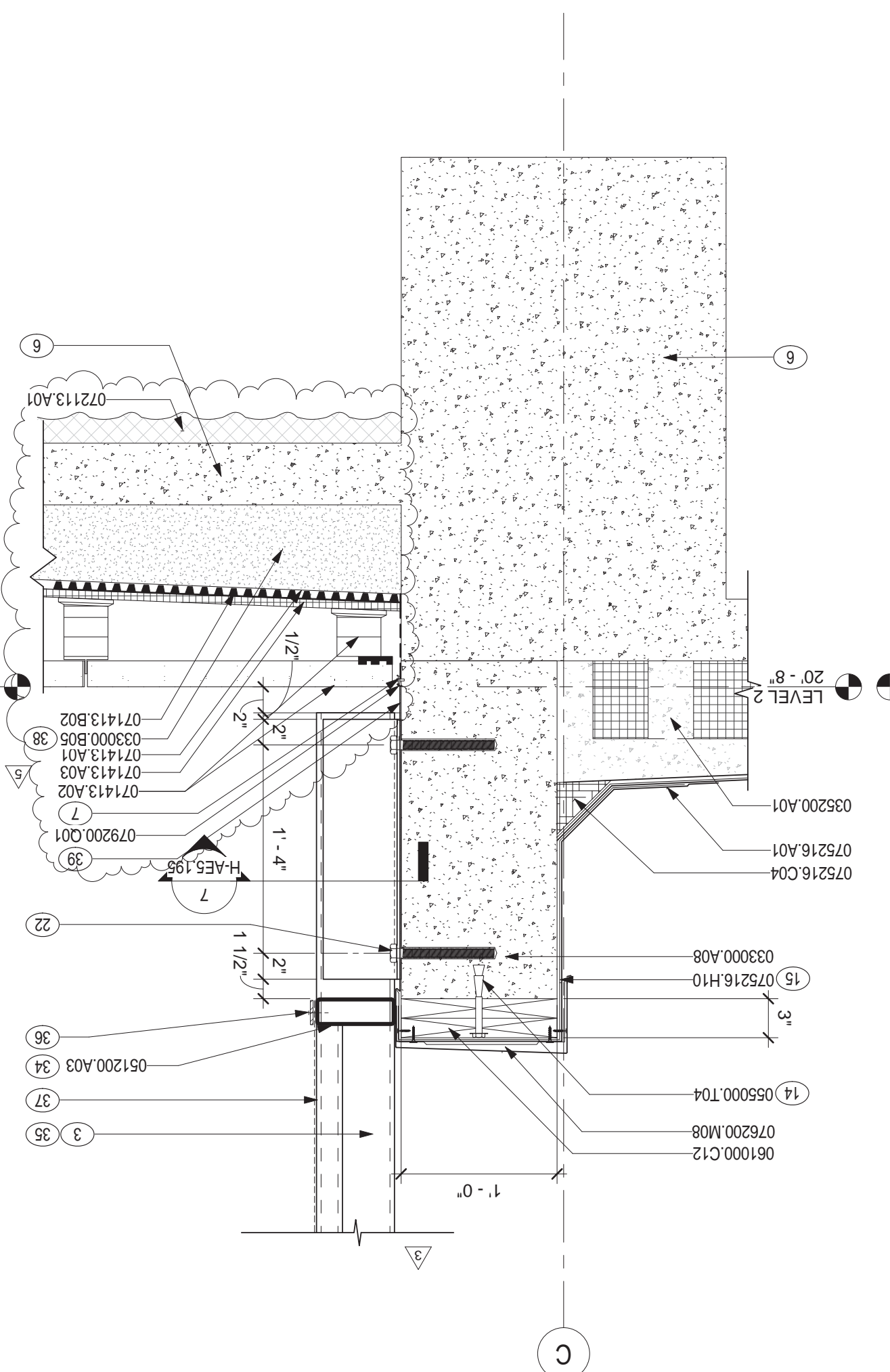
7 ROOFING AT WIDE CURB



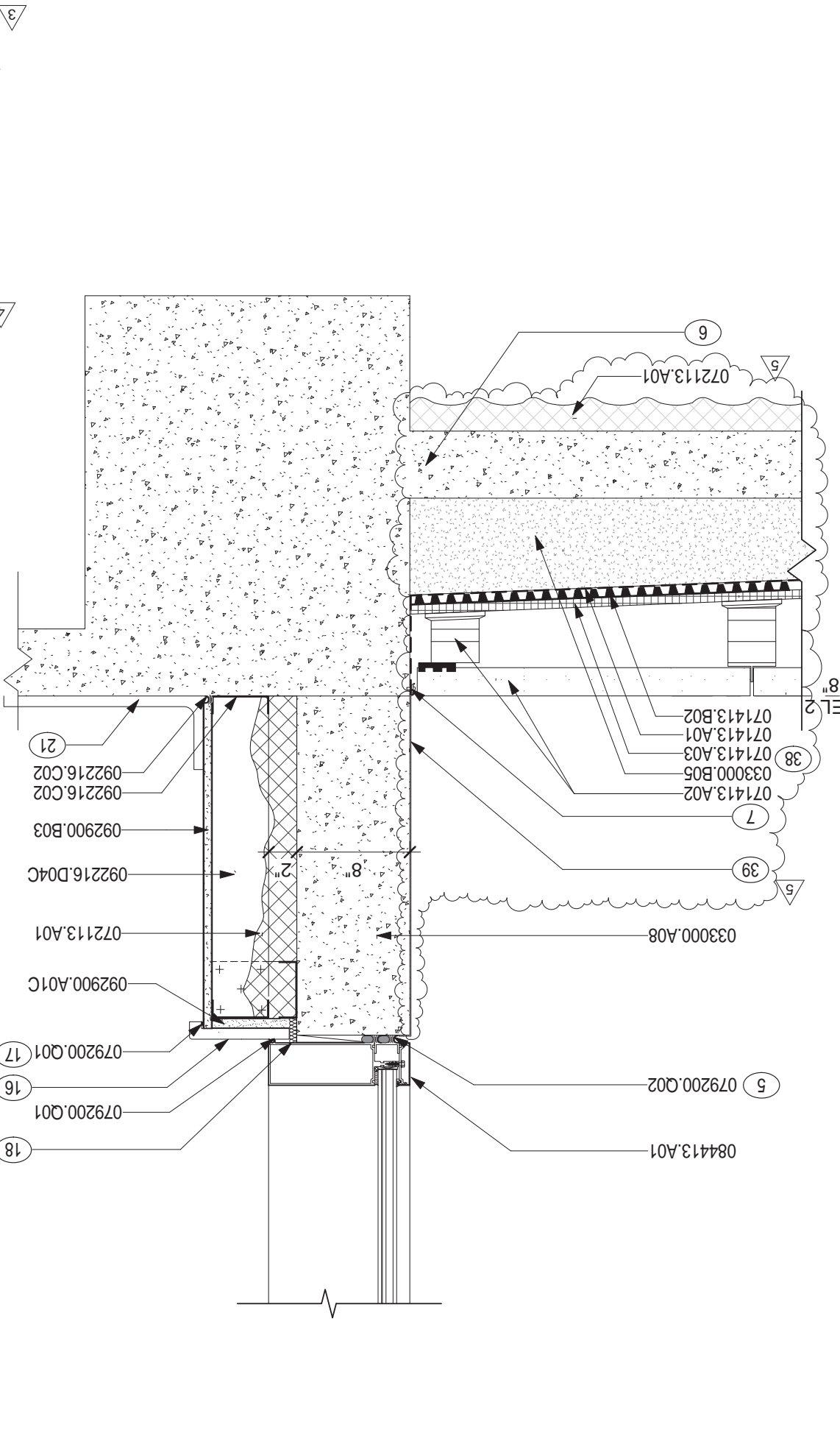
1 ROOF PEDESTAL PAVER DETAIL @ 2" E.J.



2 ROOF PEDESTAL PAVER DETAIL @ FENCE



3 ROOF PEDESTAL PAVER DETAIL @ CURTAINWALL CURB



NOTES:

- A. REFER TO SHEET G-011 FOR STANDARD SYMBOLS AND ABBREVIATIONS.
B. SEE SHEET H-AES.175 FOR TYPICAL METAL PANEL DETAILS.
C. REFER TO SHEET H-AES.133 FOR TYPICAL PRECAST PANEL JOINTS & REVEALS.
D. SEE SHEET H-AES.001 FOR FIREPROOFING, INSULATION R-VALUES, AND GENERAL DETAILING INFORMATION.
KEYNOTES:
3 SECURITY FENCING - 14 FOOT HIGH
4 IN FULL BED OF SEALANT
5 DOUBLE
6 EXISTING STRUCTURE
7 TERMINATION BAR
10 EXTEND UP CURB FACE & OVER BLOCKING UNDER E.J. RAIL
11 REMOVABLE SPRING LOADED W/ WIND CLIP
12 3/4"
13 REFER TO NOTE 2 SHEET H-AES.507
14 @ 32" O.C. (TYP.)
15 EXTEND WALL/BASE FLASHING FLIES UP CURB & OVER COPING BLOCKING & DOWN UNDER BACK COPING LCG
16 SOLID SURFACE STOOL ON GLASS MAT GYPSUM SUBSTRATE (TYP.)
17 1/4" MAX
18 HOLD BACK OF STOOL & PLYWOOD 1/2" FROM CURB & LOOSE PACK W/ INSULATION (TYP.)
19 TYP @ EXTERIOR DOORS
20 EXISTING STRUCTURE TO REMAIN
21 SCHEDULED FLOORING AND BASE
22 3/4" DIAMETER ADHESIVE ANCHOR WITH 7" EMBEDMENT (TYP.)
23 OVERLAY ROOF SLAB INSULATION AND SPRAY APPLIED INSULATION UNDER SLAB MINIMUM OF R-30 FOR 2'-0" MISCELLANEOUS SUPPORT FRAMING TO BE DESIGNED AND ENGINEERED BY METAL PANEL MANUFACTURER
24 LINE OF EXTERIOR BACKER ROD & SEALANT WEATHER SEAL @ VERTICAL PRECAST PANEL JOINTS BEYOND
25 LINE OF BACKER ROD & SEALANT INTERIOR AIR BARRIER INSTALLED FROM EXTERIOR @ VERTICAL PRECAST PANEL JOINTS BEYOND
26 TRANSVERSE DRAINAGE BEAD
27 WEEP DRAIN IN BACKER ROD & SEALANT EXTERIOR WEATHER SEAL @ VERTICAL PRECAST PANEL JOINTS BEYOND
28 SCHEDULED BASE AND FLOORING
29 HSS 2" X 6" X 1/8"
30 HSS 6" X 3" X 3/8"
31 CONTINUOUS BATTEN WITH TAMPERPROOF FASTENERS AT 12" O.C. TYPICAL AT ALL W/IF CONTACT POINTS WITH FENCE FRAME.
32 HHS 2" X 2" X 1/8"
33 PLACE 2500 PSI NORMAL WEIGHT CONCRETE OR USE FIBER-MESH CONCRETE PER MFR. RECOMMENDATIONS. (a) ROUGHEN THE EXISTING SLAB. (b) PROVIDE BONDING AGENT PER SPECS.
34 RUB EXPOSED CONCRETE CURB SURFACES AND COAT WITH TEXCOTE XL70 SAND TEXTURE. COLOR TO MATCH EFC-1, OR ARCH. APPROVED EQUAL.

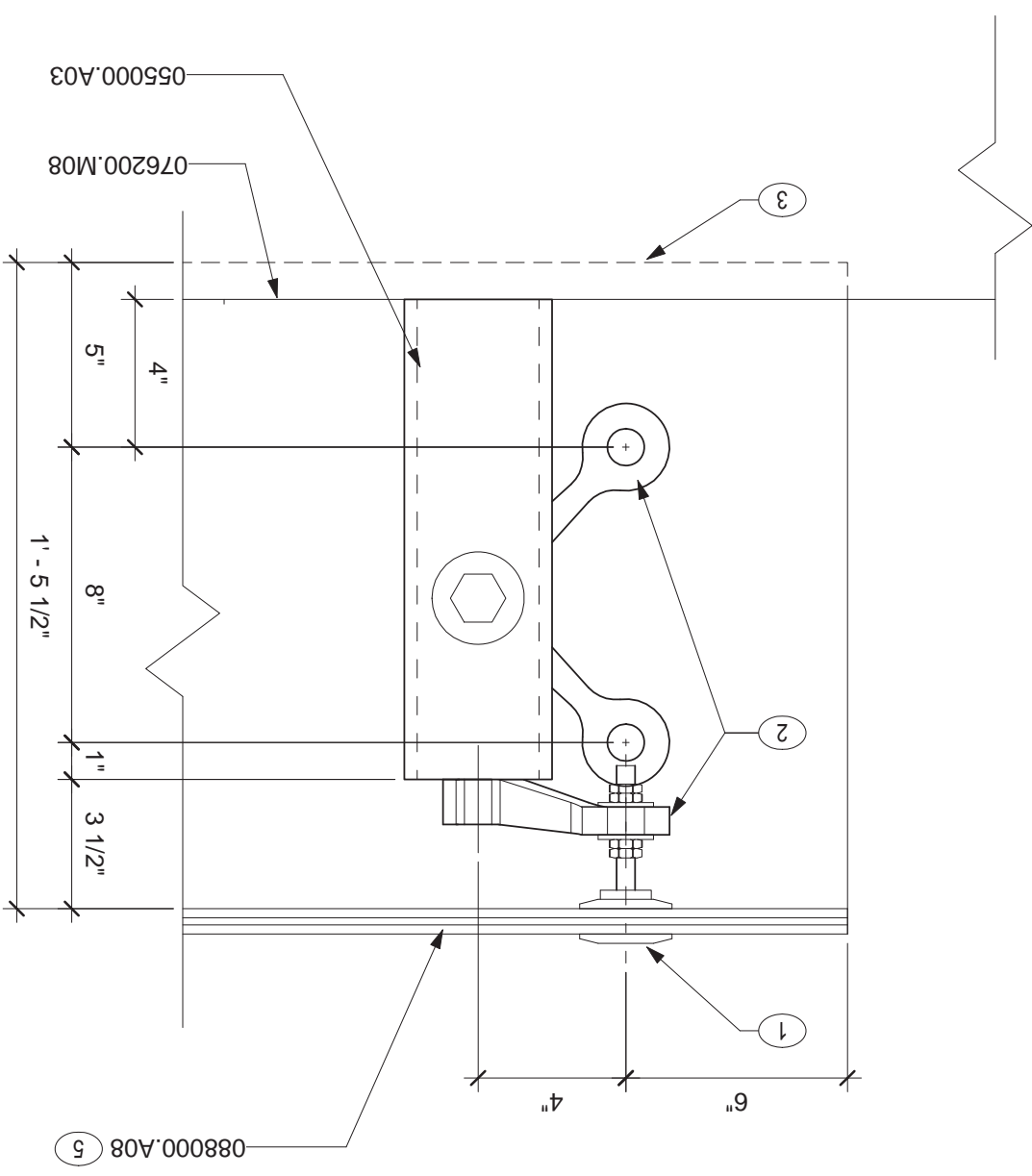
MATERIAL NOTES

- 033000.A08 CONCRETE CURB
033000.B05 BONDED CONCRETE TOPPING
034500.A03 PRECAST CONCRETE WALL PANEL
035200.A01 LIGHTWEIGHT INSULATING CONCRETE SYSTEM
051200.A03 STEEL TUBE BEAM
051200.E01 STEEL ANGLE
054000.D04C STEEL STUD 4"
055000.T03 EXPANSION BOLT
055000.T04 EXPANSION JOINT PRESSURE TREATED WOOD BLOCKING
061000.P01 PLYWOOD PANEL
07143.A01 WATERPROOFING MEMBRANE
07143.A02 DECK PAVERS AND PEDSTALS
07143.A03 PROTECTIVE MEMBRANE ROOFING INSULATION
07143.B02 DRAINAGE MAT
07213.A01 SPRAY FOAM INSULATION
07213.R10 BLANKET INSULATION UNFACED
075216.A01 MODIFIED BITUMEN ROOFING SYSTEM
075216.C04 PREFORMED CANT
075216.H10 MODIFIED BITUMEN WALL FLASHING
075216.H11 MODIFIED BITUMEN BASE FLASHING
076200.H02 COUNTERFLASHING
076200.M08 PARAPET COPING SYSTEM
079200.Q01 JOINT SEALANT
079200.Q02 BACKSTOP AND SEALANT
079200.Q11 SEALANT BED
079200.Q13 ABUSE-RESISTANT SEALANT
079513.A01 EXPANSION JOINT, EXTERIOR METAL FRAME AND COVER
08413.B02 FULL GLAZED STYLE AND RAIL DOOR
08443.A01 GLAZED ALUMINUM CURTAIN WALL
086653.A01 SECURITY WINDOW
087100.S20 THRESHOLD
088653.A01 SECURITY GLAZING
092216.C02 STEEL STUD RUNNER TRACK
092216.D04C STEEL STUD 4"
092400.M01 PORTLAND CEMENT PLASTER
092400.M01 CASING BEAD
092525.A01 HYDRAULIC LIME PLASTERING
092900.A01C GYPSUM BOARD, REGULAR 5/8"
092900.A02C GYPSUM BOARD, FIRE RESISTANT 5/8"
092900.B03 GLASS MAT COVERED OR REINFORCED GYPSUM SHEATHING
092900.C01C GYPSUM BOARD, IMPACT RESISTANT 5/8"

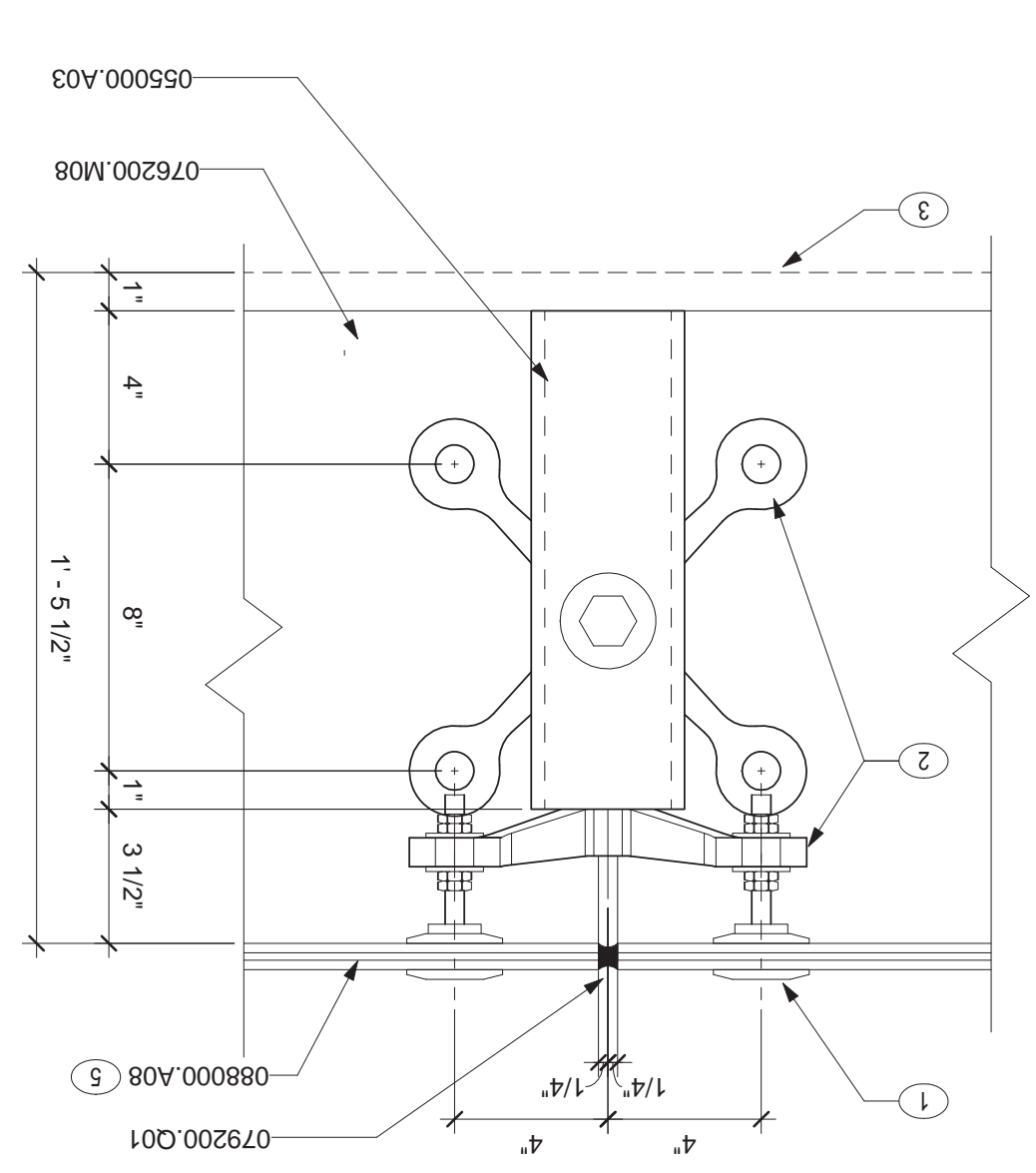
No.	Description	Date
1	AMENDMENT	07/29/2010
2	CPR 305	06/21/2012

VIA FORM 08-6231, OCT 1978

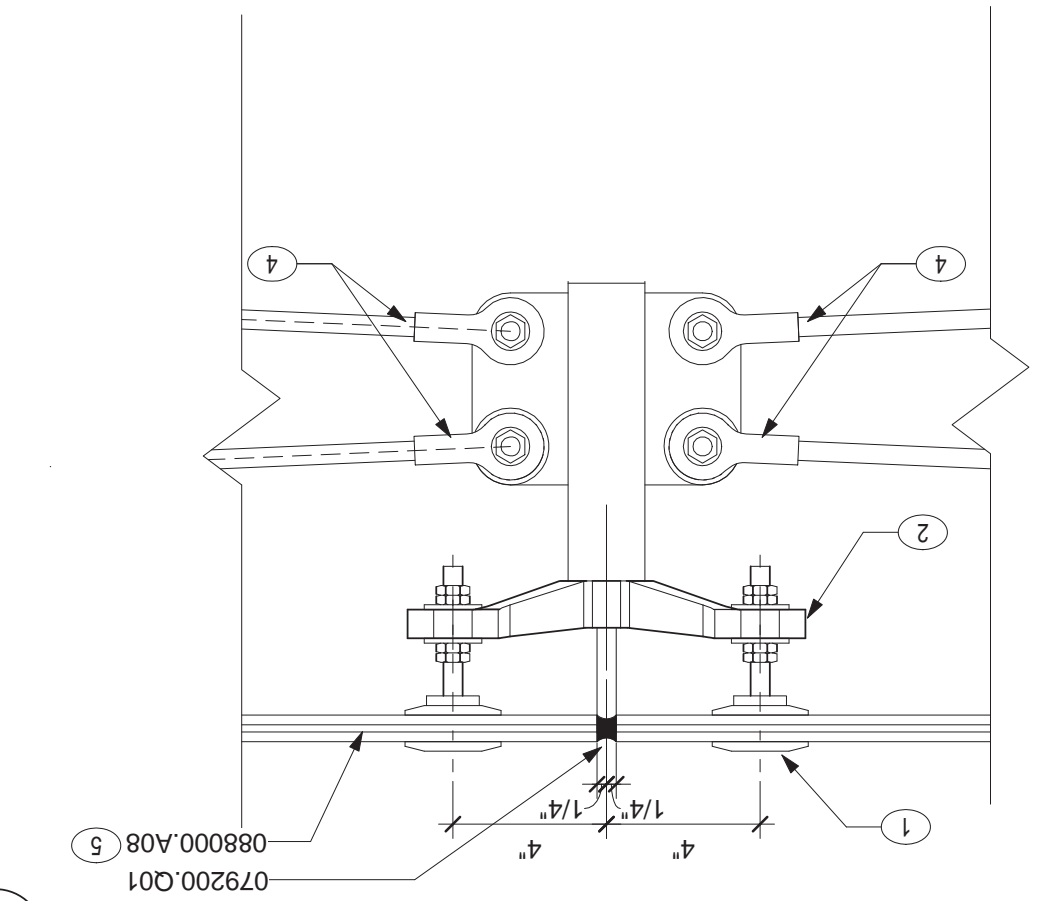
3 POINT SUPPORT GLAZING DETAIL



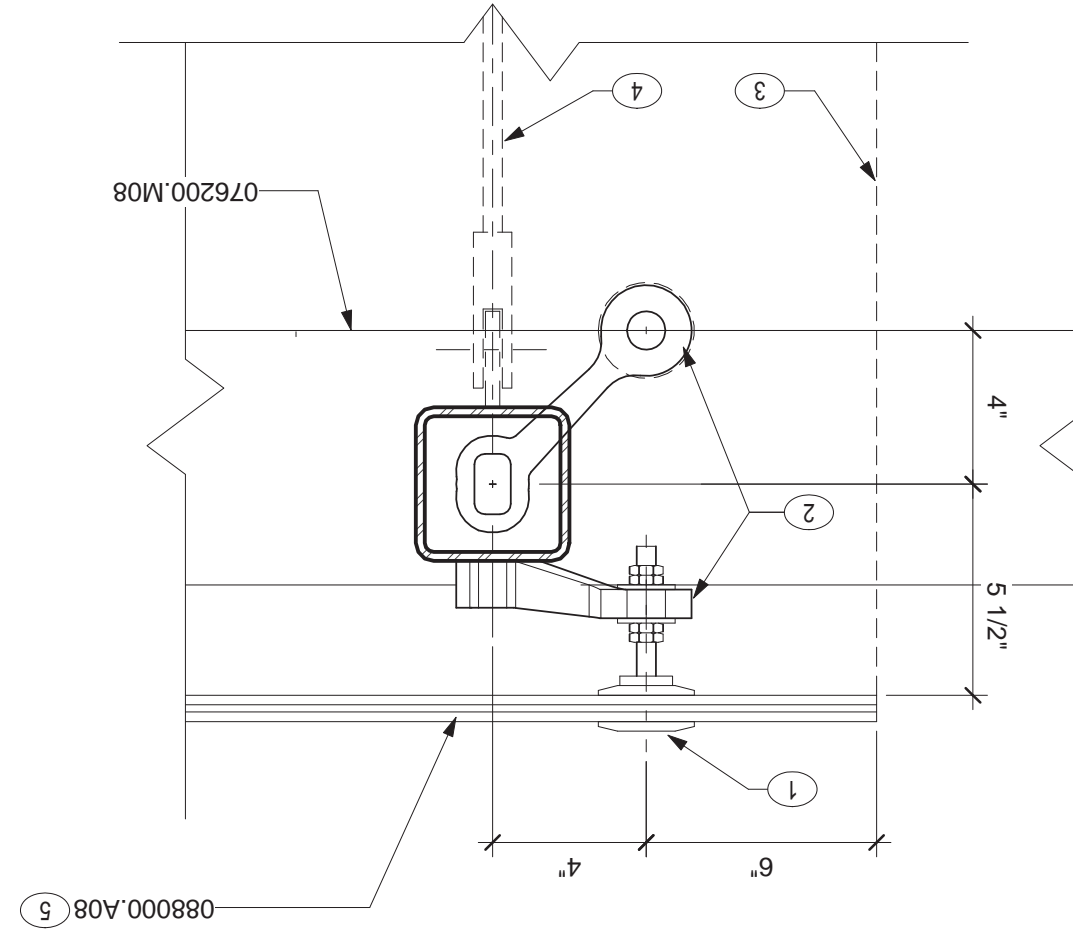
6 POINT SUPPORT GLAZING DETAIL



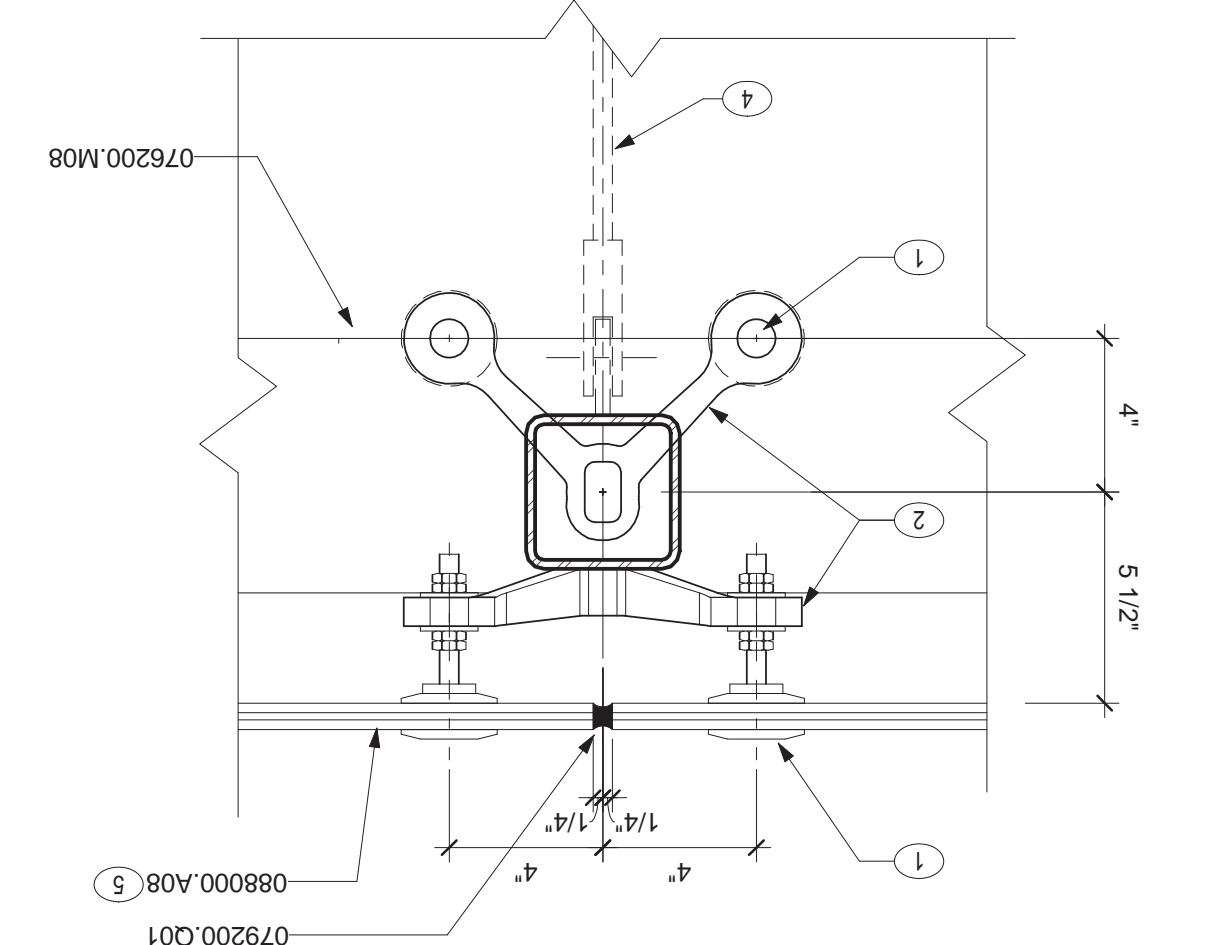
5 POINT SUPPORT GLAZING DETAIL



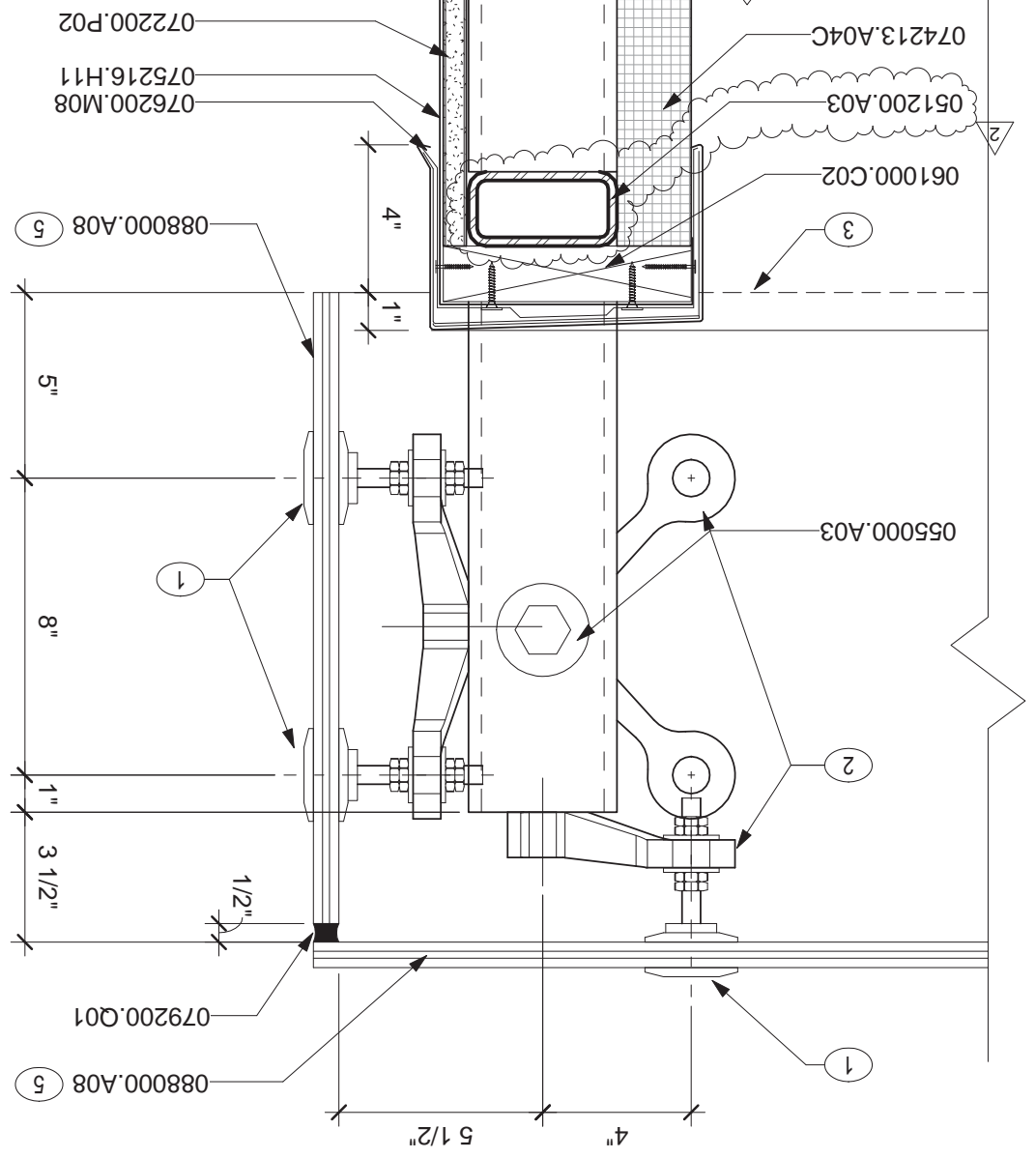
1 POINT SUPPORT GLAZING PLAN DETAIL



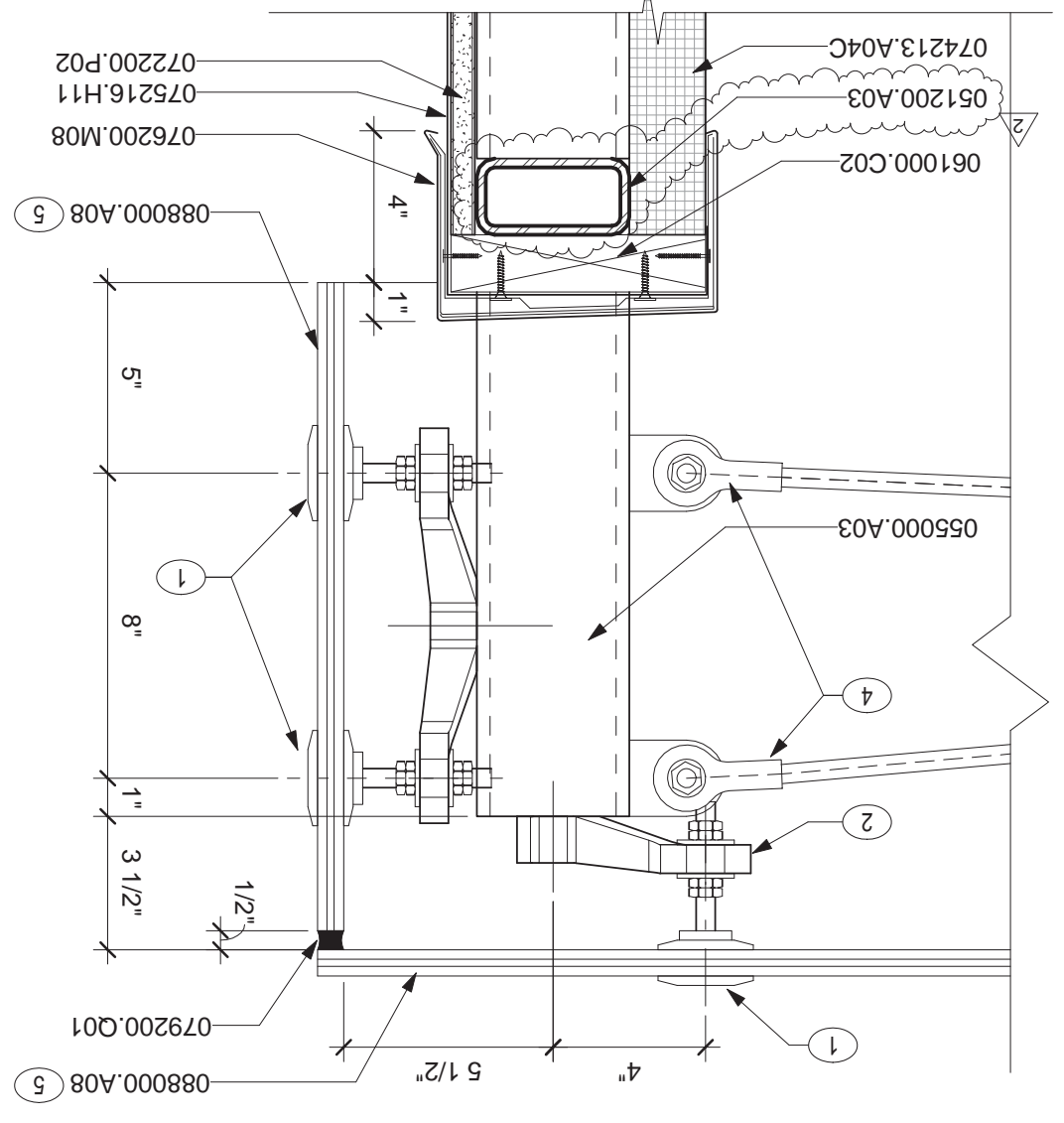
4 POINT SUPPORT GLAZING PLAN DETAIL



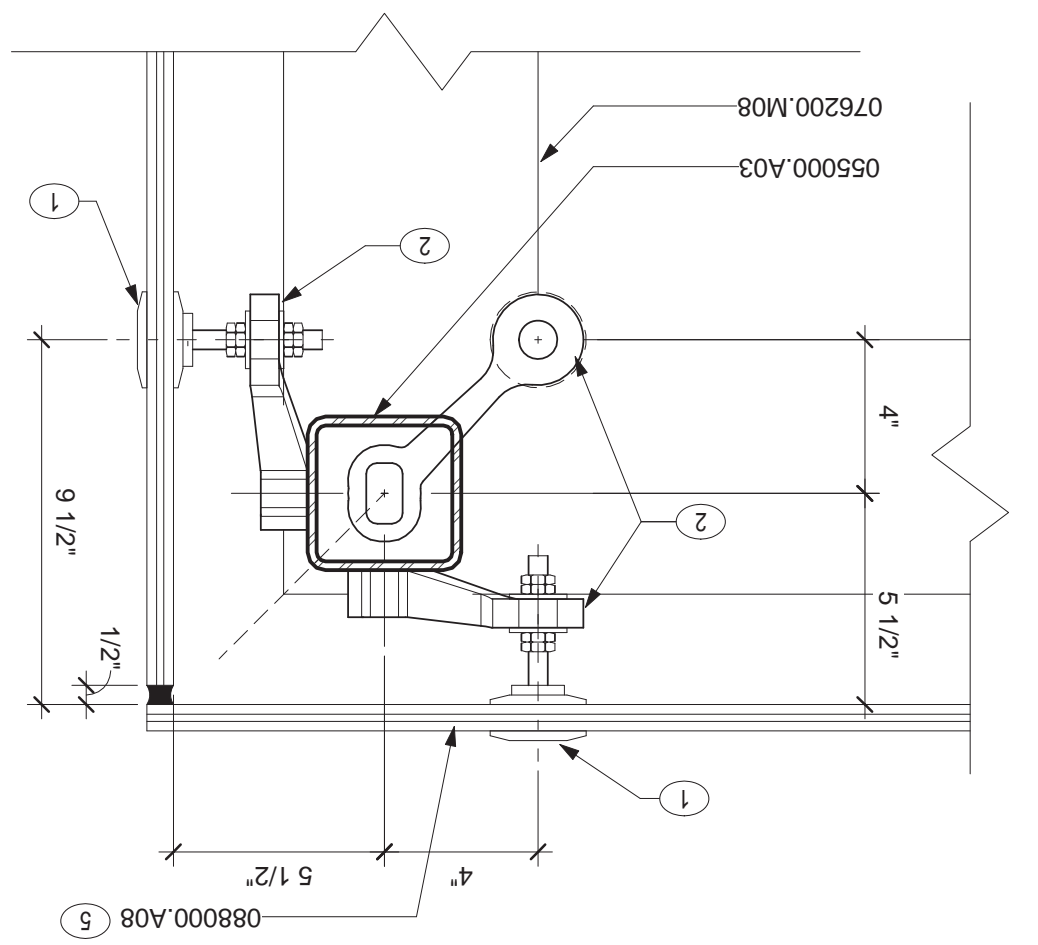
9 POINT SUPPORT GLAZING DETAIL



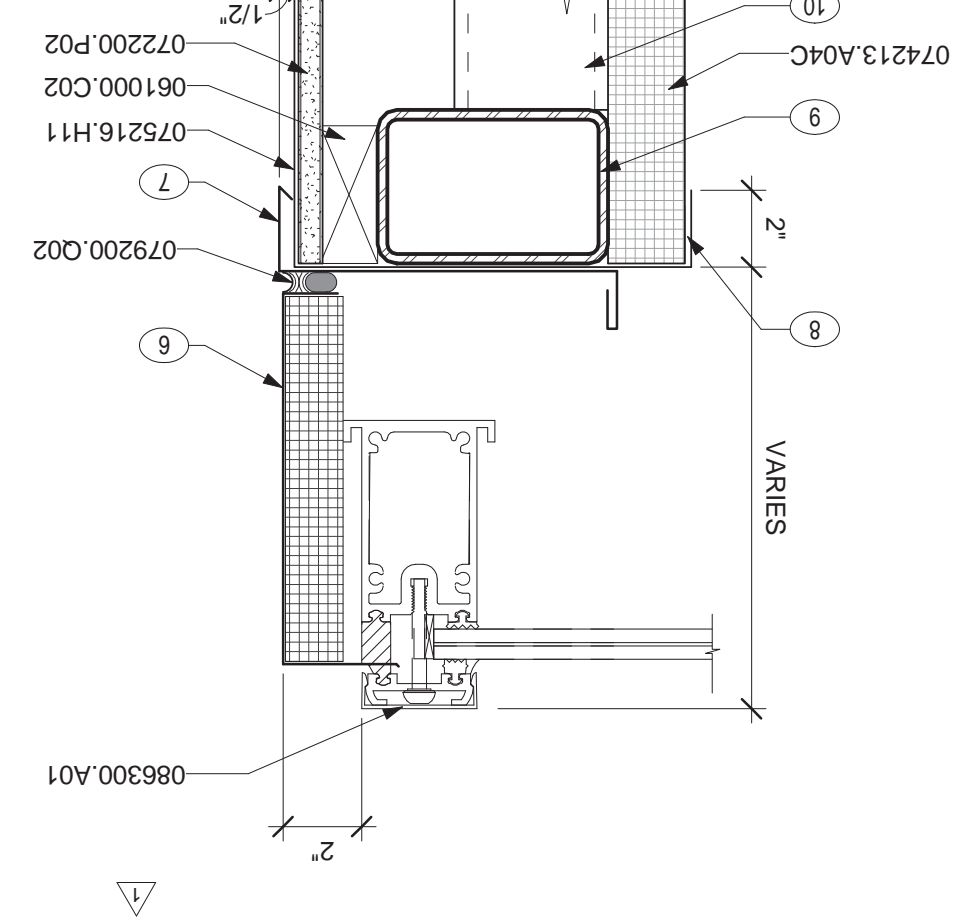
8 POINT SUPPORT GLAZING DETAIL



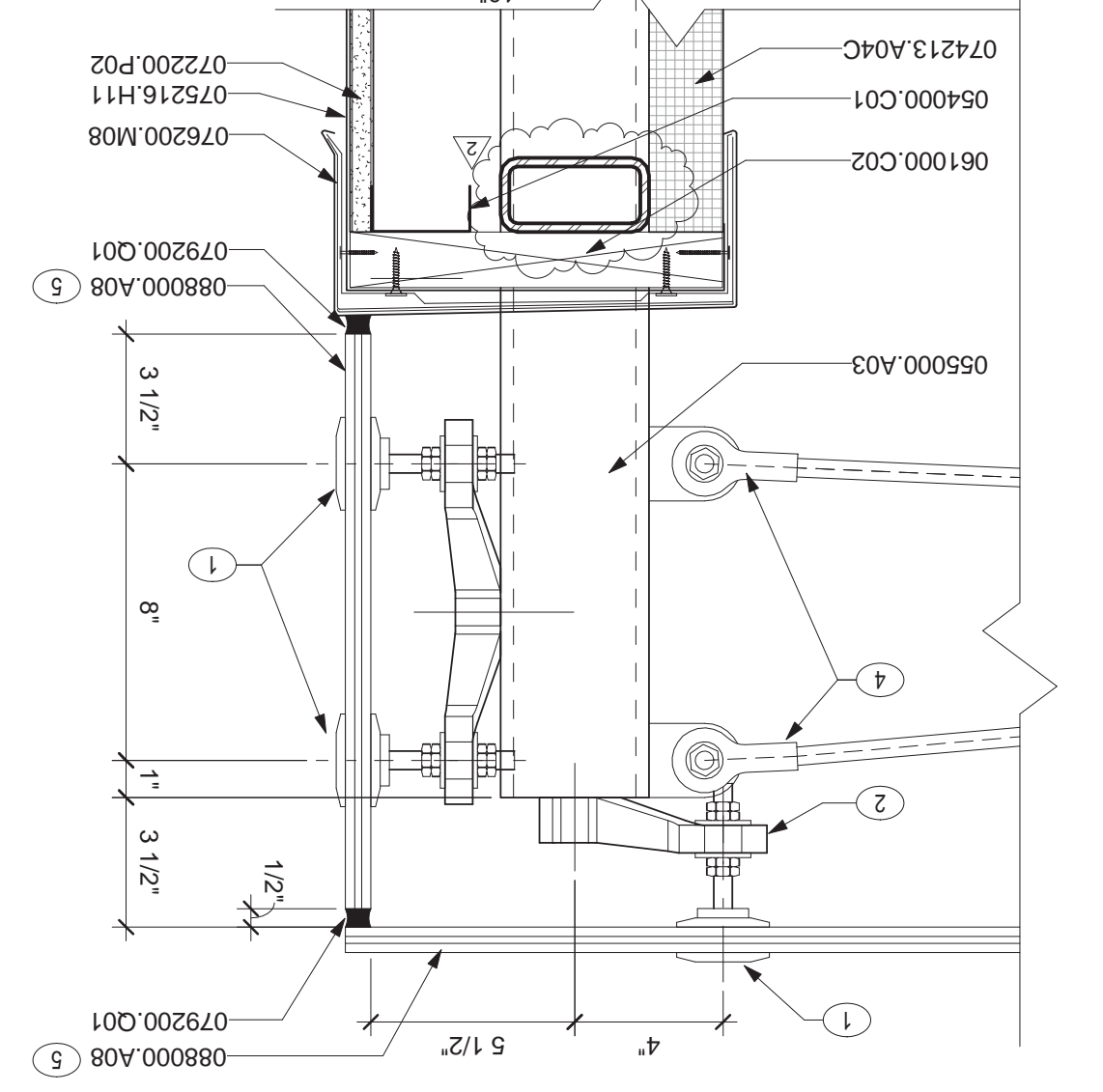
7 POINT SUPPORT GLAZING PLAN DETAIL



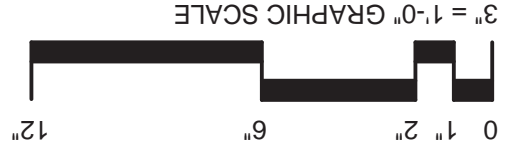
12 SECTION AT CLINIC VESTIBULE SKYLIGHT



11 POINT SUPPORT GLAZING DETAIL



BUILDING IS FULLY SPRINKLERED



NOTES:
A. REFER TO SHEET G-011 FOR STANDARD SYMBOLS AND ABBREVIATIONS.
B. SEE SHEET H-AE5, 175 FOR TYPICAL METAL PANEL DETAILS.
C. REFER TO SHEET H-AE5, 133 FOR TYPICAL PRECAST PANEL JOINTS & REVEALS.
D. SEE SHEET H-AE5, 001 FOR FIREPROOFING, INSULATION R-VALUES, AND GENERAL DETAILING INFORMATION.
KEYNOTES (00)
1 POINT SUPPORTED GLAZING SYSTEM BUTT, DESIGN AND ENGINEERING TO BE PROVIDED BY SKYLIGHT MANUFACTURER.
2 POINT SUPPORTED GLAZING SYSTEM SPIDER BRACKET, DESIGN AND ENGINEERING TO BE PROVIDED BY SKYLIGHT MANUFACTURER.
3 EDGE OF GLASS BEYOND MANUFACTURER.
4 POINT SUPPORTED GLAZING SYSTEM CABLE SPAN, DESIGN AND ENGINEERING TO BE PROVIDED BY SKYLIGHT MANUFACTURER.
5 PROVIDE INTERLAYER AS REQUIRED TO MEET DESIGN LOADS, AS A MINIMUM, PROVIDE 30 MIL PVB INTERLAYER.
6 ALUMINUM SHEET OVER RIGID INSULATION BY SKYLIGHT MANUFACTURER.
7 SILL FLASHING BY SKYLIGHT MANUFACTURER.
8 SHEET METAL TRIM WITH HEMMED EDGE, MATCH METAL PANEL FINISH.
9 4" X 6" X 3/16" HOLLOW STRUCTURAL SECTION BY METAL PANEL MANUFACTURER.
10 MISC. SUPPORT FRAMING TO BE DESIGNED AND ENGINEERED BY METAL PANEL MANUFACTURER.
MATERIAL NOTES
051200.A03 STEEL TUBE BEAM
054000.C01 STEEL STUD RUNNER TRACK
055000.A03 CONTINUOUS WOOD BLOCKING
07200.P02 GLASS MAT GYPSUM PROTECTION BOARD
074213.A04C FACTORY INSULATED WALL PANEL 2" THICK
075216.H11 MODIFIED BUTYLEN BASE FLASHING
076200.M08 PARAPET COPING SYSTEM
079200.Q01 JOINT SEALANT
086300.A01 BACKSTOP AND SEALANT
088000.A08 CLEAR LAMINATED GLASS

Approved: Project Director

Mark A. Beck

Drawing Title

HOSPITAL / CLINIC SKYLIGHT DETAILS

Project Title

A NEW HOSPITAL FOR VAMC ORLANDO, FLORIDA

Location

Orlando, Florida

Date

04 JUNE, 2010

Checked

BKH

Drawn

EB / RLF

Project Number

673-950

Building Number

01 AND 02

Drawing Number

H-AE5.551

Dwg: 1087 of 4322

Department of Veterans Affairs

OFFICE OF FACILITIES MANAGEMENT

ARCHITECT/ENGINEERS:

RLF

A JOINT VENTURE

ELLENBE BECKETT

145 Lincoln Avenue
White Park, Florida 32789
1001 G Street, NW, Suite 1000
Washington, D.C. 20001
407 647 1039
202 654 9300

Professional Seals:

REGISTERED ARCHITECT

Mark A. Beck

07-04-10

