

PARTIAL MECHANICAL FLOOR PLAN

SCALE: 1/4" = 10'

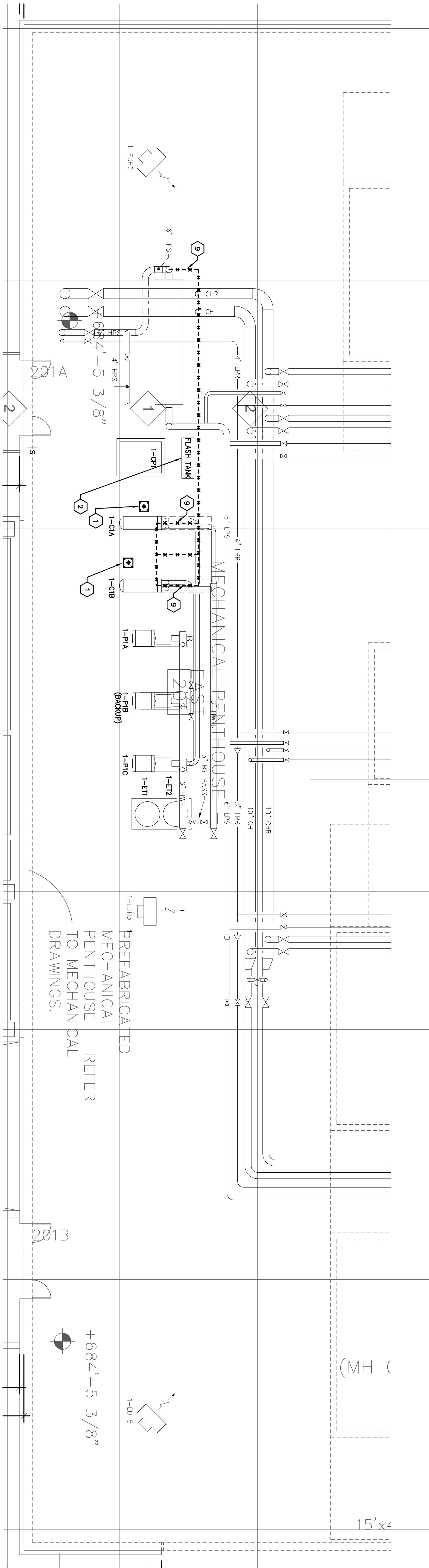
1

27 29 30 32 33 34 35 36

- CODED NOTES:**
- 1 REMOVE EXISTING TRAPS.
 - 2 CUTOFF SECTION OF VENT FROM FLASH TANK. SEE DETAIL.
 - 3 PROVIDE NEW HEAT EXCHANGER CUT INTO THE VENT LINE ABOVE THE FLASH TANK.
 - 4 TIE NEW 2-1/2" SHIMSKAR PIPING INTO EXISTING 6" HHWR LINE UPSTREAM OF EXISTING HEAT EXCHANGERS. PROVIDE FULL-SIZE BALANCE VALVE WITH MEMORY STOP BETWEEN TWO TEES.
 - 5 PROVIDE 2" VENT LINE FROM TOP OF HEAT EXCHANGER TO EXISTING VENT THRU ROOF.
 - 6 PROVIDE NEW PRESSURE REDUCING VALVE ASSEMBLY WITH BYPASS PER DETAIL.
 - 7 REPLACE NEW HX STEAM VALVE ASSEMBLY WITH BYPASS PER DETAIL.
 - 8 REPLACE STEAM TRAP WITH TRAPS RATED FOR 2400#/HR AT 15 PSI.
 - 9 REMOVE EXISTING STEAM PIPING FROM HEAT EXCHANGER BACK TO 6" MAIN.

GENERAL PIPING NOTE:

A. FOR ADDITIONAL INFORMATION SEE PIPING DETAIL ON SHEET 2-H15



PARTIAL DEMO MECHANICAL FLOOR PLAN

SCALE: 1/4" = 10'

1

Revisions:		CONSULTANTS:		ARCHITECT:		Project Title		Building Number		Office of Facilities Management	
FINAL CD SUBMISSION - FOR CONSTRUCTION		FREDERICK, FREDERICK & HELLER		Perspectus		EAST PENTHOUSE - MECHANICAL ROOM - MECHANICAL PLAN		1		2-H7	
06-18-12		777 EAST ROXANNE ROAD BROADVIEW HTS., OHIO 44147 TEL: (440) 944-4444 FAX: (440) 944-4444		13212 Shaker Square Suite 204 Cleveland, Ohio 44120 P: 216.752.1800 F: 216.752.3833		Approved Project Director		VAMC - WADE PARK		Department of Veterans Affairs	
Date		Date		Date		Date		Date		Date	
1		2		3		4		5		6	
7		8		9		10		11		12	