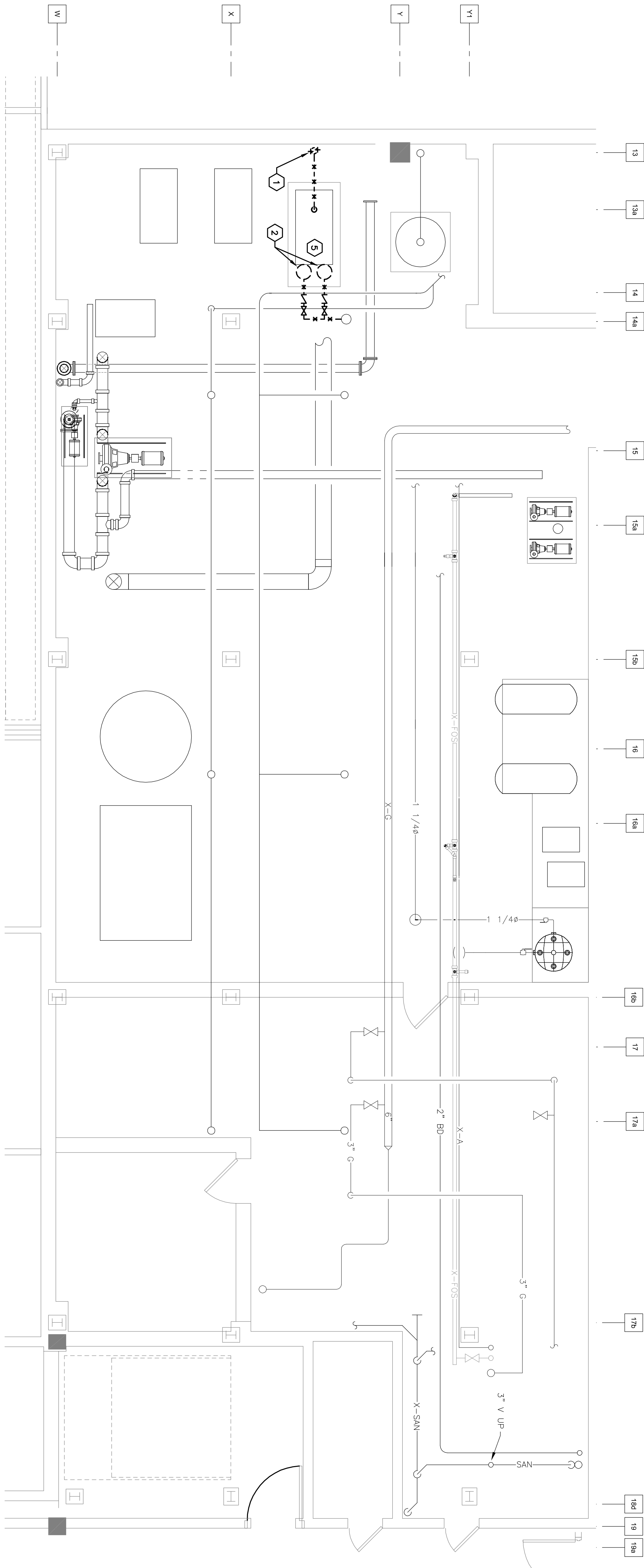


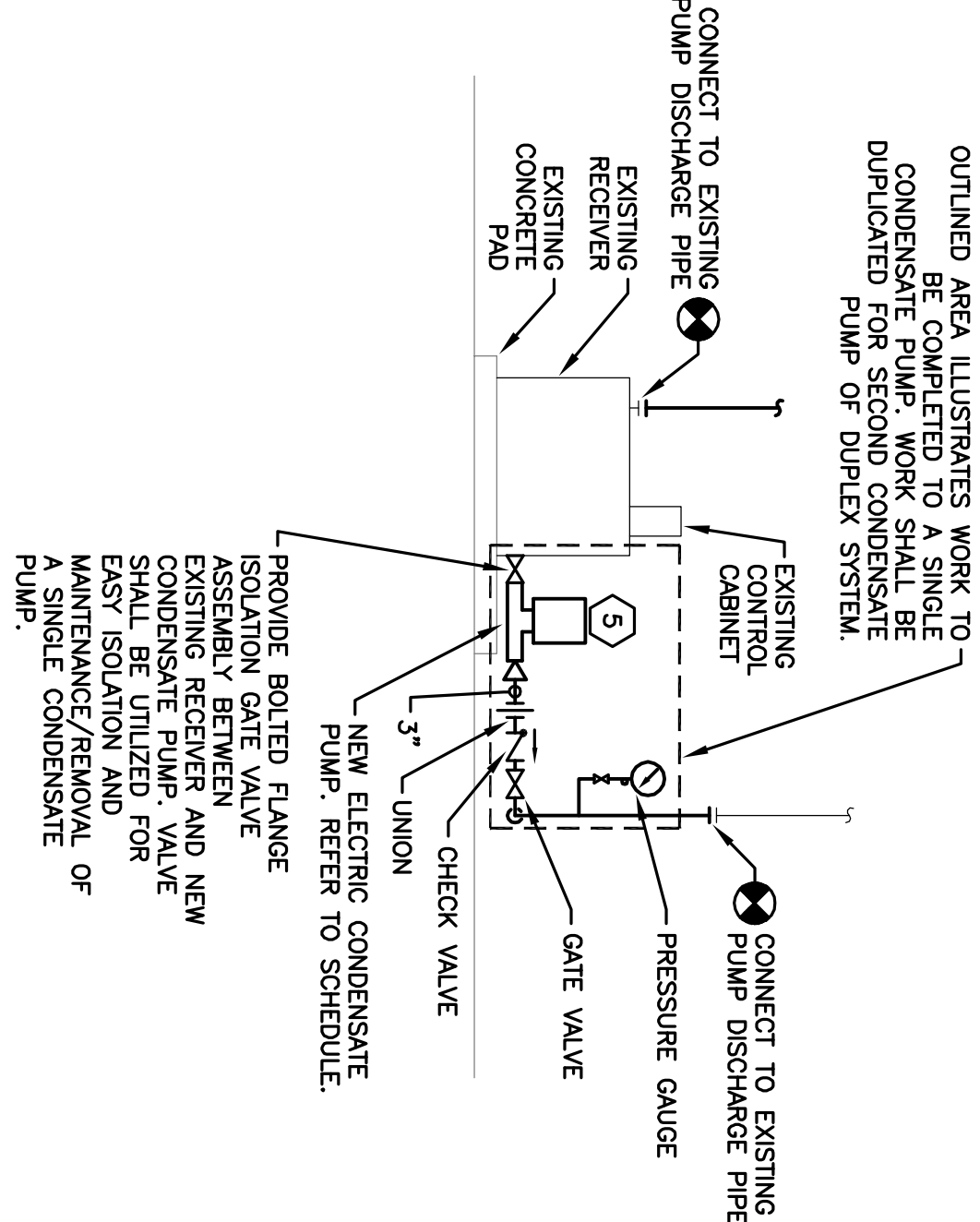
BOILER ROOM ASH PIT BASEMENT MECHANICAL PLAN 2



BOILER ROOM ASH PIT BASEMENT DEMOLITION PLAN 1

Revisions:		Date	
FINAL CD SUBMISSION - FOR CONSTRUCTION		06-18-12	
CONSULTANTS:			
FREDERICK, FREDERICK & HELLER			
672 EAST ROXATION ROAD			
BROADVIEW HTS., OHIO 44147			
TEL (440) 546-4466			
FAX (440) 546-4466			
ARCHITECT:			
Drawing Title			
BOILER ROOM ASH PIT BASEMENT MECHANICAL PLAN			
Approved Project Director			
Location			
VAMC - WADE PARK			
Date			
06-18-12			
Checked			
DAD			
Drawn			
LDH			
Dwg. of			
2-H1			
Project Number			
541-12-105			
Building Number			
1			
Office of Facilities Management			
Department of Veterans Affairs			

- CODED NOTES:
- REMOVE EXISTING 1-1/2" CONDENSATE PUMP RECEIVER VENT UP THROUGH BUILDING. FIELD VERIFY EXISTING CONDITIONS.
 - EXISTING ELECTRIC CONDENSATE PUMP TO BE REMOVED. REMOVE DISCHARGE PIPING UP TO EXISTING 3" DISCHARGE MAIN TO BE RECONNECTED. REFER TO NEW PLAN AND DETAIL (THIS DRAWING) FOR ADDITIONAL INFORMATION.
 - CONNECT NEW ELECTRIC CONDENSATE PUMPS TO EXISTING RECEIVER. PROVIDE FLANGED ISOLATION VALVE ASSEMBLY BETWEEN PUMP AND RECEIVER FOR EASE OF PUMP MAINTENANCE. REFER TO DETAIL (THIS DRAWING) FOR ADDITIONAL INFORMATION.
 - TRANSITION 2" RECEIVER VENT OUTLET TO 3". ROUTE NEW 3" RECEIVER VENT UP THROUGH BOILER PLANT AND VENT THROUGH ROOF. VENT PANT SHALL MATCH PREVIOUSLY REMOVED BOILER PLANT VENT. PROVIDE 1/2" THICK COPPER FLASHING. PROVIDE 1/2" THICK COPPER FLASHING AND PATCH ROOF AS REQUIRED TO ACCOMMODATE LARGER PIPE PENETRATION.
 - DISCONNECT POWER TO PUMP MOTORS AND PULL NEW #12 THIN COPPER WIRESTRONG #12 IN NEW LIQUID-TIGHT FLEXIBLE METAL CONDUIT. REPLACE OVERLOAD ELEMENTS TO MATCH MOTOR RATINGS. ALL WORK SHALL BE DONE IN ACCORDANCE WITH LATEST NEC.



DUPLEX CONDENSATE PUMP SYSTEM DETAIL

SCALE: NONE