

ABBREVIATIONS

A	AMPER(S)
A/C	AIR CONDITIONING UNIT
ADA	AMERICANS WITH DISABILITIES ACT
AFC	ABOVE FINISHED CEILING
AFF	ABOVE FINISHED FLOOR
AFG	ABOVE FINISHED GRADE
AHU	AIR HANDLING UNIT
AIC	ANTICIPATED INTERRUPTING CURRENT
ALT	ALTERNATE
ATS	AUTOMATIC TRANSFER SWITCH
AWG	AMERICAN WIRE GAUGE
BKR	BREAKER
C	CONDUIT
CATV	CABLE ANTENNA TELEVISION
CB	CIRCUIT BREAKER
CKT	CIRCUIT
CT	CURRENT TRANSFORMER
DIST	DISTRIBUTION
DO	DOOR OPERATOR
EC	ELECTRICAL CONTRACTOR
ECB	ENCLOSED CIRCUIT BREAKER
EM	EMERGENCY
EMT	ELECTRICAL METALLIC TUBING
ETR	EXISTING TO REMAIN
EWC	ELECTRIC WATER COOLER
EX	EXISTING
FA	FIRE ALARM
FDR	FEEDER
FLA	FULL LOAD AMPS
FPC	FIRE PROTECTION CONTRACTOR
FSC	FOOD SERVICE CONTRACTOR
GC	GENERAL CONTRACTOR
GEN	GENERATOR
GF,GF	GROUND FAULT INTERRUPTER
GND	GROUND
HID	HIGH INTENSITY DISCHARGE
HP	HORSE POWER
HVAC	HEATING, VENTILATING, A/C CONTRACTOR
HWR	HEAVY WALL RIGID CONDUIT
IMC	INTERMEDIATE METALLIC CONDUIT
J-BOX	JUNCTION BOX
KEC	KITCHEN EQUIPMENT CONTRACTOR
KV	KILOVOLTS
KVA	KILOVOLT AMPERE(S)
KW	KILOWATT(S)
LCP	LIGHTING CONTROL PANEL
MCA	MINIMUM CIRCUIT AMPS
MCB	MAIN CIRCUIT BREAKER
MCC	MOTOR CONTROL CENTER
MCM	THOUSAND CIRCULAR MIL(S)
MDP	MAIN DISTRIBUTION PANEL
MGAP	MEDICAL GAS ALARM PANEL
MLO	MAIN LUG ONLY
MTS	MANUAL TRANSFER SWITCH
N.E.C.	NATIONAL ELECTRIC CODE
NIC	NOT IN CONTRACT
NTS	NOT TO SCALE
OH	OVERHEAD
PLGC	PLUMBING CONTRACTOR
PNL	PANEL
PR	PRIMARY
PVC	POLYVINYL CHLORIDE
(R)	ROOF
REC	RECEPTACLE
RT	RAIN TIGHT
SCP	SUMP PUMP CONTROL PANEL
SEC	SECONDARY
SPC	SPECIAL PURPOSE CONNECTION
SWBD	SWITCHBOARD
TC	TIME CLOCK
TCC	TEMPERATURE CONTROL CONTRACTOR
TOP	TEMPERATURE CONTROL PANEL
TOPS	TEMPERATURE CONTROL POWER SUPPLY
TELE	TELEPHONE
TV	TELEVISION
TVSS	TRANSIENT VOLTAGE SURGE SUPPRESSION
TYP	TYPICAL
UC	UNDERCABINET
UG	UNDERGROUND
UH	UNIT HEATER
UN.O.	UNLESS NOTED OTHERWISE
UPS	UNINTERRUPTED POWER SYSTEM
V	VOLT(S)
VFD	VARIABLE FREQUENCY DRIVE
W	WATT(S)
WP	WEATHERPROOF
XFMR	TRANSFORMER

NOTE:  
\* THIS COMPRISES A COMPLETE LIST OF ITEMS. NOT ALL ABBREVIATIONS MAY NECESSARILY BE REPRESENTED ON THIS PROJECT.

TRANSFORMER SCHEDULE

DESIGNATION	MANUFACTURER	ROOM LOCATION	PRIMARY POWER ORIGIN	PRIMARY BREAKER	KVA	PRIMARY VOLTAGE	SECONDARY VOLTAGE	TEMP. RISE	MOUNT
T1	PER SPEC.	BOILER BUILDING #2	ATS-2	175A/3P	112.5	480V	120/208V	150 DEG.	FLOOR

PANEL SCHEDULE

PANEL DESIGNATION	MANUFACTURER	LOCATION	TYPE	BUS AMPS	MCB	MLO	VOLTAGE RATING	PHASE WIRE	NO.	CKT.	TUBS MOUNT	RATING (AIC)	CIRCUIT BREAKERS												NOTES
													QTY.	AMP	POLE	TYPE	QTY.	AMP	POLE	TYPE	QTY.	AMP	POLE	TYPE	
EQ	SQUARE D ONLY	S001	PP	400A	-	400A	120/208	3-PHASE 4-WIRE	1	-	SURFACE	42K	4	20	1	TM	1	70	3	TM				1	
													2	30	3	TM	2	100	3	TM					
													1	50	3	TM	1	125	3	TM					
													1	200	3	TM	2	-	3	SO					
CR	SQUARE D ONLY	S001	PP	400A	-	400A	120/208	3-PHASE 4-WIRE	1	-	SURFACE	42K	3	20	1	TM	1	150	3	TM				1	
													4	100	3	TM	1	200	3	TM					
													1	125	3	TM	1	100	3	SO					
													1	40	3	TM	1	200	3	TM					
SBA	SQUARE D ONLY	S001	PP	800A	-	800A	120/208	3-PHASE 4-WIRE	1	-	SURFACE	42K	1	150	3	TM	2	225	3	SP				1	
													4	225	3	TM	1	100	3	SP					
													28	20	1	TM									
													2	20	1	SP									
EB	SQUARE D ONLY	B299B-1	P	225A w/SFL	-	225A w/SFL	120/208	3-PHASE 4-WIRE	1	36	RECESSED	22K	10	20	1	TM							1.2		
													1	30	1	GFCI									
													25	20	1	SP									
													30	20	1	TM									
ES1	SQUARE D ONLY	1277A	P	225A	-	225A	120/208	3-PHASE 4-WIRE	1	42	RECESSED	22K	1	30	1	GFCI							1		
													25	20	1	SP									
													30	20	1	TM									
CPA	SQUARE D ONLY	3299A-1	P	225A	-	225A	120/208	3-PHASE 4-WIRE	1	36	RECESSED	22K											1		
CPB	SQUARE D ONLY	3299A-1	P	225A	-	225A	120/208	3-PHASE 4-WIRE	1	36	RECESSED	22K	30	20	1	TM							1		
EDP	SQUARE D ONLY	BOILER BUILDING #2	PP	400A	400A	-	120/208	3-PHASE 4-WIRE	1	I-LINE	SURFACE	22K	1	50	3	TM	3	100	3	TM				3	
													1	70	3	TM	2	150	3	TM					
													1	90	3	TM	1	200	3	TM					

ABBREVIATIONS:  
ECB - ENCLOSED CIRCUIT BREAKER  
L - LOAD CENTER  
MCC - MOTOR CONTROL CENTER  
P - PANELBOARD  
PP - POWER PANEL  
SWBD - SWITCHBOARD  
FTL - FEED THRU LUGS  
GFCI - GROUND FAULT CIRCUIT INTERRUPTING  
SFL - SUB FEED LUGS  
ST - SHUNT-TRIP  
TM - THERMAL-MAGNETIC  
SP - SPARE BREAKER  
SO - SPACE ONLY

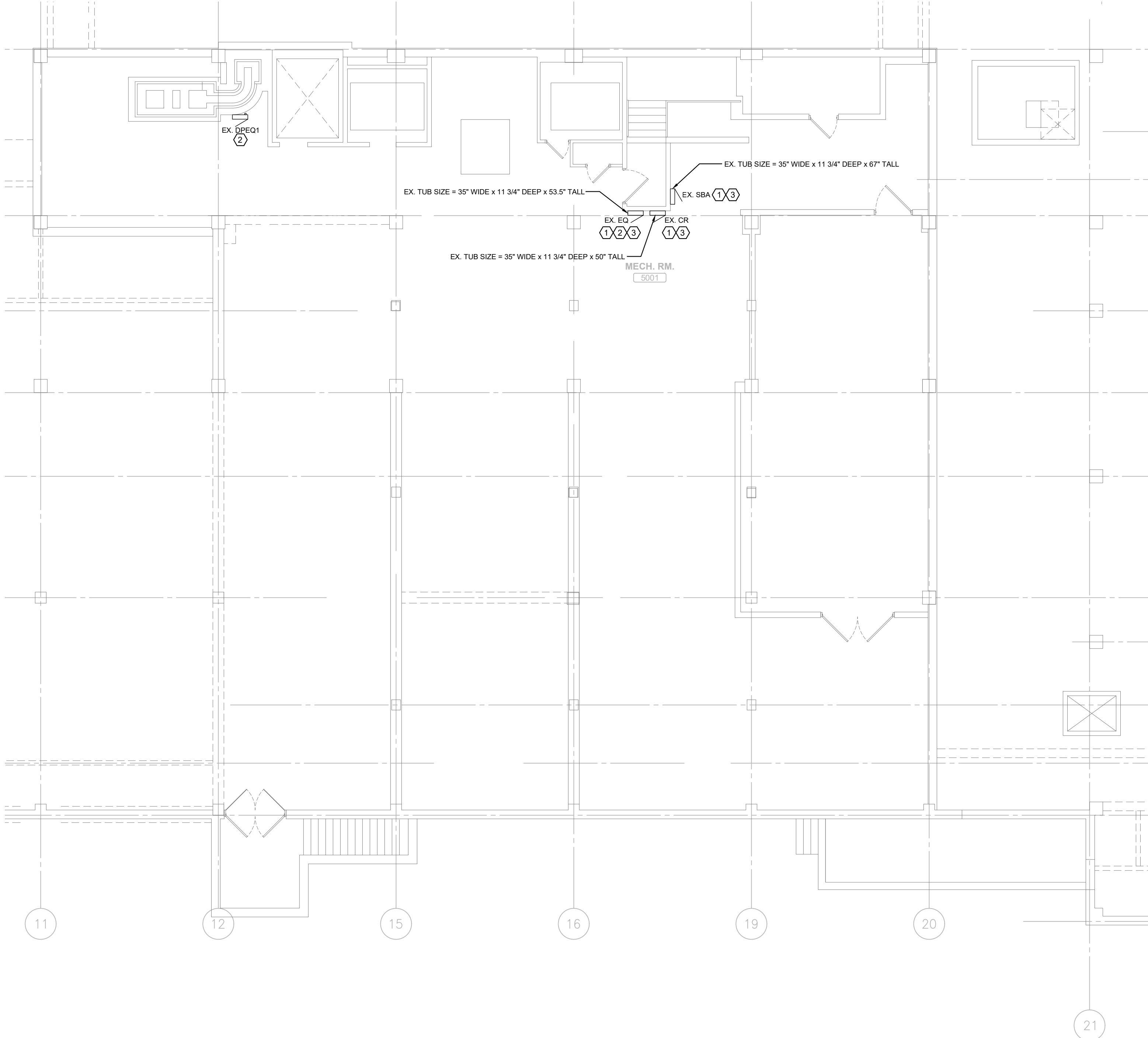
NOTES:  
1. REPLACE INTERIOR OF EXISTING PANEL. UTILIZE EXISTING TUB. RECONNECT EXISTING CIRCUITS TO REMAIN TO NEW BREAKER(S). PROVIDE NEW CIRCUIT DIRECTORY.  
2. PROVIDE PANEL WITH SUB LUGS.  
3. REPLACE PANEL IN ITS ENTIRETY. RECONNECT EXISTING LOADS/CONDUIT AND WIRING.

ELECTRICAL SYMBOLS LEGEND

SYMBOL	DESCRIPTION (MOUNTING)	SYMBOL	DESCRIPTION (MOUNTING)
RACEWAYS		POWER EQUIPMENT	
	CONDUIT STUBBED OR CAPPED		PANELBOARD (EXISTING, NEW)
	CONDUIT RISING UP		ENCLOSED CIRCUIT BREAKER (ECB) (EXISTING, NEW)
	CONDUIT DROPPING DOWN		GENERATOR ANNUNCIATOR PANEL (GAP) (EXISTING, NEW)
	CONDUIT SLEEVES THRU WALL ABOVE ACCESSIBLE CEILING		ATS ANNUNCIATOR PANEL (ATSA) (EXISTING, NEW)
	JUNCTION & PULL BOX		TRANSFORMER
	BLANK JUNCTION BOX (1)		AUTOMATIC TRANSFER SWITCH (ATS)
			DISCONNECT SWITCH - FUSED, NON-FUSED

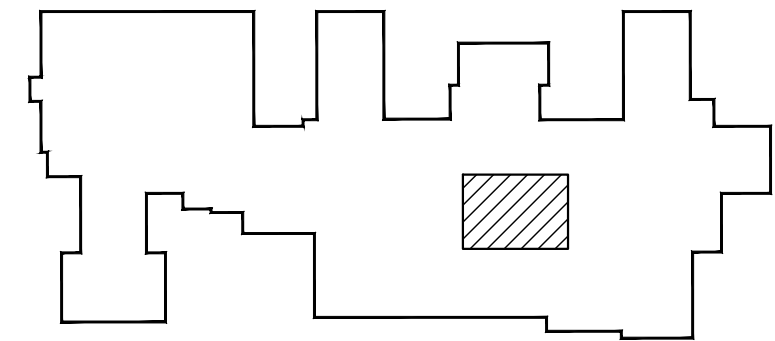
NOTES:  
(1) 1" CONDUIT STUBBED UP TO ACCESSIBLE SPACE ABOVE CEILING FROM 4" SQUARE JUNCTION BOX W/ SINGLE GANG DEVICE RING. ALL CONDUIT STUBS SHALL BE TERMINATED W/ BUSHINGS.

\* THIS COMPRISES A COMPLETE LIST OF ITEMS. NOT ALL SYMBOLS MAY NECESSARILY BE REPRESENTED ON THIS PROJECT.



PLAN KEYED NOTES

- (THIS SHEET ONLY)
- REPLACE EXISTING EMERGENCY POWER DISTRIBUTION PANEL, INTERIOR, BREAKERS AND DOOR WITH NEW. UTILIZE EXISTING TUB, CONDUITS AND CONDUCTORS. REFERENCE THE PANEL SCHEDULE.
  - UTILIZE EXISTING PANEL "DPEC1" TO PROVIDE TEMPORARY POWER FOR THE SUMP PUMP LOAD WITHIN EXISTING PANEL "EQ". COORDINATE WITH OWNER.
  - TYPICAL WORKING HOURS REQUIRED FOR THIS WORK WILL BE WEEKENDS.



N  
KEY PLAN  
NO SCALE

BID DOCUMENT SET

CORRECT ELECTRICAL DEFICIENCIES  
PROJECT # 585-16-101

325 H STREET | IRON MOUNTAIN, MI | 49801

BERNERS  
SCHOBBER

310 Pine Street | Green Bay, WI 54301 | 920-432-4865 | www.berniers-schobber.com

REVISION	DATE:
50% OWNER REVIEW SET	APRIL 04, 2017
FINAL REVIEW OWNER SET	APRIL 13, 2017
BID SET	APRIL 27, 2017

ELECTRICAL LEGEND, SUB-BASEMENT -  
ELECTRICAL PLAN & SCHEDULES

E1  
DATE:  
COMMISSION  
5700.02

©2017, BERNERS-SCHOBBER ASSOCIATES, INC.  
THE COPYRIGHT OWNER GRANTS THE PLANNER A LIMITED LICENSE TO USE THIS DRAWING FOR THE EXPRESS PURPOSE OF CONSTRUCTING THE PROJECT DEPICTED THEREON. ANY OTHER USE IS STRICTLY PROHIBITED. THIS DRAWING IS NOT TO BE COPIED IN ANY FORM OR UPLOADED TO WEBSITES EXCEPT AS AUTHORIZED BY BERNERS-SCHOBBER ASSOCIATES, INC.

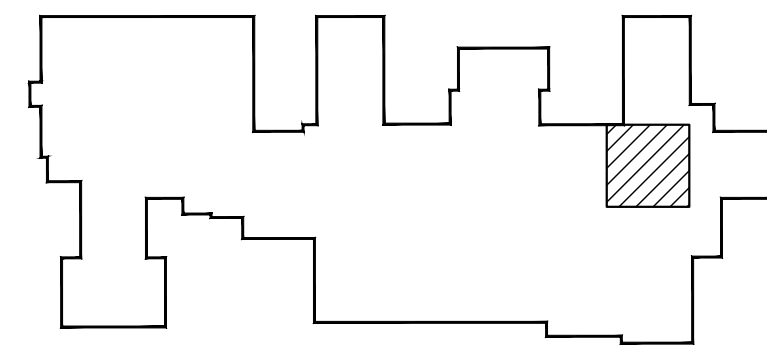




PLAN KEYED NOTES

(THIS SHEET ONLY)

- REPLACE THE INTERIOR, BREAKERS AND DOOR OF THE EXISTING PANEL. REFERENCE THE PANEL SCHEDULE. UTILIZE EXISTING TUB, CONDUITS AND CONDUCTORS.
- DISCONNECT/REMOVE THE EXISTING BREAKER. SALVAGE THE CONDUCTORS FOR REUSE AS FEASIBLE. SALVAGE THE EXISTING ENCLOSURE AS A PULL BOX. FABRICATE A NEW BOX COVER.
- UTILIZE THE NEW SUB-FEED LUGS OF NEW INTERIOR WITHIN "EB" TO REFERENCE EXISTING PANEL "EBA" VIA EXISTING 4-#30 AND #6ND IN 2". UTILIZE EXISTING PULL BOX (OLD "ECB-EBA" ENCLOSURE). PROVIDE ADDITIONAL CONDUCTORS AS REQUIRED.
- THE TYPICAL WORK HOURS REQUIRED FOR THIS WORK WILL BE FROM 4:30PM TO 7:00AM DAILY.



**KEY PLAN**  
NO SCALE

BID DOCUMENT SET

CORRECT ELECTRICAL DEFICIENCIES  
PROJECT # 585-16-101

325 H STREET | IRON MOUNTAIN, MI | 49801

**BERNERS-SCHOB**

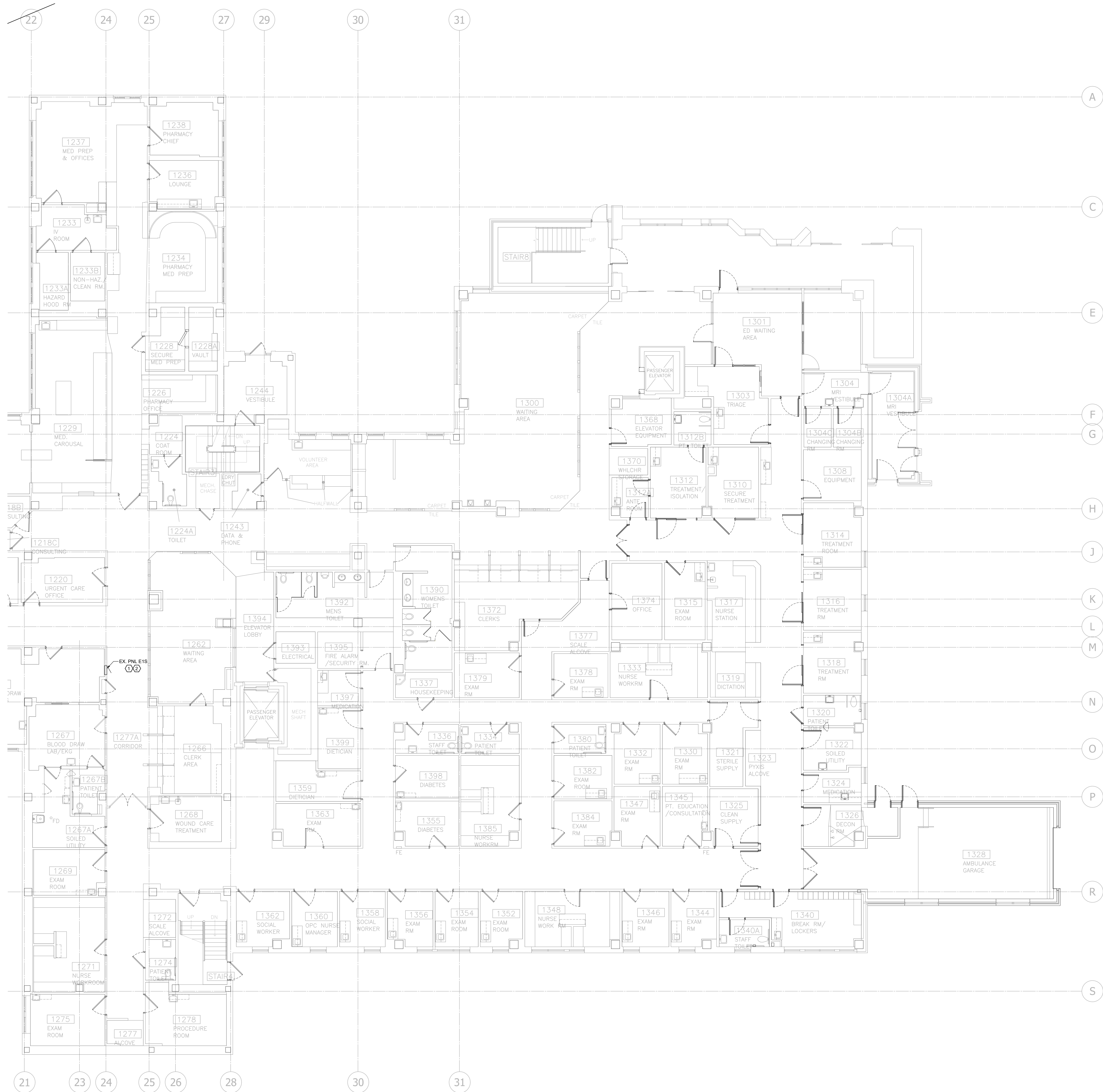
310 Pine Street | Green Bay, WI 54301 | 920-432-4865 | www.berniers-schob.com

REVISION	DATE:
50% OWNER REVIEW SET	APRIL 04, 2017
FINAL REVIEW OWNER SET	APRIL 13, 2017
BID SET	APRIL 27, 2017

BASEMENT - ELECTRICAL PLAN

**E2**  
COMMISSION  
5700.02

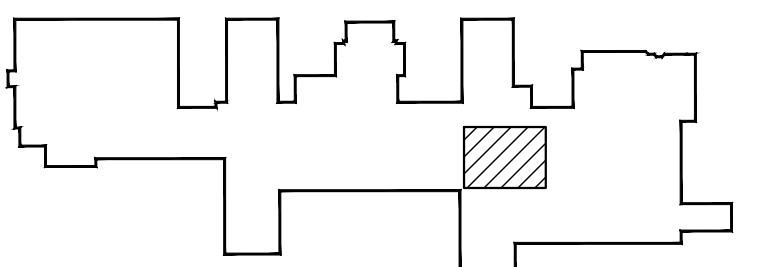
©2017, BERNERS-SCHOB ASSOCIATES, INC.  
THE COPYRIGHT OWNER GRANTS THE PLANNER A LIMITED LICENSE TO  
USE THIS DRAWING FOR THE EXPRESS PURPOSE OF CONSTRUCTING THE  
PROJECT DEPICTED THEREON. ANY OTHER USE IS STRICTLY PROHIBITED.  
THIS DRAWING IS NOT TO BE COPIED IN ANY FORM OR UPLOADED TO  
WEBSITES EXCEPT AS AUTHORIZED BY BERNERS-SCHOB ASSOCIATES, INC.



**FIRST FLOOR - ELECTRICAL PLAN**  
SCALE: 1/8"=1'-0"

#### PLAN KEYED NOTES (THIS SHEET ONLY)

- REPLACE THE EXISTING INTERIOR, BREAKERS AND DOORS OF THE EXISTING PANEL. REFERENCE THE PANEL SCHEDULE. DISCONNECT AND REMOVE THE EXISTING SPLICES AND ABANDONED CONDUCTORS TO PANELS WHICH HAVE BEEN REMOVED. THE EXISTING CONDUITS ARE TO REMAIN MARK THEM AS SPARE AT BOTH ENDS.
- THE TYPICAL WORK HOURS REQUIRED FOR THIS WORK WILL BE FROM 4:30PM TO 7:00AM DAILY.



**KEY PLAN**  
NO SCALE

#### BID DOCUMENT SET

#### CORRECT ELECTRICAL DEFICIENCIES PROJECT # 585-16-101

325 H STREET | IRON MOUNTAIN, MI | 49801

**BERNERS-SCHOB**

310 Pine Street | Green Bay, WI 54301 | 920-432-4865 | www.berniers-schober.com

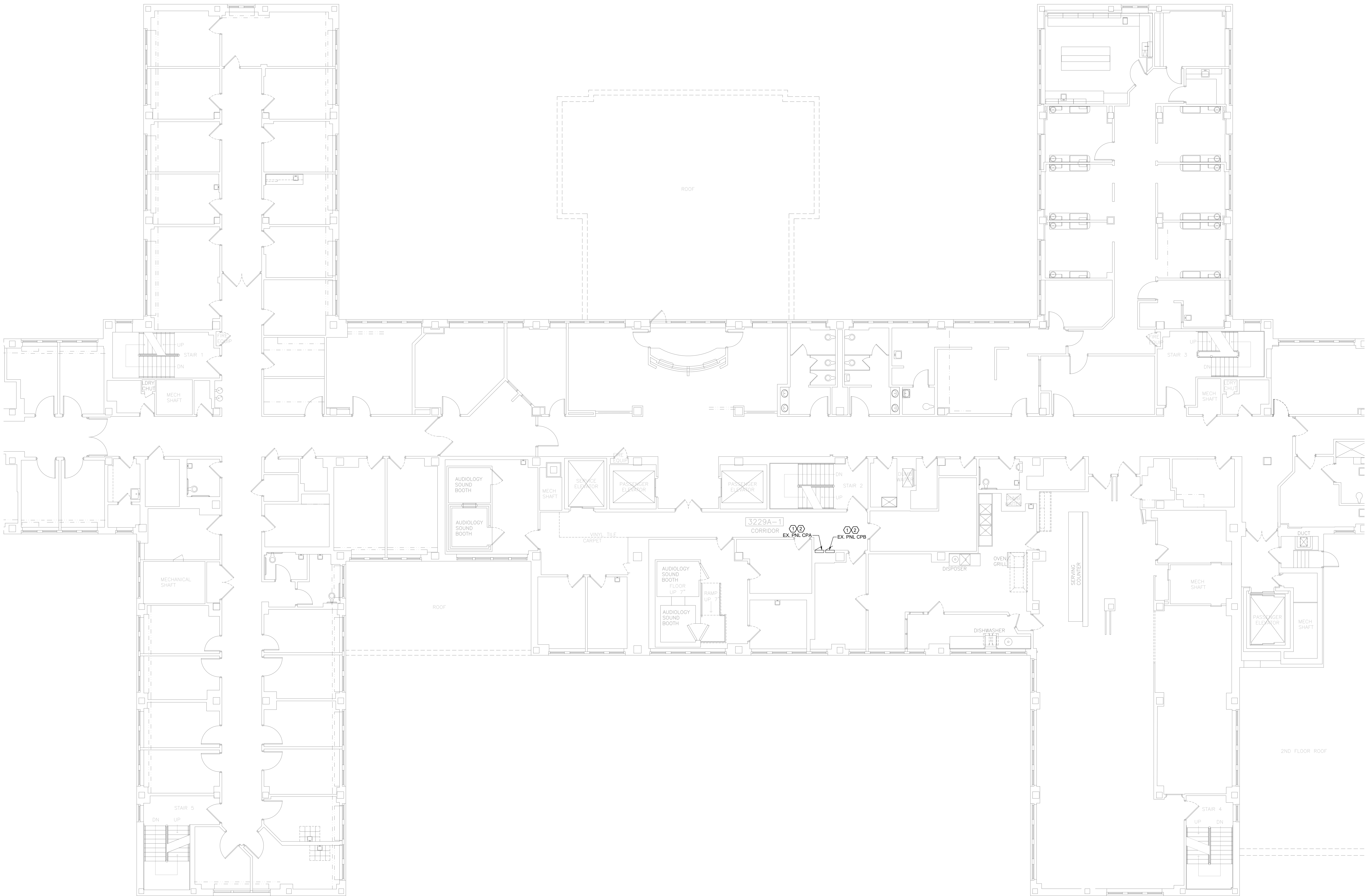
REVISION	DATE:
50% OWNER REVIEW SET	APRIL 04, 2017
FINAL REVIEW OWNER SET	APRIL 13, 2017
BID SET	APRIL 27, 2017

#### FIRST FLOOR - ELECTRICAL PLAN

**E3**  
DATE: COMMISSION  
5700.02

©2017, BERNERS-SCHOB ASSOCIATES, INC. THE COPYRIGHT OWNER GRANTS THE PLANNING A LIMITED LICENSE TO USE THIS DRAWING FOR THE EXPRESS PURPOSE OF CONSTRUCTING THE PROJECT DEPICTED THEREON. ANY OTHER USE IS STRICTLY PROHIBITED. THIS DRAWING IS NOT TO BE COPIED IN ANY FORM OR UPLOADED TO WEBSITES EXCEPT AS AUTHORIZED BY BERNERS-SCHOB ASSOCIATES, INC.

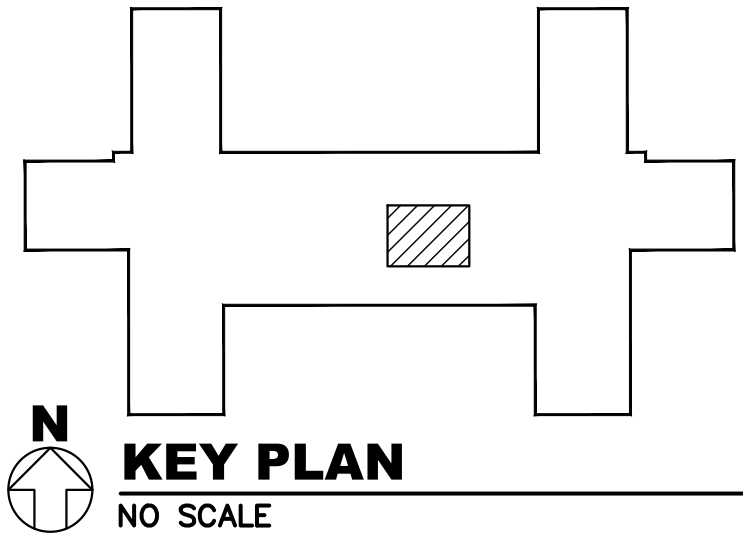




**THIRD FLOOR - ELECTRICAL PLAN**  
SCALE: 1/8"=1'-0"

**PLAN KEYED NOTES**  
(THIS SHEET ONLY)

- ① REPLACE THE INTERIOR, BREAKERS AND DOOR OF THE EXISTING PANEL. REFERENCE THE PANEL SCHEDULE. UTILIZE EXISTING CONDUITS AND CONDUCTORS.
- ② THE TYPICAL WORK HOURS REQUIRED FOR THIS WORK WILL BE FROM 4:30PM TO 7:00AM DAILY.



**BID DOCUMENT SET**

**CORRECT ELECTRICAL DEFICIENCIES**  
**PROJECT # 585-16-101**

325 H STREET | IRON MOUNTAIN, MI | 49801

**BERNERS-SCHOBER**

310 Pine Street | Green Bay, WI 54301 | 920-432-4865 | www.berniers-schober.com

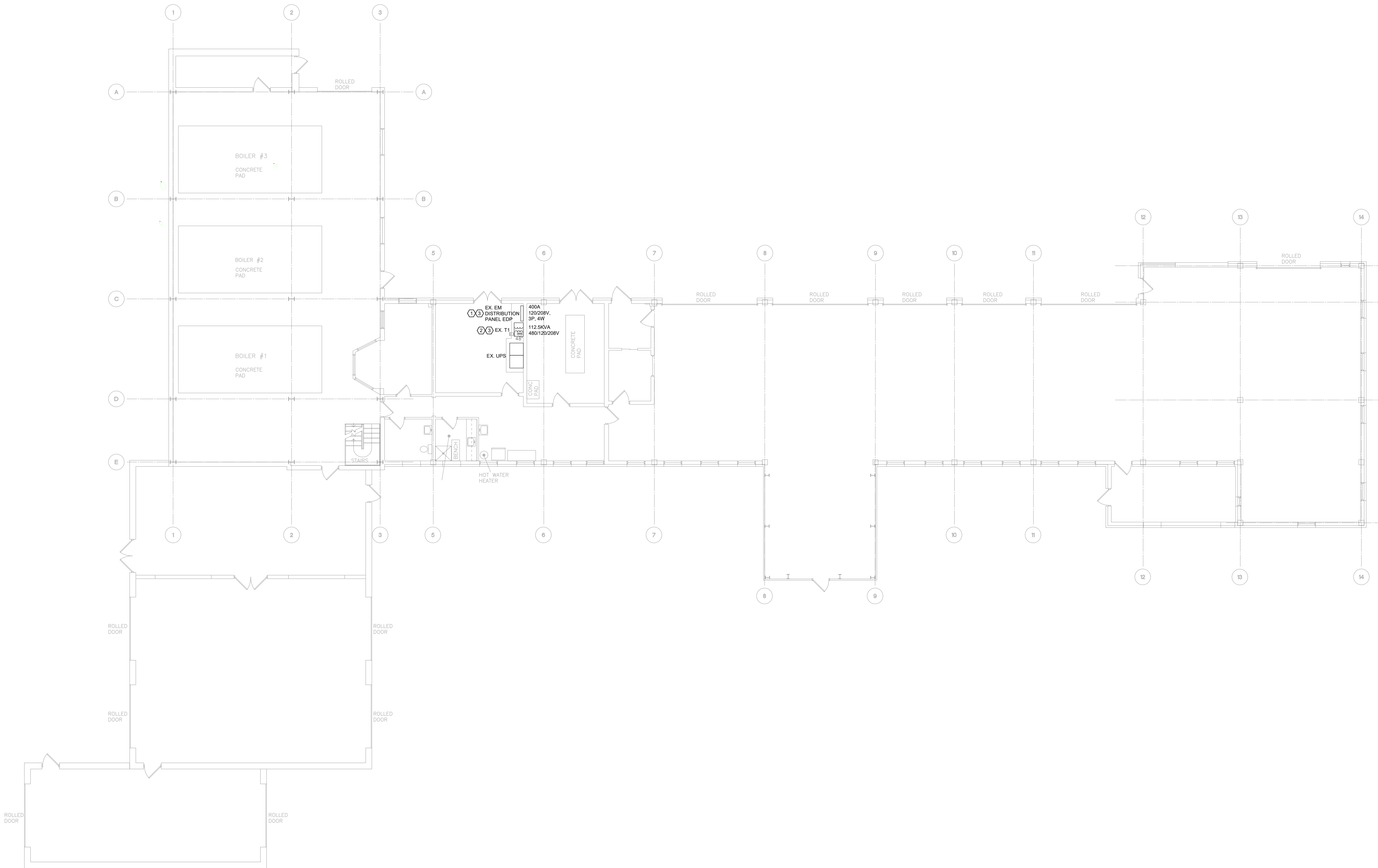
REVISION	DATE:
50% OWNER REVIEW SET	APRIL 04, 2017
FINAL REVIEW OWNER SET	APRIL 13, 2017
BID SET	APRIL 27, 2017

**THIRD FLOOR - ELECTRICAL PLAN**

**E4**  
DATE: COMMISSION  
**5700.02**

©2017, BERNERS-SCHOBER ASSOCIATES, INC. THE COPYRIGHT OWNER GRANTS THE PLANHOLDER A LIMITED LICENSE TO USE THIS DRAWING FOR THE EXPRESS PURPOSE OF CONSTRUCTING THE PROJECT DEPICTED THEREON. ANY OTHER USE IS STRICTLY PROHIBITED. THIS DRAWING IS NOT TO BE COPIED IN ANY FORM OR UPLOADED TO WEBSITES EXCEPT AS AUTHORIZED BY BERNERS-SCHOBER ASSOCIATES, INC.

042717 18 570002E4WF03 rslatford



PLAN KEYED NOTES

(THIS SHEET ONLY)

- 1 REPLACE THE EXISTING DISTRIBUTION PANEL. REFERENCE THE PANEL SCHEDULE.
- 2 REPLACE THE EXISTING 112 KVA TRANSFORMER. REFERENCE THE TRANSFORMER SCHEDULE.
- 3 PROVIDE TEMPORARY GENERATOR, FUEL, DISTRIBUTION PANEL WITH BREAKERS AND ALL CABLING AND CONNECTIONS REQUIRED TO TEMPORARILY BACK FEED ALL EXISTING LOADS SERVED FROM PANEL "EDP" WHICH IS BEING REPLACED. COORDINATE SWITCH OVER WITH OWNER. TURN TEMPORARY PANEL OVER TO OWNER ONCE NEW EQUIPMENT IS INSTALLED AND ENERGIZED.

BID DOCUMENT SET

CORRECT ELECTRICAL DEFICIENCIES  
PROJECT # 585-16-101

325 H STREET | IRON MOUNTAIN, MI | 49801

BERNERS  
SCHOB

310 Pine Street | Green Bay, WI 54301 | 920-432-4865 | www.berniers-schob.com

REVISION	DATE:
50% OWNER REVIEW SET	APRIL 04, 2017
FINAL REVIEW OWNER SET	APRIL 13, 2017
BID SET	APRIL 27, 2017

BUILDING #2 - ELECTRICAL PLAN

E5

DATE:  
COMMISSION  
5700.02

©2017, BERNERS-SCHOB ASSOCIATES, INC.  
THE COPYRIGHT OWNER GRANTS THE PLANHOLDER A LIMITED LICENSE TO USE THIS DRAWING FOR THE EXPRESS PURPOSE OF CONSTRUCTING THE PROJECT DEPICTED THEREON. ANY OTHER USE IS STRICTLY PROHIBITED. THIS DRAWING IS NOT TO BE COPIED IN ANY FORM OR UPLOADED TO WEBSITES EXCEPT AS AUTHORIZED BY BERNERS-SCHOB ASSOCIATES, INC.

042717 18 570002E5WFOB rstafford



[illegible]

Panel EB Corridor B299B										Panel EB Corridor B299B											
Updated: 10Sep13    Feed From: N MDP										Updated: 10Sep13    Feed From: N MDP											
PANEL:			EB	PANEL TYPE:			Square D		PANEL:			EB	PANEL TYPE:			Square D					
Voltage:	120/208	Phase:	3	AMPS:	225	WIRE:	4	POLE:	42	Voltage:	120/208	Phase:	3	AMPS:	225	WIRE:	4	POLE:	42		
CKT#	DESCRIPTION								CB	POLE	CKT#	DESCRIPTION								CB	POLE
1	Unknown								20A	1P	2	Receptacle B299C, Receptacle B276								30A	1P
3	Receptacle B231								20A	1P	4	Receptacle B298B, Receptacle B298								20A	1P
5	SPARE								20A	1P	6	Hydration Station								20A	1P
7	Laundry Chute Switch B230								20A	1P	8	Receptacle B299B								20A	1P
9	SPARE								20A	1P	10	Lights B231								20A	1P
11	SPARE								20A	1P	12	Lights B231 and Recepts								20A	1P
13	Receptacle B298, Stairwell #4 Landing Outside Light								20A	1P	14	Lights B231A, Lights B231B, Receptacle B231B								20A	1P
15	Lights B226, Lights B231, B230								20A	1P	16	SPARE								20A	1P
17	Receptacle Loading Dock, Lights Loading Dock, Lights B298B, Outside Lights B298B								20A	1P	18	SPARE								20A	1P
19	SPARE								20A	1P	20	SPARE								20A	1P
21	SPARE								20A	1P	22	Quad Receptacle B231, Receptacle B231								20A	1P
23	Lights B299B & B299C								20A	1P	24	Receptacle B298B, receptacle B298								20A	1P
25	Lights B226, B226B, B226C								20A	1P	26	SPARE								20A	1P
27	Lights B298								20A	1P	28	Receptacle B223, Receptacle B223B								20A	1P
29	Lights B226A								20A	1P	30	SPARE								20A	1P
31	SPARE								20A	1P	32	SPARE								20A	1P
33	Lamp holder B298, Receptacle B276, Lights B299B, B299C, B299D, & Stairwell 3								20A	1P	34	SPARE								20A	1P
35	SPARE								20A	1P	36	SPARE								20A	1P
37	SPARE								20A	1P	38	Receptacle B298A& Lights. Receptacle B298								20A	1P
39	Security Panel Room B 291A								20A	1P	40	Receptacle B291A								20A	1P
41	Receptacles and Lights B291								20A	1P	42	Receptacle B291, Receptacle B291A								20A	1P

Panel: E1S Outside 1266										Panel: E1S Outside 1266									
UPDATED: 25FEB14										UPDATED: 14 April 2017									
PANEL:		FED FROM: N MDP		PANEL TYPE:		Square D				PANEL:		FED FROM: N MDP		PANEL TYPE:		Square D			
Voltage:	120/208	Phase:	3	AMPS:	225A	WIRE:	4	POLE:	42	Voltage:	120/208	Phase:	3	AMPS:	225A	WIRE:	4	POLE:	42
CKT#	DESCRIPTION							CB	POLE	CKT#	DESCRIPTION							CB	POLE
1	Spare							20A	1P	2	Pneumatic Messenger 1294							20A	1P
3	Receptacle 1214, Nurse Call Corridor 1299C							20A	1P	4	Lights 1288, fan rec 1288A, Lights & ceiling recp 1288A							20A	1P
5	Spare							20A	1P	6	Spare							20A	1P
7	Spare							20A	1P	8	Spare							20A	1P
9	Exhaust Fan #35							20A	1P	10	Spare							20A	1P
11	Spare							20A	1P	12	Spare							20A	1P
13	Fan Receptacle 1262, Lights 1267 & 1294							20A	1P	14	Spare							20A	1P
15	Spare							20A	1P	16	Spare							20A	1P
17	Receptacle 1269 & 1267							20A	1P	18	Spare							20A	1P
19	Spare							20A	1P	20	Spare							20A	1P
21	Kitchen Outdoor rooftop receptacle(E.side)							20A	1P	22	Spare							20A	1P
23	Receptacle 1267							20A	1P	24	Spare							20A	1P
25	Spare							20A	1P	26	Spare							20A	1P
27	Receptacle 1267, 1294							20A	1P	28	Spare							20A	1P
29	Spare							20A	1P	30	Spare							20A	1P
31	Spare							20A	2P	32	Spare							20A	1P
33	Spare							20A	2P	34	1284 A.C. Receptacle							20A	1P
35	Receptacle 1294							20A	1P	36	1284 Prayer Lights, Temptrack Repeater							20A	1P
37	Spare							20A	1P	38	Spare to 1288							20A	1P
39	Spare							20A	1P	40	Receptacle 1288, Receptacle 1288A							20A	1P
41	Spare							20A	1P	42	Receptacle 1288A							20A	1P

Panel DPEQ1 Sub-Baseament										Panel DPEQ1 Sub-Baseament											
UPDATED: 06/08/13					Panel fed from NH-DSWBD					UPDATED: 06/08/13					Panel fed from NH-DSWBD						
PANEL:		DEPQ1		PANEL TYPE: Square D						PANEL:		DEPQ1		PANEL TYPE: Square D							
Voltage:	120/208	Phase:	3	AMPS:	400	WIRE:	4	POLE:	42	Voltage:	120/208	Phase:	3	AMPS:	400	WIRE:	4	POLE:	42		
CKT#	DESCRIPTION								CB	POLE	CKT#	DESCRIPTION								CB	POLE
1	CH-8 (Surgery Chiller)								150A	3P	2	SPARE								15A	3P
3	X								X	X	4	X								X	X
5	X								X	X	6	X								X	X
7	X								X	X	8	SPARE								15A	3P
9	X								X	X	10	X								X	X
11	X								X	X	12	X								X	X
13	SPARE								30A	3P	14	LIQUIDTECH WATER TREATMENT								20A	1P
15	X								X	X	16	BLD 1 GE/MDS WATER FLOW METERS								15A	1P
17	X								X	X	18										
19											20										
21											22										
23											24	TEMPORARY FEED TO SUMP PUMP (PANEL EQ)								30A	3P
25											26	X								X	X
27											28	X								X	X
29											30										
	SPARE								200A	3P											
	X								X	X											
	X								X	X											

Panel EQ										Panel EQ									
UPDATED: 06/08/13										UPDATED: 06/08/13									
PANEL:		S DIST	PANEL TYPE:		GE					PANEL:		S DIST	PANEL TYPE:		GE				
Voltage:	120/208	Phase:	3	AMPS:	400	WIRE:	4	POLE:	36	Voltage:	120/208	Phase:	3	AMPS:	400	WIRE:	4	POLE:	36
CKT#	DESCRIPTION							CB	POLE	CKT#	DESCRIPTION							CB	POLE
1	P-2 West Elevator							200A	3P	2	SPARE							225A	3P
3	X							X	X	4	X							X	X
5	X							X	X	6	X							X	X
5	X							X	X	8	X							X	X
5	X							X	X	10	X							X	X
5	X							X	X	12	X							X	X
13	PANEL EQ-2A							100A	3P	14	PANEL EQ1							125A	3P
15	X							X	X	16	X							X	X
17	X							X	X	18	X							X	X
19	Panel REF							100A	3P	20	Spare							50A	3P
21	X							X	X	22	X							X	X
23	X							X	X	22	X							X	X
25	Sump Pumps Motor 1 & 2							30A	3P	26	PANEL EMEQ-B1							70A	3P
27	X							X	X	28	X							X	X
29	X							X	X	28	X							X	X
31	old med vac feed to RM 2180							90A	3P	32	PANEL EQ-A							30A	3P
33	X							X	X	34	X							X	X
35	X							X	X	34	X							X	X
37	AIR DRYER							20A	1P	38	SUMP PIT ALARM AND RO ALARM							20A	1P
39	SPARE							15A	1P	40	SUMP PUMP CONTROL POWER							20A	1P
41										42									

SBA											SBA										
UPDATED 08/16/16											UPDATED: 08/16/16										
PANEL:			N DIST		PANEL TYPE:		G.E.				PANEL:			N DIST		PANEL TYPE:		G.E.			
Voltage:	120/208	Phase:	3	AMPS:	800	WIRE:	4	POLE:	36	Voltage:	120/208	Phase:	3	AMPS:	800	WIRE:	4	POLE:	36		
CKT#	DESCRIPTION								CB	POLE	CKT#	DESCRIPTION								CB	POLE
1	SPARE								225A	3P	2	SPARE								200A	3P
3	X								X	X	4	X								X	X
5	X								X	X	6	X								X	X
7	X								X	X	8	X								X	X
9	X								X	X	10	X								X	X
11	X								X	X	12	X								X	X
13	UPS AC								40A	3P	14	SPARE IN J-BOX								100A	3P
15	X								X	X	16	X								X	X
17	X								X	X	18	X								X	X
19	SPARE								225A	3P	20	SPARE RM 2206								200A	3P
21	X								X	X	22	X								X	X
23	X								X	X	24	X								X	X
25	Panel CPA								225A	3P	26	Panel KPA-B								225A	3P
27	X								X	X	28	X								X	X
29	X								X	X	30	X								X	X
31	PANEL CPB								225	3P	32	KL								225	3P
33	X								X	X	34	X								X	X
35	X								X	X	36	X								X	X

## BID DOCUMENT SET

**CORRECT ELECTRICAL  
DEFICIENCIES  
PROJECT # 585-16-101**

325 H STREET | IRON MOUNTAIN, MI | 49801



310 Pine Street | Green Bay, WI 54301 | 920-432-4865 | [www.berners-schober.com](http://www.berners-schober.com)

REVISION	DATE:
50% OWNER REVIEW SET	APRIL 04, 2017
FINAL REVIEW OWNER SET	APRIL 13, 2017
BID SET	APRIL 27, 2017

## PANEL WORKSHEETS

# E6

DATE: \_\_\_\_\_  
COMMISSION  
**5700.02**

© 2017, BERNERS-SCHOBER ASSOCIATES, INC.  
THE COPYRIGHT OWNER GRANTS THE PLANHOLDER A LIMITED LICENSE TO USE THIS DRAWING FOR THE EXPRESS PURPOSE OF CONSTRUCTING THE PROJECT DEPICTED THEREON. ANY OTHER USE IS STRICTLY PROHIBITED. THIS DRAWING IS NOT TO BE COPIED IN ANY FORM OR UPLOADED TO WEBSITES EXCEPT AS AUTHORIZED BY BERNERS-SCHOBER ASSOCIATES, INC.

Panel EDP Building #2										Panel EDP Building #2											
UPDATED: 04/27/17      Panel fed from ATS-2										UPDATED: 04/27/17      Panel fed from ATS-2											
PANEL:		EDP		PANEL TYPE:		Square D				PANEL:		EDP		PANEL TYPE:		Square D					
Voltage:	120/208	Phase:	3	AMPS:	400	WIRE:	4	POLE:	I-LINE	Voltage:	120/208	Phase:	3	AMPS:	400	WIRE:	4	POLE:	I-LINE		
CKT#	DESCRIPTION								CB	POLE	CKT#	DESCRIPTION								CB	POLE
1	PANEL LP-2A (GARAGE)								150A	3P	2	PANEL IN SWITCH BOARD RM.								200A	3P
3	X								X	X	4	X								X	X
5	X								X	X	6	X								X	X
7	PANEL A (BOILER RM.)								100A	3P	8	PANEL C (BOILER RM.)								100A	3P
9	X								X	X	10	X								X	X
11	X								X	X	12	X								X	X
13	PANEL LP-4 (UPPER LEVEL BOILER RM.)								70A	3P	14	WELDING OUTLETS								50A	3P
15	X								X	X	16	X								X	X
17	X								X	X	18	X								X	X
19	15 KVA UPS								90A	3P	20	INCINERATOR PANEL								100A	3P
21	X								X	X	22	X								X	X
23	X								X	X	24	X								X	X
25											26										
27											28										
29											30										

BID DOCUMENT SET

CORRECT ELECTRICAL DEFICIENCIES  
PROJECT # 585-16-101

325 H STREET | IRON MOUNTAIN, MI | 49801

BERNERS

SCHOBER

310 Pine Street | Green Bay, WI 54301 | 920-432-4865 | www.berniers-schober.com

REVISION

DATE:

50% OWNER REVIEW SET

APRIL 04, 2017

FINAL REVIEW OWNER SET

APRIL 13, 2017

BID SET

APRIL 27, 2017

PANEL WORKSHEET

E7

DATE:  
COMMISSION

5700.02