



FEATURES & SPECIFICATIONS

INTENDED USE — Intended for low to medium mounting heights where dust, dirt, humidity, moisture, or corrosive elements are present. Ideal for canopies, dock areas, wastewater treatment, refrigerated areas, food processing and other non-hazardous environments. Certain airborne contaminants can diminish integrity of acrylic. [Click here for Acrylic Environmental Compatibility table for suitable uses.](#)

CONSTRUCTION — Housing formed from impact resistant, UV stabilized, fiberglass reinforced polyester with cold-rolled steel enclosed wireway. Poured in gasketing provides a seal between housing and diffuser. Captive, corrosion-resistant cam-action latches secure the diffuser; six on 4' units, and ten on 8' units. Stainless steel latches available.

Finish: Painted parts pretreated with a five-stage iron-phosphate process to ensure superior paint adhesion and corrosion resistance, then finished with a high-gloss, baked white enamel.

OPTICS — High-impact Acrylic diffuser with a stippled interior surface to spread lamp image.

PLEASE NOTE: The standard 4' diffuser is 2-1/4" deep, and the standard 8' diffuser is 3" deep. To order the 4' diffuser so that it matches the depth of the 8' diffuser, order the ARDP option. The 8' diffuser is not available in the 2-1/4" depth.

ELECTRICAL — Thermally protected, resetting, Class P, HPF, non-PCB, UL Listed and CSA Certified ballast is standard.

AWM, TFM, THHN wire throughout, rated for required temperatures.

INSTALLATION — For unit or row installations, surface (ceiling or wall) or suspended mounting. Wall mounting; horizontal orientation only for use in damp locations.

LISTINGS — 120V, 277V and MVOLT are UL Listed and CSA Certified (standard). 347V is CSA Certified (see Options). NOM Certified (see Options). Listed for 25°C ambient and wet locations for covered-ceiling applications. IP65 rated. Optional IP67 rating available for 4' units only. Compliance to FDA/USDA requirements and/or NSF splash-zone certification.

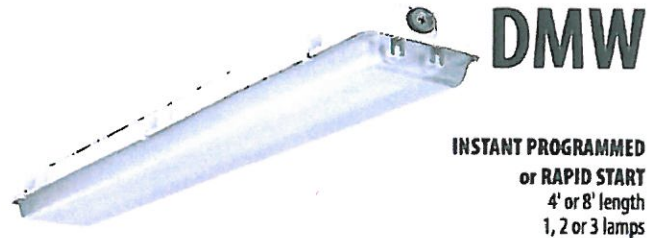
WARRANTY — 1-year limited warranty. Complete warranty terms located at www.aquitybrands.com/CustomerResources/Terms_and_conditions.aspx

Actual performance may differ as a result of end-user environment and application.

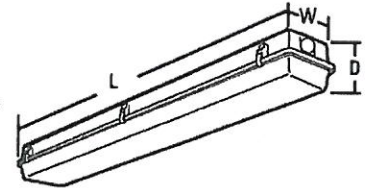
Note: Specifications subject to change without notice.

Catalog Number
Notes
Type

Enclosed and Gasketed Industrial



Specifications	
Length:	50 (127.0) 98 (248.9)
Width:	8-1/8 (20.6)
Fixture depth:	5-5/8 (14.3) (deep lens) 4-3/4 (12.1) standard lens



All dimensions are shown in inches (centimeters) unless otherwise noted.

ORDERING INFORMATION

For shortest lead times, configure products using **standard options (shown in bold)**.

Example: DMW 2 32 MVOLT GEB10IS

DMW							
Series	Number of lamps	Lamp type	Diffuser	Voltage	Ballast	Options	
DMW	1	28T5 28W T5 (48") ¹	(blank)	120	GEB10IS	Electronic ballast, ≤10% THD, instant start ¹	ELDW Emergency battery pack (nominal 300 lumens) ³
Wet location	2	32 32W T8 (48")	ARDP	277			ELSDW Emergency battery pack (nominal 500 lumens) ³
For tandem double-length unit, add prefix T. Example: TDMW	3'	54T5H0 54W T5H0 (48") ³		347	GEB10RS	Electronic ballast, ≤10% THD, rapid start	EL6DW Emergency battery pack (nominal 600 lumens) ³
	Not included.			MVOLT others available	GEB10PS	T5 electronic ballasts, ≤10% THD, programmed rapid start	EL14DW Emergency battery pack (nominal 1400 lumens) ³
					GEB10PS90	T5H0 90° case temperature ballast	GLR Internal fast-blow fusing ⁴
							GMF Internal slow-blow fusing ⁴
							RIF1 Radio interference filter, one per fixture
							STSL Stainless steel latches
							WLF Wet location fittings (one pair; installed, top)
							IP67 IP67 rated; requires 8 latches for 4' fixtures and 14 latches for 8' fixtures
							CSA CSA certified (only required for 347V)
							NOM NOM certified
							CS88 6' Brad Harrison 16/3 cord and straight blade plug set ⁵
							MSI_ Wet location occupancy sensor pre-wired ^{4,7}

Accessories: Order as separate catalog number.

BCD	Bracket for hanger chain mounting. Two per package. ⁸
HC36	Chain hangers (1 pair, 36" long); Requires BCD.
WLF	Wet location fittings (1 pair, not installed)

Notes

- 32W T8 lamps only.
- Must specify GEB10PS ballast.
- Must specify GEB10PS90 ballast.
- Deep lens required to match 8' fixtures.
- Must specify voltage; 120 or 277V only.
- Must specify voltage. Not available with MVOLT.
- For mounting up to 8' specify MSI8; for mounting up to 20' specify MSI20.
- For stainless steel, specify STS (ex: BCD STS).

DMW Instant, Programmed and Rapid Start

MOUNTING DATA

For unit or row installation, surface (ceiling or wall) or suspended mounting.

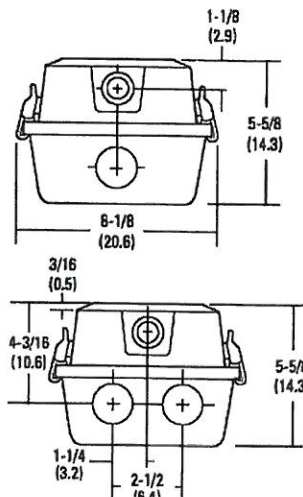
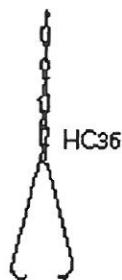
DMW — Drill holes through housing and channel at appropriate locations. Includes gasketed wet location fittings on ends for power feeding/mounting. Fitting is threaded for 1/2" rigid conduit (optional WLF for top mounting). Attach to surface using fasteners and sealing washers (by others) appropriate to ceiling materials.

Unit installation — Minimum of two hangers required.

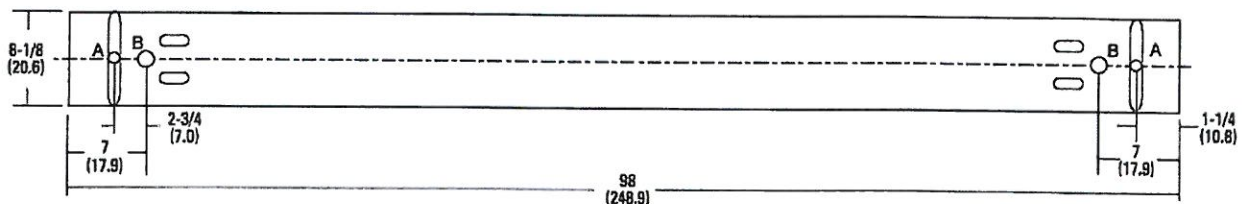
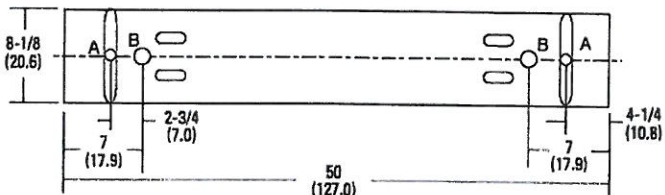
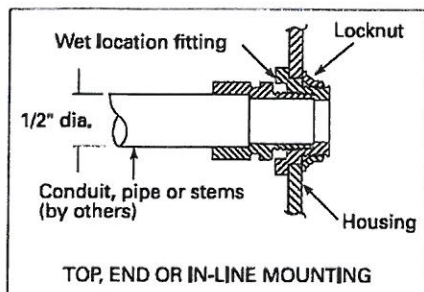
Row installation — Minimum of two hangers required. Recommended 1/2" nipple with union (by others) for DMW.

DIMENSIONS

Inches (centimeters). Subject to change without notice.



A = 11/16 (17) Dia.
B = 1-1/8 (29) Dia.
Recommended mounting locations
(field drilling required)



PHOTOMETRICS

Calculated using the zonal cavity method in accordance with IESNA LM41 procedure. Floor reflectances are 20%. Lamp configurations shown are typical. Full photometric data on these and other configurations available upon request.

TEST NO: LTL17549

LUMINAIRE CATALOG NO.: DMW 2 32 MVOLT
LUMENS PER LAMP: 2800

TEST NO: LTL17462

LUMINAIRE CATALOG NO.: DMW 2 54T5HO MVOLT ACN690
LUMENS PER LAMP: 4500

pc	Coefficients of Utilization											
	20%				50%				80%			
	50%	30%	10%	50%	30%	10%	50%	30%	10%	50%	30%	10%
0	84	84	84	82	82	82	77	77	77	71	71	71
1	71	67	64	69	65	62	65	62	60	60	55	50
2	60	55	50	59	54	49	56	51	47	52	46	40
3	52	46	40	51	45	40	48	43	39	46	39	34
4	46	39	34	45	38	33	42	37	32	41	34	29
5	41	34	29	40	33	28	38	32	28	36	29	25
6	36	29	25	35	29	24	34	28	24	33	26	21
7	33	26	21	32	26	21	31	25	21	30	23	19
8	30	23	19	29	23	19	28	22	19	27	21	17
9	27	21	17	27	21	17	26	20	17	25	19	15
10	25	19	15	25	19	15	24	18	15	24	18	15

Zonal Lumen Summary			
Zone	Lumens	% Lamp	% Fixture
0° - 30°	807.5	14.4	20.2
0° - 40°	1366.3	24.4	34.3
0° - 60°	2591.8	46.3	63.0
0° - 90°	3822.1	68.3	95.9
90° - 180°	1654.4	3.0	4.1
0° - 180°	3987.5	71.2	100.0

pc	Coefficients of Utilization											
	20%				50%				80%			
	50%	30%	10%	50%	30%	10%	50%	30%	10%	50%	30%	10%
0	87	87	87	84	84	84	79	79	79	73	73	73
1	73	69	65	70	67	63	66	63	60	62	56	51
2	62	56	51	60	55	50	56	52	48	54	47	42
3	54	47	42	52	46	41	49	43	39	47	40	35
4	47	40	35	46	39	34	43	37	33	42	35	29
5	42	35	29	41	34	29	38	32	28	38	31	25
6	38	31	25	37	30	25	34	29	24	34	27	22
7	34	27	22	33	27	22	31	25	21	31	24	20
8	31	24	20	30	24	19	28	22	19	28	22	18
9	28	22	18	28	21	17	26	21	17	26	20	16
10	26	20	16	25	20	16	24	19	15	25	20	16

Zonal Lumen Summary			
Zone	Lumens	% Lamp	% Fixture
0° - 30°	1285.8	14.3	19.1
0° - 40°	2169.6	24.1	32.2
0° - 60°	4044.8	44.9	60.1
0° - 90°	6083.7	67.6	80.4
90° - 180°	646.5	7.2	9.6
0° - 180°	6730.2	74.8	100.0



An Acuity Brands Company

DMW-RS

INDUSTRIAL:

One Lithonia Way Conyers, GA 30012

Phone: 800-315-4863

Fax: 770-981-8191

www.lithonia.com

© 2011-2012 Acuity Brands Lighting, Inc. All rights reserved. Rev. 03/05/12