

A

B

C

D

E

F

three eighths inch = one foot
one and one half inches = one foot
one inch = one foot
three quarters inch = one foot
one half inch = one foot
three eighths inch = one foot
one quarter inch = one foot
one eighth inch = one foot

A

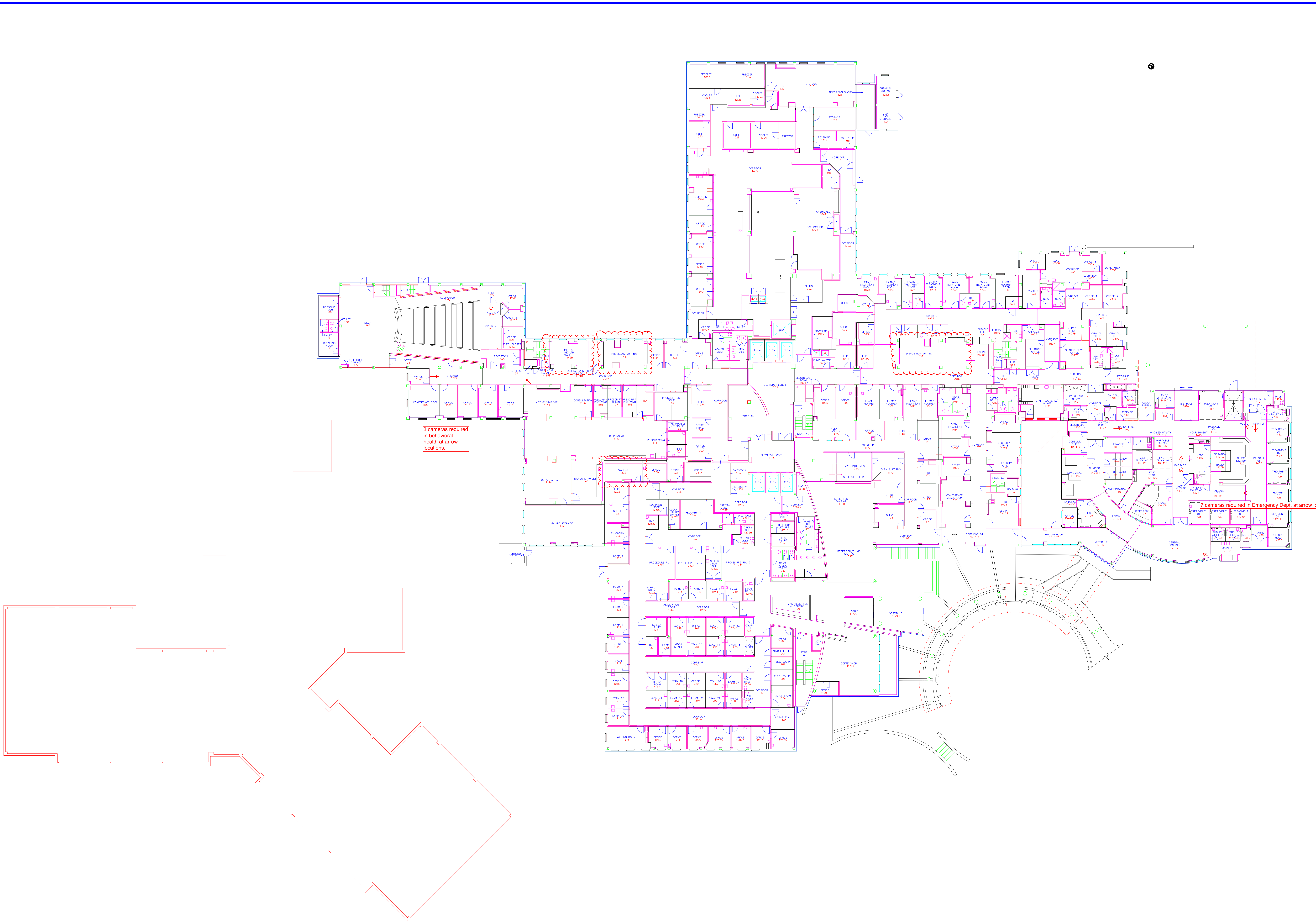
B


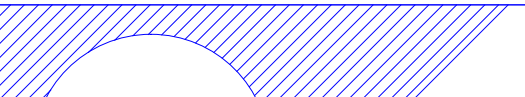
C

D

E

F



				<div><div></div><div>Indus Systems, Inc. 2352, Main Street, Concord MA 01742 Tel: 978-461-0555 www.indus-systems.com</div></div>		<div>Drawing Title</div> <div>FIRST FLOOR PLAN ARCHITECTURAL</div>		<div>Project Title</div> <div>AS-BUILT Drawings</div>		<div>Date</div> <div>08-19-2013</div>		<div></div>			
						<div>Project No.</div>									
<div>Revisions</div>		<div>Date</div>		<div>Professional Seal</div>		<div>Drawing No.</div> <div>460-1-1-AR</div>									
						<div>Site:</div>		<div>Building Number</div> <div>01</div>		<div>Checked</div>		<div>Drawn</div>			
						<div>Approved:</div>		<div>Location</div> <div>VAMC WILMINGTON DELAWARE</div>							