

A

B

C

D

E

F

A

B

C

D

E

F

three eighths = one foot

one and one half inches = one foot

one inch = one foot

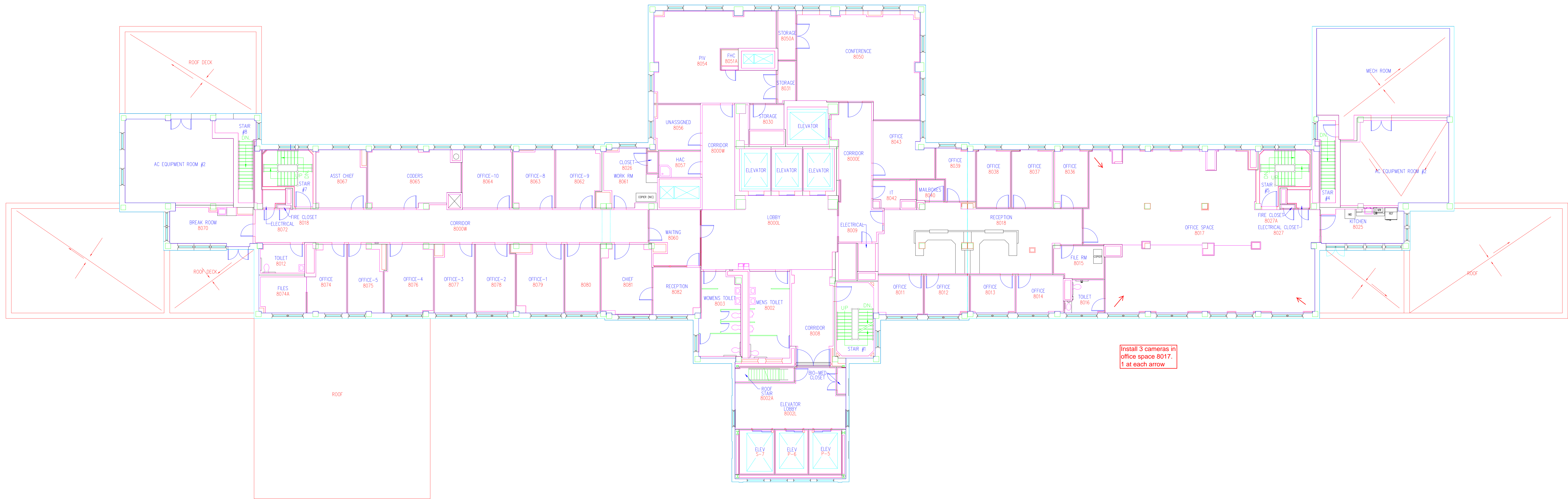
three quarters inch = one foot

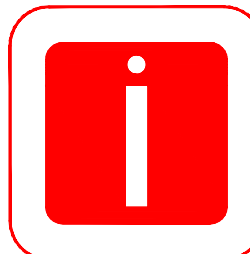
one half inch = one foot

three eighths inch = one foot

one quarter inch = one foot

one eighth inch = one foot



Revisions	Date		Professional Seal	<div><div></div><div>Indus Systems, Inc. 2352, Main Street, Concord MA 01742 Tel: 978-461-0555 www.indus-systems.com</div></div>	Drawing Title EIGHTH FLOOR PLAN ARCHITECTURAL		Project Title AS-BUILT Drawings		Date 05-09-2017	<div>VAMC, WILMINGTON</div>	Department of Veterans Affairs
					Site:		Building Number 01	Checked	Drawn		
					Approved:		Location VAMC WILMINGTON DELAWARE	Drawing No. 460-1-8-AR			