

MODEL MPCW-7

Size: 11" x 9.5" x 4.125" (.28 x .24 x .10 m)

Approximate weight: 3,35 lbs. (1.5 kg)

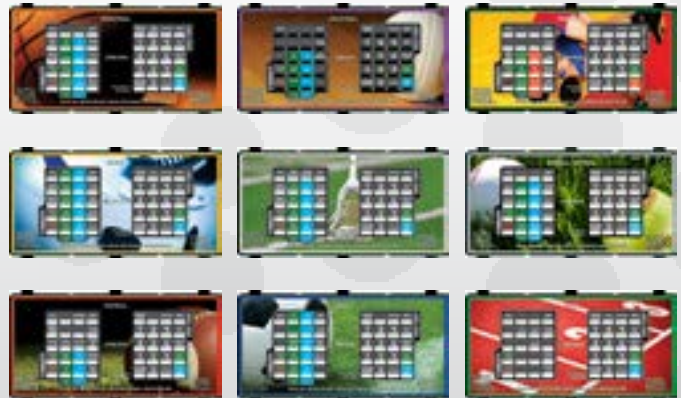
Display: Bright LED **Keypad:** Split and raised 40 key keyboard



Advanced universal wireless control featuring:

- One control can be used for up to 40 wireless scoreboards
- High Impact Black Plastic.
- Improved UV resistance.
- Sealed Keypad prevents liquids being spilled into the control.
- Durable rubber replaces the plastic push buttons.
- Backward compatible with most older scoreboards.
- Custom designed overlay featuring sport specific graphics.
- ETN entry can be done on any overlay through the option menu. (Many competitors require a separate PC for ETN entry)
- Rechargeable Battery option.
- Handheld switches included as required.
- Internal Antenna.
- High Brightness, illuminated LED display.

Easy to Read, sport specific Overlays



Advanced Software features:

New Game, Horn Tone / Volume, Time Out time, Time of Day, Segment Timer & more.

Combine your scoreboard with a Nevco monochrome or full-color message center to create a complete scoring and display system. Team/Sponsor signs also available.



MAXIMIZE YOUR IMPACT®

BUILD YOUR OWN DISPLAY AND SCORING SYSTEM ONLINE AT:

WWW.NEVCO.COM

U.S. & CANADA: 800-851-4040 INTERNATIONAL: 618-664-0360

FAX: 618-664-0398 E-MAIL: INFO@NEVCO.COM

INTEGRATED DISPLAY AND SCORING SOLUTIONS

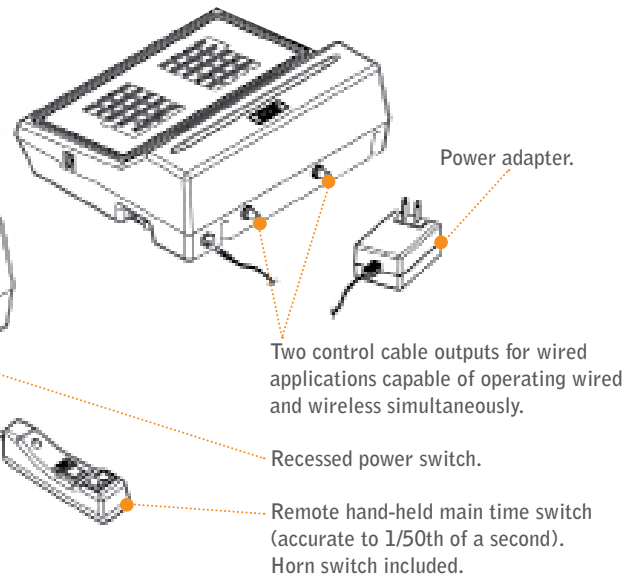
Model MPCW-7 Operating Features

Alphanumeric LED display.

Operator keyboards.

Optional hand-held remote switch (will operate from either receptacle). Required for specific accessories.

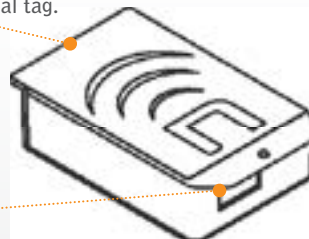
Changeable sport-specific overlay.



MPCW Receiver

Informational tag.

Output jack to scoreboards.



OPTIONAL CARRYING CASE AVAILABLE:

The CC-3 double wall carrying case is lightweight and durable, made of high density polyethylene. Size 18 1/2" x 14 1/2" x 6". Black textured finish resists dents and scuffs. Case features trouble-free mechanical latches and hinges. Padded case interior is large enough for Nevco MPCW control, hand-held switch, and 25' of scoreboard control cable.



CERTIFICATIONS: FCC, CE, INDUSTRY CANADA.

MPCW-7 CONTROL: Microprocessor-based operator's control. Construction of black high impact break-resistant plastic, size 11" x 9 1/2" x 4 1/8" (.28 x .24 x .10 m). Includes: remote hand-held time switch accurate to 1/50th of a second, horn button included on time switch and keyboard overlay. Control features: bright LED display, lithium cell battery backup to maintain scoreboard memory and time of day, self test mode, power on-off switch, alternate time control, internal beeper acknowledging each entry, profile capabilities and multiple scoreboard operation. Capable of operating wireless or wired scoreboard systems.

TIMERS: For scoreboards with timers, additional features: time of day display, multiple time out timers with warning, interval horn, up-count auto stop with horn. 1/10th seconds are displayed during the last minute.

RANGE: Maximum range of 1,000 feet from control to receiver. (Clear Line of Sight)

DIMMER: Activated from control for scoreboard.

POWER: WALL OUTLET POWER ADAPTER: One required for each control and each receiver. Input: 100-240 Volts, .4 Amps, 50/60 Hz. Output: 9 volts, 1.67 Amps. Maximum 9 Volt output power 15 Watts.

OPERATES MODELS: All Nevco scoreboards except UltraScore, UltraWrestling, SEG-14, SEG-18, 9650, 9651 and 9652.

GUARANTEE: TO VIEW OR RECEIVE THE MOST RECENT COPY OF OUR GUARANTEE, PLEASE VISIT: NEVCO.COM/WARRANTY-LIMITATION

U.S. SERVICE: 1-800-851-4040

INTERNATIONAL SERVICE: 1-618-664-0360

CANADA SERVICE: 1-800-461-8550



MAXIMIZE YOUR IMPACT®

BUILD YOUR OWN DISPLAY AND SCORING SYSTEM ONLINE AT:

WWW.NEVCO.COM

U.S. & CANADA: 800-851-4040 INTERNATIONAL: 618-664-0360

FAX: 618-664-0398 E-MAIL: INFO@NEVCO.COM



BASKETBALL

SCOREBOARDS

MODEL 2750

Size: 8' x 6' x 8" (2.44 x 1.83 x .20 meters)

Approximate hanging weight: 107 lbs. (49 kg)

Digit Size: 13"/9" **Digit Color:** High Intensity Red & Amber



Advanced timing features ideal for Basketball/Volleyball/Wrestling Facilities.

- Energy-efficient LEDs reduce power consumption and operating expense.
- Ability to retrofit team name caption plates.
- Bright, long lasting LED lamp banks when ordered with rear-lit team names.
- Large, 4" Bonus, Double Bonus and Possession Indicator digits included.
- Durable and lightweight cabinet design.
- Universal—syncs with Nevco accessories.
- Extended advertising opportunities.
- Lighted time colon and decimal; automatically adjusts to 1/10th of a second.
- Built-in Power Factor Correction.
- Includes basketball, volleyball and wrestling caption plates.
- Soccer available with MPCX₂ and MPC7 series controls.
- Advantage Timer feature included with wrestling captions.



Combine your scoreboard with a Nevco monochrome or full-color message center to create a complete scoring and display system. Team/Sponsor signs also available.



MAXIMIZE YOUR IMPACT®

BUILD YOUR OWN DISPLAY AND SCORING SYSTEM ONLINE AT:

WWW.NEVCO.COM

U.S. & CANADA: 800-851-4040 INTERNATIONAL: 618-664-0360

FAX: 618-664-0398 E-MAIL: INFO@NEVCO.COM

INTEGRATED DISPLAY AND SCORING SOLUTIONS

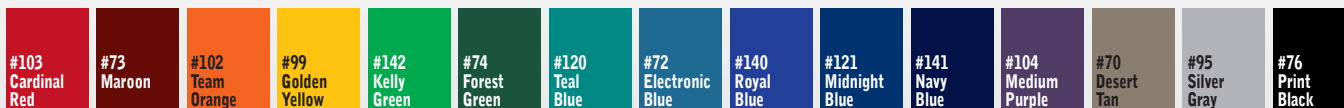


Model 2750 (Indoor) Basketball/Volleyball/Wrestling Scoreboard

SCOREBOARD/CONTROL OPERATING FEATURES

MODEL 2750	MPC WIRED	MPCW WIRELESS	MPCX ₂ WIRELESS
TIMING 13" High Intensity Red LED Digits	Bi-directional UP or DOWN count. Any number can be set between 0:00-99:59. 1/10th seconds display during final minute.	Bi-directional UP or DOWN count. Any number can be set between 0:00-99:59. 1/10th seconds display during final minute.	Bi-directional UP or DOWN count. Any number can be set between 0:00-99:59. 1/10th seconds display during final minute.
TEAM SCORES 13" High Intensity Amber LED Digits	Displays 0-199	Displays 0-199	Displays 0-199
PERIOD 9" High Intensity Amber LED Digits	Displays 0-9	Displays 0-9	Displays 0-9
NEXT POSSESSION (BASKETBALL) SERVE (VOLLEYBALL) ADVANTAGE (WRESTLING) High Intensity Amber LED	Displays arrow for each team.	Displays arrow for each team.	Displays arrow for each team.
BONUS/DOUBLE BONUS High Intensity Red LED	Displays the letter "B" for each team (BASKETBALL)	Displays the letter "B" for each team (BASKETBALL)	Displays the letter "B" for each team (BASKETBALL)
PLAYER/FOUL (BASKETBALL) GAME (VOLLEYBALL) WEIGHT (WRESTLING) 9" High Intensity Red LED Digits	BASKETBALL displays 0-99 for player number and 0-9 for personal fouls. VOLLEYBALL displays game number. WRESTLING can be used as advantage timer or display weight.	BASKETBALL displays 0-99 for player number and 0-9 for personal fouls. VOLLEYBALL displays game number. WRESTLING can be used as advantage timer or display weight.	BASKETBALL displays 0-99 for player number and 0-9 for personal fouls. VOLLEYBALL displays game number. WRESTLING can be used to display weight.
TEAM/FOULS (BASKETBALL) WON (VOLLEYBALL) MATCH (WRESTLING) 9" High Intensity Amber LED Digits	Displays 0-19 for each team.	Displays 0-19 for each team.	Displays 0-19 for each team.
TIME OF DAY	In place of displaying game time on the scoreboard, the "time out" time may be displayed or the "time of day". "Time of day" can still display after control turned off.	In place of displaying game time on the scoreboard, the "time out" time may be displayed or the "time of day". "Time of day" can still display after control turned off.	"Time of day" can display after control turned off.
HORN Two located in scoreboard	Sounds automatically at 0:00 for a minimum of two (2) seconds. May omit automatic horn. Can sound manually at any time.	Sounds automatically at 0:00 for a minimum of two (2) seconds. May omit automatic horn. Can sound manually at any time.	Sounds automatically at 0:00 for a minimum of two (2) seconds. May omit automatic horn. Can sound manually at any time.
JUNCTION BOXES	Two (2) 4"x2 1/8" with covers, furnished per scoreboard for installation.	N/A	N/A
CONTROL CABLE	One (1) length required of 2-WIRE (coaxial type) 1/4" diameter. Order length required.	N/A	N/A
SEGMENT TIMING	Supported.	Supported.	Requires MPCX ₂ segment timer control.

In addition to the standard 15 colors, Nevco can match any PMS color. Please contact your local Display and Scoring Consultant for pricing information.



AGENCY APPROVAL: UL/CUL listed, FCC, CE, INDUSTRY CANADA.

SCOREBOARD: Size 8'L x 6'H x 8"D (2.44 x 1.83 x .20 meters), constructed of aluminum. Hanging weight approximately 107 lbs. (49 kg).

CAPTIONS: HOME, GUESTS, FOULS, PLAYER, WON, GAME, MATCH, WEIGHT and PERIOD, white 6" high. (HOME and GUESTS are omitted when ordered with ETNs.)

LED UNITS: Seven-bar segmented digits with protective aluminum cover.

POWER WITHOUT ETNS: 120 VAC, .58 Amps, 50/60 Hz. / 240 VAC, .3 Amps, 50/60 Hz. Requires earth ground.

POWER WITH REAR-LIT CAPTIONS: 120 VAC, .79 Amps, 50/60 Hz./ 240 VAC, .4 Amps, 50/60 Hz. Requires earth ground.

POWER WITH ETNS: 120 VAC, .8 Amps, 50/60 Hz / 240 VAC, .4 Amps, 50/60 Hz. Requires earth ground.

POWER WITH REAR-LIT CAPTIONS AND ETNS: 120 VAC, .94 Amps, 50/60 Hz / 240 VAC, .47 Amps, 50/60 Hz. Requires earth ground.

BUILT-IN LIGHTNING PROTECTION: All models feature optical isolation circuitry providing additional protection against lightning strikes.

GUARANTEE: TO VIEW OR RECEIVE THE MOST RECENT COPY OF OUR GUARANTEE, PLEASE VISIT: WWW.NEVCO.COM/INFO/GUARANTEE.PHP
U.S. SERVICE: 1-800-851-4040. INTERNATIONAL SERVICE: 1-618-664-0360. CANADA SERVICE: 1-800-461-8550.

BUILD YOUR OWN DISPLAY AND SCORING SYSTEM ONLINE AT:

WWW.NEVCO.COM

U.S. & CANADA: 800-851-4040 INTERNATIONAL: 618-664-0360

FAX: 618-664-0398 E-MAIL: INFO@NEVCO.COM



Nevco

Indoor LED Scoreboard

Installation Manual



Retain this manual in your permanent file.

Installation Instructions

Installation consists of three steps, Unpacking the Equipment, Scoreboard mounting, and Electrical Connections. Be sure to read and understand all of the instructions before installing the equipment. Consult the “installer’s troubleshooting guide” following this section for verifications each step has been installed and is working correctly.

1. Unpacking the Equipment

- ❑ Inspect the shipping container for damage. If any damage can be seen, contact the carrier immediately.
- ❑ Carefully remove all equipment from its packing carton. **Do not** pry against the scoreboard in any way.

2. Scoreboard Mounting

- ❑ Refer to installation prints for detailed dimensions and power requirements.
- ❑ For boards shipped in multiple sections:
 - Place the top section on the bottom section over-lapping the top face in front of the bottom face.
 - Open the “Period” door by removing two Phillips screws.
 - Locate the 3/8”-16 bolts shipped in the accessory package.
 - Install the three bolts through the inside of the top section into the threaded inserts located on the top of the bottom section using the 3/8” flat washers.
 - Tighten until the sections are fully seated together. *Over-tightening can damage the scoreboard.*
 - Pull the wires through the 2” grommet and connect to the ILM as labeled.
- ❑ 3/8”-16 threaded inserts are installed in the top of the board. A 3/8”-16 eyebolt can be threaded into the inserts to aid in lifting for mounting. The eyebolts can be removed after lifting or left in for a suspension mount.
- ❑ Mount the board securely using the pre-punched 1/2” holes in the top flange. For multi-section boards also secure the bottom flange.
- ❑ Alternate 1/2” holes may be drilled in the flange for flexible placement of the mounting hardware.
- ❑ Shot clocks do not have the mounting flange, but can alternatively be mounted by the use of an SBSK package.
- ❑ Always use good mechanical practices when mounting the scoreboard.

3. Electrical Connections

Power Service

- ❑ Consult the table on the installation print for power requirements for your scoreboard model. Provide for a 40% safety factor to guard against tripping of the circuit breaker under low line conditions.
- ❑ Be sure to include any lighted signs, and message centers when sizing the supply wiring necessary to support the circuit load.
- ❑ The person performing the installation should be familiar with National and local electric codes.
- ❑ A standard IEC US grounded power cord is shipped with the board for attaching power.
- ❑ The power connection is low-profile to allow for flush mounting of signs and message centers.

Signal Connections

- ❑ Refer to wireless receiver installation prints for receiver mounting and connections.
- ❑ Connect the coax input to the BNC marked “Input”.
- ❑ A right angle BNC adapter can be used to allow for flush mounting of signs and message centers.
- ❑ The BNC marked “Output” can be used to drive other scoreboards sharing the same display data.

This allows scoreboards to be daisy-chained together, or the output can be used to supply signal to accessories such as a shot clock or end of period indicator. By adding a “T” connector at this location, two accessories can be connected at once with up to 1000^{ft.} of coax each.

2-Wire Coax Cable (RG58/U)

All 2-WIRE cable ordered from Nevco is direct burial type. It has a minimum dielectric strength of 300V, and conforms to UL standard 1365.

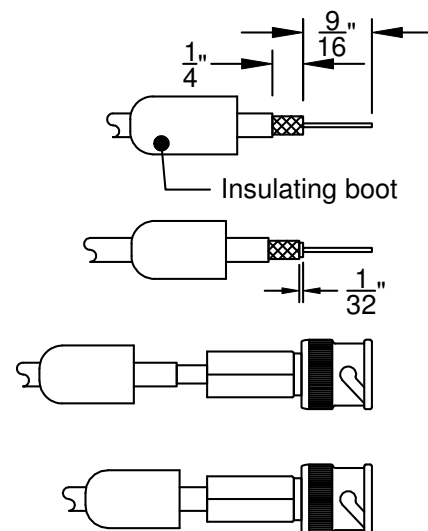
If the wiring is buried above the freeze line, bury the cable with sand to provide drainage and prevent damage from shifting soil.

Installing Cable Connectors

The 2-WIRE cable that comes with your scoreboard does not have connectors attached.

To install connectors on each end of the cable:

- ❑ Slide the insulating boot onto the cable and trim the cable as shown.
- ❑ Twist the outer braid in a **clockwise** direction so that at least 1/32 in. of the inner dielectric is bared and the braid is left flat. Be sure no strands of the outer braid are touching the center conductor.
- ❑ Insert the center conductor into the back of the connector, feeding it into the guide hole.
- ❑ Push the cable as far as possible into the connector.
- ❑ Screw the connector onto the cable in a clockwise direction until the connector stops turning.
- ❑ Slip the insulating boot over the back of the connector.

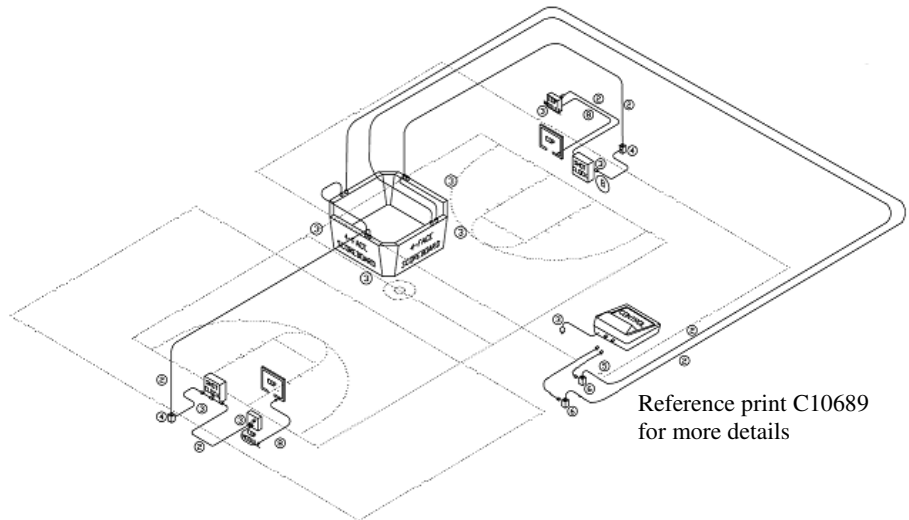


4. Scoreboard Systems

To install a system of scoreboard displays, controls and accessories follow these guidelines. Check the website Nevco.com or contact your local sales rep to obtain other system drawings.

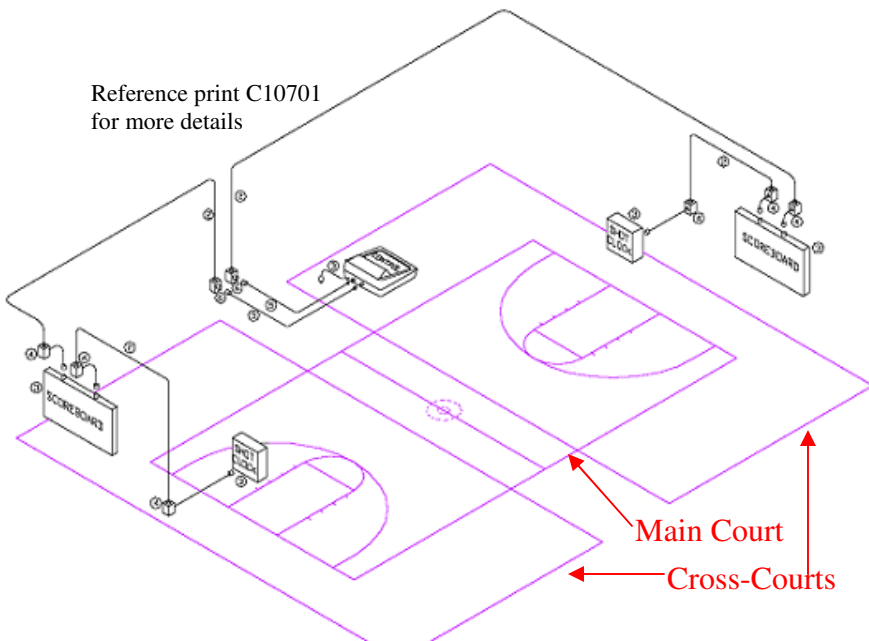
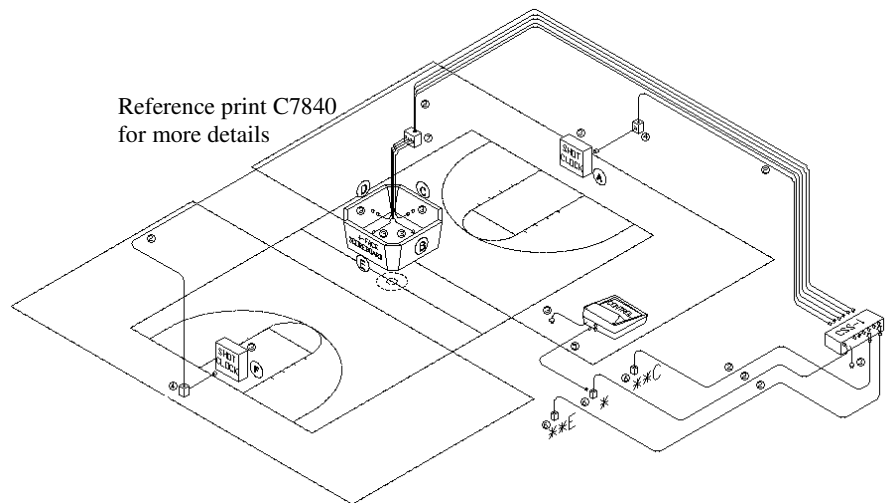
Daisy Chaining

When all or “groups” of scoreboards in the facility are to operate together, installation time and costs can be saved by daisy chaining the coax cable from scoreboard to scoreboard. The diagram to the right shows this operation.



Independent Operation

When the scoreboards are to be operated together, but at other times separated and operated independently, alternate control points or cable selection switch (CSS) units must be used. The diagram to the right shows this operation.



Mixed Operation

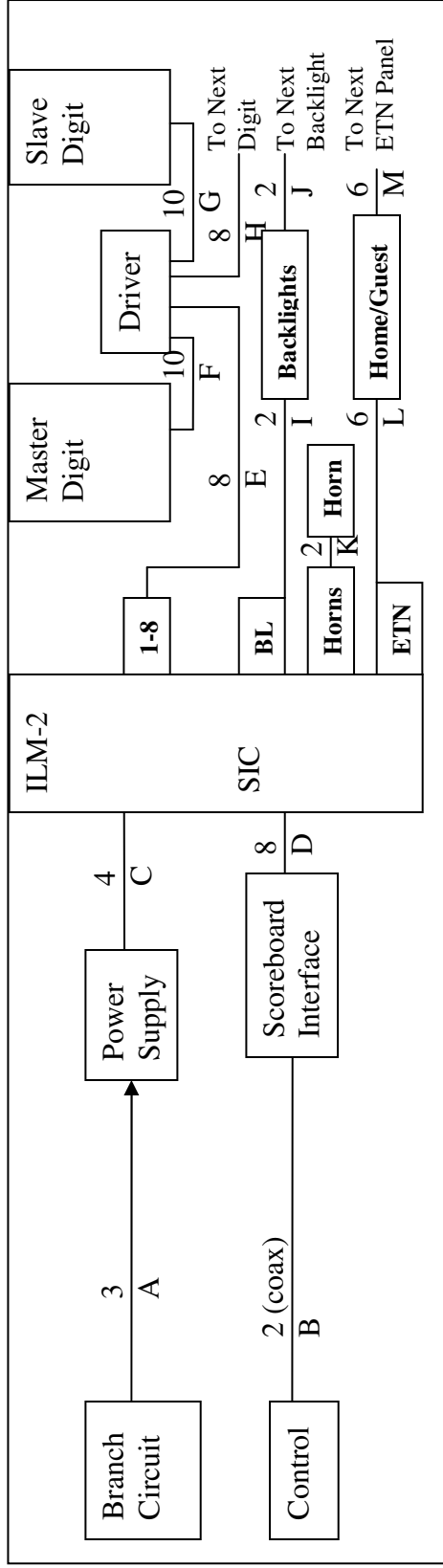
When independent operation is required, daisy chaining can still be used to save cost on installation. The diagram to the left shows this operation.

Wireless Operation

Wireless systems provide the maximum flexibility by allowing the operator the ability to program groups of receivers. A single receiver can drive multiple displays. See manual for the wireless device for more information.

Plug a control into both jacks for Main Court “All-on” operation (shown) or plug two controls into each jack for independent cross-court operation (not shown).

WIRED TROUBLESHOOTING GUIDE



The figure to the right labels the connections from A – M. The chart below lists the problem that can be identified should any connection be faulty. Check the control and service manual for more detailed information.

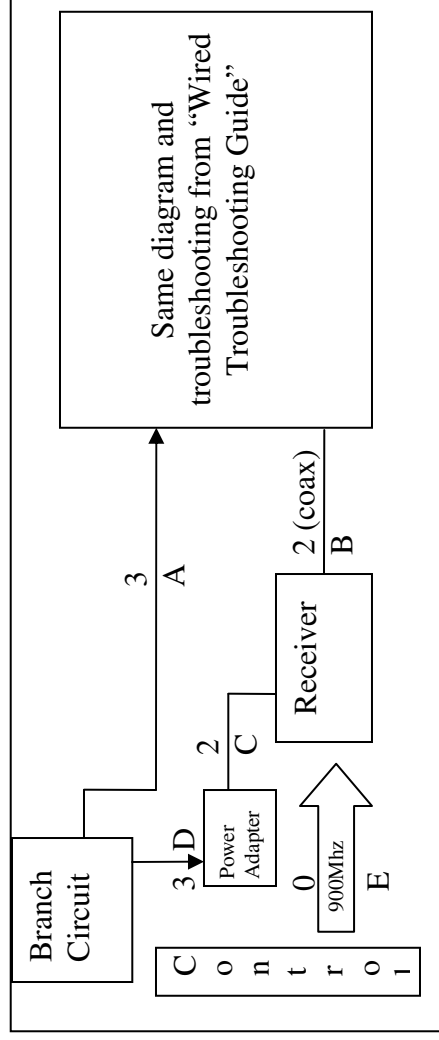
NOTE: The number that appears above a letter refers to the number of wires or conductors in the cable.

Situation	Symptom	Connection	Solution
The Scoreboard has no digits illuminated	When power is first applied the timer section does not rotate through a test pattern	A	Check branch circuit breaker and power connections
	When power is first applied the timer section rotates through a test pattern, but then the display goes out.	C	Check connection on ILM and power supply terminal screws
Some digits not illuminated, or non-working accessory	Only one digit	E	Check connection to first digit in timer section
	Horn	B	Check Coax connections. Plug control directly into the top of the board to eliminate installed coax cable. If that works, the cable run or terminations are bad. Try the 301 Model code, see control users manual on testing.
	Backlight channels	D	Check connections on inside of board at the SIC and at the ILM
	All or partial ETN's not working	F / G / H	Check 10-pin connection on Driver card and 2-pin on single segments
		K	Check 2-pin connection on ILM and at horn (2 horns ea.)
		I / J	Check 2-pin connection on ILM and at backlight. Check instructions to see if the backlights are supposed to be ON.
		L / M	Check 6-pin connection from ILM to ETN and between ETN panels

Wireless Troubleshooting Guide

The figure to the right labels connections (A – E) useful to troubleshooting. The chart below lists the problem that can be identified should any connection be faulty. Check the control and service manual for more detailed information.

NOTE: The number that appears above a letter refers to the number of wires or conductors in the cable.



Situation	Symptom	Connection	Solution	
The Scoreboard has no digits illuminated	When power is first applied to the board the timer section does not rotate through a test pattern	A	Check branch circuit breaker and power connections	
	When power is first applied the timer section rotates through a test pattern, but then the display goes out.	Other	See “Wired Troubleshooting Guide”	
	Receiver has No LEDs illuminated during first 5 seconds after power up	B	Check Coax connections. Plug control directly into the top of the board. Try the 301 Model code, see control users manual on testing.	
	Receiver LED Not ON solid		A	Check branch circuit breaker and power connections
			D	If the duplex receptacle has power, but the adapter LED is OFF, replace adapter
Some digits not illuminated, or non-working accessory	See “Wired Troubleshooting Guide”	C	Ensure DC plug is fully seated in receiver DC jack and making good connection	
			Replace Receiver	
			Follow control troubleshooting procedures, wrong wireless group, etc.	
			Receiver should be in clear line of sight from control.	
		E		
		Other	See “Wired Troubleshooting Guide”	



MAXIMIZE YOUR IMPACT™

NEVCO GUARANTEE

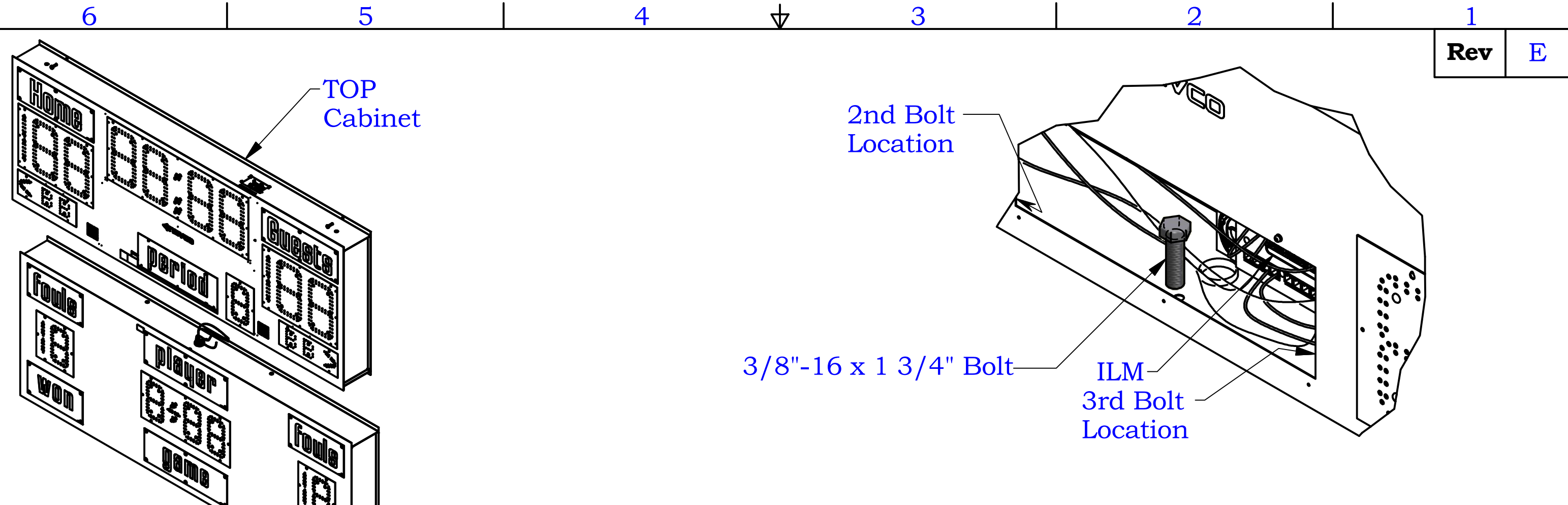
To view or receive the most recent copy of the Guarantee, please visit our website, www.nevco.com or call 1-618-664-0360

— IN USA —	— IN CANADA —
<p>NEVCO, Inc. 301 East Harris Avenue Greenville, IL 62246-2151 USA</p> <p>Telephone: 618-664-0360 Fax: 618-664-0398 TOLL-FREE 800-851-4040 (From all 50 states and Puerto Rico)</p>	<p>NEVCO, ULC 107 Forestview Rd. Orillia, ON L3V 7C1 Canada</p> <p>Telephone: 703-325-4005 Fax: 705-325-8891 TOLL-FREE 800-461-8550</p>
<p>Website: www.nevco.com Email: info@nevco.com</p>	

NOTE: This equipment has been tested and found to comply with the limits for a Class A digital device, pursuant to part 15 of the FCC Rules. These limits are designed to provide reasonable protection against harmful interference when the equipment is operated in a commercial environment. This equipment generates, uses, and can radiate radio frequency energy and, if not installed and used in accordance with the instruction manual, may cause harmful interference to radio communications. Operation of this equipment in a residential area is likely to cause harmful interference in which case the user will be required to correct the interference at his own expense.

This class A digital apparatus meets all requirements of the Canadian Interference- Causing Equipment Regulations.

Cet appareil numérique de la classe A respecte toutes les exigences du Règlement sur le matériel brouiller du Canada.




Model	ILM Plug 1/Func.	ILM Plug 2/Func.	ILM Plug 3/Func.	ILM Plug 4/Func.	ILM Plug 5/Function	ILM Plug 6/Func.	ILM Plug 7/Function	ILM Plug 8/Function	ETN 1	EC 2
2740 / 2742	TIME	HOME SCORE	GUEST SCORE	PERIOD	H. FOULS, PLYR & FOULS, G. FOULS	NOT USED	NOT USED	NOT USED	Home & Guests	NOT USED
2745	TIME	HOME SCORE	GUEST SCORE	PERIOD	H. FOULS, PLYR & FOULS, G. FOULS	NOT USED	NOT USED	NOT USED	Home & Guests	NOT USED
2750 / 2752	TIME	HOME SCORE	GUEST SCORE	PERIOD	H. FOULS, PLYR & FOULS, G. FOULS	NOT USED	NOT USED	NOT USED	Home & Guests	NOT USED
2760	TIME	HOME SCORE	GUEST SCORE	PERIOD	H. FOULS, PLYR & FOULS, G. FOULS	NOT USED	NOT USED	NOT USED	Home & Guests	NOT USED
2770 / 2772	TIME	HOME SCORE	GUEST SCORE	PERIOD	H. FOULS, PLYR & FOULS, G. FOULS, T.O.L.	NOT USED	NOT USED	NOT USED	Home & Guests	NOT USED
2775	TIME	HOME SCORE	GUEST SCORE	PERIOD	H. FOULS, PLYR & FOULS, G. FOULS, T.O.L.	NOT USED	NOT USED	NOT USED	Home & Guests	NOT USED
2780	TIME	HOME SCORE	GUEST SCORE	PERIOD	H. FOULS, PLYR & FOULS, G. FOULS	NOT USED	NOT USED	NOT USED	Home & Guests	H. FOULS, PLYR & FOULS, G. FOULS
2781	TIME	HOME SCORE	GUEST SCORE	PERIOD	H. FOULS, PLYR & FOULS, G. FOULS, T.O.L.	NOT USED	NOT USED	NOT USED	Home & Guests	H. FOULS, PLYR & FOULS, G. FOULS, T.O.L.
2785	TIME	HOME SCORE	GUEST SCORE	PERIOD	H. FOULS, PLYR & FOULS, G. FOULS, T.O.L.	NOT USED	NOT USED	NOT USED	Home & Guests	H. FOULS, PLYR & FOULS, G. FOULS, T.O.L.
4710	TIME	HOME SCORE	GUEST SCORE	PERIOD	NOT USED	NOT USED	HOME PENALTY	GUEST PENALTY	Home & Guests	NOT USED
4711	TIME	HOME SCORE	GUEST SCORE	PERIOD	NOT USED	NOT USED	HOME PEN. & PLYR NO.	GUEST PEN. & PLYR NO.	Home & Guests	NOT USED
4750	TIME	HOME SCORE	GUEST SCORE	PERIOD	SHOTS ON GOAL	NOT USED	HOME PENALTY	GUEST PENALTY	Home & Guests	NOT USED
8745	TIME	HOME SCORE	GUEST SCORE	LANES & EVENT	NOT USED	NOT USED	NOT USED	NOT USED	Home & Guests	NOT USED

Notes:

1. Set the top on the bottom cabinet section.
2. The Top cabinet face overlaps the bottom.
3. Open "Period" door and attach the sections together using the (3) provided bolts/washers. Bolts must be 1 3/4" long.
4. Pull the wires up through the 2" grommet.

Multi-Section
Indoor LED
Scoreboard
Installation



Nevco, Inc.
Greenville, Illinois 62246

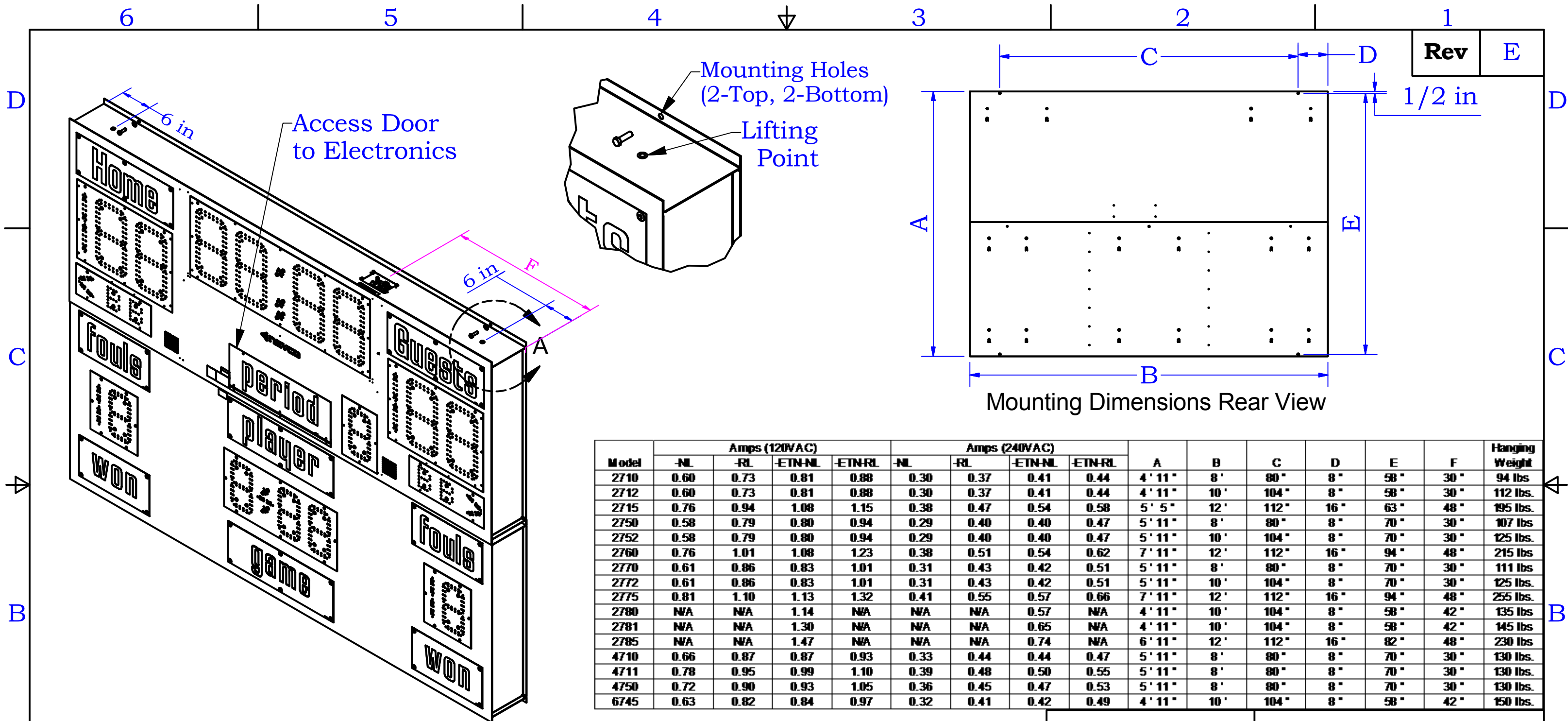
Last ECO

Drawing No. **241-0284**

Drawn
DLP

Date
9/26/2016

Sheet 1 of 2



Notes:

1. Lifting Point 3/8"-16 Eyebolts can be threaded into the lifting point to lift the scoreboard for mounting or for suspension mount. Eyebolts can be removed after the scoreboard is mounted.
2. Mount Scoreboard securely using 3/8" bolts or anchors and supplied washers using the existing mounting holes or drill 1/2" alternate locations.
3. This sign is intended to be installed in accordance with the requirements of Article 600 of the Nationale Electric Code and/or other applicable codes. This includes proper grounding and bonding of the sign.

Multi-Section
Indoor LED
Scoreboard
Installation



Nevco, Inc.
Greenville, Illinois 62246

Last ECO

Drawing No. 241-0284

Drawn
DLP

Date
9/26/2016

Sheet 2 of 2

Rev	E
-----	---

Box, outlet and cover
(supplied by others)

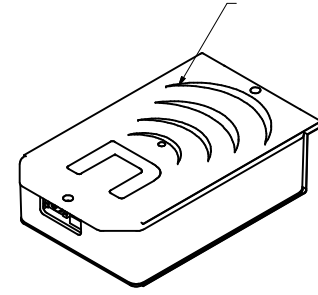
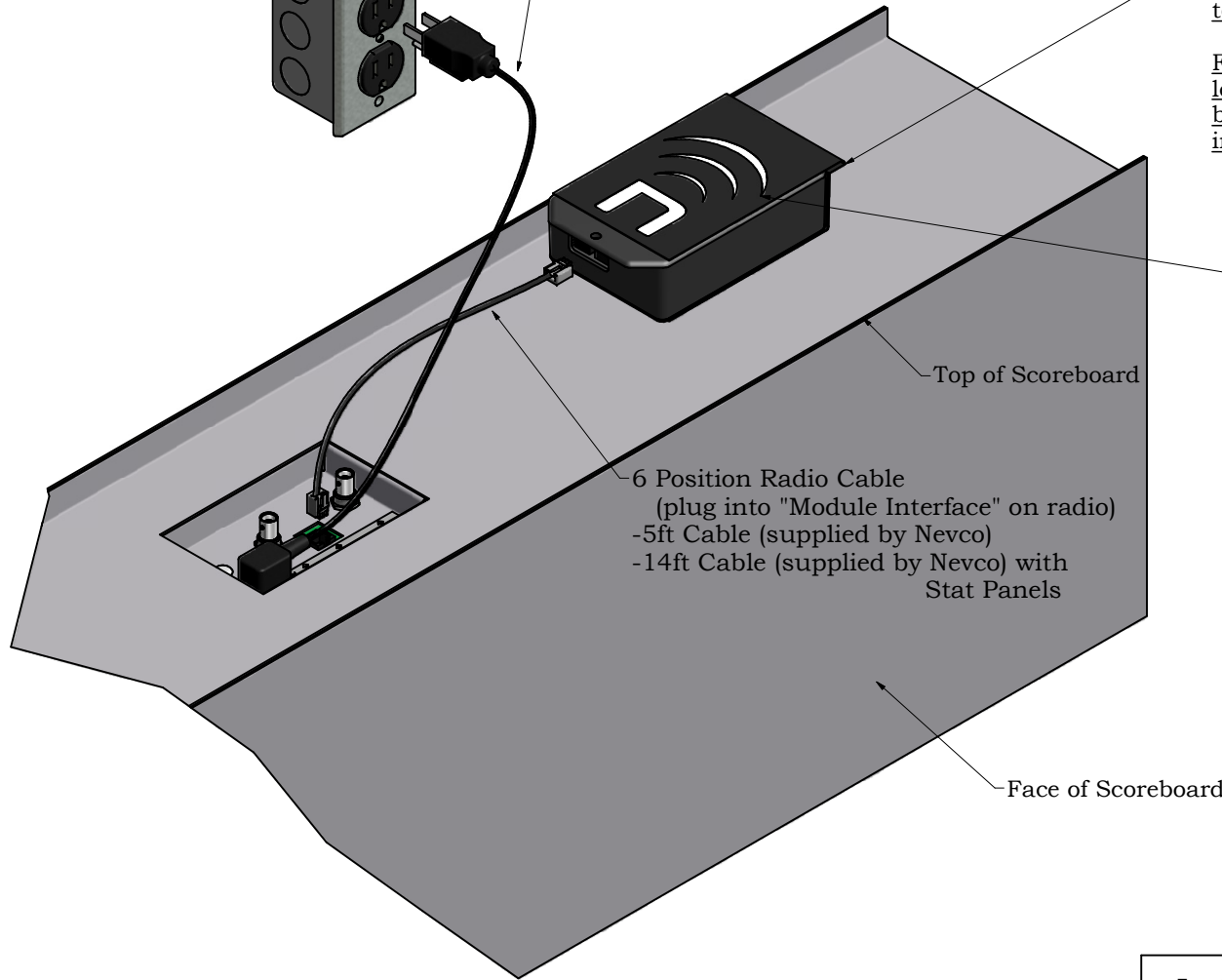
Power Cord:

- 6' 7" Power Cord 110 VAC (supplied by Nevco)
- Optional 15' Power Cord (009-0324) available from Nevco
- Optional 6' 7" Power Cord 220 VAC (009-0257) available from Nevco

Before installing radio onto scoreboard take note of the radios serial number. It may be needed later to program the radio ID into the wireless controller.

For installations with multiple radios the intended location for the specific radio may be written on the back of the case. Please verify these locations and install the radios accordingly.


3 waves denotes MPCW Series 7
4 waves denotes MPC-X2 Receiver

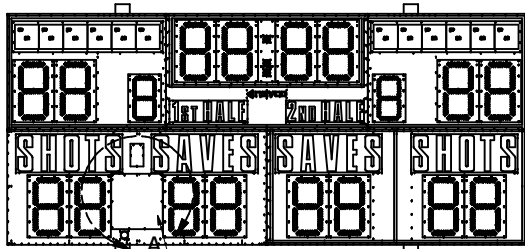


6 Position Radio Cable
(plug into "Module Interface" on radio)
-5ft Cable (supplied by Nevco)
-14ft Cable (supplied by Nevco) with
Stat Panels

Note:
-This scoreboard is intended to be installed in accordance with the requirements of Article 600 of the National Electrical Code and/or other applicable local codes. This includes proper grounding and bonding of the scoreboard.

-For power requirements see the scoreboard installation print for the model of scoreboard being installed

Indoor Installation MPCW Series 7 / MPC-X2 Wireless Receiver (Top Mount)			
		Nevco, Inc. Greenville, Illinois 62246	
Drawing No. 275-0166		Sheet 1 of 1	
Drawn MMK	Date 4/29/15		



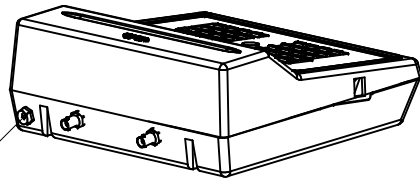
Locate removable door on scoreboard. Remove door and remove cover of electrical enclosure to make connections shown to right.

Notes:

- 1) Phillips head screw driver required to remove door and cover.
- 2) Be sure to replace cover and door after installation.
- 3) Some scoreboards will already have a cable routed in the board for this application.
- 4) Note serial number on back of receiver assembly for programming MPCW or MPCX2 controller.



MPCX2 Control



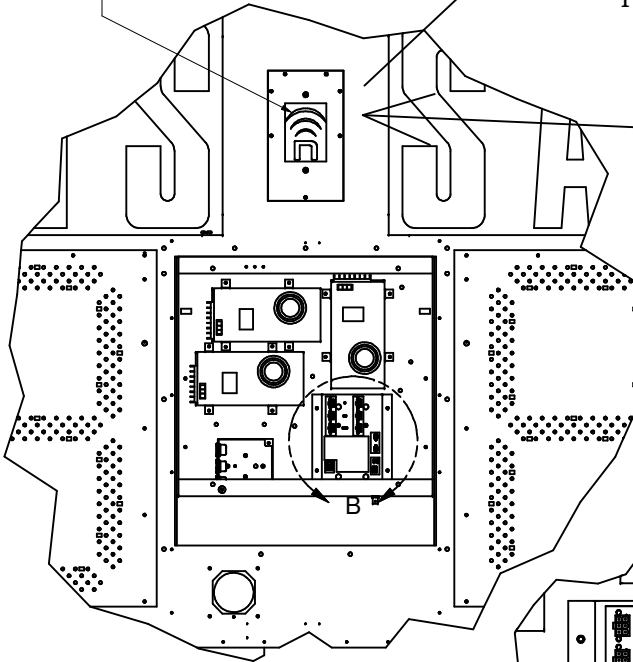
Connect to power

**MPCW
Operator's Control**

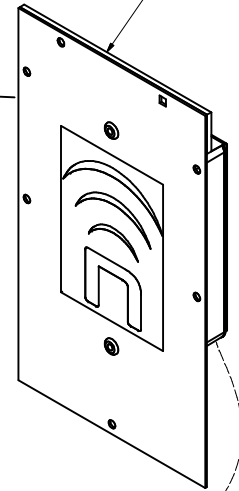
Panel will be located near electrical enclosure

Remove existing panel near electrical enclosure and route supplied cable from OCM to opening. (keep screws to install receiver assembly)

Receiver Assembly
3 bars denotes W7
4 bars denotes X2

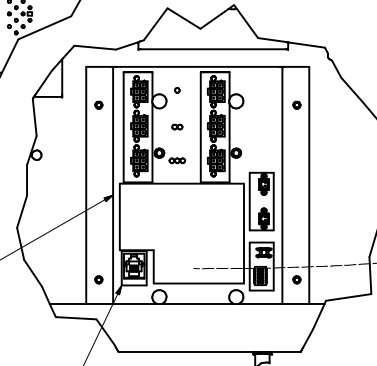


Connect cable to receiver assembly and mount receiver assembly using existing screws



DETAIL A


Outdoor Control Module (OCM)



Connect cable here

DETAIL B

Route supplied cable from OCM to opening where the receiver assembly is to be installed BEFORE mounting receiver assembly.

Wireless Outdoor MPCW7 / X ₂ Receiver Installation		 Nevco, Inc. Greenville, Illinois 62246	
Drawn DBB	Date 3/4/15	Sheet 1 of	1