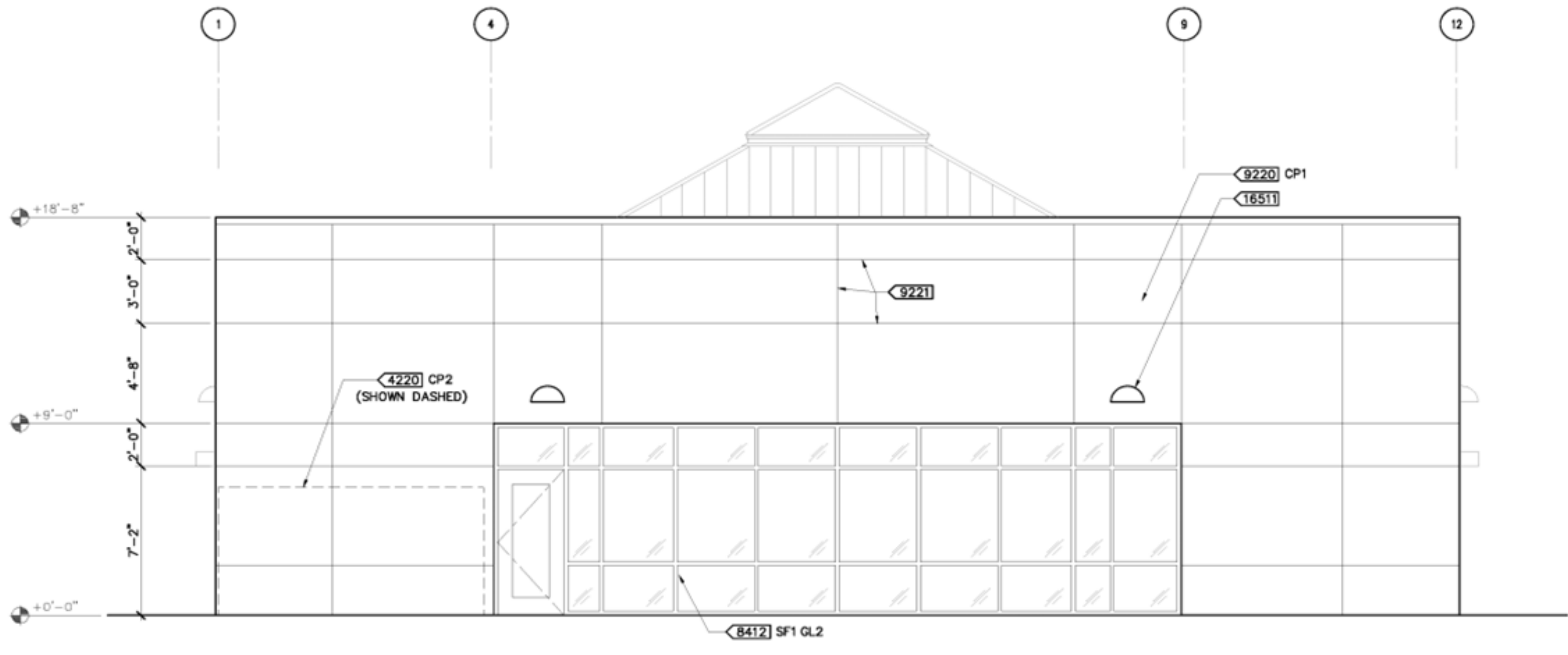
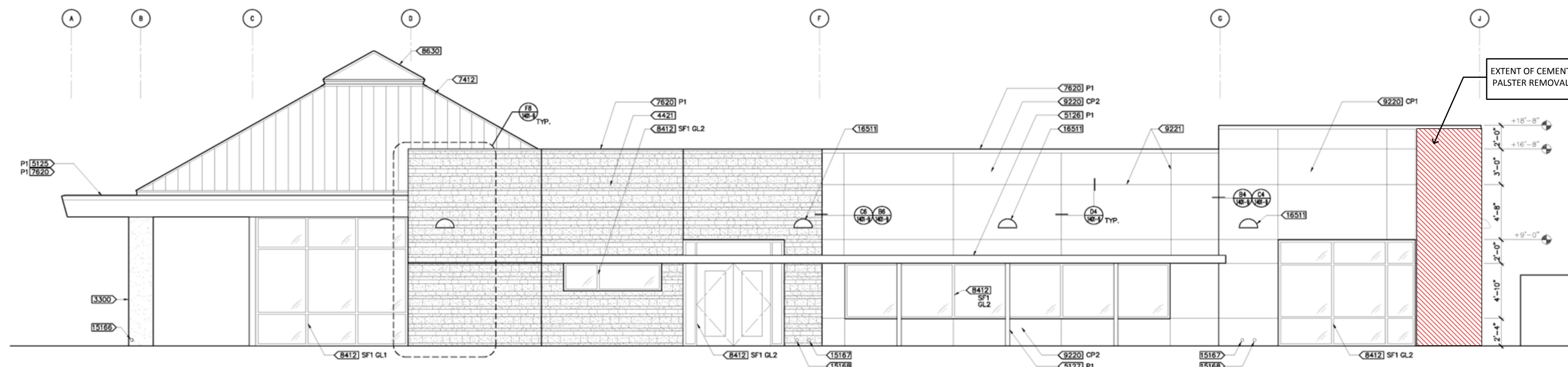


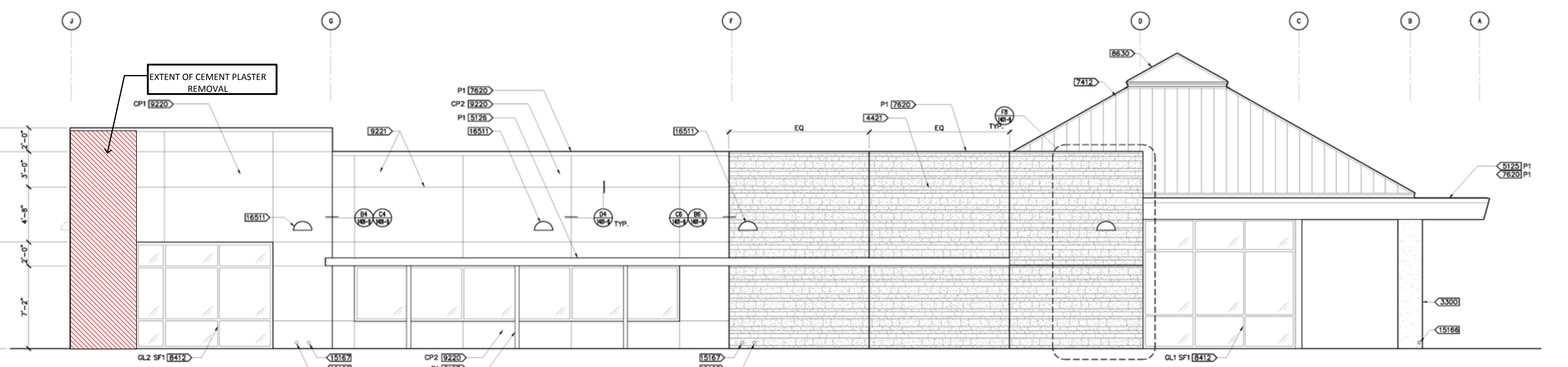
B3 NORTH ELEVATION



B8 SOUTH ELEVATION



D5 WEST ELEVATION



F5 EAST ELEVATION

- EXT. COLORS & FINISHES:**
- ADHERED STONE CLADDING:**
SEE DETAIL: (FR 16511)
- CEMENT PLASTER ACRYLIC TOP COAT:**
CP1 - MATCH 611 ICI "SEAGULL GRAY" (LIGHT BROWN)
CP2 - MATCH 585 ICI "WALLSTREET" (DARK BROWN)
- STANDING SEAM METAL ROOF:**
R1 - MATCH AEP SPAN, COOL ZACTIQUE II
- STOREFRONT:**
SF1 - MATCH ALCON COMPOSITES CHAMPAGNE METALLIC A3000-DXLE
- GLAZING:**
GL1 - CLEAR GLASS
GL2 - GRAY TINTED GLASS
- PAINT COLORS:**
P1 - MATCH R1 (ABOVE)

- KEY NOTES:**
- (3300) CAST-IN-PLACE CONCRETE COLUMN 24" DIA. WITH MEDIUM STUCCO FINISH
- (4220) CONCRETE UNIT MASONRY WITH PORTLAND CEMENT PLASTER WITH ACRYLIC PLASTER FINISH
- (4421) ADHERED EXTERIOR STONE CLADDING: (FR 16511)
- (5125) ARCHITECTURAL EXPOSED STRUCTURAL STEEL CHANNEL MITER AND WELD CORNERS NO EXPOSED FASTENERS. SEE STRUCT.
- (5126) ARCHITECTURAL EXPOSED STRUCTURAL STEEL CANOPY SHADE, SEE: (B1 16511)
- (5127) ARCHITECTURAL EXPOSED STRUCTURAL STEEL COLUMN
- (7412) STANDING SEAM METAL ROOF
- (7620) PAINTED GALVANIZED SHEET METAL COPING.
- (8412) ALUMINUM FRAMED ENTRANCES AND STOREFRONTS
- (8630) METAL FRAMED SKYLIGHT WITH CLEAR GLASS
- (9220) PORTLAND CEMENT PLASTER WITH ACRYLIC PLASTER FINISH: (ML 16511)
- (9221) REVEAL, TYP. SEE: (FR 16511)
- (11518) GRAVESITE LOCATOR (OFC), SEE: (B1 16511)
NOTE: VERIFY FINAL LOCATION OF GRAVE SITE LOCATORS W/ CONTRACTING OFFICER'S TECHNICAL REP.
- (15168) RWL CAST INTO CAST-IN-PLACE CONC. COLUMN, DAYLIGHT AT 6" A.F.F.
- (15167) RWL DOWNSPOUT NOZZLES, SEE: (C2 16511) (C3 16511) (C4 16511)
PROVIDE CONC. SPLASH BLOCK AT PLANTER AREAS, TYP.
- (15168) OVERFLOW DOWNSPOUT NOZZLES, SEE: (C2 16511) (C3 16511) (C4 16511)
- (16511) WALL MOUNTED LIGHT FIXTURE, PER ELEC.

AS - BUILT DRAWINGS

		MARCH 2010		AS-BUILT DRAWINGS		Subconsultant List		 <div>NATIONAL CEMETERY ADMINISTRATION</div>		Drawing Title		Project Title		Date: MARCH 2010	
				PREPARED FROM AS-BUILT DRAWINGS PROVIDED BY CLARK & SULLIVAN, FEBRUARY, 2010. INFORMATION HAS NOT BEEN FIELD VERIFIED BY A/E.		DREYFUSS & BLACKFORD 3540 FOLSOM BLVD., SACRAMENTO, CA. 95816 (916) 453-1234				P.I.C./ADMINISTRATION BUILDING EXTERIOR ELEVATIONS		NEW NATIONAL CEMETERY PHASE IB DEVELOPMENT		Project No. 921CM2001	
				<div>Carter Burgess</div> <div>A Wholly Owned Subsidiary of Jacobs</div> <div>Consultants in Architecture, Engineering, Planning, and the Environment</div> <div>Sacramento Office 180 Promenade Circle, Suite 300 Sacramento, California 95834 (916) 929-3323 Fax (916) 929-1772</div>		CAPITAL ENGINEERING CONSULTANTS 11020 SUN CENTER DR., STE. 100 RANCHO CORDOVA, CA. 95670 (916) 851-3500									
						ECOM ENGINEERING CONSULTANTS 1796 TRIBUTE RD., SUITE 100, SACRAMENTO, CA. 95815 (916) 641-5600									
						BUEHLER & BUEHLER ASSOCIATES 600 Q STREET, STE. 200, SACRAMENTO, CA. 95814 (916) 443-0303									
						THE SIERRA WEST GROUP, LLC 2730 GATEWAY OAKS DRIVE, STE. 110 SACRAMENTO, CA. 95833 (916) 925-4000									
						MARCUS H. BOLE & ASSOCIATES 104 BLOCK DR. WHEATLAND, CA. 95692 (530) 633-0117									
						PAR ENVIRONMENTAL 1906 21ST STREET, SACRAMENTO, CA. 95816 (916) 739-8356									
						ESPANA GEOTECHNICAL CONSULTING 502 GIUSEPPE CT., ROSEVILLE, CA. 95678 (916) 773-2600									
						PERRY DESIGN 2091 HIDDEN GOLD TRAIL, COOL, CA. 95614 (530) 823-2621									
Revisions		Date								Approved: Director, Office of Construction Management		Building Number 1401		Checked PAL	
										Approved: Director, Project Management Service		Location SACRAMENTO VALLEY VA NATIONAL CEMETERY SOLANO COUNTY, CALIFORNIA		Dwg. 143 of 222	