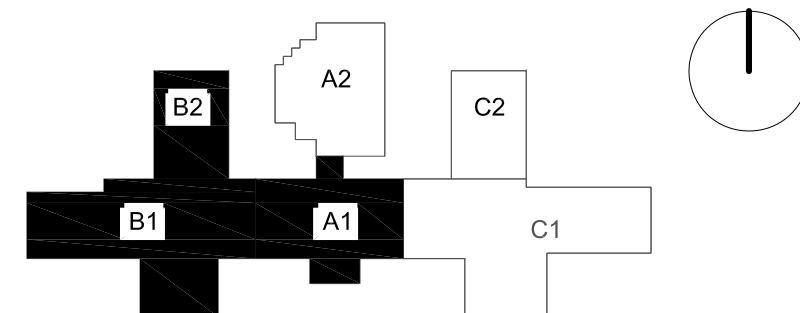


ARCHITECTS/ENGINEERS:

Building Key Plan:



**VA EASTERN KANSAS
HEALTH CARE SYSTEM**

Dwight D. Eisenhower VA Medical Center
Leavenworth
Colmery-O'Neil VA Medical Center
Topeka



U.S. Department
of Veterans Affairs

Drawing Title:

LEVEL 1 PARTIAL PLAN

Scale:
 $3/16" = 1'-0"$

Approved:

	Project Title:
--	-----------------------

PROJECT NAME

Building Number:	4
------------------	---

Checked By:	XXX
-------------	-----

Drawn By:
SRT

Location:	COLMERY-O'NEIL VA MEDICAL CENTER 3333 GAGE BLVD. TORREYBURNE, IL 60466
-----------	---

Date: 02/06/2017

Project No.
589A5-xx-xxx

Drawing No.

X-XXXX
Y Y Y Y

VA | Department of
Veterans Affairs