

GENERAL NOTES

1. VERIFY ALL EXISTING CONDITIONS AND NOTIFY VA IMMEDIATELY OF ANY DISCREPANCIES NOTED.
2. CONTRACTOR TO PROVIDE WOOD BLOCKING IN WALLS AS REQUIRED FOR WALL MOUNTED EQUIPMENT AND CASEWORK.
3. PATCH ALL SURFACES TO MATCH EXISTING SURFACES AT LOCATIONS INCLUDING DEMOLISHED MECHANICAL AND ELECTRICAL EQUIPMENT. COORDINATE WITH MECH. AND ELEC. DRAWINGS FOR LOCATIONS.
4. DIMENSIONS ARE TO FACE OF NEW METAL STUD, FACE OF BRICK, OR FACE OF EXISTING WALL SURFACE.

LEGEND

PERIMETER DRAINAGE PIPE. SEE UTILITY SITE PLAN FOR SUMP CONNECTION LOCATIONS.

PLAN NOTES

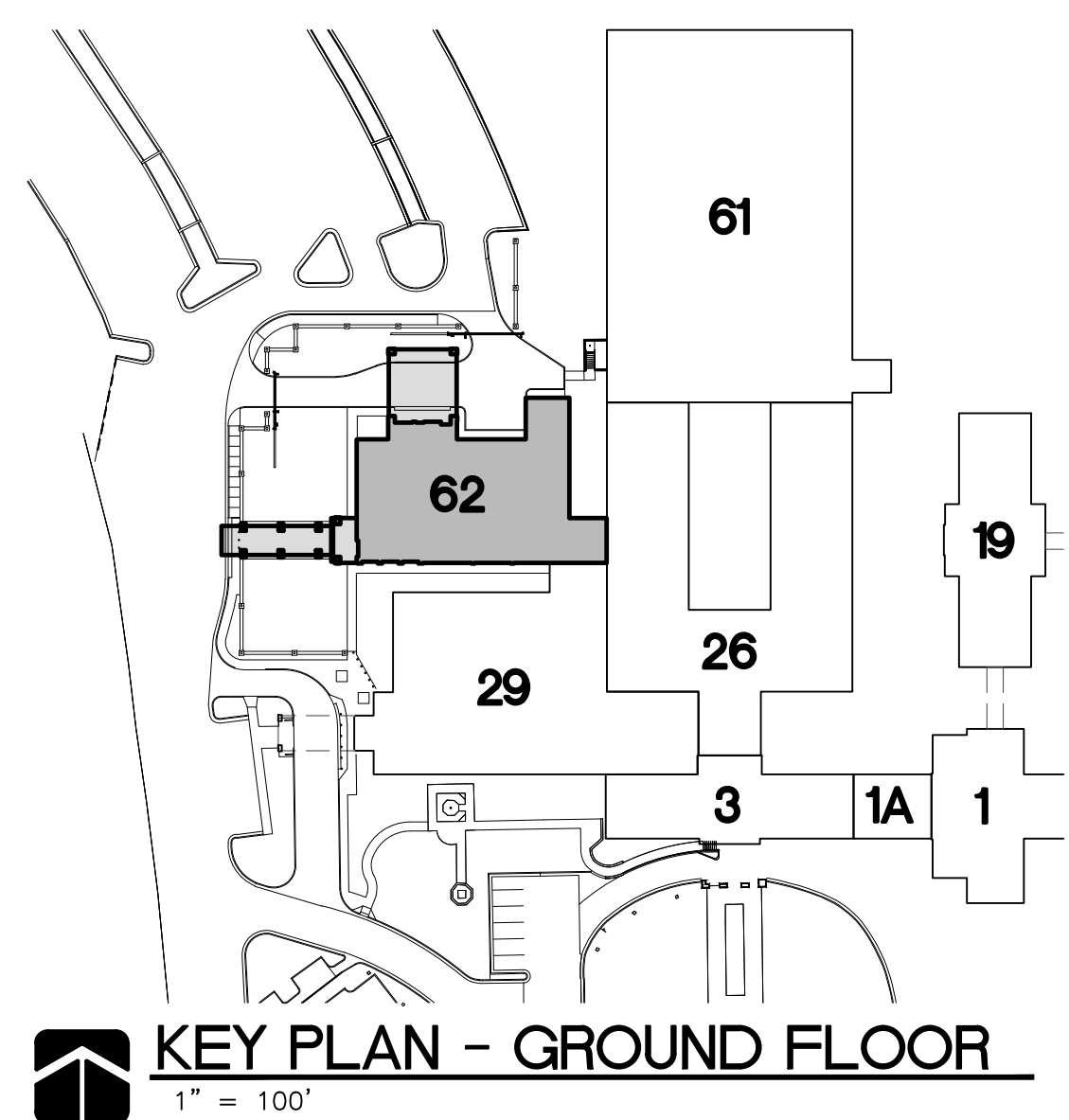
1. INFILL WINDOW OPENING WITH NO. '8' PARTITION AND 4" CMU WITH MASONRY TIES @ 16" O.C. HORIZ. AND VERT. PATCH/REPAIR ADJACENT GYP. BD. AND PAINT.
2. OVERHANG ABOVE.
3. ACCESS PANEL - 24"Wx30"H. - REF. SPEC'S.
4. STEEL COLUMN - REF. STRUCT.
5. TIE EXISTING PERIMETER DRAINAGE PIPE INTO NEW PERIMETER DRAINAGE PIPE. FIELD VERIFY ELEVATION HEIGHTS.
6. ROUTE PERIMETER DRAINAGE PIPE TO EXISTING SUMP PUMP - REF. CIVIL.
7. PATCH/REPAIR GYP. BD. AT REMOVED WALL AND PAINT TO MATCH EXISTING.
8. REMOVE EXISTING WINDOW AND TRIM. INFILL WITH 3-5/8" METAL STUDS AT 16" O.C. R-13 BATT INSULATION, 5/8" GYP. BD. PAINT ENTIRE WALL TO MATCH EXISTING.
9. INFILL ENTIRE WINDOW OPENING WITH BRICK TO MATCH EXISTING. REMOVE EXISTING BRICKS AT SIDES OF OPENINGS TO ALLOW TOOTHING IN BRICKS.
10. REMOVE EXISTING GYP. BD. AS REQ'D. FOR NEW MED GAS PIPING PER MECHANICAL DRAWINGS. PATCH WALL TO MATCH EXISTING FINISHES.

DEMOLITION NOTES

1. REMOVE EXISTING MASONRY/BRICK WALL TO SIZE SHOWN.
2. REMOVE EXISTING DOOR, FRAME, AND HARDWARE.
3. REMOVE EXISTING WALL.
4. REMOVE EXISTING WINDOW AFTER NEW WALL IS INSTALLED IN EXISTING BUILDING.
5. REMOVE ACOUSTICAL CEILING TILE AND SUSPENDED METAL GRID. TIE INTO EXISTING AS REQUIRED.
6. REMOVE EXISTING WINDOW, HEAD, AND SILL.
7. REMOVE EXISTING FLOORING AND PREP/PREPARE FLOOR FOR NEW FINISH. TIE INTO EXISTING AS REQUIRED.
8. REMOVE EXTERIOR PERIMETER DRAINAGE PIPE AT NEW BUILDING LOCATIONS. TIE INTO NEW.

PHASING NOTES

1. COORDINATE WORK IN EXISTING BUILDINGS TO MINIMIZE DISRUPTION TO OWNER'S OPERATIONS.
2. BUILDINGS 26 AND 29 WILL REMAIN IN OPERATION DURING CONSTRUCTION.



GROUND FLOOR PLAN
3/16" = 1'-0"

Addendum 002	08/25/2017
Addendum 001	08/22/2017
Revisions	



ALLOY ARCHITECTURE
project no.
15206
This drawing and all information herein is the exclusive property of Alloy Architecture and is not to be copied or used in any way without the express written consent of Alloy Architecture. (All drawings, specifications, ideas, designs, and arrangements appearing hereon constitute the original and unpublished Work of the Architect.)
Copyright © 2017
Alloy Architecture

CHRIS N. TILSON
LICENSED ARCHITECT
4461
KANSAS
12/1/17

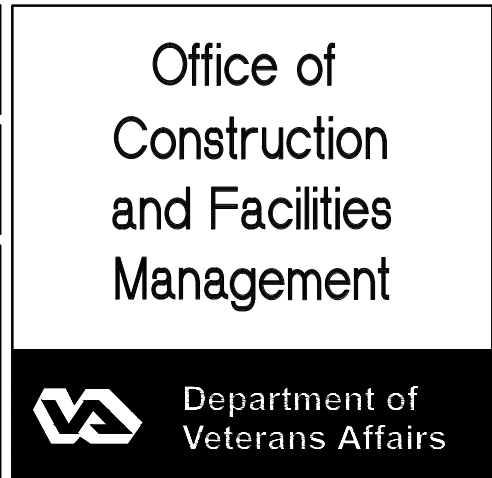
ARCHITECT/ENGINEERS:
ARCHITECT - ALLOY ARCHITECTURE
CIVIL ENGINEER - BAUGHMAN CO.
MECHANICAL ENGINEER - MECHANICAL CONSULTANTS INC.
ELECTRICAL ENGINEER - BASIS CONSULTING ENGINEERS
STRUCTURAL ENGINEER - DUDLEY WILLIAMS AND ASSOCIATES P.A.

Drawing Title	GROUND FLOOR PLAN
---------------	-------------------

Project Title	EMERGENCY DEPARTMENT ADDITION
Location	5500 EAST KELLOGG WICHITA, KANSAS
Date	JUNE 16, 2017
Checked	CNT, RDS
Drawn	GRS

Office of
Construction
and Facilities
Management
Department of
Veterans Affairs

Project Number
589-700
Building Number
62
Drawing Number
62-A-101
Dwg. 15 of 108

 Department of
Veterans Affairs

DOOR SCHEDULE - FIRST FLOOR

NO.	SIZE	DOOR	FRAME	DETAILS	THRESHOLD	REMARKS
MAT.	ELEV.	GLASS/RATING	MAT.	ELEV.	RATING	
HEAD	JAMB					
001A	9'-8 1/2" x 4'-0" R.O.	AL	G	EG-2	-	1/A-508
001B	9'-8 1/2" x 4'-0" R.O.	AL	G	EG-2	-	1/A-508
003	3'-6 1/2" x 7'-0"	WD	A	-	HM F1	6/A-508
005A	3'-8 1/2" x 7'-0"	HM	D	IG-2	-	11/A-508
005B	3'-6 1/2" x 7'-0"	WD	A	-	HM F1	9/A-508
006A	3'-8 1/2" x 7'-0"	HM	D	IG-2	-	11/A-508
006B	3'-6 1/2" x 7'-0"	WD	A	-	HM F1	9/A-508
008A	9'-8 1/2" x 8'-0"	AL	G	IG-1	-	13/A-508
008B	PAIR 3'-8 1/2" x 7'-0"	WD	C	FG-1	60	16/A-508
008C	3'-0 1/2" x 7'-0"	HM	C	IG-2	-	11/A-508
009	3'-0 1/2" x 7'-0"	WD	E	IG-1	-	4/A-508
012	3'-6 1/2" x 7'-0"	WD	A	-	HM F1	4/A-508
013	9'-8 1/2" x 8'-0"	AL	G	EG-2	-	18/A-508
014A	4'-0 1/2" x 7'-8"	HM	A	-	HM F2	21/A-508
014B	4'-0 1/2" x 7'-0"	WD	D	IG-4	-	4/A-508
014C	4'-0 1/2" x 7'-0"	WD	D	IG-4	-	4/A-508
015	PAIR 2'-6 1/2" x 8'-0"	HM	A	-	HM F4	22, 23/A-508
016	3'-6 1/2" x 7'-0"	WD	A	-	HM F1	4/A-508
017A	3'-6 1/2" x 7'-0"	WD	A	-	HM F1	9/A-508
017B	3'-6 1/2" x 7'-0"	WD	A	-	HM F1	4/A-508
018A	3'-6 1/2" x 7'-0"	WD	A	-	HM F1	9/A-508
018B	4'-0 1/2" x 7'-0"	WD	D	FG-2	60	9/A-508
021	4'-0 1/2" x 7'-0"	WD	D	IG-4	-	28/A-508
023	3'-6 1/2" x 7'-0"	WD	A	-	HM F1	26/A-508
024	3'-6 1/2" x 7'-0"	WD	B	-	HM F1	26/A-508
025A	4'-0 1/2" x 7'-0"	WD	D	IG-3	-	5/A-508
025B	10'-0 1/2" x 8'-0" R.O.	AL	F	-	MFR	25/A-508
029A	4'-0 1/2" x 7'-0"	WD	D	FG-2	60	4/A-508
029B	3'-6 1/2" x 7'-0"	WD	A	-	HM F1	4/A-508
030A	4'-0 1/2" x 7'-0"	WD	D	FG-2	60	4/A-508
030B	3'-8 1/2" x 7'-0"	HM	A	-	HM F2	11/A-508
031	3'-6 1/2" x 7'-0"	WD	A	-	HM F1	4/A-508
032	3'-0 1/2" x 7'-0"	WD	E	IG-1	-	4/A-508
035	3'-6 1/2" x 7'-0"	WD	A	-	HM F1	9/A-508
036	3'-6 1/2" x 7'-0"	WD	A	-	HM F1	4/A-508
037A	PAIR 3'-8 1/2" x 7'-0"	WD	C	FG-1	60	16/A-508
037B	PAIR 3'-10 1/2" x 7'-0"	HM	C	FG-3	60	11/A-508
038	PAIR 3'-10 1/2" x 7'-0"	HM	C	FG-3	60	11/A-508
040A	PAIR 4'-0 1/2" x 7'-0"	WD	C	FG-1	120	21/A-509
040B	PAIR 2'-10 1/2" x 7'-0"	WD	C	FG-1	120	23/A-509
041	3'-6 1/2" x 7'-0"	HM	A	-	HM F1	4/A-508
042	3'-6 1/2" x 7'-0"	HM	A	-	HM F1	4/A-508
043	3'-6 1/2" x 7'-0"	WD	A	-	HM F1	4/A-508
044	3'-0 1/2" x 7'-0"	WD	A	-	HM F1	4/A-508
045	3'-0 1/2" x 7'-0"	WD	A	-	HM F1	4/A-508
046	3'-0 1/2" x 7'-0"	WD	A	-	HM F1	4/A-508
047	3'-6 1/2" x 7'-0"	WD	A	-	HM F1	4/A-508
048	3'-6 1/2" x 7'-0"	WD	A	-	HM F1	4/A-508
049A	3'-0 1/2" x 7'-0"	HM	A	-	HM F2	26/A-509
049B	8'-0 1/2" x 12'-8"	STL	F	-	STL	1/A-510
050	3'-0 1/2" x 7'-0"	HM	A	-	HM F1	4/A-510
051	4'-0 1/2" x 7'-0"	HM	A	-	HM F1	6/A-510
052	3'-6 1/2" x 7'-0"	WD	A	-	HM F1	4/A-508

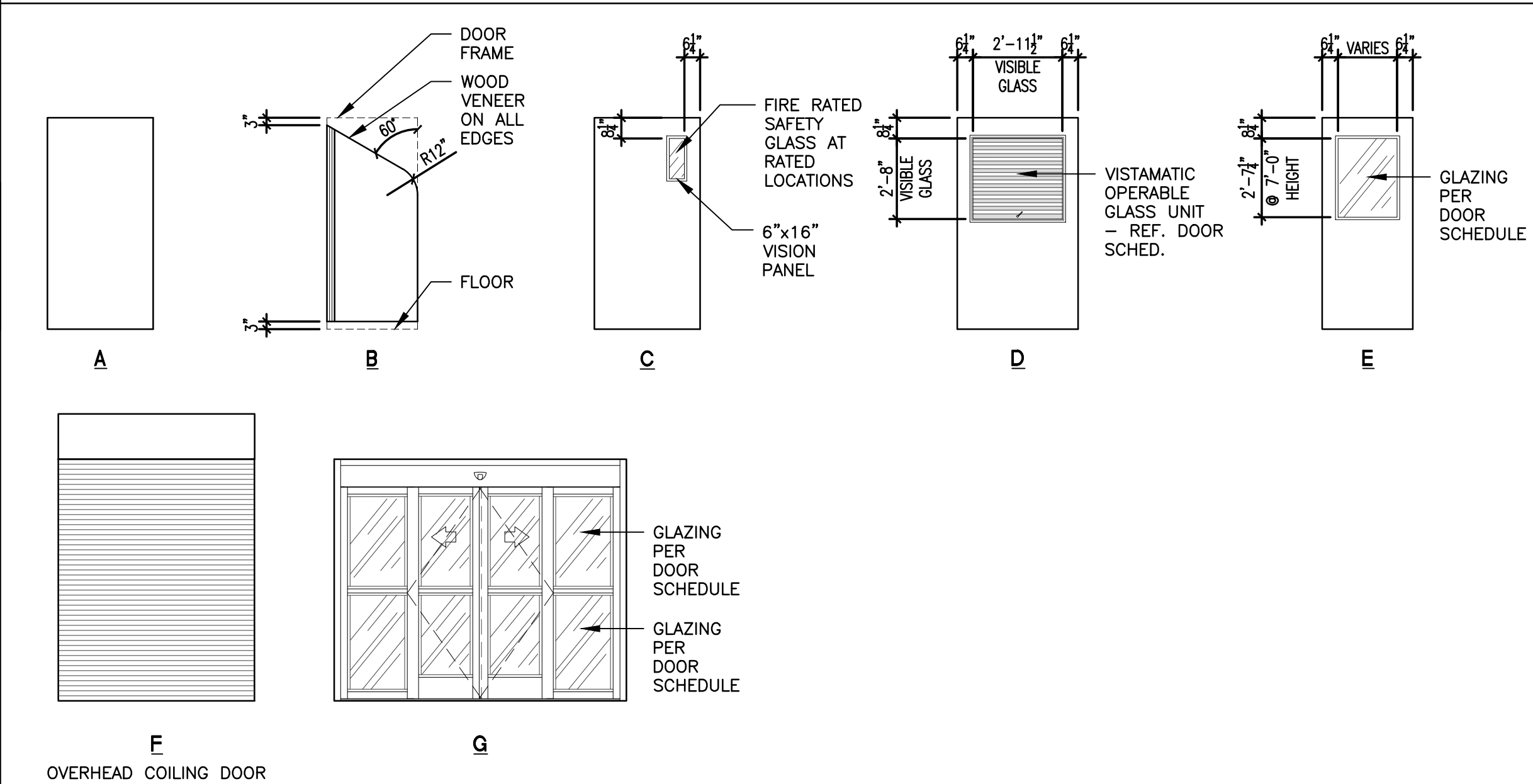
DOOR SCHEDULE - SECOND FLOOR

NO.	SIZE	DOOR	FRAME	DETAILS	THRESHOLD	REMARKS
MAT.	ELEV.	GLASS/RATING	MAT.	ELEV.	RATING	
HEAD	JAMB					
100A	3'-0 1/2" x 7'-0"	WD	A	-	HM F1	4/A-508
100B	PAIR 4'-0 1/2" x 7'-0"	WD	C	FG-1	120	21/A-509
101	3'-6 1/2" x 7'-0"	WD	A	-	HM F1	60
102	3'-0 1/2" x 8'-8"	HM	A	-	HM F2	26/A-509

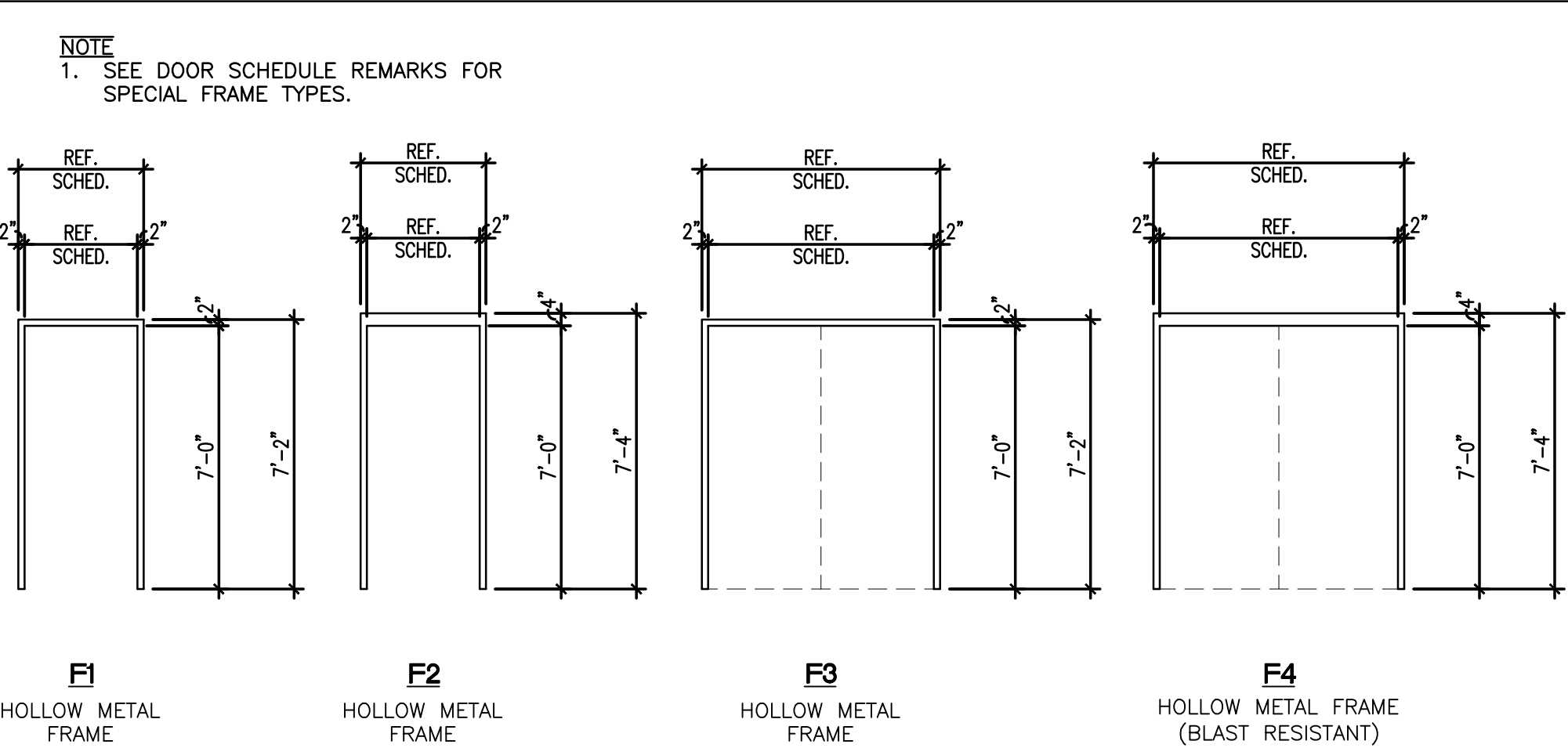
LEGEND

- DOORS**
- HM = HOLLOW METAL
WD = SOLID CORE WOOD
AL = ALUMINUM
- GLAZING**
- EG-1 DOUBLE INSULATED GLAZED - TEMPERED + LAMINATED INSULATED GLAZING WITH INTERNAL MUNTINS.
EG-2 DOUBLE INSULATED GLAZED - TEMPERED + LAMINATED INSULATED GLAZING.
- IG-1 SINGLE GLAZED - TEMPERED.
IG-2 DOUBLE GLAZED - TEMPERED + LAMINATED.
IG-3 TRIPLE GLAZED - TEMPERED + POLYCARBONATE + POLYCARBONATE.
IG-4 TRIPLE GLAZED - TEMPERED + POLYCARBONATE + TEMPERED.
- FG-1 SINGLE GLAZED - LAMINATED CERAMIC.
FG-2 TRIPLE GLAZED - TEMPERED + POLYCARBONATE + LAMINATED CERAMIC.
FG-3 TRIPLE GLAZED - LAMINATED CERAMIC + POLYCARBONATE + TEMPERED.

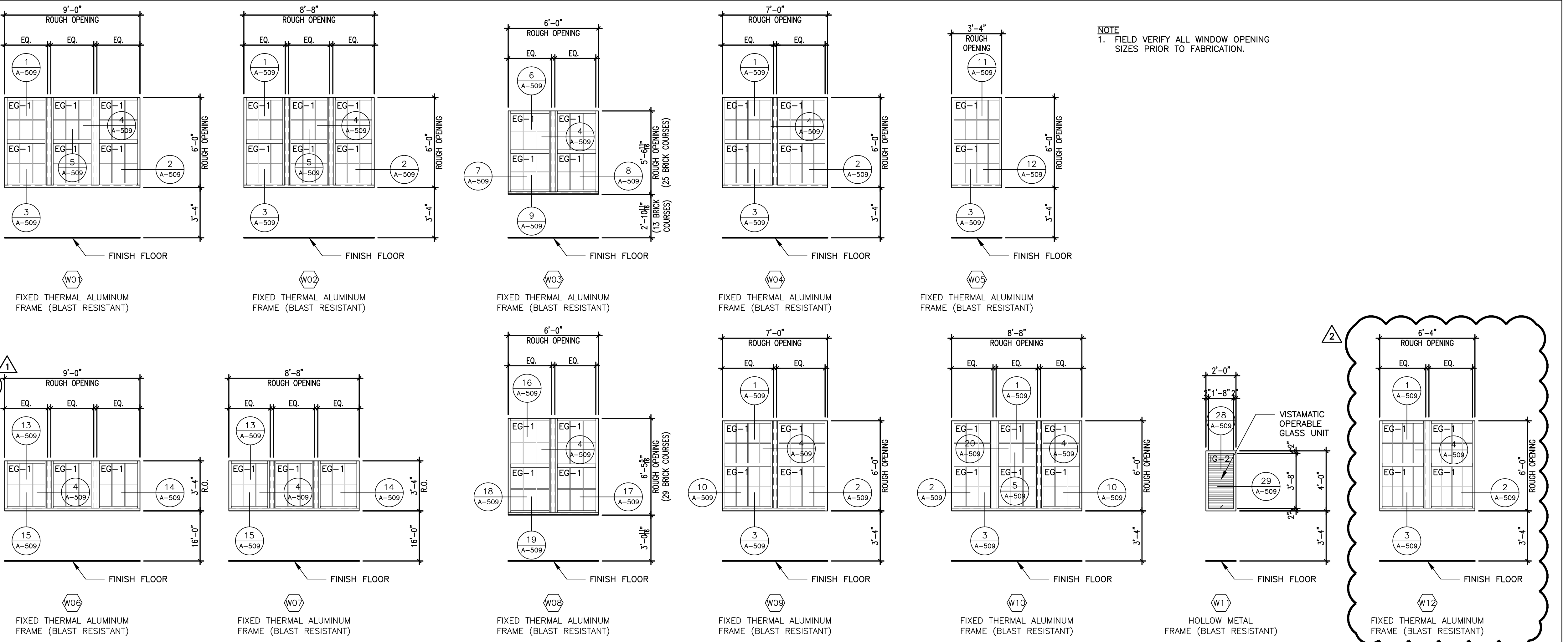
DOOR TYPES



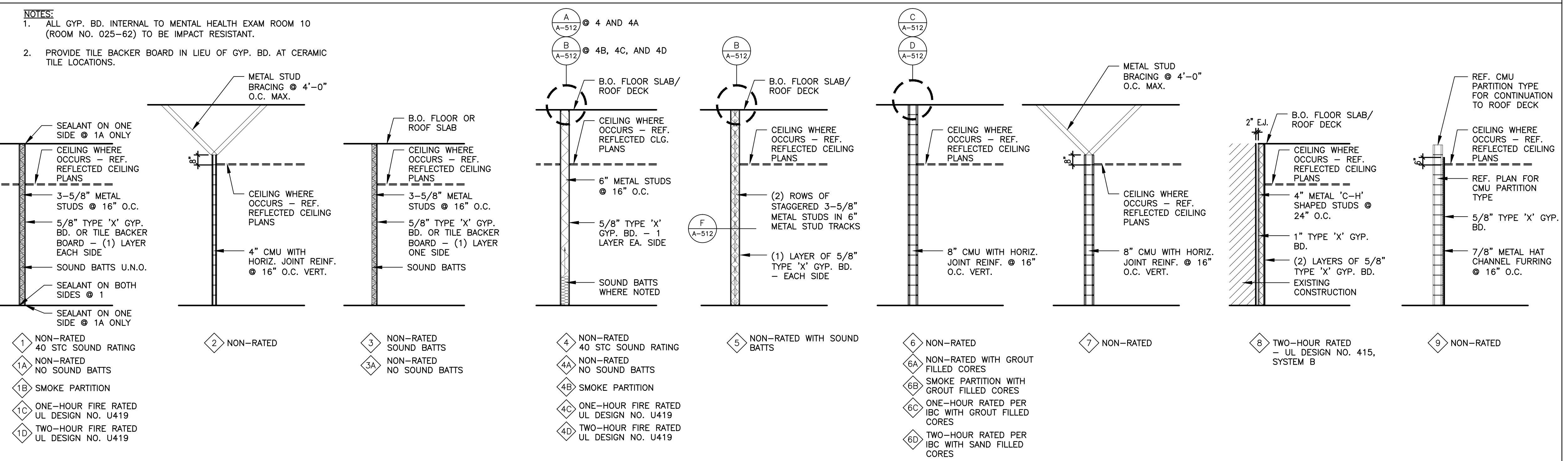
FRAME TYPES



WINDOW TYPES



PARTITION TYPES



Addendum 002	08/25/2017
Addendum 001	08/22/2017
Revisions	

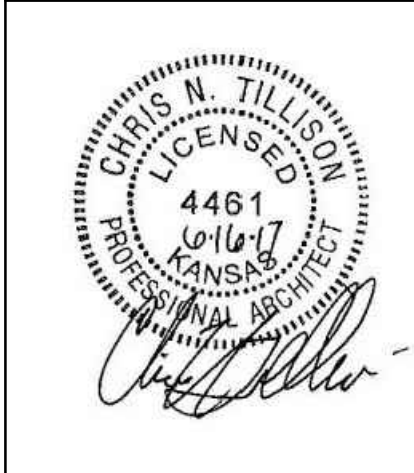


ALLOY ARCHITECTURE

project no. 15206

This drawing and all information herein is the exclusive property of Alloy Architecture and is not to be copied or used in any way without the express written consent of Alloy Architecture. (All drawings, specifications, ideas, designs, and arrangements appearing hereon constitute the original and unpublished work of the Architect)

Copyright © 2017 Alloy Architecture



ARCHITECT/ENGINEERS:

ARCHITECT - ALLOY ARCHITECTURE

CIVIL ENGINEER - BAUGHMAN CO.

MECHANICAL ENGINEER - MECHANICAL CONSULTANTS INC.

ELECTRICAL ENGINEER - BASIS CONSULTING ENGINEERS

STRUCTURAL ENGINEER - DUDLEY WILLIAMS AND ASSOCIATES P.A.

Drawing Title

DOOR SCHEDULE, DOOR TYPES, FRAME TYPES, WINDOW TYPES, AND PARTITION TYPES

Project Title

EMERGENCY DEPARTMENT ADDITION

Location

5500 EAST KELLOGG WICHITA, KANSAS

Date

JUNE 16, 2017

Checked

CNT, RDS

Drawn

GRS

Project Number

589-700

Building Number

62

Drawing Number

62-A-601

Dwg. 53 of 108

Office of Construction and Facilities Management

Department of Veterans Affairs