

VA SOUTHERN NEVADA HEALTHCARE SYSTEM

Finish 3rd Floor, Administration Building 6

North Las Vegas, NV

Project No. 593-17-101

SITE LOCATION



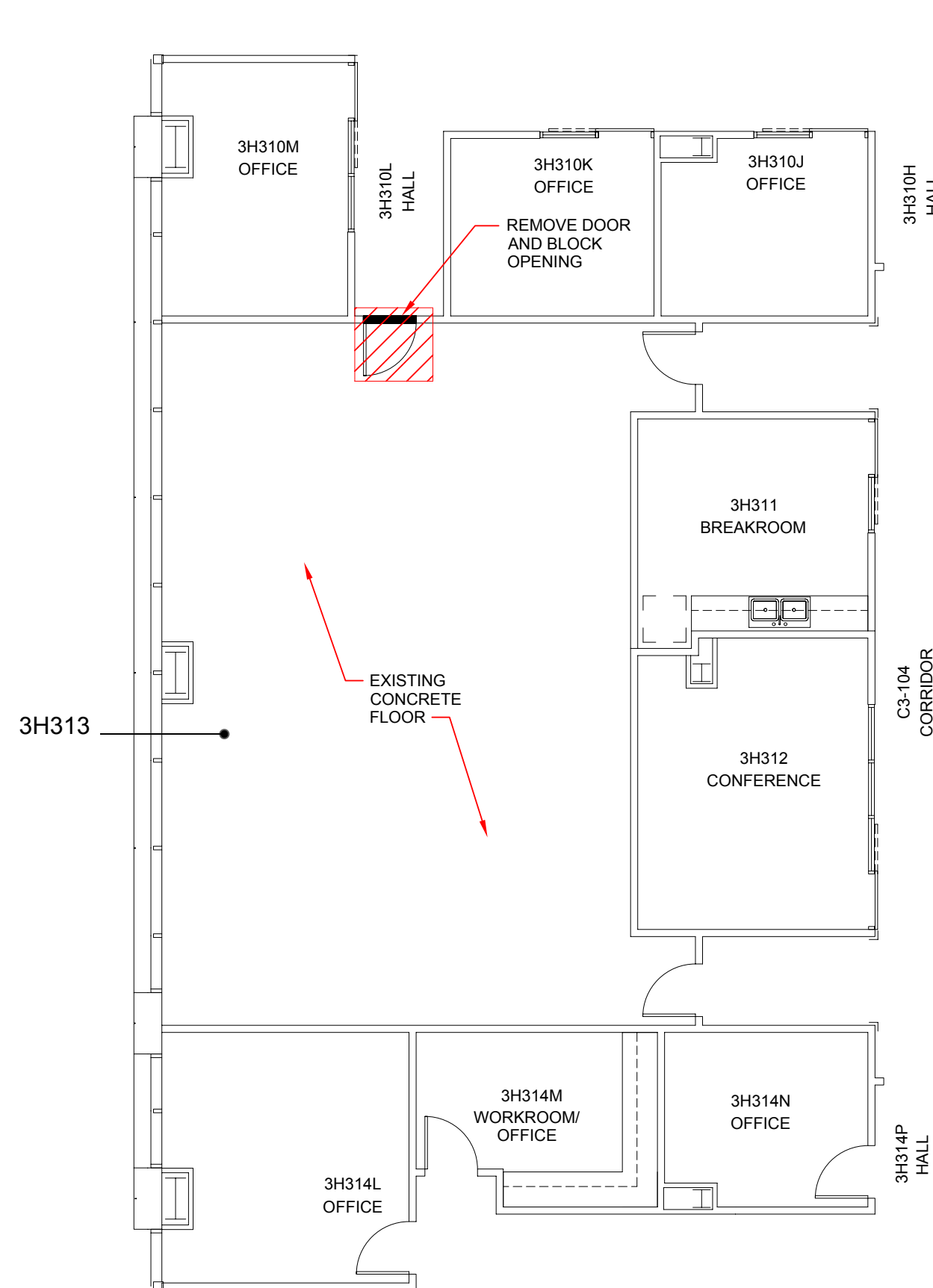
PROJECT LOCATION



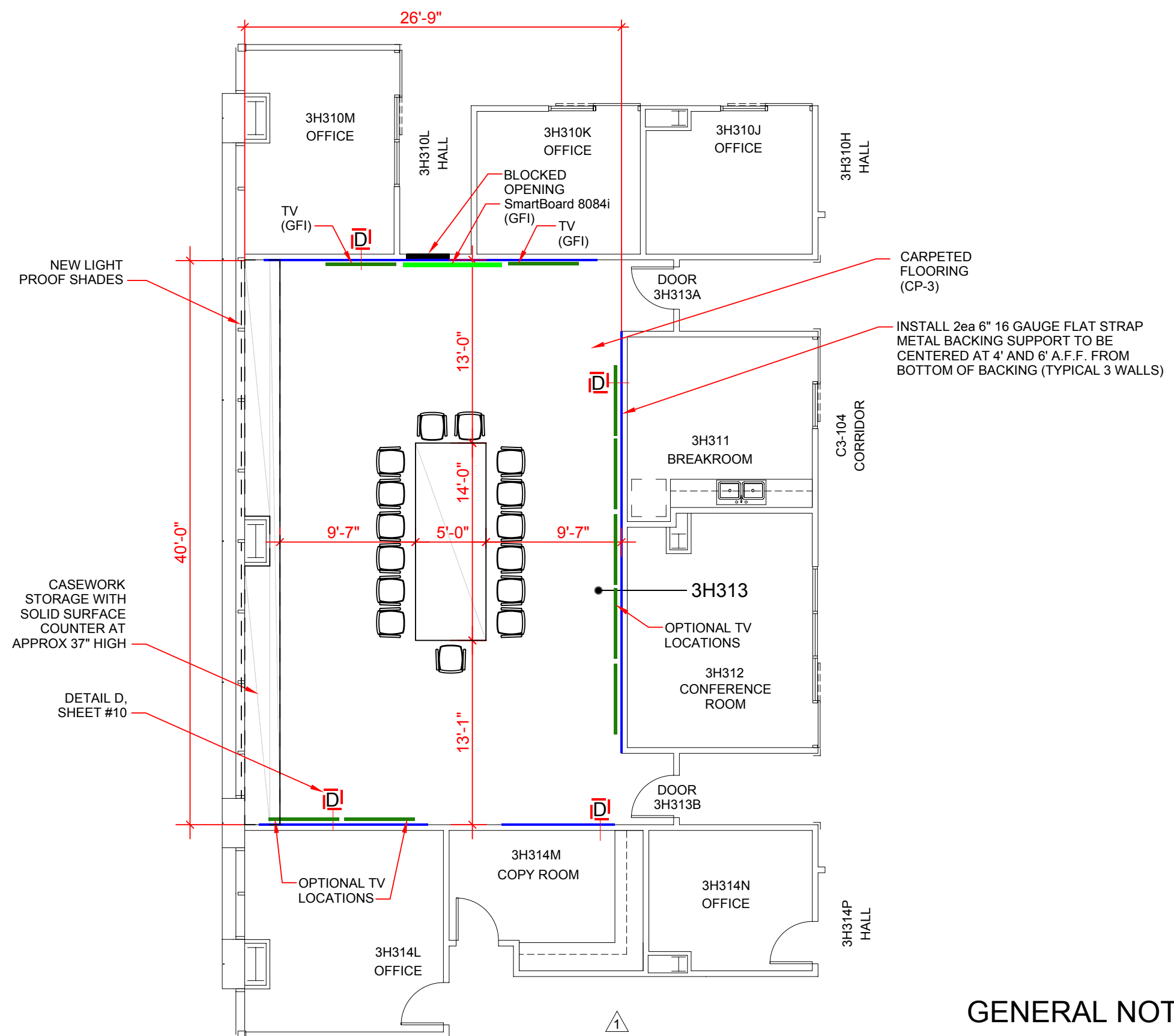
SHEET INDEX

SHEET NO.	SHEET NAME
01	COVER SHEET
02	3H313 CONF. RM/EMERGENCY COMM. CENTER FLOOR PLAN
03	3H313 CONF. RM/EMERGENCY COMM. CENTER REFLECTED CEILING PLAN
04	3H313 CONF. RM/EMERGENCY COMM. CENTER HVAC PLAN
05	3H313 CONF. RM/EMERGENCY COMM. CENTER ELECTRICAL/DATA PLAN
06	3H319 MEDICAL MEDIA FLOOR PLAN
07	3H319 MEDICAL MEDIA REFLECTED CEILING PLAN
08	3H319 MEDICAL MEDIA HVAC PLAN
09	3H319 MEDICAL MEDIA ELECTRICAL/DATA PLAN
10	WALL DETAILS
11	OVERALL ELECTRICAL/DATA PLAN
12	ELECTRICAL/DATA DETAILS
13	ELECTRICAL PANEL SCHEDULE

CONSTRUCTION DOCUMENTS
BUILDING IS FULLY SPRINKLERED



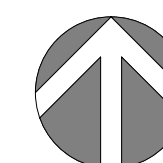
EXISTING/DEMO PLAN



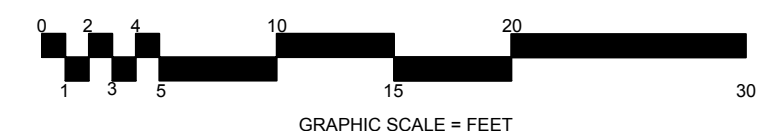
NEW CONFERENCE ROOM/
EMERGENCY COMMAND CENTER

GENERAL NOTES:

1. PROTECT ADJACENT SURFACES AND ITEMS TO REMAIN IN PLACE DURING CONSTRUCTION.
2. SUBMIT CASEWORK STORAGE SHOP DRAWINGS FOR VA APPROVAL PRIOR TO FABRICATION.
3. FURNITURE, SMART BOARD AND TVs ARE GOVERNMENT FURNISH ITEMS (GFI). FOR ILLUSTRATION PURPOSES ONLY.

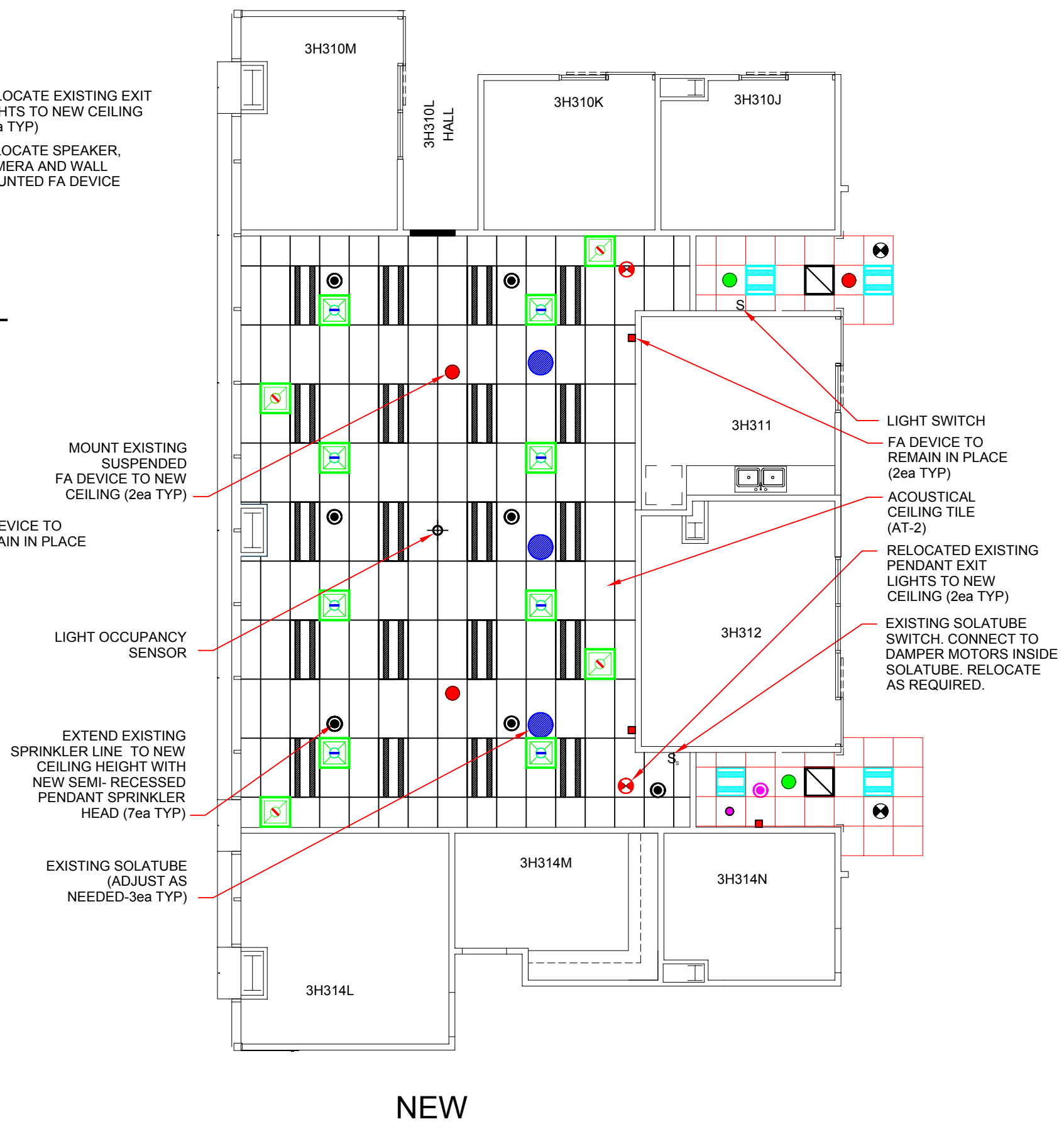
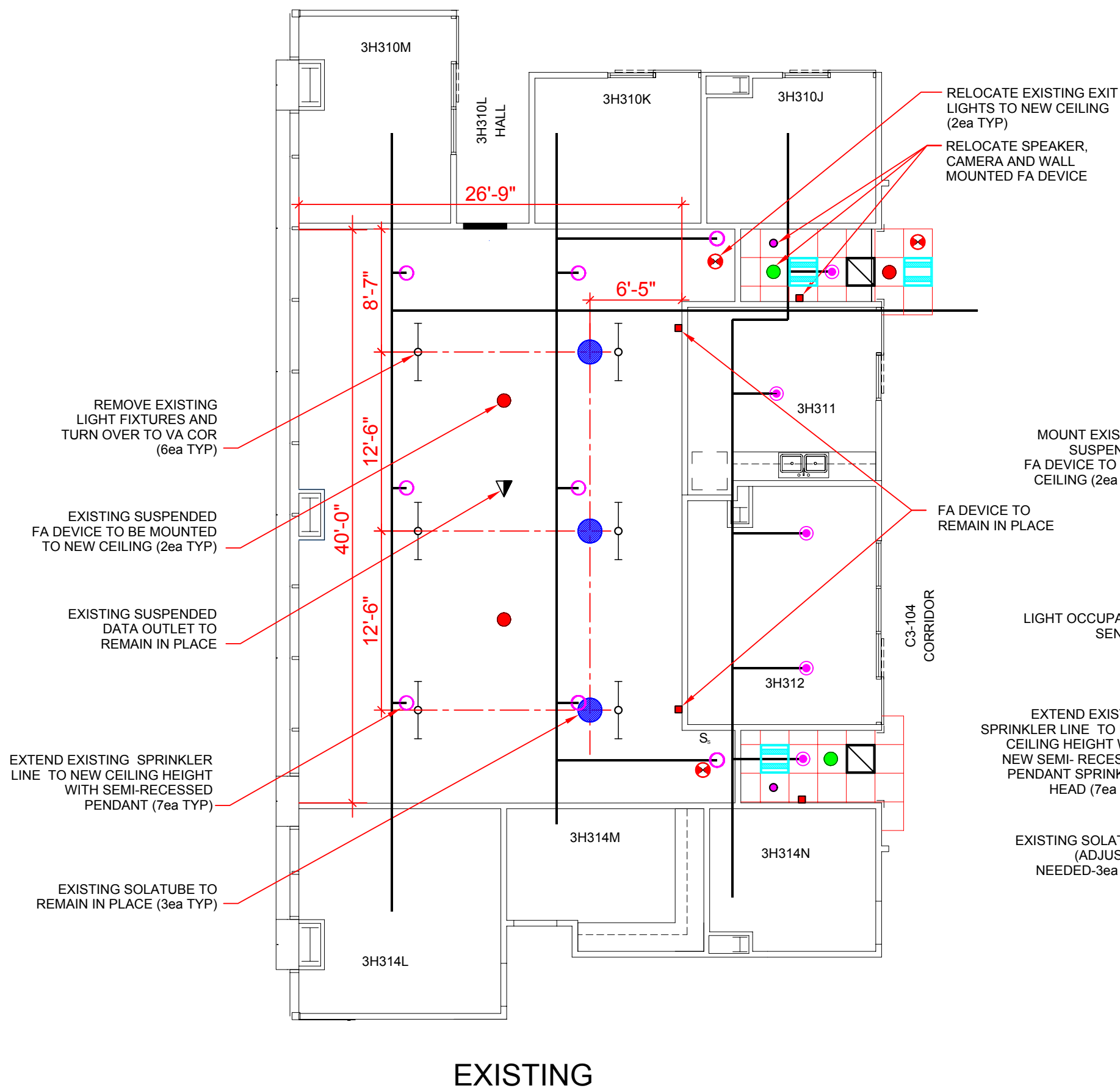


NORTH



GRAPHIC SCALE = FEET

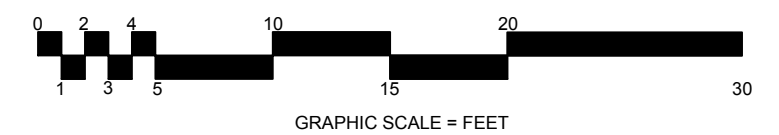
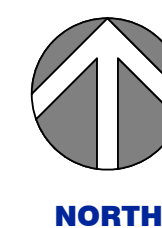
CONSTRUCTION DOCUMENTS
BUILDING IS FULLY SPRINKLERED



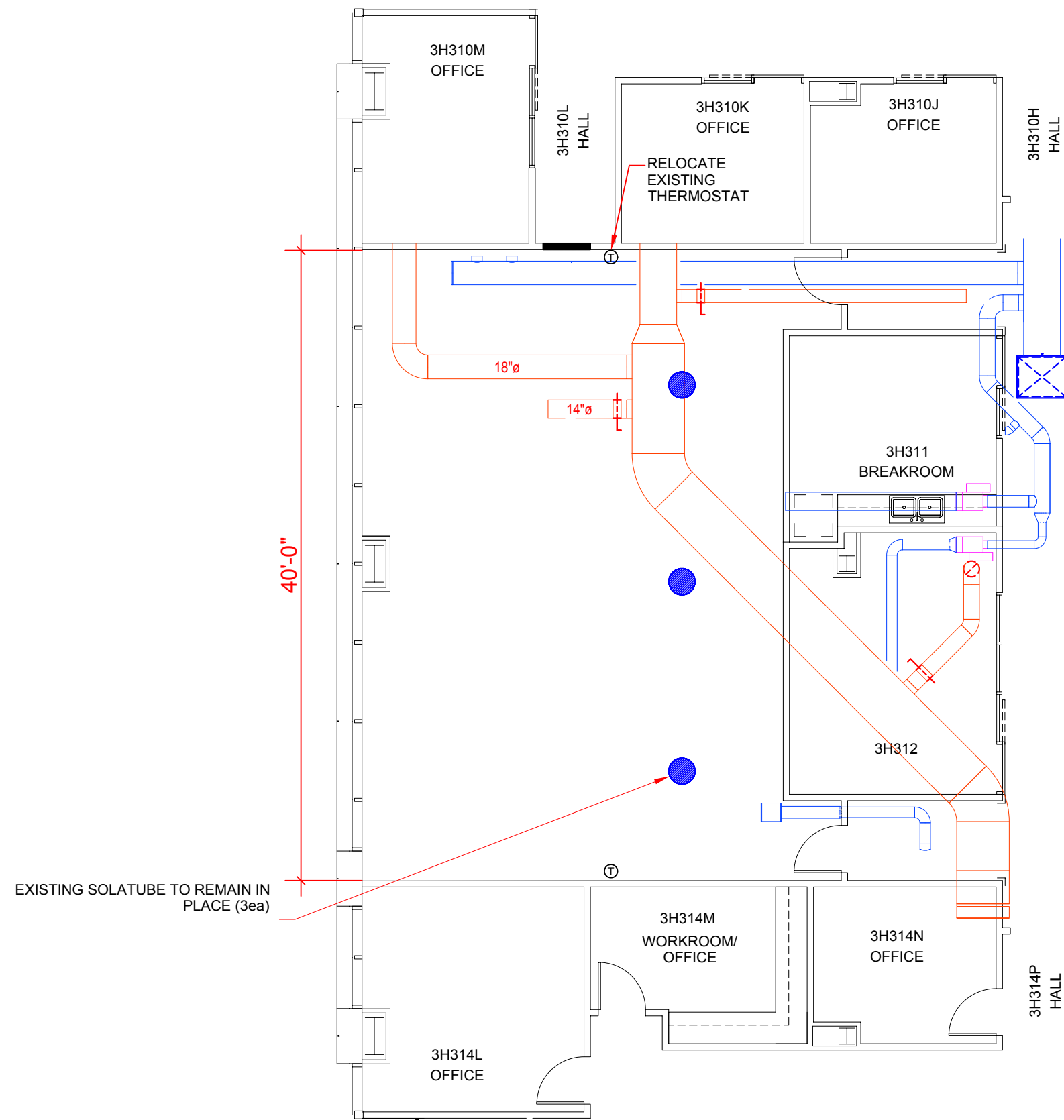
- ### LEGEND
- NEW SUPPLY
 - NEW RETURN
 - EXISTING REGISTER
 - NEW LED LIGHT FIXTURE
 - EXISTING LIGHT FIXTURE
 - EXISTING SOLATUBE
 - EXISTING LIGHT FIXTURE
 - NEW FIRE SPRINKLER - PENDANT
 - EXISTING FIRE SPRINKLER - PENDANT
 - EXISTING FIRE SPRINKLER - UPRIGHT
 - EXISTING DATA OUTLET
 - EXISTING CEILING MOUNTED CAMERA
 - EXISTING CEILING MOUNTED SPEAKER
 - EXISTING WALL MOUNTED FA (FIRE ALARM) DEVICE
 - EXISTING FA (FIRE ALARM) DEVICE
 - NEW LIGHT SWITCH
 - EXISTING SOLATUBE SWITCH
 - EXISTING RELOCATED EXIT LIGHT
 - EXISTING EXIT LIGHT

GENERAL NOTES:

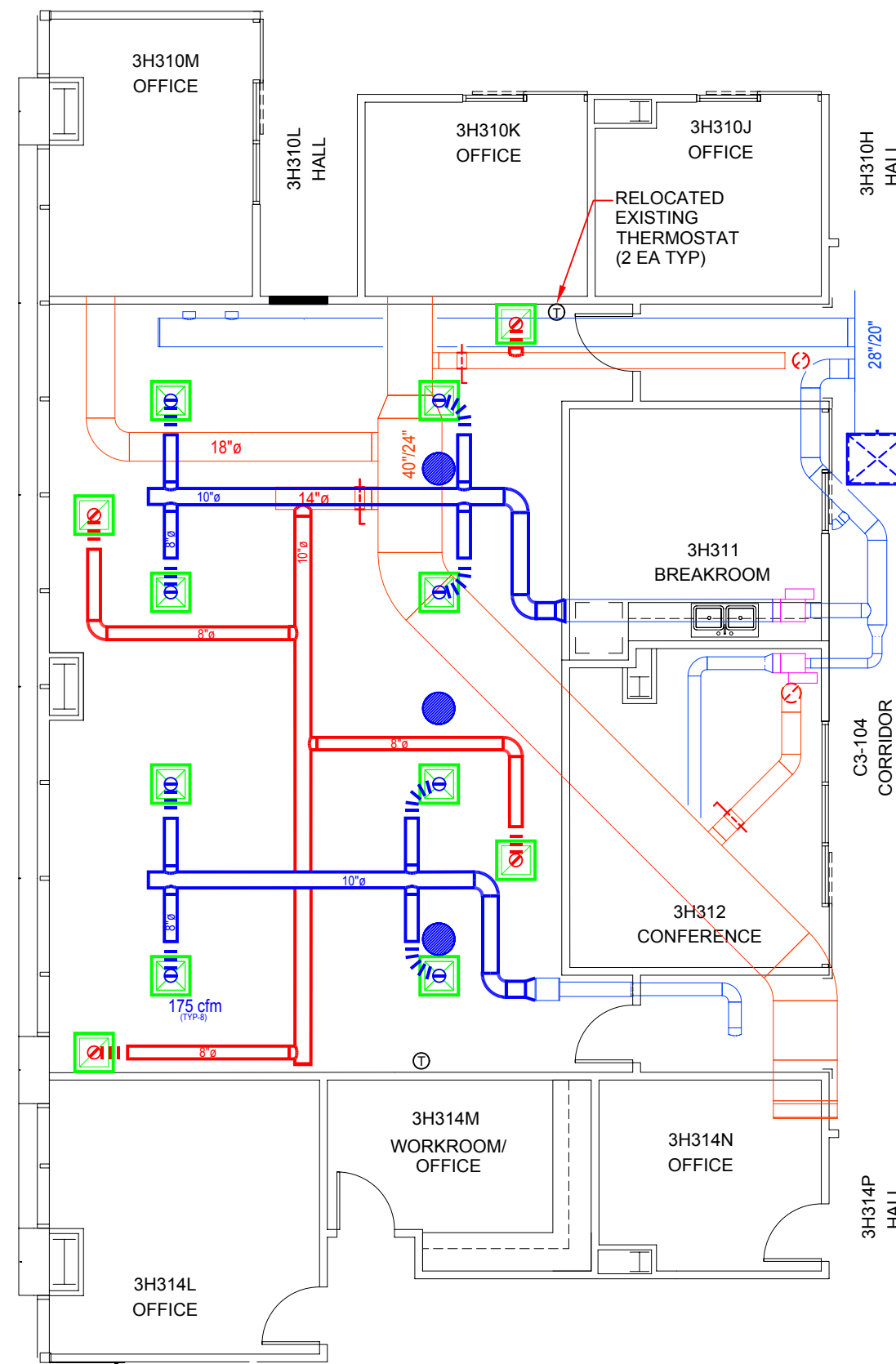
1. PROTECT ADJACENT SURFACES AND ITEMS TO REMAIN IN PLACE DURING CONSTRUCTION.
2. NEW RECESSED PENDANT FIRE SPRINKLER SHALL BE PER CURRENT NFPA REQUIREMENTS. SUBMIT FIRE SPRINKLER PLAN WITH FIRE PROTECTION ENGINEER STAMP FOR VA APPROVAL.
3. INSTALL NEW SOLATUBE DAYLIGHT DIMMERS WITH ACCESSORIES AND CONNECT TO EXISTING WALL DPDT MOMENTARY SWITCH.



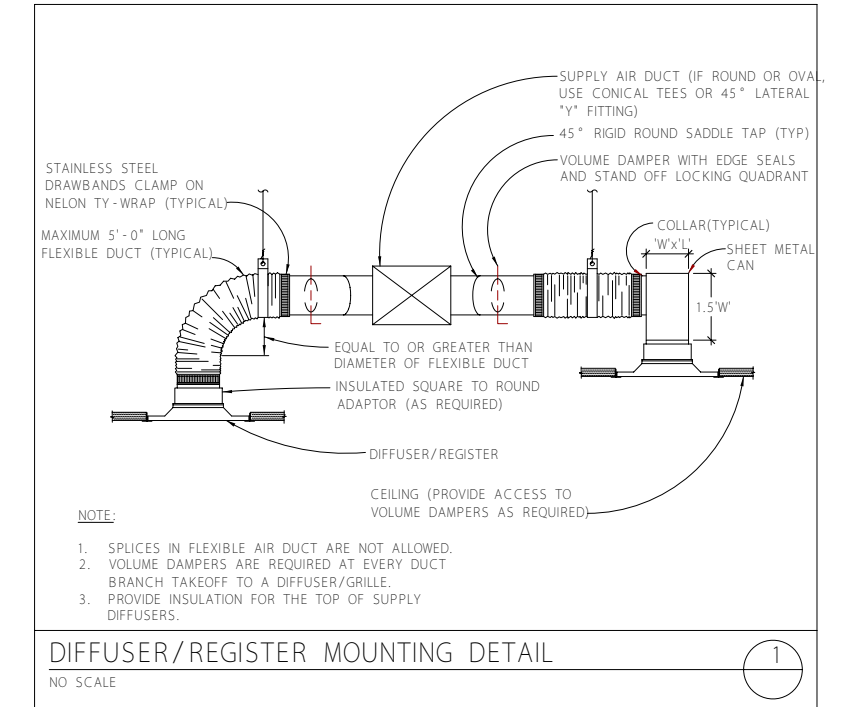
CONSTRUCTION DOCUMENTS
BUILDING IS FULLY SPRINKLERED



EXISTING



PROPOSED

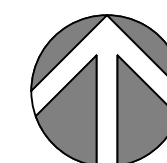


LEGEND

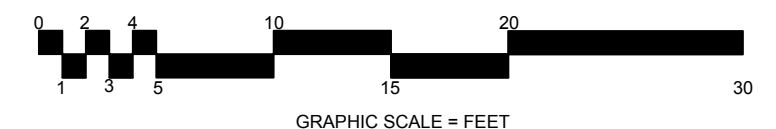
- NEW SUPPLY REGISTER
- NEW RETURN REGISTER
- EXISTING DUCTWORK
- NEW DUCTWORK
- EXISTING THERMOSTAT
- EXISTING SOLATUBE

GENERAL NOTES:

1. PROTECT ADJACENT SURFACES AND ITEMS TO REMAIN IN PLACE DURING CONSTRUCTION.
2. TEST AND BALANCE NEW HVAC SUPPLY AND RETURN AIR.



NORTH



CONSTRUCTION DOCUMENTS
BUILDING IS FULLY SPRINKLERED

Revisions:	Date
65% Design	3/23/2017
95% Design	4/4/2017
100% Design	4/12/2017
Revision	8/24/2017

Drawing Title
HVAC Plan Room 3H313

Scale:
1/8" = 1'0" (For C size 18X24 only)

Approved: Project Director

Project Title
**Administration Building
FINISH 3RD FLOOR
ROOMS 3H313 & 3H319**

Location
North Las Vegas, NV

Date
08/24/2017

Checked
JS

Drawn
BB

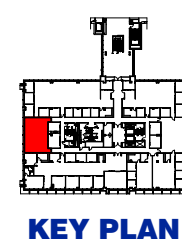
Project Number
593-17-101

Building Number
6

Drawing Number
Dwg. 4 of 13

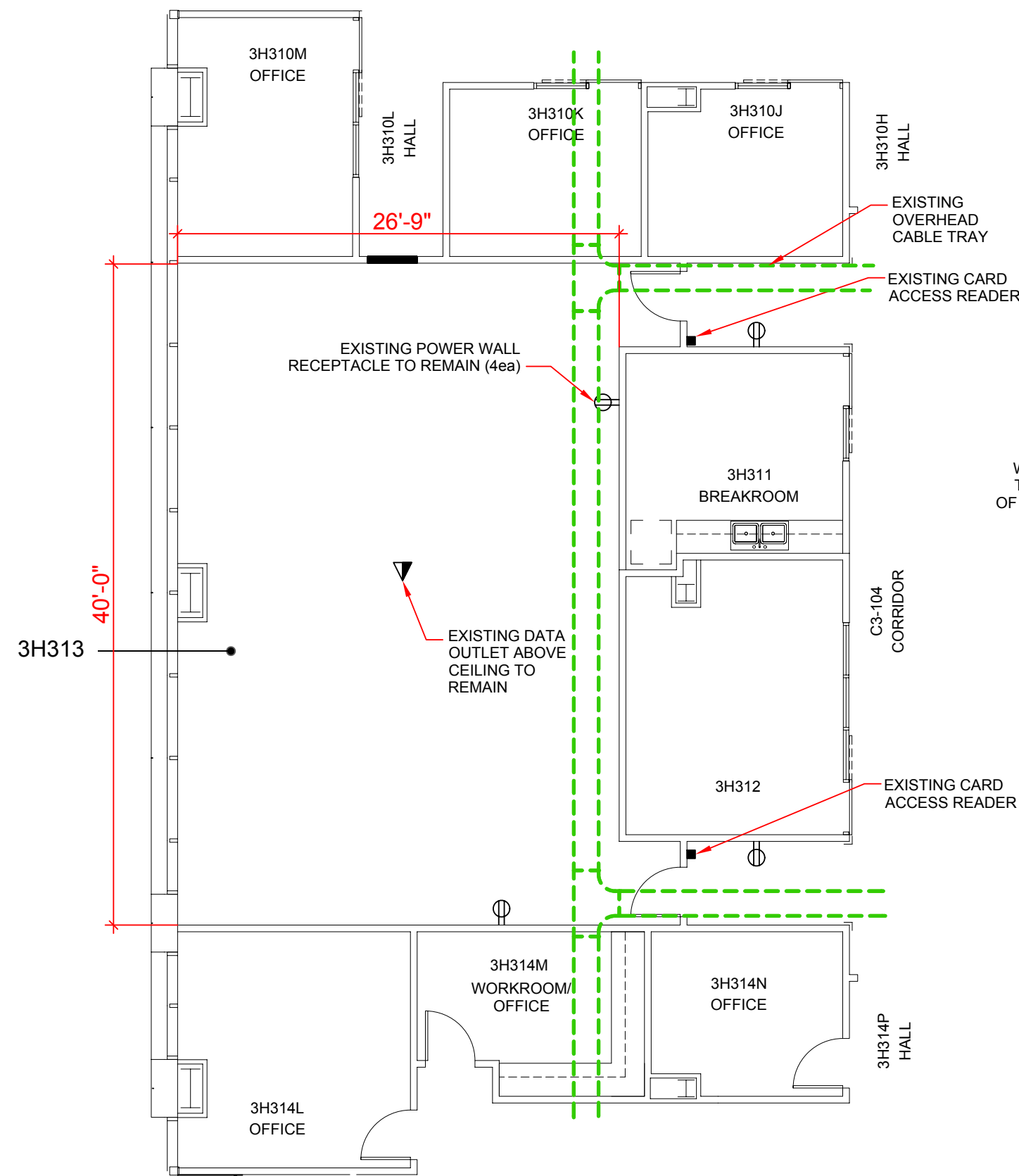
Engineering Service

VA | U.S. Department
of Veterans Affairs

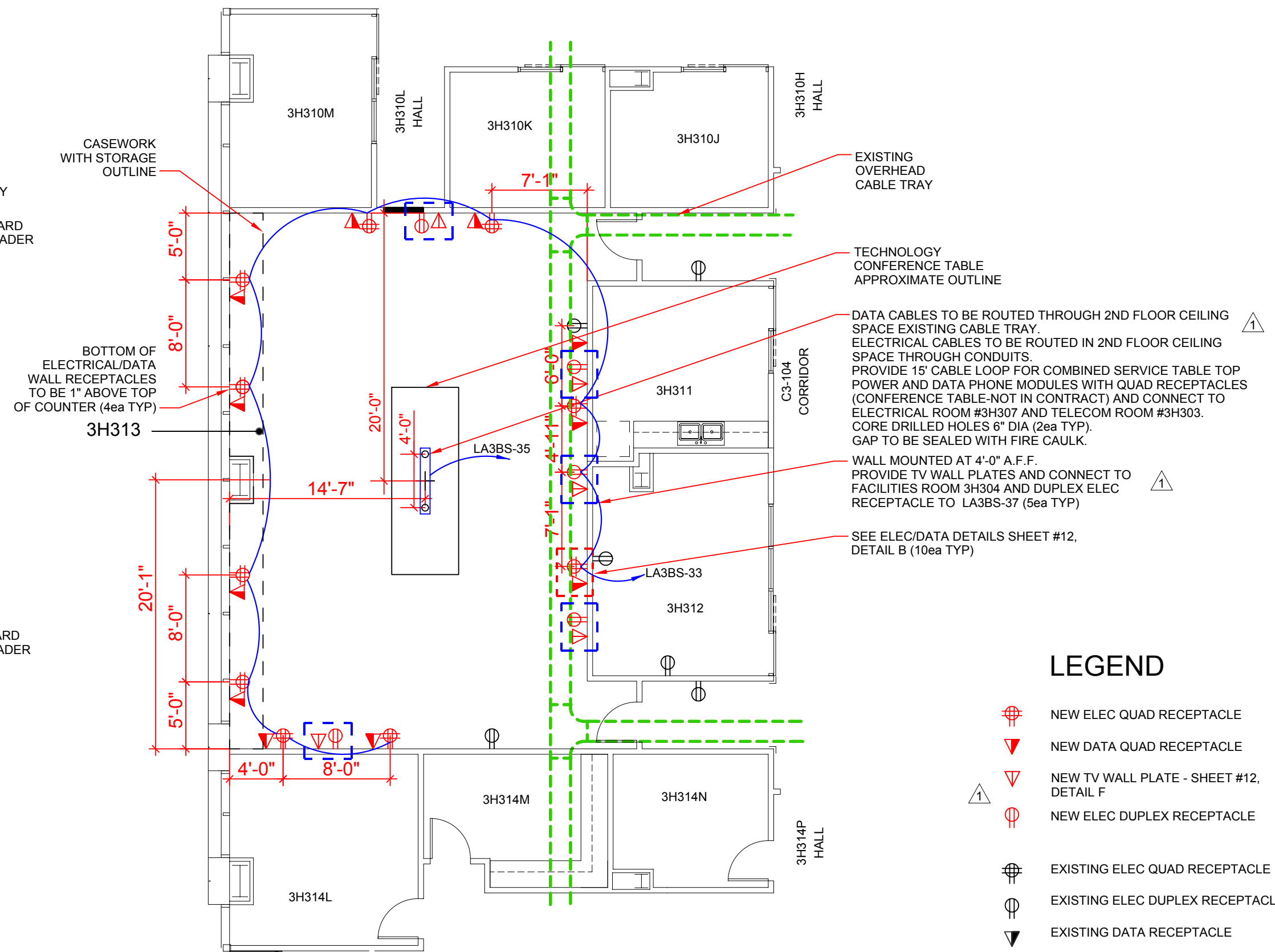


KEY PLAN





EXISTING



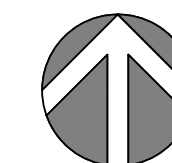
NEW

LEGEND

- NEW ELEC QUAD RECEPTACLE
- NEW DATA QUAD RECEPTACLE
- NEW TV WALL PLATE - SHEET #12, DETAIL F
- NEW ELEC DUPLEX RECEPTACLE
- EXISTING ELEC QUAD RECEPTACLE
- EXISTING ELEC DUPLEX RECEPTACLE
- EXISTING DATA RECEPTACLE
- EXISTING CARD ACCESS READER

GENERAL NOTE(S):

1. PROTECT ADJACENT SURFACES AND ITEMS TO REMAIN IN PLACE DURING CONSTRUCTION.



NORTH

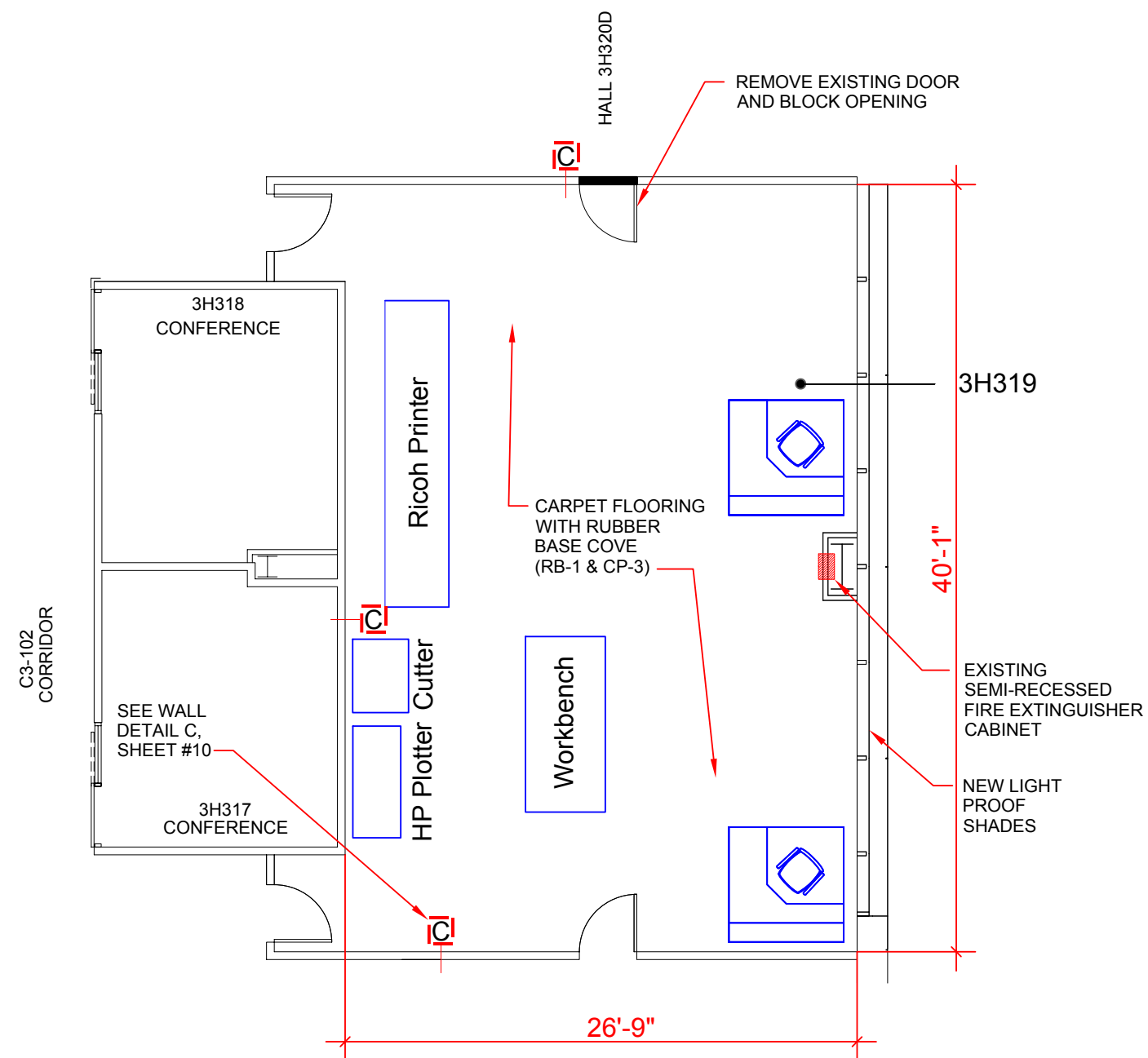


CONSTRUCTION DOCUMENTS
BUILDING IS FULLY SPRINKLERED

Revisions:	Date
65% Design	3/23/2017
95% Design	4/4/2017
100% Design	4/12/2017
Revision	6/24/2017

Drawing Title	Electrical & Data Plans Room 3H313
Scale:	1/8" = 1'0" (For C size 18X24 only)
Approved: Project Director	

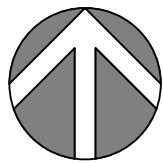
Project Title	Administration Building FINISH 3RD FLOOR ROOMS 3H313 & 3H319	Project Number	593-17-101
Location	North Las Vegas, NV	Building Number	6
Date	08/24/2017	Checked	JS
		Drawn	BB
		Dwg	5 of 13



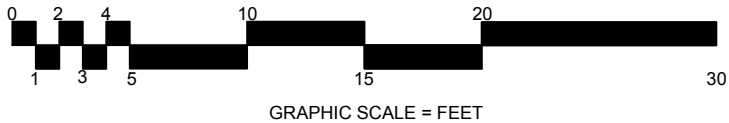
FLOOR PLAN

GENERAL NOTES:

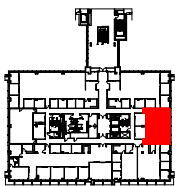
- 1. PROTECT ADJACENT SURFACES AND ITEMS TO REMAIN IN PLACE DURING CONSTRUCTION.
- 2. ALL FURNITURE AND EQUIPMENT ARE GOVERNMENT FURNISHED AND INSTALLED ITEMS.
- 3. RICOH PRINTER TO BE MOVED BY VA.



NORTH



CONSTRUCTION DOCUMENTS
BUILDING IS FULLY SPRINKLERED



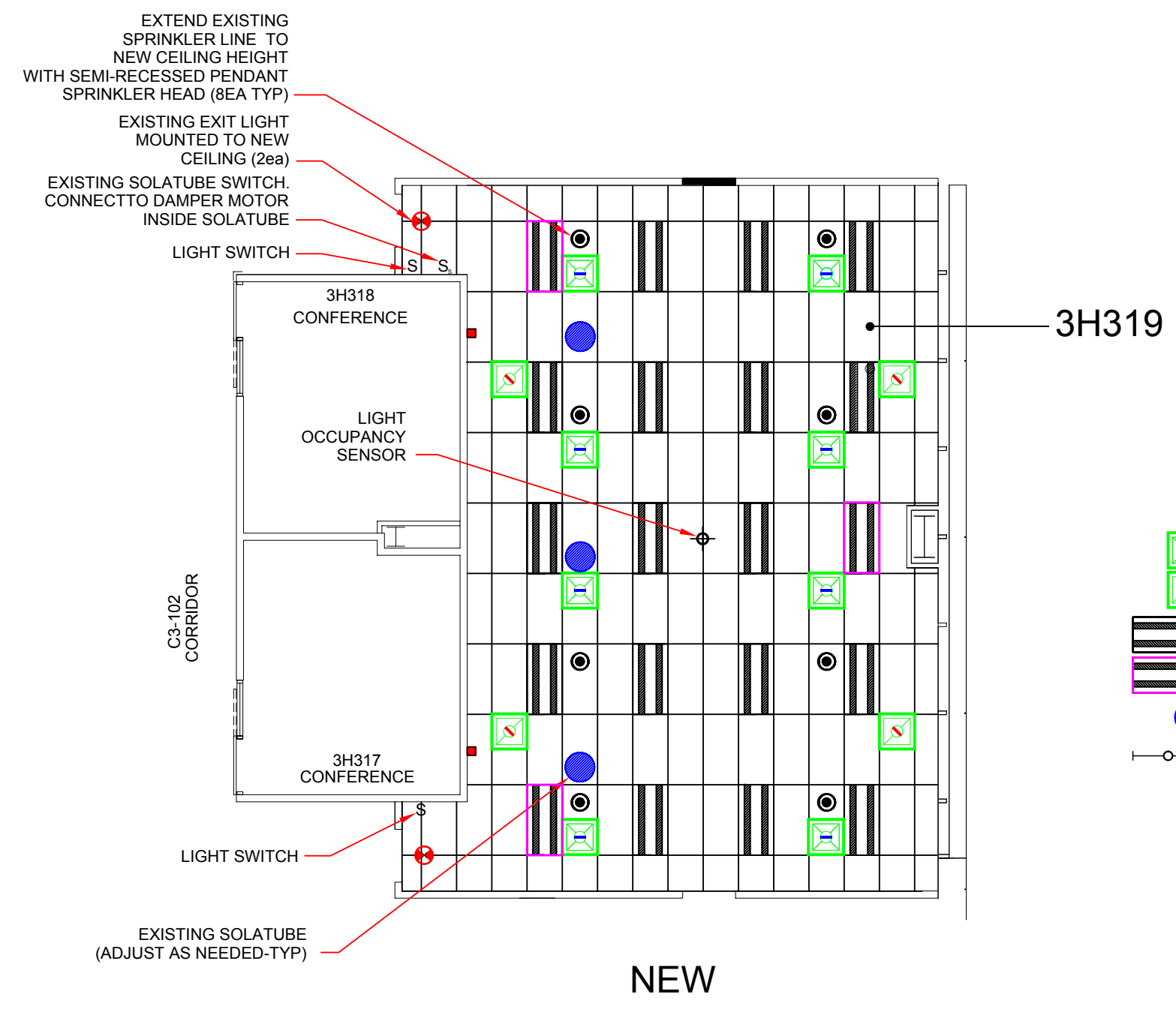
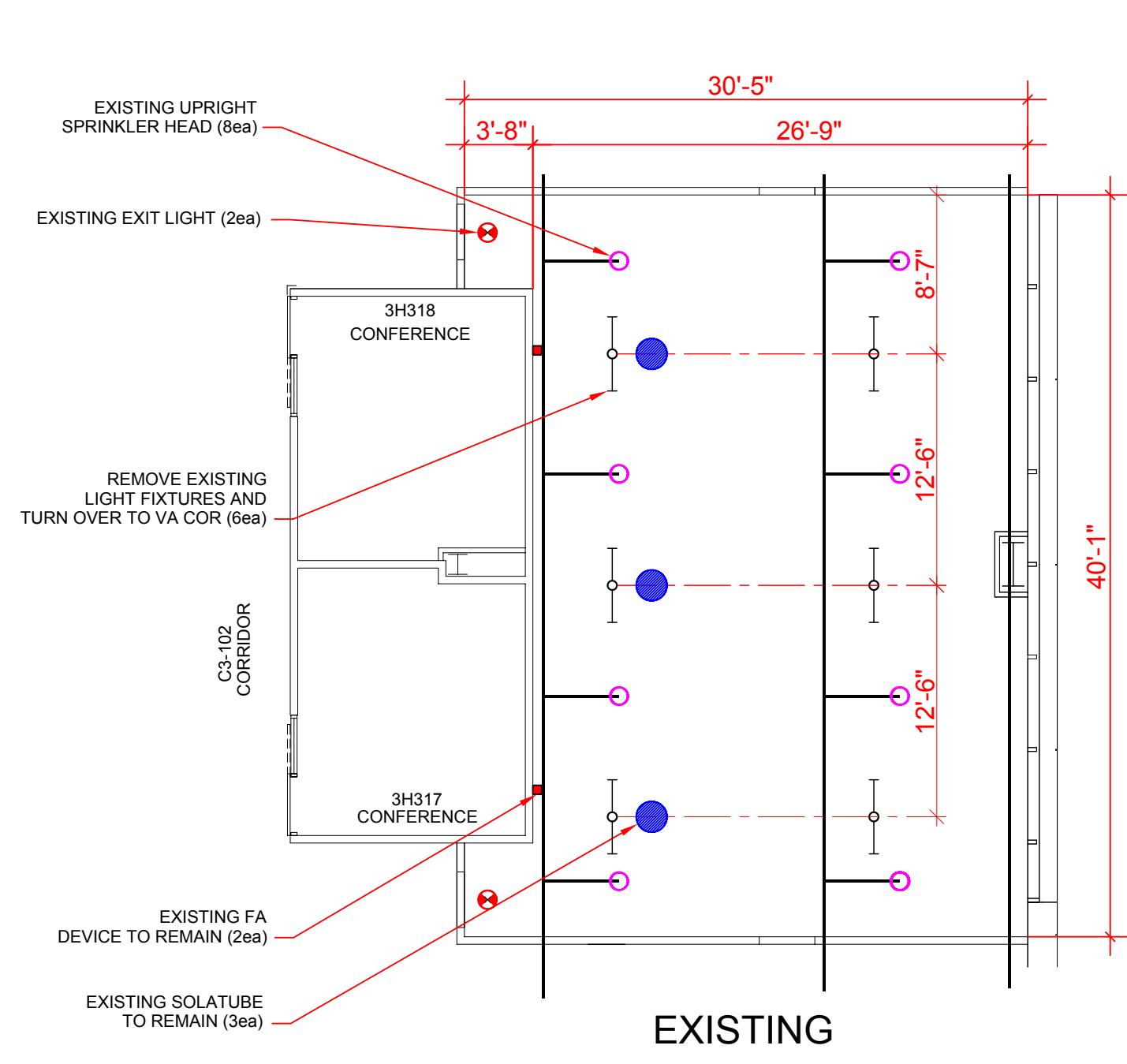
KEY PLAN

Revisions:	Date
65% Design	3/23/2017
95% Design	4/4/2017
100% Design	4/12/2017
Revision	6/24/2017

Drawing Title
Medical Media Floor Plan Room 3H319
Scale: 1/8" = 1'0" (For C size 18X24 only)
Approved: Project Director

Project Title
Administration Building FINISH 3RD FLOOR ROOMS 3H313 & 3H319
Location
North Las Vegas, NV
Date
08/24/2017
Checked
JS
Drawn
BB

Project Number
593-17-101
Building Number
6
Drawing Number
Dwg. 6 of 13

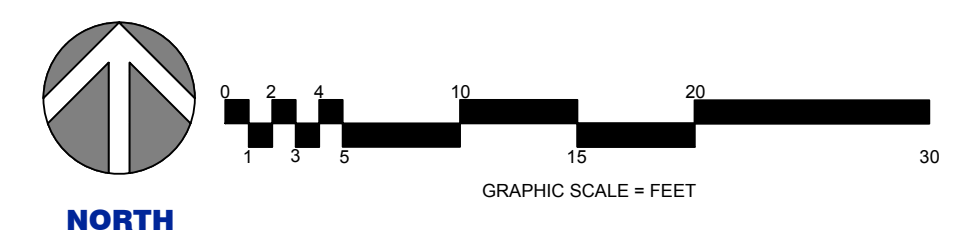


LEGEND

- NEW SUPPLY REGISTER
- NEW RETURN REGISTER
- NEW LED LIGHT FIXTURE
- NEW LED LIGHT FIXTURE (EGRESS LIGHT-CONNECT TO EXIST EXIT LIGHT CIRCUIT)
- EXISTING SOLATUBE
- EXISTING SUSPENDED LIGHT FIXTURE
- EXISTING FIRE SPRINKLER - UPRIGHT
- NEW FIRE SPRINKLER - PENDANT
- EXISTING FA (FIRE ALARM) DEVICE
- EXISTING EXIT LIGHT

GENERAL NOTES:

1. PROTECT ADJACENT SURFACES AND ITEMS TO REMAIN IN PLACE DURING CONSTRUCTION.
2. NEW RECESSED PENDANT FIRE SPRINKLER SHALL BE PER CURRENT NFPA REQUIREMENTS. SUBMIT FIRE SPRINKLER PLAN WITH FIRE PROTECTION ENGINEER STAMP FOR VA APPROVAL.
3. INSTALL NEW SOLATUBE DAYLIGHT DIMMERS WITH ACCESSORIES AND CONNECT TO EXISTING WALL DPDT MOMENTARY SWITCH.

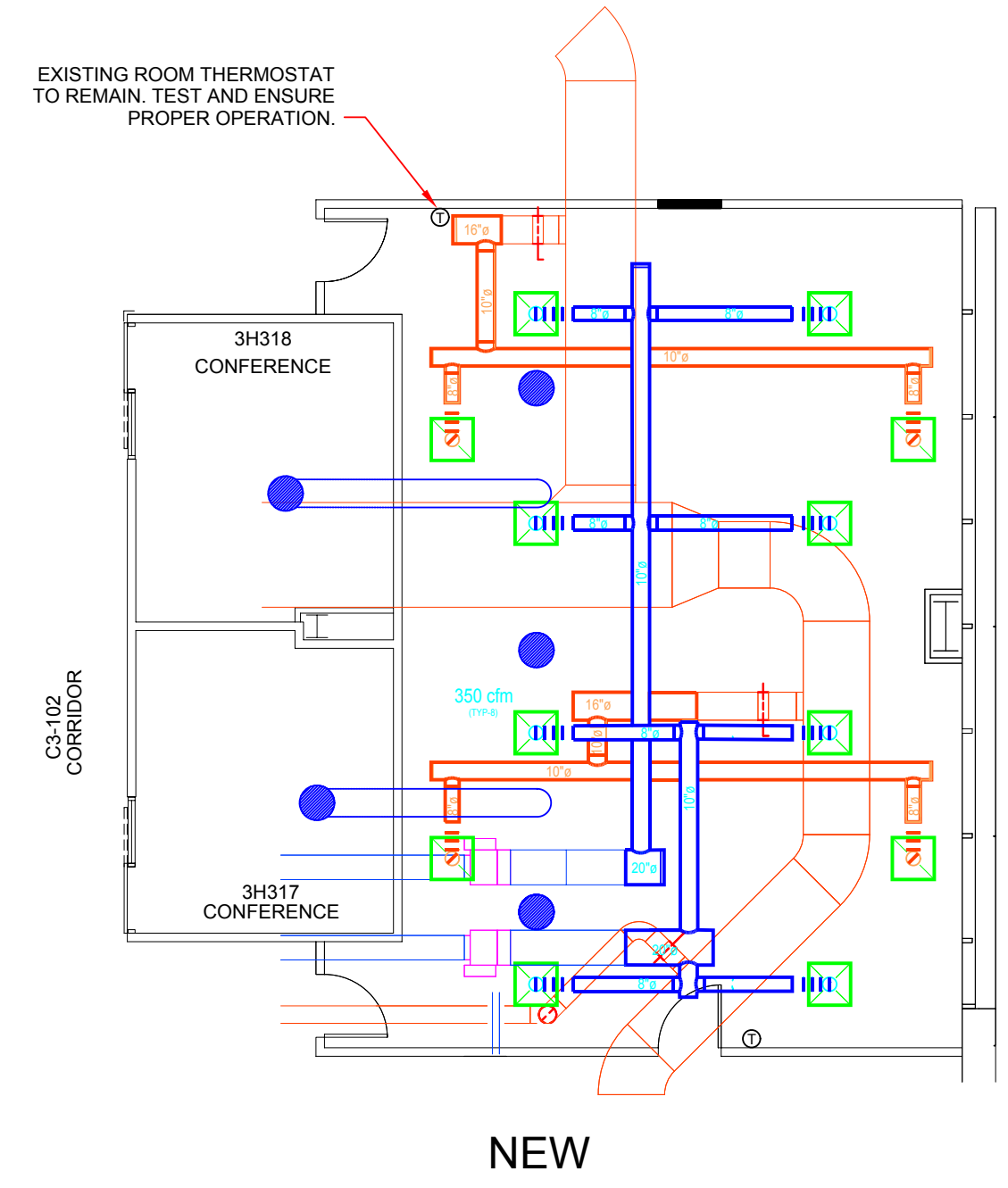
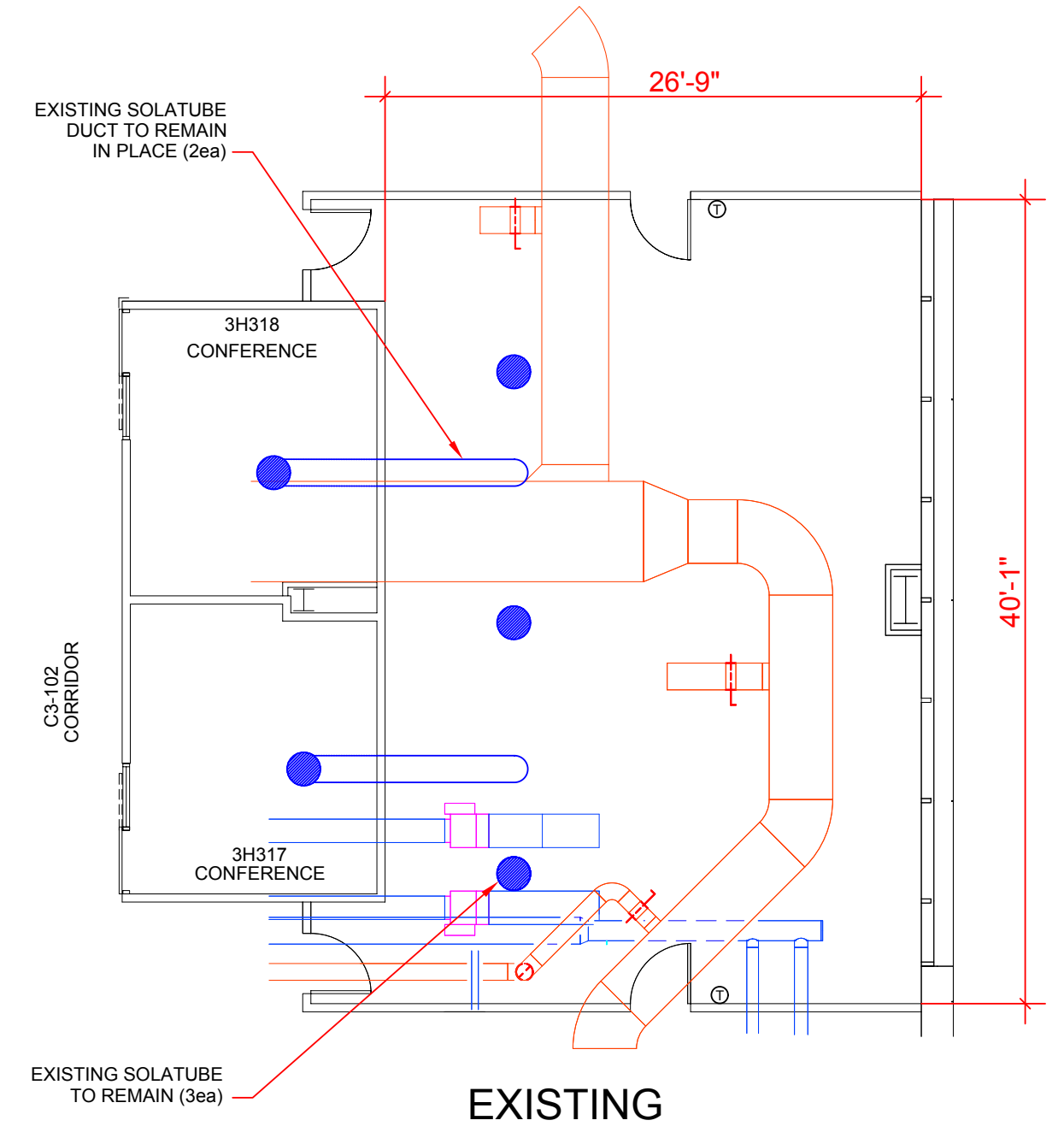
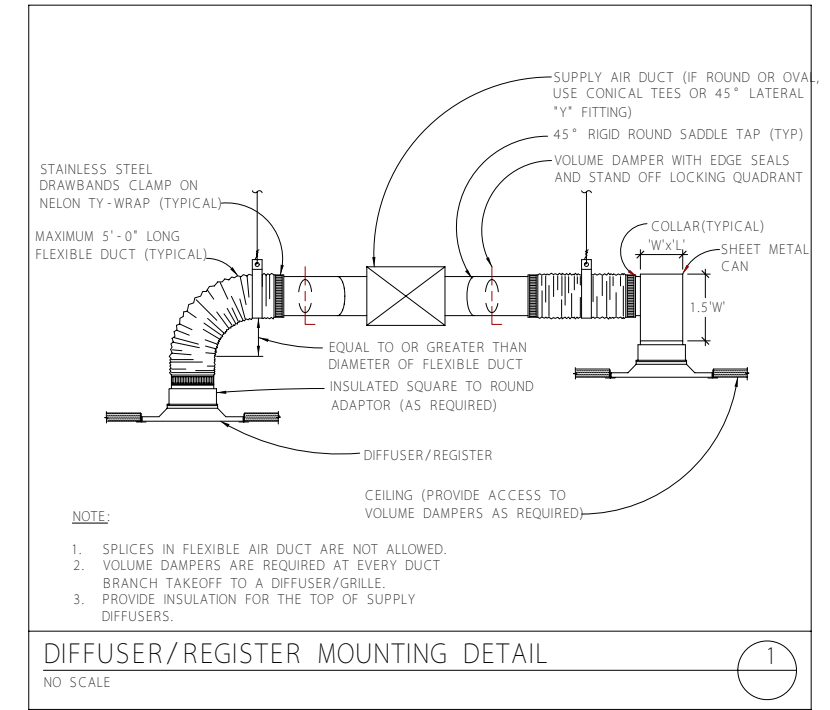


CONSTRUCTION DOCUMENTS
BUILDING IS FULLY SPRINKLERED

Revisions:	Date
65% Design	3/23/2017
95% Design	4/4/2017
100% Design	4/12/2017
Revision	6/24/2017

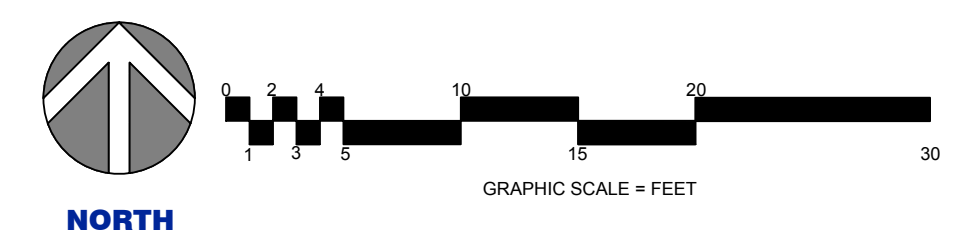
Drawing Title
Fire Protection/Reflected Ceiling
Plan Room 3H319
Scale: 1/8" = 1'0" (For C size 18X24 only)
Approved: Project Director

Project Title			Project Number	
Administration Building FINISH 3RD FLOOR ROOMS 3H313 & 3H319			593-17-101	
			Building Number	
			6	
Location			Drawing Number	
North Las Vegas, NV				
Date	Checked	Drawn		
08/24/2017	JS	BB	Dwg 7 of 13	



- LEGEND**
- NEW SUPPLY REGISTER
 - NEW RETURN REGISTER
 - EXISTING DUCTWORK
 - NEW DUCTWORK
 - EXISTING THERMOSTAT
 - EXISTING SOLATUBE

- GENERAL NOTES:**
1. PROTECT ADJACENT SURFACES AND ITEMS TO REMAIN IN PLACE DURING CONSTRUCTION.
 2. TEST AND BALANCE NEW HVAC SUPPLY AND RETURN AIR.



CONSTRUCTION DOCUMENTS
BUILDING IS FULLY SPRINKLERED

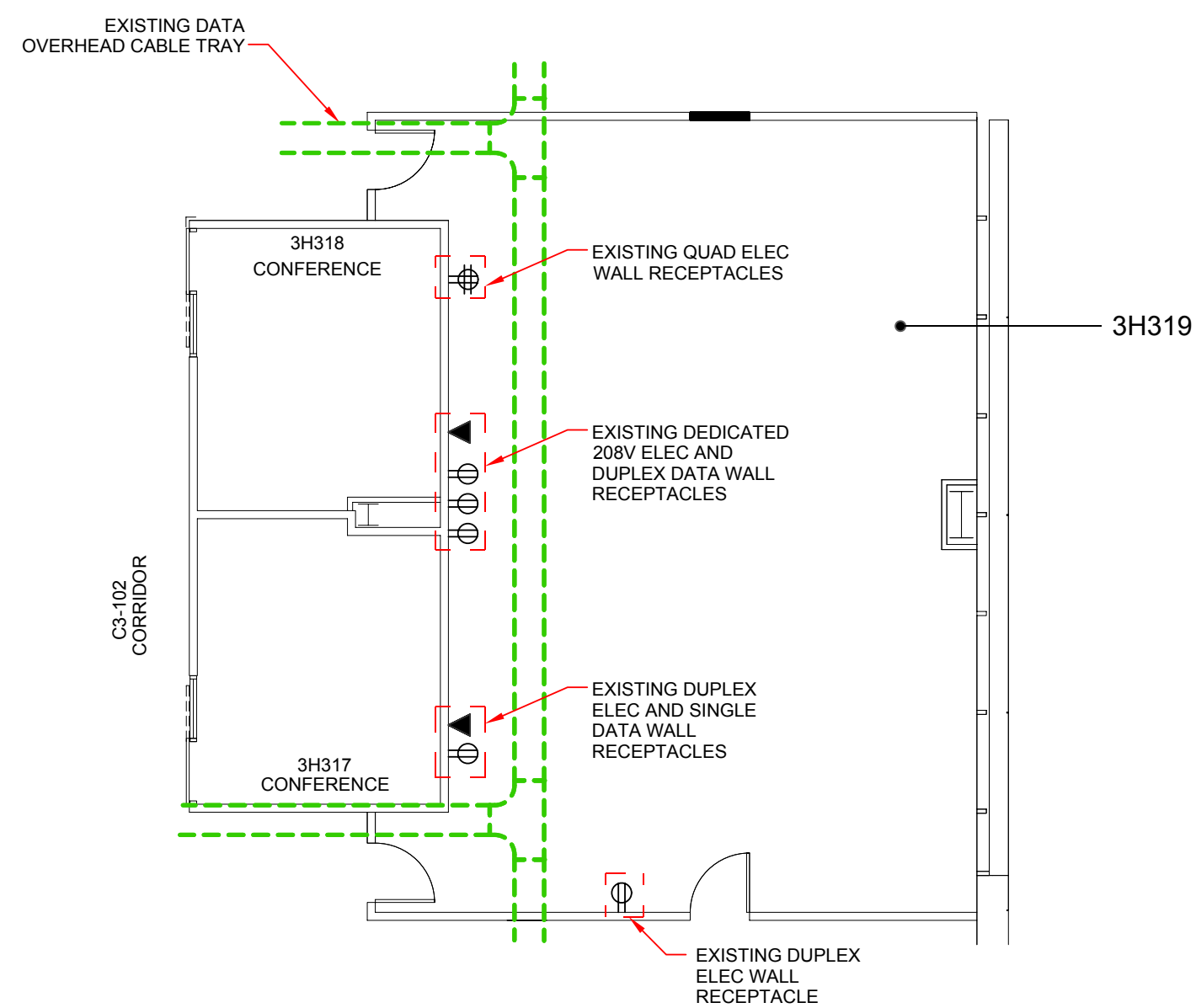
Revisions:	Date
65% Design	3/23/2017
95% Design	4/4/2017
100% Design	4/12/2017
Revision	6/24/2017

Drawing Title
HVAC Plan Room 3H319

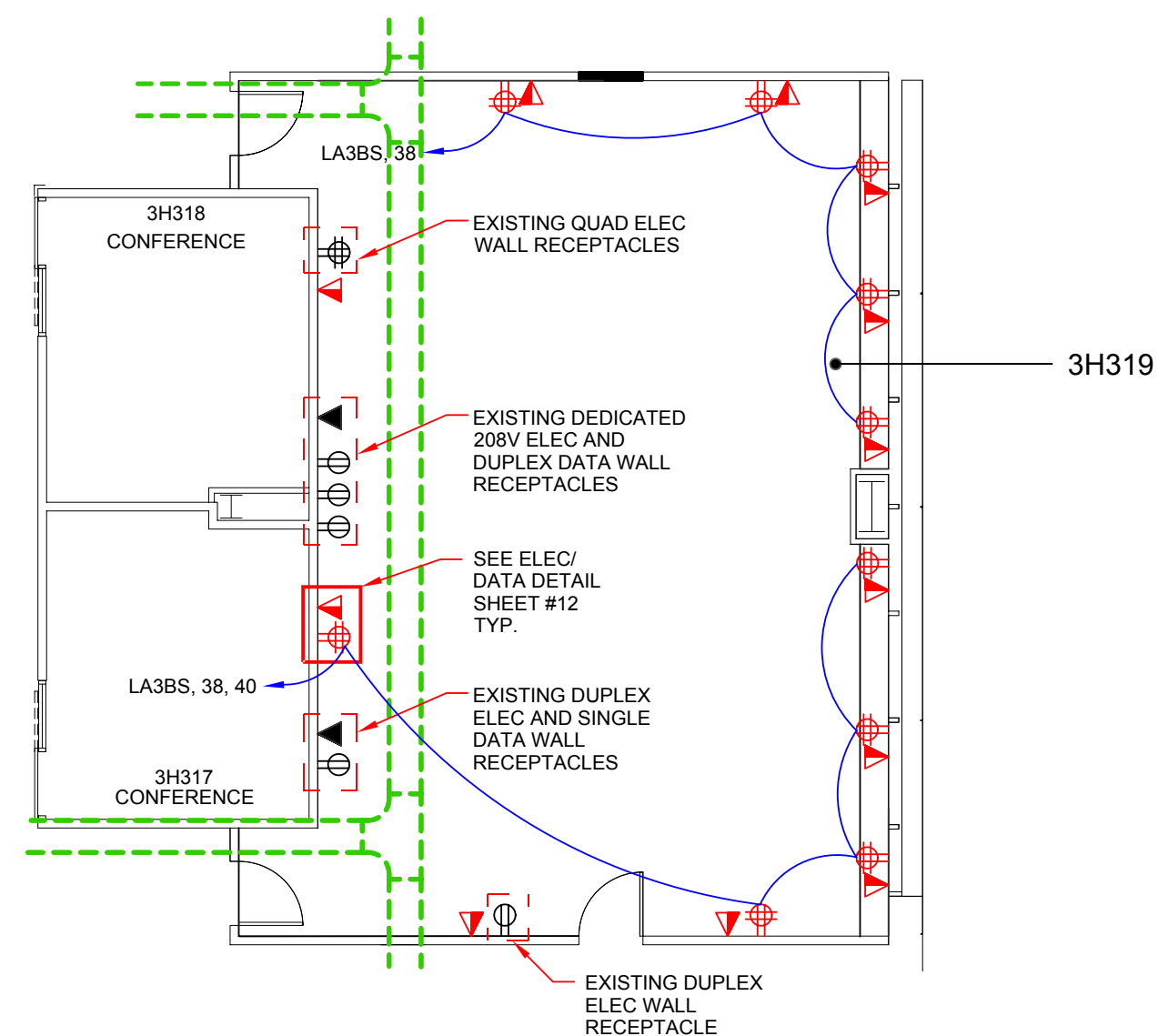
Scale:
1/8" = 1'0" (For C size 18X24 only)

Approved: Project Director

Project Title Administration Building FINISH 3RD FLOOR ROOMS 3H313 & 3H319			Project Number 593-17-101
Location North Las Vegas, NV			Building Number 6
Date 08/24/2017	Checked JS	Drawn BB	Drawing Number 8 of 13








EXISTING



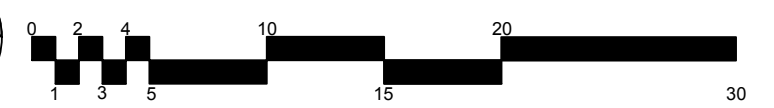
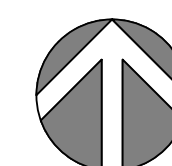
NEW

LEGEND

-  NEW ELEC QUAD RECEPTACLE
-  NEW DATA QUAD RECEPTACLE
-  EXISTING ELEC QUAD RECEPTACLE
-  EXISTING ELEC DUPLEX RECEPTACLE
-  EXISTING DATA RECEPTACLE

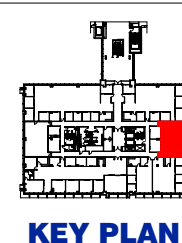
GENERAL NOTES:

1. PROTECT ADJACENT SURFACES AND ITEMS TO REMAIN IN PLACE DURING CONSTRUCTION.



CONSTRUCTION DOCUMENTS
BUILDING IS FULLY SPRINKLERED

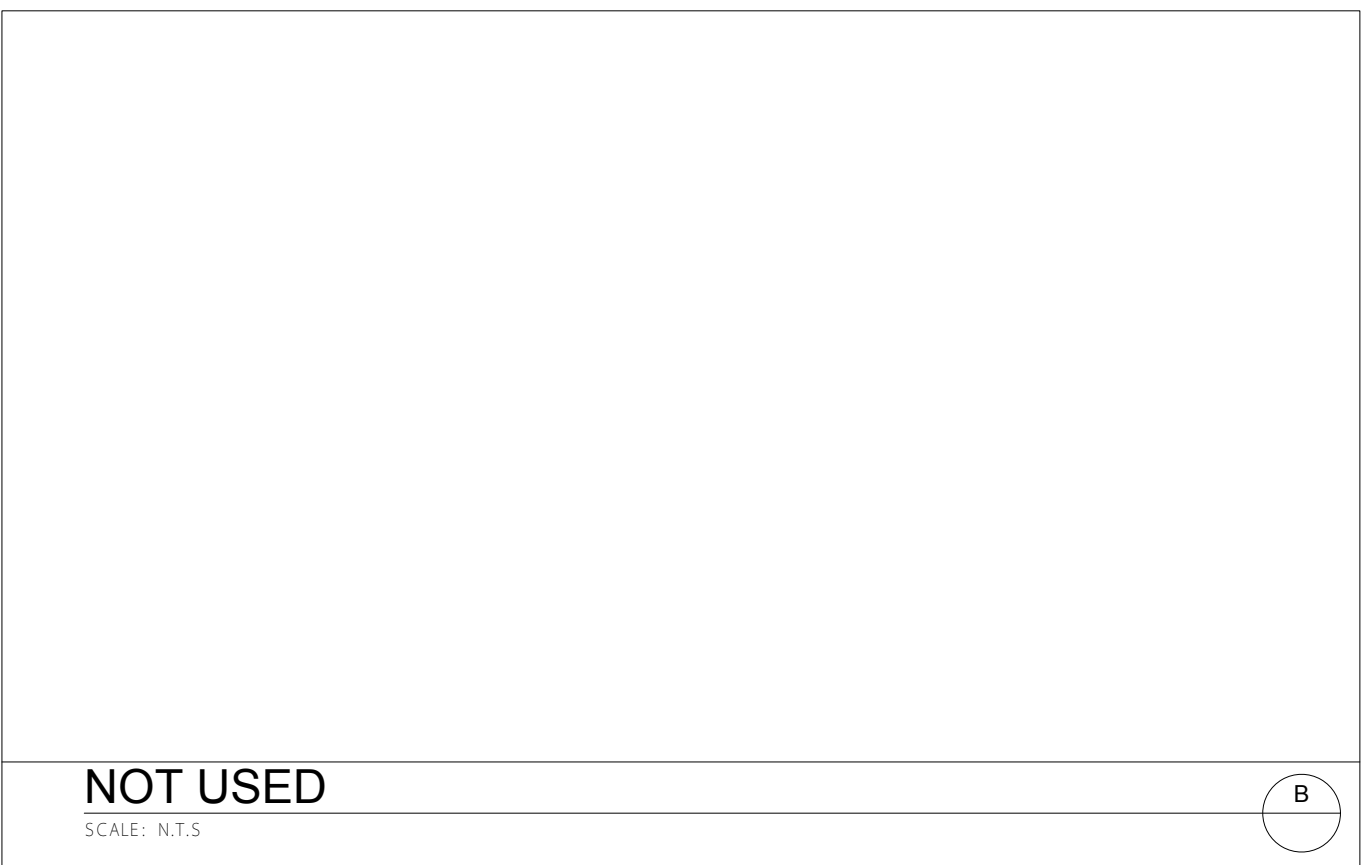
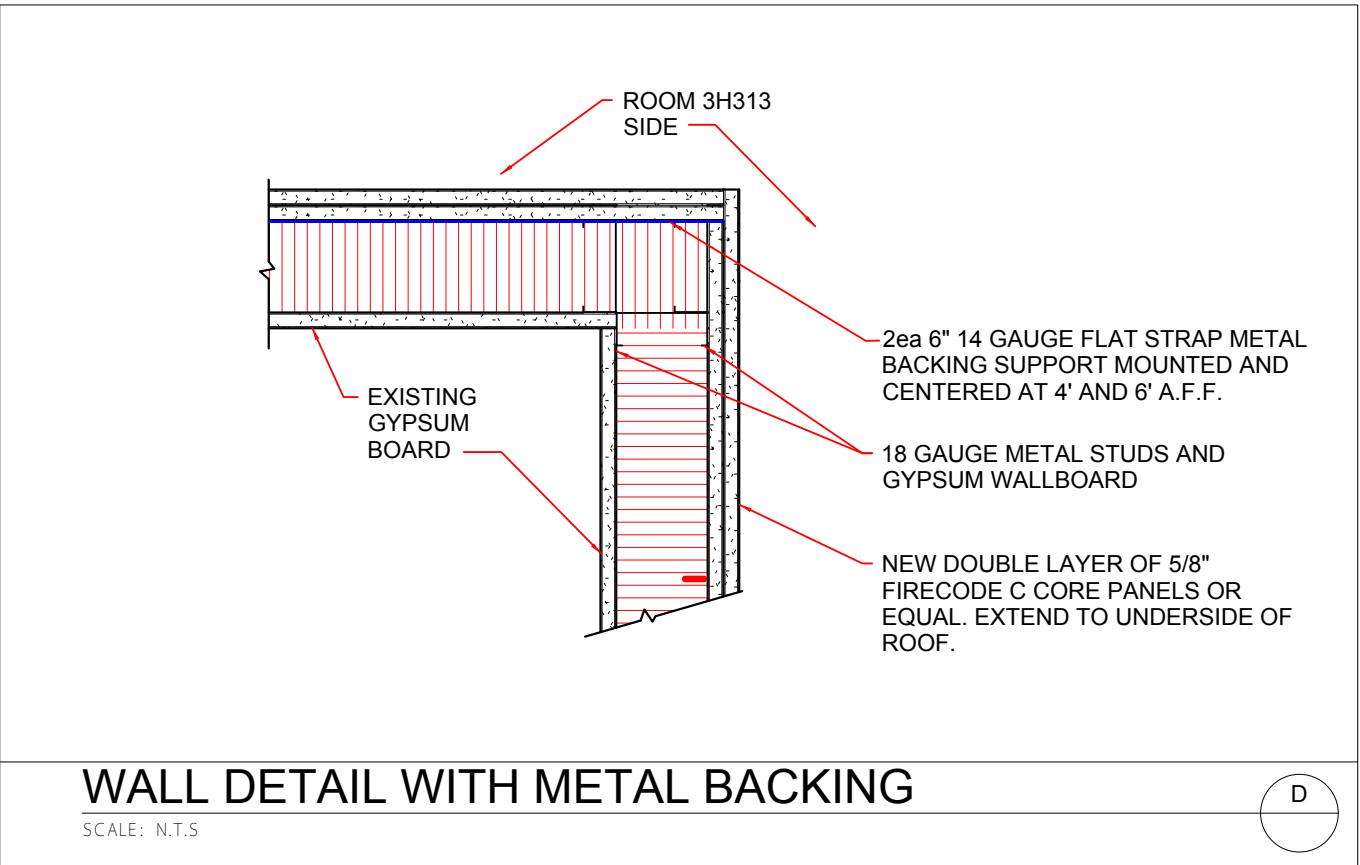
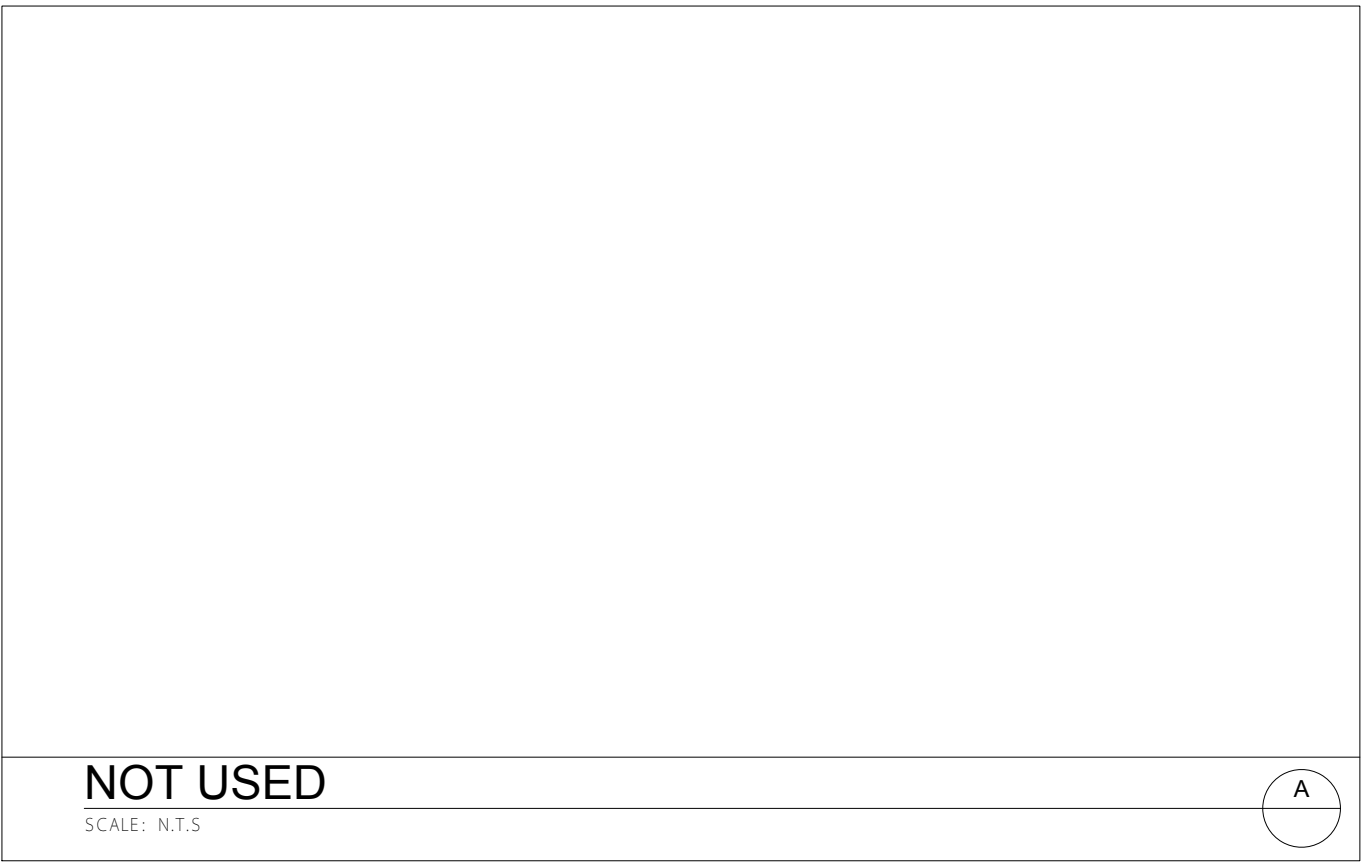
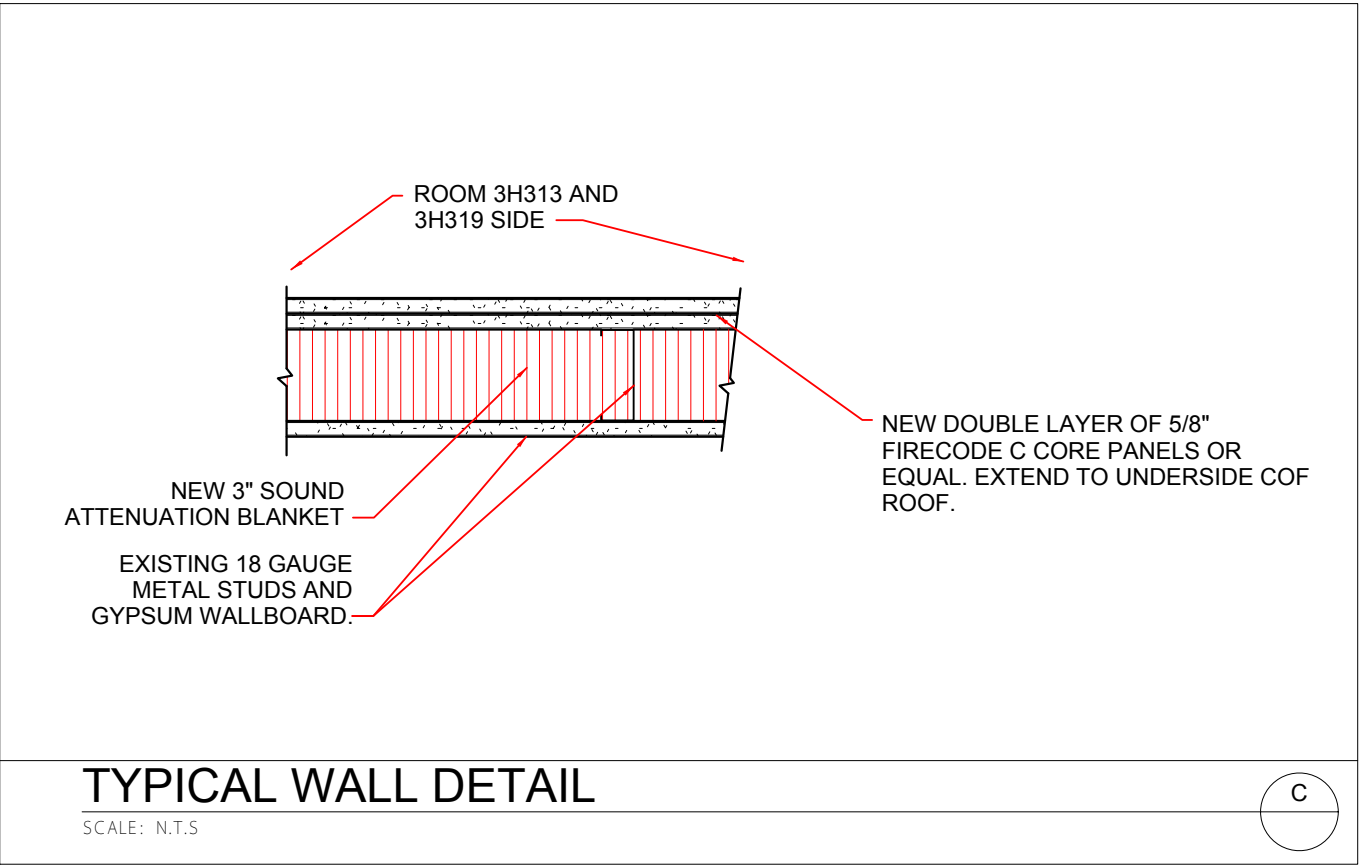
NORTH



Revisions:	Date
65% Design	3/23/2017
95% Design	4/4/2017
100% Design	4/12/2017
Revision	6/24/2017

Drawing Title	Electrical/Data Plan Room 3H319
Scale:	1/8" = 1'0" (For C size 18X24 only)
Approved: Project Director	

Project Title	Administration Building FINISH 3RD FLOOR ROOMS 3H313 & 3H319	Project Number	593-17-101
Location	North Las Vegas, NV	Building Number	6
Date	08/24/2017	Checked	JS
Drawn	BB	Drawing Number	Dwg. 9 of 13



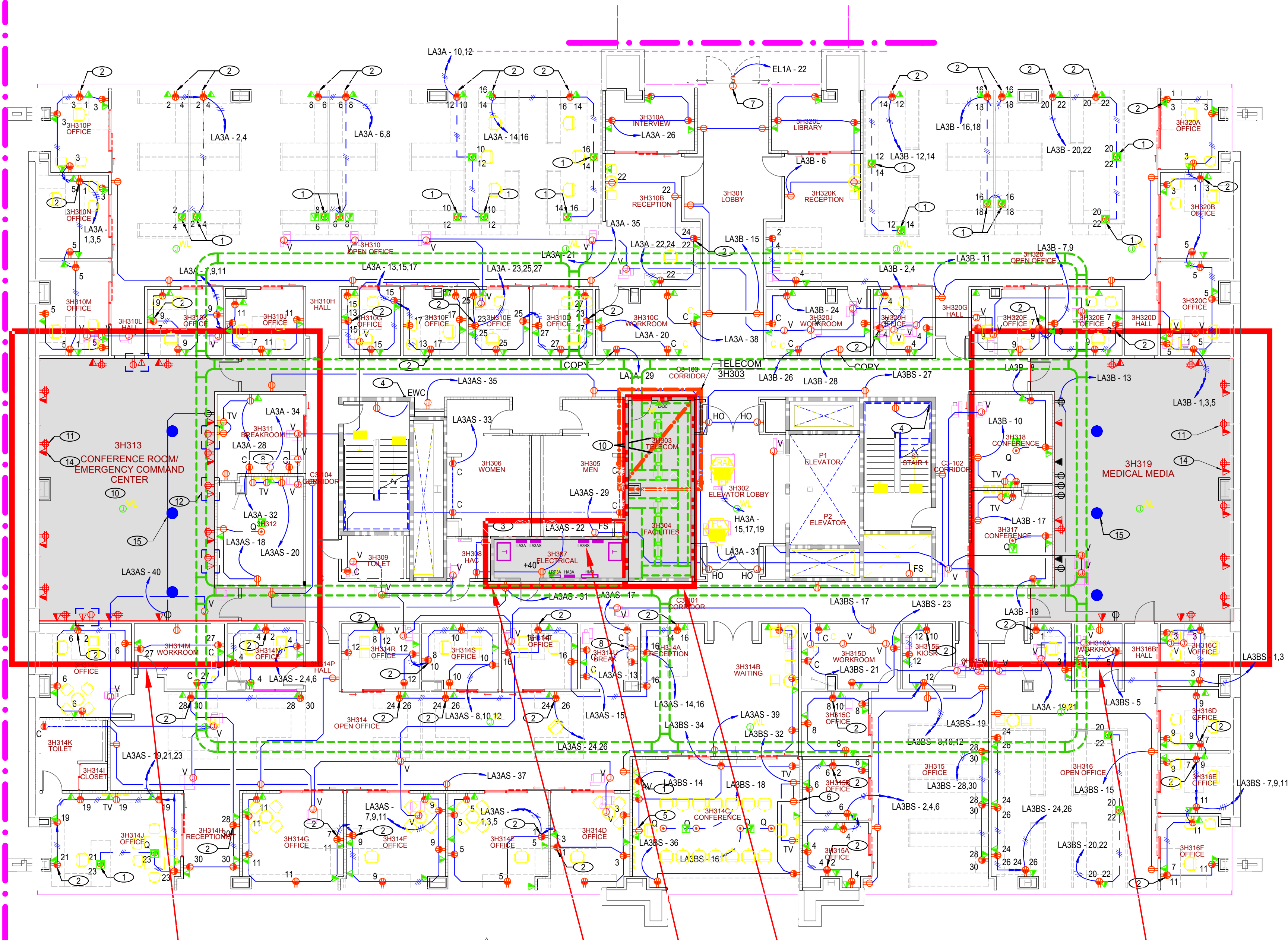
CONSTRUCTION DOCUMENTS
BUILDING IS FULLY SPRINKLERED

Revisions:	Date
65% Design	3/23/2017
95% Design	4/4/2017
100% Design	4/12/2017
Revision	8/24/2017

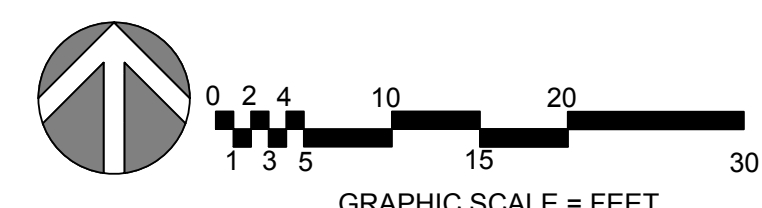
Drawing Title
Wall Details
Scale:
Approved: Project Director

Project Title
Administration Building FINISH 3RD FLOOR ROOMS 3H313 & 3H319
Location
North Las Vegas, NV
Date
08/24/2017
Checked
JS
Drawn
BB

Project Number
593-17-101
Building Number
6
Drawing Number
Dwg 10 of 13



CONFERENCE ROOM/ EMERGENCY COMMAND CENTER 3H313 ELECTRICAL ROOM 3H307 PANEL LA3BS TELECOM ROOM 3H303 MEDICAL MEDIA ROOM 3H319



CONSTRUCTION DOCUMENTS
BUILDING IS FULLY SPRINKLERED

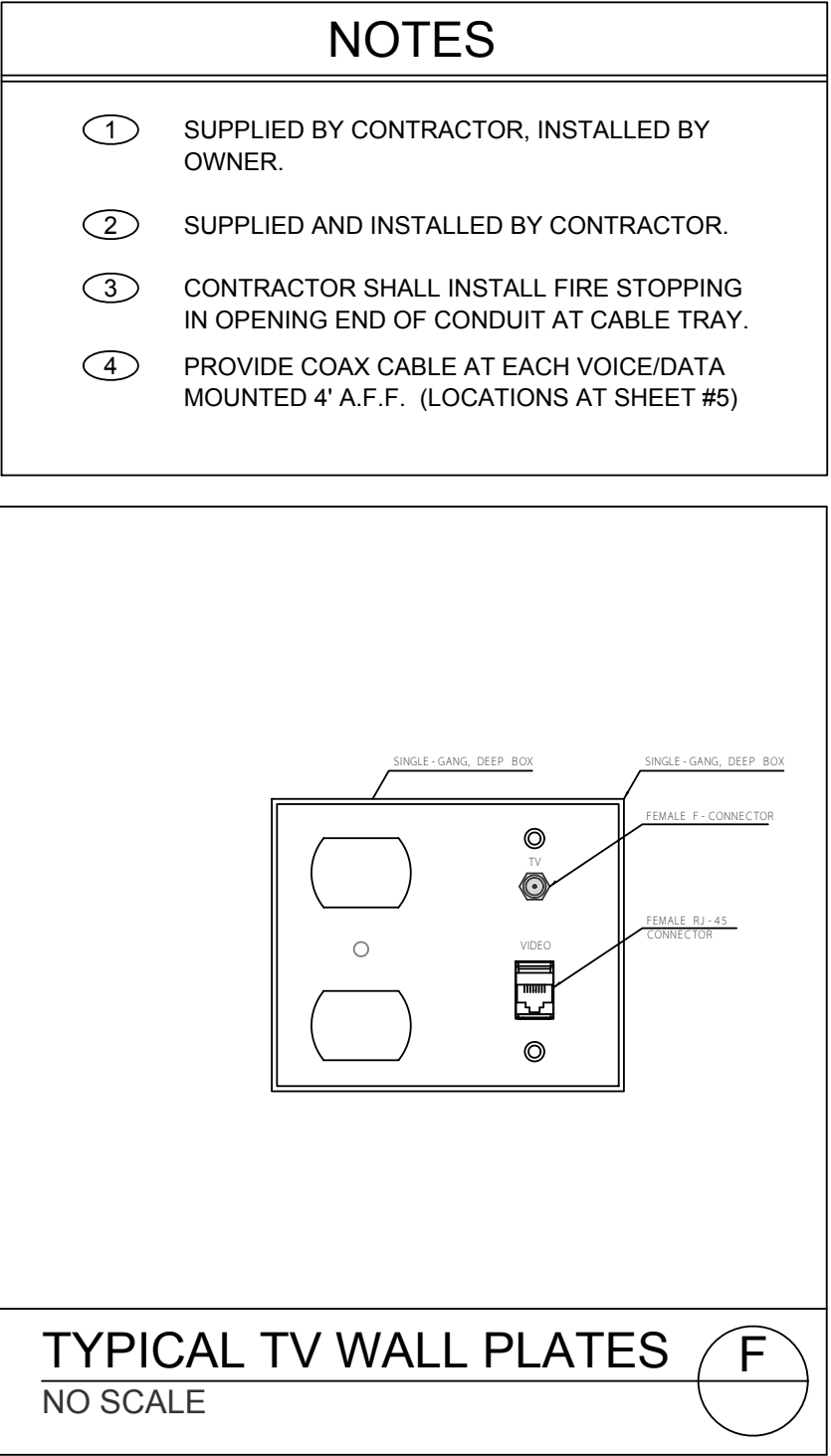
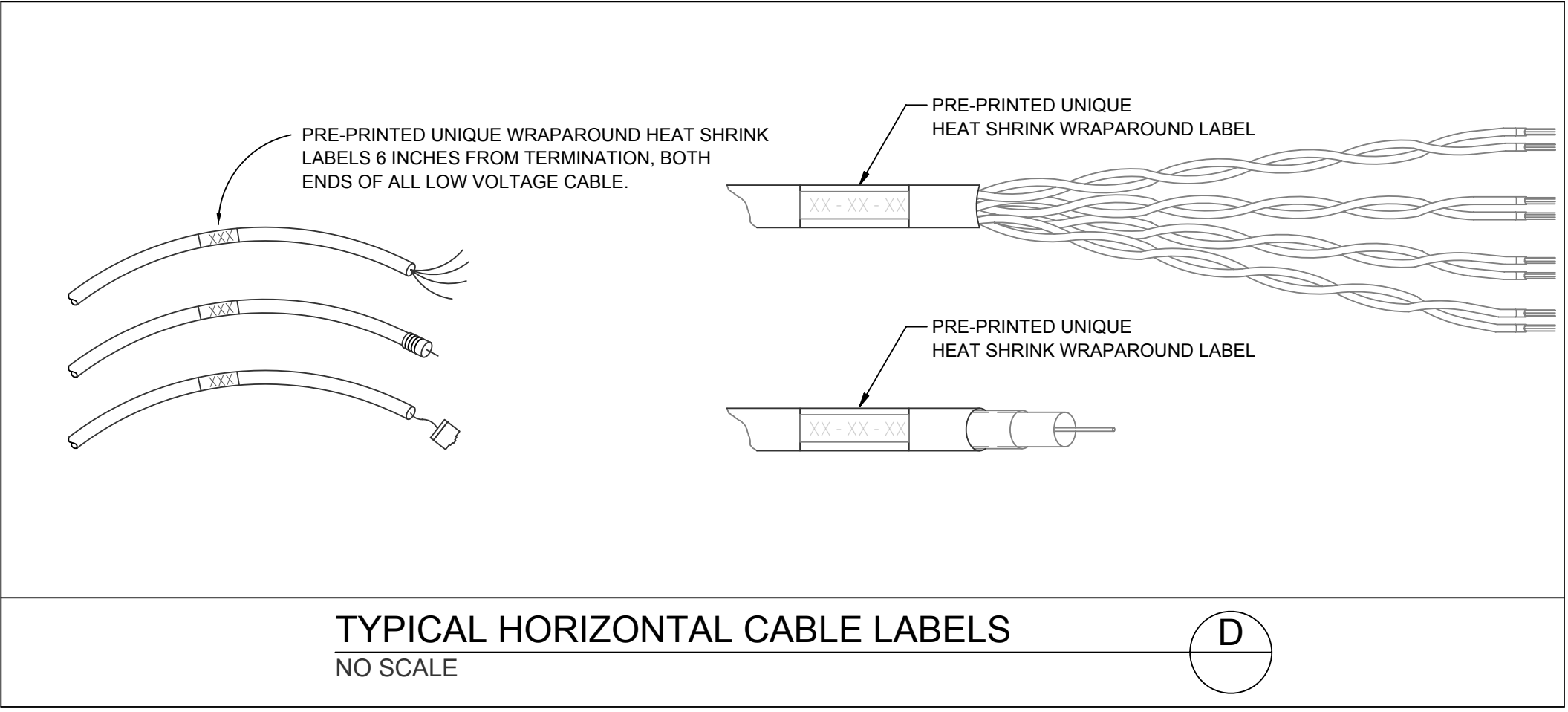
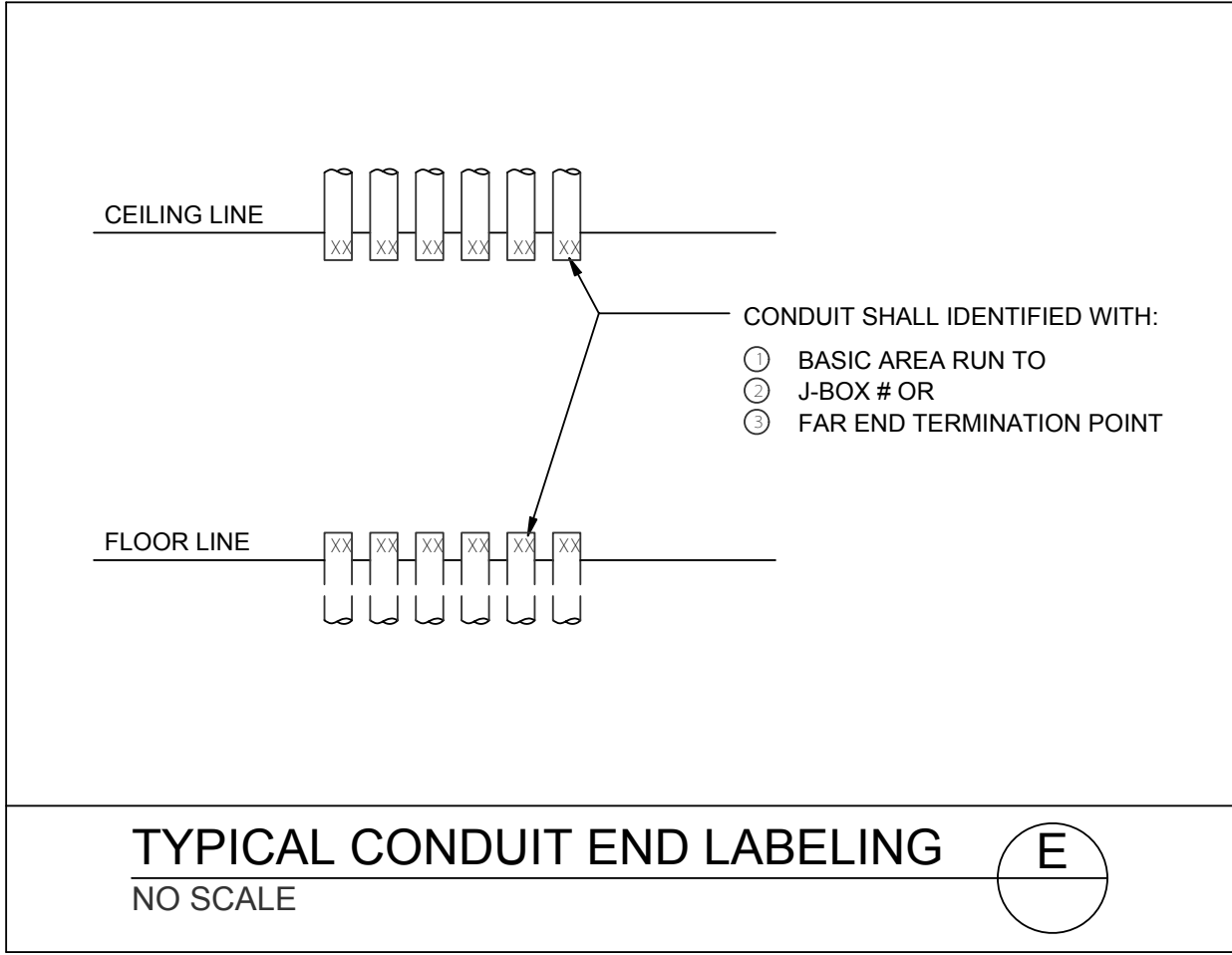
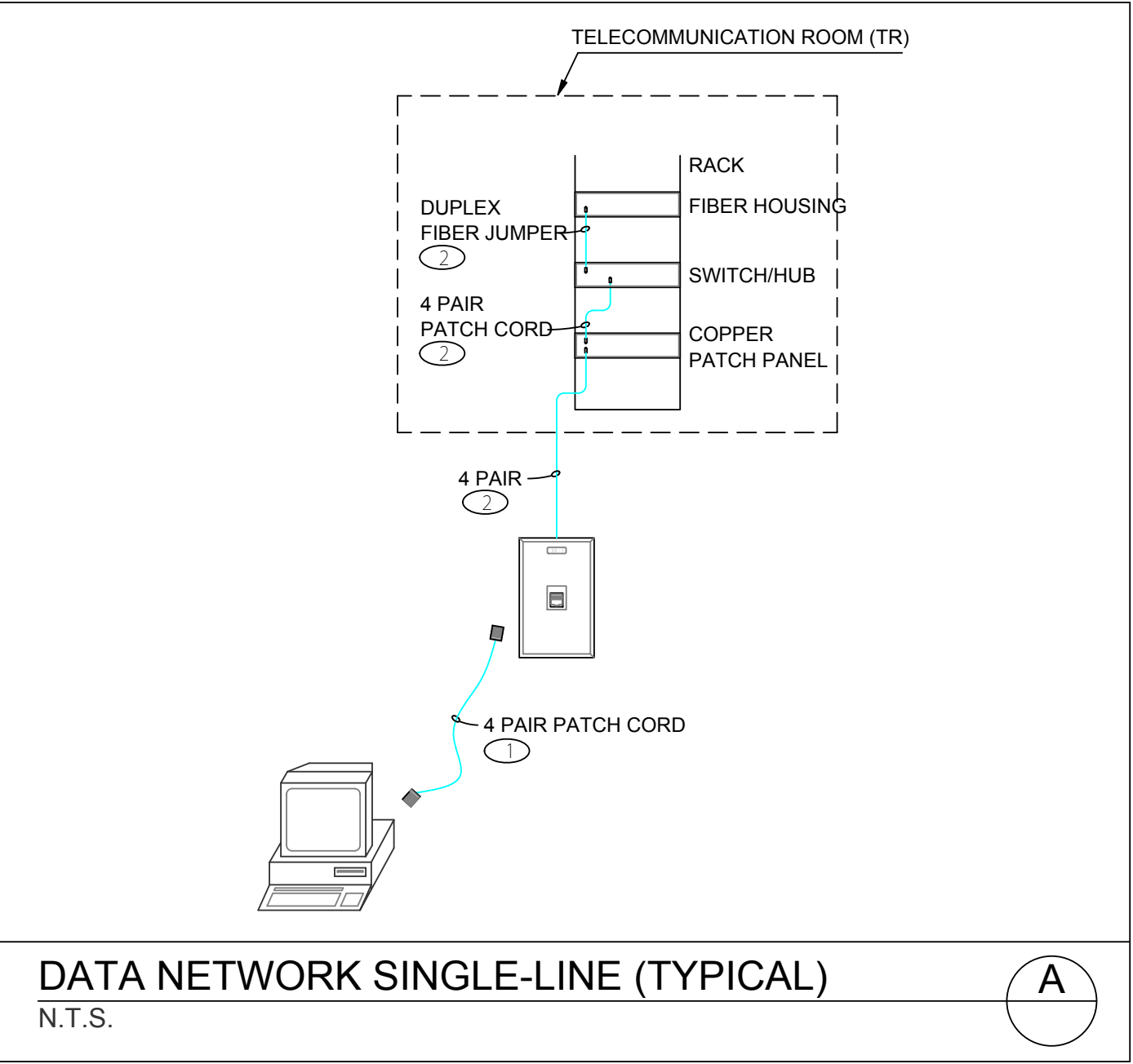
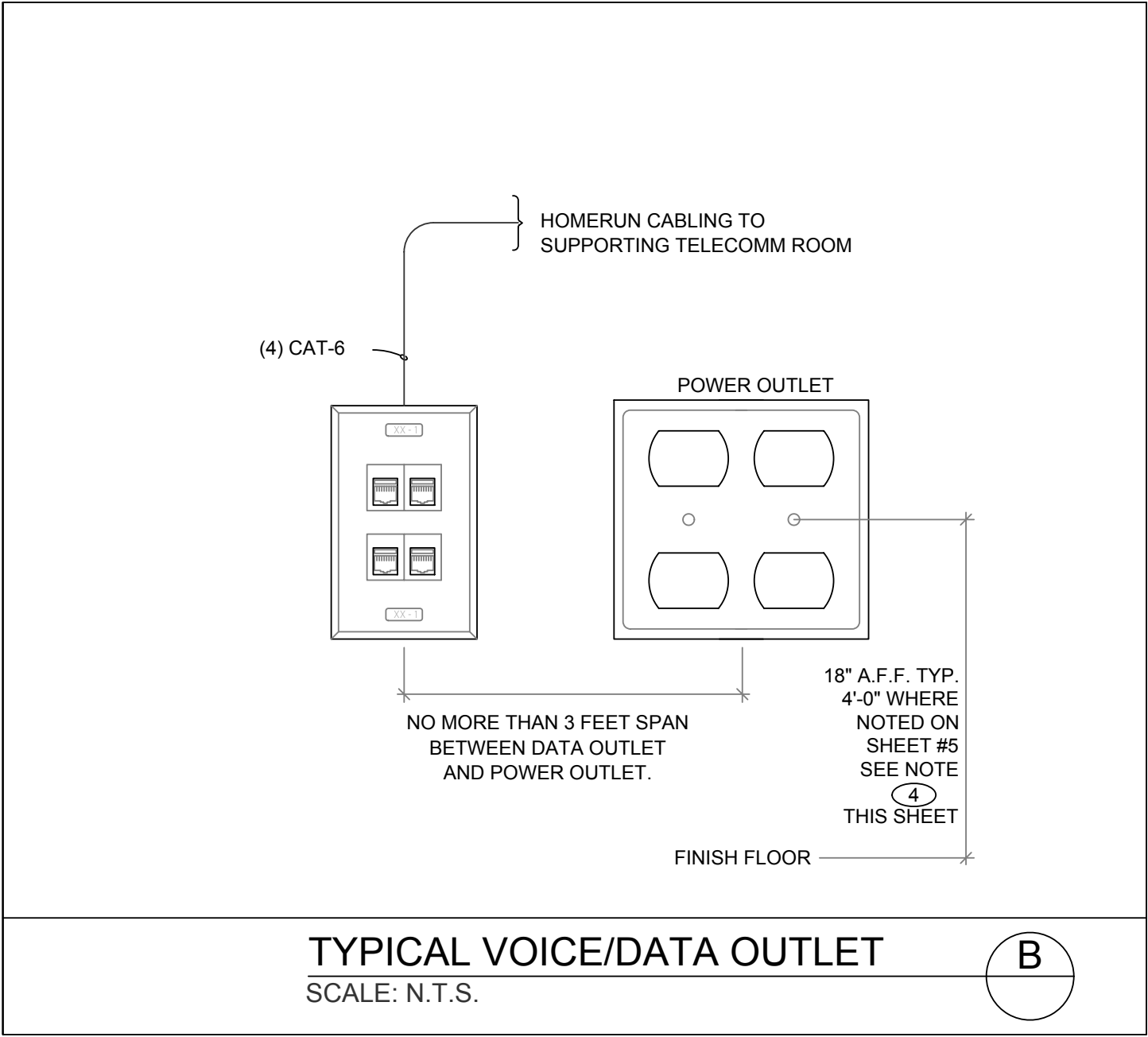
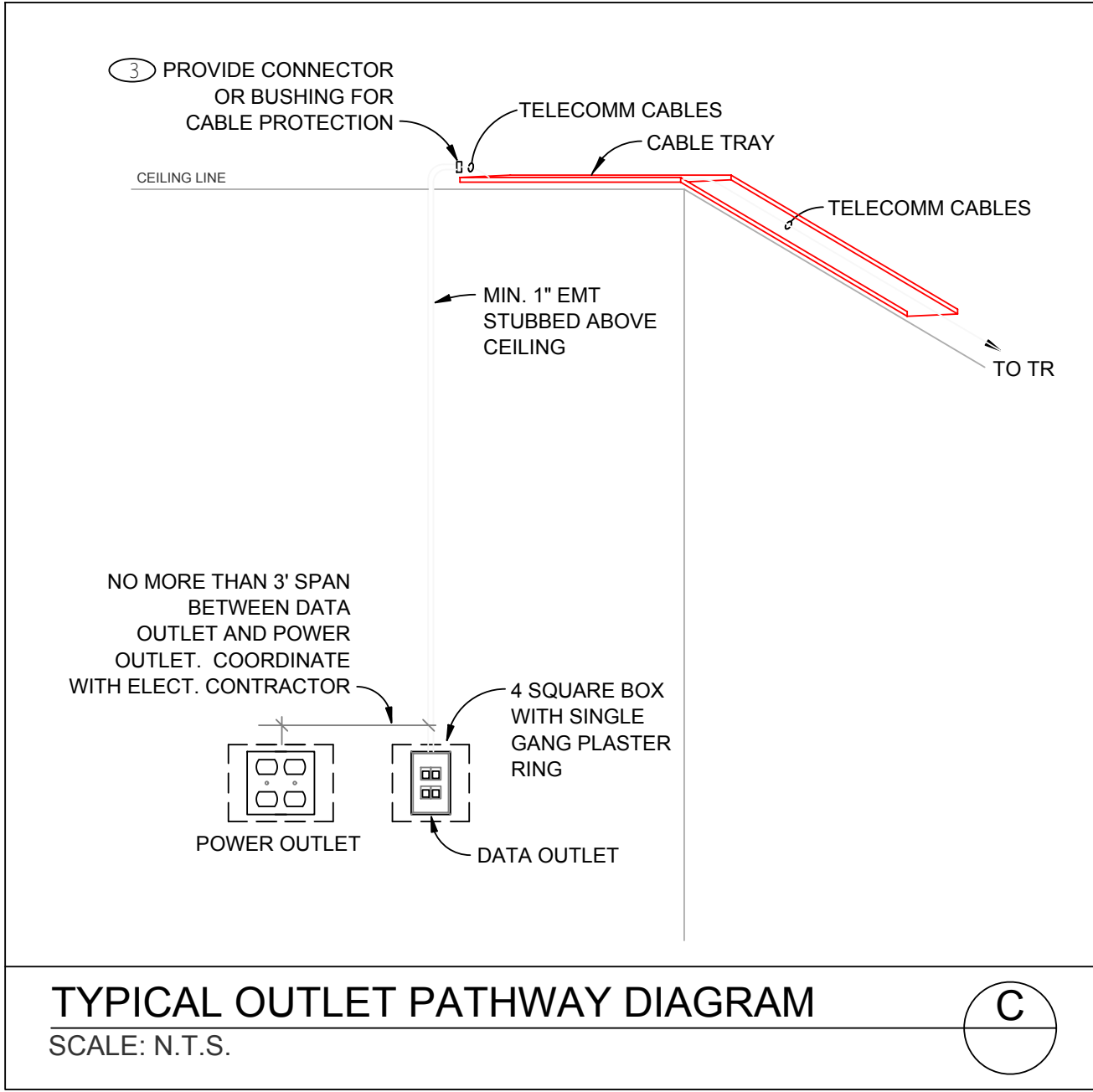
Overall Electrical/Data Plan
Electrical/Telecom Room Location
Scale: 3/32" = 1'0" (For C size 18X24 only)
Approved: Project Director

- 19 NOT IN CONTRACT
 - 20 PROVIDE COMBINED SERVICE TABLE TOP POWER AND DATA PHONE MODULES WITH QUAD RECEPTACLES. REFER TO TELECOMM AS-BUILT REFERENCE DRAWINGS AND SPECS FOR LOW VOLTAGE REQUIREMENTS. INSTALL QUAD RECEPTACLE (3 DATA, 1 VOICE) WITH CAT 6 CABLES FROM ASSOCIATED SERVING ZONE TR. TERMINATE (1) CAT 6 CABLE ON WALL MOUNTED 110 BLOCK IN TR. TERMINATE (3) CAT 6 CABLES ON 25A NEW 48 PORT RACK MOUNTED PATCH PANEL AND TERMINATE ALL FIBER STRANDS IN A RACK MOUNTED FDU IN TR. TERMINATE ALL FOUR CAT 6 CABLES IN 8P8C JACKS MOUNT AT 18" A.F.F. UNLESS OTHERWISE NOTED.
 - 21 PROVIDE WHITE QUAD RECEPTACLES.
 - 22 INSTALL DUPLEX RECEPTACLE IN TV WALL PLATES AT 4'-0" A.F.F. REFER TO SHEET #12 FOR WALLBOX REQUIREMENTS.
 - 23 NOT USED
 - 24 INSTALL QUAD DATA (3D, 1V) WITH CAT 6 CABLES FROM ASSOCIATED SERVING ZONE TR. TERMINATE (1) CAT 6 CABLE ON WALL MOUNTED 110 BLOCK IN TR. TERMINATE (3) CAT 6 CABLES ON 25A NEW 48 PORT RACK MOUNTED PATCH PANEL AND TERMINATE ALL FIBER STRANDS IN A RACK MOUNTED FDU IN TR. TERMINATE ALL FOUR CAT 6 CABLES IN 8P8C JACKS AND LEAVE ALL FIBER STRANDS UNTERMINATED AT W.A.O. MOUNT AT 18" A.F.F. UNLESS OTHERWISE NOTED.
 - 25 120V CONNECTION TO SOLATUBE DAYLIGHT DIMMERS.
- A. CONDUIT INSTALLATION SHALL BE IN STRICT COMPLIANCE WITH TIA/EIA 568 CABLE INSTALLATION SHALL BE IN STRICT COMPLIANCE WITH TIA/EIA 568 B.1 B.2 B.3 STANDARD.
- B. LOW VOLTAGE GROUNDING SYSTEM SHALL CONFORM TO TIA/EIA 607 STANDARD.
- C. ALL CABLING, PATHWAY, GROUND BUSES AND TERMINATION HARDWARE, RACKS AND CABINETS SHALL BE PROVIDED WITH IDENTIFICATION (LABELING) IN ACCORDANCE WITH THE TIA/EIA 606-A STANDARD.
- D. ALL EMPTY RACEWAY SYSTEMS SHALL HAVE A #12 PULLWIRE OR EQUAL AND SHALL BE IDENTIFIED AT ALL JUNCTION, PULL AND TERMINATION POINTS, USING PERMANENT METALLIC TAGS. TAG SHALL INDICATE INTENDED USE OF CONDUIT, ORIGIN AND TERMINATION POINTS OF EACH INDIVIDUAL CONDUIT.
- E. CONTRACTOR SHALL PROVIDE LISTED FIRESTOPPING FOR ALL TELECOM/LOW VOLTAGE CONDUITS AND CABLES, REFER TO SPECIFICATIONS.
- F. CONDUIT/PATHWAY ROUTING INDICATED ON DRAWINGS IS FOR GENERAL REFERENCE ONLY. CONTRACTOR SHALL FIELD COORDINATE AND VERIFY EXACT ROUTING AS REQUIRED.
- G. CONTRACTOR SHALL MAINTAIN SEPARATION FROM ELECTRICAL FEEDERS, ELECTRONIC BALLASTS, TRANSFORMERS, ETC. TO MINIMIZE ELECTROMAGNETIC COMPATIBILITY ISSUES.
- H. TELECOMMUNICATIONS CONTRACTOR SHALL COORDINATE WITH ELECTRICAL CONTRACTOR TO ENSURE PATHWAY ROUTING FOR TELEPHONE AND DATA DOES NOT RESULT IN CABLE LENGTHS IN EXCESS OF 295 FEET.
- I. CONDUIT GREATER THAN 1 1/2" WILL REQUIRE J-BOX SIZED PER THE NEC.
- J. UNLESS SPECIFICALLY INDICATED OTHERWISE, CONDUIT SHALL NOT EXTEND FROM TR TO MORE THAN THREE OUTLET BOXES.
- K. BEND RADIUS OF CONDUIT LESS THAN 2" = 8 TIMES INTERNAL CONDUIT DIAMETER, GREATER THAN 2" = 10 TIMES INTERNAL CONDUIT DIAMETER.
- L. ANY RUN WITH MORE THAN TWO 90° BENDS BETWEEN PULL POINTS REQUIRES A PULLBOX.
- M. PULL BOXES MAY NOT BE USED IN PLACE OF A BEND.
- N. JUNCTION BOX REQUIRED IF CONDUIT RUN IS MORE THAN 100 FEET.
- O. INSTALLATION SHALL BE PERFORMED IN A WORKMANLIKE MANNER TO THE SATISFACTION OF THE VA COR.
- P. CONTRACTOR SHALL REFER TO SPECIFICATION FOR ADDITIONAL PROJECT REQUIREMENTS. SPECIFICATIONS SUPERSEDE DRAWING INFORMATION.
- Q. ALL FIBER OPTIC CABLE SHALL BE INSTALLED IN INNER DUCT.
- R. WORK, MATERIALS AND EQUIPMENT SHALL CONFORM TO THE LATEST EDITIONS OF LOCAL, STATE AND NATIONAL CODES AND ORDINANCES.
- S. ALL LOW VOLTAGE SYSTEMS COMPONENTS SHALL BE LISTED OR LABELED BY UL OR OTHER RECOGNIZED TESTING FACILITY.
- T. ALL CABLING SHALL BE COMPLETE, OPERABLE, TESTED (END TO END) IN ACCORDANCE WITH THE APPLICABLE TIA/EIA STANDARDS FOR THE SPECIFIC MEDIA INVOLVED.
- U. PROVIDE RECORD DRAWINGS TO VA COR. DRAWINGS SHALL INCLUDE PULLBOXES, BACKBONE INTERCEPTING, STUB UP LOCATIONS AND ROUTING, ETC.
- V. COORDINATE WITH VA COR FOR EXACT LOCATION, ELEVATION AND COLOR REQUIREMENTS OF OUTLETS/FACEPLATES.

Revisions:	Date
65% Design	3/23/2017
95% Design	4/4/2017
100% Design	4/12/2017
Revision	6/24/2017

Drawing Title	Overall Electrical/Data Plan Electrical/Telecom Room Location
Scale:	3/32" = 1'0" (For C size 18X24 only)
Approved:	Project Director

Project Title	Administration Building FINISH 3RD FLOOR ROOMS 3H313 & 3H319
Project Number	593-17-101
Building Number	6
Drawing Number	Dwg 11 of 13
Location	North Las Vegas, NV
Date	08/24/2017
Checked	JS
Drawn	BB

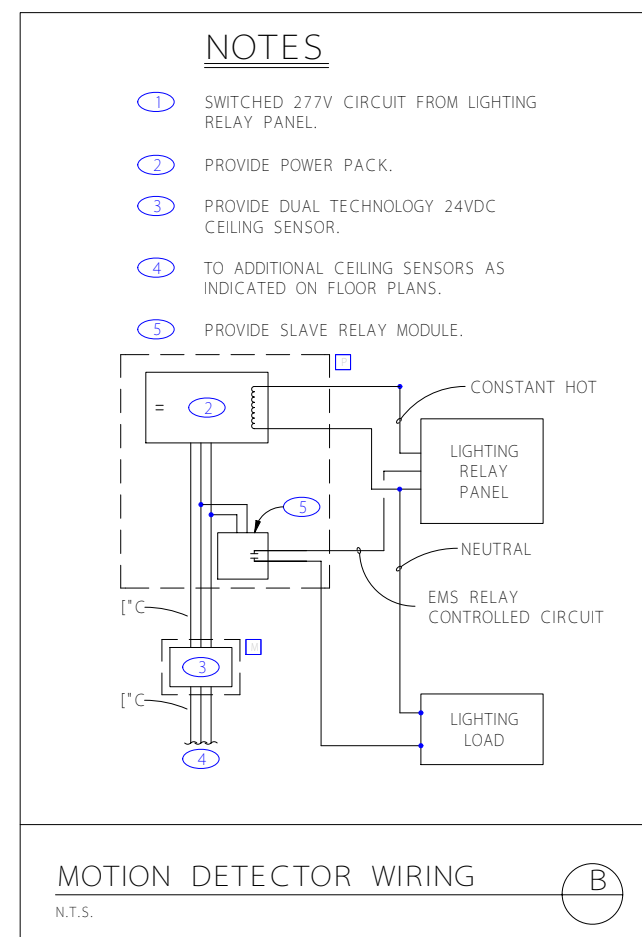
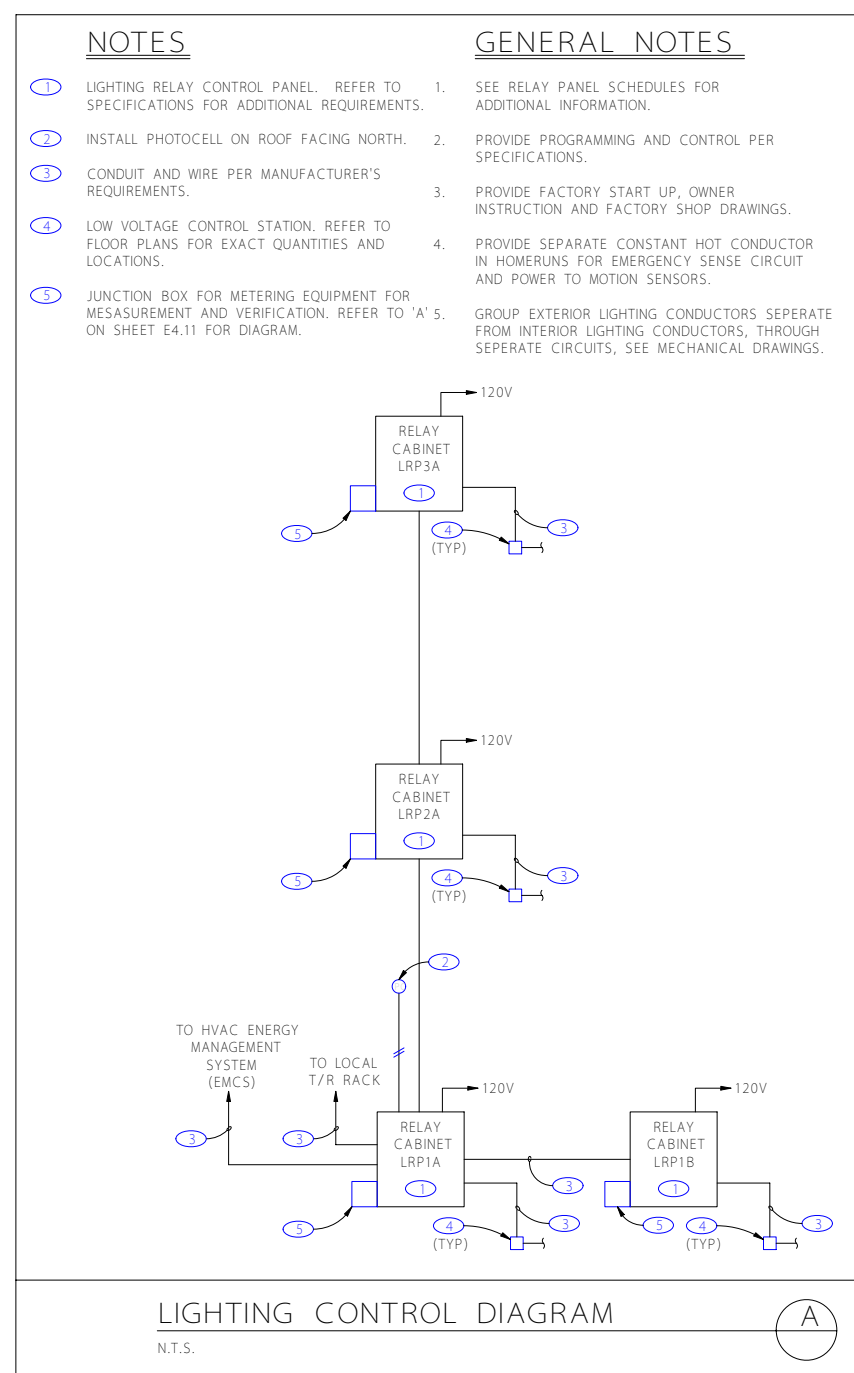


Revisions:	Date
65% Design	3/23/2017
95% Design	4/4/2017
100% Design	4/12/2017
Revision	8/24/2017

Drawing Title	Electrical/Data Details
Scale:	
Approved: Project Director	

Project Title	Administration Building FINISH 3RD FLOOR ROOMS 3H313 & 3H319
Location	North Las Vegas, NV
Date	08/24/2017
Checked	JS
Drawn	BB

Project Number	593-17-101
Building Number	6
Drawing Number	Dwg 12 of 13



PANEL: LA3B

DATE: 8/15/12 2:03 PM

JOB: 10.0264

VOLTAGE: 208 / 120

BUS: 225A

MAINS: 225A MCR

3Ø / W

LOCATION: LEVEL 3 ELECT. RM.

MOUNTING: SURFACE

CIRCUIT CODE: blank or

N: NON-CONTINUOUS

L: LONG-CONTINUOUS

R: DEMANDABLE RECEPTACLES

K: KITCHEN

NO. OF EQUIPMENT:

0

0

0

CIRCUIT CODE	TRIP	P.O.E.	LOAD DESIGNATION				C O N N E C T E D V A												LOAD DESIGNATION				TRIP	P.O.E.	CIRCUIT CODE
			DESCRIPTION	(NOTE)	M	R	L	ØA	ØB	ØC	A	R	C	ØA	ØB	ØC	L	R	M	(NOTE)	DESCRIPTION				
1	R	20	1	OFFICE RECEPTS - TC			3	540					•	360			2		1	OFFICE RECEPTS - TC	20	1	R		
3	R	20	1	OFFICE RECEPTS					1440				•		1800			10		OFFICE RECEPTS	20	1	R		
5	R	20	1	OFFICE RECEPTS						1620			•			1440		8		LIBRARY RECEPTS	20	1	R		
7	R	20	1	OFFICE RECEPTS - TC			2	360					•	1080			6		CONF RECEPTS	20	1	R			
9	R	20	1	OFFICE RECEPTS					1800				•		720			4		CONF RECEPTS	20	1	R		
11	R	20	1	OFFICE RECEPTS						540			•			540		3	1	OPEN OFFICE RECEPTS - TC	20	1	R		
13	R	20	1	LOBBY RECEPTS			2	360					•	540				3		OPEN OFFICE RECEPTS	20	1	R		
15	R	20	1	LOBBY RECEPTS					900				•		720			4	1	OPEN OFFICE RECEPTS - TC	20	1	R		
17	R	20	1	CONF RECEPTS						720			•			720		4		OPEN OFFICE RECEPTS	20	1	R		
19	R	20	1	CONF RECEPTS							1080		•	720				4	1	OPEN OFFICE RECEPTS - TC	20	1	R		
21	N	20	1	MOTORIZED SHADES			4		1600				•		720			4		OPEN OFFICE RECEPTS	20	1	R		
23	N	20	1	MOTORIZED SHADES			3			1200			•			720		4		WORKROOM RECEPTS	20	1	R		
25		20	1	SPARE				—					•	720				4		WORKROOM RECEPTS	20	1	R		
27	N	20	1	DDC PANELS					600				•		1000					COPIER	20	1	R		
29	N	20	1	DDC PANELS						600			•			—				SPARE	20	1	R		
31	R	20	1	PENTHOUSE RECEPTS			4	1080					•	—						SPARE	20	1	R		
33	R	20	1	PENTHOUSE RECEPTS					1080				•		—					SPARE	20	1	R		
35	R	20	1	PENTHOUSE RECEPTS						1080			•			—				SPARE	20	1	R		
37	N	20	1	F/S DAMPERS				500					•	—						SPACE					
39		20	1	SPARE					—				•		—					SPACE					
41		20	1	SPARE					—				•		—					SPACE					
43				SPACE					—				•		—					SPACE					
45				SPACE					—				•		—					SPACE					
47				SPACE					—				•		—					SPACE					
49				SPACE					—				•		—					SPD	60				
51				SPACE									•		—					—					
53				SPACE						—			•		—					—		3			

PANEL NOTES:

1. ROUTE CIRCUIT VIA TIMECLOCK CONTROLLED RELAY. REFER TO DIAGRAM "C" ON SHEET E-411.

PHASE TOTALS

ØA: 7340

ØB: 12380

ØC: 9180

TOTAL CONNECTED VA

28900

CONNECTED VA (CODE N)	2700
CONNECTED VA (CODE L)	0
CONNECTED VA (CODE R)	23400
CONNECTED VA (CODE K)	0
PANEL CONNECTED KVA	28.9
PANEL DEMAND KVA	22.2
PANEL DEMAND AMPS	61.6
HIGH Ø AMPS w/ DEMAND	78.7

PROVIDE PANEL WITH SUB-FEED LUGS

RELAY 'LRP3A' SCHEDULE				
RELAY NUMBER	CIRCUIT NUMBER	CIRCUIT LOAD (VA)	REMARKS	TIME/CLOCK SCHEDULE
1	HA3A - 1	1860	PENTHOUSE LTS	B
2	HA3A - 3	870	OPEN OFFICE LTS LVL 3	A
3	HA3A - 3	960	OFFICE LTS	A
4	HA3A - 5	3430	OPEN OFFICE LTS LVL 3	A
5	HA3A - 7	3177	CORRIDOR AND OFFICE LTS LVL 3	B
6	HA3A - 9	1770	OFFICE LTS LV3 3	A
7	HA3A - 11	2400	OPEN OFFICE LTS LVL 3	A
8	HA3A - 13	1340	CONNECTOR LVL 3	B
9	HA3A - 4	1440	OFFICE LIGHTS 3H319	A
10	HA3A - 6	1440	OFFICE LIGHTS 3H313	A
11	-	-	SPARE RELAY	-
12	-	-	SPARE RELAY	-
13	-	-	SPARE RELAY	-
14	-	-	SPARE RELAY	-
15	-	-	SPARE RELAY	-
16	-	-	SPARE RELAY	-
17	-	-	SPARE RELAY	-
18	-	-	SPARE RELAY	-
19	-	-	SPARE RELAY	-
20	-	-	-	-
21	-	-	-	-
22	-	-	-	-
23	-	-	-	-
24	-	-	-	-

PANEL: LA3BS

DATE: 8/15/12 2:03 PM

JOB: 10.0264

VOLTAGE: 208 / 120

BUS: 225A

MAINS: 225A MCB

AIC RATING: 10,000

3Ø / W

CIRCUIT CODE: blank or

LOCATION: LEVEL 3 ELEC. RM.

MOUNTING: SURFACE

N: NON-CONTINUOUS

L: LONG-CONTINUOUS

R: DEMANDABLE RECEPTACLES

K: KITCHEN

NO. OF EQUIPMENT:

0

CCT NO	CODE	TRF	POLE	LOAD DESIGNATION						C O N N E C T E D V A												LOAD DESIGNATION						CCT NO		
				DESCRIPTION (NOTE)			M	R	L	ØA	ØB	ØC	A	B	C	ØA	ØB	ØC	L	R	M	(NOTE)	DESCRIPTION			TRF	POLE		CODE	
1	R	20	1	OFFICE RECEPTS - TC			1	2		360						360				2			OFFICE RECEPTS	20	1	R	1			
3	R	20	1	OFFICE RECEPTS							1440							1260			7			OFFICE RECEPTS	20	1	R	1		
5	R	20	1	WORKROOM RECEPTS								540							1260			7			OFFICE RECEPTS	20	1	R	6	
7	R	20	1	OFFICE RECEPTS - TC			1	3		540						1260							7			OFFICE RECEPTS	20	1	R	8
9	R	20	1	OFFICE RECEPTS							1440						360				2	1		OFFICE RECEPTS - TC	20	1	R	10		
11	R	20	1	OFFICE RECEPTS								1260						900			5			OFFICE RECEPTS	20	1	R	12		
13	R	20	1	COPIER					1000							360									AV RECEPT	20	1	R	14	
15	R	20	1	CONF RECEPTS					3			540					720				4			CONF RECEPTS	20	1	R	16		
17	R	20	1	COPIER								500						720			4			CONF RECEPTS	20	1	R	18		
19	R	20	3	CONF RECEPTS					4	720						540					3			OPEN OFFICE RECEPTS	20	1	R	20		
21	R	20	1	WORKROOM RECEPTS					4		720						540				3			OPEN OFFICE RECEPTS	20	1	R	22		
23	R	20	1	WORKROOM RECEPTS					4			720						720			4			OPEN OFFICE RECEPTS	20	1	R	24		
25	R	20	1	MOTORIZED SHADES						1200						720					4			OPEN OFFICE RECEPTS	20	1	R	26		
27	R	20	1	CONF RECEPTS					4			720					540				3			OPEN OFFICE RECEPTS	20	1	R	28		
29	R	20	1	MOTORIZED SHADES									1600					540			3			OPEN OFFICE RECEPTS	20	1	R	30		
31	R	20	1	MOTORIZED SHADES						1600						540					3			CONF AV RECEPTS	20	1	R	32		
33	R	20	1	WALL RECEPTS - 3H313					10			1800						1080			6			CONF RECEPTS	20	1	R	34		
35	R	20	1	TABLE RECEPTS - 3H313					10			1800							1080		6			CONF RECEPTS	20	1	R	36		
37	R	20	1	WALL TV RECEPTS - 3H313					5	900						900					5			OFFICE RECEPTS - 3H319	20	1	R	38		
39	R	20	1	SPACE							-						900				5			OFFICE RECEPTS - 3H319	20	1	R	40		
41	R	20	1	SPACE							-						-							SPACE				42		
43				SPACE							-						-							SPACE				44		
45				SPACE							-						-							SPACE				46		
47				SPACE							-						-							SPACE				48		
49				SPACE							-						-							SPACE				50		
51				SPACE							-						-							SPACE				52		
53				SPACE							-						-							SPACE				54		

PANEL NOTES:

1. ROUTE CIRCUIT VIA TIMECLOCK CONTROLLED RELAY. REFER TO DIAGRAM 'A'

PHASE TOTALS

ØA: 11000

ØB: 12060

ØC: 11640

TOTAL CONNECTED VA

34700

CONNECTED VA (CODE N)	8900
CONNECTED VA (CODE L)	0
CONNECTED VA (CODE R)	25800
CONNECTED VA (CODE K)	0
PANEL CONNECTED KVA	34.7
PANEL DEMAND KVA	26.8
PANEL DEMAND AMPS	74.4
HIGH Ø AMPS w/ DEMAND	76.5

PANEL: HA3A

DATE: 8/15/12 1:58 PM

JOB: 10.0264

VOLTAGE: 480

BUS: 400A

MAINS: L.O.

AIC RATING: 35,000

3Ø 4W

CIRCUIT CODE: blank or

LOCATION: LEVEL 3 ELECT. RM.

MOUNTING: SURFACE

N: NON-CONTINUOUS

L: LONG-CONTINUOUS

R: DEMANDABLE RECEPTACLES

K: KITCHEN

NO. OF EQUIPMENT: 0

CIRCUIT NO.	CODE	TRIP	POLE	LOAD DESIGNATION				C O N N E C T E D V A										LOAD DESIGNATION				TRIP	POLE	CODE	CIRCUIT NO.
				DESCRIPTION (NOTE)	M	R	L	ØA	ØB	ØC	A	B	C	ØA	ØB	ØC	L	R	M	(NOTE)	DESCRIPTION				
1	L	20	1	LIGHTING RELAY PANEL	1			1860			•									SPARE	20	1	2		
3	L	20	1	LIGHTING RELAY PANEL	1				1830			•			1440					OFFICE LIGHTS 3H319	20	1	4		
5	L	20	1	LIGHTING RELAY PANEL	1					3430		•				1440				OFFICE LIGHTS 3H313	20	1	6		
7	L	20	1	LIGHTING RELAY PANEL	1			3177			•		—							SPARE	20	1	8		
9	L	20	1	LIGHTING RELAY PANEL	1				1770			•			—					SPARE	20	1	10		
11	L	20	1	LIGHTING RELAY PANEL	1					2400		•				—				SPARE	20	1	12		
13	L	20	1	LIGHTING RELAY PANEL	1			1340				•		—						SPARE	20	1	14		
15	N	20	1	CRAC 3—T(11.8 FLA)					3270			•			—					SPARE	20	1	16		
17	N	—	—	—						3270		•			—					SPARE	20	1	18		
19	N	—	3	—				3270			•		—							SPARE	20	1	20		
21	—	20	1	SPARE					—			•			—					SPARE	20	1	22		
23	—	20	1	SPARE						—			•			—				SPARE	20	1	24		
25	—	20	1	SPARE					—				•		—					SPARE	20	1	26		
27	—	20	1	SPARE						—			•			—				SPARE	20	1	28		
29	—	20	1	SPARE						—			•			—				SPARE	20	1	30		
31	—	—	—	SPACE					—			•		—						SPACE			32		
33	—	—	—	SPACE						—			•			—				SPACE			34		
35	—	—	—	SPACE						—			•			—				SPACE			36		
37	—	110	1	T—LA3A				18800			•			11966						T—LA3B	110	—	38		
39	—	—	—	---					18800				•			11966				---		—	40		
41	—	—	3	---						18800			•				11966			---		3	42		

PANEL NOTES:

1)

PHASE TOTALS

ØA: 40413

ØB: 39076

ØC: 39866

TOTAL CONNECTED VA

119355

CONNECTED VA (CODE N)

102108

CONNECTED VA (CODE L)

17247

CONNECTED VA (CODE R)

0

CONNECTED VA (CODE K)

0

PANEL CONNECTED KVA

119.4

PANEL DEMAND KVA

123.7

PANEL DEMAND AMPS

343.3

HIGH Ø AMPS w/ DEMAND

349.8