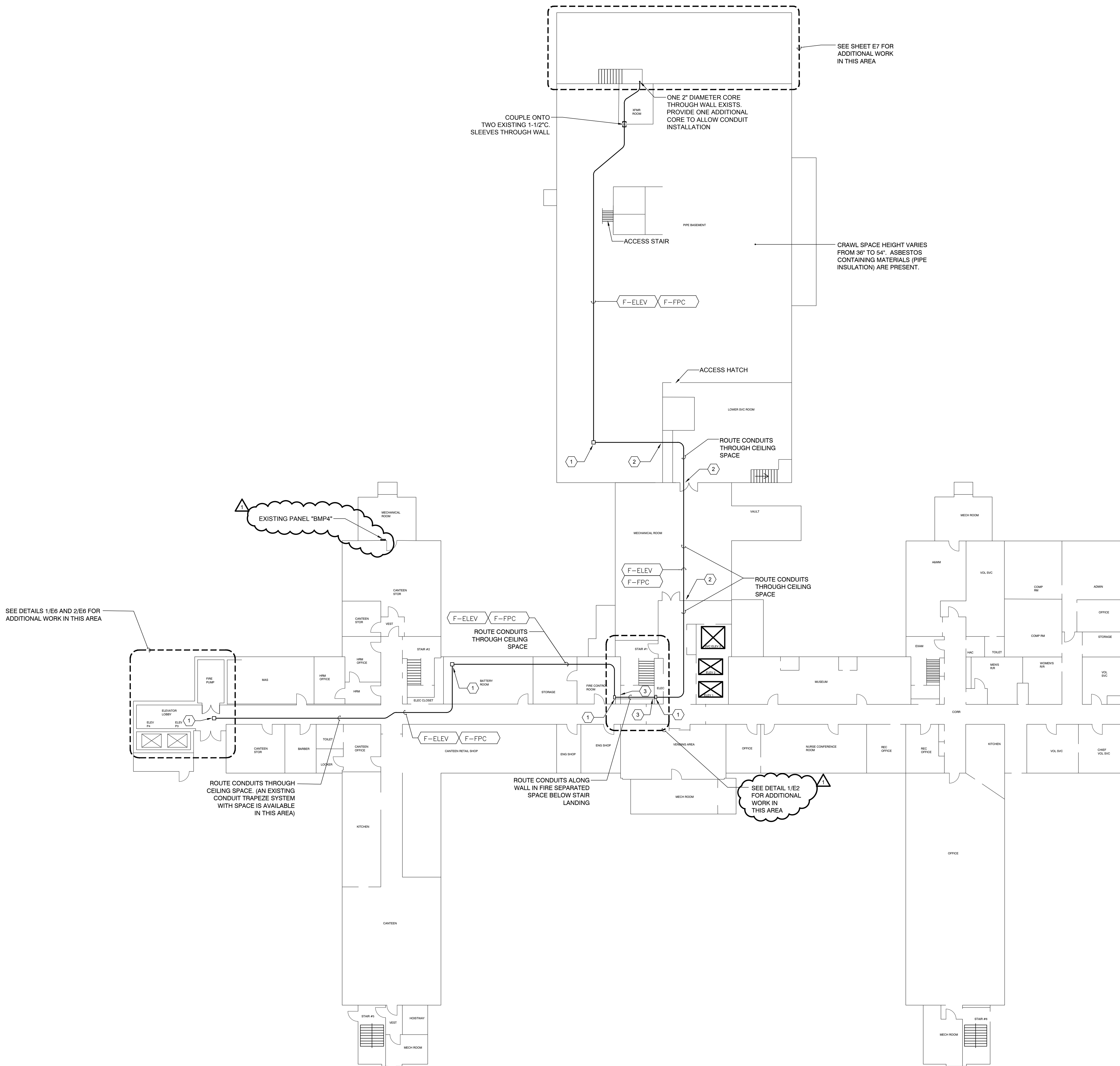


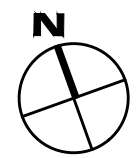
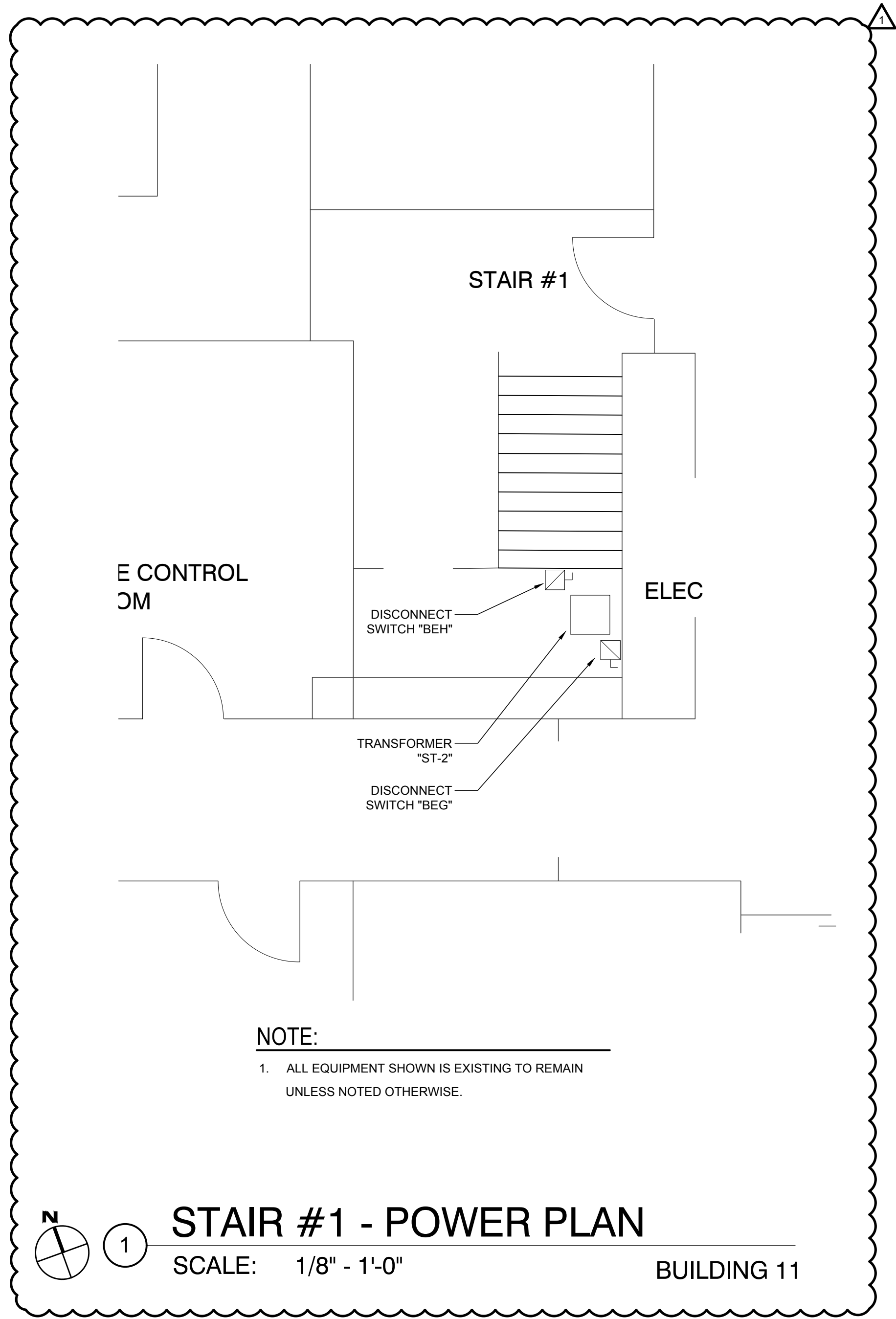
Aug 24, 2017 - 9:25am
Drawing File: E:\2015\000\000\2015\14\000\01 CAD\06 Elec\E2-E4 - Building 11.dwg Layout: Basement

three eighths inch = one foot
one eighth inch = one foot
one quarter inch = one foot
one half inch = one foot
three quarters inch = one foot
one inch = one foot
one and one half inches = one foot
two inches = one foot
three inches = one foot
four inches = one foot
five inches = one foot
six inches = one foot
seven inches = one foot
eight inches = one foot
nine inches = one foot
ten inches = one foot
eleven inches = one foot
twelve inches = one foot
thirteen inches = one foot
fourteen inches = one foot
fifteen inches = one foot
sixteen inches = one foot
seventeen inches = one foot
eighteen inches = one foot
nineteen inches = one foot
twenty inches = one foot
twenty one inches = one foot
twenty two inches = one foot
twenty three inches = one foot
twenty four inches = one foot
twenty five inches = one foot
twenty six inches = one foot
twenty seven inches = one foot
twenty eight inches = one foot
twenty nine inches = one foot
thirty inches = one foot
thirty one inches = one foot
thirty two inches = one foot
thirty three inches = one foot
thirty four inches = one foot
thirty five inches = one foot
thirty six inches = one foot
thirty seven inches = one foot
thirty eight inches = one foot
thirty nine inches = one foot
forty inches = one foot
forty one inches = one foot
forty two inches = one foot
forty three inches = one foot
forty four inches = one foot
forty five inches = one foot
forty six inches = one foot
forty seven inches = one foot
forty eight inches = one foot
forty nine inches = one foot
fifty inches = one foot
fifty one inches = one foot
fifty two inches = one foot
fifty three inches = one foot
fifty four inches = one foot
fifty five inches = one foot
fifty six inches = one foot
fifty seven inches = one foot
fifty eight inches = one foot
fifty nine inches = one foot
sixty inches = one foot
sixty one inches = one foot
sixty two inches = one foot
sixty three inches = one foot
sixty four inches = one foot
sixty five inches = one foot
sixty six inches = one foot
sixty seven inches = one foot
sixty eight inches = one foot
sixty nine inches = one foot
seventy inches = one foot
seventy one inches = one foot
seventy two inches = one foot
seventy three inches = one foot
seventy four inches = one foot
seventy five inches = one foot
seventy six inches = one foot
seventy seven inches = one foot
seventy eight inches = one foot
seventy nine inches = one foot
eighty inches = one foot
eighty one inches = one foot
eighty two inches = one foot
eighty three inches = one foot
eighty four inches = one foot
eighty five inches = one foot
eighty six inches = one foot
eighty seven inches = one foot
eighty eight inches = one foot
eighty nine inches = one foot
ninety inches = one foot
ninety one inches = one foot
ninety two inches = one foot
ninety three inches = one foot
ninety four inches = one foot
ninety five inches = one foot
ninety six inches = one foot
ninety seven inches = one foot
ninety eight inches = one foot
ninety nine inches = one foot
one hundred inches = one foot



NOTES BY SYMBOL: "⊕"

1. PROPOSED JUNCTION BOX LOCATION IN CEILING SPACE. PROVIDE ONE BARRIERED BOX OR TWO BOXES TO SEPARATE THE ELEVATOR FEEDER FROM THE FIRE PUMP ATS CONTROL WIRING.
2. CORE WALL ABOVE CEILING LINE.
3. CORE WALL AT APPROXIMATELY 36\"/>



POWER PLAN - BUILDING 11 - BASEMENT
SCALE: 1/16" - 1'-0"

ADDENDUM #3	8-25-17
Revisions:	Date:

CONSULTANTS:



ARCHITECT/ ENGINEERS



BAIRD, HAMPTON & BROWN, INC.
ENGINEERING & SURVEYING
6300 Ridgley Place, Ste 700 Fort Worth, TX 76116 Tel: 817-338-1277 Fax: 817-338-9245
TBPE Firm 000044 E-Mail: mail@bhbinco.com Web Site: www.bhbinco.com TBPLS FIRM 10011300

Drawing Title:
POWER PLAN - BUILDING 11 - BASEMENT

Approved Project Director:
OFFICE OF CONSTRUCTION AND FACILITIES MANAGEMENT
WESTERN REGION

Project Title:
**UPGRADE EMERGENCY
POWER**
TASK ORDER NO. VA257-15-R-0634

Location:
3600 MEMORIAL BLVD., KERRVILLE, TX 78028

Date:
MAY 26, 2017

CONSTRUCTION SET

Project Number
671A4-15-123
Building Numbers
11, 90, 96

Drawing Number
E2
Dwg. _____ of _____

Office of
Construction
and Facilities
Management

