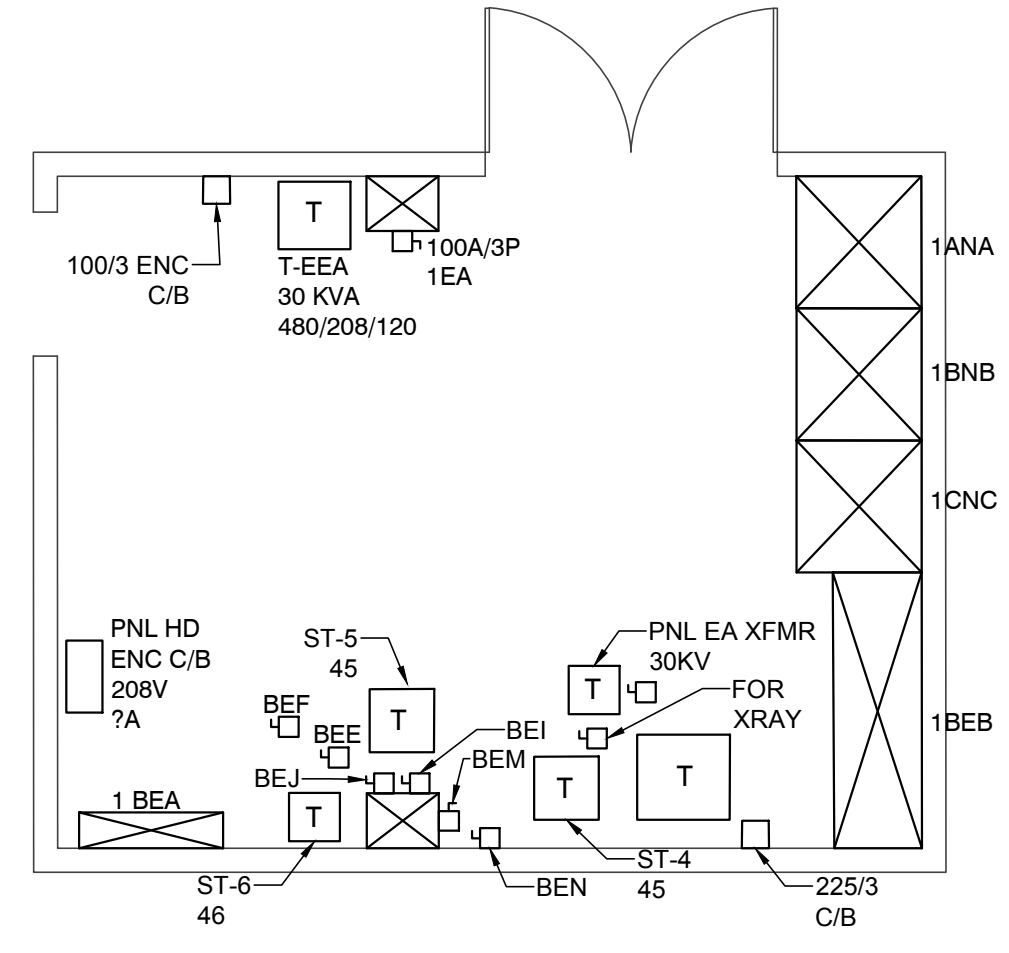
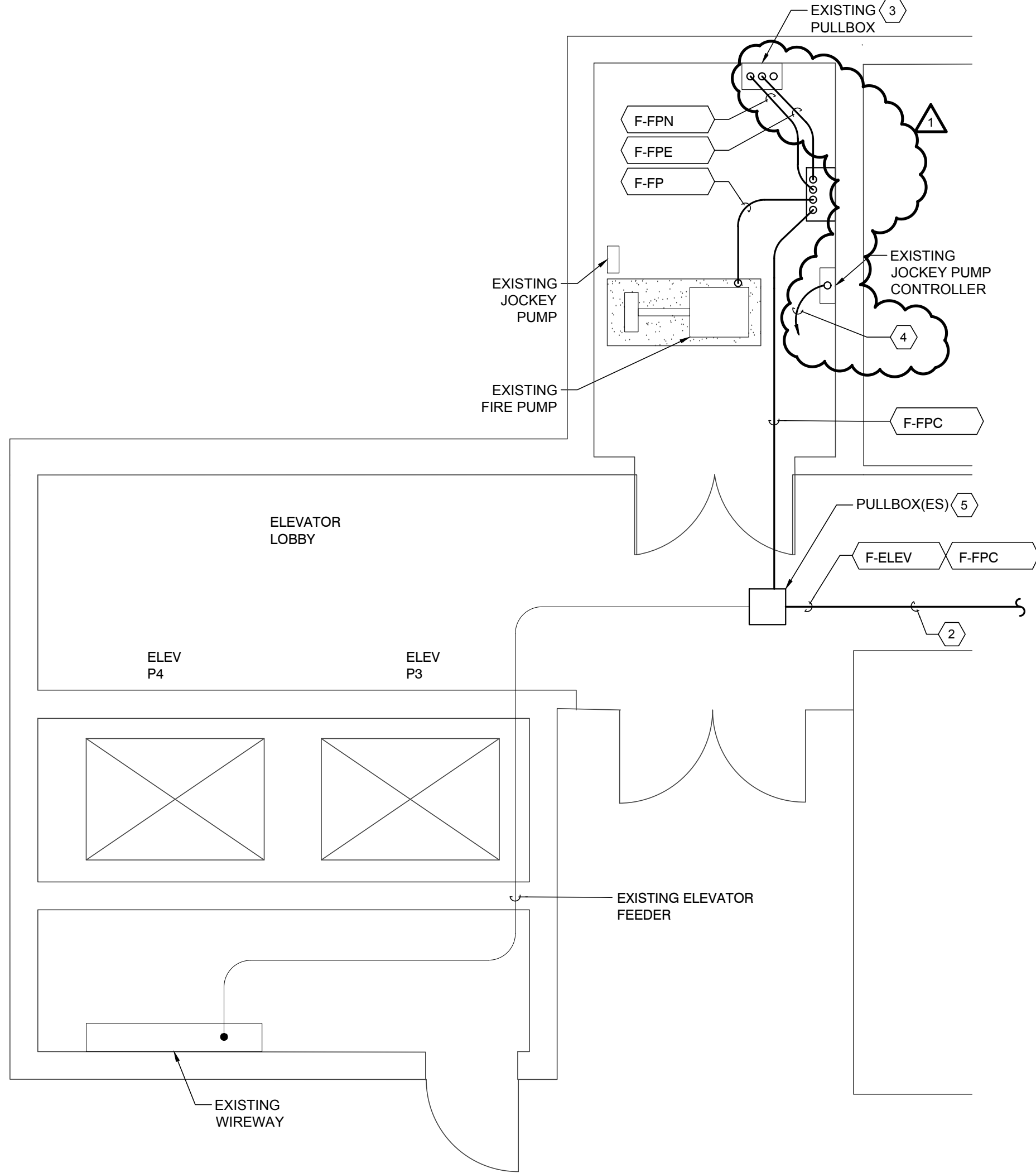
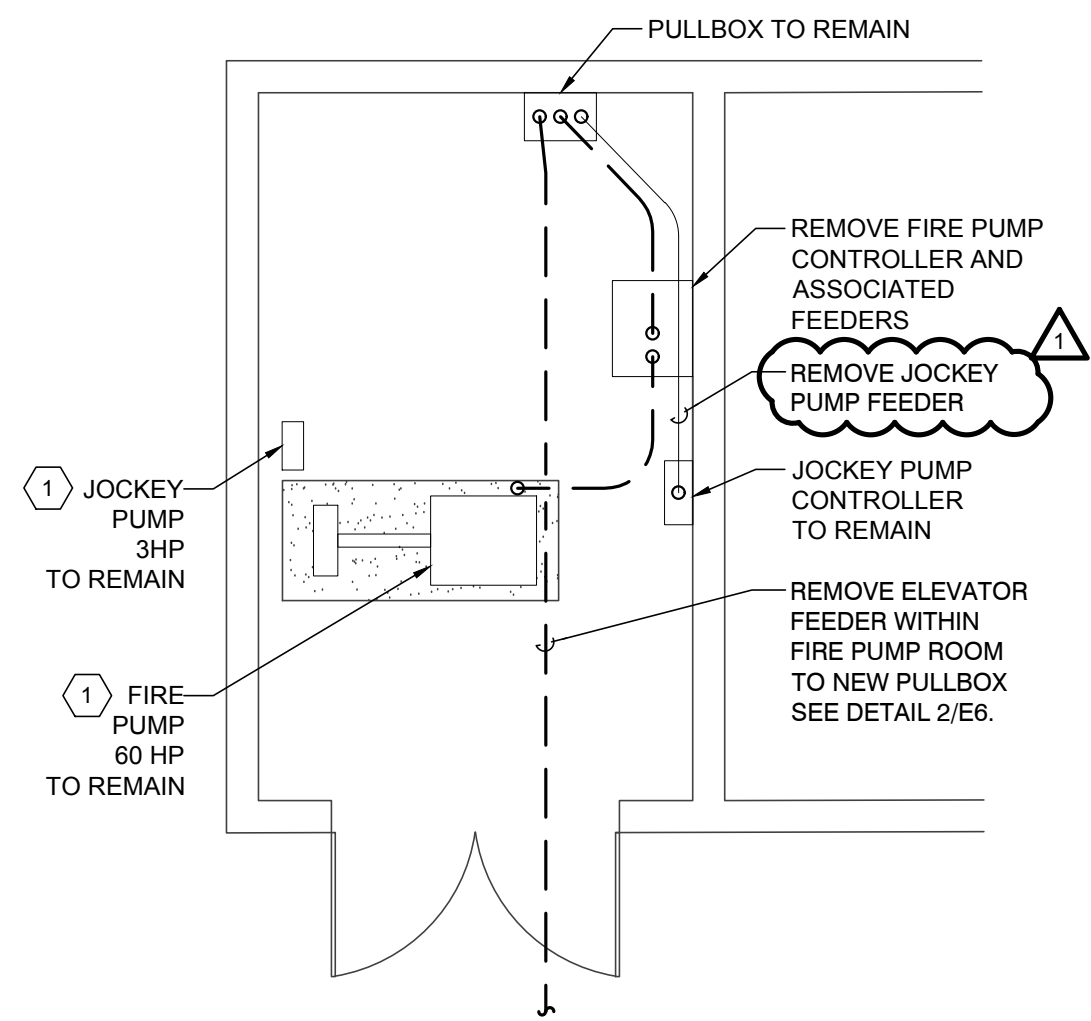


Aug 24, 2017 - 8:40am
Drawing File: E:\2015\000\000\2015\14\000\01 CAD\06 Elec\6-E6-E7 - Building 11 - Rooms.dwg Layout: E6 - BLDG 11 ROOMS

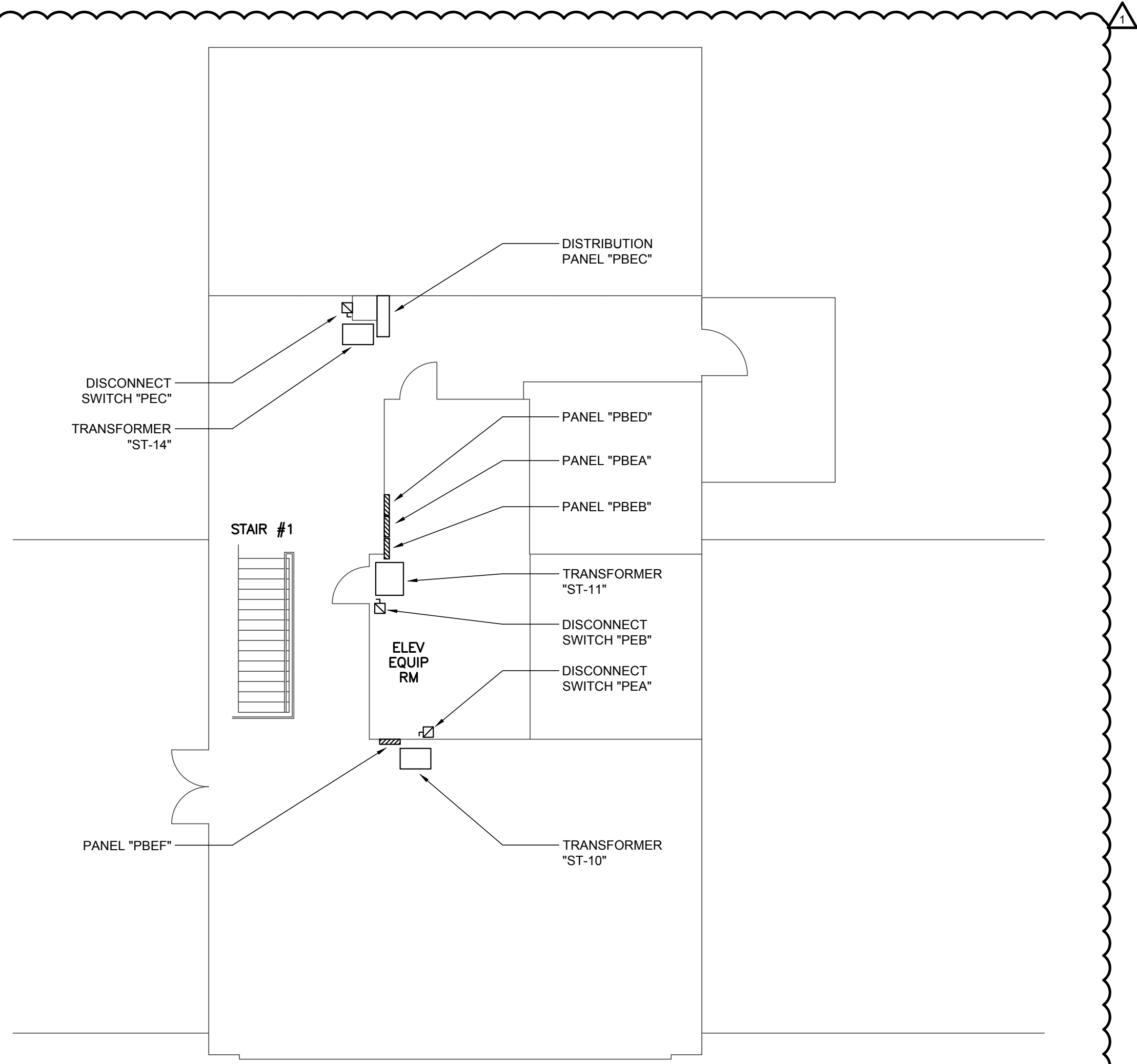
three eighths inch = one foot
one eighth inch = one foot
one quarter inch = one foot
one half inch = one foot
one inch = one foot
one and one half inches = one foot
two inches = one foot
three inches = one foot



- NOTES BY SYMBOL: " # "
1. PROVIDE TEMPORARY GENERATOR TO POWER FIRE PUMP AND JOCKEY PUMP DURING INSTALLATION OF NEW FIRE PUMP CONTROLLER AND ASSOCIATED FEEDERS.
 2. SEE SHEET E2 FOR CONTINUATION.
 3. PROVIDE VERTICAL BARRIER IN EXISTING PULLBOX TO SEPARATE THE FIRE PUMP NORMAL AND EMERGENCY POWER FEEDERS.
 4. BMP4-1,3,5 WITH 3/4"12 & 1/4"12 G, 3/4" C. PROVIDE NEW 15A, 3P CIRCUIT BREAKER IN "BMP4" TO MATCH EXISTING DEVICES IN EXISTING SPACE
 5. SPLICE NEW AND EXISTING ELEVATOR FEEDER IN NEW PULLBOX.

NOTE:
1. ALL EQUIPMENT SHOWN IS EXISTING TO REMAIN UNLESS NOTED OTHERWISE.

3 FRONT VAULT - POWER PLAN
SCALE: 1/4" - 1'-0" BUILDING 11



NOTE:
1. ALL EQUIPMENT SHOWN IS EXISTING TO REMAIN UNLESS NOTED OTHERWISE.

4 PENTHOUSE - POWER PLAN
SCALE: 1/8" - 1'-0" BUILDING 11

ADDENDUM #	8-25-17
Revisions:	Date:

CONSULTANTS:



ARCHITECT/ ENGINEERS
BHB BAIRD, HAMPTON & BROWN, INC.
ENGINEERING & SURVEYING
6300 Ridglea Place, Ste 700 Fort Worth, TX 76116 Tel: 817-338-1277 Fax: 817-338-9245
TBPE Firm 000044 E-Mail: mail@bhbcinc.com Web Site: www.bhbcinc.com TBPLS FIRM 10011300

Drawing Title:
ENLARGED PLANS
Approved Project Director:
OFFICE OF CONSTRUCTION AND FACILITIES MANAGEMENT
WESTERN REGION

Project Title:
UPGRADE EMERGENCY
POWER
TASK ORDER NO. VA257-15-R-0634
Location:
3600 MEMORIAL BLVD., KERRVILLE, TX 78028
Date:
MAY 26, 2017

Project Number
671A4-15-123
Building Numbers
11, 90, 96
Drawing Number
E6
Dwg. _____ of _____

Office of
Construction
and Facilities
Management
Department of
Veterans Affairs

CONSTRUCTION SET