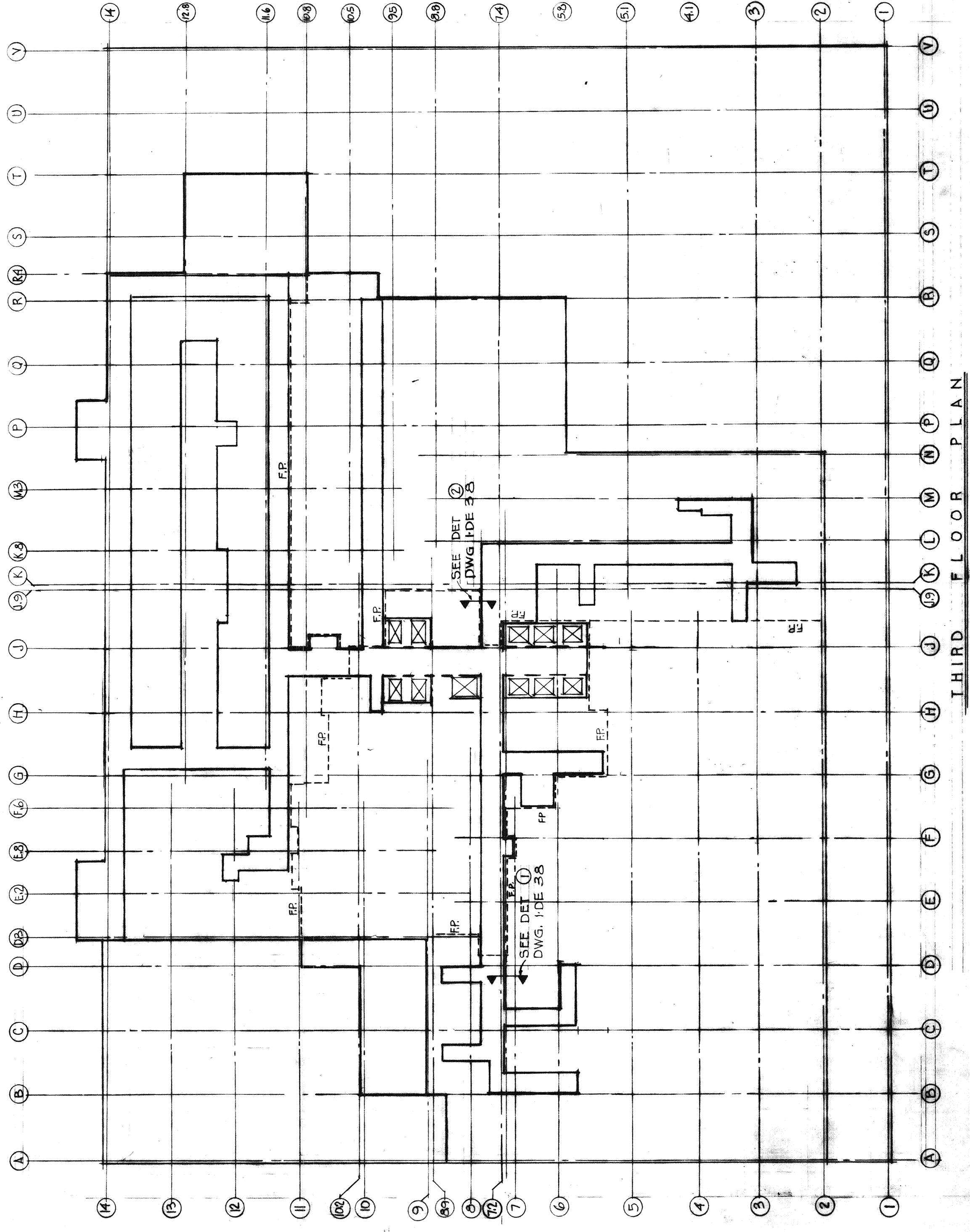
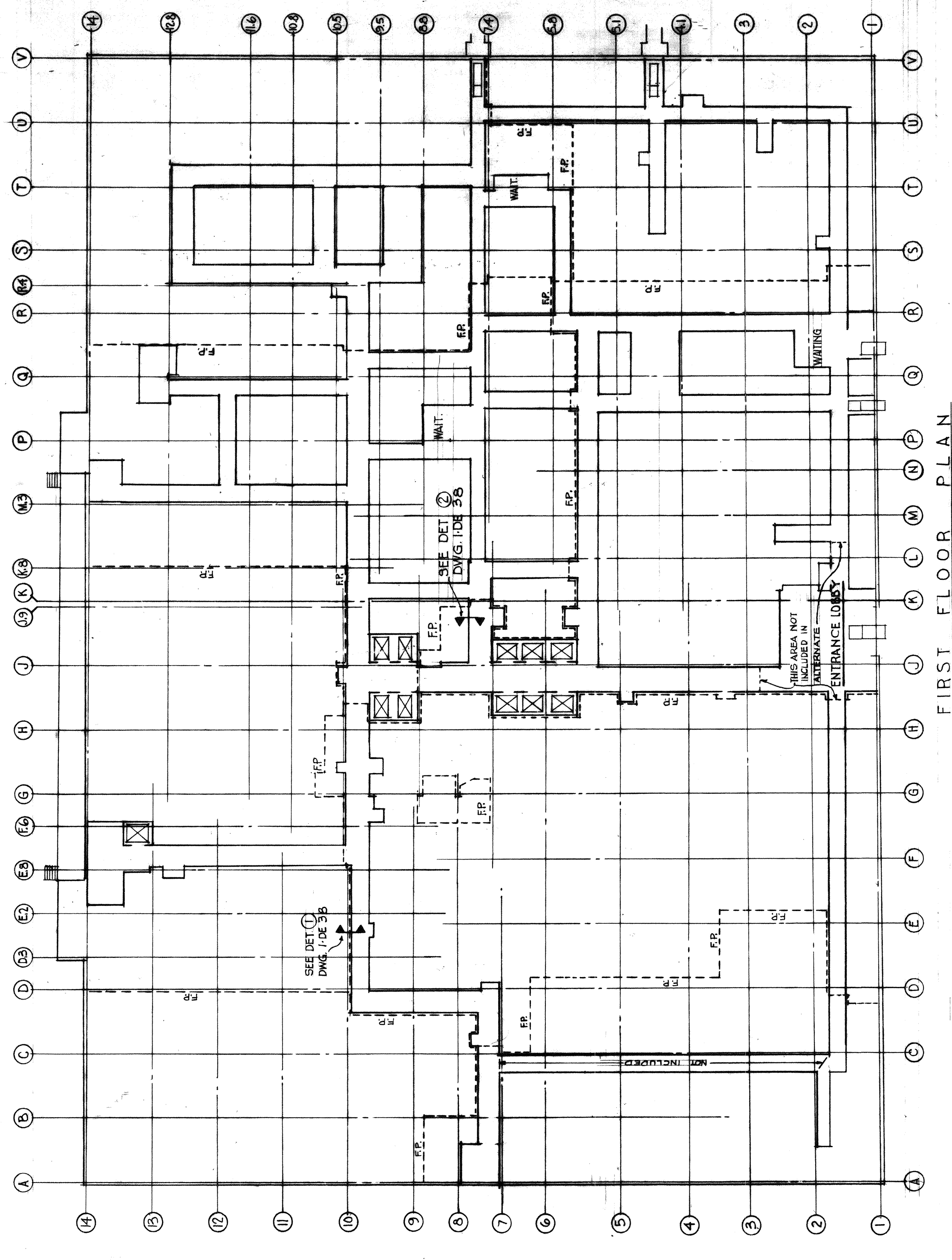


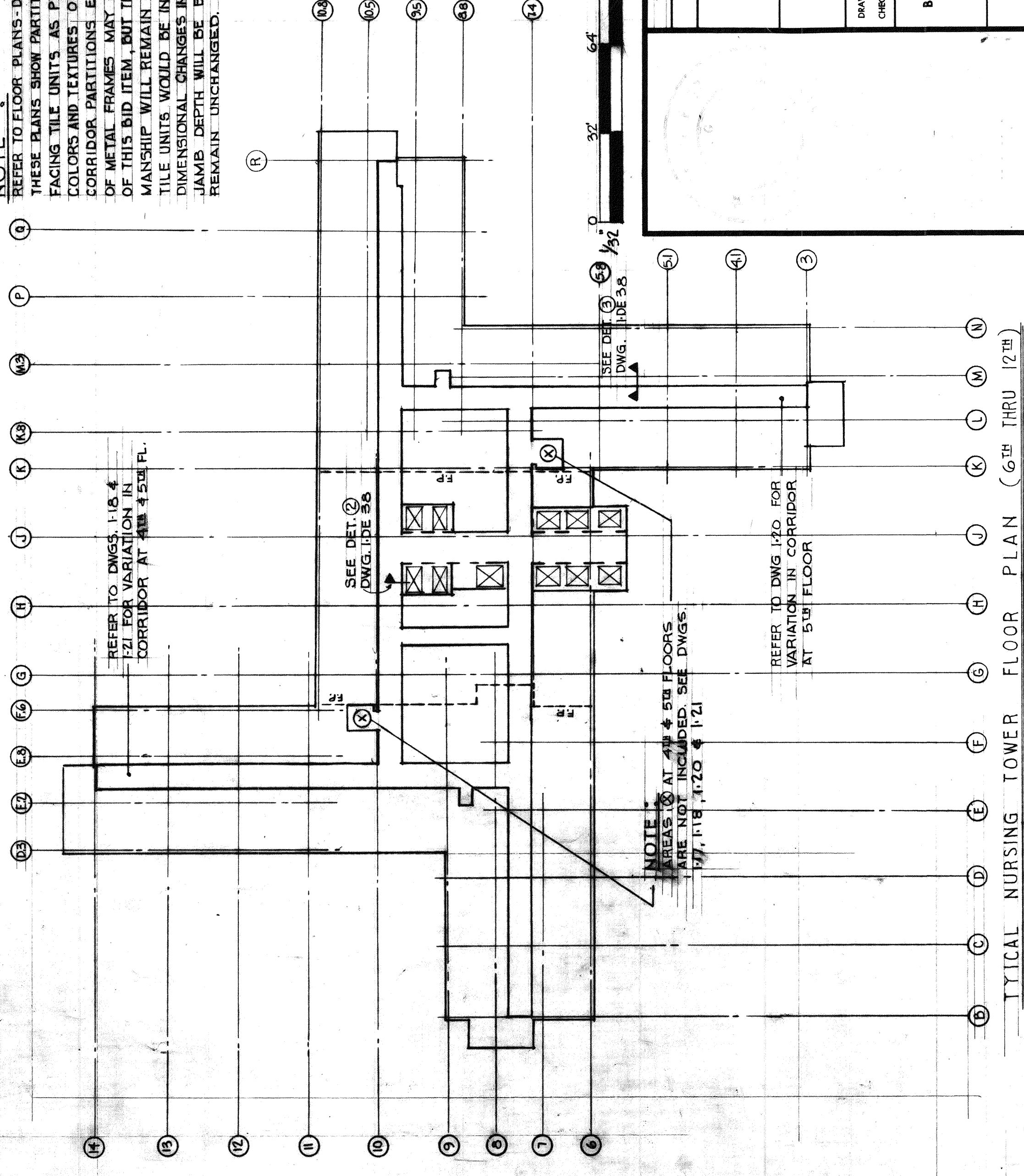
SECOND FLOOR PLAN



THIRD FLOOR PLAN



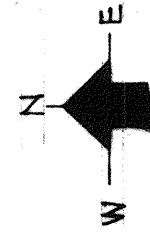
FIRST FLOOR PLAN



TYPICAL NURSING TOWER FLOOR PLAN (6th THRU 12th)

NOTE:  
1. REFER TO DWG. 106 36 FOR DOOR SIZE AND LOCATIONS.  
2. THESE PLANS SHOW PARTITIONS WHICH ARE TO BE BUILT OF STRUCTURAL  
FACING TILE UNITS AS PER BID ITEM NO. 1C.  
3. CORRIDOR PARTITIONS EFFECTED WILL REMAIN UNCHANGED. THE COLOR  
OF METAL FRAMES MAY BECOME CHANGED IN THE EVENT OF ACCEPTANCE  
OF THIS BID ITEM, BUT THE QUALITY OF FINISH MATERIALS AND WORK-  
MANSHIP WILL REMAIN AS NOW SPECIFIED. THE STRUCTURAL FACING  
TILE UNITS WOULD BE IN SOLID PASTEL COLORS IN SATIN FINISH.  
4. DIMENSIONAL CHANGES IN DOORS AND FRAMES INCLUDING ELEVATOR  
JAMB DEPTH WILL BE EFFECTED BUT THE MATERIAL AND FINISH WILL  
REMAIN UNCHANGED.

1-2-2-2387



AS BUILT  
CORRIDOR  
PARTITIONS ALTERNATE

BUILDING NO. 1	
2 - BID ITEM NO. 1C	
1062 BED	
M. S. & N. HOSPITAL	
VETERANS ADMINISTRATION	
MIAMI, FLORIDA	
REVISIONS	
DRAWN: J. R. Smith CHECKED: J. R. Smith DATE: May 5, 1964	PROJECT NO. 2-2-2-2387 DRAWING NUMBER <b>1-DE-39</b> SHEET: 147 OF 202 PROJ. NO. 2-2-2-2387
SMITH & KORACH BEISWENGER, HOCH & ARNOLD ARCHITECTS-ENGINEERS 721 N.W. 21 COURT - MIAMI, FLORIDA	
PROJECT DIRECTOR 	

RETURN TRAILERS TO PLAN FILES

FILE FOLDER 1062