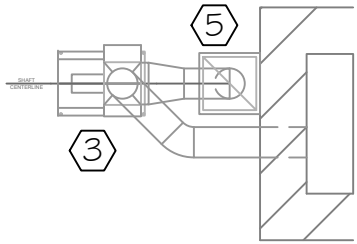


A NEW EXHAUST SYSTEM FOR EXISTING DIRTY LINEN CHUTE
NTS



B PLAN VIEW
NTS

GENERAL NOTES

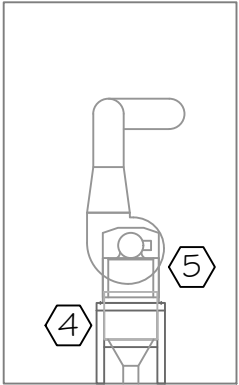
1. Measurements/locations are approximate and shall be verified by the Contractor. VA will not be held responsible for any error or variation in any measurements or other data listed.

SHEET NOTES

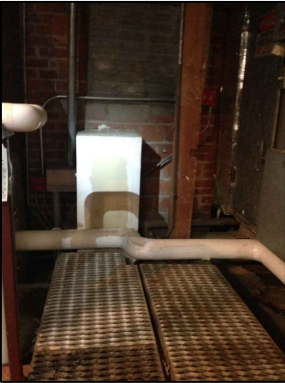
- 1 EXISTING CHUTE VENT DISCHARGES INTO EXISTING VENTILATION TOWER.
- 2 EXISTING 208/3PH ELECTRICAL PANEL . REFER TO SHEET E-1 FOR ELECTRICAL WORK.
- 3 INSTALL NEW EXHAUST FAN AND EXHAUST DUCT. CONNECT TO EXISTING CHUTE VENT. DISCHARGE INTO EXISTING VENTILATION TOWER (NEW PENETRATION REQ'D). DUCT SHALL BE MIN 8" DIA., GALVANIZED, AND INSTALLED/SEALED PER SMACNA STANDARDS FOR THE APPROPRIATE PRESSURE RATING.
- 4 PROVIDE/INSTALL NEW WELDED STEEL FRAME FOR MOUNTING NEW EXHAUST FAN. ANCHOR TO EXISTING FLOOR. PROVIDE VIBRATION ISOLATION PER FAN MFG RECOMMENDATIONS.
- 5 PROVIDE/INSTALL NEW HEPA FILTER UNIT WITH HEPA FILTER (MERV 17) AND PREFILTER (MERV 8) RATED FOR DESIGN CFM AT 1" W.G. CONNECT TO EXISTING LINEN CHUTE AND SUCTION SIDE OF NEW EXHAUST FAN.

MARK INFORMATION		FAN INFORMATION							MOTOR INFORMATION			
QTY	MARK	MODEL	VOLUME (CFM)	EXTERNAL SP (IN WG)	TOTAL SP (IN WG)	FAN RPM	OPERATING POWER (HP)	WEIGHT (LB.)	SIZE (HP)	V/C/P	ENCLOSURE	MOTOR RPM
1	EF MB 4-01	CSW-10-BI-41-10-0-10	800	3.0	3.0	2,908	0.78	77	1.0	208/60/3	TEFC	3600


SELECTED OPTIONS AND ACCESSORIES	
Isolation Mounting Kit Structural Steel Components with Permatecor Coatings VFD rated motor with class B or greater insulation. Backward Inclined Wheel	



C ELEVATION
NTS



D ELEVATION VIEW EXISTING
NTS

		Approved: Medical Center Facility Manager	Project Title NEW EXHAUST MBO4	Drawing Title NEW EXHAUST SYSTEM	Project Number 564-17-TBD	 Engineering Service Department of Veterans Affairs
					Building Number ONE (01)	
		Approved: Engineering Service Chief	Measures one inch or not to scale: 0 1"	Location VAMC - Fayetteville, AR	Drawing Number M-1	
Notes and/or Revisions:	Date		Scale: NTS	Checked ENG	Drawn ENG	
				Date 11 APR 17	Sheet 1 of 3	