

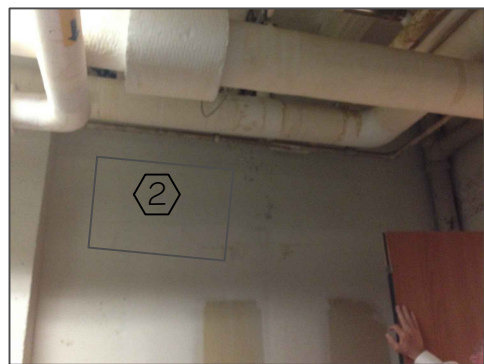
GENERAL NOTES

- 1. Measurements/locations are approximate and shall be verified by the Contractor. VA will not be held responsible for any error or variation in any measurements or other data listed.



SHEET NOTES

- 1 PROVIDE/INSTALL NEW 18"X12" COMBINATION FIRE/SMOKE DAMPER ASSEMBLY IN EXISTING WALL AT THIS APPROXIMATE LOCATION ("OUT OF WALL" MODEL/CONSTRUCTION) WITH 120V ACTUATOR (CONNECT TO NEAREST LIFE SAFETY/FIRE ALARM POWER CIRCUIT). INTERLOCK TO EXISTING FIRE ALARM SYSTEM FOR MONITORING. PROVIDE ARCHITECTURAL LOUVER FOR C20 SIDE (COR APPROVE COLOR). PROVIDE ALUMINUM LOUVER FOR MBO4 SIDE. DAMPER ASSEMBLY MUST MEET UL555 90 MIN AND UL555S LEAKAGE CLASS II.
- 2 INSTALL IN THIS APPROXIMATE LOCATION (COR TO APPROVE FINAL LOCATION) AT HEIGHT ABOVE FINISHED FLOOR TO PLACE LOUVER ON CORRIDOR SIDE APPROXIMATELY 2" BELOW CORRIDOR LAY-IN CEILING. NOTE THAT THIS REQUIRES A NEW OPENING IN AN EXISTING MASONRY WALL. PROVIDE SUPPORT FRAME IN OPENING SO AS TO NOT IMPOSE WEIGHT LOAD ON THE NEW FIRE DAMPER/SLEEVE.
- 3 TEST, ADJUST, BALANCE NOTES - PROVIDE CERTIFIED TAB TO ACHIEVE 700 CFM EXHAUST FROM MBO4. PROVIDE ALUMINUM SHEET METAL BLANK OFF IN NEW LOUVER TO ADJUST TRANSFER AIRFLOW THROUGH NEW FSD TO CFM REQUIRED TO ACHIEVE EXHAUST AIRFLOW AND REQUIRED NEGATIVE PRESSURE AT DOOR (-0.01" WG). VERIFY NEGATIVE PRESSURE RELATIONSHIP AT MBO4 FIRE DOOR OF MIN -0.01" WG.

**A** NEW TRANSFER AIR FOR EXISTING DIRTY LINEN CHUTE ROOM  
NTS



**B** ELEVATION VIEW EXISTING AT PROPOSED LOCATION  
NTS

		Approved: Medical Center Facility Manager	Project Title NEW EXHAUST MBO4	Drawing Title NEW XFER AIR FOR EXHAUST	Project Number 564-17-TBD		 Engineering Service Department of Veterans Affairs	
					Building Number ONE (01)			
		Approved: Engineering Service Chief	Measures one inch or not to scale: 	Scale: NTS	Location VAMC - Fayetteville, AR			Drawing Number M-2
Notes and/or Revisions:					Checked ENG	Drawn ENG		Date 11 APR 17
Date								
CUSTOM VA FORM 08-6231B, MAR 2008								