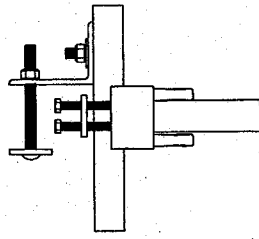


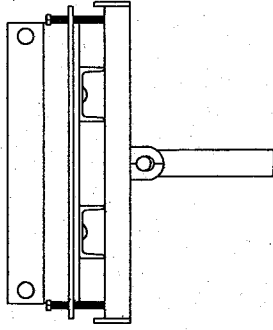
NOTES:

1. FINISH - HOT DIP GALV. PER ASTM A123
2. SHAFT MATERIAL - 150" ROUND CORNER SQUARE (RCS) STEEL BARS PER ASTM A29 AND ASTM A576 GRADE 1 10V45M WITH MILL CERT. AT 70 KSI (483,000 KN/M²) MIN YIELD STRENGTH.
3. HELIX MATERIAL - HOT ROLLED LOW CARBON STEEL PER ASTM A1018DR EQUAL WITH 55 KSI (345,000 KN/M²) MINIMUM YIELD STRENGTH.
3. MONUMENT MOUNTING BOX ACCORD TO DATES MONUMENTS RANGING IN SIZE FROM 10"X32"X3" TO 13-1/2"X42X4-1/4"
4. ALL WELDING TO BE BY WELDERS CERTIFIED PER AWS CODE D1.1
5. SEE TEST REPORT FOR ALLOWABLE AXIAL LOAD PER ICC ACCEPTANCE CRITERIA AC308 BY AN ACCREDITED IAS 17025 TESTING LABORATORY.
6. ALL MATERIAL IS MANUFACTURED AS PER ICC-ES, ACO ACCEPTANCE CRITERIA FOR QUALITY CONTROL DOCUMENTS.
6. ALL MATERIAL IS MANUFACTURED AS PER



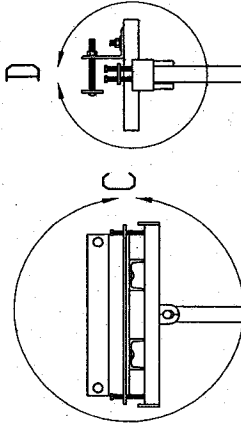
CLAMP DETAIL D

N.T.S.



CLAMP DETAIL C

N.T.S.



ANCHOR DETAIL

N.T.S.

GRADE AND TURF ESTABLISHED AS RQD.

USUALLY DISTURBED COMPACTED EARTH

22" MAX WIDTH EXCAVATION FOR ANCHOR AND BOX OR AS APPROVED



COMPACTED STONE AS APPROVED

DEPTH AS MINIMALLY REQUIRED TO ACHIEVE HEADSTONE HEIGHT AS APPROVED BY ENGINEER TYPICALLY 12" TO 20"

CLAMP SHOWN IS REPRESENTATIVE, VARIATIONS MAY BE APPROVED PROVIDED THE ASSEMBLY MEETS THE REQUIREMENTS OF THE SPECIFICATION.

SPECIAL NOTE:

ALL EXCAVATION SIZES AND LOCATIONS TO MEET WITH THE APPROVAL OF THE NCA ENGINEER. THESE LIMITS MAY BE UNIQUE FOR EACH CEMETERY

PLACED ANCHOR DETAIL

N.T.S.

APPROVED CONCEPT DESIGN
NCA MSN IV

DRAWING NUMBER

SHEET NO.

SHEET 1

1 OF 1

PRODUCT DESCRIPTION

CLAMP ANCHOR
CONCEPT

SCALE

DRAWN BY: JPQ NTS

DATE

5/03/12