



**St. Cloud VA**  
**Health Care System**  
 Brainerd | Montevideo | Alexandria

100% CONSTRUCTION DOCUMENTS - FOR CONSTRUCTION



three inches = one foot  
one and one half inches = one foot  
one inch = one foot  
three quarters inch = one foot  
one half inch = one foot  
three eighths inch = one foot  
one quarter inch = one foot  
one eighth inch = one foot

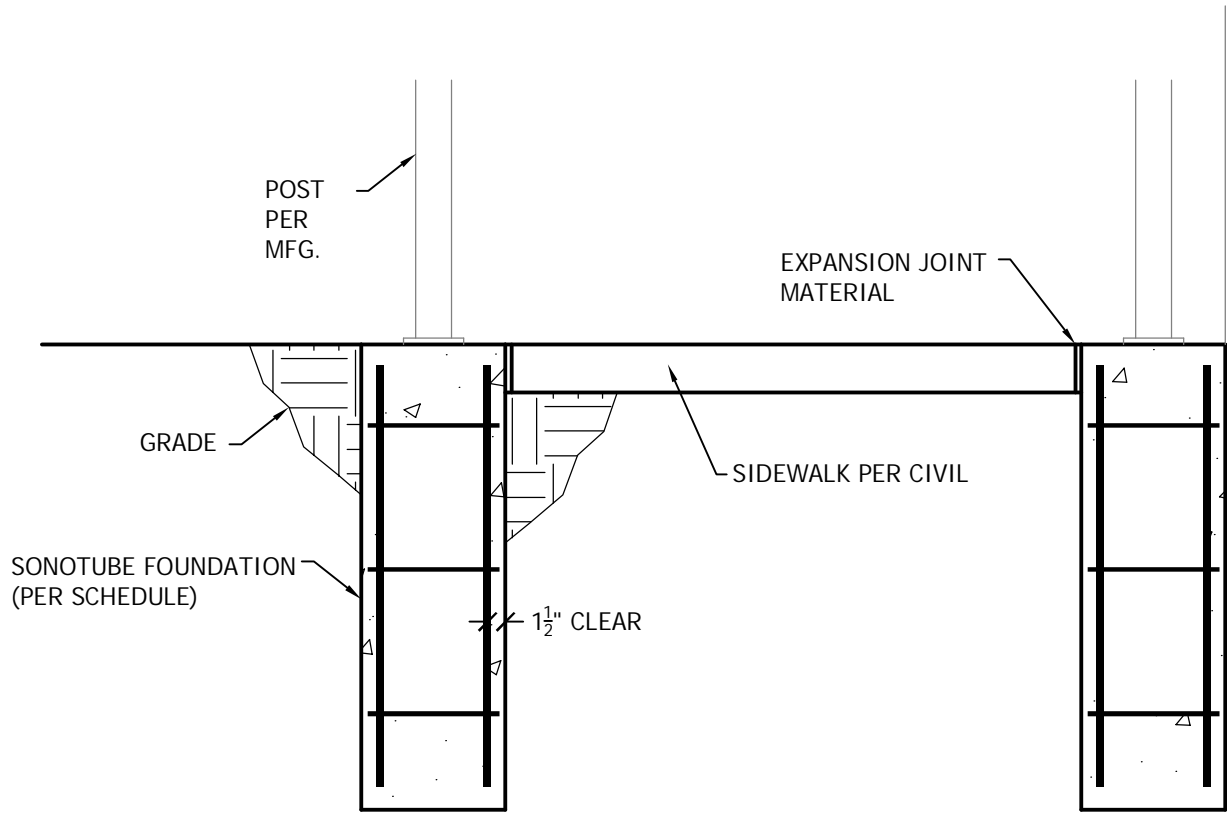
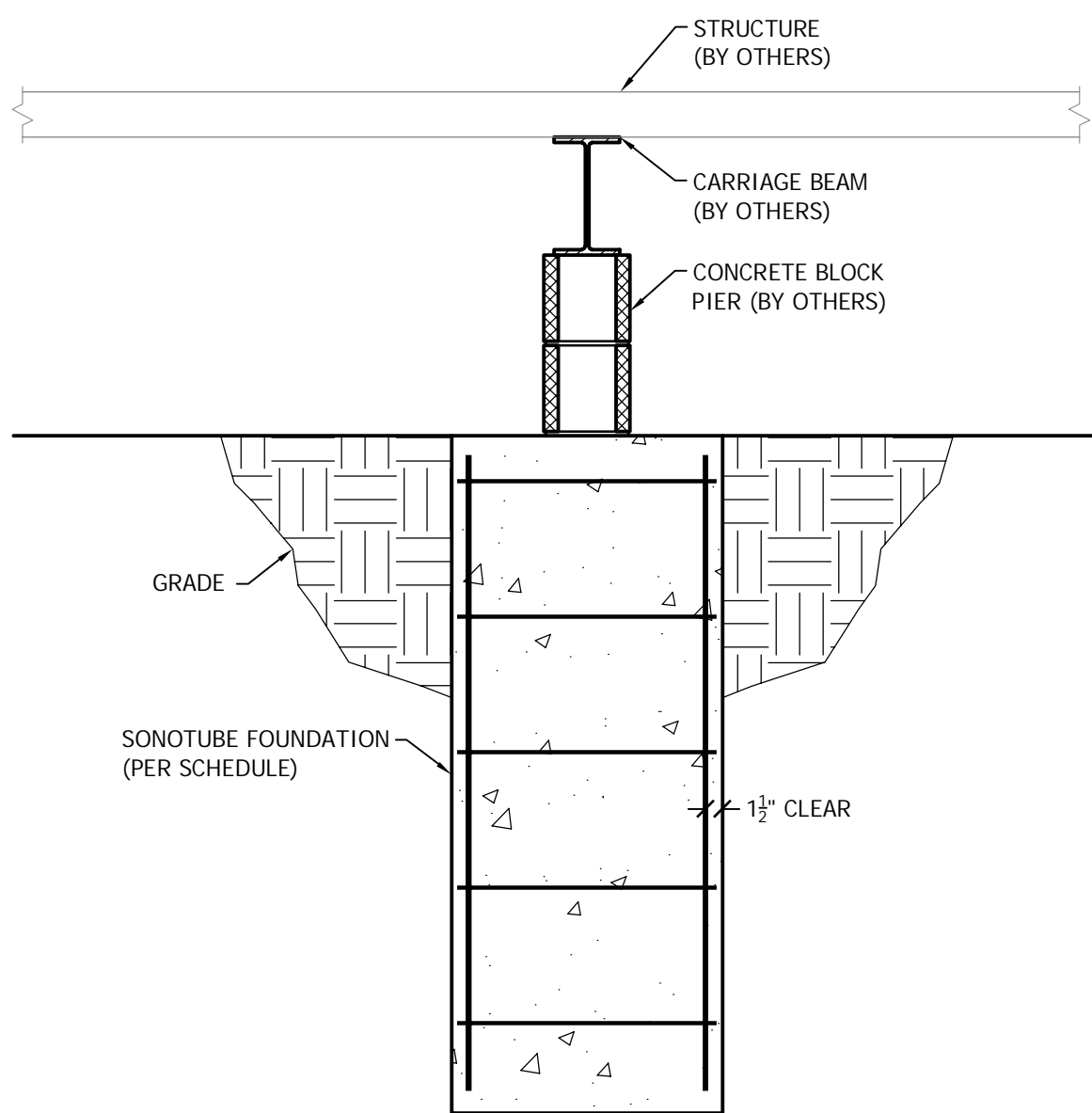
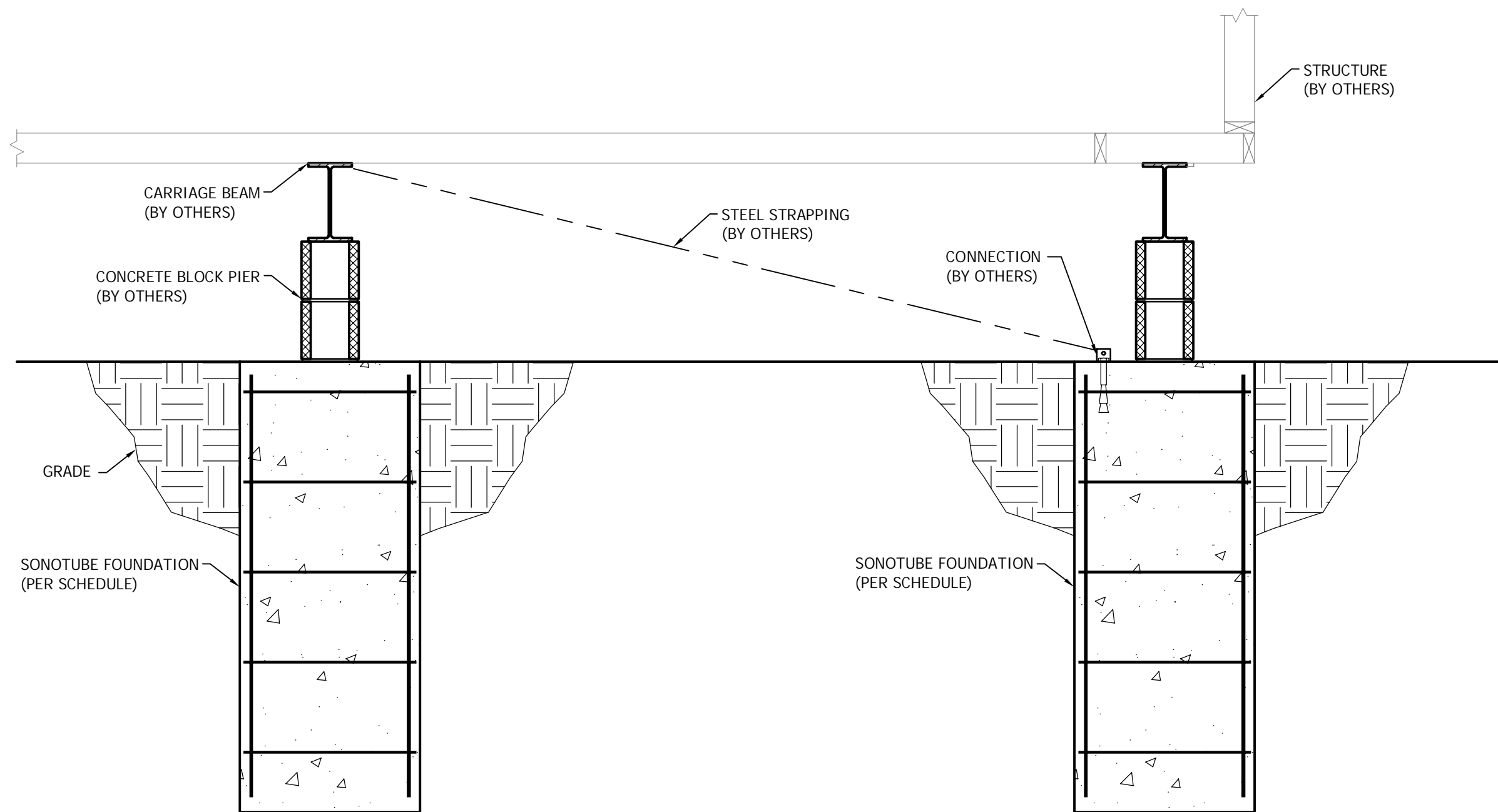
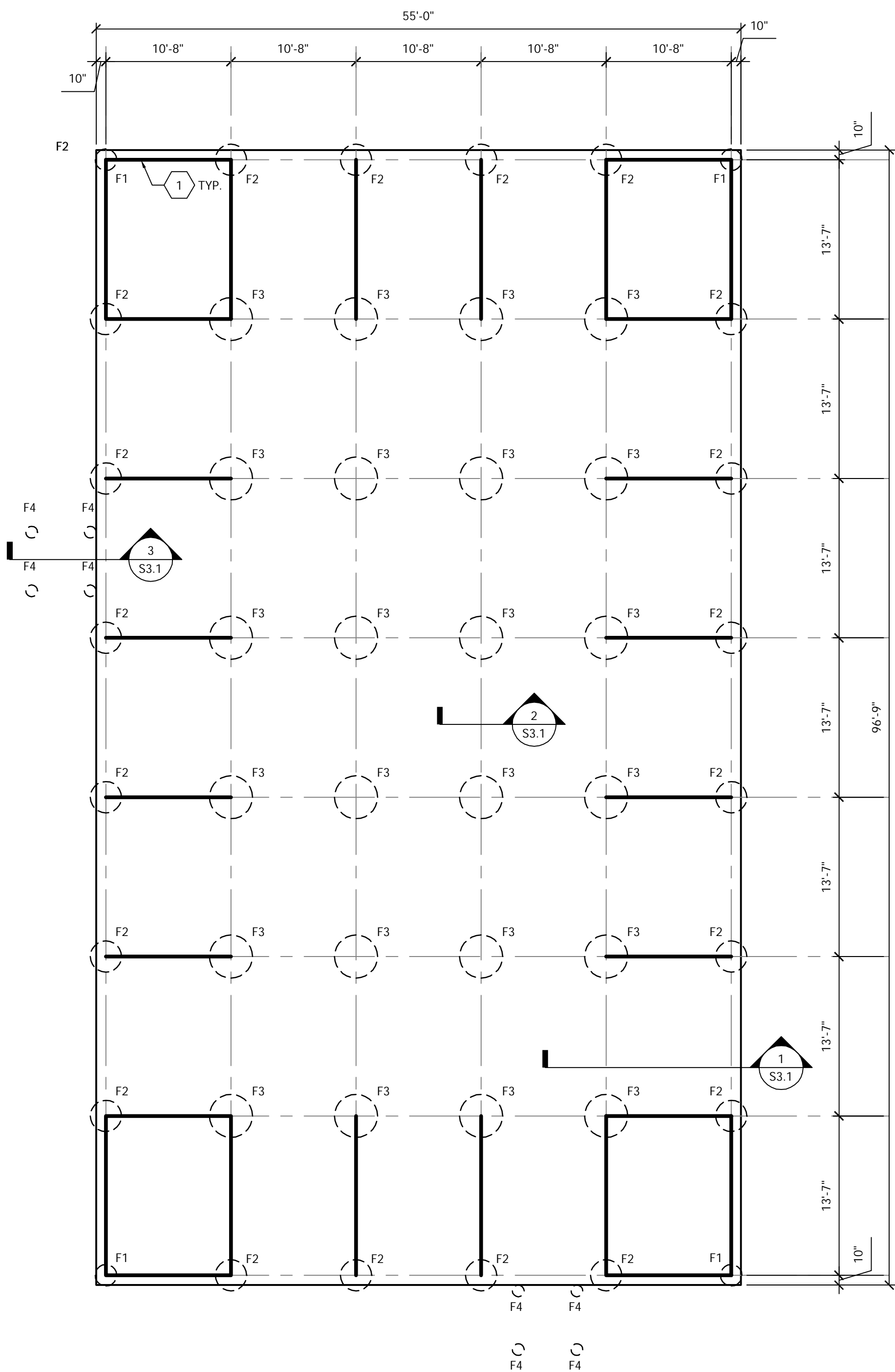
FOUNDATION NOTES

1. REFER TO SHEET S0.1 FOR GENERAL NOTES AND SPECIFICATIONS.  
2. REFER TO SHEET S3.1 FOR TYPICAL FOUNDATION DETAILS.  
3. B.O.F. - MIN. 4'-0" BELOW GRADE.  
4. FOUNDATION SIZES AND SPACING BASED UPON ASSUMED REACTIONS. SIZE AND SPACING OF FOUNDATIONS TO BE VERIFIED BY ENGINEER PRIOR TO CONSTRUCTION.

KEYNOTES

1. LATERAL BRACING BY OTHERS.

SONOTUBE FOUNDATION SCHEDULE			
MARK	DIAMETER	REINF.	TRANS
F1	22"Ø	(6) #5	#3 BARS @ 10" O.C.
F2	32"Ø	(10) #5	#3 BARS @ 10" O.C.
F3	44"Ø	(14) #6	#3 BARS @ 12" O.C.
F4	12"Ø	(4) #4	#3 BARS @ 8" O.C.



100% CONSTRUCTION DOCUMENTS - FOR CONSTRUCTION

NO.	REVISION	DATE

**Design Tree**  
ENGINEERING AND  
LAND SURVEYING

120 17th Avenue W.  
Alexandria, MN 56308  
(320) 762-1290

3339 W. St. Germain, Suite 250  
St. Cloud, MN 56301  
(320) 217-5557 (PHONE)  
(320) 217-5597 (FAX)

**JLG**  
architects

Alexandria  
525 Broadway Street  
Alexandria, MN 56308  
phone 320.759.9030  
facsimile 320.759.9062

www.jlgarchitects.com  
copyright © 2015

STAMP/REAL:

I HEREBY CERTIFY THAT THIS PLAN  
SPECIFICALLY AND EXCLUSIVELY PREPARED BY  
ME OR UNDER MY DIRECT SUPERVISION, AND  
THAT I AM A DULY LICENSED PROFESSIONAL  
ENGINEER UNDER THE LAWS OF THE STATE OF  
MINNESOTA.

DATE: 03.15.2016 REG. NO. 44108

SEE: A. NICHOLSON, PE

DRAWING TITLE  
FOUNDATION PLAN

PROJECT TITLE  
OPTOMETRY TRAILER

DATE: 03.15.2016  
PROJECT NO.: 656-15-267

BUILDING NO.: 48  
CHECKED BY: JAN  
DESIGNED BY: JPS

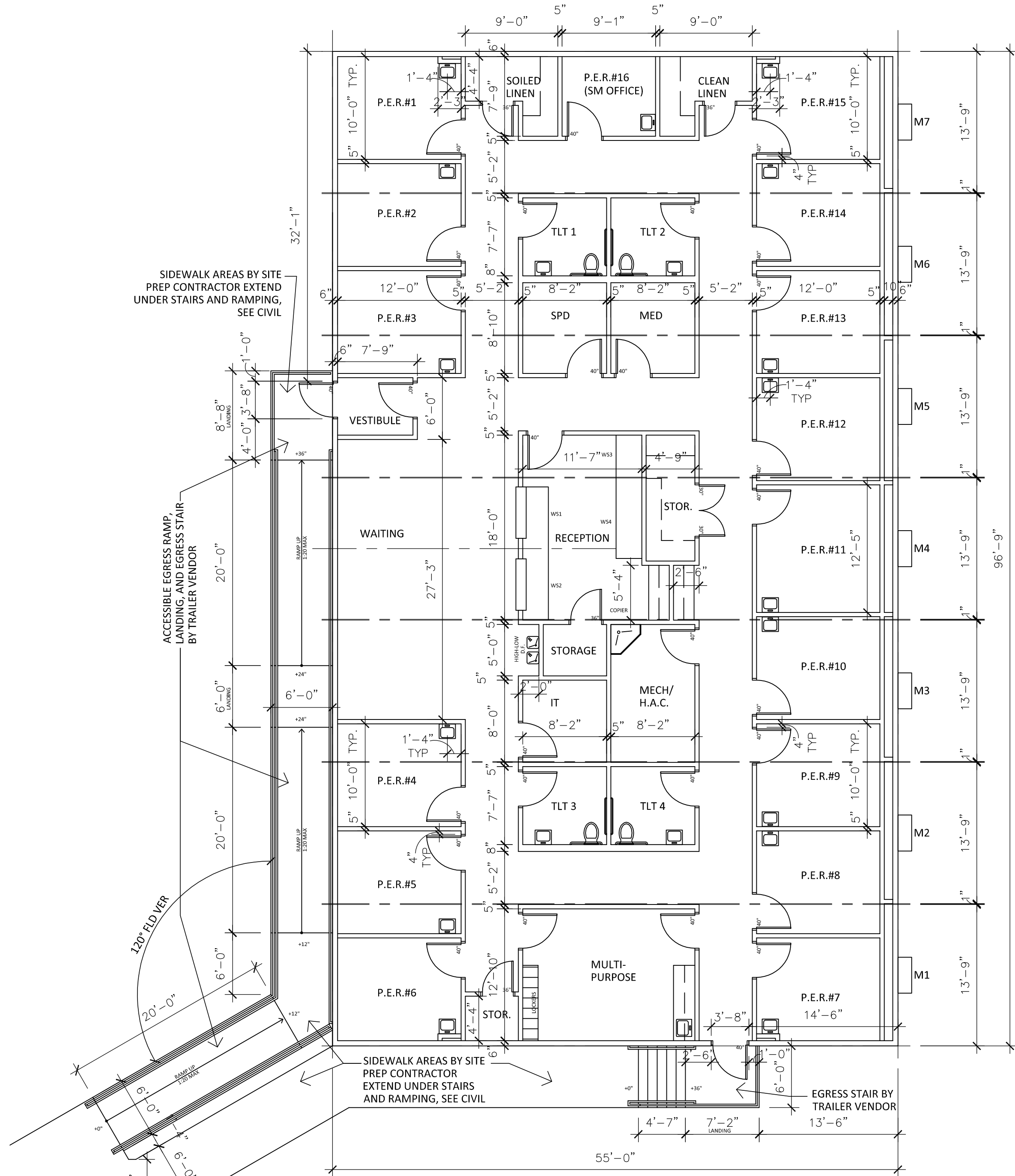
LOCATION: V.A. MEDICAL CENTER  
ST. CLOUD, MN 56303

DRAWING NO.: S1.1

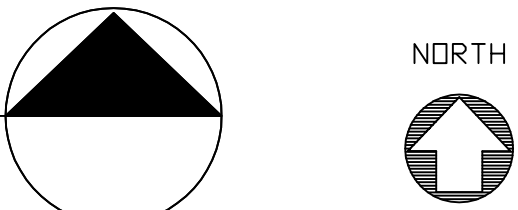
**St. Cloud VA**  
Health Care System

Brainerd | Montevideo | Alexandria

three eighths inch = one foot  
one quarter inch = one foot  
one eighth inch = one foot  
one half inch = one foot  
three quarters inch = one foot  
one inch = one foot  
one and one half inches = one foot  
two inches = one foot  
three inches = one foot



**1 MODULAR BUILDING PLAN**  
**AS1** SCALE = 1/8" = 1'-0" (FOR REFERENCE ONLY)



NOTES:  
1) TRAILER MODULES PROVIDED AND INSTALLED BY TRAILER VENDOR OVER PREPARED BUILDING SITE.  
2) STAIR AND RAMP ACCESS TO MODULAR BUILDING TO BE PROVIDED AND INSTALLED BY TRAILER VENDOR.

100% CONSTRUCTION DOCUMENTS - FOR CONSTRUCTION

<div>REVISION</div> <div>DATE</div>		<div><b>JLG</b> architects</div> <div>Alexandria 525 Broadway Street Alexandria, MN 56308 phone 320.759.9030 facsimile 320.759.9062 www.jlgarchitects.com copyright © 2016</div>		<div><small>STAMP/SEAL I HEREBY CERTIFY THAT THIS PLAN SPECIFICATION, OR REPORT WAS PREPARED BY ME OR UNDER MY DIRECT SUPERVISION AND THAT I AM A DULY LICENSED ARCHITECT UNDER THE LAWS OF THE STATE OF MINNESOTA</small>  DANIEL J. MILLER, AIA DATE: 03-15-2016 REG. NO. MN 43619</div>		<div>DRAWING TITLE MODULAR BUILDING PLAN (FOR REFERENCE ONLY)</div>		<div>PROJECT TITLE OPTOMETRY TRAILER SITE PREP</div>		<div>DATE 03/15/2016 PLOT SCALE PROJECT NO. 656-15-267 BUILDING NO. CHECKED BY D.J.M. DRAWN A.L.W. CADD FILE DRAWING NO. AS1</div>		<div> VAMC SAINT CLOUD MN</div>	
-------------------------------------	--	--	--	--	--	---	--	--	--	--	--	-------------------------------------	--



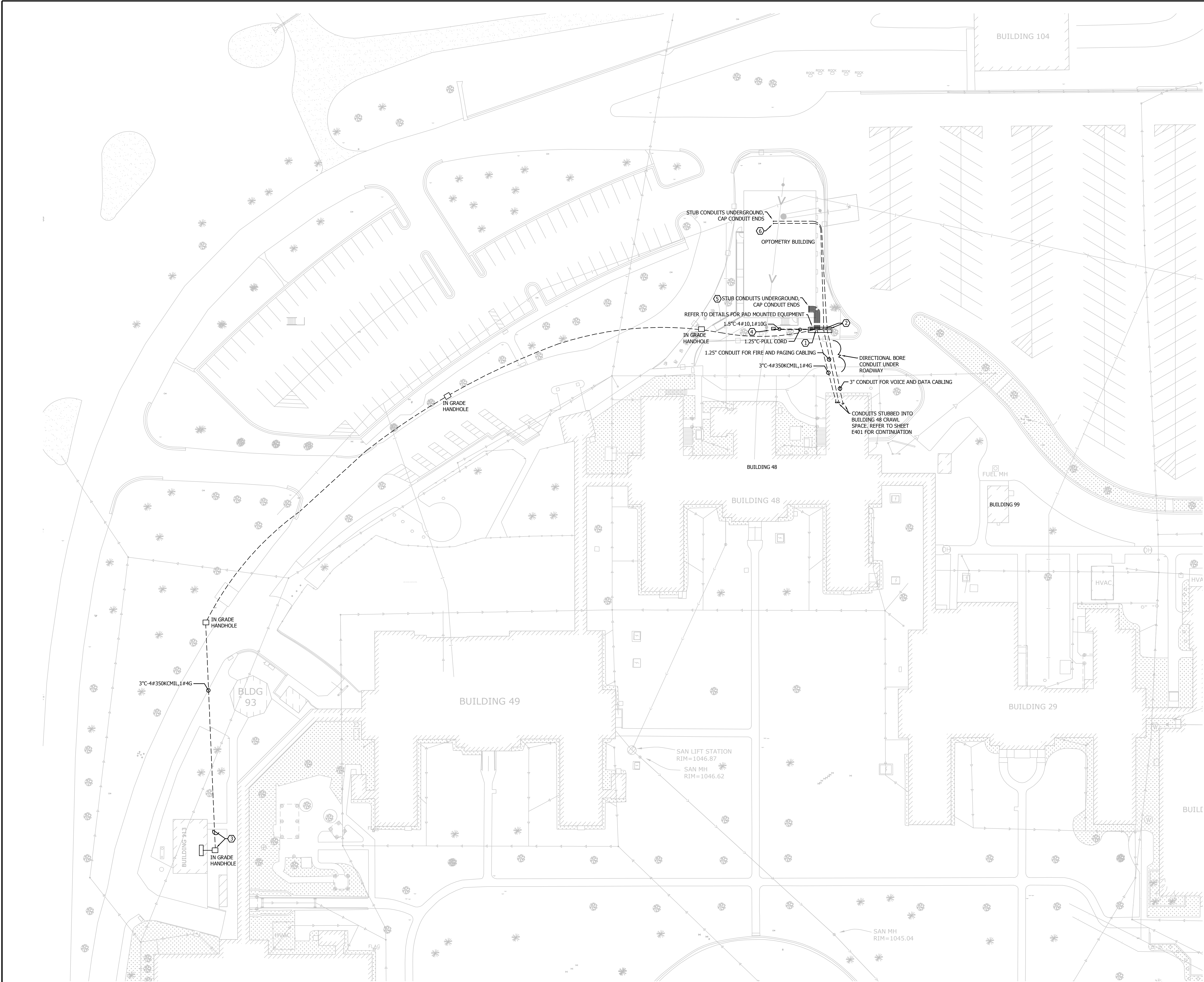


ELECTRICAL ABBREVIATIONS LIST									
1P	1 POLE (2P, 3P, 4P, ETC.)	DCP	DOMESTIC WATER CIRCULATING PUMP	HT	HEIGHT	NEMA	NATIONAL ELECTRICAL MANUFACTURERS ASSOCIATION	SWBD	SWITCHBOARD
A	AMPERE	DEPT	DEPARTMENT	HTR	HEATING			SYS	SYMMETRICAL SYSTEM
AC	ABOVE COUNTER OR AIR CONDITIONER	DET	DETAIL	HV	HIGH VOLTAGE	NFOS	NON-FUSED SAFETY	TEL	TELEPHONE
ACLG	ABOVE CEILING	DIA	DIAMETER	HVAC	HEATING, VENTILATING AND AIR CONDITIONING			TELE	TELEPHONE/DATA
ADO	AIR CONDITIONER DOOR OPENER	DISC	DISCONNECT	IC	ISOLATED GROUND	NIC	NOT IN CONTRACT	TERM	TERMINAL
AF	AMP FRAME	DIST	DISTRIBUTION	HWP	HYDRAONIC WATER PUMP	NL	NIGHT LIGHT	TL	TWIST LOCK
AFB	ABOVE FINISHED FLOOR	DN	DOWN	INT	INTERTRIPPING CAPACITY	NOC	NORMALLY OPEN	TR	TAMPER RESISTANT
AFG	ABOVE FINISHED GRADE	DRK	DAMPER	IG	ISOLATING GROUND	NPS	NORMAL POWER FACTOR	T-ST	THERMOSTAT
AFI	ARC FAULT CIRCUIT INTERRUPTER	DWS	DOUBLE THROW DRAWING	INC	INCANDESCENT	NTS	NOT TO SCALE	TTC	TELEPHONE TERMINAL
AHU	AIR HANDLING UNIT	DWG	DRAWING	INCAND	INCANDESCENT	OH	OVERHEAD	TV	TELEVISION
ALT	ALTERNATE	E	ELECTRICAL CONTRACTOR	INFR	INFRARED	OL	OVERLOADS	TVTC	TELEVISION TERMINAL
AMP	AMPERE	ELEC	ELECTRIC, ELECTRICAL	INT	INTERLOCK	PA	PUBLIC ADDRESS	TYC	TYPICAL
AMPL	AMPLIFIER	ELEV	ELEVATOR	J-BOX	JUNCTION BOX	PB	PULL BOX OR PUSHBUTTON	UP	UNDER COUNTER
ANNU	ANNUNCIATOR	EM	EMERGENCY	KV	KILOVOLT	PE	PEDESTAL	UE	UNDERGROUND ELECTRICAL
ANUN	ANNUNCIATOR	EMS	ENERGY MANAGEMENT SYSTEM	KVAR	KILOVOLT-AMPERE	PF	POWER FACTOR	UH	UNDERGROUND
APPROX	APPROXIMATELY	ETB	ELECTRICAL METAL TUBING	KVA	KILOVOLT-AMPERE REACTIVE	PH	PHASE	UH	UNDERGROUND
AQ-STAT	AQUASTAT	EP	ELECTRIC PNEUMATIC EQUIPMENT	KW	KILOWATT	PV	POST INDICATING VALVE	UN	UNLESS NOTED OTHERWISE
ARCH	ARCHITECT, ARCHITECTURAL	EQ	EQUIPMENT	KWH	KILOWATT HOUR	PV	PANEL	UT	UTILITY
AT	AMP SWITCH	EXIST	EXISTING	LOC	LOCATE OR LOCATION	PAI	POWER POLE	UNL	UNLESS NOTED OTHERWISE
ATS	AUTOMATIC TRANSFER SWITCH	EXP	EXHAUST	LTG	LIGHTING	PRE	PRIMARY	UV	ULTRAVIOLET
AUTO	AUTOMATIC	EXP	EXHAUST	LTG	LIGHTING	PRO	PROTECTION	V	VOLT
AUX	AUXILIARY	ESG	ENERGY SAVING PERFORMANCE CONTRACT	LTG	LIGHTING	PRV	POWER ROD VENTILATOR	VA	VOLT-AMPERES
AV	AUDIO VISUAL	FA	FIRE ALARM	LVS	LOW VOLTAGE	PT	POTENTIAL TRANSFORMER	VD	VIDEO DISPLAY TERMINAL
AWG	AMERICAN WIRE GAUGE	FAB	FIRE ALARM BOOSTER POWER SUPPLY PANEL	LVS	LOW VOLTAGE	PVC	POLYVINYL CHLORIDE (CONDUIT)	VF	VERTICAL
BATT	BATTERY	FAC	FIRE ALARM CONTROL PANEL	MAGS	MAGNETIC STARTER	PWR	POWER	VFD	VARIABLE FREQUENCY DRIVE
BD	BOARD	FCU	FAN COIL UNIT	MCS	MOMENTARY CONTACT	QUN	QUANTITY	VOL	VOLUME
BLOG	BUILDING	EXT	EXTENSION	MCC	MECHANICAL CONTACT			W	WATT
BMS	BUILDING MANAGEMENT SYSTEM	FLR	FLOOR	MCCB	MAIN CIRCUIT BREAKER	RCPT	RECEPTACLE	WG	WIRE GUARD
C	CONDUIT	FLUR	FLOURESCENT	MCCB	MAIN CIRCUIT BREAKER	RECQ	REQUIRED	WH	WATER HEATER
CAB	CABINET	FLUR	FLOURESCENT	MCCB	MAIN CIRCUIT BREAKER	RSC	RIGID STEEL CONDUIT	WO	WITHOUT
CAT	CATALOG	FLUR	FLOURESCENT	MCCB	MAIN CIRCUIT BREAKER	RSC	RIGID STEEL CONDUIT	WO	WITHOUT
CATV	CABLE TELEVISION	FLUR	FLOURESCENT	MCCB	MAIN CIRCUIT BREAKER	RSC	RIGID STEEL CONDUIT	WO	WITHOUT
CB	CIRCUIT BREAKER	FLUR	FLOURESCENT	MCCB	MAIN CIRCUIT BREAKER	RSC	RIGID STEEL CONDUIT	WO	WITHOUT
CCTV	CLOSED CIRCUIT TELEVISION	FLUR	FLOURESCENT	MCCB	MAIN CIRCUIT BREAKER	RSC	RIGID STEEL CONDUIT	WO	WITHOUT
CKT	CIRCUIT	FLUR	FLOURESCENT	MCCB	MAIN CIRCUIT BREAKER	RSC	RIGID STEEL CONDUIT	WO	WITHOUT
CLG	CEILING	FLUR	FLOURESCENT	MCCB	MAIN CIRCUIT BREAKER	RSC	RIGID STEEL CONDUIT	WO	WITHOUT
COMB	COMBINATION	FLUR	FLOURESCENT	MCCB	MAIN CIRCUIT BREAKER	RSC	RIGID STEEL CONDUIT	WO	WITHOUT
CMR	COMPRESSOR	FLUR	FLOURESCENT	MCCB	MAIN CIRCUIT BREAKER	RSC	RIGID STEEL CONDUIT	WO	WITHOUT
CONN	CONNECTION	FLUR	FLOURESCENT	MCCB	MAIN CIRCUIT BREAKER	RSC	RIGID STEEL CONDUIT	WO	WITHOUT
CONSTR	CONSTRUCTION	FLUR	FLOURESCENT	MCCB	MAIN CIRCUIT BREAKER	RSC	RIGID STEEL CONDUIT	WO	WITHOUT
CONT	CONTINUATION OR CONTINUOUS	FLUR	FLOURESCENT	MCCB	MAIN CIRCUIT BREAKER	RSC	RIGID STEEL CONDUIT	WO	WITHOUT
CONTR	CONTRACTOR	FLUR	FLOURESCENT	MCCB	MAIN CIRCUIT BREAKER	RSC	RIGID STEEL CONDUIT	WO	WITHOUT
CONV	CIRCULATING PUMP	FLUR	FLOURESCENT	MCCB	MAIN CIRCUIT BREAKER	RSC	RIGID STEEL CONDUIT	WO	WITHOUT
CR	CATHODE RAY TUBE	FLUR	FLOURESCENT	MCCB	MAIN CIRCUIT BREAKER	RSC	RIGID STEEL CONDUIT	WO	WITHOUT
CR	CURRENT TRANSFORMER	FLUR	FLOURESCENT	MCCB	MAIN CIRCUIT BREAKER	RSC	RIGID STEEL CONDUIT	WO	WITHOUT
CTR	CENTER	FLUR	FLOURESCENT	MCCB	MAIN CIRCUIT BREAKER	RSC	RIGID STEEL CONDUIT	WO	WITHOUT
CU	COPPER	FLUR	FLOURESCENT	MCCB	MAIN CIRCUIT BREAKER	RSC	RIGID STEEL CONDUIT	WO	WITHOUT
		FLUR	FLOURESCENT	MCCB	MAIN CIRCUIT BREAKER	RSC	RIGID STEEL CONDUIT	WO	WITHOUT

[illegible]



three inches = one foot  
one and one half inches = one foot  
one inch = one foot  
three quarters inch = one foot  
one half inch = one foot  
three eighths inch = one foot  
one quarter inch = one foot  
one eighth inch = one foot



- GENERAL NOTES:
- COORDINATE AND SCHEDULE ALL POWER OUTAGES WITH THE COR.
  - ALL SURFACES DISTURBED DUE TO NEW INSTALLATIONS SHALL BE RESTORED TO ORIGINAL OR BETTER CONDITION.
  - THE CONTRACTOR SHALL VISIT THE SITE PRIOR TO BID TO VERIFY ALL EXACT REQUIREMENTS TO INCLUDE IN THE BID PRIOR TO BID.
  - DIRECTIONAL BORE CONDUIT UNDER CONCRETE SIDEWALKS AND ASPHALT DRIVES THROUGH OUT. PATCH ALL TRENCHING TO MATCH EXISTING OR BETTER.

- KEYNOTES:
- OPTOMETRY BUILDING MAIN DISTRIBUTION PANEL MAIN-OP.
  - TECHNOLOGY CABLING CABINET AND TELECOM CABINET. CONTRACTOR MAY SPlice TECHNOLOGY CONDUCTORS IN THE CABINET. PROVIDE TERMINAL BLOCKS, PUNCH DOWNS, 110 BLOCKS OR PATCH PANELS FOR SPLICES. COIL EXTRA CONDUCTOR LENGTH IN THE CABINET.
  - INTERCEPT EXISTING UNDER GROUND SPARE CONDUIT WHICH RUNS BETWEEN 480V SWITCHGEAR MSB-1 AND STEAM TUNNEL. REFER TO DRAWING E501 FOR ADDITIONAL INFORMATION.
  - ADD RECEPTACLE TO LIFT STATION CONTROL PANEL POST.
  - PROVIDE TRACER WIRE IN 1 CONDUIT FROM END POINT TO PANEL BOARD TO ALLOW FUTURE LOCATION OF CONDUIT. PROVIDE A PULL WIRE IN EACH CONDUIT.
  - TERMINATE CONDUIT UNDER PROPOSED IT ROOM LOCATION. PROVIDE TRACER WIRE IN 1 CONDUIT FROM END POINT TO PANEL BOARD TO ALLOW FUTURE LOCATION OF CONDUIT. PROVIDE A PULL WIRE IN EACH CONDUIT.

1 ELECTRICAL - SITE PLAN  
0 15' 30' 60'

100% CONSTRUCTION DOCUMENTS - FOR CONSTRUCTION

NO	REVISION	DATE

VA FORM 08-6231

**Design Tree**  
ENGINEERING AND LAND SURVEYING  
120 17th Avenue W.  
Alexandria, MN 56308  
(320) 762-1290  
3339 W. St. Germain, Suite 250  
St. Cloud, MN 56301  
(320) 217-5557 (Phone)  
(320) 217-5597 (Fax)

**JLG architects**  
Alexandria  
525 Broadway Street  
Alexandria, MN 56308  
phone 320.759.9030  
facsimile 320.759.9062  
www.jlgarchitects.com  
copyright © 2015

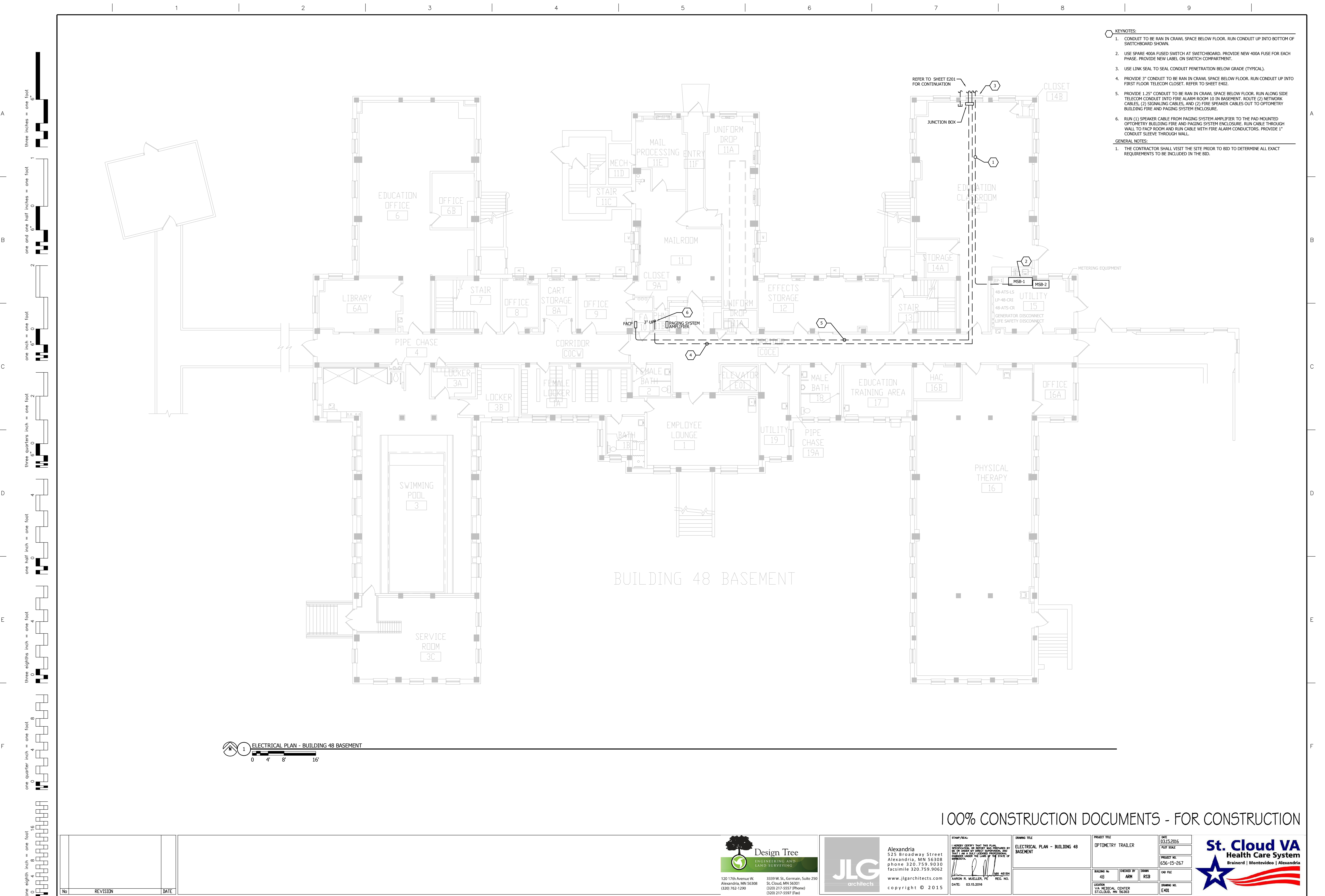
STAMP/SEAL  
I HEREBY CERTIFY THAT THIS PLAN  
WAS PREPARED BY ME OR UNDER MY  
SUPERVISION AND THAT I AM A QUALIFIED PROFESSIONAL  
ENGINEER UNDER THE LAWS OF THE STATE OF  
MINNESOTA  
AMON R. MUELLER, P.E. REG. NO. MN 42184  
DATE: 03.15.2016

DRAWING TITLE  
ELECTRICAL - SITE PLAN

PROJECT TITLE OPTOMETRY TRAILER		DATE 03.15.2016
PROJECT NO. 656-15-267		PLAT SCALE
BUILDING NO. 48	CHECKED BY ARM	OWN RSB
LOCATION VIA MEDICAL CENTER ST. CLOUD, MN 56303	DRAWING NO. E201	

**St. Cloud VA Health Care System**  
Brainerd | Montevideo | Alexandria

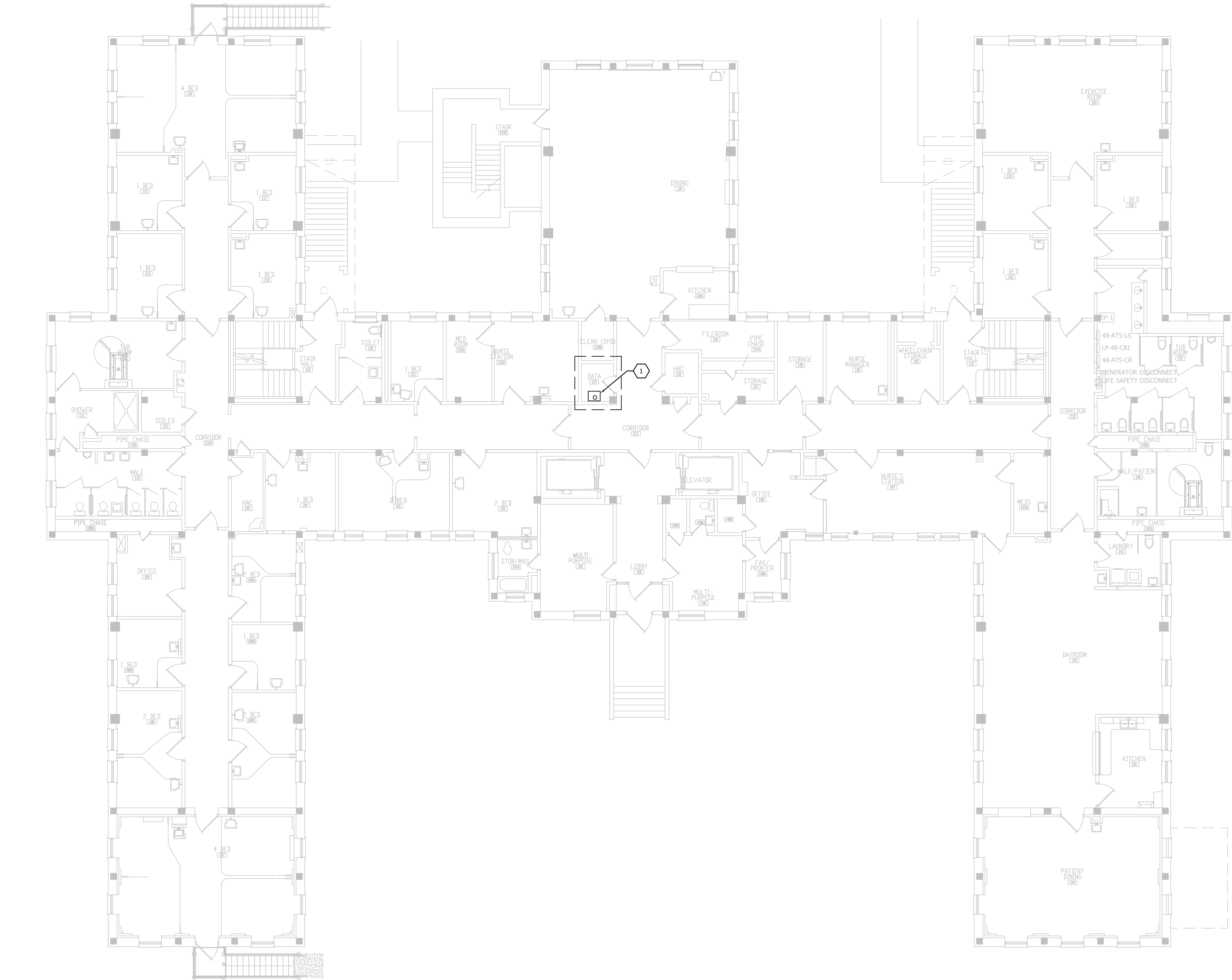




KEYNOTES:  
1. RUN 3" CONDUIT FROM CRAWL SPACE UP TO TELECOM ROOM. ROUTE 50 PAIR COPPER TELEPHONE CABLE, AND A 6 PAIR SINGLE MODE FIBER IN THE CONDUIT TO THE PAD MOUNT OPTOMETRY BUILDING TELEPHONE AND DATA CABINET.

GENERAL NOTES:  
1. THE CONTRACTOR SHALL VISIT THE SITE PRIOR TO BID TO DETERMINE ALL EXACT REQUIREMENTS TO BE INCLUDED IN THE BID.

three inches = one foot  
one and one half inches = one foot  
one inch = one foot  
three quarters inch = one foot  
one half inch = one foot  
three eighths inch = one foot  
one quarter inch = one foot  
one eighth inch = one foot



1 ELECTRICAL PLAN - BUILDING 48 FIRST FLOOR

100% CONSTRUCTION DOCUMENTS - FOR CONSTRUCTION

No		REVISION		DATE	
VA FORM 08-6231					

Design Tree  
ENGINEERING AND LAND SURVEYING  
120 17th Avenue W.  
Alexandria, MN 56308  
(320) 762-1290  
3339 W. St. Germain, Suite 250  
St. Cloud, MN 56301  
(320) 217-5537 (Phone)  
(320) 217-5597 (Fax)

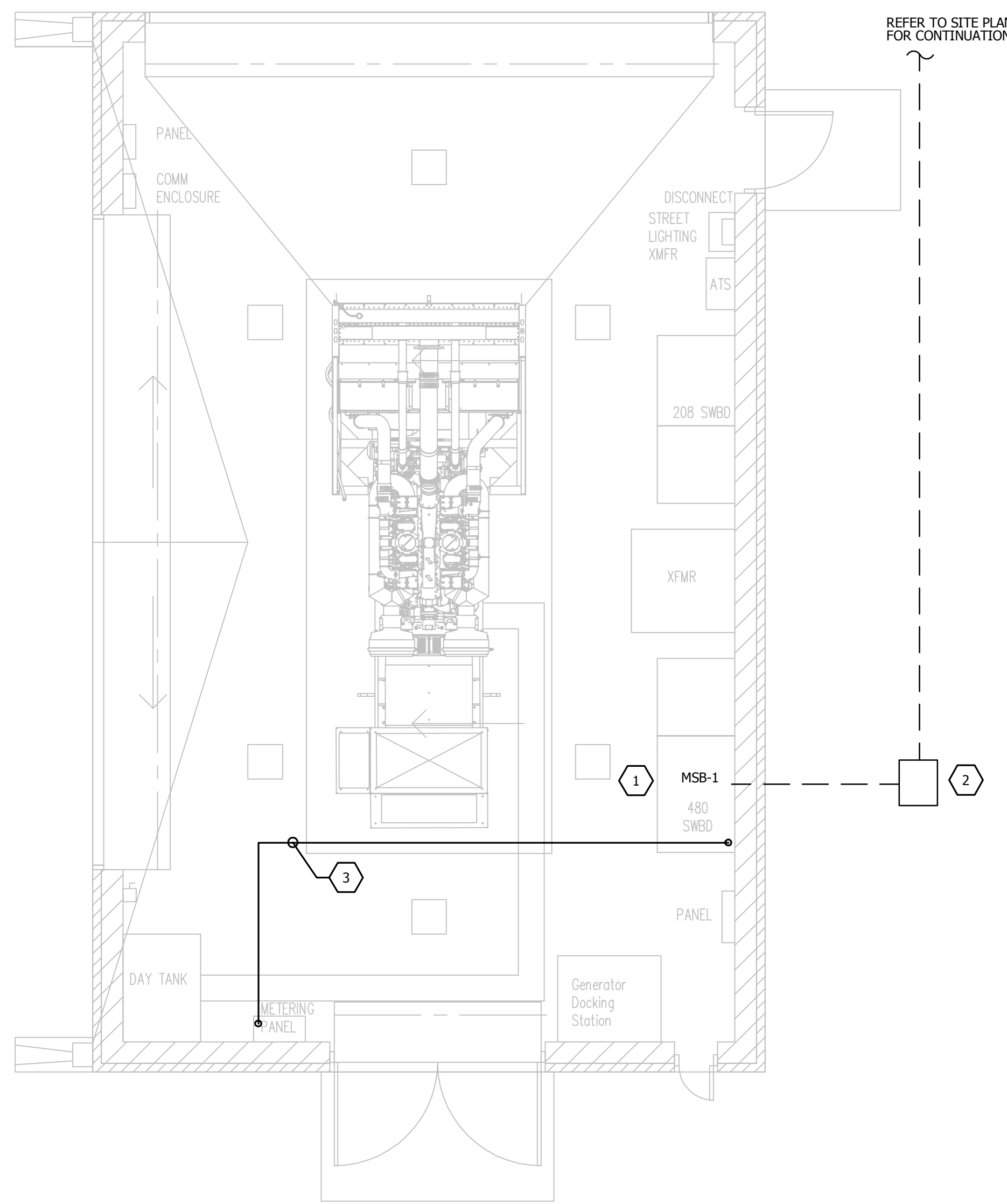
JLG  
architects  
Alexandria  
525 Broadway Street  
Alexandria, MN 56308  
phone 320.759.9030  
facsimile 320.759.9062  
www.jlgarchitects.com  
copyright © 2015

STAMP/SCALE:  
I HEREBY CERTIFY THAT THIS PLAN, SPECIFICATIONS OR REPORT WAS PREPARED BY ME OR UNDER MY DIRECT SUPERVISION AND THAT I AM A QUALIFIED PROFESSIONAL ENGINEER UNDER THE LAWS OF THE STATE OF MINNESOTA.  
AMON R. MUELLER, P.E. REG. NO. 40184  
DATE: 03.15.2016

DRAWING TITLE ELECTRICAL PLAN - BUILDING 48 FIRST FLOOR	
PROJECT TITLE OPTOMETRY TRAILER	
DATE 03.15.2016	
PROJECT NO. 656-15-267	
BUILDING NO. 48	CHECKED BY ARM
LOCATION VIA MEDICAL CENTER ST. CLOUD, MN 56303	DRAWING NO. E402

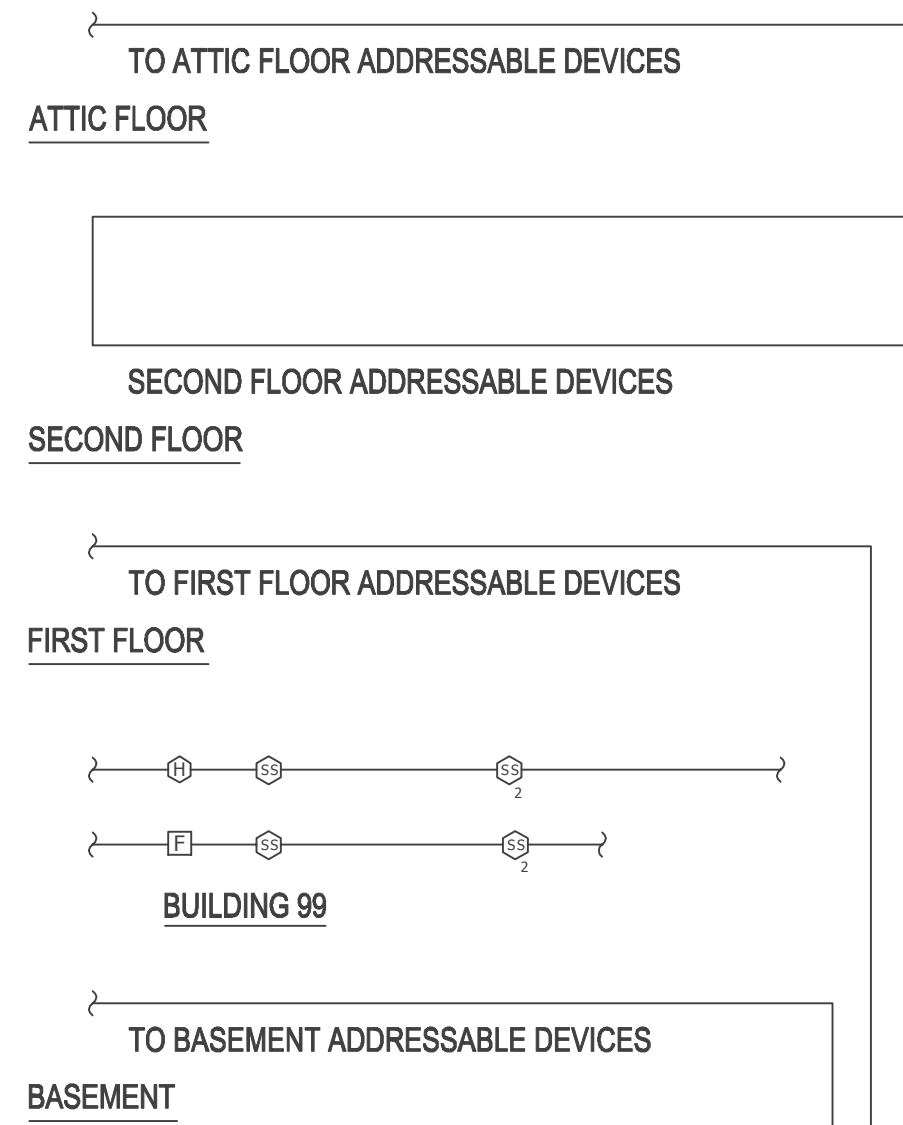
St. Cloud VA  
Health Care System  
Brainerd | Montevideo | Alexandria





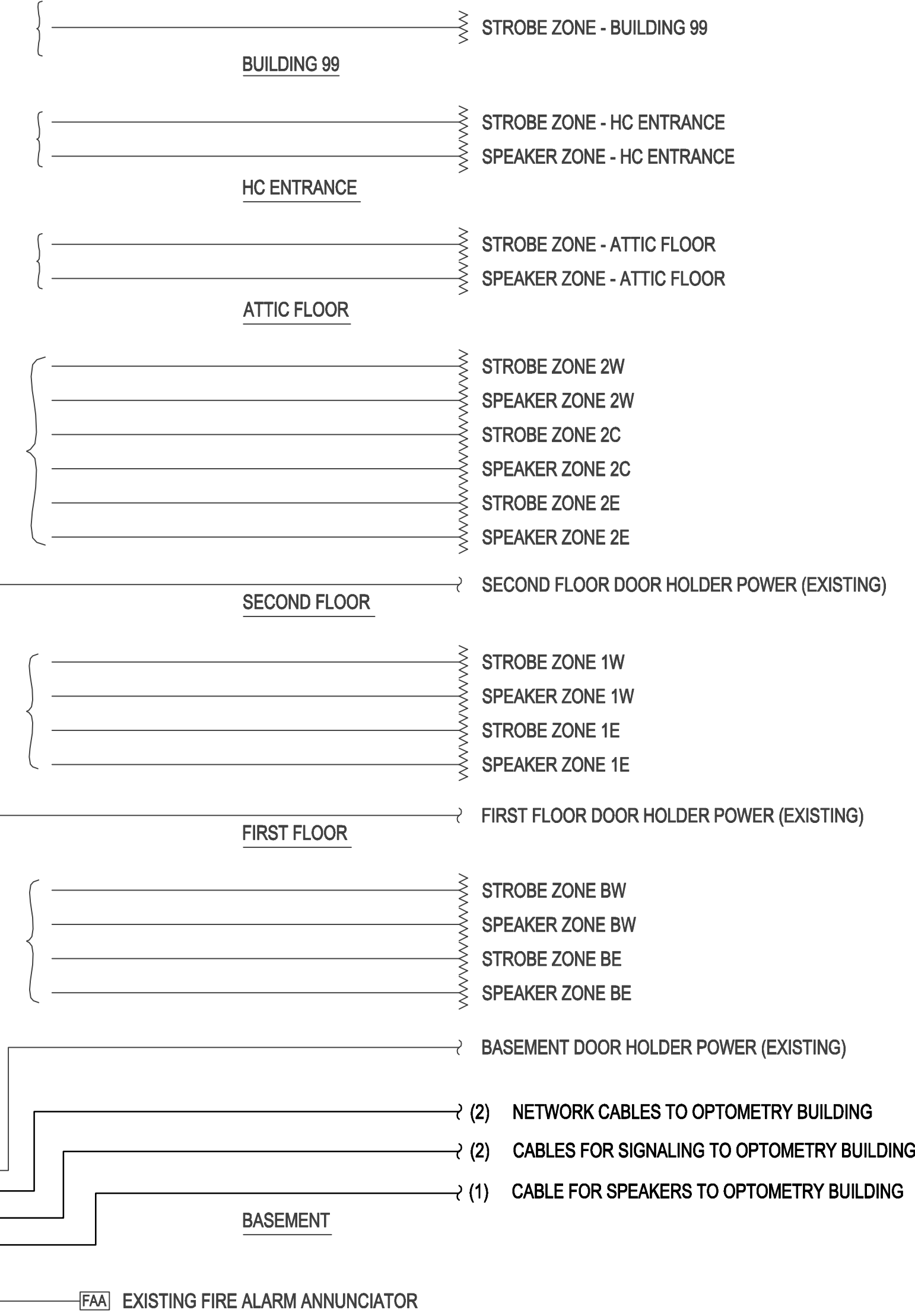
- KEYNOTES:
1. EXISTING SQUARE D 480 VOLT SWITCHBOARD MSB-1. REPLACE THE TRIP PLUG OF AN EXISTING SQUARE D LX36250G 250 AMP SPARE CIRCUIT BREAKER WITH A #ARP90 225 AMP RATING PLUG TO FEED THE NEW 150KVA TRANSFORMER FOR OPTOMETRY BUILDING. PROVIDE NEW LABEL FOR THE BREAKER.
  2. DIG UP AND INTERCEPT EXISTING BELOW GRADE CONDUIT(S). PROVIDE HANDHOLE AND ROUTE 3" CONDUIT TO POWER DISTRIBUTION PANEL MAIN -DP. REFER TO RISER DIAGRAM AND SITE PLAN. PATCH GRADE TO MATCH EXISTING OR BETTER.
  3. PROVIDE 0.75°C WITH CONTROL CONDUCTORS TO GENERATOR METERING PANEL FOR ATS START GENERATOR SIGNAL.

1 GENERATOR BUILDING 113  
0 2' 4' 8'



- GENERAL NOTES:
1. PROVIDE PROGRAMMING FOR FIRE ALARM SYSTEM CONTROL PANEL. CONTROL SCHEME FOR THE OPTOMETRY BUILDING TO BE SIMILAR TO EXISTING ZONE 1W.

2 BUILDING 48 FIRE ALARM RISER  
NTS



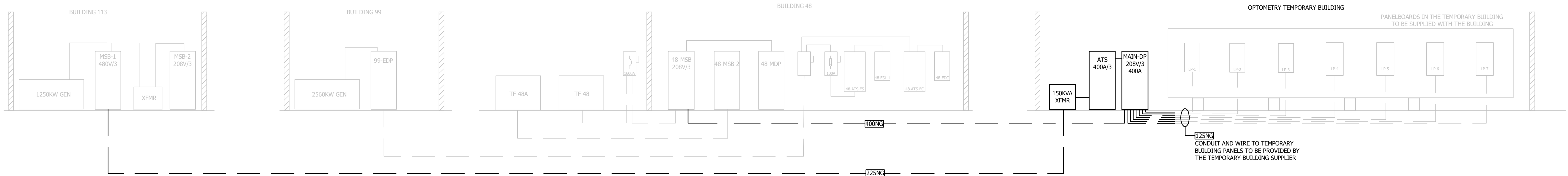
100% CONSTRUCTION DOCUMENTS - FOR CONSTRUCTION

No		REVISION		DATE	
VA FORM 08-6231					

 120 17th Avenue W. Alexandria, MN 56308 (320) 762-1290		 3339 W. St. Germain, Suite 250 St. Cloud, MN 56301 (320) 217-5557 (Phone) (320) 217-5597 (Fax)		 Alexandria 525 Broadway Street Alexandria, MN 56308 phone 320.759.9030 facsimile 320.759.9062 www.jlgarchitects.com copyright © 2015		<small>STAMP/SCALE:</small> I HEREBY CERTIFY THAT THIS PLAN, SPECIFICATION OR REPORT WAS PREPARED BY ME OR UNDER MY DIRECT SUPERVISION AND THAT I AM A QUALIFIED PROFESSIONAL ENGINEER UNDER THE LAWS OF THE STATE OF MINNESOTA.  AARON R. MUELLER, P.E. REG. NO. 401864 DATE: 03.15.2016		<small>DRAWING TITLE:</small> ELECTRICAL PLAN - BUILDING 113 BUILDING 48 FIRE ALARM RISER		<small>PROJECT TITLE:</small> OPTOMETRY TRAILER		<small>DATE:</small> 03.15.2016 <small>PROJECT NO.:</small> 656-15-267 <small>DRAWING NO.:</small> ES01	
<small>BUILDING NO.:</small> 48/113		<small>CHECKED BY:</small> ARM		<small>DRAWN BY:</small> RSB		<small>LOCATION:</small> VIA MEDICAL CENTER ST. CLOUD, MN 56301		 Brainerd   Montevideo   Alexandria					

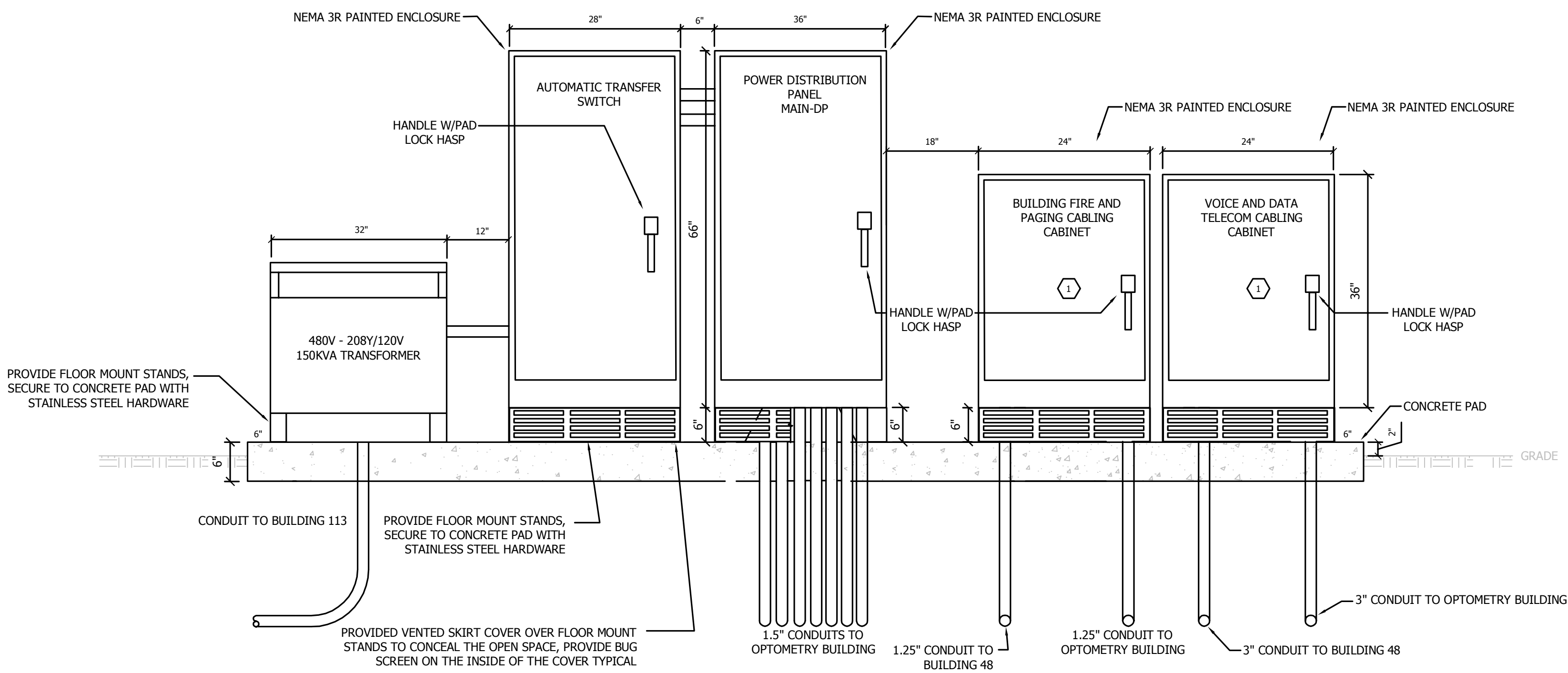


three inches = one foot  
one and one half inches = one foot  
one inch = one foot  
three quarters inch = one foot  
one half inch = one foot  
three eighths inch = one foot  
one quarter inch = one foot  
one eighth inch = one foot

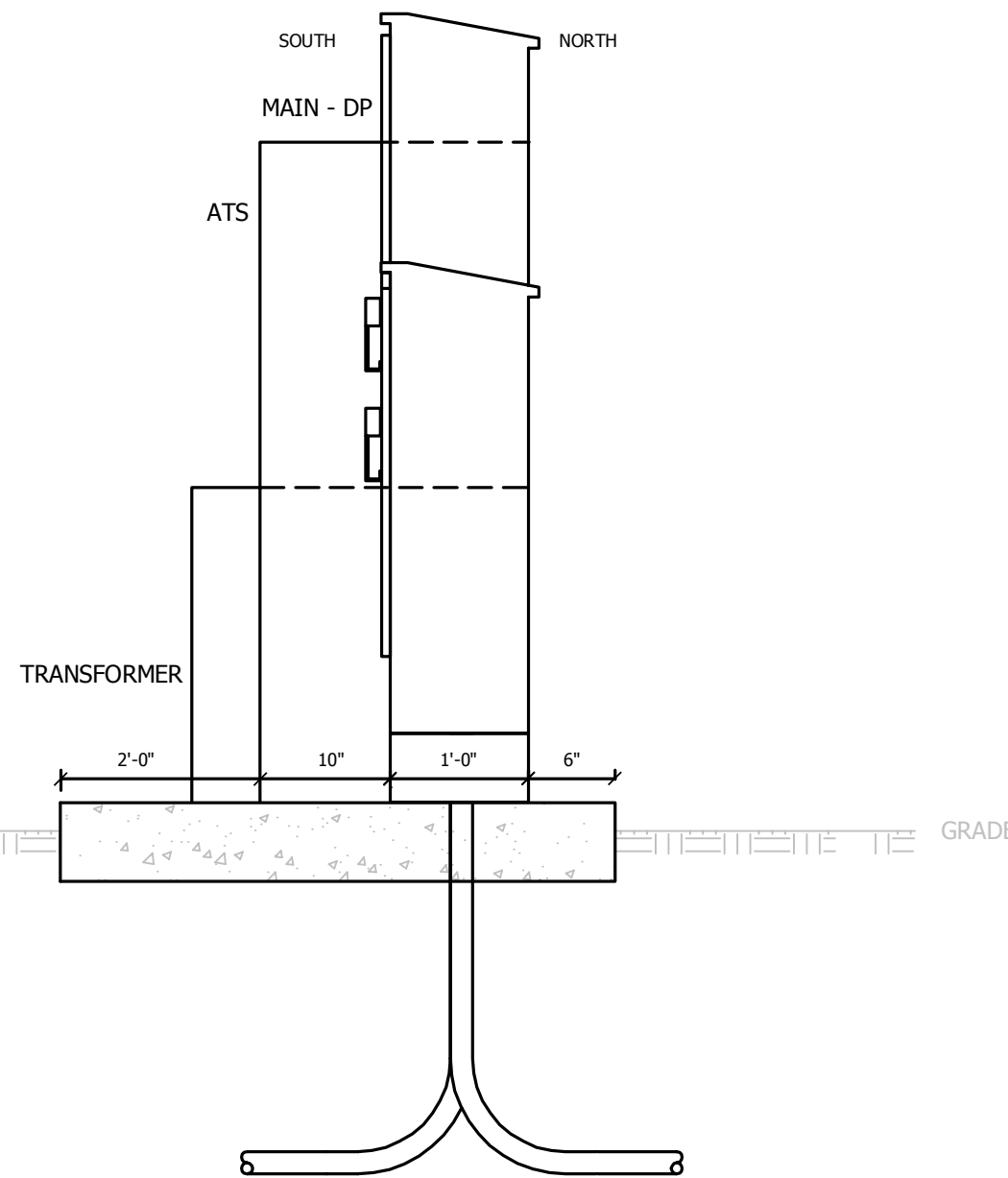


POWER FEEDER SCHEDULE				
TAG	AMP	SETS	CONDUCTORS (AWG OR KCMIL)	CONDUIT SIZE (IN)
125NG	125	1	4#1,1H6G	1.5
225NG	300	1	4#350KCMIL,1H4G	3
400NG	400	2	4#3/0,1H3G	2

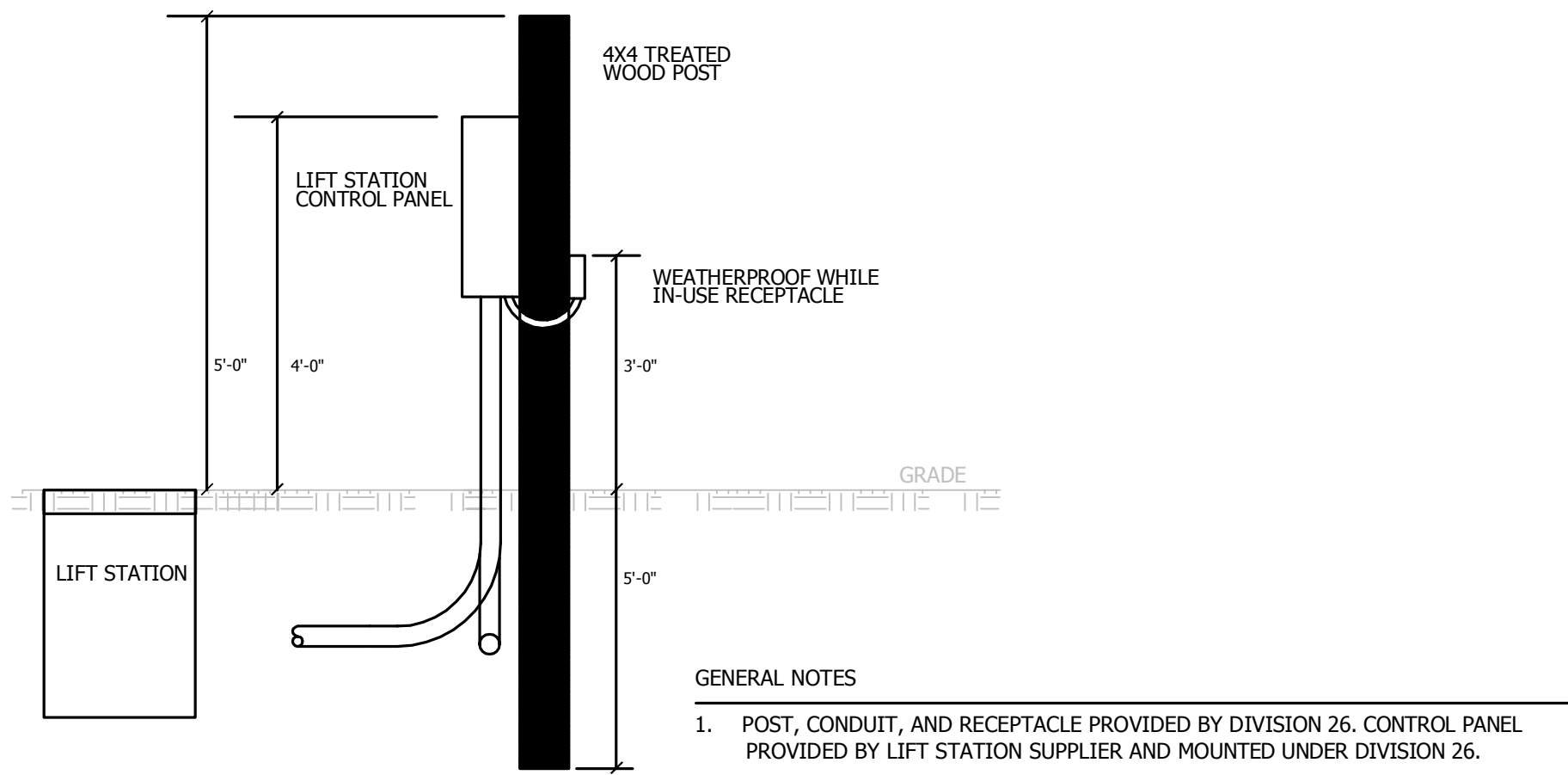
1 RISER DIAGRAM  
E601 NOT TO SCALE



2 SERVICE EQUIPMENT FRONT ELEVATION  
E601 NOT TO SCALE



3 SERVICE EQUIPMENT SIDE ELEVATION  
E601 NOT TO SCALE



4 LIFT STATION SERVICE DETAIL  
E601 NOT TO SCALE

PANELBOARD SCHEDULE		NAME: MAIN-DP		CIRCUIT BREAKER: X		MAIN RATING: 400A		
		LOCATION: EXTERIOR (NEMA 3R)		MAIN LUGS ONLY:		VOLTAGE: 208Y/120		
		MOUNTING: FREE STANDING		WIRES: 4		PHASE: 3		
CKT	CIRCUIT DESCRIPTION	TRIP	POLES	A	B	C	TRIP	CKT
1		---	1				1	2
3	SPACE FOR FUTURE LP-1 FEED	---	1				---	4
5		---	1				1	6
7		---	1				1	8
9	SPACE FOR FUTURE LP-2 FEED	---	1				---	10
11		---	1				1	12
13		---	1				1	14
15	SPACE FOR FUTURE LP-3 FEED	---	1				---	16
17		---	1				1	18
19		---	1				1	20
21	SPACE FOR FUTURE LP-4 FEED	125A	1				30A	22
23		---	1				1	24
25	SPACE	20A	1				1 20A	26
27	SPACE	20A	1				1 20A	28
29	SPACE	20A	1				1 20A	30
TOTAL CONNECTED LOAD:		0		TOTAL CALCULATED DEMAND:		TOTAL CALCULATED AMPS:		
GENERAL NOTES:				KEY NOTES:				
1. OPTOMETRY BUILDING SUPPLIER IS TO PROVIDE FEEDER BREAKERS FOR THE BUILDING PANELBOARDS UNDER THEIR BUILDING INSTALLATION WORK. THIS INCLUDES CABLING AND TERMINATIONS.				* = GFCI RATED BREAKER				
2. ---				** = ISOLATED GROUND CIRCUIT				
3. ---				L = LIGHTING				
				R = RECEPTACLE				

OPTOMETRY BUILDING METASYS MONITORING					
TAG	DESCRIPTION	TYPE	ALARM	GRAPHIC	TREND
EJECTOR-A	Sewage Ejector High Level Alarm	BACnet	X	X	X
ATS-OPT-A	Optometry Building Xfr Switch Gen Lockout	BACnet	X	X	X

- GENERAL NOTES
- ALL METASYS CONDUIT, CABLING AND TERMINATIONS TO BE PROVIDED BY THE ODC CONTRACTOR UNDER DIVISION 23. CABLING AND CONDUIT IS NOT SHOWN ON THE DRAWINGS, REFER TO THE DIVISION 23 SPECIFICATIONS.
  - SEQUENCES OF OPERATION:
    - ALARM MONITOR:** THE SEWAGE EJECTOR HIGH LEVEL ALARM CONTACT WILL BE MONITORED. A CRITICAL ALARM WILL BE GENERATED IF THE CONTACT CLOSURES, INDICATING A "HIGH LEVEL ALARM." ALL CRITICAL ALARMS WILL BE ROUTED SUCH THAT THE BOILER ROOM MONITORING STATION.
    - ALARM MONITOR:** THE AUTOMATIC TRANSFER SWITCH GENERATOR LOCKOUT ALARM CONTACT WILL BE MONITORED. A CRITICAL ALARM WILL BE GENERATED IF THE CONTACT CLOSURES, INDICATING A "OPTOMETRY BUILDING XFR SWITCH LOCKOUT" ALARM. ALL CRITICAL ALARMS WILL BE ROUTED SUCH THAT THE BOILER ROOM MONITORING STATION.

5 METASYS POINT MONITORING  
E601 NOT TO SCALE

No	REVISION	DATE

VA FORM 08-6231

