

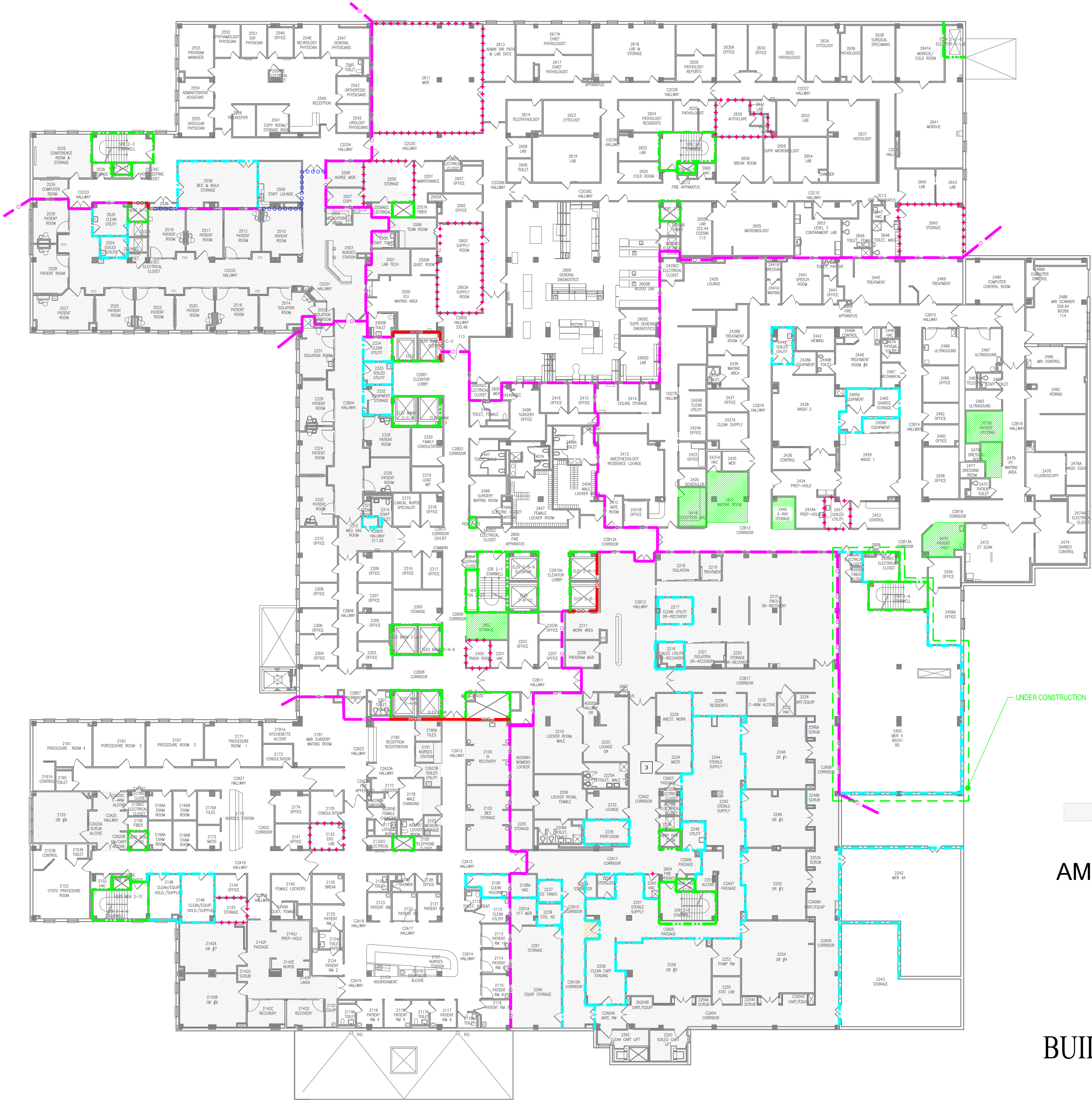
SUITE DESCRIPTIONS

GENERAL DRAWING NOTES:

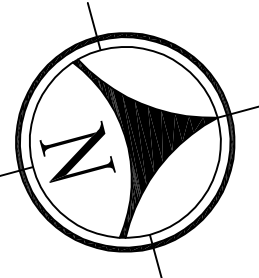
- EQUIVALENCIES HAVE BEEN GRANTED FOR THE FOLLOWING:
- 1. SELF CLOSING DOOR HARDWARE IN DOMICILIARY OCCUPANCIES-DATED 1/09/98
  - 2. INSTALLATION OF WIRELESS ACCESS POINT EQUIPMENT WITHIN EXIT STAIR ENCLOSURES-DATED 2/11/10

SYMBOLS LIST

- 2 HOUR FIRE BARRIER
- 1 HOUR FIRE BARRIER
- 2 HOUR FIRE/SMOKE BARRIER
- 1 HOUR FIRE/SMOKE BARRIER
- 30 MINUTE SMOKE BARRIER
- SMOKE RESISTIVE HAZARDOUS AREA



HAP OCCUPANCY  
32,260s.f.  
AMBULATORY OCCUPANCY  
74,348s.f.



BUILDING 111 SECOND FLOOR  
FULLY SPRINKLERED  
HEALTH CARE OCCUPANCY

Revisions	Date	 <div>CLEMENT J. ZABLOCKI VAMC 5000 W. National Ave. Milwaukee, WI 53295</div>	 <div>FP&amp;C CONSULTANTS, INC. 1520 MAIN STREET INDIANAPOLIS, IN 46224 (317)486-5188</div>	Drawing Title	Client Project No.	Contract No.	Project Title	Designed By	Checked By	Drawn By	Date	Drawing No.
FP&C Proj. #:	1751.54			BUILDING 111 SECOND FLOOR	111	AutoCAD File Name SOC03 111-2	STATEMENT OF CONDITIONS	BAA	BAA	DN	12/2016	SOC-3 Sht. 3 of 14