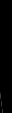


RECORD DRAWINGS	12-08-05
CONSTRUCTION DOCUMENTS	5-21-04
100% REVIEW SUBMITTAL	4-30-04
35% SUBMITTAL	3-22-03

**HEAPY
ENGINEERING**
Mechanical/Electrical Consultants

1400 WEST DOROTHY LANE
Dayton, Ohio 45409

Tele. No. (937) 224-0861
Fax No. (937) 224-5777



THP Limited
100 East Eighth St.
Cincinnati, Ohio 45202
Phone: 513/241-3800
Fax: 513/241-2961

LEVIN • PORTER • ASSOCIATES • INC.

ARCHITECTURE PLANNING INTERIOR DESIGN

24 NORTH JEFFERSON STREET DAYTON, OHIO 45402 2003
937 224 1931 FAX: 937 224 3091 E MAIL LPA@LEVIN-PORTER.COM

This Document
originally issued
Rodney A. Rusno
May 21, 2004.
document is
considered a s
document.

Drawing Title	Project Title		
PARTIAL THIRD FLOOR PLAN NEW WORK – DUCTWORK	S.I.C.U. EXPAND / REMODEL		
Approved: Division Chief	Building Number	Checked	Drawn
	001	D.S.T.	M.D.F.
Approved: Service Director	Location		
	CINCINNATI, OHIO		

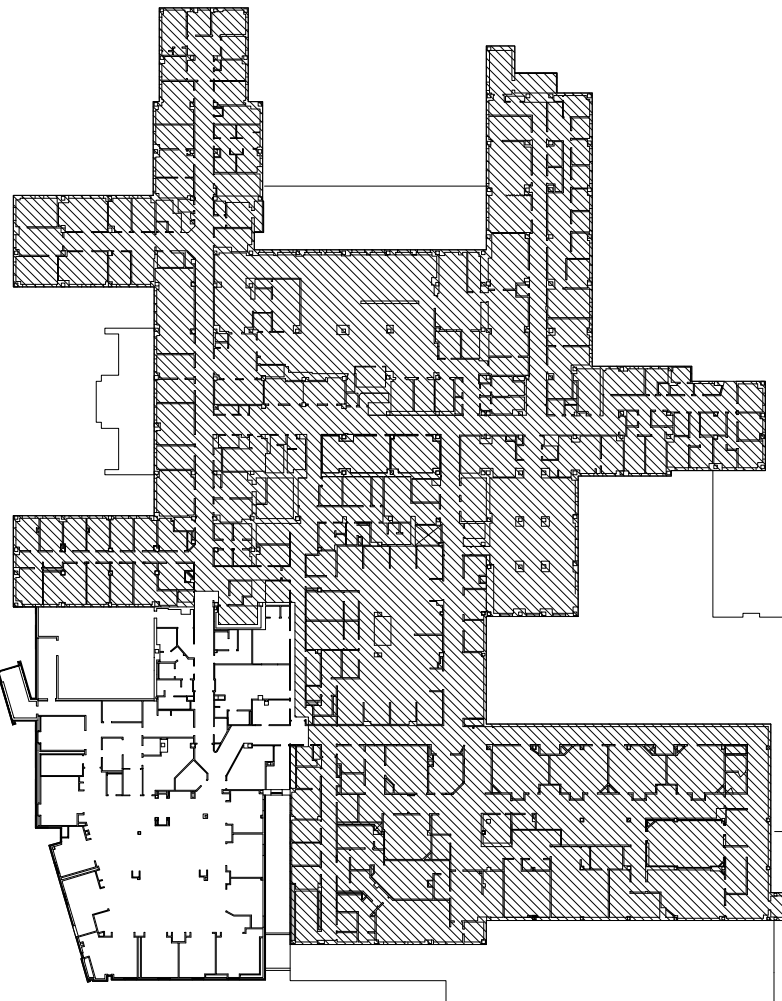
Date	MAY 21, 2004
VA Project No. 539-313 UFA Project No. 23167.00	
DRAWING NO.	1-H4
Dwg. Of	

The seal of the Office of Facilities is a circular emblem. It features a central white circle with a vertical black line through its center. This central circle is surrounded by a black ring. The outermost ring of the seal is white and contains the text "Office of Facilities" in a black, serif font, arranged in a circular path.

Department of
Veterans Affairs



- | | NOTES |
|----|--|
| 1 | EXHAUST FAN ON ROOF, SEE FAN SCHEDULE. |
| 2 | 16/8 EXHAUST DUCT UP FROM SECOND FLOOR. |
| 3 | 26/8 EXHAUST DUCT UP FROM SECOND FLOOR. |
| 4 | 14/8 EXHAUST DUCT UP FROM SECOND FLOOR. |
| 5 | 9/9 EXHAUST DUCT UP FROM SECOND FLOOR. |
| 6 | 36/14 EXHAUST DUCT UP FROM SECOND FLOOR. |
| 7 | CONNECT TO 2.5" HOT WATER (SUPPLY & RETURN) STUBS AND EXTEND TO YAW HEAT COILS. |
| 8 | EXISTING PENTHOUSE ON ROOF TO REMAIN. |
| 9 | EXISTING AIR HANDLING UNIT TO REMAIN. |
| 10 | ISOLATION ROOM AIR FLOW DIRECTION/PRESSURIZATION INDICATOR. MOUNT ON WALL, ABOVE DOOR. |
| 11 | NEGATIVE PRESSURE ROOM. ALL DUCTWORK AND/OR PIPING PENETRATIONS THRU NEGATIVE PRESSURE ROOM WALLS AND CEILING TO BE SEALED TIGHT. |
| 12 | THIS DUCTWORK TO BE EXPOSED TO OUTDOORS. |
| 13 | DUCT TO PENETRATE EXISTING CONCRETE BELOW EXISTING BEAM. COORDINATE EXACT LOCATION WITH ARCHITECTURALS. INSTALL DUCT AS HIGH AS POSSIBLE. |
| 14 | DUCT TO DROP IN CHASE AND CONNECT TO RETURN GRILLE IN WALL. INSTALL RETURN GRILLE 12" AFF. |
| 15 | POSITIVE PRESSURE ROOM. |
| 16 | CONNECT TO SIDE OF EXISTING AIR HANDLING UNIT SECTION. PROVIDE BELLOWS FITTING, SEAL AS REQUIRED. CONNECT AS HIGH AS POSSIBLE. |
| 17 | EXISTING OPENING TO BE MODIFIED FOR NEW EXHAUST FAN INSTALLATION. |
| 18 | 10/6 EXHAUST DUCT UP FROM SECOND FLOOR. |
| 19 | BALANCE EXISTING AIR HANDLING UNIT TO NEW REQUIRED CFM. |
| 20 | FIRE DAMPER. |
| 21 | INSTALL DUCTWORK AS HIGH AS POSSIBLE. COORDINATE EXACT LOCATION WITH PLUMBING EQUIPMENT. |
| 22 | TEMPERATURE AND HUMIDITY SENSOR FOR CLEAN LINEN SUPPLY ROOM. SENSOR TO SET POINT BOILER PLANT UPON DEVIATION FROM SET POINT (COORDINATE EXACT REQUIREMENT WITH VA). PROVIDE READ-OUT FOR SENSOR AT BOILER PLANT (MAIN CONTROL OPERATOR WORKSTATION). |
| 23 | DUCT MOUNTED AIR DEVICE. |
| 24 | EXPANSION JOINT. SEE ARCHITECTURALS FOR EXPANSION JOINT DETAIL. PROVIDE EXPANSION COMPENSATION FOR ALL DUCTWORK AND/OR PIPING PASSING THRU EXPANSION JOINT. |



KEY PLAN

SCALE

