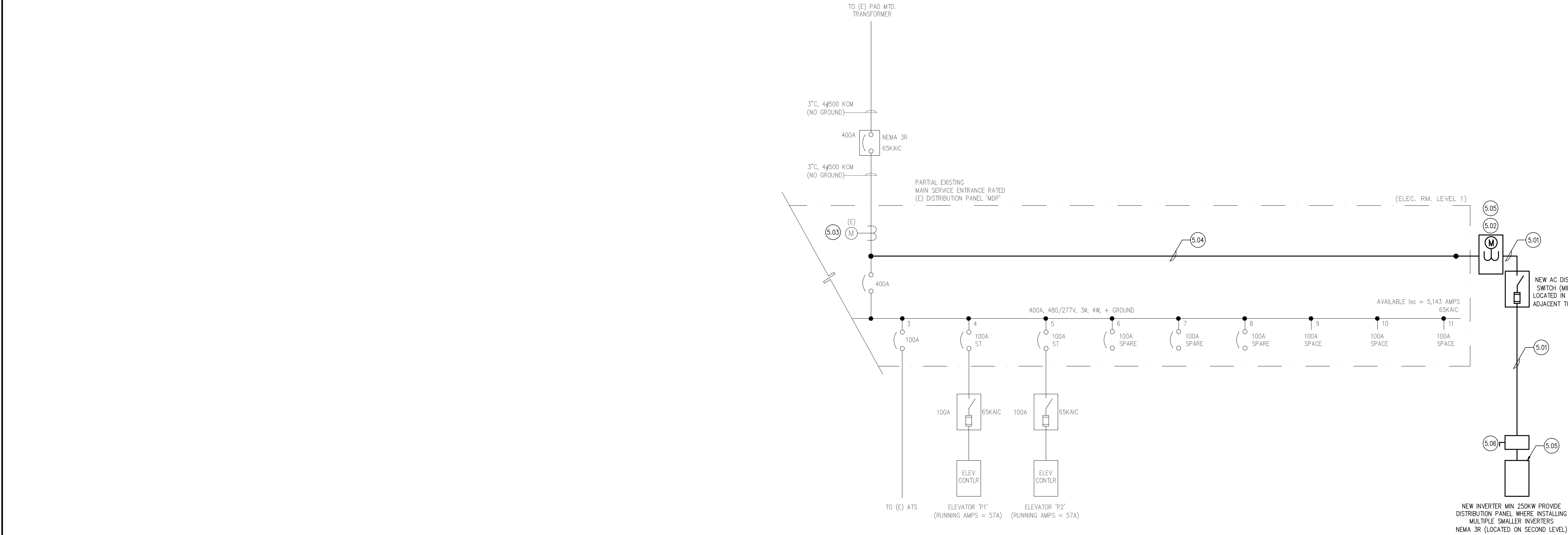


three inches = one foot
one and one half inches = one foot
one inch = one foot
three quarters inch = one foot
one half inch = one foot
three eighths inch = one foot
one quarter inch = one foot
one eighth inch = one foot

Last saved by: Monday, February 25, 2013 5:15:14 PM
Plotting Date: 3/1/2013 1:31 PM
Drawing File: S:\0106251\PA-PV-ES51.dwg
Login: JERRY LEE



2 SINGLE LINE DIAGRAM – NORMAL AND EMERGENCY POWER
SCALE: NONE



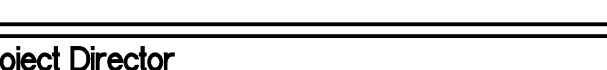

SHEET NOTES

- ALL ELECTRICAL DISTRIBUTION EQUIPMENT SHALL BE RATED NEMA-1 U.O.N.

KEYNOTES

- MIN. 2-3" CONDUITS WITH MINIMUM 4# 3/0, 1#2 (G) IN EACH FROM INVERTER ON SECOND FLOOR INTO SWITCHBOARD FOR PV SYSTEM. EXACT CONDUIT AND WIRE SIZE AS REQUIRED FOR ACTUAL PV SYSTEM DESIGN.
- PROVIDE NEW METER AND WIRING PER VA STANDARDS, COORDINATE SHUTDOWN FOR WIRING TERMINATIONS WITH VA MINIMUM TWO WEEKS IN ADVANCE. COORDINATE INTERFACE AND PROGRAMMING WITH VA SITE ENERGY ENGINEER. METER SHALL BE CONNECTED TO SITE LAN AT EXISTING CONNECTION IN FIRST FLOOR MAIN ELECTRICAL ROOM TO COMMUNICATE WITH CAMPUS AND REMOTE MONITORING SYSTEMS. EXACT LOCATION OF METER TO BE COORDINATED IN FIELD WITH VA RE.
- (E) PM850 BI-DIRECTIONAL METER.
- PROVIDE NEW 400A, 277/480 VOLT, SILVER-PLATED COPPER BUSSING TO MATCH EXISTING GE SPECTRA SERIES DISTRIBUTION PANEL. PROVIDE ALL BUSS CONNECTIONS, METER SOCKET AND WIRING. PROVIDE CERTIFICATION OF MODIFIED DISTRIBUTION PANEL TO MAINTAIN ORIGINAL MANUFACTURER'S WARRANTY.
- PROVIDE NETWORK CONNECTION TO SITE LAN AT EXISTING CONNECTION IN FIRST FLOOR MAIN ELECTRICAL ROOM.
- PROVIDE EXTERNAL DISCONNECT SWITCH IN ACCORDANCE WITH NFPA 70 (NEC) 690.61.

CONSTRUCTION DOCUMENTS

		CONSULTANTS:		Seals and Signatures		ARCHITECT/ENGINEERS:		Drawing Title SINGLE LINE DIAGRAM NORMAL AND EMERGENCY POWER		Project Title CENTERS FOR AMBULATORY CARE, POLYTRAUMA AND BLIND REHABILITATION Parking Structure 1 Photovoltaic System Addition		Project Number 640-424		Office of Construction and Facilities Management			
		 GUTTMANN & BLAEVOET CONSULTING ENGINEERS 2351 Powell Street San Francisco, CA, 94133-1449 P 415 655 4000 F 415 655 4001 Egkb@gb-eng.com				SMITHGROUP architecture engineering interiors planning 301 BATTERY STREET, 7TH FLOOR SAN FRANCISCO, CA 94111 T 415.227.0100 F 415.882.7716 www.smithgroup.com Associate Architect: The Design Partnership LLP Architects + Planners 1412 VAN NESS AVE., 2ND FLOOR SAN FRANCISCO, CA 94109 T 415.777.3737 F 415.777.3476 www.dpsf.com		Approved Project Director 		Location 3801 Miranda Ave., Palo Alto CA		Building Number 501					
Revisions:		Date								Date 30 JAN 2016		Checked HP		Drawn LM		Drawing Number ES5.1.1	
																 Department of Veterans Affairs	