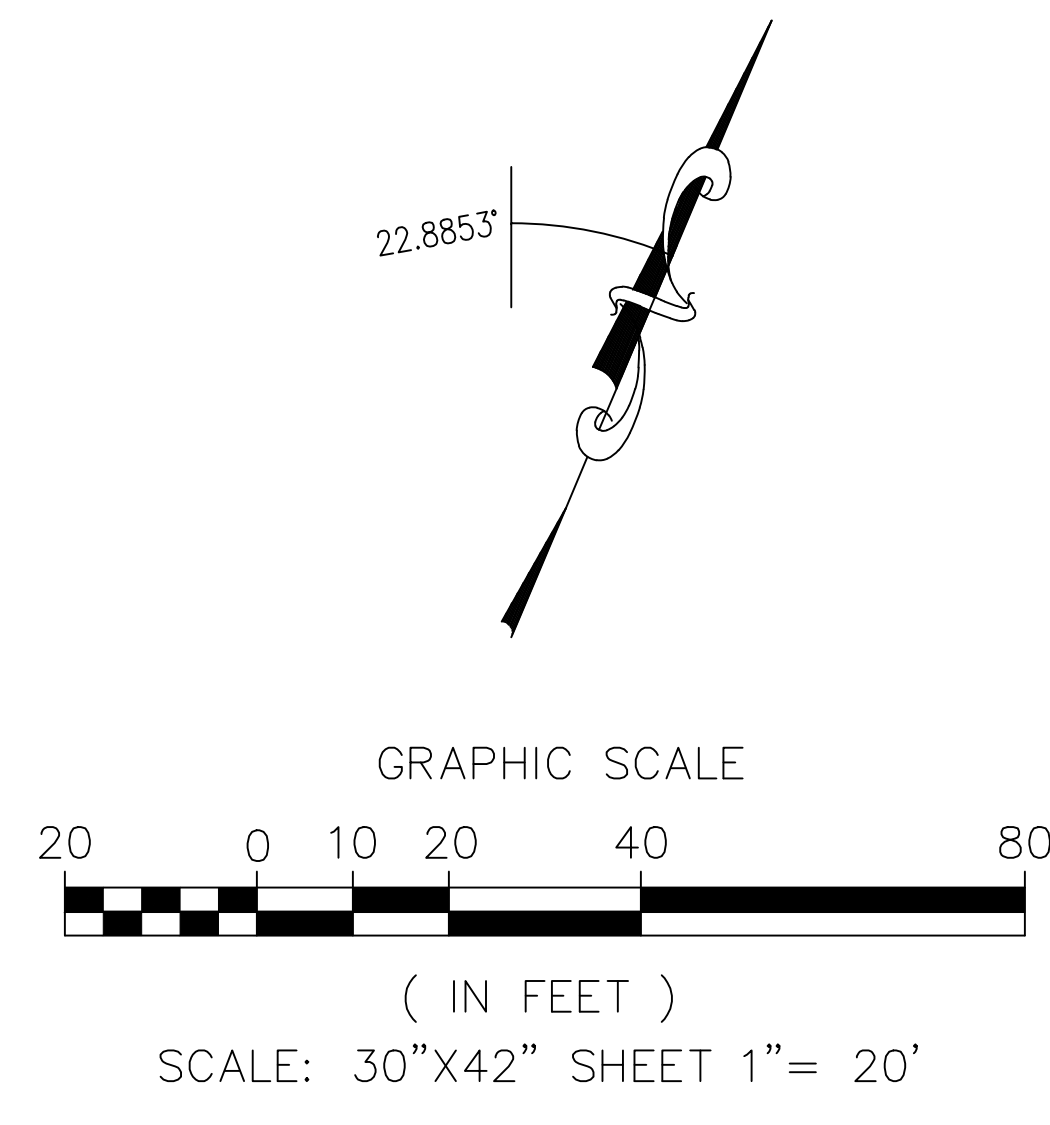
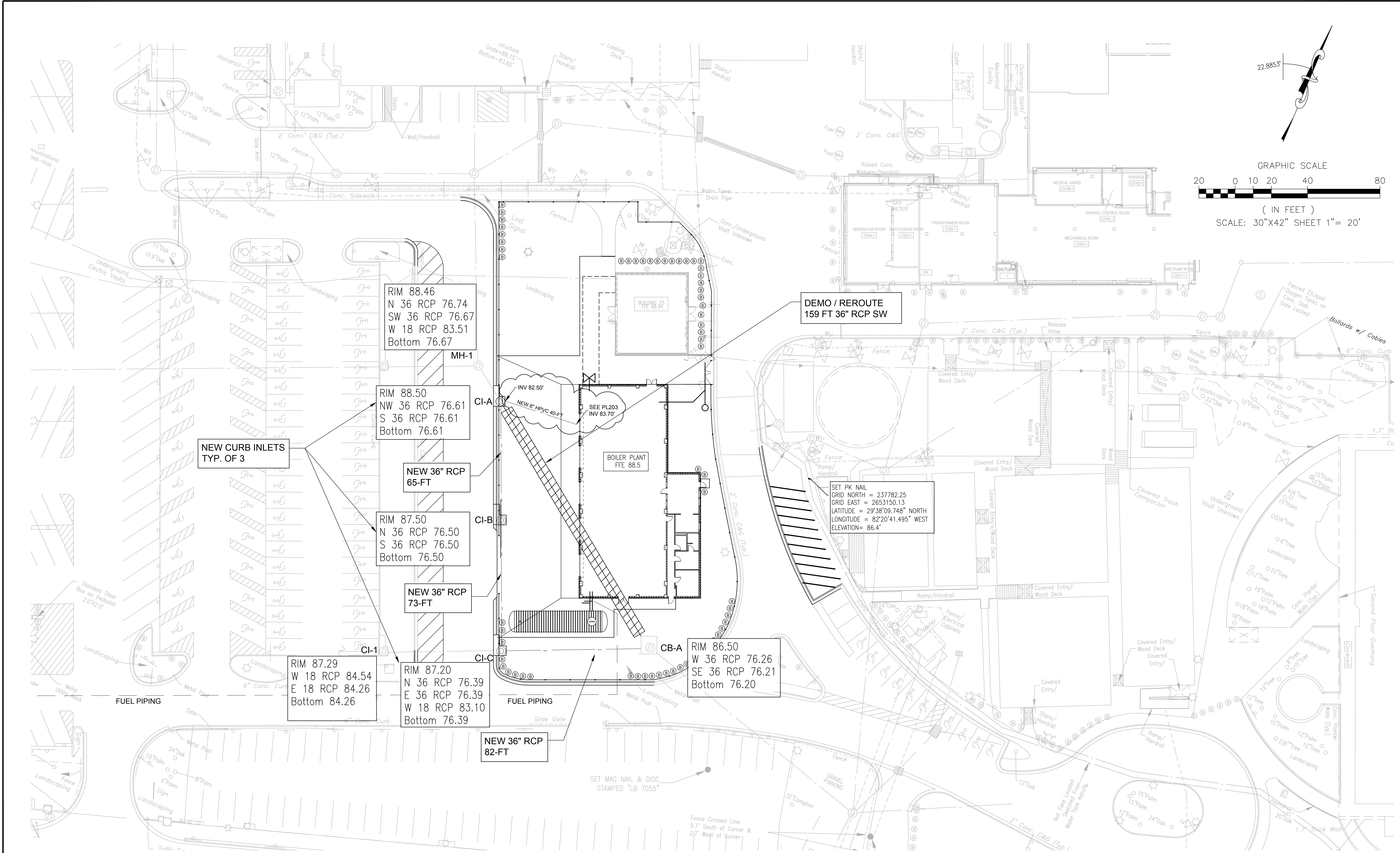



three inches = one foot
one and one half inches = one foot
one inch = one foot
three quarters inch = one foot
one half inch = one foot
three eighths inch = one foot
one quarter inch = one foot
one eighth inch = one foot



THIS DRAWING IS AN ADDENDUM TO THE ORIGINAL C500 DRAWING.
THE ADDENDUM ADDS THE LOCATIONS OF THE STORMWATER CONNECTION.

FINAL DESIGN
APPROVED FOR CONSTRUCTION

		CONSULTANTS:		ENGINEER-OF-RECORD MICHAEL D. TOOTLE FL P.E. NO. 67818	ARCHITECT/ENGINEERS: <div><div>AKEA INC.</div><div>3603 NW 98th Street, Suite B Gainesville, FL 32606 Phone: (352) 474-6124 Fax: (352) 553-4437 COA: FL #26693 AKEA Project No. 083-14</div></div>	Drawing Title	Project Number	Office of Construction and Facilities Management	
						STORMWATER UTILITY	573-14-600		
							Building Number		
						Approved: Project Director	Location	Drawing Number	
							GAINESVILLE, FLORIDA	C500	
ADDENDUM #2:						Date	Checked	Drawn	 Department of Veterans Affairs
ADD MISSING DOWNDRAIN TO STORMWATER CONNECTION	08/30/17					JULY 8, 2016	MDT	JG	
Revisions:	Date								