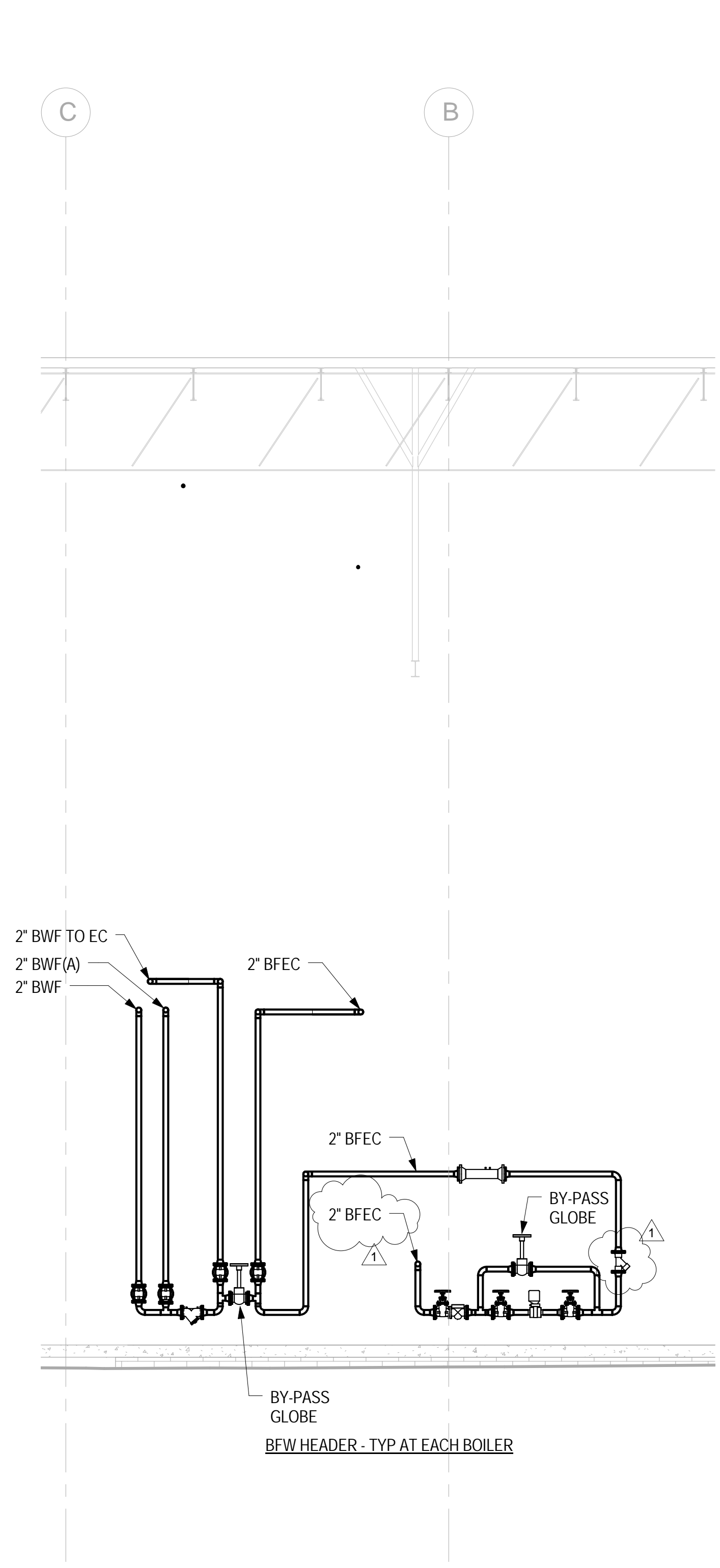
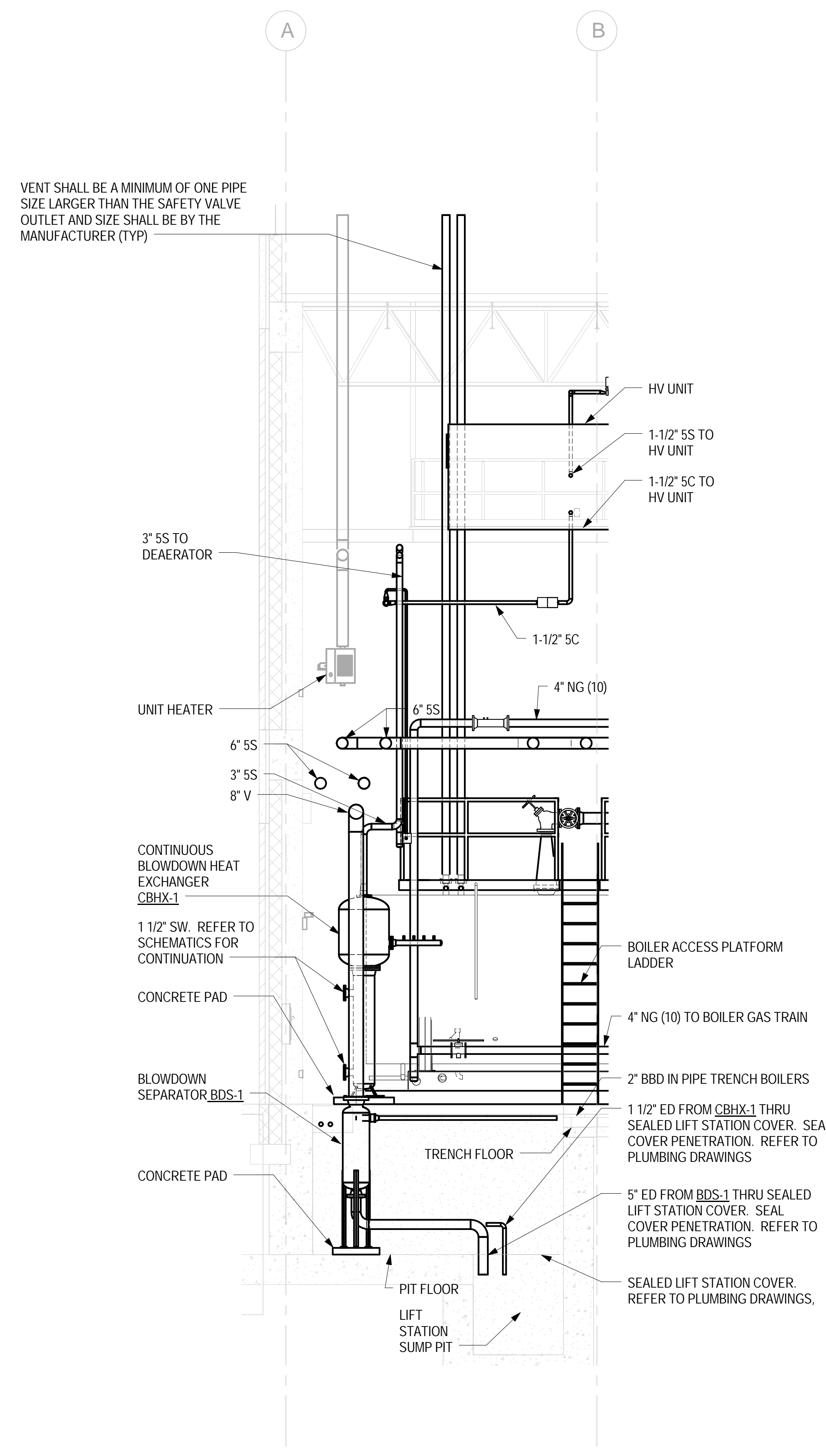


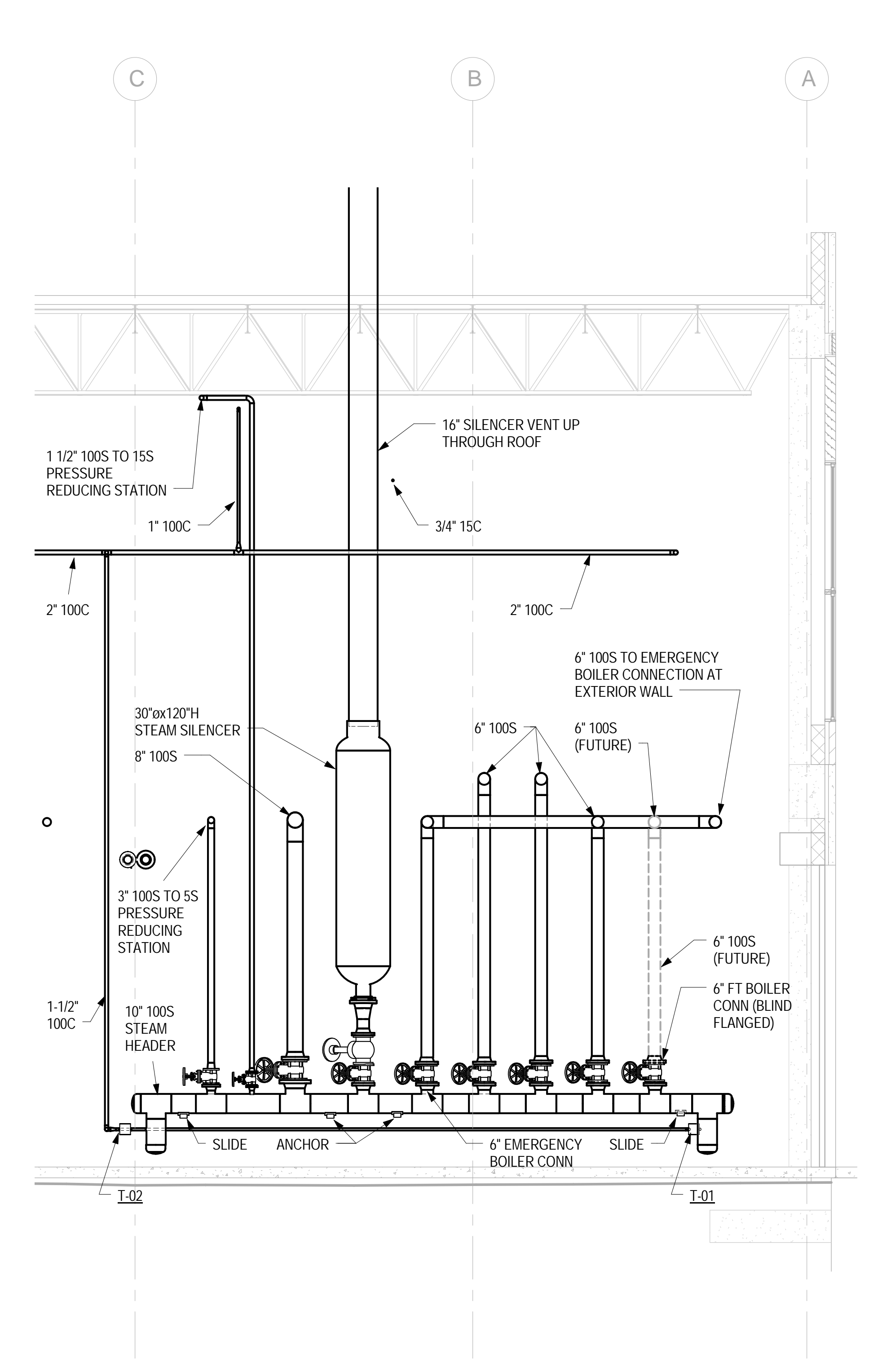
three inches = one foot  
one and one half inches = one foot  
one inch = one foot  
three quarters inch = one foot  
one half inch = one foot  
three eighths inch = one foot  
one quarter inch = one foot  
one eighth inch = one foot



BOILER PLANT - SECTIONS - MECHANICAL  
1/4" = 1'-0"



BOILER PLANT - SECTIONS - MECHANICAL  
1/4" = 1'-0"



BOILER PLANT - SECTIONS - MECHANICAL  
1/4" = 1'-0"

<div>1 - Addendum #2 08/30/17 Revisions: Date</div>		<div>CONSULTANTS:<div><div><div><div><div></div><div>AEI</div></div><div>Affiliated Engineers</div></div><div>Affiliated Engineers SE, Inc. Trioga Town Center 12921 SW 1st Road Ste 205 Gainesville, Florida 32669 Tel 352.376.5500 Fax 352.375.3479 CA-6140</div></div></div></div>	<div>ENGINEER-OF-RECORD JACK STEWART NEALE FL P.E. NO. 42678</div>	<div>ARCHITECT/ENGINEERS:<div><div><div><div></div><div>AKEA</div><div>INC.</div></div><div>3603 NW 98th Street, Suite B Gainesville, FL 32606 Phone: (352) 474-6124 Fax: (352) 553-4437 COA: FL #26693 AKEA Project No. 083-14</div></div></div></div>	<div>Drawing Title BOILER PLANT - SECTIONS - MECHANICAL</div> <div>Approved: Project Director</div>	<div>Project Title REPLACE BOILERS - FCA D, ENERGY AT THE MALCOM RANDALL VAMC</div> <div>Location GAINESVILLE, FLORIDA</div> <div>Date JULY 8, 2016</div> <div>Checked JSN</div> <div>Drawn RWD</div>	<div>Project Number 573-14-600</div> <div>Building Number</div> <div>Drawing Number MP303</div>	<div>Office of Construction and Facilities Management</div>
---	--	---	--	---	---	---	---	---

FINAL DESIGN  
APPROVED FOR CONSTRUCTION