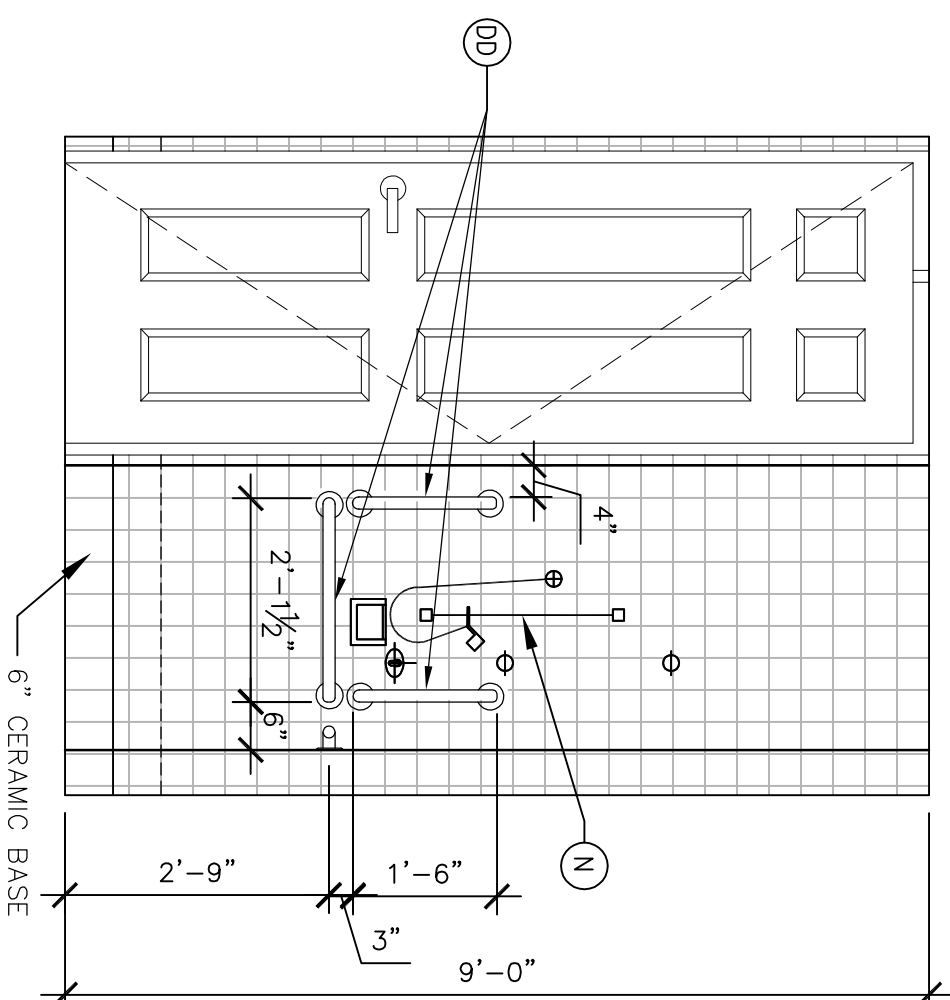
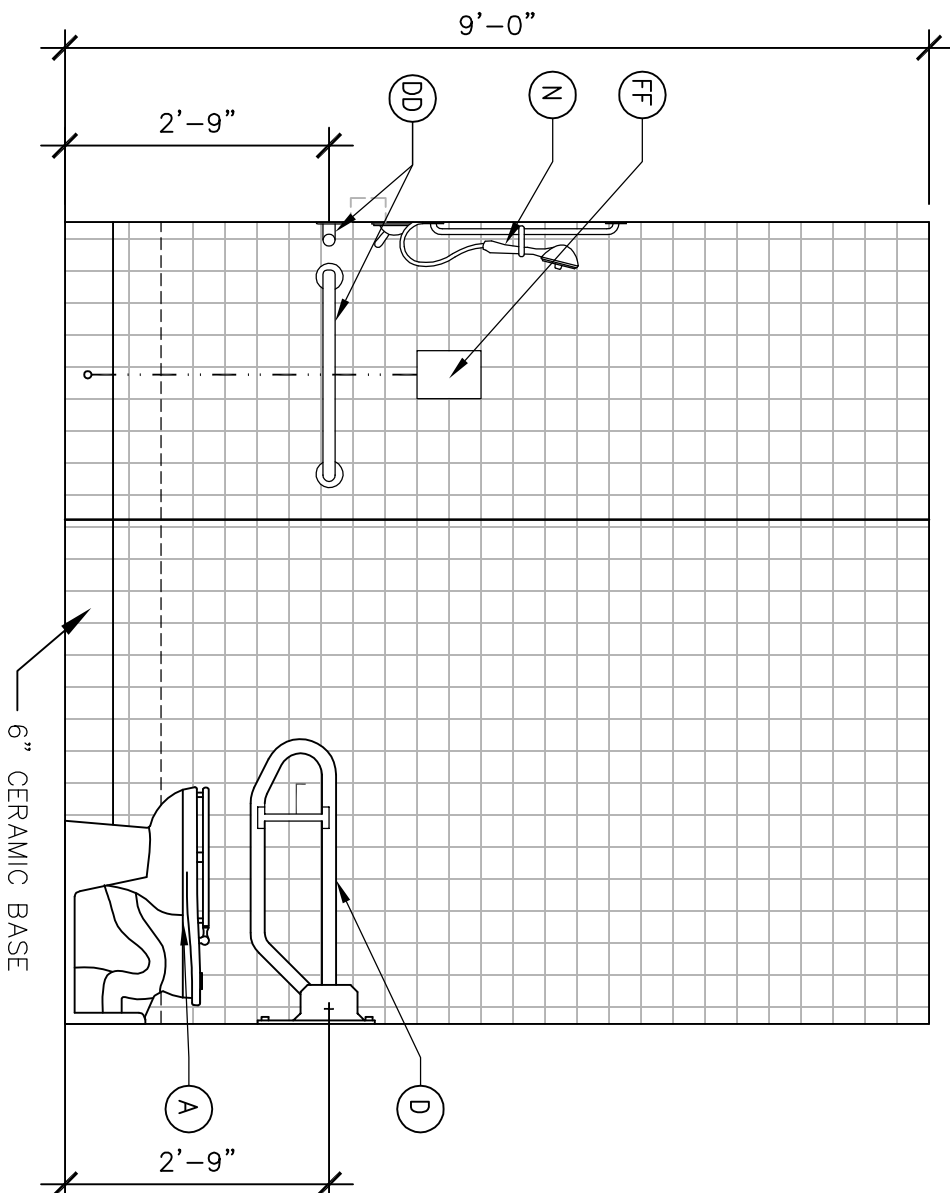


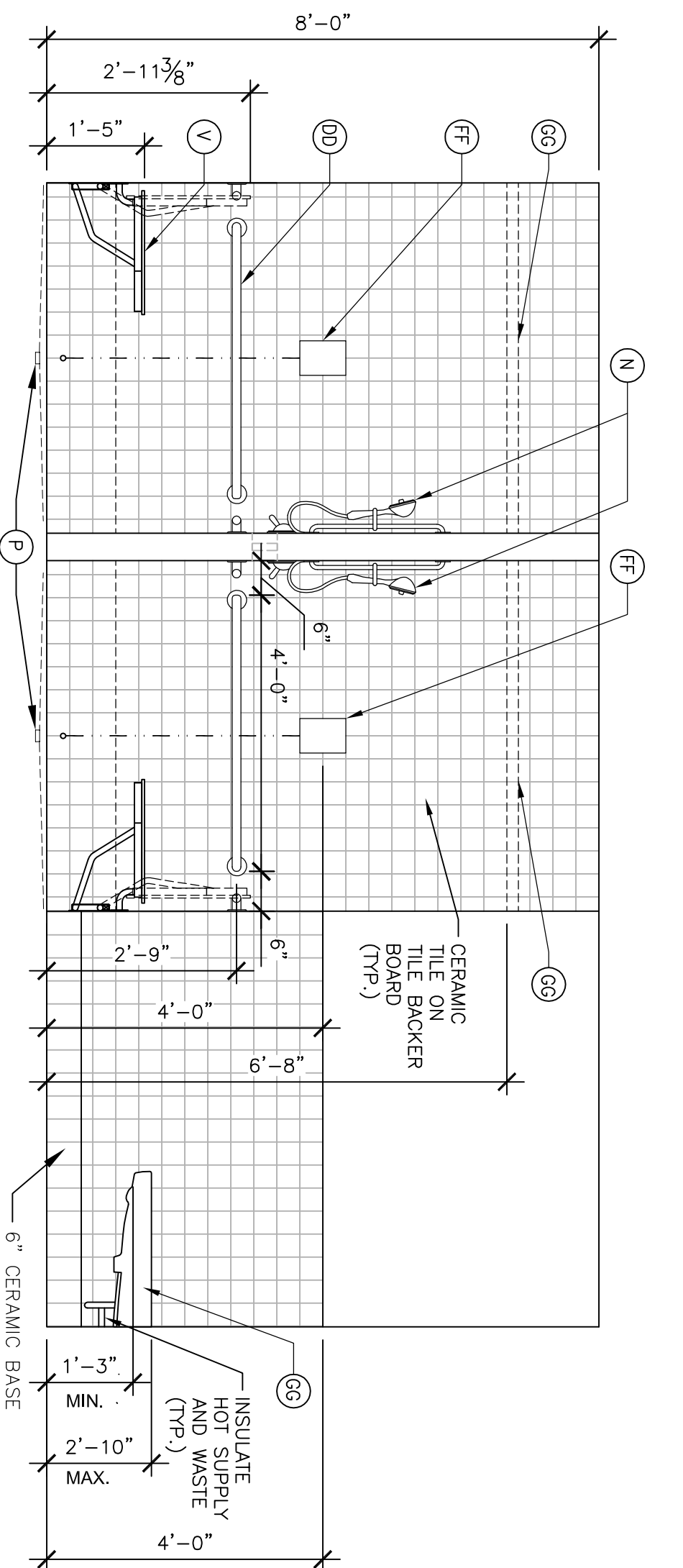
1 BARIATRIC TOILET ROOM 144
1/2" = 1'-0"



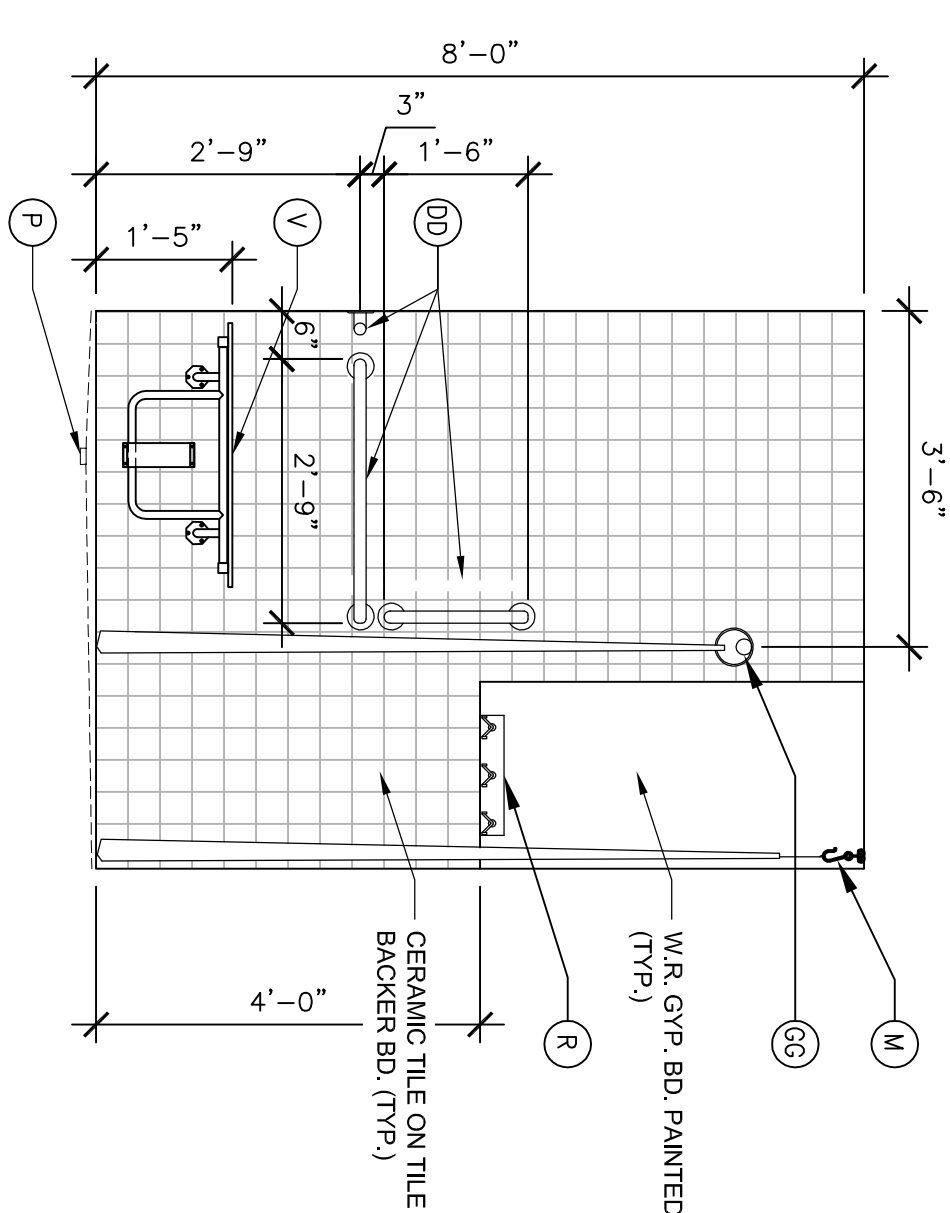
2 BARIATRIC TOILET ROOM 144
1/2" = 1'-0"



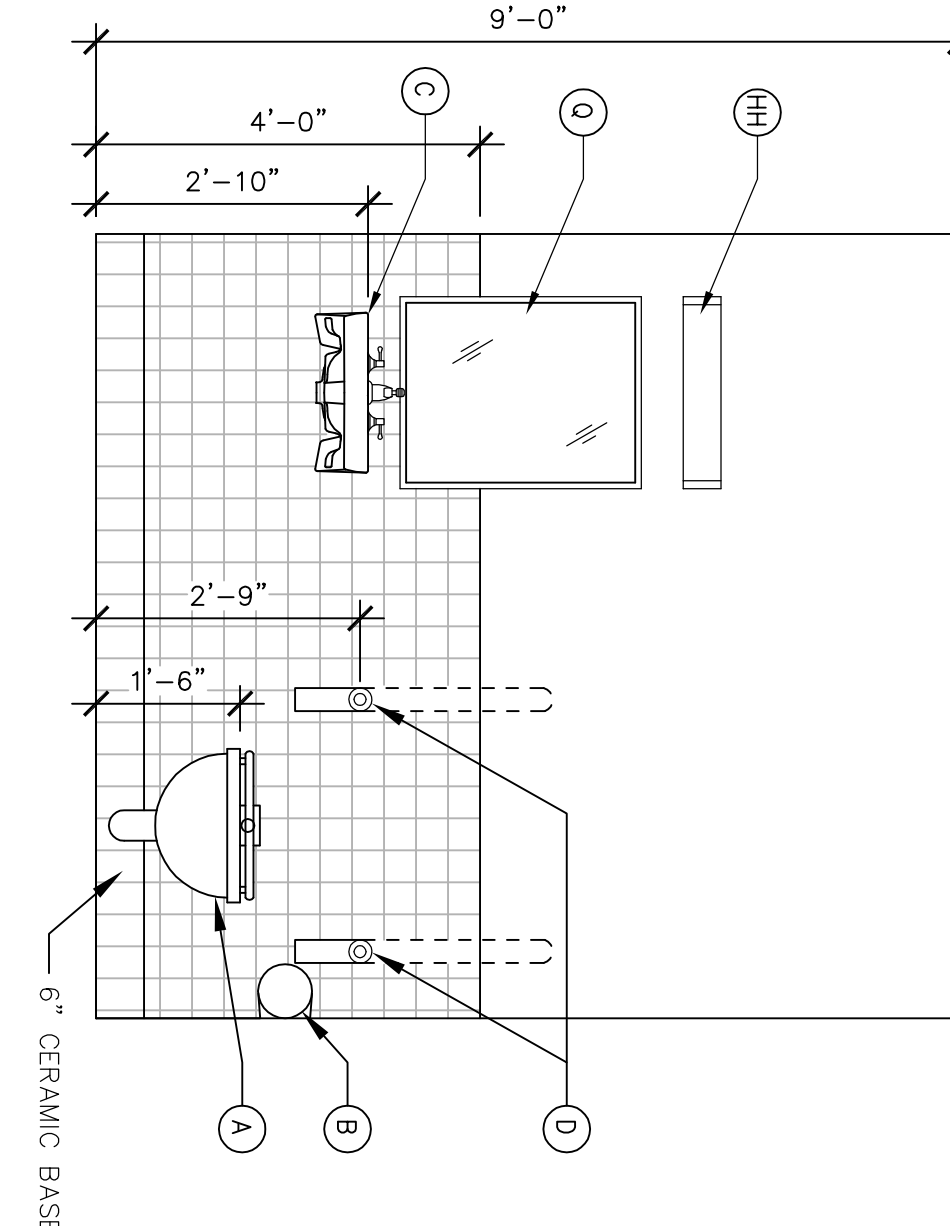
3 BARIATRIC TOILET ROOM 144
1/2" = 1'-0"



4 TUB/SHOWER ROOM
1/2" = 1'-0"



5 TUB/SHOWER ROOM
1/2" = 1'-0"



6 TUB/SHOWER ROOM
1/2" = 1'-0"

- LEGEND
- Ⓐ WALL MOUNTED WATER CLOSET
 - Ⓑ TOILET TISSUE DISPENSER
 - Ⓒ BARRIER FREE WALL MOUNTED SINK
 - Ⓓ FLIP UP BARRIER FREE GRAB BAR
 - Ⓔ UTILITY SINK
 - Ⓕ UNDER COUNTER REFRIGERATOR
 - Ⓖ CASEWORK (SEE ELEVATION DRAWINGS)
 - Ⓗ SURFACE MOUNTED HAND DRYER
 - Ⓘ COUNTERTOP SINK
 - Ⓛ DECK MOUNTED SOAP DISPENSER
 - Ⓜ WALL MOUNTED WHITE BOARD/ CORK BOARD
 - Ⓝ CURTAIN & CURTAIN TRACK
 - Ⓟ BARRIER FREE SHOWER HEAD
 - Ⓠ FLOOR DRAIN
 - Ⓡ WALL MOUNTED MIRROR & MEDICINE CABINET
 - Ⓢ HOOKS AND/OR SHELVES
 - Ⓣ LOCKERS
 - Ⓤ SHOWER STALL
 - Ⓡ TOWEL BAR
 - Ⓢ SHOWER SEAT
 - Ⓣ MEDS CARTS/ PIVOT CARTS
 - Ⓤ ARJO TUB
 - Ⓡ RANGE
 - Ⓢ REFRIGERATOR
 - Ⓣ WARNING TRAY
 - Ⓤ FLOOR MOUNTED WATER CLOSET
 - Ⓡ INTEGRAL SOLID RESIN SINK W/ BACKSLASH AND APRON
 - Ⓣ BARRIER FREE GRAB BAR
 - Ⓡ HEADBOARD
 - Ⓣ NURSE CALL W/ PULL CORD
 - Ⓡ CURTAIN AND CURTAIN ROD
 - Ⓣ LIGHT FIXTURE (SEE ELEC. DRAWINGS)
- NOTE:
REFER TO INTERIOR ELEVATIONS FOR MOUNTING HEIGHTS

Revisions	Date
100% Submission	7/02/10
90% Submission	5/27/10
60% Submission	4/22/10

VA WESTERN NEW YORK HEALTHCARE SYSTEM
3495 BAILEY AVENUE
BUFFALO, NEW YORK 14215

URS BUFFALO, NY.,
77 GOODELL ST
716-856-5636

Architect

stomp

CARDIOLOGY	DATE	ENGINEERING MANAGER	DATE
INFECTION CONTROL	DATE	CARLINE MANAGER	DATE
SAFETY OFFICER	DATE	CHIEF OF STAFF	DATE

Drawing Title		Project Title		Date	
INTERIOR ELEVATIONS		RENOVATION OF BLDG. #1, 2ND FLOOR, B-WARD		JULY 2, 2010 (UPDATED 10/07/10)	
MEDICAL CENTER DIRECTOR	DATE	Building Number	Checked JMC	Drawn ADA	Station No. 528
ASSOCIATE MEDICAL CENTER DIRECTOR	DATE	Location V.A.M.C. BAYVIEW, NEW YORK			

09-352 AS-901

