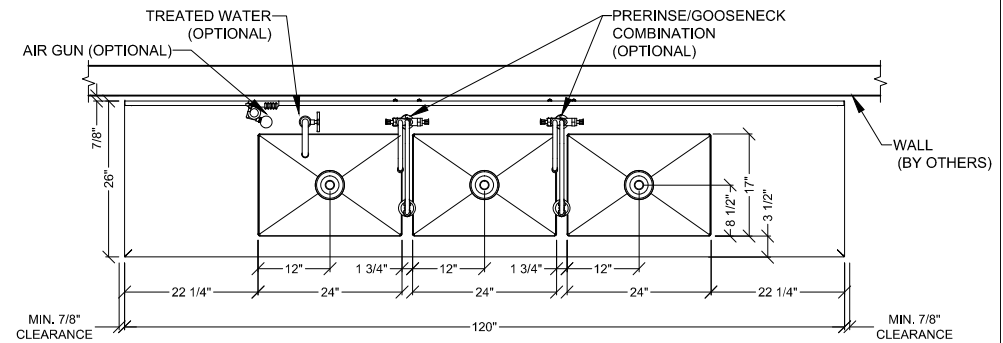
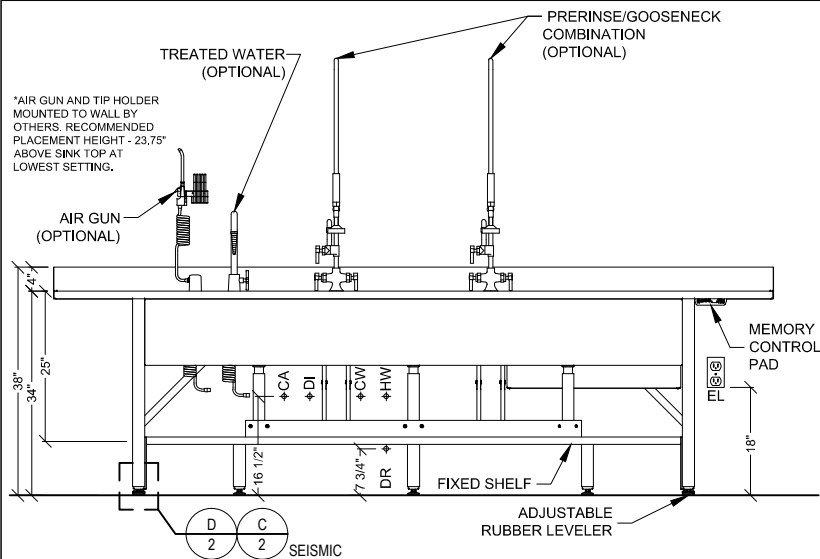


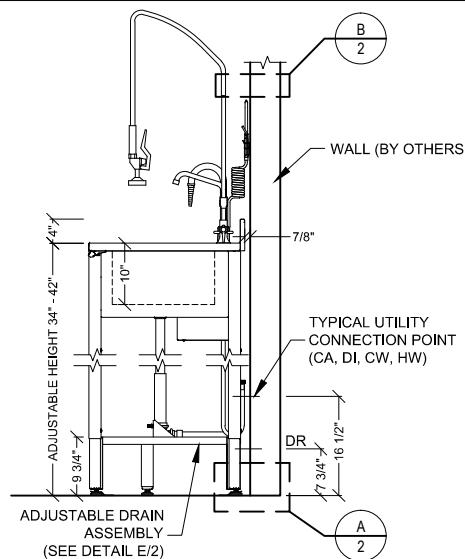
PLAN VIEW
SITE PREPARATION (TYPICAL CONFIGURATION)



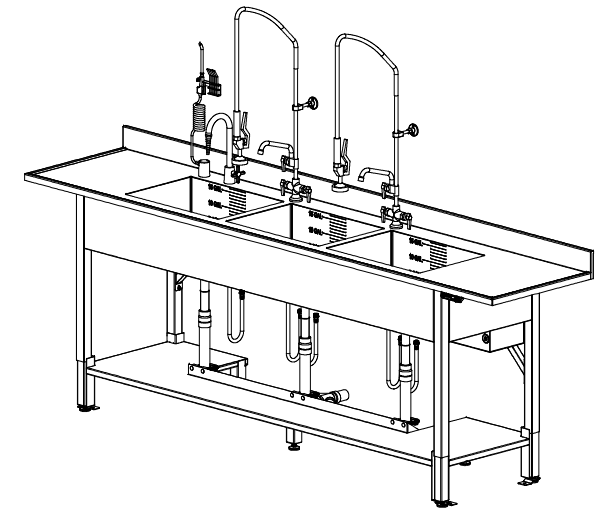
PLAN VIEW
EQUIPMENT LAYOUT (TYPICAL CONFIGURATION)



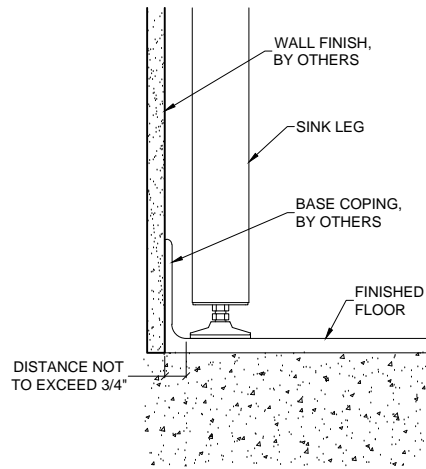
FRONT ELEVATION
TRIPLE BASIN PROCESSING SINK



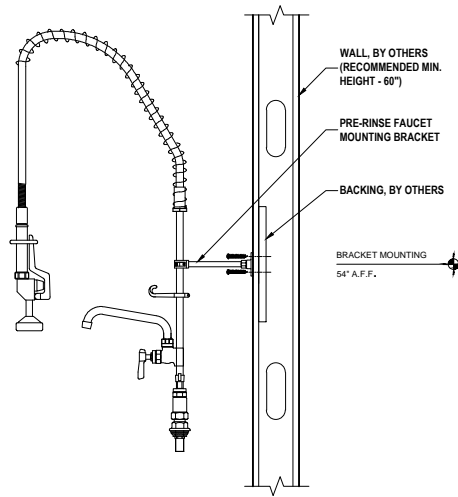
SIDE ELEVATION
TRIPLE BASIN PROCESSING SINK



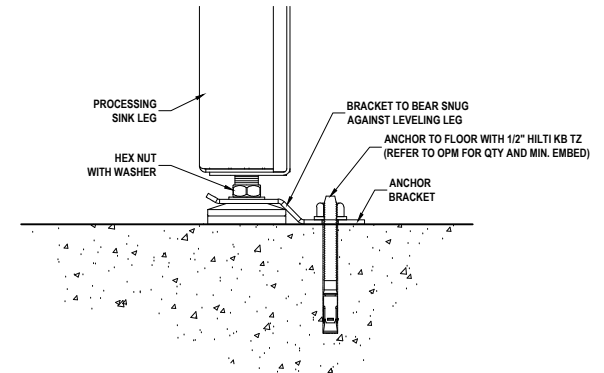
ISOMETRIC VIEW
TRIPLE PROCESSING SINK (NTS)



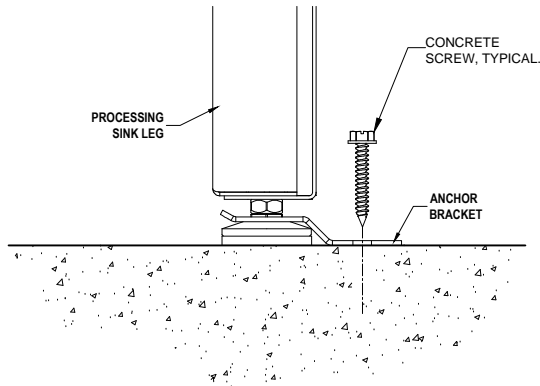
**TYPICAL BASE COPING
AT PROCESSING SINK**
N.T.S.



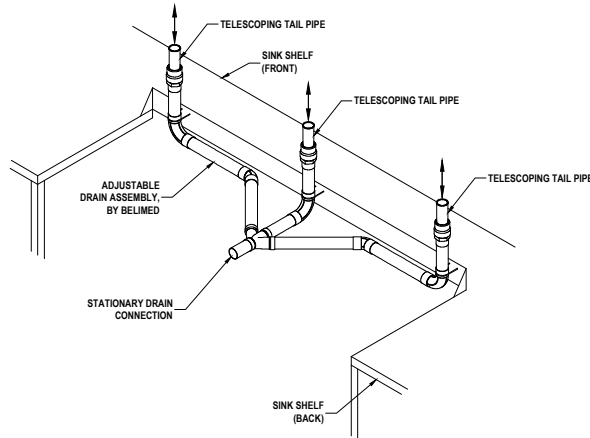
**TYP. PRE-RINSE FAUCET MOUNTING
PROCESSING SINK**
N.T.S.



**TYP. SEISMIC ANCHORING DETAIL
PROCESSING SINK**
N.T.S.



**TYP. ANCHORING DETAIL (NON-SEISMIC)
PROCESSING SINK**
N.T.S.



**TYP. ADJUSTABLE DRAIN ASSEMBLY
PROCESSING SINK**
N.T.S.

MODEL PS9637-AH

ADJUSTABLE HEIGHT TRIPLE BASIN PROCESSING SINK

TECHNICAL DRAWING

Typical installation details for a PS9637 Adjustable Height Triple Basin Processing Sink.

Dwg. No. :	CUT-9637-AH	Rev. :	E
Drawn By :	A. HERRON	Date :	3/11/16
Scale :	3/8" = 1'	Page :	2 of 3

DRAIN

- ☐ STANDARD
☐ KNEE OPERATED

FAUCET

- ☐ NONE
☐ STANDARD GOOSENECK
☐ PRE-RINSE / GOOSENECK COMBINATION
☐ TREATED WATER (DI)

AIR GUN

- ☐ STANDARD
☐ AIR/WATER

BACK SPLASH HEIGHT

- ☐ 4"
☐ 6"
☐ 12"

SIDE SPLASH

- ☐ LEFT
☐ RIGHT
☐ NONE

WORK FLOW

- ☐ LEFT - TO - RIGHT
☐ RIGHT - TO - LEFT

ADDITIONAL ATTACHMENTS

- ☐ ADJUSTABLE DRAIN ASSEMBLY - PVC
☐ ADJUSTABLE DRAIN ASSEMBLY - COPPER
☐ SEISMIC ANCHORING KIT

PROCESSING SINK PS9637-AH UTILITY REQUIREMENTS

REQUIRED INPUTS

Symbol	Description	Value	Utility Notes	Connection Method	Final Utility Conn. By:	
					Others	Belimed
HW	Utility:	Hot Water	Quality of feed water meets EPA drinking water standards.	Flex	X	
	Connection Size/Type:	1/2 inch / MNPT				
	Temperature:	Min: 120° F Max: 140° F				
	Pressure:	Min: 20 Max: 60 psig				
CW	Utility:	Cold Water	Quality of feed water meets EPA drinking water standards.	Flex	X	
	Connection Size/Type:	1/2 inch / MNPT				
	Temperature (Max):	70° F				
	Pressure:	Min: 20 Max: 60 psig				
DI (OPTIONAL)	Utility:	Deionized Water		Flex	X	
	Connection Size/Type:	1/2 inch / MNPT				
	Pressure:	Min: 20 Max: 60 psig				
CA (OPTIONAL)	Utility:	Compressed Air	Air must be dry and oil free.	Flex	X	
	Connection Size/Type:	3/8 inch / FNPT				
	Pressure (Max):	30 psig				
DR	Utility:	Drain	P-Trap to be provided and plumbed by others.	Hard Pipe	X	
	Connection Size/Type:	1 1/2 inch / NPS				
EL	Utility:	Electrical	Sink includes 6 ft. power cord with NEMA5-15 hospital grade plug, right exit.	Receptacle	X	
	Voltage:	115 VAC				
	Watts:	140 W				

PHYSICAL SPECIFICATIONS

	Parameter:	Weights	
	Transport Weight:	538 lbs	
	Operating Weight:	829 lbs	
	Floor Space Required:	120 inch (wide) x 26 inch (deep)	
	OSHPD Number:	OPM-0231-13	
Additional Information:			
MNPT = Male National Pipe Thread -FNPT = Female National Pipe Thread All utility supplies and connections are to be provided by others, per local code. Braided hoses are to be used and need to have 12" to 13" of play in order to allow sink to raise and lower. *Suggested dimensions may need to be modified per local code.			
			TS-9637-AH_RevG

MODEL PS9637-AH

ADJUSTABLE HEIGHT TRIPLE BASIN PROCESSING SINK

TECHNICAL DATA		Dwg. No. :	CUT-9637-AH	Rev. :	E
Options list and technical data for the installation of an Adjustable Height PS9637 Triple Basin Processing Sink.		Drawn By :	A. HERRON	Date :	3/11/16
		Scale :	NONE	Page :	3 of 3