

# KMD-460MAH

## MODULAR CRESCENT CUBER

Item # \_\_\_\_\_

Project: \_\_\_\_\_

Qty: \_\_\_\_\_

\* AutoCad available on KCL

KMD-460MAH

I/15

Item# 13346

### CUBER DIMENSIONS

W x D x H

**KMD-460MAH**




30 x 24<sup>1/4</sup> x 22<sup>1/8</sup>

### KMD-460MAH

Air-Cooled

Shown on an optional  
Lancer 30" Dispenser



- Up to 460 lbs. of ice production per 24 hours
  - Ice on beverage design
  - Durable stainless steel exterior
  - Individual crescent cube
  - Protected by H-GUARD Plus Antimicrobial Agent 
  - CycleSaver Design 
  - EverCheck alert system 
  - Stainless steel evaporator
  - Removable air filters
  - Front air inlet panels available for side-by-side application (used with HS-0230 Kit)
  - R-404A Refrigerant
  - Not recommended for side-by-side
- \* The KMD-460MAH is ENERGY STAR qualified.

Also available on Bins:  
B-500PF/SF\*  
BD-500PF/SF

\*used with separate HS Kit  
HS-2129

### Warranty

Valid in United States, Canada, Puerto Rico, & U.S. Territories. Contact factory for warranty in other countries.

Three Year - Parts & Labor on entire machine.

Five Year - Parts & Labor on Evaporator.

Five Year - Parts on; Compressor, air-cooled condenser coil.



© HOSHIZAKI AMERICA, INC.

618 Hwy, 74 S., Peachtree City, GA 30269

TEL 1-800-438-6087

FAX 1-800-345-1325

www.hoshizaki.com



# KMD-460MAH MODULAR CRESCENT CUBER

**DIMENSIONS**  
W x D x H  
**KMD-460MAH**  
30 x 24<sup>1/4</sup> x 22<sup>1/8</sup>

• Air-cooled

### AIR-COOLED

Water Temp° F.	50°	70°	90°
Air Temp° F.	70°	457	436
	80°	441	409
	90°	436	387

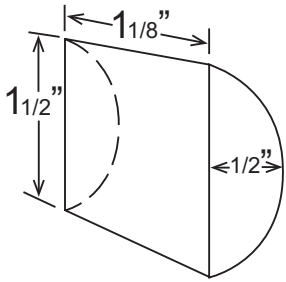
### UTILITY CONSUMPTION

Model Number	Ice Production Per Cycle		KWH per 100 LBS. 90/70	Potable Water Gal. per 100 lbs. 90/70	Condenser Water Gal. per 100 lbs. 90/70
	Lbs.	Cubes			
KMD-460MAH	9.6	432	5.48	18.9	N/A

### SPECIFICATIONS

Model Number	Condenser	Amperage	Min. Circuit Ampacity	Shipping Weight
KMD-460MAH	Air-Cooled	10.0	15A	170 lbs.

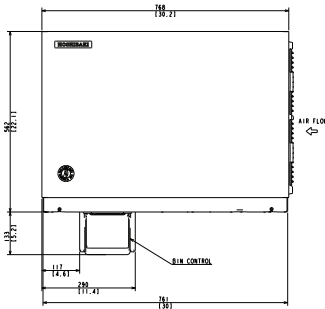
### \*KM CUBE DIMENSIONS



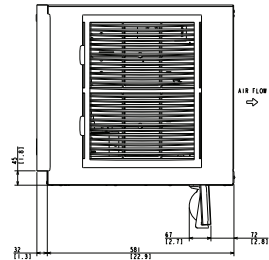
\*approximate size in inches, image not to scale

### ELECTRICAL & PLUMBING/KMD-460MAH

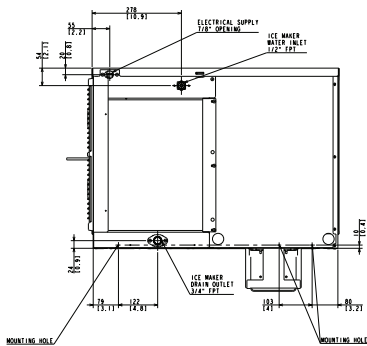
- 115/60/1
- 15 amp Max Fuse/HACR Breaker Size
- Icemaker Water Supply Line: Minimum 1/4" Nominal ID Copper Water Tubing or Equivalent
- Icemaker Drain Line: Minimum 3/4" Nominal ID Hard Pipe or Equivalent



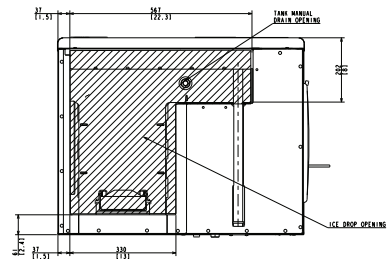
FRONT VIEW (Air-cooled)



SIDE VIEW (Air-cooled)



BACK VIEW (Air-cooled)



BOTTOM VIEW (Air-cooled)

### OPERATING LIMITS

- Ambient Temp Range 45 - 100°F
- Water Temp Range 45 - 90°F
- Water Pressure 10 - 113psig
- Voltage Range 104 - 127V

### SERVICE

- Panels easily removed and all components accessible for service.
- Removeable/cleanable air filters. (Air-Cooled model only)



© HOSHIZAKI AMERICA, INC.

618 Hwy, 74 S., Peachtree City, GA 30269

TEL 1-800-438-6087

FAX 1-800-345-1325

www.hoshizaki.com

Printed in U.S.A.

