



08.30.2017



08.30.2017



08.30.2017



08.30.2017



08.30.2017



08.30.2017

Carrier
Corporation

7310 WEST MORRIS STREET
INDIANAPOLIS, IN 46231 U.S.A.

MODEL
MODELE 38AUSB25A0A5A0A2C0

SERIAL
NUMÉRO DE SÉRIE 3112U34699

FACTORY CHARGED / CHARGÉ EN USINE



Carrier
Corporation

7310 WEST MORRIS STREET
INDIANAPOLIS, IN 46231 U.S.A.

MODEL
MODELE 38AUSB25A0A5A0A2C0

SERIAL
NUMÉRO DE SÉRIE 3112U34699

REFRIGERANT SYSTEM R-410A
RÉFRIGÉRANT SYSTÈME R-410A



	QTY QTE	VOLTS AC VOLTS ALT	PH	HZ	RLA	LRA	REF. SYSTEM R-410A RÉF. SYSTÈME R-410A	TEST PRESSURE GAGE PRESSION DE MANO. DE TEST
COMPR A	1	208/230	3	60	30.1	225	14 LBS LIVRES 6.4 Kg	HI HAUT 650 PSI 4481.5 kPa
COMPR B	1	208/230	3	60	30.1	225	14 LBS LIVRES 6.4 Kg	LO BAS 450 PSI 3102.6 kPa
FAN MOTOR MOTEUR SOUFFLERIE	QTY QTE	VOLTS AC VOLTS AL	PH	HZ	FLA			
OUTDOOR EXTÉRIEUR	2	208/230	1	60	1.5			
OUTDOOR EXTÉRIEUR	2	208/230	1	60	1.5			
OTHER AUTRES								
OTHER AUTRES								

CHARGE SYSTEM PER INSTALLATION INSTRUCTIONS
FOR OUTDOOR INSTALLATION

CHARGER LE SYSTÈME DANS LE RESPECT DES INSTRUCTIONS
D'INSTALLATION POUR UNE INSTALLATION À L'EXTÉRIEUR

MIN CIRCUIT AMPS

AMPÉRAGE MIN. DU CIRCUIT

78.5

MIN UNIT DISCONNECT
DISJONCTEUR MIN

FLA
82

LRA
467

CONTROL PANEL SCCR 5KA RMS SYMMETRICAL VOLTAGE:

100

253

MAX

POWER
SUPPLY /
ALIMENTATION
ÉLECTRIQUE

3

PH

60

HZ

PERMISSIBLE
VOLTAGE AT UNIT /
VOLTAGE PERMIS
DE L'UNITÉ

253

MAX

187

MIN

POWER
SUPPLY /
ALIMENTATION
ÉLECTRIQUE

PH

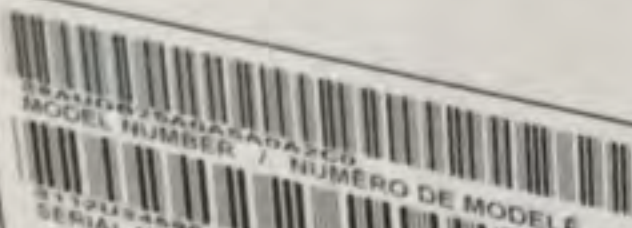
HZ

PERMISSIBLE
VOLTAGE AT UNIT /
VOLTAGE PERMIS
DE L'UNITÉ

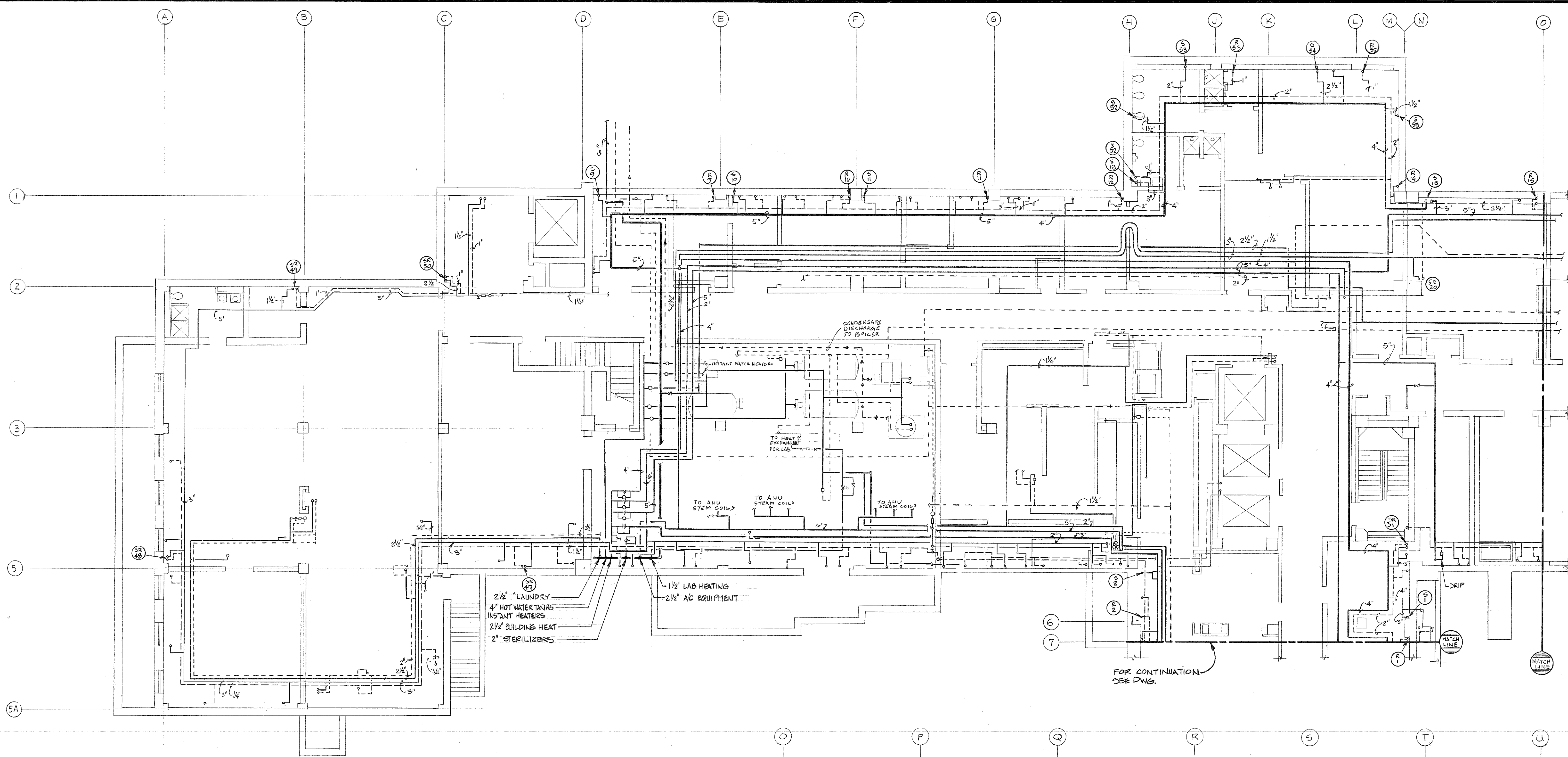
MAX

MIN

MAX FUSE OR HACR TYPE BRKR AMPS
FUSIBLE OU DISJONCTEUR HACR MAX AMPS

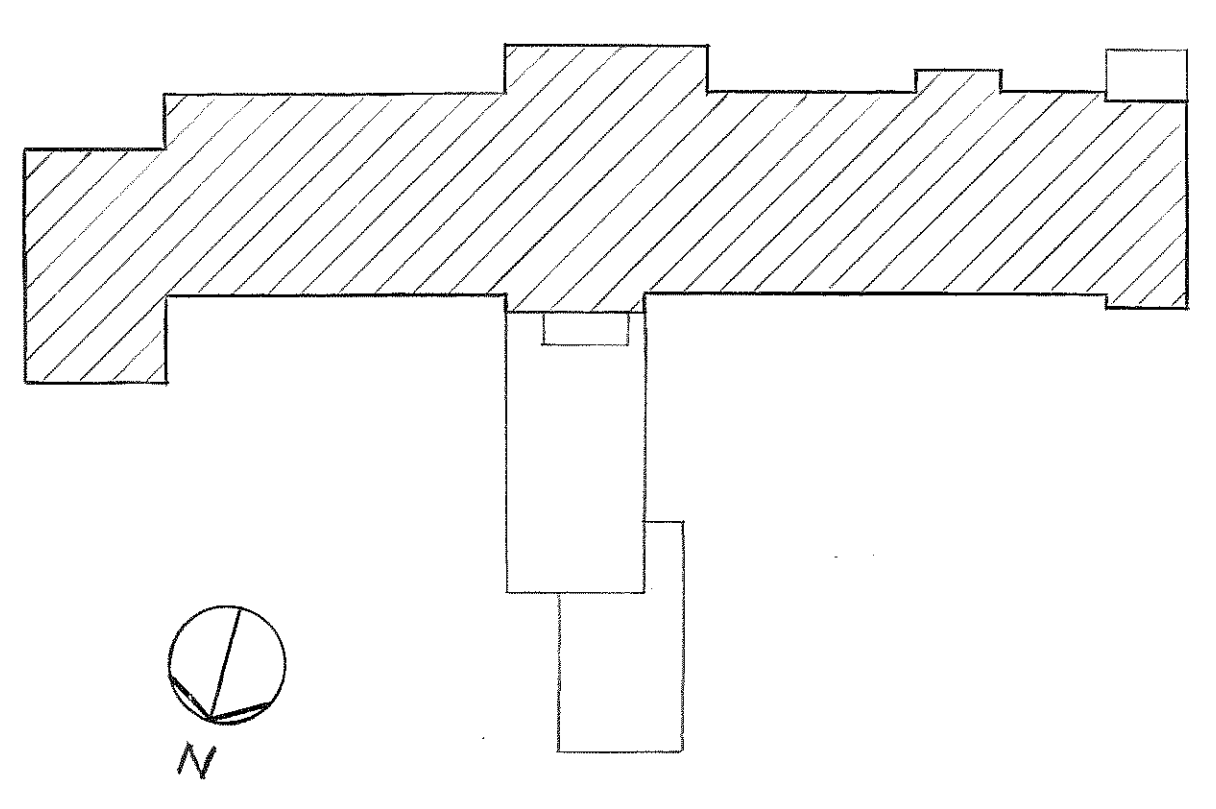


three inches = one foot
one and one-half inches = one foot
one inch = one foot
three-quarters inch = one foot
one-half inch = one foot
three-eighths inch = one foot
one-quarter inch = one foot
one-eighth inch = one foot

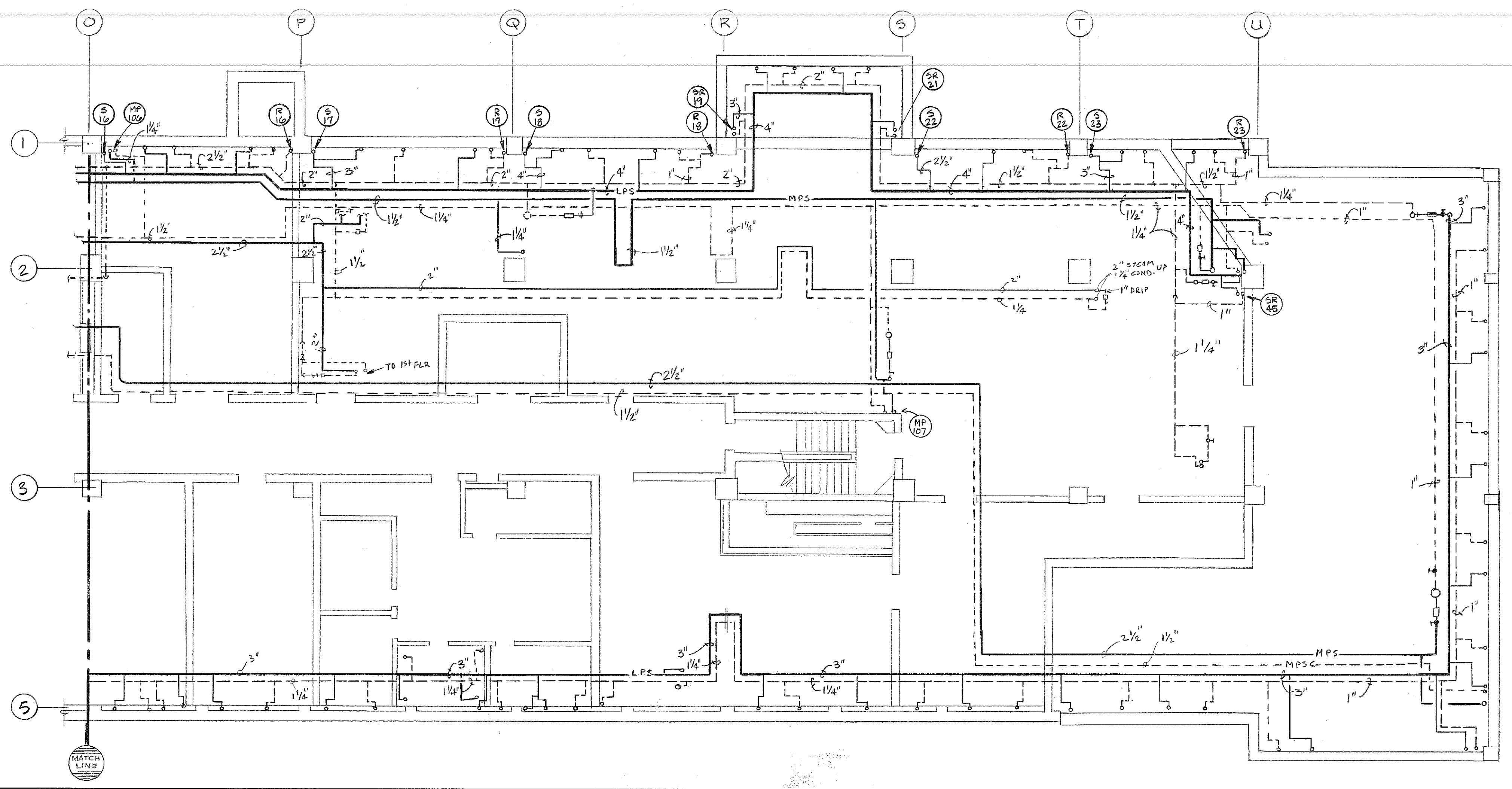


PARTIAL BASEMENT FLOOR PLAN
SCALE: 1/8" = 1'-0"

- NOTES
1. Replace all steam and condensate branches to single radiators on the floor above. Piping should extend from the steam main to the radiator valve for the steam and from the condensate main to the radiator steam trap for the condensate branch. All piping must be steel schedule 80.
 2. Insulate all steam and condensate piping existing and new as per specifications.
 3. Provide markers for pipe and size and identification for all steam and condensate piping as per specifications.
 4. Locations and sizes of piping on this drawing are approximate. Produce as built drawing showing all piping, existing and new, with sizes and steam pressures as per specification No. 09900 PIPING.



BUILDING NO 1 KEY PLAN



Revisions		Date	Drawing Title PARTIAL BASEMENT FLOOR PLAN STEAM PIPE REPLACEMENT		Project Title STEAM PIPE REPLACEMENT AND ASBESTOS REMOVAL		Date 8/19/89
			Approved: Division Chief		Building Number 1		Project No. 562-84-110
			Approved: Service Director		Checked PKP		Drawing No. H-2
					Drawn WMO		Dwg. 2 of 3
					Location ERIE, PENN SYLVANIA		

EI ASSOCIATES
ARCHITECTURE • ENGINEERING • CONSTRUCTION
15 White Plains Dr. • Tonawanda, NY 14150 • 716/861-4801
E.I. PROJECT NO. 55231C
Veterans Administration