



# Specifications

F.O.B St. Louis, Missouri 63102



**FWM3-22**

## OPTIONS:

- ☐ Interchangeable plastic lids designed for product flexibility
- ☐ Amber pans allows for visibility to easily check on inventory status
- ☐ 2-1/2" deep pans
- ☐ Single or double handled pans

## AGENCY LISTING:



**DUKE MANUFACTURING CO.**  
2305 N. Broadway  
St. Louis, MO 63102

800.735.3853 Toll Free  
314.231.5074 Fax  
[www.dukemfg.com](http://www.dukemfg.com)

## Approval Stamp(s):

### PRODUCT INFORMATION:

PROJECT: \_\_\_\_\_

ITEM: \_\_\_\_\_

QUANTITY: \_\_\_\_\_

MODEL:

### Product Holding Unit - FWM

- |           |                  |
|-----------|------------------|
| ■ FWM3-13 | 1 down, 3 across |
| ■ FWM3-14 | 1 down, 4 across |
| ■ FWM3-21 | 2 down, 1 across |
| ■ FWM3-22 | 2 down, 2 across |
| ■ FWM3-23 | 2 down, 3 across |
| ■ FWM3-24 | 2 down, 4 across |
| ■ FWM3-41 | 4 down, 1 across |
| ■ FWM3-42 | 4 down, 2 across |
| ■ FWM3-51 | 5 down, 1 across |

### BODY:

- Stainless Steel Exterior construction for durability and ease of construction
- Anodized aluminum surface, durable and easily cleaned
- Fully radiused curved corners that are easily cleaned
- No removable parts or screws or fasteners to clean around
- Cool to the touch thermoplastic front panel
- Interchangeable plastic lids designed for product flexibility
- Amber pans allows for visibility to easily check on inventory status

### HEATING:

- Flexible 300 Watt heaters for 208/ 230/ 240 volt
- Flexible 200 Watt heaters for 120 volt
- Individually controlled rows for customized heating solutions
- Quick heat up approximately 15 minutes

### CONTROLS

- Ability to control different day parts
- Web based programming
- Upload programs through USB port no manager reprogramming necessary
- Automatic Pan linkability for product freshness
- Timer to ensure no expired product is to be served
- Simplistic system makes it easy for employees to use and easy to manage
- Alphanumeric displays are easy to read

### SHORT FORM SPECIFICATIONS:

**Duke Product Holding Units** - Thermostatically controlled heaters surround extruded aluminum for consistent heating of pre-cooked food. Body shall be constructed of stainless steel with cool-to-touch thermostatic front panel. Interchangeable, high-temperature lids control the product environment. Alphanumeric displays and web based programming track product hold times and temperatures.

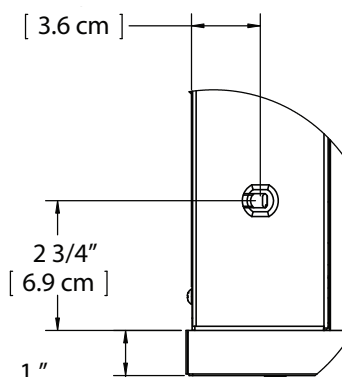
PRODUCT HOLDING UNIT - FWM

Catalog No. FWM3

A.I.A. File No. 35-C-13

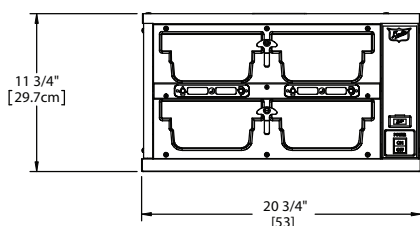
PHU-01

# Duke®

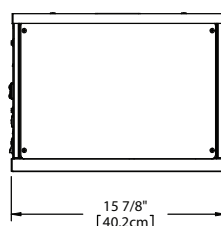


## PRODUCT HOLDING UNIT

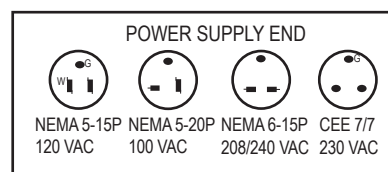
■ FWM3-13	1 down, 3 across
■ FWM3-14	1 down, 4 across
■ FWM3-21	2 down, 1 across
■ FWM3-22	2 down, 2 across
■ FWM3-23	2 down, 3 across
■ FWM3-24	2 down, 4 across
■ FWM3-42	4 down, 2 across
■ FWM3-51	5 down, 1 across



FRONT



SIDE



6 FT. POWER CORD DETAIL

DIMENSIONS:

FREIGHT CLASS: 100

Model	Height		Width		Depth		Pan Size						Cube ft. crated	Crated Ship Weight	
	in	cm	in	cm	in	cm	L		W		H			lbs	kg
							in	cm	in	cm	in	cm			
FWM3-13	7	17.8	29	73.7	16	40.2	12.7	42.4	6.9	17.5	2.5	5.1	8.3	75	34.1
FWM3-14	7	17.8	37	94	16	40.2	12.7	42.4	6.9	17.5	2.5	5.1	10.2	111	50.5
FWM3-21	12	30.5	14	35.6	16	40.2	12.7	42.4	6.9	17.5	2.5	5.1	3.4	67	30.5
FWM3-22	12	30.5	21	53.3	16	40.2	12.7	42.4	6.9	17.5	2.5	5.1	6.6	91	41.4
FWM3-23	12	30.5	29	73.7	16	40.2	12.7	42.4	6.9	17.5	2.5	5.1	8.3	113	51.4
FWM3-24	12	30.5	37	94.0	16	40.2	12.7	42.4	6.9	17.5	2.5	5.1	10.2	141	64.1
FWM3-41	22	55.9	14	35.6	16	40.2	12.7	42.4	6.9	17.5	25	5.1	8.5	125	56.8
FWM3-42	22	55.9	21	53.3	16	40.2	12.7	42.4	6.9	17.5	2.5	5.1	7.9	100	45.0
FWM3-51	27	68.6	14	35.6	16	40.2	12.7	42.4	6.9	17.5	2.5	5.1	8.5	125	56.8

## ELECTRICAL SPECIFICATIONS:

Model	100 Volt - HZ 50/60			120 Volt - HZ 50/60			208 Volt - HZ 50/60			230 Volt - HZ 50/60			240 Volt - HZ 50/60		
	Watts	Amps	NEMA	Watts	Amps	NEMA	Watts	Amps	NEMA	Watts	Amps	CEE	Watts	Amps	NEMA
FWM3-13	600	6	5-20P	600	5.2	5-15P	900	4.3	6-15P	900	3.9	7/7	900	3.8	6-15P
FWM3-14	800	8	5-20P	800	6.7	5-15P	1200	5.8	6-15P	1200	5.2	7/7	1200	5.0	6-15P
FWM3-21	600	6.0	5-20P	600	5.0	5-15P	600	2.9	6-15P	600	2.6	7/7	600	2.5	6-15P
FWM3-22	800	8.0	5-20P	800	6.7	5-15P	1200	5.8	6-15P	1200	5.2	7/7	1200	5.0	6-15P
FWM3-23	1200	12.0	5-20P	1200	10.0	5-15P	1800	8.7	6-15P	1800	7.8	7/7	1800	7.5	6-15P
FWM3-24	1600	16.0	5-20P	1600	13.3	5-15P	2400	11.5	6-15P	2400	10.4	7/7	2400	10.0	6-15P
FWM3-41	800	8.0	5-20P	800	7.0	5-15P	1200	6.0	6-15P	1200	6.0	7/7	1200	6.0	5-15P
FWM3-42	1600	16.0	5-20P	1600	13.3	5-15P	2400	11.5	6-15P	2400	10.4	7/7	2400	10.0	6-15P
FWM3-51	1000	10.0	5-20P	1000	8.3	5-15P	1500	7.2	6-15P	1500	6.5	7/7	1500	6.3	6-15P



**DUKE MANUFACTURING CO.**  
**2305 N. Broadway**  
**St. Louis, MO 63102**

**800.735.3853 Toll Free**  
**800.231.1130 In Missouri**  
**314.231.5074 Fax**  
**www.dukemfg.com**

Patent Info:  
 US 6175099; US 6262394; US RE 40, 290; SG 83896;  
 CN ZL00805894.6; SK 0509521; EP 1164852; CA 2,367,679  
 Other U.S. and Foreign Patents Pending

Specification subject to change

01/10  
 Printed in U.S.A  
 © 2010, Duke Manufacturing Co.