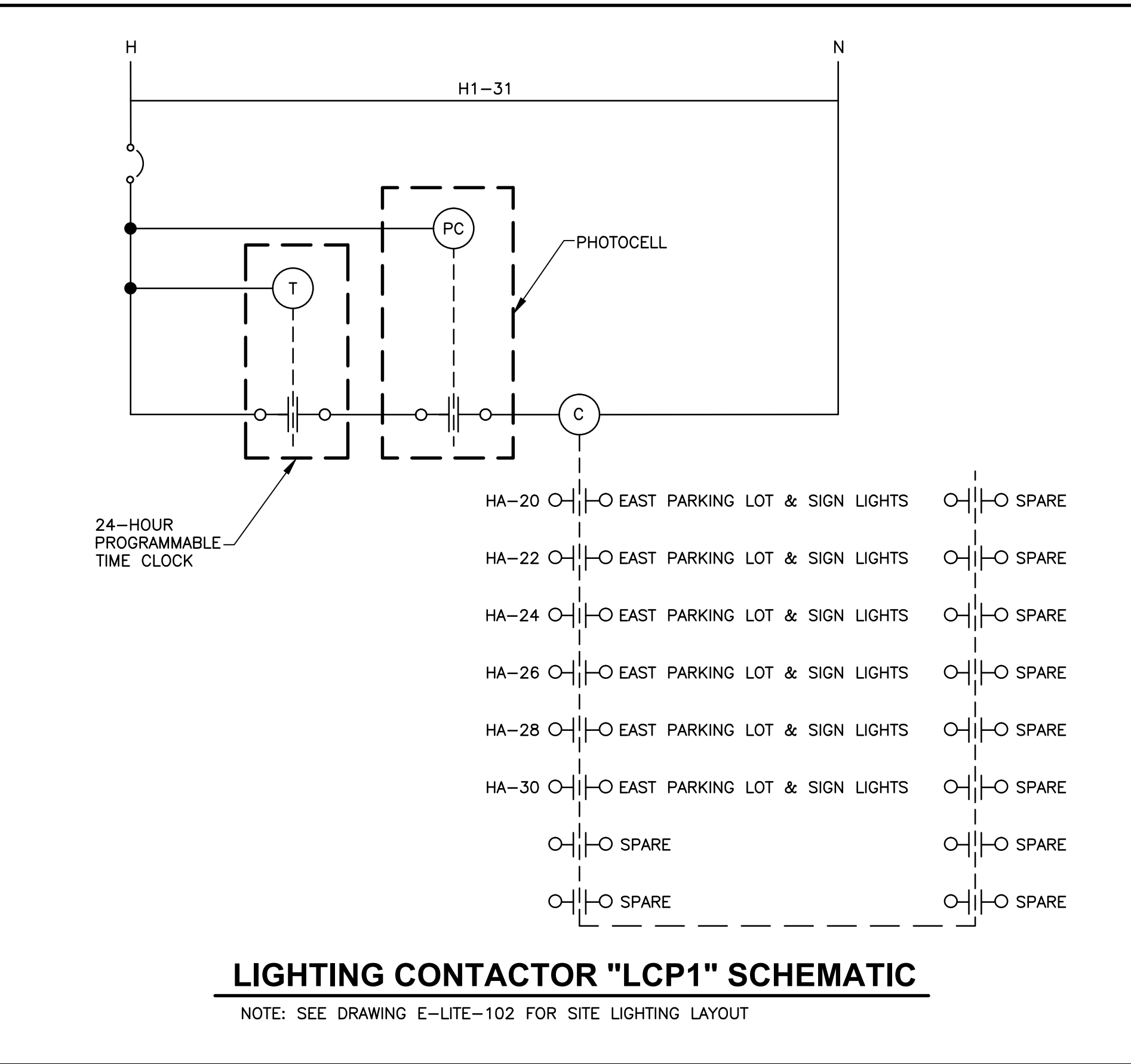


SHEET GENERAL NOTES

- FEDERAL OSHA SAFETY PROCEDURES, VA MEDICAL CENTER SAFETY PROCEDURES AND CORPS OF ENGINEERS SAFETY MANUAL EM-385-1-1 SHALL BE FOLLOWED WHILE WORKING IN AND AROUND ALL 15-kV, 5-kV AND 600 VOLT SYSTEMS.
- COORDINATE REMOVAL AND REPLACEMENT OF THE 15-kV SWITCHGEAR, 5-kV SUBSTATIONS AND 600-VOLT ELECTRICAL EQUIPMENT WITH THE U.S. ARMY CORPS OF ENGINEERS CONSTRUCTION MANAGER, CONTRACTING OFFICER'S TECHNICAL REPRESENTATIVE (COTR) AND VETERANS AFFAIRS MEDICAL CENTER (VAMC) ELECTRICAL MAINTENANCE SHOP SUPERVISOR.
- REFER TO SPECIFICATION **SECTION 01011, SUMMARY OF WORK FOR SUGGESTED SEQUENCE OF CONSTRUCTION**.
- ADDITIONAL DEMOLITION AND INSTALLATION INFORMATION FOR OTHER EQUIPMENT INCLUDING SWITCHGEAR, SWITCHBOARDS, PANELBOARDS, CABLES, CONDUITS, LIGHT FIXTURES, ETC. IS SHOWN ON OTHER DRAWINGS INCLUDED IN THIS SET.
- APPLY ADHESIVE "ARC FLASH AND SHOCK HAZARD" WARNING LABELS PER NFPA 70E TO ALL ELECTRICAL ITEMS SUCH AS PANEL BOARDS, MOTOR CONTROLLERS (STARTERS), SAFETY SWITCHES, SEPARATELY ENCLOSED CIRCUIT BREAKERS, INDIVIDUAL CIRCUIT BREAKERS AND CONTROLLERS IN SWITCHBOARDS, SWITCHGEAR AND MOTOR CONTROL ASSEMBLIES, SUBSTATION EQUIPMENT, CONTROL DEVICES AND OTHER SIGNIFICANT EQUIPMENT. ARC FLASH IDENTIFICATION INFORMATION AND LABELS WILL BE PROVIDED BY COTR.
- APPLY ADHESIVE MARKER TAPE TO THE FLOOR TO IDENTIFY CODE REQUIRED MINIMUM ACCESS AND WORKING SPACE IN FRONT OF ALL ELECTRICAL EQUIPMENT.
- BOLD LINETYPE INDICATES NEW WORK.
- CABLE LENGTHS SHOWN ARE ESTIMATES, TYP. FIELD VERIFY DISTANCES BEFORE INSTALLATION. DO NOT SPLICE NEW CABLE PULLS.

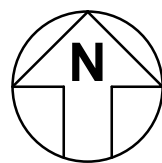
KEYNOTES

- FURNISH PANEL AS INDICATED HEREIN AND ON THE SWITCHBOARD AND PANEL BOARD REPLACEMENT SCHEDULE SHEET E-B205-701.
- PROVIDE (N) 16-POLE, 30A, 277V RATED LIGHTING CONTACTOR IN A NEMA 1 ENCLOSURE INCLUDING A PROGRAMMABLE TIME CLOCK, A REMOTE MOUNTED PHOTOCELL (FACING NORTH) AND RELAY. SEE SCHEMATIC (THIS DWG.)



MEZZANINE ELECTRICAL PANEL LAYOUT PLAN

SCALE: 1/8"=1'-0"



GROUND FLOOR ELECTRICAL PANEL LAYOUT PLAN

SCALE: 1/8"=1'-0"



CONSULTANTS:



GHD Inc.  
2235 Mercury Way, Suite 150  
Santa Rosa, California 95407 USA  
T 1 707 523 1010 F 1 707 527 8679  
W www.ghd.com

GENERAL CONTRACTOR:



HELIIX ELECTRIC  
CONSTRUCTORS • ENGINEERS

ARCHITECT:

Drawing Title  
**GROUND FLOOR AND MEZZANINE ELECTRICAL PANEL LAYOUT PLAN**

Approved: Project Director  
Medical Center Director:  
LAWRENCE H. CARROLL  
Chief Engineer:  
JAMES PRIDLIDES

Project Title  
**ELECTRICAL SYSTEM UPGRADES PROJECT 662-07-028ES**

Location  
**SFVA MEDICAL CENTER**  
Date  
JANUARY 3, 2010  
Checked  
SMD  
Drawn  
BAT

Project Number  
11054-07-001  
Building Number  
**205**  
Drawing Number  
**E-B205-101**

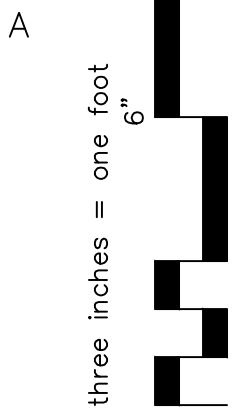
Dwg. 206 of 227

Office of  
Facilities  
Management

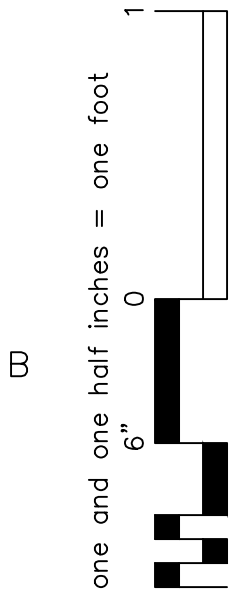




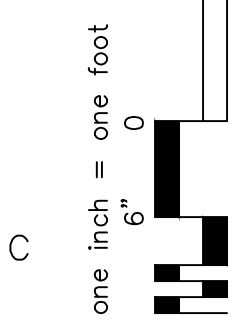
A



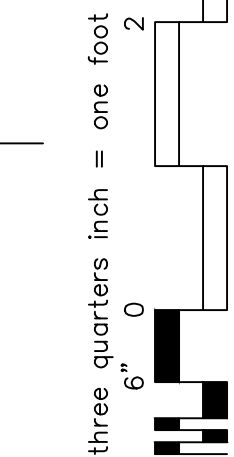
B



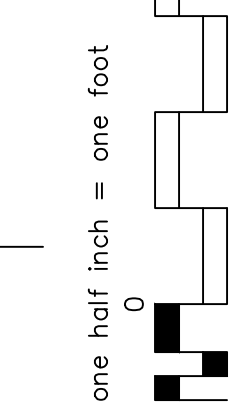
C



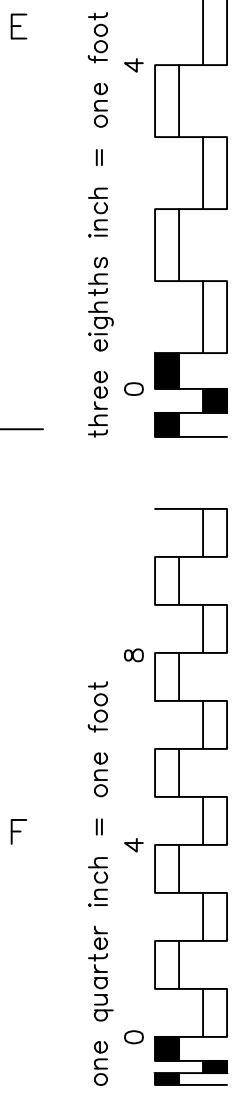
D



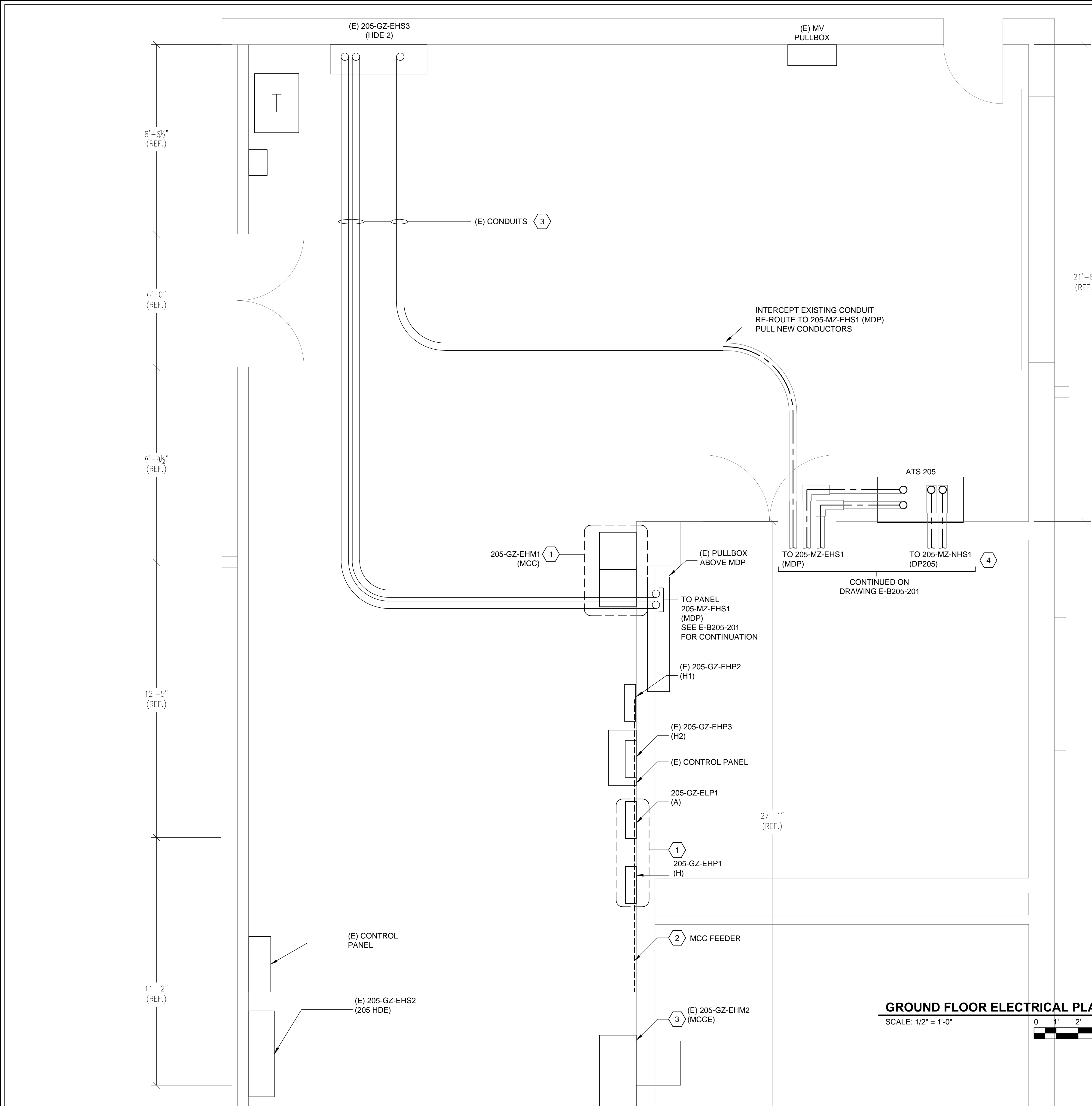
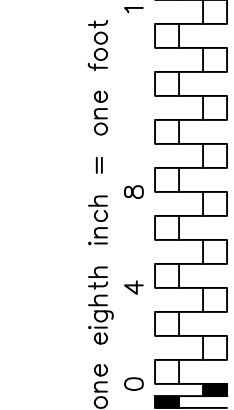
E



F

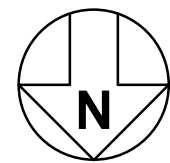
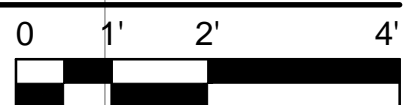


F



GROUND FLOOR ELECTRICAL PLAN

SCALE: 1/2" = 1'-0"



SHEET GENERAL NOTES

- FEDERAL OSHA SAFETY PROCEDURES, VA MEDICAL CENTER SAFETY PROCEDURES AND CORPS OF ENGINEERS SAFETY MANUAL EM-385-1-1 SHALL BE FOLLOWED WHILE WORKING IN AND AROUND ALL 15-kV, 5-kV AND 600 VOLT SYSTEMS.
- COORDINATE REMOVAL AND REPLACEMENT OF THE 15-kV SWITCHGEAR, 5-kV SUBSTATIONS AND 600-VOLT ELECTRICAL EQUIPMENT WITH THE U.S. ARMY CORPS OF ENGINEERS CONSTRUCTION MANAGER, CONTRACTING OFFICER'S TECHNICAL REPRESENTATIVE (COTR) AND VETERANS AFFAIRS MEDICAL CENTER (VAMC) ELECTRICAL MAINTENANCE SHOP SUPERVISOR.
- REFER TO SPECIFICATION **SECTION 01011, SUMMARY OF WORK FOR SUGGESTED SEQUENCE OF CONSTRUCTION**.
- ADDITIONAL DEMOLITION AND INSTALLATION INFORMATION FOR OTHER EQUIPMENT INCLUDING SWITCHGEAR, SWITCHBOARDS, PANELBOARDS, CABLES, CONDUITS, LIGHT FIXTURES, ETC. IS SHOWN ON OTHER DRAWINGS INCLUDED IN THIS SET.
- APPLY ADHESIVE "ARC FLASH AND SHOCK HAZARD" WARNING LABELS PER NFPA 70E TO ALL ELECTRICAL ITEMS SUCH AS PANEL BOARDS, MOTOR CONTROLLERS (STARTERS), SAFETY SWITCHES, SEPARATELY ENCLOSED CIRCUIT BREAKERS, INDIVIDUAL CIRCUIT BREAKERS AND CONTROLLERS IN SWITCHBOARDS, SWITCHGEAR AND MOTOR CONTROL ASSEMBLIES, SUBSTATION EQUIPMENT, CONTROL DEVICES AND OTHER SIGNIFICANT EQUIPMENT. ARC FLASH IDENTIFICATION INFORMATION AND LABELS WILL BE PROVIDED BY COTR.
- APPLY ADHESIVE MARKER TAPE TO THE FLOOR TO IDENTIFY CODE REQUIRED MINIMUM ACCESS AND WORKING SPACE IN FRONT OF ALL ELECTRICAL EQUIPMENT.
- BOLD LINETYPE INDICATES NEW WORK.
- CABLE LENGTHS SHOWN ARE ESTIMATES, TYP. FIELD VERIFY DISTANCES BEFORE INSTALLATION. DO NOT SPLICE NEW CABLE PULLS.

KEYNOTES

- PROVIDE PANEL AS INDICATED ON "PANEL REPLACEMENT SCHEDULE", DRAWING E-B205-701. RECONNECT ALL (E) BRANCH CIRCUIT WIRING TO THE PANEL. COORDINATE REPLACEMENT OF PANEL WITH THE VETERAN AFFAIRS CONTRACTING OFFICER'S TECHNICAL REPRESENTATIVE (COTR) AND AS INDICATED IN THE SEQUENCE OF CONSTRUCTION, SPECIFICATION SECTION 01010.
- REPLACE (E) EXPOSED CABLE FEEDER TO MCC WITH (3) #4/0 AWG AND (1) #6 AWG GND IN (1) 4" CONDUIT.
- EXISTING CONDUIT ROUTING SHOWN FOR INFORMATION ONLY. EXACT ROUTE MAY VARY FROM SHOWN.
- SEE SINGLE-LINE DIAGRAM(S) FOR CONDUIT AND CABLE SIZES.

CONSULTANTS:



GHD Inc.  
2235 Mercury Way, Suite 150  
Santa Rosa, California 95407 USA  
T 1 707 523 1010 F 1 707 527 8679  
W www.ghd.com

GENERAL CONTRACTOR:



HELIX ELECTRIC  
CONSTRUCTORS • ENGINEERS

ARCHITECT:

Drawing Title

**GROUND FLOOR ELECTRICAL PLAN**

Approved: Project Director

Medical Center Director:  
LAWRENCE H. CARROLL  
Chief Engineer:  
JAMES PRIDLIDES

Project Title

**ELECTRICAL  
SYSTEM UPGRADES  
PROJECT 662-07-028ES**

Location

**SFVA MEDICAL CENTER**

Date

JANUARY 3, 2010

Checked

SMD

Drawn

**CSC**

Project Number

11054-07-001

Building Number

**205**

Drawing Number

**E-B205-202**

Dwg 210 of 227

**Office of  
Facilities  
Management**





SHEET GENERAL NOTES

1. FEDERAL OSHA SAFETY PROCEDURES, VA MEDICAL CENTER SAFETY PROCEDURES AND CORPS OF ENGINEERS SAFETY MANUAL EM-385-1-1 SHALL BE FOLLOWED WHILE WORKING IN AND AROUND ALL 15-kV, 5-kV AND 600 VOLT SYSTEMS.

2. COORDINATE REMOVAL AND REPLACEMENT OF THE 15-kV SWITCHGEAR, 5-kV SUBSTATIONS AND 600-VOLT ELECTRICAL EQUIPMENT WITH THE U.S. ARMY CORPS OF ENGINEERS CONSTRUCTION MANAGER, CONTRACTING OFFICER'S TECHNICAL REPRESENTATIVE (COTR) AND VETERANS AFFAIRS MEDICAL CENTER (VAMC) ELECTRICAL MAINTENANCE SHOP SUPERVISOR.

3. REFER TO SPECIFICATION SECTION 01011, SUMMARY OF WORK FOR SUGGESTED SEQUENCE OF CONSTRUCTION.
4. ADDITIONAL DEMOLITION AND INSTALLATION INFORMATION FOR OTHER EQUIPMENT INCLUDING SWITCHGEAR, SWITCHBOARDS, PANELBOARDS, CABLES, CONDUITS, LIGHT FIXTURES, ETC. IS SHOWN ON OTHER DRAWINGS INCLUDED IN THIS SET.

5. APPLY ADHESIVE "ARC FLASH AND SHOCK HAZARD" WARNING LABELS PER NFPA 70E TO ALL ELECTRICAL ITEMS SUCH AS PANEL BOARDS, MOTOR CONTROLLERS (STARTERS), SAFETY SWITCHES, SEPARATELY ENCLOSED CIRCUIT BREAKERS, INDIVIDUAL CIRCUIT BREAKERS AND CONTROLLERS IN SWITCHBOARDS, SWITCHGEAR AND MOTOR CONTROL ASSEMBLIES, SUBSTATION EQUIPMENT, CONTROL DEVICES AND OTHER SIGNIFICANT EQUIPMENT. ARC FLASH IDENTIFICATION INFORMATION AND LABELS WILL BE PROVIDED BY COTR.
6. APPLY ADHESIVE MARKER TAPE TO THE FLOOR TO IDENTIFY CODE REQUIRED MINIMUM ACCESS AND WORKING SPACE IN FRONT OF ALL ELECTRICAL EQUIPMENT.

7. BOLD LINETYPE INDICATES NEW WORK.

8. CABLE LENGTHS SHOWN ARE ESTIMATES, TYP. FIELD VERIFY DISTANCES BEFORE INSTALLATION. DO NOT SPLICE NEW CABLE PULLS.

KEYNOTES

1. PROVIDE (N) EQUIPMENT AS INDICATED, IN (N) OR (E) ENCLOSURE AS INDICATED ON SWITCHBOARD AND PANELBOARD SCHEDULES ON SHEET E-B203-701.

2. PROVIDE (N) CABLE IN (N) OR (E) CONDUIT AS INDICATED.

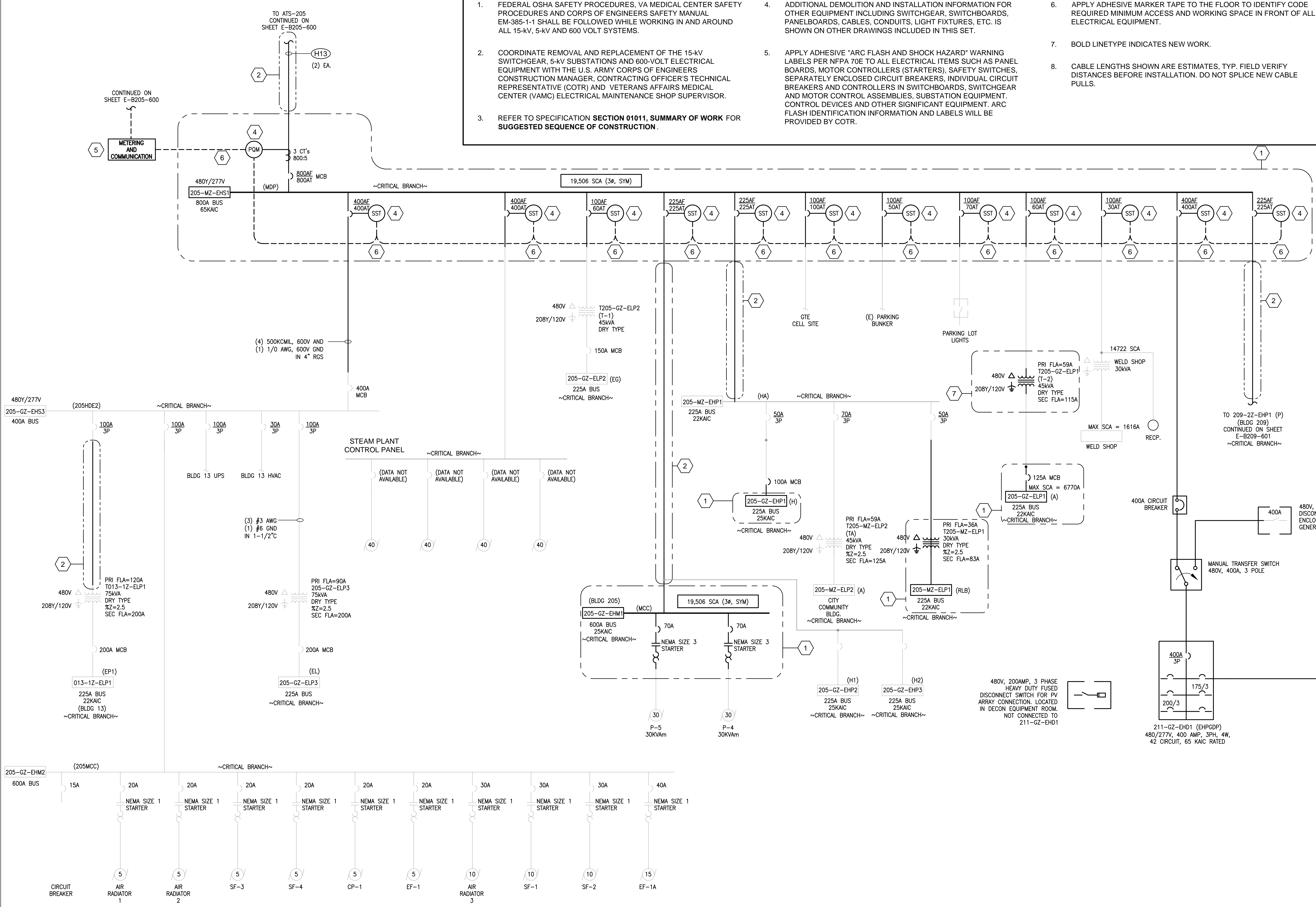
3. INTERCEPT AND EXTEND (E) FEEDER TO (N) MDP LOCATION.

4. PROVIDE METERING EQUIPMENT (CTS, SOLID STATE TRIP AND/OR POWER QUALITY TYPE) AND ALL REQUIRED APPURTENANCES FOR A FULLY OPERATIONAL SYSTEM, IN ACCORDANCE WITH SPECIFICATION SECTION 16430.

5. PROVIDE METERING AND COMMUNICATION CABINET, MINIMUM 24-INCH BY 24-INCH BY 8-INCH DEEP, NEMA 1 WITH HINGED FRONT COVER, INCLUDING METER EQUIPMENT COMPATIBLE NETWORK HUB AND NETWORK ADAPTER, TERMINAL BLOCKS, POWER SUPPLY, UPS, CONNECTORS, MOUNTING HARDWARE AND ALL APPURTENANCES FOR A FULLY OPERATIONAL SYSTEM.

6. PROVIDE POWER WIRING, INTERCONNECTION WIRING AND COMMUNICATIONS CABLE TO CONNECT THE METER AND MONITORING DEVICES TO THE NETWORK ADAPTER LOCATED IN THE METERING AND COMMUNICATIONS CABINET.

7. PROVIDE (N) 45KVA, 480-208Y/120V TRANSFORMER TO REPLACE (E) TRANSFORMER.



FOR FEEDER CIRCUIT CABLE AND CONDUIT SIZES, SEE CONDUIT AND CABLE SCHEDULE ON DRAWING E-B001-601, UNLESS OTHERWISE NOTED

CONSULTANTS:



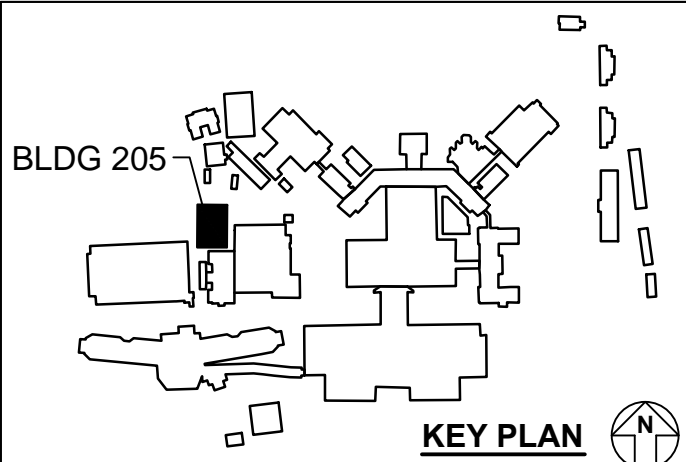
GHD Inc.  
2235 Mercury Way, Suite 150  
Santa Rosa, California 95407 USA  
T 1 707 523 1010 F 1 707 527 8679  
W www.ghd.com

GENERAL CONTRACTOR:



HELIX ELECTRIC  
CONSTRUCTORS • ENGINEERS

ARCHITECT:



Drawing Title  
SINGLE LINE DIAGRAM

Approved: Project Director  
Medical Center Director:  
LAWRENCE H. CARROLL  
Chief Engineer:  
JAMES PRIDLIDES

Project Title  
ELECTRICAL  
SYSTEM UPGRADES  
PROJECT 662-07-028ES

Location  
SFVA MEDICAL CENTER  
Date  
JANUARY 3, 2010  
Checked  
SMD  
Drawn  
BAT

Project Number  
11054-07-001  
Building Number  
205  
Drawing Number  
E-B205-601  
Dwg. 212 of 227

Office of  
Facilities  
Management



A

B

C

D

E

F

A

B

C

D

E

F

SWITCHBOARD & PANELBOARD REPLACEMENT SCHEDULE - BUILDING 205,209																
BLDG NO.	FLOOR	ROOM NO.	PANEL ID	PANEL ID	VOLTAGE	PHASE	WIRE	MOUNTING	(N) PANEL REQUIREMENTS				REFERENCE DRAWINGS			NOTES
									BUS AMPACITY	AIC RATING	NO. OF SPACES	MLO / MCB	SINGLE LINE DIAGRAM	FLOOR PLAN	DEMO PLAN	
205	GND FLOOR	CORR./G3-205	A	205GZ-ELP01	208	3	4	SURF	225	22K		125A MCB	E-B205-601	E-B205-101	ED-B205-601	
205	GND FLOOR	CORR./G3-205	H	205GZ-EHP01	480	3	4	SURF	225	25K		100A MCB	E-B205-601	E-B205-101	ED-B205-601	
205	GND FLOOR	CORR./G3-205	MCC	205GZ-EMH01	480	3	4	FREE	600	25K		MLO	E-B205-601	E-B205-101	ED-B205-601	(2) NEMA SIZE 3 STARTERS
205	MEZZANINE		MDP	205MZ-EHS01	480	3	4	SURF	800	42K		600A MCB	E-B205-601	E-B205-101	ED-B205-601	NEW LOCATION
209	GND FLOOR	ELEV. RM.	P	2092Z-EHP01	480	3	4	SURF	225	25K	42	225A MCB	E-B209-601	E-B209-101	ED-B209-601	

AS-BUILT RECORD DRAWINGS	8-29-14
Revisions:	Date

CONSULTANTS:

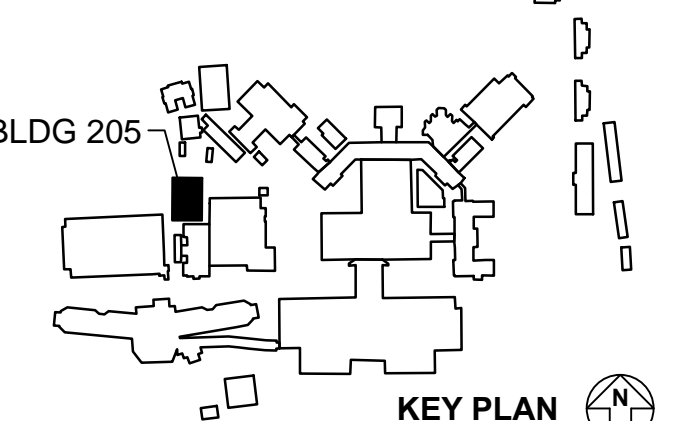


GHD Inc.  
2235 Mercury Way, Suite 150  
Santa Rosa, California 95407 USA  
T 1 707 523 1010 F 1 707 527 8679  
W www.ghd.com

GENERAL CONTRACTOR:



HELIX ELECTRIC  
CONSTRUCTORS • ENGINEERS



BLDG 205

KEY PLAN

ARCHITECT:

Drawing Title

SWITCHBOARD & PANELBOARD REPLACEMENT SCHEDULE

Approved: Project Director

Medical Center Director:  
LAWRENCE H. CARROLL  
Chief Engineer:  
JAMES PRIDLIDES

Project Title

ELECTRICAL SYSTEM UPGRADES PROJECT 662-07-028ES

Location

SFVA MEDICAL CENTER

Date

JANUARY 3, 2010

Checked

SMD

Drawn

CAR

Project Number

11054-07-001

Building Number

205 & 209

Drawing Number

E-B205-701

Dwg. 213 of 227

Office of Facilities Management

 Department of Veterans Affairs