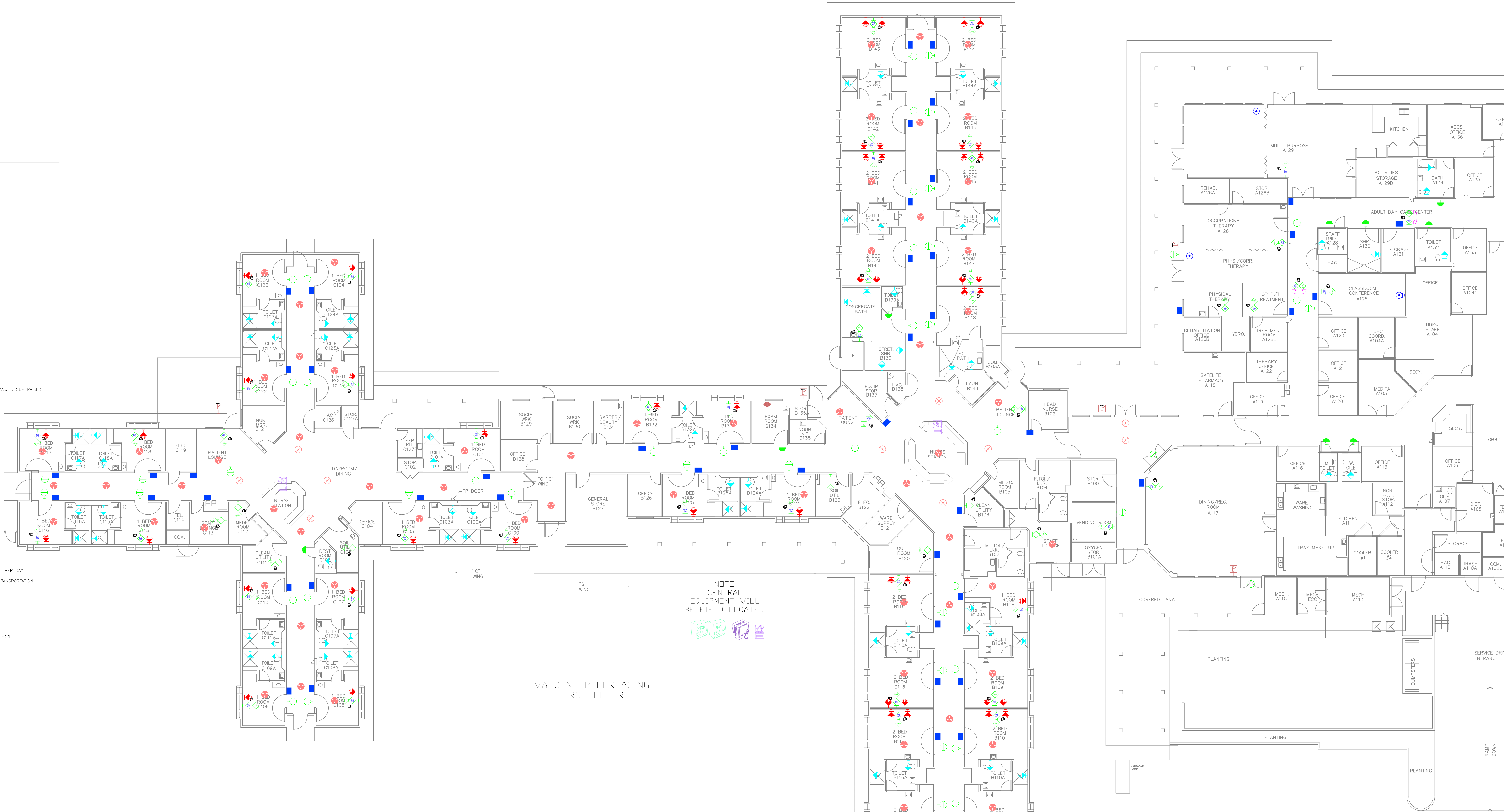


REV.	DATE	CHANGE DESCRIPTION	Made By:
△	7/22/2009	Revised per Mark Up 28347701	

Part #	QTY	DESCRIPTION
Legend		
COMUNK_SYSTEM		
P002613	1	LOADER CONSOLE BOX
P004612	2	AUDIO CONSOLE BOX
P003367	1	HP ML350 DVR TOWER TO RACK KIT
P2500409	2	COMUNK NCM CONSOLE
P2500410	2	MOUSE, COMUNK NCM MOUSE
P2505021	60	BLU, 95, 1-GANG, W/BED STATUS
P2506A24	9	DOVE LIGHT, SINGLE BULB
P2506A25	51	DOVE LIGHT, W/4 WHITE LENSES
P2507802	90	BADGE, STAFF LOCATOR, I-BADGE
P2511AC01C	1	CALL CORD 8FT
P2512AD0	10	ZONE LIGHT, CEILING MOUNTED
P2515B01	2	HANDSET AND HOOK SWITCH ASSY
P2516A01	1	EQUIPMENT RECEPTACLE
P2517B1702	1	MONITOR, 15" FLAT PANEL LCD BLACK
P2517C15	2	MONITOR, 15IN, TOUCHSCREEN, FLAT PANEL, ELO
P2518A04	2	MOUNTING BRACKET
P2518A05	1	MTG. SUPPORT ASSY, SERVER
P2519B19	2	SERIAL LINE CONVERTER, RS232/RS422
P2520B01	37	SWITCH, BATH SWITCH, W/CANCEL, SUPERVISED
P2520B02	36	SWITCH, BATH SWITCH, W/O CANCEL, SUPERVISED
P2520B03	5	SWITCH, STAFF EMERGENCY LEVER, SALMON, W/CANCEL, SUPERVISED
P2520B06	3	SWITCH, CODE BLUE SWITCH W/CANCEL
P2523A01	2	KEYBOARD, MM
P2523B02	2	KEYBOARD MOUSE, EXTENSION CABLE 6 FT.
P2523A0101	60	CABLE, ENTERTAINMENT CABLE, 18IN
P2540B02	70	R/LR, REMOTE LOCATOR RECEIVER
P2576CMA16	2	COMARK NCM CLIENT 3.X
P2577A10	1	HP DL380 NCM SERVER RACK MOUNT
P2594A01	53	AUDIO STATION WITH DISPLAY WITH CODE BLUE
P2594A05	8	AUDIO STATION WITH DISPLAY WITHOUT CODE BLUE
P2599A01	54	CONSOLIDATED ROOM BOARD, W/RELAYS
COMUNK_HARDWARE		
P2519A18	1	DCABLE DB9 FEM TO DB9 FEM
P2521A04	1	UPS HP 11500 G2 120WAC 6 OUTLET
P2521C01	2	UPS, APC BACK-UPS RS1500
COMUNK_TRAINING		
P2570A0004	3	ON-SITE CLINICAL STAFF TRAINING PER SPECIALIST PER DAY
P2570A000404	1	TRAINING, NCM, 1 PERSON, DOES NOT INCLUDE TRANSPORTATION
COMUNK_CERTIFICATION		
P2570A0005	60	CERTIFICATION/START-UP
COMUNK_INFRASTRUCTURE		
P2536A0412	31	COMM CABLE CAT 5E, AMP, SEAFOAM, 1000 FT SPOOL
P2537A02	33	CONNECTOR, RJ45, AMP, BAG OF 25
P2549A03	54	ENCLOSURE, ROOM BOX, FOR USE WITH RCB
COMUNK_NCM_SYSTEM_SOFTWARE		
P2582E0101	1	SW, NCM SERVER 3.4.0
P2583E01	2	SW, NCM CLIENT 3.4.0
P2584E0101	1	SW 3.4.LOC.RPT,STATUS
COMUNK_CENTRAL_EQUIPMENT		
BEL-AX126-15	1	CABLE, CROSSOVER 15FT RJ-45 M-M
BEL-F2N209B15-T	1	CABLE, SERIAL 15FT DB-9 M-F
CMBRCS	1	STRAIN RELIEF COMB
FXLDS-16	5	MPS DIGITAL STATION BOARD
FXSRV31	1	MPS SERVICES BOARD
MPS-BCHHR	1	MPS CABINET ASSEMBLY
MPS-SSB	1	MPS CPU BOARD
MPS-UPS	1	MPS BATTERY BACKUP
P2519A00	2	PDC, POWER DISTRIBUTION CABINET, W/GLASS COVER
P2519A02	2	PDC, BATTERY BACKUP ASSEMBLY FOR POWER DISTRIBUTION CABINET
P2519A06	2	POWER MONITOR BOARD ASSEMBLY, W/FACEPLATE
P2519A08	1	FACEPLATE, BLANK, RJ45 DIST. BOARD
P2519A10	1	FACEPLATE, BLANK, POWER SUPPLY
P2519A20	1	UNINTERRUPTIBLE POWER CABINET (UPC), W/GLASS COVER
P2519B09	5	POWER SUPPLY, FOR POWER DISTRIBUTION CABINET
P2519B12	5	BOARD, RJ45 ADAPTER BOARD ASSEMBLY
P2519C07	5	BOARD, RJ45 DISTRIBUTION BOARD ASSEMBLY, W/FACEPLATE
P2521A03	1	UPC, UPS, 350VA
P2522B02	1	8-PORT ETHERNET, 10/100 SWITCH, LINKSYS
COMUNK_SERVICES		
P2582D02	1	SW, LICENSE 3RD PARTY SERVER
P2583D02	2	SW, LICENSE 3RD PARTY CLIENT
COMUNK_PILLOW_SPEAKER		
P2510	60	PILLOW SPKR



Communication Notes:

- ALL CABLEING MUST BE AS SPECIFIED BY HILL-ROW
- ALL CABLEING TO BE FIELD TERMINATED BY INSTALLING CONTRACTOR.
- LOCATION OF ROUGH-IN FOR ALL BED INTERFACE UNITS MUST AVOID INTERFERENCE OR DAMAGE FROM PATIENT BED.
- ALL DEVICE LOCATIONS SHOWN ARE FOR ILLUSTRATION PURPOSES ONLY. ACTUAL LOCATIONS TO BE FIELD DETERMINED.
- HOME-RUNS FROM ROOM BOXES THAT CONTROLS HOME LIGHTS TO POWER DISTRIBUTION CABINET MUST NOT EXCEED 300 FT IN LENGTH.
- ALL RJ45 CONNECTORS MUST BE AMP PART#S-557315-4. CABLE MUST BE TERMINATED WITH AMP TERMINATION TOOL. PART#P-221452-1.
- ALL TERMINATION TOOLS, PUNCH SCANNERS, CABLE MAPPERS, AND CRIMPING TOOLS SUPPLIED BY INSTALLING CONTRACTOR.
- PILLOW SPEAKER PROVIDES A MOMENTARY CONTACT SWITCH FOR EACH LIGHTING RELAY. EACH SWITCH CONTAINS ON SET OF NORMALLY OPEN MOMENTARY DRY CONTACT. A COMMON AND ONE SWITCH LEO IS PROVIDED. LIGHTING RELAYS EMPLOYED BY INSTALLING CONTRACTOR MUST BE LOW VOLTAGE SOLID STATE LATCHING HUMBLE RELAYS WITH ONE SWITCH LEO EACH. POWER SUPPLIES REQUIRED TO OPERATE THESE RELAYS MUST BE PROVIDED BY INSTALLING CONTRACTOR.
- INSTALLING CONTRACTOR TO PULL TV/LIGHTING/ENTERTAINMENT CABLES TO BED INTERFACE UNIT.
- ALL GLASS WALKS, GLASS DOORS, AND INTERIOR WINDOWS MUST BE INDICATED TO ENSURE THE PROPER FUNCTIONALITY OF INFRARED SIGNALS.
- SMOKE ALARM INTERFACE NOT INCLUDED.
- AST INTERFACE NOT INCLUDED.
- PAGING INTERFACE NOT INCLUDED.
- AUDIO/VISUAL INTERFACE NOT INCLUDED.
- PBX INTERFACE NOT INCLUDED.
- BED STATUS INTERFACE NOT INCLUDED.
- MOHAWK SHALL PROVIDE DEDICATED PHONE LINE AT EACH SERVER MASTER STATION LOCATION.
- THE COMPOSER AND COMUNK LOCATING SYSTEMS ADVANCE TRANSFORMER CO. IMPROVED MARK V INTEGRATED ELECTRONIC BALLAST THIS BALLAST IS RECOMMENDED BECAUSE IT REDUCES THE POTENTIAL FOR INTERFERENCE BY OPERATING OUTSIDE OF THE FREQUENCY BAND OF MOST HARMFUL CONTROLS. THE ADVANCE MARK V BALLAST IS SPECIFIED TO OPERATE ABOVE 42 KHz.
- COMPATIBLE WITH AIA GUIDELINES. FINAL CUSTOMER SIGN-OFF INDICATES YOUR REVIEW AND APPROVAL THAT ALL STATE/LOCAL CODE REQUIREMENTS ARE MET.
- HOSPITAL SHALL PROVIDE CONNECTION TO EMERGENCY POWER AT EACH MASTER STATION.
- REFERENCE MANUAL MAN68688 FOR INSTALLATION GUIDELINES.

INFORMATION REQUIRED TO RELEASE	
1. TELEVISION MFG. _____ MODEL/SYSTEM NO. _____ DESIRED PILLOW SPEAKER MANUFACTURER _____ CHANNEL _____ MEDTEX IF NOT SPECIFIED, HILL-ROW WILL SELECT.	
2. HOME LIGHT TYPE: _____ WALL MOUNTED _____ CEILING MOUNTED	
3. BED INTERFACE UNIT TYPE: _____ 1-GANG _____ 2-GANG	
4. LOCATOR BADGE TYPE: _____ STAFF PENDANT _____ HORIZONTAL I.D. _____ VERTICAL I.D.	
5. STAFF CLOCK INTERFACE REQUIRED? _____ YES _____ NO	
6. RADIO INTERFACE REQUIRED? _____ YES _____ NO	
7. SMOKE ALARM INTERFACE? _____ YES _____ NO	
8. VERIFY DELIVERY DATE OF EQUIPMENT: _____ / _____ / _____	
9. VERIFY IF EARLY DELIVERY OF BACKPHONE EQUIPMENT _____ YES _____ NO	
10. DATE BACKPHONE IS REQUIRED: _____ / _____ / _____	
11. SPECIAL REQUIREMENTS: _____	
SHIPPING INFORMATION: _____	
SHOP DRAWING CUSTOMER APPROVAL SIGNATURE REQUIRED: _____ PH: _____	
DATE: _____ / _____ / _____	
POST INSTALLATION MARK-UP CUSTOMER APPROVAL SIGNATURE REQUIRED: _____ PH: _____	
DATE: _____ / _____ / _____	
POST INSTALLATION MARK-UP HILL-ROW REP. APPROVAL SIGNATURE REQUIRED: _____ PH: _____	
DATE: _____ / _____ / _____	

U.L. LISTED
OR
C.S.A. APPROVED

NOTICE:

Floor Identification:

Customer:

VA MED CTR HONOLULU
459 PATTERSON RD
HONOLULU, HI, 96819
UNITED STATES

Drawn By: _____

Checked By: _____

System Type: Nurse Communications Module

Date: 10/27/2008

Scale: 3/32" = 1'

Project Manager: _____

Sheet _____ of _____

Customer ID: 633160

Plan View

Quantity: 1

Job Number: 38347701

PRELIMINARY
DRAWING ONLY
7/22/2009
DO NOT USE FOR
CONSTRUCTION

Drawn By: _____
Checked By: _____