



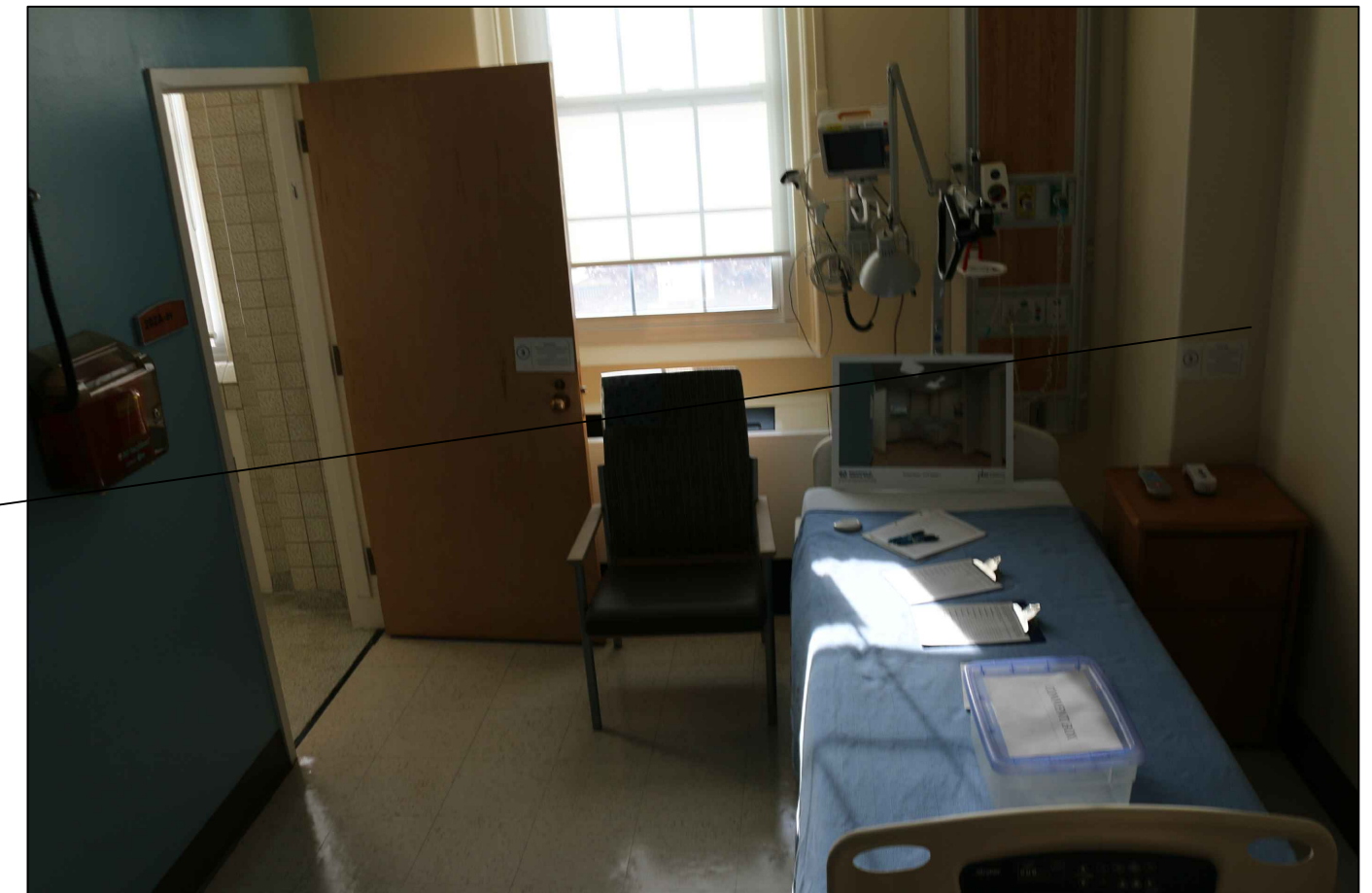
Accent Wall Color,
Random

Base Wall Color,
3 Remaining Walls

New Base Cove, BLK

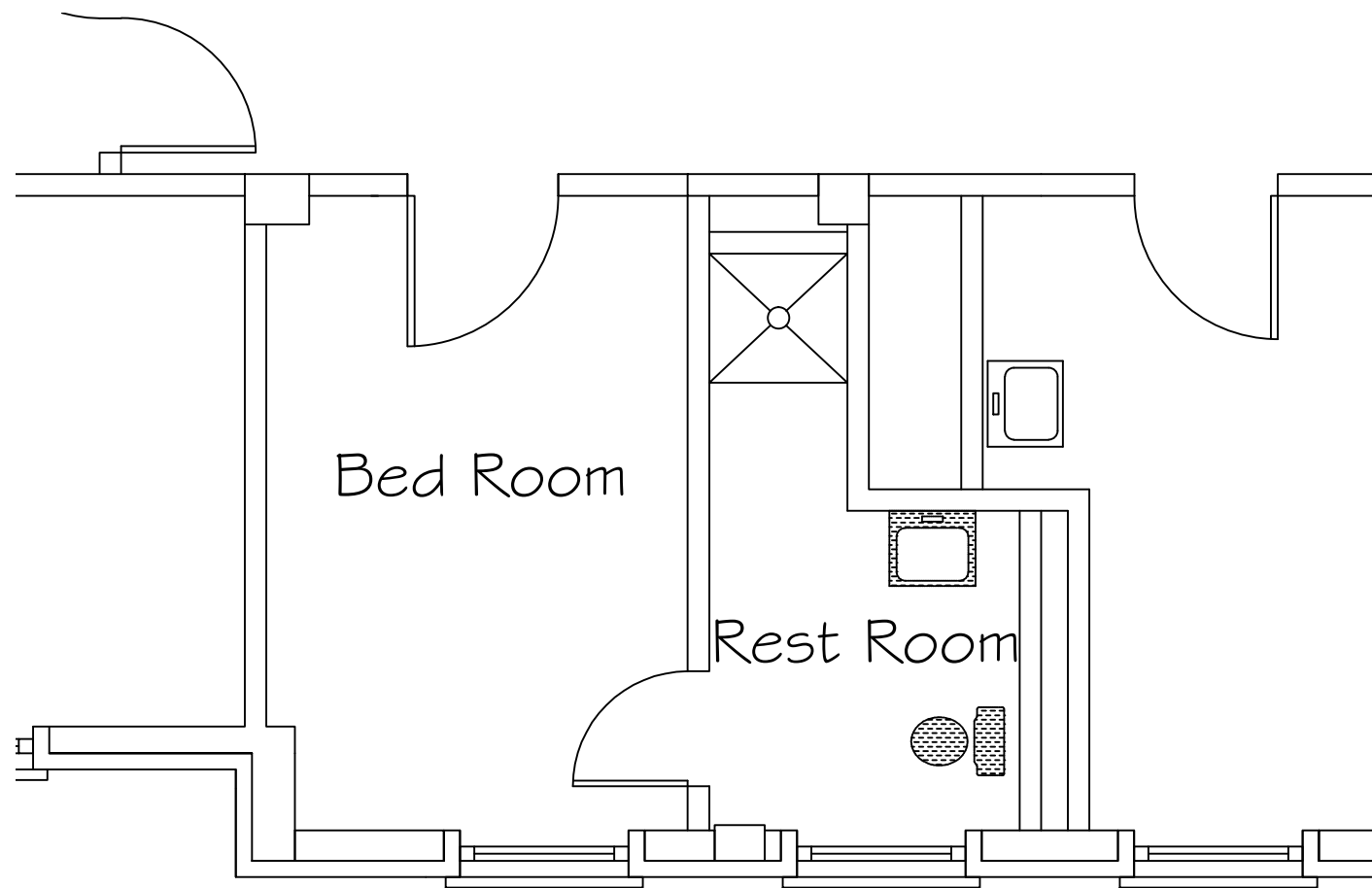
1 Typical Wall Finishes

NTS



2 Typical Wall Finishes

NTS





3 Typical Room Layout

NTS

General Notes:

1. Remove all non medical equipment wall accessories in patient bed room, and store for reuse. Mount per COR directions.
2. Remove all wall accessories in rest room, and store for reuse. Mount per COR directions.
3. Provide complete and usable systems for plumbing fixtures, lighting, acoustical ceilings, etc.
4. Before mounting anything, coordinate location with COR.
5. Existing fire protection sprinkler system will remain intact; cut openings in ceiling tile to fit snug next to sprinkler head, gap cannot exceed $\frac{1}{16}$ ".
6. Additional rough framing may be required to anchor new water closet and lavatory. Contractor responsible for all work associated with tying into existing water supplies, drains and vents.

		Approved: VHSO Associate Director	Project Title 2A 2B Renovations	Drawing Title TYPICAL ROOM PHOTOS	Project Number 564-17-130	Engineering Service  Department of Veterans Affairs		
		Approved: Service Chief	Measures one inch or not to scale! 	Location VA Health Care System of the Ozarks	Building Number 01 (One)			
Notes and/or Revisions: Date			Scale: NTS	Checked CGS	Drawn ENG		Date 5-12-2017	Drawing Number G4.00

CUSTOM VA FORM 08-6231B, MAR 2008