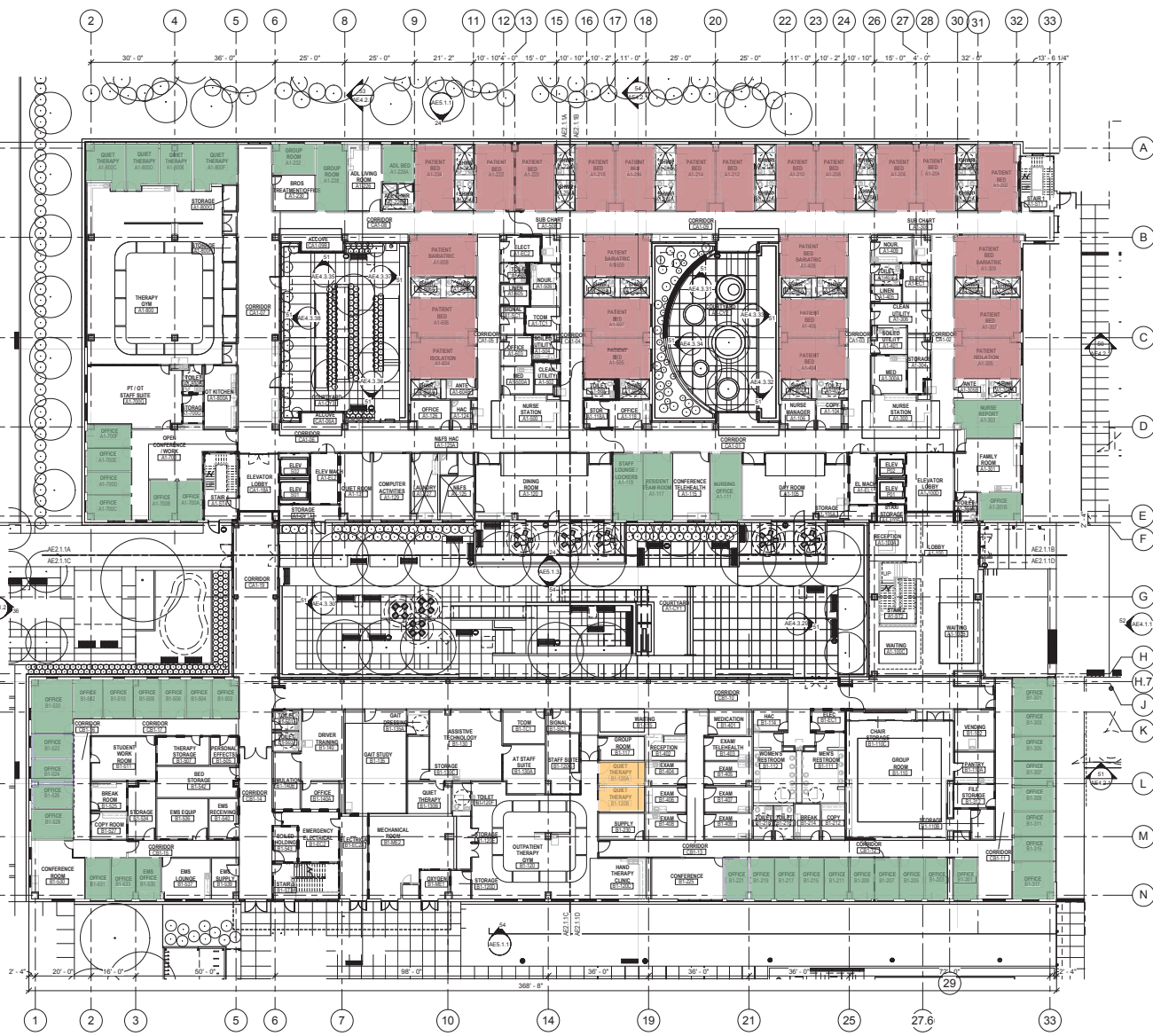


SHEET NOTES

- = ROOMS REQUIRE DUAL SHADE - MOTORIZED CONTROL (GROUP 1)
- = ROOMS REQUIRE DUAL SHADE - MANUAL CONTROL (GROUP 2)
- = ROOMS REQUIRE SINGLE BLACKOUT SHADE - MANUAL CONTROL (GROUP 3)



FULLY SPRINKLERED
CONSTRUCTION DOCUMENTS



54 FLOOR PLAN LEVEL 1
SCALE: 1/8" = 1'-0"

GRAPHIC SCALE: 1/16" = 1'-0"

CONSULTANTS:

Seals and Signatures



ARCHITECT/ENGINEERS:

SMITHGROUP
architecture engineering interiors planning
301 BATTERY STREET, 7TH FLOOR
SAN FRANCISCO, CA 94111
T 415.227.0100 F 415.908.0862
www.smithgroup.com

Member of:
The Design Partnership LLP
Architects + Planners
1412 VAN NESS AVE., 2ND FLOOR
SAN FRANCISCO, CA 94109
T 415.777.3727 F 415.777.3476
www.dpl.com

Drawing Title

OVERALL FLOOR PLAN LEVEL 1

Approved: Project Director

Melan Arak

Project Title
CENTERS FOR AMBULATORY CARE,
POLYTRAUMA AND BLIND REHABILITATION
Polytrauma and Blind Rehabilitation Center
Location
3801 Miranda Ave., Palo Alto CA
Date
Jan 17, 2014
Checked
JG
Drawn
NW
Diag. of

Project Number
640-424
Building Number
500
Drawing Number
AE2.1.1

Office of
Construction
and Facilities
Management

