

12620 - Spec Section

Summary of Chairs and Seating (B-, CH-, S-, ST-)

Spec Item No.	Uph. Code	Furniture Selection	Manufacturer	Quantity
B-01S	S	3-Seat Bench	Krug	2
B-01PP	PP	3-Seat Bench	Krug	8
B-02	n/a	Portable Locker Room Bench (60")	List Industries OR EQUAL	1
B-03	n/a	Bench between Lobby and Vestibule	Arcadia	2
CH-01	A	Desk Chair	Highmark	624
CH-02D	D	Hip Chair with Arms for Group Rooms	Highmark	6
CH-03B	B	Swivel Conference Chair with Upholstered Seat and Back	SitOnIt Seating	56
CH-03C	C	Swivel Conference Chair with Upholstered Seat and Back	SitOnIt Seating	10
CH-03D	D	Swivel Conference Chair with Upholstered Seat and Back	SitOnIt Seating	31
CH-04	W	Lounge Chair	Encore	2
CH-05B	B	Conference Chair with Arms, Upholstered Back and Seat, Stackable, No Casters	KI	211
CH-05C	C	Conference Chair with Arms, Upholstered Back and Seat, Stackable, No Casters	KI	50
CH-05D	D	Conference Chair with Arms, Upholstered Back and Seat, Stackable, No Casters	KI	97
CH-06B	B	Bariatric Chair with Arms for Group Rooms (42")	Highmark	10
CH-06C	C	Bariatric Chair with Arms for Group Rooms (42")	Highmark	5
CH-06D	D	Bariatric Chair with Arms for Group Rooms (42")	Highmark	4
CH-06E	E	Bariatric Chair with Arms for Group Rooms (42")	Highmark	1
CH-07F	F	Private Office and Exam Room Side Chair with Arms	Highmark	8
CH-07G	G	Private Office and Exam Room Side Chair with Arms	Highmark	38
CH-07K	K	Private Office and Exam Room Side Chair with Arms	Highmark	11
CH-07L	L	Private Office and Exam Room Side Chair with Arms	Highmark	3
CH-07M	M	Private Office and Exam Room Side Chair with Arms	Highmark	195
CH-07N	N	Private Office and Exam Room Side Chair with Arms	Highmark	164
CH-08	n/a	Dining Chair with Arms	KI	73
CH-09U	U	Lounge Chair with High Back	Teknion - Studio	4
CH-09X	X	Lounge Chair with High Back	Teknion - Studio	2
CH-09DD	DD	Lounge Chair with High Back	Teknion - Studio	2

12620 - Spec Section

Summary of Chairs and Seating (B-, CH-, S-, ST-)

Spec Item No.	Uph. Code	Furniture Selection	Manufacturer	Quantity
CH-10		NOT USED		
CH-11B	B	Bariatric Chair with Arms for Group Rooms (30")	Highmark	46
CH-11C	C	Bariatric Chair with Arms for Group Rooms (30")	Highmark	45
CH-11D	D	Bariatric Chair with Arms for Group Rooms (30")	Highmark	26
CH-11E	E	Bariatric Chair with Arms for Group Rooms (30")	Highmark	9
CH-11G	G	Bariatric Chair with Arms for Group Rooms (30")	Highmark	2
CH-11K	K	Bariatric Chair with Arms for Group Rooms (30")	Highmark	1
CH-11M	M	Bariatric Chair with Arms for Group Rooms (30")	Highmark	55
CH-11N	N	Bariatric Chair with Arms for Group Rooms (30")	Highmark	54
CH-12P	P	Conference Nesting Chair with Arms and Upholstered and Plastic Back, Casters	KI	83
CH-12Q	Q	Conference Nesting Chair with Arms and Upholstered and Plastic Back, Casters	KI	52
CH-12R	R	Conference Nesting Chair with Arms and Upholstered and Plastic Back, Casters	KI	24
CH-12S	S	Conference Nesting Chair with Arms and Upholstered and Plastic Back, Casters	KI	67
CH-13T	T	Lounge Chair with Tablet Arm	Arcadia	2
CH-13Z	Z	Lounge Chair with Tablet Arm	Arcadia	4
CH-13CC	CC	Lounge Chair with Tablet Arm	Arcadia	6
CH-13FF	FF	Lounge Chair with Tablet Arm	Arcadia	4
CH-14MM	MM	Waiting Area Unit, 1-Seat	Arcadia	4
CH-14NN	NN	Waiting Area Unit, 1-Seat	Arcadia	7
CH-15Y	Y	Waiting Area Unit, 2-Seat	Arcadia	4
CH-15KK	KK	Waiting Area Unit, 2-Seat	Arcadia	1
CH-15MM	MM	Waiting Area Unit, 2-Seat	Arcadia	2
CH-16Y	Y	Waiting Area Unit, 3-Seat	Arcadia	1
CH-16JJ	JJ	Waiting Area Unit, 3-Seat	Arcadia	8
CH-16KK	KK	Waiting Area Unit, 3-Seat	Arcadia	1
CH-16MM	MM	Waiting Area Unit, 3-Seat	Arcadia	4
CH-16OO	OO	Waiting Area Unit, 3-Seat	Arcadia	5

12620 - Spec Section

Summary of Chairs and Seating (B-, CH-, S-, ST-)

Spec Item No.	Uph. Code	Furniture Selection	Manufacturer	Quantity
CH-17Y	Y	Hip Style Chair	Arcadia	1
CH-17KK	KK	Hip Style Chair	Arcadia	4
CH-17MM	MM	Hip Style Chair	Arcadia	3
CH-17NN	NN	Hip Style Chair	Arcadia	2
CH-18	n/a	Patio Chair	West Coast Industries	38
CH-19N	N	Single Seat Chair with Arms	Carolina Business Furniture	1
CH-19II	II	Single Seat Chair with Arms	Carolina Business Furniture	15
CH-20	n/a	Café Table Stool, Armless	KI	70
CH-21M	M	Office Lounge Chair	Arcadia	5
CH-21HH	HH	Office Lounge Chair	Arcadia	1
CH-22	n/a	Swivel Task Chair with Arms	KI	2
CH-23	M	Exam Room Chair with Arms and Casters	Highmark	8
CH-24	M	Office Folding Chair with Upholstered Seat and Back	Weiland	20
CH-25	R	Exam Room Task Chair, Armless, with Casters and Upholstered Seat and Plastic Back	KI	2
CH-26Y	Y	Bariatric Lounge Chair	Arcadia	1
CH-26KK	KK	Bariatric Lounge Chair	Arcadia	2
CH-26MM	MM	Bariatric Lounge Chair	Arcadia	4
CH-26NN	NN	Bariatric Lounge Chair	Arcadia	2
CH-27		NOT USED		
CH-28		NOT USED		
CH-29	O	Lounge Chair	Carolina Business Furniture	8
S-01N	N	Two-Seat Sofa	Carolina Business Furniture	3
S-01II	II	Two-Seat Sofa	Carolina Business Furniture	5
S-01LL	LL	Two-Seat Sofa	Carolina Business Furniture	5
S-02	II	Three-Seat Sofa	Carolina Business Furniture	3
S-03	NN	Two-Seat Sofa with Arms	Encore	3

12620 - Spec Section

Summary of Chairs and Seating (B-, CH-, S-, ST-)

Spec Item No.	Uph. Code	Furniture Selection	Manufacturer	Quantity
S-04V	V	Three-Seat Sofa with Arms	Encore	1
S-04AA	AA	Three-Seat Sofa with Arms	Encore	2
S-05	J	Serpentine Lounge Seating with Tables	Carolina Business Furniture	1
ST-01H	H	Exam Room Stool	Humanscale	5
ST-01I	I	Exam Room Stool	Humanscale	6
ST-02	See Finish	Lab Stool with Back, Arms and Foot Ring	Cramer	17
ST-03	See Finish	Lab Stool with Back Footring, and without Arms	Cramer	52

12620 - Chairs/Seating

Spec Item No.	Furniture Selection	Uph. Code	Qty	Description
B-01PP	3-Seat Bench	PP	8	As manufactured by Krug #CAR5-3-0 Carlyle 3-Seat Standard Upholstered Bench Size: Overall - 81"w. x 26-1/2"d. x 17-1/2"h. Finish: Base - #90 Metallic Silver Performance Specification: The clean classic lines of the upholstered Carlyle Bench is offset by the gentle angle of the seat. Pre-consumer recycled content is 29.7%. Up to 68% of Carlyle Bench product is recyclable at the end of its useful life. GREENGUARD® certified. Level® certified.

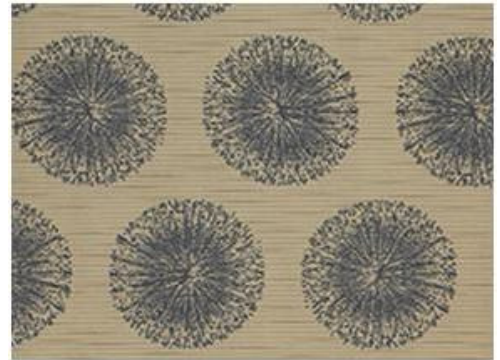


Locations:

1W24	2
2W24	2
1H90	4

12620 - Chairs/Seating

Spec Item No.	Furniture Selection	Uph. Code	Qty	Description
B-01S	3-Seat Bench	S	2	As manufactured by Krug #CAR5-3-0 Carlyle 3-Seat Standard Upholstered Bench Size: Overall - 81"w. x 26-1/2"d. x 17-1/2"h. Finish: Base - #90 Metallic Silver Performance Specification: The clean classic lines of the upholstered Carlyle Bench is offset by the gentle angle of the seat. Pre-consumer recycled content is 29.7%. Up to 68% of Carlyle Bench product is recyclable at the end of its useful life. GREENGUARD® certified. Level® certified.



Locations:

5H05 2

12620 - Chairs/Seating

Spec Item No.	Furniture Selection	Uph. Code	Qty	Description
B-02	Portable Locker Room Bench (60")	n/a	1	As manufactured by List Industries OR EQUAL
				Each to Consist of:
			(1)	Superior Series Benchtop Made from Laminated Hardwood Size: 60"w. x 9-1/2"d. x 1-1/4" thickness
			(1)	#4820 Superior Series Quantity of (2) Standard Aluminum Moveable Pedestals, Fabricated of Extruded Aluminum Providing (4) Anchoring Overall Size: 60"w. x 9-1/2"d. x 17-1/2"h.
				Finish: Bench - finished with one coat deep penetrating sealer and two coats of heavy body high impact hot hydraulically applied lacquer; Pedestals - #729 Parchment
				Assembly and Installation Notes: Using the pedestal as a template, locate centers. Drill 3/16" holes and attach with the screws provided.



Locations:

GW15A 1

12620 - Chairs/Seating

Spec Item No.	Furniture Selection	Uph. Code	Qty	Description
B-03	Bench between Lobby and Vestibule	n/a	2	<p>As manufactured by Arcadia #8273-NS10 Livia Three-Seat Scalloped Bench in Maple for Indoor Use with Non-skid Indoor Glide for Hard Surfaces</p> <p>Size: Overall - 72"w. x 20"d. x 17"h.</p> <p>Finish: Maple Wood - #21 Caramel Maple; Frame - #90 Metallic Silver</p> <p>Performance Specification: Spacers will match metal frame finish as standard. Tamper-resistant floor mount hardware available. Maximum weight capacity of 750 lbs. for 3-seat bench. Three-Seat bench has 3 legs. Design features an alluring side profile that may seem unassuming until its impressive visual effect is realized.</p>



Locations:

1st Floor Entry Vestibule 2
(no # on plans)

12620 - Chairs/Seating

Spec Item No.	Furniture Selection	Uph. Code	Qty	Description
CH-01	Desk Chair	A	624	<p>As manufactured by Highmark #3615E-R3-A65-W24-SS-L6-B17-BF Genus High Back Task Chair, Tailored Seat, Elomaster Back, Body Balance Control, Height and Width Adjustable Arms with Lockable 3D Pads, Seat Slider, Lumbar Support, Low Profile Fiberglass Reinforced Nylon Base, No Headrest, Hard Wheel Casters, Fully Assembled</p> <p>Size: Overall - 27-1/2"w. x 27-1/2"d. x 39-1/4 - 43-1/5"h.; 25- 1/4"s.w., 16-20"s.h.; 19-1/4" back width; 23-1/4" back height; 2- 1/4" glide</p> <p>Finish: Frame - #BF Black; Elomaster Back - #EPI Pitch; Base - #B17 Standard Nylon</p>

Performance Specification: Elomaster back of chair CAN NOT be substituted for mesh of any kind. Up to 300 lbs. capacity. Chair weight 49.8 lbs. with arms. Body Balance is the next generation of ergonomic office seating using weight sensing technology. Body Balance offers an intuitive, responsive seating experience. The chair adjusts to your every move and stops when you stop. A simple dual-function lever that adjusts seat height and allows the user to control the recline settings. Automatic tension adjustment ensures optimum back support during all stages of recline. Body Balance ensures perfect balance for every user during recline.



Seat:



Locations:

1E29	1	2W43	1	4E68	1
1E31	1	2W44	1	4E69	1
1E41	1	2W45	1	4E71	1
1E43	1	2W47	1	4E73	1
1E45	1	2W49	1	4E80	24

CH-01 Desk Chair (cont.)

12620 - Chairs/Seating

CH-01 Desk Chair (cont.)

Locations (cont.):

1E47	1	2W50	1	4E80A	1
1E48	1	2W51	1	4W29	1
1E49	1	2W52	1	4W31	1
1E50	1	2W53	1	4W35	1
1E51	1	2W54	1	4W36	1
1E53	1	2W55	1	4W37	1
1E55	1	2W56	1	4W38	1
1E56	1	2W57	1	4W39	1
1E57	1	2W58	1	4W40	1
1E58	1	2W59	1	4W43	1
1E59	1	2W61	1	4W45	1
1E61	1	2W63	1	4W49	1
1E62	1	2W65	1	4W50	1
1E63	1	2W67	1	4W51	1
1E64	1	2W69	1	4W52	1
1E65	1	2W80	1	4W53	1
1E66	2	2W82	1	4W54	1
1E67	1	2W84	1	4W55	1
1E68	2	2W86	1	4W56	1
1E69	1	2W90	1	4W57	1
1E70	2	2W92	1	4W58	1
1E71	2	3E08	1	4W59	1
1E75	2	3E25	1	4W61	1
1E77	2	3E27	1	4W63	1
1W07	11	3E34	1	4W65	1
1W07A	2	3E37	1	4W67	1
1W15	1	3E39	1	4W69	1
1W21	1	3E41	1	4W85	29
1W25	2	3E43	1	5E08	2
1W25A	1	3E45	1	5E10	1
1W30	1	3E47	1	5E12	1
1W34	1	3E49	1	5E16	1
1W35	1	3E51	1	5E21	1
1W36	1	3E53	1	5E22	1
1W37	1	3E55	1	5E23	1
1W38	1	3E56	6	5E24	1
1W39	1	3E57	1	5E25	1
1W40	1	3E59	1	5E27	1
1W41	1	3E61	1	5E30	2
1W42	1	3E63	1	5E34	1

CH-01 Desk Chair (cont.)

12620 - Chairs/Seating

CH-01 Desk Chair (cont.)

Locations (cont.):

1W43	1	3E64	6	5E36	4
1W45	1	3E65	1	5E37	1
1W47	1	3E67	1	5E41	1
1W49	1	3E69	1	5E43	2
1W50	1	3E71	1	5W10	16
1W51	1	3E73	1	5W13	1
1W52	3	3E80	4	5W25	8
1W53	1	3E80A	1	5W29	2
1W54	1	3E80B	1	5W30	2
1W55	1	3E80C	1	5W31	2
1W56	1	3E90	4	5W33	2
1W57	1	3E90A	1	5W34	2
1W58	1	3E90B	1	5W35	2
1W59	1	3E90C	1	5W36	2
1W61	1	3W09A	2	5W37	2
1W63	1	3W09	2	5W39	2
1W65	1	3W10	1	5W40	2
2E18	3	3W21	2	5W41	2
2E19	1	3W21A	2	5W42	2
2E20	1	3W25	2	5W43	1
2E22	1	3W25A	2	5W44	2
2E23	1	3W31	1	5W45	1
2E25	1	3W33	1	5W47	2
2E27	1	3W35	1	5W49	1
2E28	1	3W37	1	5W51	1
2E29	1	3W39	1	5W52	2
2E37	1	3W41	1	5W53	1
2E39	1	3W42	1	5W54	1
2E41	1	3W43	1	5W55	1
2E43	1	3W45	1	5W56	1
2E45	1	3W47	1	5W57	1
2E47	1	3W49	1	5W58	1
2E48	2	3W50	2	5W59	2
2E49	1	3W51	1	5W61	1
2E50	2	3W52	1	5W63	2
2E51	1	3W53	1	5W82	1
2E52	1	3W54	1	5W84	3
2E53	1	3W55	1	5W85	10
2E54	1	3W56	1	5W87	9
2E55	1	3W57	1	GE27	1

CH-01 Desk Chair (cont.)

12620 - Chairs/Seating

CH-01 Desk Chair (cont.)

Locations (cont.):

2E56	1	3W59	1	GW03B	4
2E57	1	3W60	3	GW10	10
2E58	1	3W61	1	GW11	2
2E59	1	3W63	1	GW15	5
2E61	1	3W65	1	GW29	3
2E63	1	3W67	1	GW33	3
2E64	1	3W69	1	GW35	1
2E65	1	3W85	1	GW36	3
2E66	1	3W85A	1	GW37	1
2E67	1	3W85B	1	GW38	3
2E68	1	4E20	28	GW39	2
2E69	1	4E37	1	GW40	3
2E70	1	4E39	1	GW41	1
2E71	1	4E41	1	GW42	3
2E75	1	4E43	1	GW43	1
2E76	1	4E45	1	GW44	3
2E78	1	4E47	1	GW45	1
2W07	18	4E48	1	GW47	1
2W07A	2	4E49	1	GW48	3
2W09	2	4E50	1	GW49	1
2W14	2	4E51	1	GW51	3
2W29	1	4E53	1	GW52	10
2W30	1	4E54	1	GW53	1
2W31	1	4E55	1	GW55	2
2W32	1	4E56	1	GW57	2
2W33	1	4E57	1	GW59	1
2W34	1	4E58	1	GW61	1
2W35	1	4E59	1	GW63	1
2W37	1	4E61	1	GW80	1
2W38	1	4E63	1	GW85	4
2W39	1	4E64	1	GW87	2
2W40	1	4E65	1	GW89	6
2W41	1	4E66	1	GW90	1
2W42	1	4E67	1	GW67	1

12620 - Chairs/Seating

Spec Item No.	Furniture Selection	Uph. Code	Qty	Description
CH-02D	Hip Chair with Arms for Group Rooms	D	6	<p>As manufactured by Highmark #2419-SF-BA-W37 Lynx Easy Access Chair with Arms and Armrest, Footrest, with Floor Saver Swivel Glides For Carpeted or Tile Floor Surfaces</p> <p>Size: Overall - 24"w. x 25"d. x 39"h.; 16-1/2"s.w., 18-1/2"s.d., 24"s.h., 17"b.w., 14-1/2"b.h. Swivel - 3/4"h., x 1-1/4"dia. Base with 3/8" stem</p> <p>Finish: Frame - Silver; Arm - Standard Black</p> <p>Performance Specification: Reinforced welded steel structure made out of 1" Diameter 13G steel tube. Wall saver frame. Lifetime warranty on parts. Up to 350 lbs. weight rating. Ergonomically curved back and contoured waterfall seat. Items CH- 02, CH-06, CH-07 and CH-11 must all be manufactured in matching style and like finishes. Upholstered back and seat with clean through design.</p>



Back:



Seat:



Locations:

1W80	2
1W84	2
1W88	2

12620 - Chairs/Seating

Spec Item No.	Furniture Selection	Uph. Code	Qty	Description
CH-03B	Swivel Conference Chair with Upholstered Seat and Back	B	56	<p>As manufactured by SitOnIt Seating #2723 B3 T FC1 A140 B17 C16F S0 FG8 AC Amplify High Back Task Chair (Upholstered Back with Silica Leather Seat) with Adjustable Lumber, Swivel/Tilt, Fixed Polyurethane Arms, Standard Cylinder Height, and #C16 Carpet Casters, Fully Assembled in Carton, No Seat Depth Adjustment</p> <p>Size: Overall - 27-3/4"w. x 24-1/2"d. x 42"h. 19-1/4"s.w.; 18-1/4"s.d.; 16-1/2 - 22-1/2"s.h.</p> <p>Finish: Frame, Arms & Base - Black Casters - #C16 Black</p> <p>Performance Specification: Waterfall seat. 300 lb. weight capacity. Lifetime Warranty; 12-Years for 24/7 use. Waterfall seat. Back is upholstered, not mesh. Arrives fully assembled in carton.</p>



Back:



Seat:



Locations:

1E04	12	3W03	12
1E20	10	3W05	12
1E30A	10		

12620 - Chairs/Seating

Spec Item No.	Furniture Selection	Uph. Code	Qty	Description
CH-03C	Swivel Conference Chair with Upholstered Seat and Back	C	10	<p>As manufactured by SitOnIt Seating #2723 B3 T FC1 A140 B17 C16F S0 FG8 AC Amplify High Back Task Chair (Upholstered Back with Silica Leather Seat) with Adjustable Lumber, Swivel/Tilt, Fixed Polyurethane Arms, Standard Cylinder Height, and #C16 Carpet Casters, Fully Assembled in Carton, No Seat Depth Adjustment</p> <p>Size: Overall - 27-3/4"w. x 24-1/2"d. x 42"h. 19-1/4"s.w.; 18-1/4"s.d.; 16-1/2 - 22-1/2"s.h.</p> <p>Finish: Frame, Arms & Base - Black Casters - #C16 Black</p> <p>Performance Specification: Waterfall seat. 300 lb. weight capacity. Lifetime Warranty; 12-Years for 24/7 use. Waterfall seat. Back is upholstered, not mesh. Arrives fully assembled in carton.</p>



Back:



Seat:



Locations:

5W15 10

12620 - Chairs/Seating

Spec Item No.	Furniture Selection	Uph. Code	Qty	Description
CH-03D	Swivel Conference Chair with Upholstered Seat and Back	D	31	<p>As manufactured by SitOnIt Seating #2723 B3 T FC1 A140 B17 C16F S0 FG8 AC Amplify High Back Task Chair (Upholstered Back with Silica Leather Seat) with Adjustable Lumber, Swivel/Tilt, Fixed Polyurethane Arms, Standard Cylinder Height, and #C16 Carpet Casters, Fully Assembled in Carton, No Seat Depth Adjustment</p> <p>Size: Overall - 27-3/4"w. x 24-1/2"d. x 42"h. 19-1/4"s.w.; 18-1/4"s.d.; 16-1/2 - 22-1/2"s.h.</p> <p>Finish: Frame, Arms & Base - Black Casters - #C16 Black</p> <p>Performance Specification: Waterfall seat. 300 lb. weight capacity. Lifetime Warranty; 12-Years for 24/7 use. Waterfall seat. Back is upholstered, not mesh. Arrives fully assembled in carton.</p>



Back:



Seat:

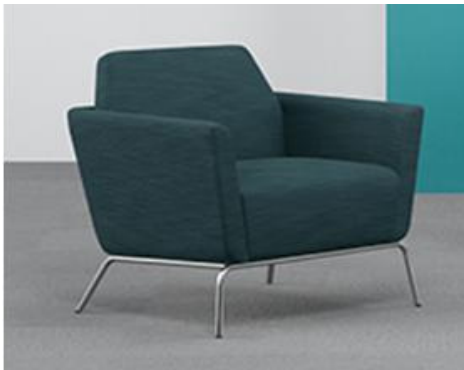


Locations:

4W10	10
4W20	10
4W34	6
4W43	5

12620 - Chairs/Seating

Spec Item No.	Furniture Selection	Uph. Code	Qty	Description
CH-04	Lounge Chair	W	2	<p>As manufactured by Encore #6270-90-VCT1-CL4 Clipse Single Lounge Chair with Platform Base and (4) Fixed Legs, with Modified Seat to Provide Clean Out, Fully Upholstered, on Glides</p> <p>Size: Overall - 32"w. x 29"d. x 29-1/2"h.; 17-1/2"s.h.; Seat - 24"w. x 20"d.; Back - 22"w. x 15"h.</p> <p>Finish: Legs - #90 Metallic Silver</p> <p>Performance Specification: 350 lb. weight capacity. VCT tile glides are for hard surface flooring. SCS Outdoor Advantage Bold Certified.</p>



Back:



Seat:



Locations:

4H10 2

12620 - Chairs/Seating

Spec Item No.	Furniture Selection	Uph. Code	Qty	Description
CH-05B	Conference Chair with Arms, Upholstered Back and Seat, Stackable, No Casters	B	211	As manufactured by KI #DN1311-NFR-PFN-SX-GSL Doni Four-Leg Stack Chair with Arms, Upholstered Seat and Back, Polypropylene Solid Color Shell, Steel Glides and Floor Contact in Neutral Nylon Color, Stacking Size: Overall - 25-3/8"w. x 21-1/2"d. x 33-3/4"h.; 18"s.h.; Seat - 19-1/4"w. x 18-3/4"d.; 26-1/2"a.h. Finish: Frame - #SX Starlight Silver Metallic Arms & Solid Color Shell - #PFN Flannel

Performance Specification: The seat and backrest are joined by a pair of hidden articulation mechanisms, each consisting of a 14-gauge steel housing, twin 7-gauge levers and steel coil springs. While maintaining a one-piece shell appearance, this mechanism allows the backrest to recline up to 17 degrees of motion. A seat ring is made of 1/2" diameter steel wire and attached to the seat with 14-gauge steel brackets. The bottom ends of the 4-leg chair tubes are formed to be vertical where they meet the floor. The leg tubes are capped with polypropylene end caps matching the leg color. Legs are made from 3/4" diameter steel tubing. All joints are welded and the frames are finished in baked-on electrostatically-applied 30-degree gloss epoxy powder-coat paint. Tested to 300 lb. weight limit. Stacks 12-high on dolly, 6-high on floor. When equipped with arms, the support structure is a continuation of the rear leg. The armrests are injection-molded, glass-reinforced polypropylene. The steel frame tube is inserted into a socket molded into the armrest and secured with a screw. The floor contact surface on the glide is neutral color nylon.



Back:



Seat:



Locations:

1E04	7	2E80	30
1E19	60	2E86	10

CH-05B Conference Chair with Arms, Upholstered Back and Seat, Stackable, No Casters (cont.)

12620 - Chairs/Seating

CH-05B Conference Chair with Arms, Upholstered Back and Seat, Stackable, No Casters (cont.)

Locations (cont.):

1E20	17	2E90	20
1E30A	5	2W10	10
1W10	19	3W03	7
1W20	14	3W05	7
2E10	5		

12620 - Chairs/Seating

Spec Item No.	Furniture Selection	Uph. Code	Qty	Description
CH-05C	Conference Chair with Arms, Upholstered Back and Seat, Stackable, No Casters	C	50	<p>As manufactured by KI #DN1311-NFR-PFN-SX-GSL Doni Four-Leg Stack Chair with Arms, Upholstered Seat and Back, Polypropylene Solid Color Shell, Steel Glides and Floor Contact in Neutral Nylon Color, Stacking</p> <p>Size: Overall - 25-3/8"w. x 21-1/2"d. x 33-3/4"h.; 18"s.h.; Seat - 19-1/4"w. x 18-3/4"d.; 26-1/2"a.h.</p> <p>Finish: Frame - #SX Starlight Silver Metallic Arms & Solid Color Shell - #PFN Flannel</p>

Performance Specification: The seat and backrest are joined by a pair of hidden articulation mechanisms, each consisting of a 14-gauge steel housing, twin 7-gauge levers and steel coil springs. While maintaining a one-piece shell appearance, this mechanism allows the backrest to recline up to 17 degrees of motion. A seat ring is made of 1/2" diameter steel wire and attached to the seat with 14-gauge steel brackets. The bottom ends of the 4-leg chair tubes are formed to be vertical where they meet the floor. The leg tubes are capped with polypropylene end caps matching the leg color. Legs are made from 3/4" diameter steel tubing. All joints are welded and the frames are finished in baked-on electrostatically-applied 30-degree gloss epoxy powder-coat paint. Tested to 300 lb. weight limit. Stacks 12-high on dolly, 6-high on floor. When equipped with arms, the support structure is a continuation of the rear leg. The armrests are injection-molded, glass-reinforced polypropylene. The steel frame tube is inserted into a socket molded into the armrest and secured with a screw. The floor contact surface on the glide is neutral color nylon.



Back:



Seat:



Locations:

2W15	10	2W21	10
2W17	10	2W25	10
2W19	10		

12620 - Chairs/Seating

Spec Item No.	Furniture Selection	Uph. Code	Qty	Description
CH-05D	Conference Chair with Arms, Upholstered Back and Seat, Stackable, No Casters	D	97	<p>As manufactured by KI #DN1311-NFR-PFN-SX-GSL Doni Four-Leg Stack Chair with Arms, Upholstered Seat and Back, Polypropylene Solid Color Shell, Steel Glides and Floor Contact in Neutral Nylon Color, Stacking</p> <p>Size: Overall - 25-3/8"w. x 21-1/2"d. x 33-3/4"h.; 18"s.h.; Seat - 19-1/4"w. x 18-3/4"d.; 26-1/2"a.h.</p> <p>Finish: Frame - #SX Starlight Silver Metallic Arms & Solid Color Shell - #PFN Flannel</p>

Performance Specification: The seat and backrest are joined by a pair of hidden articulation mechanisms, each consisting of a 14-gauge steel housing, twin 7-gauge levers and steel coil springs. While maintaining a one-piece shell appearance, this mechanism allows the backrest to recline up to 17 degrees of motion. A seat ring is made of 1/2" diameter steel wire and attached to the seat with 14-gauge steel brackets. The bottom ends of the 4-leg chair tubes are formed to be vertical where they meet the floor. The leg tubes are capped with polypropylene end caps matching the leg color. Legs are made from 3/4" diameter steel tubing. All joints are welded and the frames are finished in baked-on electrostatically-applied 30-degree gloss epoxy powder-coat paint. Tested to 300 lb. weight limit. Stacks 12-high on dolly, 6-high on floor. When equipped with arms, the support structure is a continuation of the rear leg. The armrests are injection-molded, glass-reinforced polypropylene. The steel frame tube is inserted into a socket molded into the armrest and secured with a screw. The floor contact surface on the glide is neutral color nylon.



Back:



Seat:



Locations:

1W80	7	2W89	10
1W84	7	4W10	6

CH-05D Conference Chair with Arms, Upholstered Back and Seat, Stackable, No Casters (cont.)

12620 - Chairs/Seating

CH-05D Conference Chair with Arms, Upholstered Back and Seat, Stackable, No Casters (cont.)

Locations (cont.):

1W85	15	4W20	6
1W88	13	GW78	1
1W89	20	GW84	1
2W87	10	GW86	1

12620 - Chairs/Seating

Spec Item No.	Furniture Selection	Uph. Code	Qty	Description
CH-06B	Bariatric Chair with Arms for Group Rooms (42")	B	10	As manufactured by Highmark #2449-SF-BP-W37 Lynx 42" Bariatric Chair with Fixed Arms with Armrest, and Floor Saver Swivel Glides For Carpeted or Tile Floor Surfaces Size: Overall - 46-1/2"w. x 27.75"d. x 33"h.; 42-1/2"s.w., 18-3/4"s.d., 18"s.h., 42"b.w., 14-3/4"b.h. Swivel - 3/4"h., x 1-1/4"dia. Base with 3/8" stem Finish: Frame - Silver; Armrest - Standard Black

Performance Specification: Wall-Saver frame. Rated to 1,000 lbs.
Backed by Highmark's Lifetime warranty. Comes packed (3) chairs
to a box. Reinforced welded steel structure made out of 1"
Diameter 13G steel tube. Ergonomically curved back and
contoured waterfall seat. Items CH-02, CH-06, CH-07 and CH-11
must all be manufactured in matching style and like finishes.
Upholstered back and seat with clean through design.



Back:



Seat:



Locations:

1E20	1	2E10	1
1E80	1	2E80	1
1E90	1	2E86	1
1W10	1	2E90	1
1W20	1	2W10	1

12620 - Chairs/Seating

Spec Item No.	Furniture Selection	Uph. Code	Qty	Description
CH-06C	Bariatric Chair with Arms for Group Rooms (42")	C	5	As manufactured by Highmark #2449-SF-BP-W37 Lynx 42" Bariatric Chair with Fixed Arms with Armrest, and Floor Saver Swivel Glides For Carpeted or Tile Floor Surfaces Size: Overall - 46-1/2"w. x 27.75"d. x 33"h.; 42-1/2"s.w., 18-3/4"s.d., 18"s.h., 42"b.w., 14-3/4"b.h. Swivel - 3/4"h., x 1-1/4"dia. Base with 3/8" stem Finish: Frame - Silver; Armrest - Standard Black

Performance Specification: Wall-Saver frame. Rated to 1,000 lbs.
Backed by Highmark's Lifetime warranty. Comes packed (3) chairs
to a box. Reinforced welded steel structure made out of 1"
Diameter 13G steel tube. Ergonomically curved back and
contoured waterfall seat. Items CH-02, CH-06, CH-07 and CH-11
must all be manufactured in matching style and like finishes.
Upholstered back and seat with clean through design.



Back:



Seat:



Locations:

2W15	1	2W21	1
2W17	1	2W25	1
2W19	1		

12620 - Chairs/Seating

Spec Item No.	Furniture Selection	Uph. Code	Qty	Description
CH-06D	Bariatric Chair with Arms for Group Rooms (42")	D	4	As manufactured by Highmark #2449-SF-BP-W37 Lynx 42" Bariatric Chair with Fixed Arms with Armrest, and Floor Saver Swivel Glides For Carpeted or Tile Floor Surfaces Size: Overall - 46-1/2"w. x 27.75"d. x 33"h.; 42-1/2"s.w., 18-3/4"s.d., 18"s.h., 42"b.w., 14-3/4"b.h. Swivel - 3/4"h., x 1-1/4"dia. Base with 3/8" stem Finish: Frame - Silver; Armrest - Standard Black

Performance Specification: Wall-Saver frame. Rated to 1,000 lbs. Backed by Highmark's Lifetime warranty. Comes packed (3) chairs to a box. Reinforced welded steel structure made out of 1" Diameter 13G steel tube. Ergonomically curved back and contoured waterfall seat. Items CH-02, CH-06, CH-07 and CH-11 must all be manufactured in matching style and like finishes. Upholstered back and seat with clean through design.



Back:



Seat:



Locations:

1W80	1	1W85	1
1W84	1	1W88	1

12620 - Chairs/Seating

Spec Item No.	Furniture Selection	Uph. Code	Qty	Description
CH-06E	Bariatric Chair with Arms for Group Rooms (42")	E	1	<p>As manufactured by Highmark #2449-SF-BP-W37 Lynx 42" Bariatric Chair with Fixed Arms with Armrest, and Floor Saver Swivel Glides For Carpeted or Tile Floor Surfaces</p> <p>Size: Overall - 46-1/2"w. x 27.75"d. x 33"h.; 42-1/2"s.w., 18-3/4"s.d., 18"s.h., 42"b.w., 14-3/4"b.h. Swivel - 3/4"h., x 1-1/4"dia. Base with 3/8" stem</p> <p>Finish: Frame - Silver; Armrest - Standard Black</p> <p>Performance Specification: Wall-Saver frame. Rated to 1,000 lbs. Backed by Highmark's Lifetime warranty. Comes packed (3) chairs to a box. Reinforced welded steel structure made out of 1" Diameter 13G steel tube. Ergonomically curved back and contoured waterfall seat. Items CH-02, CH-06, CH-07 and CH-11 must all be manufactured in matching style and like finishes. Upholstered back and seat with clean through design.</p>



Back:



Seat:



Locations:

2E30 1

12620 - Chairs/Seating

Spec Item No.	Furniture Selection	Uph. Code	Qty	Description
CH-07F	Private Office and Exam Room Side Chair with Arms	F	8	<p>As manufactured by Highmark #2409-SF-BA-W37 Lynx Heavy Duty Guest Chair with Fixed Black Arms, Upholstered Back and Seat, with Floor Saver Swivel Glides For Carpeted or Tile Floor Surfaces</p> <p>Size: Overall - 24"w. x 24"d. x 33"h.; 18"s.h., 18-1/4"s.d., 16-1/2"s.w., 17"b.w., 14-1/2"b.h.; Glides - 3/4"h. x 1-1/4"dia. with 3/8" Stem</p> <p>Finish: Frame - Silver; Arm - Standard Black; Glides - Silver/White</p> <p>Performance Specification: Wall-Saver frame. Reinforced welded steel structure made out of 1" Diameter 13G steel tube. Rated to 350 lbs. Backed by Highmark's Lifetime warranty. Stacks (4) on floor. Stacks (6) on dolly. Comes packed (3) chairs to a box. Ergonomically curved back and contoured waterfall seat. Items CH- 02, CH-06, CH-07 and CH-11 must all be manufactured in matching style and like finishes. Upholstered back and seat with clean through design.</p>



Back:



Seat:



Locations:

1W29	1	1W34	1
1W30	1	2W29	1
1W31	1	5W69	2
1W33	1		

12620 - Chairs/Seating

Spec Item No.	Furniture Selection	Uph. Code	Qty	Description
CH-07G	Private Office and Exam Room Side Chair with Arms	G	38	As manufactured by Highmark #2409-SF-BA-W37 Lynx Heavy Duty Guest Chair with Fixed Black Arms, Upholstered Back and Seat, with Floor Saver Swivel Glides For Carpeted or Tile Floor Surfaces Size: Overall - 24"w. x 24"d. x 33"h.; 18"s.h., 18-1/4"s.d., 16-1/2"s.w., 17"b.w., 14-1/2"b.h.; Glides - 3/4"h. x 1-1/4"dia. with 3/8" Stem Finish: Frame - Silver; Arm - Standard Black; Glides - Silver/White

Performance Specification: Wall-Saver frame. Reinforced welded steel structure made out of 1" Diameter 13G steel tube. Rated to 350 lbs. Backed by Highmark's Lifetime warranty. Stacks (4) on floor. Stacks (6) on dolly. Comes packed (3) chairs to a box. Ergonomically curved back and contoured waterfall seat. Items CH-02, CH-06, CH-07 and CH-11 must all be manufactured in matching style and like finishes. Upholstered back and seat with clean through design.



Back:



Seat:



Locations:

		3E32	2	5E25	2
3E20	1	5E16	2	5E30	4
3E22	2	5E21	2	5E34	2
3E24	2	5E22	2	5E37	2
3E28	2	5E23	2	5E41	2
3E29	1	5E24	2	5E43	4
3E30	2				

12620 - Chairs/Seating

Spec Item No.	Furniture Selection	Uph. Code	Qty	Description
CH-07K	Private Office and Exam Room Side Chair with Arms	K	11	<p>As manufactured by Highmark #2409-SF-BA-W37 Lynx Heavy Duty Guest Chair with Fixed Black Arms, Upholstered Back and Seat, with Floor Saver Swivel Glides For Carpeted or Tile Floor Surfaces</p> <p>Size: Overall - 24"w. x 24"d. x 33"h.; 18"s.h., 18-1/4"s.d., 16-1/2"s.w., 17"b.w., 14-1/2"b.h.;</p> <p>Glides - 3/4"h. x 1-1/4"dia. with 3/8" Stem</p> <p>Finish: Frame - Silver; Arm - Standard Black; Glides - Silver/White</p> <p>Performance Specification: Wall-Saver frame. Reinforced welded steel structure made out of 1" Diameter 13G steel tube. Rated to 350 lbs. Backed by Highmark's Lifetime warranty. Stacks (4) on floor. Stacks (6) on dolly. Comes packed (3) chairs to a box. Ergonomically curved back and contoured waterfall seat. Items CH- 02, CH-06, CH-07 and CH-11 must all be manufactured in matching style and like finishes. Upholstered back and seat with clean through design.</p>



Back:



Seat:



Locations:

2W14	1	3E90A	1
3E80A	1	3E90B	1
3E80B	1	3E90C	1
3E80C	1		
2E76	2		
2E78	2		

12620 - Chairs/Seating

Spec Item No.	Furniture Selection	Uph. Code	Qty	Description
CH-07L	Private Office and Exam Room Side Chair with Arms	L	3	<p>As manufactured by Highmark #2409-SF-BA-W37 Lynx Heavy Duty Guest Chair with Fixed Black Arms, Upholstered Back and Seat, with Floor Saver Swivel Glides For Carpeted or Tile Floor Surfaces</p> <p>Size: Overall - 24"w. x 24"d. x 33"h.; 18"s.h., 18-1/4"s.d., 16-1/2"s.w., 17"b.w., 14-1/2"b.h.;</p> <p>Glides - 3/4"h. x 1-1/4"dia. with 3/8" Stem</p> <p>Finish: Frame - Silver; Arm - Standard Black; Glides - Silver/White</p> <p>Performance Specification: Wall-Saver frame. Reinforced welded steel structure made out of 1" Diameter 13G steel tube. Rated to 350 lbs. Backed by Highmark's Lifetime warranty. Stacks (4) on floor. Stacks (6) on dolly. Comes packed (3) chairs to a box. Ergonomically curved back and contoured waterfall seat. Items CH- 02, CH-06, CH-07 and CH-11 must all be manufactured in matching style and like finishes. Upholstered back and seat with clean through design.</p>



Back:



Seat:



Locations:

1W15	2
1W21	1

12620 - Chairs/Seating

Spec Item No.	Furniture Selection	Uph. Code	Qty	Description
CH-07M	Private Office and Exam Room Side Chair with Arms	M	195	<p>As manufactured by Highmark #2409-SF-BA-W37 Lynx Heavy Duty Guest Chair with Fixed Black Arms, Upholstered Back and Seat, with Floor Saver Swivel Glides For Carpeted or Tile Floor Surfaces</p> <p>Size: Overall - 24"w. x 24"d. x 33"h.; 18"s.h., 18-1/4"s.d., 16-1/2"s.w., 17"b.w., 14-1/2"b.h.;</p> <p>Glides - 3/4"h. x 1-1/4"dia. with 3/8" Stem</p> <p>Finish: Frame - Silver; Arm - Standard Black; Glides - Silver/White</p> <p>Performance Specification: Wall-Saver frame. Reinforced welded steel structure made out of 1" Diameter 13G steel tube. Rated to 350 lbs. Backed by Highmark's Lifetime warranty. Stacks (4) on floor. Stacks (6) on dolly. Comes packed (3) chairs to a box. Ergonomically curved back and contoured waterfall seat. Items CH- 02, CH-06, CH-07 and CH-11 must all be manufactured in matching style and like finishes. Upholstered back and seat with clean through design.</p>



Back:



Seat:



Locations:

1W35	1	2W54	1	4W39	2
1W36	1	2W55	1	4W40	2
1W37	1	2W56	1	4W49	2
1W38	1	2W57	1	4W50	4

CH-07M Private Office and Exam Room Side Chair with Arms (cont.)

12620 - Chairs/Seating

CH-07M Private Office and Exam Room Side Chair with Arms (cont.)

Locations (cont.):

1W39	1	2W58	1	4W51	2
1W40	1	2W59	1	4W52	2
1W41	1	2W61	1	4W53	2
1W42	1	2W63	1	4W54	2
1W43	1	2W65	1	4W55	2
1W45	2	2W67	1	4W56	2
1W47	1	2W69	2	4W57	2
1W49	1	2W80	1	4W58	2
1W50	1	2W82	1	4W59	2
1W51	1	2W84	1	4W61	2
1W52	1	2W86	1	4W63	2
1W53	1	2W90	1	4W65	2
1W54	1	2W92	1	4W67	2
1W55	1	3W31	1	4W69	3
1W56	1	3W33	1	5W43	3
1W57	1	3W35	1	5W45	3
1W58	1	3W37	1	5W49	2
1W59	1	3W39	1	5W51	2
1W61	1	3W41	1	5W52	1
1W63	1	3W42	1	5W53	2
1W65	2	3W43	1	5W54	2
2W30	1	3W45	2	5W55	2
2W31	1	3W47	1	5W56	2
2W32	1	3W49	1	5W57	2
2W33	1	3W51	2	5W58	2
2W34	1	3W52	1	5W59	1
2W35	1	3W53	1	5W61	2
2W37	1	3W54	1	5W63	1
2W38	1	3W55	2	5W82	2
2W39	1	3W56	1	GE27	1
2W40	1	3W57	1	GW35	2
2W41	1	3W59	1	GW37	2
2W42	1	3W61	1	GW41	2
2W43	2	3W63	1	GW43	3
2W44	1	3W65	1	GW45	3
2W45	2	3W67	1	GW49	2
2W47	1	3W69	3	GW53	2
2W49	1	4W35	2	GW59	2
2W51	1	4W36	2	GW61	2
2W52	1	4W37	2	GW63	2
2W53	1	4W38	2		

12620 - Chairs/Seating

Spec Item No.	Furniture Selection	Uph. Code	Qty	Description
CH-07N	Private Office and Exam Room Side Chair with Arms	N	164	<p>As manufactured by Highmark #2409-SF-BA-W37 Lynx Heavy Duty Guest Chair with Fixed Black Arms, Upholstered Back and Seat, with Floor Saver Swivel Glides For Carpeted or Tile Floor Surfaces</p> <p>Size: Overall - 24"w. x 24"d. x 33"h.; 18"s.h., 18-1/4"s.d., 16-1/2"s.w., 17"b.w., 14-1/2"b.h.;</p> <p>Glides - 3/4"h. x 1-1/4"dia. with 3/8" Stem</p> <p>Finish: Frame - Silver; Arm - Standard Black; Glides - Silver/White</p> <p>Performance Specification: Wall-Saver frame. Reinforced welded steel structure made out of 1" Diameter 13G steel tube. Rated to 350 lbs. Backed by Highmark's Lifetime warranty. Stacks (4) on floor. Stacks (6) on dolly. Comes packed (3) chairs to a box. Ergonomically curved back and contoured waterfall seat. Items CH- 02, CH-06, CH-07 and CH-11 must all be manufactured in matching style and like finishes. Upholstered back and seat with clean through design.</p>



Back:



Seat:



Locations:

1E29	1	2E47	1	3E59	1
1E31	1	2E48	1	3E61	3
1E41	2	2E49	1	3E63	3
1E43	1	2E50	1	3E65	1

CH-07N Private Office and Exam Room Side Chair with Arms (cont.)

12620 - Chairs/Seating

CH-07N Private Office and Exam Room Side Chair with Arms (cont.)

Locations (cont.):

1E45	1	2E51	1	3E67	1
1E47	1	2E52	1	3E69	1
1E48	1	2E53	1	3E71	1
1E49	1	2E54	1	3E73	1
1E50	1	2E55	1	4E37	3
1E51	1	2E56	1	4E39	2
1E53	1	2E57	1	4E41	2
1E55	1	2E58	1	4E43	2
1E56	1	2E59	1	4E45	2
1E57	1	2E61	2	4E47	2
1E58	1	2E63	2	4E48	2
1E59	1	2E64	1	4E49	2
1E61	2	2E65	1	4E50	2
1E62	1	2E66	1	4E51	2
1E63	1	2E67	1	4E53	2
1E64	1	2E68	1	4E54	2
1E65	1	2E69	1	4E55	2
1E66	1	2E70	1	4E56	2
1E67	1	2E71	1	4E57	2
1E68	1	2E75	1	4E58	2
1E69	1	3E17	2	4E59	2
1E71	1	3E19	2	4E61	3
1E75	1	3E21	2	4E63	3
2E19	1	3E25	1	4E64	2
2E20	2	3E37	3	4E65	2
2E22	1	3E39	1	4E66	2
2E23	1	3E41	1	4E67	2
2E25	1	3E43	1	4E69	2
2E27	1	3E45	1	4E71	2
2E28	2	3E47	1	4E73	2
2E29	1	3E49	1	5E10	2
2E37	2	3E51	1	5E12	2
2E39	1	3E53	1		
2E41	1	3E55	1		
2E43	1	3E57	1		
2E45	1				

12620 - Chairs/Seating

Spec Item No.	Furniture Selection	Uph. Code	Qty	Description
CH-08	Dining Chair with Arms	n/a	73	<p>As manufactured by KI #DN1A11-NFR-7683C-5865C-CM-GSL Doni Four-Leg Stack Chair with Arms, Two-tone Color, Polypropylene Seat/Backrest, Steel Glides and Floor Contact in Neutral Nylon Color, Stacking, Custom Pantone Poly Colors</p> <p>Size: Overall - 25-3/8"w. x 21-1/2"d. x 33-3/4"h.; 18"s.h.; Seat - 19-1/4"w. x 18-3/4"d.; 26-1/2"a.h.</p> <p>Finish: Frame - #CM Champagne Metallic; Poly Outside Shell & Arms - Pantone #7683 C; Poly Inside Shell - Pantone #5865 C</p>

Performance Specification: The backrest and seat are injection-molded polypropylene. The seat and backrest are joined by a pair of hidden articulation mechanisms, each consisting of a 14-gauge steel housing, twin 7-gauge levers and steel coil springs. While maintaining a one-piece shell appearance, this mechanism allows the backrest to recline up to 17 degrees of motion. A seat ring is made of 1/2" diameter steel wire and attached to the seat with 14-gauge steel brackets. The bottom ends of the 4-leg chair tubes are formed to be vertical where they meet the floor. The leg tubes are capped with polypropylene end caps matching the leg color. Legs are made from 3/4" diameter steel tubing. All joints are welded and the frames are finished in baked-on electrostatically-applied 30-degree gloss epoxy powder-coat paint. Tested to 300 lb. weight limit. Stacks 12-high on dolly, 6-high on floor. When equipped with arms, the support structure is a continuation of the rear leg. The armrests are injection-molded, glass-reinforced polypropylene. Arm color matches the outside shell poly color. The steel frame tube is inserted into a socket molded into the armrest and secured with a screw. The floor contact surface on the glide is neutral color nylon.



Inside



Outside &
Arms



Locations:

1E37	8	3W72	11
1W69	4	4W32A	4
2W70	13	4W70	16
3W70	11	5W72	6

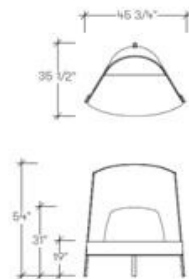
12620 - Chairs/Seating

Spec Item No.	Furniture Selection	Uph. Code	Qty	Description
CH-09U	Lounge Chair with High Back	U	4	As manufactured by Teknion - Studio #STFS1-H-U-F7 Fractals High-Back Lounge Chair with Matching Upholstered Seat and Bolster, and Matching Upholstered Interior and Exterior Back

Size: Overall - 45-3/4"w. x 35-1/2"d. x 54"h.; 19"s.h.

Finish: Frame - #F7 Satin Nickel

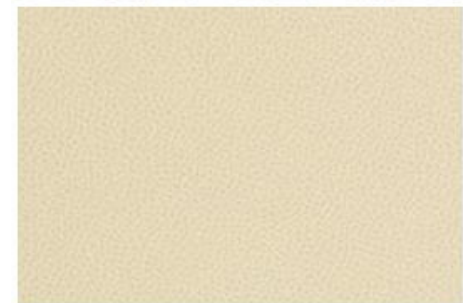
Performance Specification: The surface planes, volumes and modularity of the pieces are intended to create a broad canvas on to create distinctive looks. Boldly innovative and visually compelling.



Interior &
Exterior Back:



Seat &
Bolster:



Locations:

4W25

4

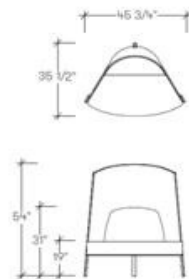
12620 - Chairs/Seating

Spec Item No.	Furniture Selection	Uph. Code	Qty	Description
CH-09X	Lounge Chair with High Back	X	2	As manufactured by Teknion - Studio #STFS1-H-U-F7 Fractals High-Back Lounge Chair with Matching Upholstered Seat and Bolster, and Matching Upholstered Interior and Exterior Back

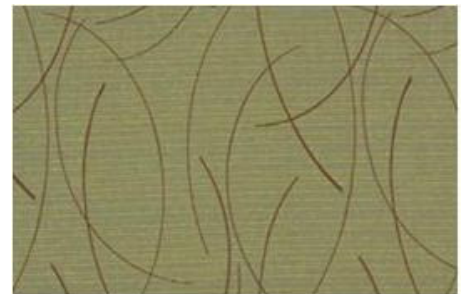
Size: Overall - 45-3/4"w. x 35-1/2"d. x 54"h.; 19"s.h.

Finish: Frame - #F7 Satin Nickel

Performance Specification: The surface planes, volumes and modularity of the pieces are intended to create a broad canvas on to create distinctive looks. Boldly innovative and visually compelling.



Interior &
Exterior Back:



Seat &
Bolster:



Locations:

3W24

2

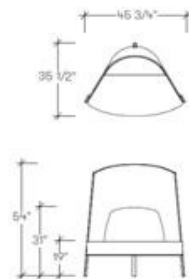
12620 - Chairs/Seating

Spec Item No.	Furniture Selection	Uph. Code	Qty	Description
CH-09DD	Lounge Chair with High Back	DD	2	As manufactured by Teknion - Studio #STFS1-H-U-F7 Fractals High-Back Lounge Chair with Matching Upholstered Seat and Bolster, and Matching Upholstered Interior and Exterior Back

Size: Overall - 45-3/4"w. x 35-1/2"d. x 54"h.; 19"s.h.

Finish: Frame - #F7 Satin Nickel

Performance Specification: The surface planes, volumes and modularity of the pieces are intended to create a broad canvas on to create distinctive looks. Boldly innovative and visually compelling.



Interior &
Exterior Back:



Seat &
Bolster:



Locations:

GW24

2

12620 - Chairs/Seating

Spec				
Item	Furniture	Uph.		
No.	Selection	Code	Qty	Description
CH-10	NOT USED			

12620 - Chairs/Seating

Spec Item No.	Furniture Selection	Uph. Code	Qty	Description
CH-11B	Bariatric Chair with Arms for Group Rooms (30")	B	46	<p>As manufactured by Highmark #2439-SF-BP-W37 Lynx 30" Bariatric Guest Chair with Fixed Arms and Armrests, with Floor Saver Swivel Glides For Carpeted or Tile Floor Surfaces</p> <p>Size: Overall - 34-3/4"w. x 27-3/4"d. x 33"h.; 30-3/4"s.w., 18-3/4"s.d., 18"s.h., 30-3/4"b.w., 14-3/4"b.h. Swivel - 3/4"h., x 1-1/4"dia. Base with 3/8" stem</p> <p>Finish: Frame - Silver; Armrest - Standard Black</p> <p>Performance Specification: Wall saver frame. Lifetime warranty on parts. Up to 500 lbs. weight rating. Reinforced welded steel structure made out of 1" Diameter 13G steel tube. Ergonomically curved back and contoured waterfall seat. Items CH-02, CH-06, CH- 07 and CH-11 must all be manufactured in matching style and like finishes. Upholstered back and seat with clean through design.</p>



Back:



Seat:



Locations:

1E20	2	2E80	9
1W10	2	2E86	9
1W20	2	2E90	9
2E10	4	2W10	9

12620 - Chairs/Seating

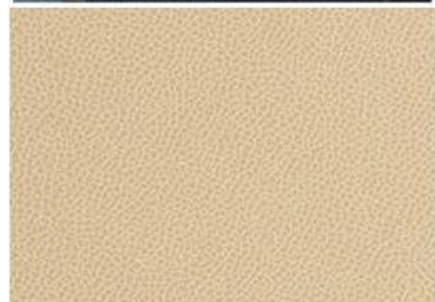
Spec Item No.	Furniture Selection	Uph. Code	Qty	Description
CH-11C	Bariatric Chair with Arms for Group Rooms (30")	C	45	<p>As manufactured by Highmark #2439-SF-BP-W37 Lynx 30" Bariatric Guest Chair with Fixed Arms and Armrests, with Floor Saver Swivel Glides For Carpeted or Tile Floor Surfaces</p> <p>Size: Overall - 34-3/4"w. x 27-3/4"d. x 33"h.; 30-3/4"s.w., 18-3/4"s.d., 18"s.h., 30-3/4"b.w., 14-3/4"b.h. Swivel - 3/4"h., x 1-1/4"dia. Base with 3/8" stem</p> <p>Finish: Frame - Silver; Armrest - Standard Black</p> <p>Performance Specification: Wall saver frame. Lifetime warranty on parts. Up to 500 lbs. weight rating. Reinforced welded steel structure made out of 1" Diameter 13G steel tube. Ergonomically curved back and contoured waterfall seat. Items CH-02, CH-06, CH-07 and CH-11 must all be manufactured in matching style and like finishes. Upholstered back and seat with clean through design.</p>



Back:



Seat:



Locations:

2W15	9	2W21	9
2W17	9	2W25	9
2W19	9		

12620 - Chairs/Seating

Spec Item No.	Furniture Selection	Uph. Code	Qty	Description
CH-11D	Bariatric Chair with Arms for Group Rooms (30")	D	26	<p>As manufactured by Highmark #2439-SF-BP-W37 Lynx 30" Bariatric Guest Chair with Fixed Arms and Armrests, with Floor Saver Swivel Glides For Carpeted or Tile Floor Surfaces</p> <p>Size: Overall - 34-3/4"w. x 27-3/4"d. x 33"h.; 30-3/4"s.w., 18-3/4"s.d., 18"s.h., 30-3/4"b.w., 14-3/4"b.h. Swivel - 3/4"h., x 1-1/4"dia. Base with 3/8" stem</p> <p>Finish: Frame - Silver; Armrest - Standard Black</p> <p>Performance Specification: Wall saver frame. Lifetime warranty on parts. Up to 500 lbs. weight rating. Reinforced welded steel structure made out of 1" Diameter 13G steel tube. Ergonomically curved back and contoured waterfall seat. Items CH-02, CH-06, CH- 07 and CH-11 must all be manufactured in matching style and like finishes. Upholstered back and seat with clean through design.</p>



Back:



Seat:



Locations:

1W80	2	1W88	2
1W84	2	2W87	9
1W85	2	2W89	9

12620 - Chairs/Seating

Spec Item No.	Furniture Selection	Uph. Code	Qty	Description
CH-11E	Bariatric Chair with Arms for Group Rooms (30")	E	9	<p>As manufactured by Highmark #2439-SF-BP-W37 Lynx 30" Bariatric Guest Chair with Fixed Arms and Armrests, with Floor Saver Swivel Glides For Carpeted or Tile Floor Surfaces</p> <p>Size: Overall - 34-3/4"w. x 27-3/4"d. x 33"h.; 30-3/4"s.w., 18-3/4"s.d., 18"s.h., 30-3/4"b.w., 14-3/4"b.h. Swivel - 3/4"h., x 1-1/4"dia. Base with 3/8" stem</p> <p>Finish: Frame - Silver; Armrest - Standard Black</p> <p>Performance Specification: Wall saver frame. Lifetime warranty on parts. Up to 500 lbs. weight rating. Reinforced welded steel structure made out of 1" Diameter 13G steel tube. Ergonomically curved back and contoured waterfall seat. Items CH-02, CH-06, CH-07 and CH-11 must all be manufactured in matching style and like finishes. Upholstered back and seat with clean through design.</p>



Back:



Seat:



Locations:

2E30

9

CH-11E Bariatric Chair with Arms for Group Rooms - 30" (cont.)

12620 - Chairs/Seating

Spec Item No.	Furniture Selection	Uph. Code	Qty	Description
CH-11G	Bariatric Chair with Arms for Group Rooms (30")	G	2	<p>As manufactured by Highmark #2439-SF-BP-W37 Lynx 30" Bariatric Guest Chair with Fixed Arms and Armrests, with Floor Saver Swivel Glides For Carpeted or Tile Floor Surfaces</p> <p>Size: Overall - 34-3/4"w. x 27-3/4"d. x 33"h.; 30-3/4"s.w., 18-3/4"s.d., 18"s.h., 30-3/4"b.w., 14-3/4"b.h. Swivel - 3/4"h., x 1-1/4"dia. Base with 3/8" stem</p> <p>Finish: Frame - Silver; Armrest - Standard Black</p> <p>Performance Specification: Wall saver frame. Lifetime warranty on parts. Up to 500 lbs. weight rating. Reinforced welded steel structure made out of 1" Diameter 13G steel tube. Ergonomically curved back and contoured waterfall seat. Items CH-02, CH-06, CH- 07 and CH-11 must all be manufactured in matching style and like finishes. Upholstered back and seat with clean through design.</p>



Back:



Seat:



Locations:

2E71A	1
5E16	1

12620 - Chairs/Seating

Spec Item No.	Furniture Selection	Uph. Code	Qty	Description
CH-11K	Bariatric Chair with Arms for Group Rooms (30")	K	1	<p>As manufactured by Highmark #2439-SF-BP-W37 Lynx 30" Bariatric Guest Chair with Fixed Arms and Armrests, with Floor Saver Swivel Glides For Carpeted or Tile Floor Surfaces</p> <p>Size: Overall - 34-3/4"w. x 27-3/4"d. x 33"h.; 30-3/4"s.w., 18-3/4"s.d., 18"s.h., 30-3/4"b.w., 14-3/4"b.h. Swivel - 3/4"h., x 1-1/4"dia. Base with 3/8" stem</p> <p>Finish: Frame - Silver; Armrest - Standard Black</p> <p>Performance Specification: Wall saver frame. Lifetime warranty on parts. Up to 500 lbs. weight rating. Reinforced welded steel structure made out of 1" Diameter 13G steel tube. Ergonomically curved back and contoured waterfall seat. Items CH-02, CH-06, CH- 07 and CH-11 must all be manufactured in matching style and like finishes. Upholstered back and seat with clean through design.</p>



Back:



Seat:



Locations:

2W14

1

12620 - Chairs/Seating

Spec Item No.	Furniture Selection	Uph. Code	Qty	Description
CH-11M	Bariatric Chair with Arms for Group Rooms (30")	M	55	<p>As manufactured by Highmark #2439-SF-BP-W37 Lynx 30" Bariatric Guest Chair with Fixed Arms and Armrests, with Floor Saver Swivel Glides For Carpeted or Tile Floor Surfaces</p> <p>Size: Overall - 34-3/4"w. x 27-3/4"d. x 33"h.; 30-3/4"s.w., 18-3/4"s.d., 18"s.h., 30-3/4"b.w., 14-3/4"b.h. Swivel - 3/4"h., x 1-1/4"dia. Base with 3/8" stem</p> <p>Finish: Frame - Silver; Armrest - Standard Black</p> <p>Performance Specification: Wall saver frame. Lifetime warranty on parts. Up to 500 lbs. weight rating. Reinforced welded steel structure made out of 1" Diameter 13G steel tube. Ergonomically curved back and contoured waterfall seat. Items CH-02, CH-06, CH-07 and CH-11 must all be manufactured in matching style and like finishes. Upholstered back and seat with clean through design.</p>



Back:



Seat:



Locations:

1W35	1	1W61	1	2W51	1
1W36	1	1W63	1		
1W37	1	1W65	1	2W53	1

CH-11M Bariatric Chair with Arms for Group Rooms - 30" (cont.)

12620 - Chairs/Seating

CH-11M Bariatric Chair with Arms for Group Rooms - 30" (cont.)

Locations (cont.):

1W38	1	2W30	1		
1W39	1	2W31	1	2W55	1
1W40	1	2W32	1		
1W41	1	2W33	1	2W57	1
1W42	1				
1W45	1	2W35	1	2W59	1
1W47	1	2W37	1	2W61	1
1W49	1	2W38	1	2W63	1
1W50	1	2W39	1	2W65	1
1W51	1	2W40	1	2W67	1
1W53	1	2W41	1	2W69	1
1W54	1	2W42	1	2W80	1
1W55	1	2W43	1	2W82	1
1W56	1	2W44	1	2W84	1
1W57	1	2W45	1	2W86	1
1W58	1	2W47	1	2W90	1
1W59	1	2W49	1	2W92	1

12620 - Chairs/Seating

Spec Item No.	Furniture Selection	Uph. Code	Qty	Description
CH-11N	Bariatric Chair with Arms for Group Rooms (30")	N	54	<p>As manufactured by Highmark #2439-SF-BP-W37 Lynx 30" Bariatric Guest Chair with Fixed Arms and Armrests, with Floor Saver Swivel Glides For Carpeted or Tile Floor Surfaces</p> <p>Size: Overall - 34-3/4"w. x 27-3/4"d. x 33"h.; 30-3/4"s.w., 18-3/4"s.d., 18"s.h., 30-3/4"b.w., 14-3/4"b.h. Swivel - 3/4"h., x 1-1/4"dia. Base with 3/8" stem</p> <p>Finish: Frame - Silver; Armrest - Standard Black</p> <p>Performance Specification: Wall saver frame. Lifetime warranty on parts. Up to 500 lbs. weight rating. Reinforced welded steel structure made out of 1" Diameter 13G steel tube. Ergonomically curved back and contoured waterfall seat. Items CH-02, CH-06, CH- 07 and CH-11 must all be manufactured in matching style and like finishes. Upholstered back and seat with clean through design.</p>



Back:



Seat:



Locations:

1E29	1	1E63	1	2E49	1
1E31	1	1E64	1	2E51	1
1E41	1	1E65	1	2E52	1

CH-11E Bariatric Chair with Arms for Group Rooms - 30" (cont.)

12620 - Chairs/Seating

CH-11E Bariatric Chair with Arms for Group Rooms - 30" (cont.)

Locations (cont.):

1E43	1	1E67	1	2E53	1
1E45	1	1E69	1	2E54	1
1E47	1	2E19	1	2E55	1
1E48	1	2E64	1	2E56	1
1E49	1	2E22	1	2E57	1
1E50	1	2E23	1	2E58	1
1E51	1	2E25	1	2E59	1
1E53	1	2E27	1	2E61	1
1E55	1	2E29	1	2E63	1
1E56	1	2E37	1	2E65	1
1E57	1	2E39	1	2E66	1
1E58	1	2E41	1	2E67	1
1E59	1	2E43	1	2E68	1
1E61	1	2E45	1	2E69	1
1E62	1	2E47	1	2E70	1

12620 - Chairs/Seating

Spec Item No.	Furniture Selection	Uph. Code	Qty	Description
CH-12P	Conference Nesting Chair with Arms and Upholstered and Plastic Back, Casters	P	83	As manufactured by KI #SNCAU-FN-PFN-C-NFR Strive Nesting Cantilever Armchair with Upholstered Seat, Poly Back, Fixed-Position T-Arms, with Carpet Casters Size: Overall - 23"w. x 22-3/4"d. x 33-3/4"h.; 17"s.w., 18"s.d., 17-1/2"s.h. Finish: Frame - #FN Flannel; Poly Back - #PFN Flannel; Casters - Black

Performance Specification: Seat flips up to allow chairs to nest for storage and transport. Seat is two-piece construction of injection-molded polypropylene, reinforced with internal steel channels, and assembled using hidden fasteners. Backrest is injection-molded polypropylene with integral steel cantilever springs. The combination of the slotted polypropylene back and the spring steel provides a supportive flexing back. Springs are nominal 4.5mm diameter chrome silicon valve spring wire. Integral molded handle on seat back makes it easy to roll chair anywhere. Flex-back design encourages movement, relaxation and enhanced circulation. Slats permit flexing; radiused back conforms to your back; contoured seat dissipates pressure points. No need to lift and stack these chairs. Just flip-up the seats and conveniently nest them for simplified storage or relocation. The legs are 1", 13-gauge high-strength steel tubing. All frame joints are welded. Casters are double wheels (60mm) of high-impact thermoplastic with high-impact plastic frame. Frame has baked-on electrostatically-applied 30 gloss epoxy powder coating .



Seat:



Locations:

1E80	30	5W70	8
1E90	30	GW10	3
		GW30	12

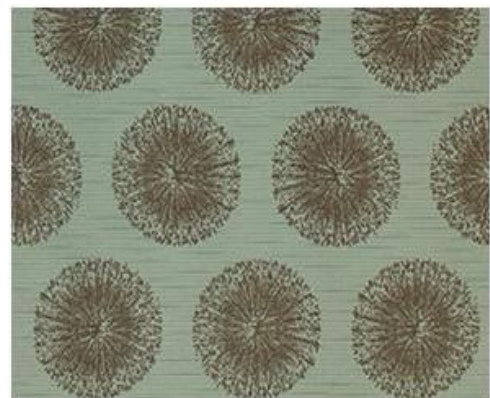
12620 - Chairs/Seating

Spec Item No.	Furniture Selection	Uph. Code	Qty	Description
CH-12Q	Conference Nesting Chair with Arms and Upholstered and Plastic Back, Casters	Q	52 Total *Below Means Hard Floor Casters; Qty: 22	As manufactured by KI #SNCAU-FN-PFN-C-NFR Strive Nesting Cantilever Armchair with Upholstered Seat, Poly Back, Fixed-Position T-Arms, with Carpet Casters OR #SNCAU-FN-PFN-S-NFR Strive Nesting Cantilever Armchair with Upholstered Seat, Poly Back, Fixed-Position T-Arms, with Hard Floor Casters Size: Overall - 23"w. x 22-3/4"d. x 33-3/4"h.; 17"s.w., 18"s.d., 17- 1/2"s.h. Finish: Frame - #FN Flannel; Poly Back - #PFN Flannel; Casters - Black

Performance Specification: Seat flips up to allow chairs to nest for storage and transport. Seat is two-piece construction of injection-molded polypropylene, reinforced with internal steel channels, and assembled using hidden fasteners. Backrest is injection-molded polypropylene with integral steel cantilever springs. The combination of the slotted polypropylene back and the spring steel provides a supportive flexing back. Springs are nominal 4.5mm diameter chrome silicon valve spring wire. Integral molded handle on seat back makes it easy to roll chair anywhere. Flex-back design encourages movement, relaxation and enhanced circulation. Slats permit flexing; radiused back conforms to your back; contoured seat dissipates pressure points. No need to lift and stack these chairs. Just flip-up the seats and conveniently nest them for simplified storage or relocation. The legs are 1", 13-gauge high-strength steel tubing. All frame joints are welded. Casters are double wheels (60mm) of high-impact thermoplastic with high-impact plastic frame. Frame has baked-on electrostatically-applied 30 gloss epoxy powder coating .



Seat:



Locations:

GW25	30	*GW24	10
		*4W25	8
		*5W13	4

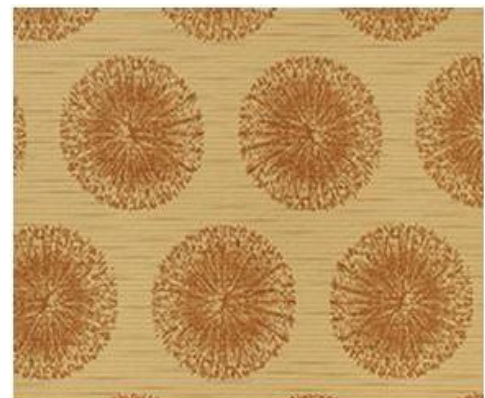
12620 - Chairs/Seating

Spec Item No.	Furniture Selection	Uph. Code	Qty	Description
CH-12R	Conference Nesting Chair with Arms and Upholstered and Plastic Back, Casters	R	24	As manufactured by KI #SNCAU-FN-PFN-C-NFR Strive Nesting Cantilever Armchair with Upholstered Seat, Poly Back, Fixed-Position T-Arms, with Carpet Casters Size: Overall - 23"w. x 22-3/4"d. x 33-3/4"h.; 17"s.w., 18"s.d., 17-1/2"s.h. Finish: Frame - #FN Flannel; Poly Back - #PFN Flannel; Casters - Black

Performance Specification: Seat flips up to allow chairs to nest for storage and transport. Seat is two-piece construction of injection-molded polypropylene, reinforced with internal steel channels, and assembled using hidden fasteners. Backrest is injection-molded polypropylene with integral steel cantilever springs. The combination of the slotted polypropylene back and the spring steel provides a supportive flexing back. Springs are nominal 4.5mm diameter chrome silicon valve spring wire. Integral molded handle on seat back makes it easy to roll chair anywhere. Flex-back design encourages movement, relaxation and enhanced circulation. Slats permit flexing; radiused back conforms to your back; contoured seat dissipates pressure points. No need to lift and stack these chairs. Just flip-up the seats and conveniently nest them for simplified storage or relocation. The legs are 1", 13-gauge high-strength steel tubing. All frame joints are welded. Casters are double wheels (60mm) of high-impact thermoplastic with high-impact plastic frame. Frame has baked-on electrostatically-applied 30 gloss epoxy powder coating .



Seat:



Locations:

2W85

24

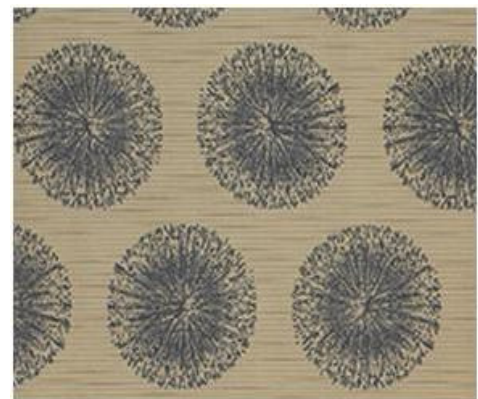
12620 - Chairs/Seating

Spec Item No.	Furniture Selection	Uph. Code	Qty	Description
CH-12S	Conference Nesting Chair with Arms and Upholstered and Plastic Back, Casters	S	67 Total *Below Means Hard Floor Casters; Qty: 1	As manufactured by KI #SNCAU-FN-PFN-C-NFR Strive Nesting Cantilever Armchair with Upholstered Seat, Poly Back, Fixed-Position T-Arms, with Carpet Casters OR #SNCAU-FN-PFN-S-NFR Strive Nesting Cantilever Armchair with Upholstered Seat, Poly Back, Fixed-Position T-Arms, with Hard Floor Casters Size: Overall - 23"w. x 22-3/4"d. x 33-3/4"h.; 17"s.w., 18"s.d., 17-1/2"s.h. Finish: Frame - #FN Flannel; Poly Back - #PFN Flannel; Casters - Black

Performance Specification: Seat flips up to allow chairs to nest for storage and transport. Seat is two-piece construction of injection-molded polypropylene, reinforced with internal steel channels, and assembled using hidden fasteners. Backrest is injection-molded polypropylene with integral steel cantilever springs. The combination of the slotted polypropylene back and the spring steel provides a supportive flexing back. Springs are nominal 4.5mm diameter chrome silicon valve spring wire. Integral molded handle on seat back makes it easy to roll chair anywhere. Flex-back design encourages movement, relaxation and enhanced circulation. Slats permit flexing; radiused back conforms to your back; contoured seat dissipates pressure points. No need to lift and stack these chairs. Just flip-up the seats and conveniently nest them for simplified storage or relocation. The legs are 1", 13-gauge high-strength steel tubing. All frame joints are welded. Casters are double wheels (60mm) of high-impact thermoplastic with high-impact plastic frame. Frame has baked-on electrostatically-applied 30 gloss epoxy powder coating .



Seat:

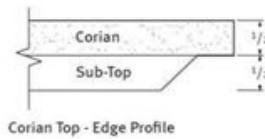


Locations:

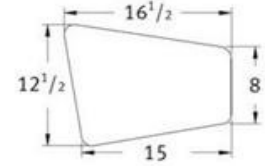
3E12 6 *2E71A 1
4E90 60

12620 - Chairs/Seating

Spec Item No.	Furniture Selection	Uph. Code	Qty	Description
CH-13T	Lounge Chair with Tablet Arm	T	2	As manufactured by Arcadia #2552-TAR13-CO-NS04-NL1 Nios Mid Back Lounge Chair, Swivel Pedestal Base, Multifunctional Rotating Corian Tablet Right (as seated) with Clear Coat Edge Finish, with Non-Skid Glides Size: Chair - 33"w. x 31-1/2"d. x 32"h.; 16-3/4"s.h.; Inside Seat 19-1/4"w., Inside Seat 20"d. Tablet - 16-1/2"w. x 12-1/2"w. x 3/4"d. (affixed right)



Corian Top - Edge Profile



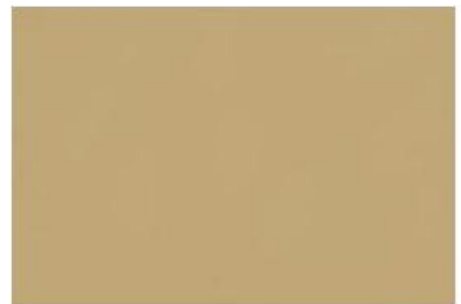
Tablet Shape

Finish: Base & Table Mounting Post - #90 Metallic Silver;
Corian - Designer White with Clear Coat Edge Finish
Fabric Pattern Code: #NL1

Performance Specification: 4-Prong swivel pedestal base manufactured in aluminum with auto-return feature as standard. SCS Indoor Advantage Gold certified. Maximum weight capacity of 300 lbs. Tablet mounting post will match chair base finish as standard, unless otherwise specified. Tablet has 270-degree tablet turning radius. Non-skid glides.



Inside Back /
Top of Seat:



Balance
of Chair:



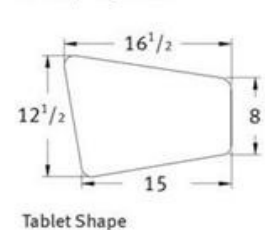
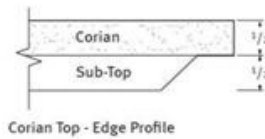
Locations:

4H10

2

12620 - Chairs/Seating

Spec Item No.	Furniture Selection	Uph. Code	Qty	Description
CH-13Z	Lounge Chair with Tablet Arm	Z	4	As manufactured by Arcadia #2552-TAR13-CO-NS04-NL1 Nios Mid Back Lounge Chair, Swivel Pedestal Base, Multifunctional Rotating Corian Tablet Right (as seated) with Clear Coat Edge Finish, with Non-Skid Glides Size: Chair - 33"w. x 31-1/2"d. x 32"h.; 16-3/4"s.h.; Inside Seat 19-1/4"w., Inside Seat 20"d. Tablet - 16-1/2"w. x 12-1/2"w. x 3/4"d. (affixed right)



Finish: Base & Table Mounting Post - #90 Metallic Silver;
Corian - Designer White with Clear Coat Edge Finish
Fabric Pattern Code: #NL1

Performance Specification: 4-Prong swivel pedestal base manufactured in aluminum with auto-return feature as standard. SCS Indoor Advantage Gold certified. Maximum weight capacity of 300 lbs. Tablet mounting post will match chair base finish as standard, unless otherwise specified. Tablet has 270-degree tablet turning radius. Non-skid glides.



Inside Back /
Top of Seat:



Balance
of Chair:



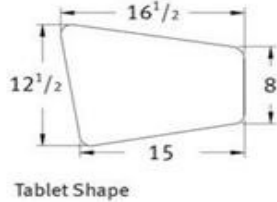
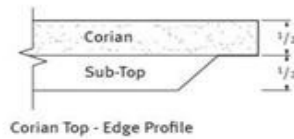
Locations:

3W24

4

12620 - Chairs/Seating

Spec Item No.	Furniture Selection	Uph. Code	Qty	Description
CH-13CC	Lounge Chair with Tablet Arm	CC	6	As manufactured by Arcadia #2552-TAR13-CO-NS04-NL1 Nios Mid Back Lounge Chair, Swivel Pedestal Base, Multifunctional Rotating Corian Tablet Right (as seated) with Clear Coat Edge Finish, with Non-Skid Glides Size: Chair - 33"w. x 31-1/2"d. x 32"h.; 16-3/4"s.h.; Inside Seat 19-1/4"w., Inside Seat 20"d. Tablet - 16-1/2"w. x 12-1/2"w. x 3/4"d. (affixed right)



Finish: Base & Table Mounting Post - #90 Metallic Silver;
Corian - Designer White with Clear Coat Edge Finish
Fabric Pattern Code: #NL1

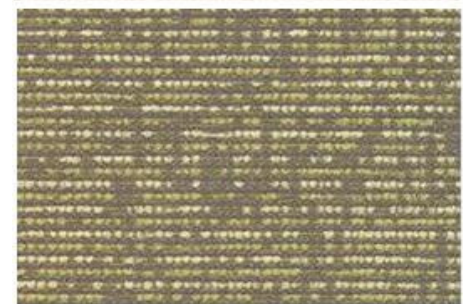
Performance Specification: 4-Prong swivel pedestal base manufactured in aluminum with auto-return feature as standard. SCS Indoor Advantage Gold certified. Maximum weight capacity of 300 lbs. Tablet mounting post will match chair base finish as standard, unless otherwise specified. Tablet has 270-degree tablet turning radius. Non-skid glides.



Inside Back /
Top of Seat:



Balance
of Chair:

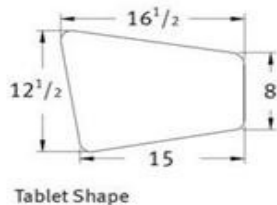
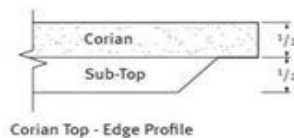


Locations:

GW90A	2
GW24	4

12620 - Chairs/Seating

Spec Item No.	Furniture Selection	Uph. Code	Qty	Description
CH-13FF	Lounge Chair with Tablet Arm	FF	4	As manufactured by Arcadia #2552-TAR13-CO-NS04-NL1 Nios Mid Back Lounge Chair, Swivel Pedestal Base, Multifunctional Rotating Corian Tablet Right (as seated) with Clear Coat Edge Finish, with Non-Skid Glides Size: Chair - 33"w. x 31-1/2"d. x 32"h.; 16-3/4"s.h.; Inside Seat 19-1/4"w., Inside Seat 20"d. Tablet - 16-1/2"w. x 12-1/2"w. x 3/4"d. (affixed right)



Finish: Base & Table Mounting Post - #90 Metallic Silver;
Corian - Designer White with Clear Coat Edge Finish
Fabric Pattern Code: #NL1

Performance Specification: 4-Prong swivel pedestal base manufactured in aluminum with auto-return feature as standard. SCS Indoor Advantage Gold certified. Maximum weight capacity of 300 lbs. Tablet mounting post will match chair base finish as standard, unless otherwise specified. Tablet has 270-degree tablet turning radius. Non-skid glides.



Inside Back /
Top of Seat:



Balance
of Chair:



Locations:

4W47

4

12620 - Chairs/Seating

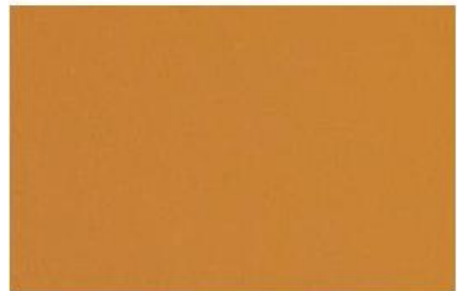
Spec Item No.	Furniture Selection	Uph. Code	Qty	Description
CH-14MM	Waiting Area Unit, 1-Seat	MM	4	<p>As manufactured by Arcadia #4410-CO-90-SH1 Soleil Single Guest Chair with Corian Arm Caps, White Oak Wood for Lower Portion of Arm Cap with Standard Glides</p> <p>Size: Overall - 24-1/2"w. x 26-1/21"d. x 34"h.; 18"s.h., 24-3/4"a.h.; Inside Seat Width - 20-1/2"; Inside Seat Depth - 18"</p> <p>Finish: Frame - #90 Metallic Silver; Corian - Designer White; Wood Lower Portion of Arm Cap - #18 Slate Grey White Oak</p> <p>Performance Specification: Metal seat frame construction ensures durability and allows in-field component replacement. Passive flex back motion provides long-term seated comfort. Arm cap features radiused edges for smooth surface contact; all styles field-replaceable. Clean-outs on every side, including between the seat and back. Enables crumbs and debris to fall through for maintenance ease. Wall-saver leg design. SCS Indoor Advantage Gold certified. Replaceable componentry. 350 lbs. Maximum seat capacity.</p>



Back:



Seat:



Locations:

2W91

4

12620 - Chairs/Seating

Spec Item No.	Furniture Selection	Uph. Code	Qty	Description
CH-14NN	Waiting Area Unit, 1-Seat	NN	7	As manufactured by Arcadia
			Total	#4410-CO-90-SH1 Soleil Single Guest Chair with Corian Arm Caps, White Oak Wood for Lower Portion of Arm Cap with Standard Glide OR
			* Below Means Non-Skid Glides; Qty: 3	#4410-CO-90-SH1-NS07B Soleil Single Guest Chair with Corian Arm Caps, White Oak Wood for Lower Portion of Arm Cap with Non-Skid Glides Size: Overall - 24-1/2"w. x 26-1/21"d. x 34"h.; 18"s.h., 24-3/4"a.h.; Inside Seat Width - 20-1/2"; Inside Seat Depth - 18" Finish: Frame - #90 Metallic Silver; Corian - Designer White; Wood Lower Portion of Arm Cap - #18 Slate Grey White Oak

Performance Specification: Metal seat frame construction ensures durability and allows in-field component replacement. Passive flex back motion provides long-term seated comfort. Arm cap features radiused edges for smooth surface contact; all styles field-replaceable. Clean-outs on every side, including between the seat and back. Enables crumbs and debris to fall through for maintenance ease. Wall-saver leg design. SCS Indoor Advantage Gold certified. Replaceable componentry. 350 lbs. Maximum seat capacity.



Back:



Seat:



Locations:

1W11	4	*GW11	2
		*GW15	1

12620 - Chairs/Seating

Spec Item No.	Furniture Selection	Uph. Code	Qty	Description
CH-15Y	Waiting Area Unit, 2-Seat	Y	4	<p>As manufactured by Arcadia #4410-2-CO-90-SH1 Soleil Two-Seat Tandem with Corian Arm Caps, White Oak Wood for Lower Portion of Arm Cap with Standard Glides</p> <p>Size: Overall - 46-1/2"w. x 26-1/2"d. x 34"h.; 18"s.h., 24-3/4"a.h.; Inside Seat Width - 20-1/2"; Inside Seat Depth - 18"</p> <p>Finish: Frame - #90 Metallic Silver; Corian - Designer White; Wood Lower Portion of Arm Cap - #18 Slate Grey White Oak</p> <p>Performance Specification: Metal seat frame construction ensures durability and allows in-field component replacement. Passive flex back motion provides long-term seated comfort. Arm cap features radiused edges for smooth surface contact; all styles are field-replaceable. Clean-outs on every side, including between the seat and back. Enables crumbs and debris to fall through for maintenance ease. Wall-saver leg design. SCS Indoor Advantage Gold certified. Replaceable componentry. 350 lbs. Maximum seat capacity.</p>



Back:



Seat:



Locations:

2E24

4

12620 - Chairs/Seating

Spec Item No.	Furniture Selection	Uph. Code	Qty	Description
CH-15KK	Waiting Area Unit, 2-Seat	KK	1	<p>As manufactured by Arcadia #4410-2-CO-90-SH1 Soleil Two-Seat Tandem with Corian Arm Caps, White Oak Wood for Lower Portion of Arm Cap with Standard Glides</p> <p>Size: Overall - 46-1/2"w. x 26-1/2"d. x 34"h.; 18"s.h., 24-3/4"a.h.; Inside Seat Width - 20-1/2"; Inside Seat Depth - 18"</p> <p>Finish: Frame - #90 Metallic Silver; Corian - Designer White; Wood Lower Portion of Arm Cap - #18 Slate Grey White Oak</p> <p>Performance Specification: Metal seat frame construction ensures durability and allows in-field component replacement. Passive flex back motion provides long-term seated comfort. Arm cap features radiused edges for smooth surface contact; all styles are field-replaceable. Clean-outs on every side, including between the seat and back. Enables crumbs and debris to fall through for maintenance ease. Wall-saver leg design. SCS Indoor Advantage Gold certified. Replaceable componentry. 350 lbs. Maximum seat capacity.</p>



Back:



Seat:



Locations:

GW90 1

12620 - Chairs/Seating

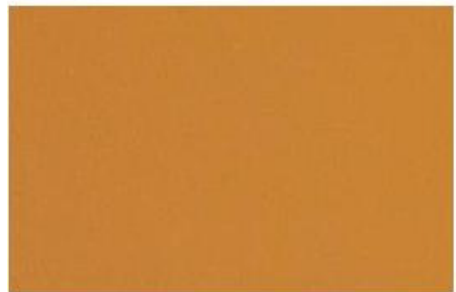
Spec Item No.	Furniture Selection	Uph. Code	Qty	Description
CH-15MM	Waiting Area Unit, 2-Seat	MM	2	<p>As manufactured by Arcadia #4410-2-CO-90-SH1 Soleil Two-Seat Tandem with Corian Arm Caps, White Oak Wood for Lower Portion of Arm Cap with Standard Glides</p> <p>Size: Overall - 46-1/2"w. x 26-1/2"d. x 34"h.; 18"s.h., 24-3/4"a.h.; Inside Seat Width - 20-1/2"; Inside Seat Depth - 18"</p> <p>Finish: Frame - #90 Metallic Silver; Corian - Designer White; Wood Lower Portion of Arm Cap - #18 Slate Grey White Oak</p> <p>Performance Specification: Metal seat frame construction ensures durability and allows in-field component replacement. Passive flex back motion provides long-term seated comfort. Arm cap features radiused edges for smooth surface contact; all styles are field-replaceable. Clean-outs on every side, including between the seat and back. Enables crumbs and debris to fall through for maintenance ease. Wall-saver leg design. SCS Indoor Advantage Gold certified. Replaceable componentry. 350 lbs. Maximum seat capacity.</p>



Back:



Seat:



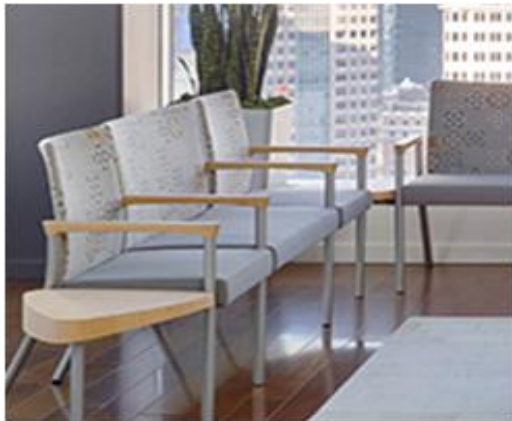
Locations:

1W91

2

12620 - Chairs/Seating

Spec Item No.	Furniture Selection	Uph. Code	Qty	Description
CH-16Y	Waiting Area Unit, 3-Seat	Y	1	<p>As manufactured by Arcadia #4410-3-CO-90-SH1 Soleil Three-Seat Tandem with Corian Arm Caps, White Oak Wood for Lower Portion of Arm Cap with Standard Glides</p> <p>Size: Overall - 69"w. x 26-1/21"d. x 34"h.; 18"s.h., 24-3/4"a.h.; Inside Seat Width - 20-1/2"; Inside Seat Depth - 18"</p> <p>Finish: Frame - #90 Metallic Silver; Corian - Designer White; Wood Lower Portion of Arm Cap - #18 Slate Grey White Oak</p> <p>Performance Specification: Metal seat frame construction ensures durability and allows in-field component replacement. Passive flex back motion provides long-term seated comfort. Arm cap features radiused edges for smooth surface contact; all styles field replaceable. Clean-outs on every side, including between the seat and back. Enables crumbs and debris to fall through for maintenance ease. Wall-saver leg design. SCS Indoor Advantage Gold certified. Replaceable componentry. 350 lbs. Maximum seat capacity.</p>



Back:



Seat:



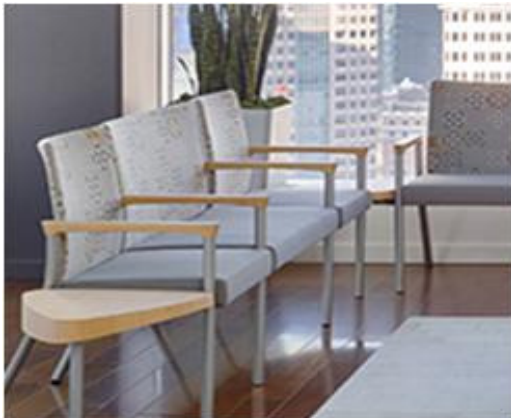
Locations:

2E24

1

12620 - Chairs/Seating

Spec Item No.	Furniture Selection	Uph. Code	Qty	Description
CH-16JJ	Waiting Area Unit, 3-Seat	JJ	8	<p>As manufactured by Arcadia #4410-3-CO-90-SH1-NS07B Soleil Three-Seat Tandem with Corian Arm Caps, White Oak Wood for Lower Portion of Arm Cap with Non-Skid Glides</p> <p>Size: Overall - 69"w. x 26-1/21"d. x 34"h.; 18"s.h., 24-3/4"a.h.; Inside Seat Width - 20-1/2"; Inside Seat Depth - 18"</p> <p>Finish: Frame - #90 Metallic Silver; Corian - Designer White; Wood Lower Portion of Arm Cap - #18 Slate Grey White Oak</p> <p>Performance Specification: Metal seat frame construction ensures durability and allows in-field component replacement. Passive flex back motion provides long-term seated comfort. Arm cap features radiused edges for smooth surface contact; all styles field replaceable. Clean-outs on every side, including between the seat and back. Enables crumbs and debris to fall through for maintenance ease. Wall-saver leg design. SCS Indoor Advantage Gold certified. Replaceable componentry. 350 lbs. Maximum seat capacity.</p>



Back:



Seat:

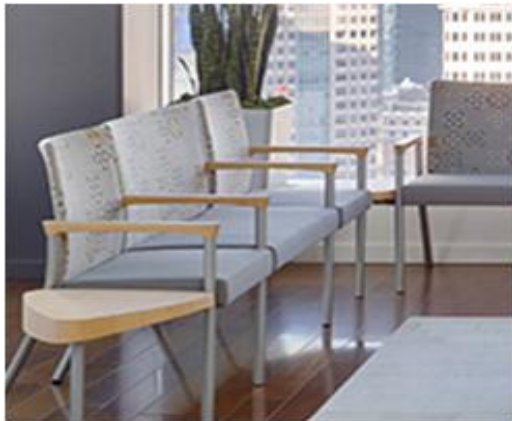


Locations:

1W24	4
2W24	4

12620 - Chairs/Seating

Spec Item No.	Furniture Selection	Uph. Code	Qty	Description
CH-16KK	Waiting Area Unit, 3-Seat	KK	1	<p>As manufactured by Arcadia #4410-3-CO-90-SH1 Soleil Three-Seat Tandem with Corian Arm Caps, White Oak Wood for Lower Portion of Arm Cap with Standard Glides</p> <p>Size: Overall - 69"w. x 26-1/21"d. x 34"h.; 18"s.h., 24-3/4"a.h.; Inside Seat Width - 20-1/2"; Inside Seat Depth - 18"</p> <p>Finish: Frame - #90 Metallic Silver; Corian - Designer White; Wood Lower Portion of Arm Cap - #18 Slate Grey White Oak</p> <p>Performance Specification: Metal seat frame construction ensures durability and allows in-field component replacement. Passive flex back motion provides long-term seated comfort. Arm cap features radiused edges for smooth surface contact; all styles field replaceable. Clean-outs on every side, including between the seat and back. Enables crumbs and debris to fall through for maintenance ease. Wall-saver leg design. SCS Indoor Advantage Gold certified. Replaceable componentry. 350 lbs. Maximum seat capacity.</p>



Back:



Seat:

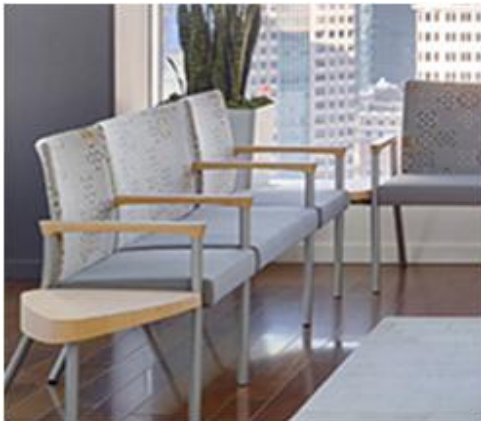


Locations:

3E10 1

12620 - Chairs/Seating

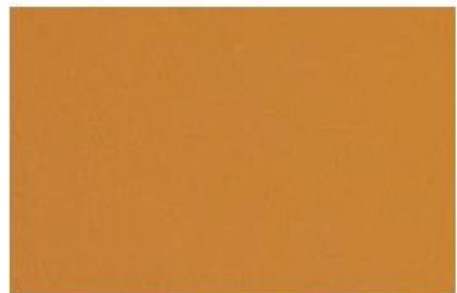
Spec Item No.	Furniture Selection	Uph. Code	Qty	Description
CH-16MM	Waiting Area Unit, 3-Seat	MM	4	<p>As manufactured by Arcadia #4410-3-CO-90-SH1 Soleil Three-Seat Tandem with Corian Arm Caps, White Oak Wood for Lower Portion of Arm Cap with Standard Glides</p> <p>Size: Overall - 69"w. x 26-1/21"d. x 34"h.; 18"s.h., 24-3/4"a.h.; Inside Seat Width - 20-1/2"; Inside Seat Depth - 18"</p> <p>Finish: Frame - #90 Metallic Silver; Corian - Designer White; Wood Lower Portion of Arm Cap - #18 Slate Grey White Oak</p> <p>Performance Specification: Metal seat frame construction ensures durability and allows in-field component replacement. Passive flex back motion provides long-term seated comfort. Arm cap features radiused edges for smooth surface contact; all styles field replaceable. Clean-outs on every side, including between the seat and back. Enables crumbs and debris to fall through for maintenance ease. Wall-saver leg design. SCS Indoor Advantage Gold certified. Replaceable componentry. 350 lbs. Maximum seat capacity.</p>



Back:



Seat:

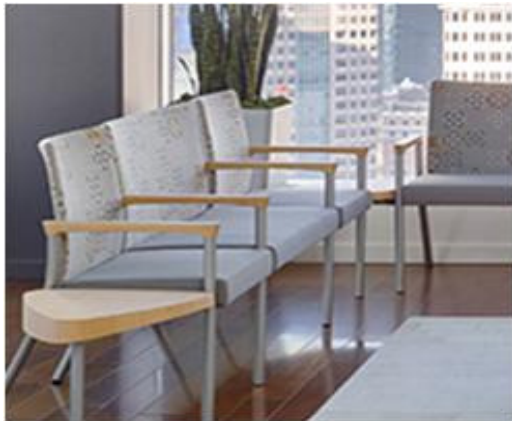


Locations:

1W91	2
2W91	2

12620 - Chairs/Seating

Spec Item No.	Furniture Selection	Uph. Code	Qty	Description
CH-1600	Waiting Area Unit, 3-Seat	OO	5	<p>As manufactured by Arcadia #4410-3-CO-90-SH1 Soleil Three-Seat Tandem with Corian Arm Caps, White Oak Wood for Lower Portion of Arm Cap with Standard Glide</p> <p>Size: Overall - 69"w. x 26-1/21"d. x 34"h.; 18"s.h., 24-3/4"a.h.; Inside Seat Width - 20-1/2"; Inside Seat Depth - 18"</p> <p>Finish: Frame - #90 Metallic Silver; Corian - Designer White; Wood Lower Portion of Arm Cap - #18 Slate Grey White Oak</p> <p>Performance Specification: Metal seat frame construction ensures durability and allows in-field component replacement. Passive flex back motion provides long-term seated comfort. Arm cap features radiused edges for smooth surface contact; all styles field replaceable. Clean-outs on every side, including between the seat and back. Enables crumbs and debris to fall through for maintenance ease. Wall-saver leg design. SCS Indoor Advantage Gold certified. Replaceable componentry. 350 lbs. Maximum seat capacity.</p>



Back:



Seat:



Locations:

1W11

5

12620 - Chairs/Seating

Spec Item No.	Furniture Selection	Uph. Code	Qty	Description
CH-17Y	Hip Style Chair	Y	1	As manufactured by Arcadia #4457-CO-90-SH1 Soleil Hip Chair with Corian Arm Caps, White Oak Wood for Lower Portion of Arm Cap, Non-skid Foot Step is Positioned 6-1/2" From Floor, with Standard Glides

Size: Overall - 24-1/2"w. x 26-1/2"d. x 41-1/2"h.; 25"s.h.,
32-1/4"a.h.; Inside Seat Width - 20-1/2"; Inside Seat Depth - 18"

Finish: Frame - #90 Metallic Silver; Corian - Designer White;
Wood Lower Portion of Arm Cap - #18 Slate Grey White Oak

Performance Specification: Metal seat frame construction ensures durability and allows in-field component replacement. Passive flex back motion provides long-term seated comfort. Arm cap features radiused edges for smooth surface contact; all styles field replaceable. Clean-outs on every side, including between the seat and back. Enables crumbs and debris to fall through for maintenance ease. Wall-saver leg design. SCS Indoor Advantage Gold certified. Replaceable componentry. 350 lbs. Maximum seat capacity.



Back:



Seat:



Locations:

2E24 1

12620 - Chairs/Seating

Spec Item No.	Furniture Selection	Uph. Code	Qty	Description
CH-17KK	Hip Style Chair	KK	4	As manufactured by Arcadia #4457-CO-90-SH1 Soleil Hip Chair with Corian Arm Caps, White Oak Wood for Lower Portion of Arm Cap, Non-skid Foot Step is Positioned 6-1/2" From Floor, with Standard Glides

Size: Overall - 24-1/2"w. x 26-1/2"d. x 41-1/2"h.; 25"s.h., 32-1/4"a.h.; Inside Seat Width - 20-1/2"; Inside Seat Depth - 18"

Finish: Frame - #90 Metallic Silver; Corian - Designer White; Wood Lower Portion of Arm Cap - #18 Slate Grey White Oak

Performance Specification: Metal seat frame construction ensures durability and allows in-field component replacement. Passive flex back motion provides long-term seated comfort. Arm cap features radiused edges for smooth surface contact; all styles field replaceable. Clean-outs on every side, including between the seat and back. Enables crumbs and debris to fall through for maintenance ease. Wall-saver leg design. SCS Indoor Advantage Gold certified. Replaceable componentry. 350 lbs. Maximum seat capacity.



Back:



Seat:



Locations:

GW90A	2
3E10	2

12620 - Chairs/Seating

Spec Item No.	Furniture Selection	Uph. Code	Qty	Description
CH-17MM	Hip Style Chair	MM	3	As manufactured by Arcadia #4457-CO-90-SH1 Soleil Hip Chair with Corian Arm Caps, White Oak Wood for Lower Portion of Arm Cap, Non-skid Foot Step is Positioned 6-1/2" From Floor, with Standard Glides

Size: Overall - 24-1/2"w. x 26-1/2"d. x 41-1/2"h.; 25"s.h., 32-1/4"a.h.; Inside Seat Width - 20-1/2"; Inside Seat Depth - 18"

Finish: Frame - #90 Metallic Silver; Corian - Designer White; Wood Lower Portion of Arm Cap - #18 Slate Grey White Oak

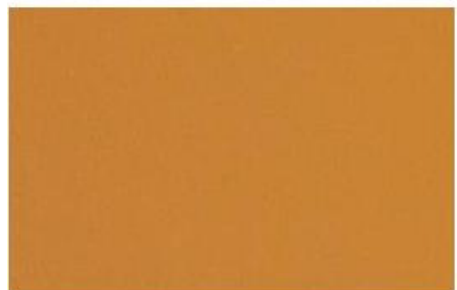
Performance Specification: Metal seat frame construction ensures durability and allows in-field component replacement. Passive flex back motion provides long-term seated comfort. Arm cap features radiused edges for smooth surface contact; all styles field replaceable. Clean-outs on every side, including between the seat and back. Enables crumbs and debris to fall through for maintenance ease. Wall-saver leg design. SCS Indoor Advantage Gold certified. Replaceable componentry. 350 lbs. Maximum seat capacity.



Back:



Seat:



Locations:

1W91	1
2W91	2

12620 - Chairs/Seating

Spec Item No.	Furniture Selection	Uph. Code	Qty	Description
CH-17NN	Hip Style Chair	NN	2	As manufactured by Arcadia #4457-CO-90-SH1 Soleil Hip Chair with Corian Arm Caps, White Oak Wood for Lower Portion of Arm Cap, Non-skid Foot Step is Positioned 6-1/2" From Floor, with Standard Glides

Size: Overall - 24-1/2"w. x 26-1/2"d. x 41-1/2"h.; 25"s.h., 32-1/4"a.h.; Inside Seat Width - 20-1/2"; Inside Seat Depth - 18"

Finish: Frame - #90 Metallic Silver; Corian - Designer White; Wood Lower Portion of Arm Cap - #18 Slate Grey White Oak

Performance Specification: Metal seat frame construction ensures durability and allows in-field component replacement. Passive flex back motion provides long-term seated comfort. Arm cap features radiused edges for smooth surface contact; all styles field replaceable. Clean-outs on every side, including between the seat and back. Enables crumbs and debris to fall through for maintenance ease. Wall-saver leg design. SCS Indoor Advantage Gold certified. Replaceable componentry. 350 lbs. Maximum seat capacity.



Back:



Seat:



Locations:

1W11 2

12620 - Chairs/Seating

Spec Item No.	Furniture Selection	Uph. Code	Qty	Description
CH-18	Patio Chair	n/a	38	As manufactured by West Coast Industries #CYCA Courtyard Outdoor Arm Chair Size: Overall - 20-1/2"w. x 20-1/2"d. x 33"h. Finish: Metallics # MSL Silver

Performance Specification: Stacks 6-high. Weight 15 lbs. All outdoor products manufactured by WCI are warranted to the original purchaser covering normal usage for a period of one year from the date of the original invoice. WCI will replace or repair (at their discretion) without cost to customer any item found to be defective as a result of defective material or workmanship. They will not repair any item which has been abused or subjected to any use other than that which was originally intended for product. Any repairs by the customer must receive specific written authorization from WCI before being executed on location to receive proper reimbursement for associated costs. In no event shall liability under this warranty exceed the original purchase price.



Locations:

2W71	4	5W71	4
3W71	4	GW24A	8
4W15	6	GW25A	8
4W71	4		

12620 - Chairs/Seating

Spec Item No.	Furniture Selection	Uph. Code	Qty	Description
CH-19N	Single Seat Chair with Arms	N	1	<p>As manufactured by Carolina Business Furniture #472-1-MWS-90 Serony Fully Upholstered Single Lounge Chair with Clean-Thru Design, Wall Saver Legs, Tight Cushion, Solid Surface Arm Caps, Non-Marring Adjustable Glides, and Powdercoat Frame Finish</p> <p>Size: Overall - 27"w. x 25-1/2"d. x 31"h. Seat - 23"s.w. x 20"s.d., x 18"s.h.; 25"a.h. Seat to Top of Back - 13"</p> <p>Finish: Corian Arm Caps - #MWS Modern White; Frame - #90 Metallic Silver</p> <p>Performance Specification: SCS Indoor Advantage Gold Certified. Limited Lifetime Warranty.</p>



Back:



Seat:



Locations:

3E17 1

12620 - Chairs/Seating

Spec Item No.	Furniture Selection	Uph. Code	Qty	Description
CH-19II	Single Seat Chair with Arms	II	15	<p>As manufactured by Carolina Business Furniture #472-1-MWS-90 Serony Fully Upholstered Single Lounge Chair with Clean-Thru Design, Wall Saver Legs, Tight Cushion, Solid Surface Arm Caps, Non-Marring Adjustable Glides, and Powdercoat Frame Finish</p> <p>Size: Overall - 27"w. x 25-1/2"d. x 31"h. Seat - 23"s.w. x 20"s.d., x 18"s.h.; 25"a.h. Seat to Top of Back - 13"</p> <p>Finish: Corian Arm Caps - #MWS Modern White; Frame - #90 Metallic Silver</p> <p>Performance Specification: SCS Indoor Advantage Gold Certified. Limited Lifetime Warranty.</p>



Back:



Seat:



Locations:

1W24	6
2W24	6
5W05	3

12620 - Chairs/Seating

Spec Item No.	Furniture Selection	Uph. Code	Qty	Description
CH-20	Café Table Stool, Armless	n/a	70	<p>As manufactured by KI #DN4A00H30-NFR-7683C-5865C-CM-GSL Doni Four-Leg Armless 30" Café Stool, Two-tone Color, Polypropylene Seat/Backrest, Steel Glides and Floor Contact in Neutral Nylon Color, Non- stacking, Custom Pantone Poly Colors</p> <p>Size: Overall - 22-1/2"w. x 21-1/2"d. x 45-3/4"h.; 30"s.h.; Seat - 19-1/4"w. x 18-3/4"d.</p> <p>Finish: Frame - #CM Champagne Metallic; Poly Outside Shell - Pantone #7683 C; Poly Inside Shell - Pantone #5865 C</p> <p>Performance Specification: The backrest and seat are injection-molded polypropylene. The seat and backrest are joined by a pair of hidden articulation mechanisms, each consisting of a 14-gauge steel housing, twin 7-gauge levers and steel coil springs. While maintaining a one-piece shell appearance, this mechanism allows the backrest to recline up to 17 degrees of motion. A seat ring is made of 1/2" diameter steel wire and attached to the seat with 14-gauge steel brackets. Legs are made from 3/4" diameter steel tubing, and the footring is formed of 1/2" diameter steel wire. All joints are welded and the frames are finished in either baked-on electrostatically-applied 30-degree gloss epoxy powder-coat paint. Café stools are equipped with swivel glides in a bright steel finish. The floor contact surface on the glide is neutral color nylon. Tested to 300 lb. weight limit.</p>



Inside



Outside



Locations:

1E25	2	3W24	4	5W01	8
2H31	6	3W71A	6	5W71	6
3E62	2	4H10	6	5W72	4
3E80	2	4W01	8	GW24	4
3E90	2	4W70	6	GW90A	4

12620 - Chairs/Seating

Spec Item No.	Furniture Selection	Uph. Code	Qty	Description
CH-21M	Office Lounge Chair	M	5	<p>As manufactured by Arcadia #2561-NS11-NL4 Nios High-Back Lounge Chair, Sled Base with Non-Skid Glides</p> <p>Size: Overall - 33"w. x 31-1/2"d. x 41"h.; 16-3/4"s.h.; Inside Seat 19-1/4"w. x 20"d.</p> <p>Finish: Base - #90 Metallic Silver Fabric Pattern Code: #NL4</p> <p>Performance Specification: 4-Prong swivel pedestal base manufactured in aluminum with auto-return feature as standard. SCS Indoor Advantage Gold certified. Maximum weight capacity of 350 lbs. for sled base.</p>



Inside Headrest
& Back /
Top of Seat:



Balance
of Chair:



Locations:

GW39	1
GW47	2
GW55	1
GW57	1

12620 - Chairs/Seating

Spec Item No.	Furniture Selection	Uph. Code	Qty	Description
CH-21HH	Office Lounge Chair	HH	1	As manufactured by Arcadia #2561-NS11-NL4 Nios High-Back Lounge Chair, Sled Base with Non-Skid Glides

Size: Overall - 33"w. x 31-1/2"d. x 41"h.; 16-3/4"s.h.;
Inside Seat 19-1/4"w. x 20"d.

Finish: Base - #90 Metallic Silver
Fabric Pattern Code: #NL4

Performance Specification: 4-Prong swivel pedestal base
manufactured in aluminum with auto-return feature as standard.
SCS Indoor Advantage Gold certified. Maximum weight capacity
of 350 lbs. for sled base.



Inside Headrest
& Back /
Top of Seat:



Balance
of Chair:



Locations:

2E80A 1

12620 - Chairs/Seating

Spec Item No.	Furniture Selection	Uph. Code	Qty	Description
CH-22	Swivel Task Chair with Arms	n/a	2	<p>As manufactured by KI #SPDCAP-NO-NFR-S Strive Task Swivel Chair without Arms, Not Upholstered on Seat or Back, Height Adjustability, with Hard Floor Casters</p> <p>Size: Overall - 23"w. x 22-3/4"d. x 33-3/4"h.; 17"s.w., 18"s.d., 17-1/2"s.h.</p> <p>Finish: Frame - #ND Nordic; Poly Back - #PND Nordic Casters - Black</p>

Performance Specification: Seat flips up to allow chairs to nest for storage and transport. Seat is two-piece construction of injection-molded polypropylene, reinforced with internal steel channels, and assembled using hidden fasteners. Backrest is injection-molded polypropylene with integral steel cantilever springs. The combination of the slotted polypropylene back and the spring steel provides a supportive flexing back. Springs are nominal 4.5mm diameter chrome silicon valve spring wire. Integral molded handle on seat back makes it easy to roll chair anywhere. Flex-back design encourages movement, relaxation and enhanced circulation. Slats permit flexing; radiused back conforms to your back; contoured seat dissipates pressure points. No need to lift and stack these chairs. Just flip-up the seats and conveniently nest them for simplified storage or relocation. The legs are 1", 13-gauge high-strength steel tubing. All frame joints are welded. Casters are double wheels (60mm) of high-impact thermoplastic with high-impact plastic frame. Frame has baked-on electrostatically-applied 30 gloss epoxy powder coating .



Locations:

GW21 2

12620 - Chairs/Seating

Spec Item No.	Furniture Selection	Uph. Code	Qty	Description
CH-23	Exam Room Chair with Arms and Casters	M	8	<p>As manufactured by Highmark #2209-SF-BA-W16 Lynx Guest Chair with Fixed Black Arms, Upholstered Back and Seat with #W-16 Soft Wheel Casters with Safety Break for Hard Surfaces</p> <p>Size: Overall - 24"w. x 23-1/2"d. x 33"h.</p> <p>Finish: Frame - Silver; Arm - Standard Black; Casters - #W-16 Soft Wheel with Safety Break</p> <p>Performance Specification: Wall-Saver frame. Reinforced welded steel structure made out of 1" Diameter 13G steel tube. Rated to 350 lbs. Backed by Highmark's Lifetime warranty. Stacks (4) on floor. Stacks (6) on dolly. Comes packed (3) chairs to a box. Ergonomically curved back and contoured waterfall seat. Upholstered back and seat with clean through design.</p>



Back:



Seat:



Locations:

5W65	4
5W67	4

12620 - Chairs/Seating

Spec Item No.	Furniture Selection	Uph. Code	Qty	Description
CH-24	Office Folding Chair with Upholstered Seat and Back	M	20	As manufactured by Weiland Each Unit to Consist of:
			(1)	#7028202 Plyfold Folding Chair with Upholstered Seat and Back, 2" Wider, Wood Backside, Stacking, Back Edge Wall Guard, Plastitack Glides Size: Overall - 21"w. x 22-3/4"d. x 32-1/2"h.; 18.25"s.w.; 18"s.d.; 18"s.h. Finish: Wood - Beech
			(1)	#717003 Plyfold SmartRail Size: Overall - 23"w. x 3"d. x 5"h.

Performance Specification: Chair has a weight capacity of 400 lbs. Solid wood construction provides durability and strength. Contoured cushions provide ergonomic comfort and are easily removable for cleaning, repair or replacement. Hidden hinges eliminate potential pinch points. Stackable to 20 high on dolly. Back edge wall guard is standard on upholstered backs to prevent damage. Stores easily on SmartRail hanger system. SmartRail® is a patented product, US patent no. 9,486,082. No additional hardware is needed. SmartRail® requires no additional hardware to hang the chair. All wall fasteners are included with the SmartRail®. 10 year warranty, including foam.



Back:



Seat:



Locations:

5W29	1	5W35	1	5W41	1
5W30	2	5W36	2	5W42	2
5W31	1	5W37	1	5W44	2
5W33	1	5W39	1	5W47	1
5W34	2	5W40	2		

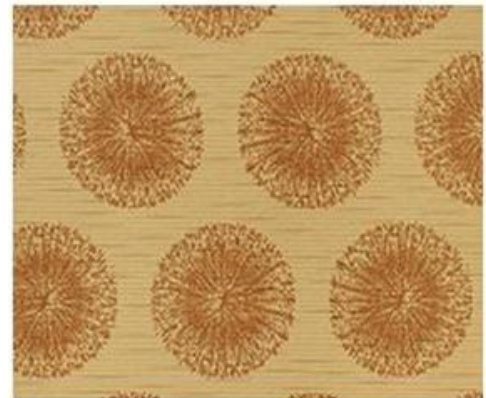
12620 - Chairs/Seating

Spec Item No.	Furniture Selection	Uph. Code	Qty	Description
CH-25	Exam Room Task Chair, Armless, with Casters and Upholstered Seat and Plastic Back	R	2	As manufactured by KI #SPDNAU-FN-NFR-C Strive Armless Task Chair with Upholstered Seat, Poly Back, with Carpet Casters Size: Overall - 23"w. x 22-3/4"d. x 33-3/4"h.; 17"s.w., 18"s.d., 17-1/2"s.h. Finish: Frame - #FN Flannel; Poly Back - #PFN Flannel; Casters - Black

Performance Specification: Seat flips up to allow chairs to nest for storage and transport. Seat is two-piece construction of injection-molded polypropylene, reinforced with internal steel channels, and assembled using hidden fasteners. Backrest is injection-molded polypropylene with integral steel cantilever springs. The combination of the slotted polypropylene back and the spring steel provides a supportive flexing back. Springs are nominal 4.5mm diameter chrome silicon valve spring wire. Integral molded handle on seat back makes it easy to roll chair anywhere. Flex-back design encourages movement, relaxation and enhanced circulation. Slats permit flexing; radiused back conforms to your back; contoured seat dissipates pressure points. No need to lift and stack these chairs. Just flip-up the seats and conveniently nest them for simplified storage or relocation. The legs are 1", 13-gauge high-strength steel tubing. All frame joints are welded. Casters are double wheels (60mm) of high-impact thermoplastic with high-impact plastic frame. Frame has baked-on electrostatically-applied 30 gloss epoxy powder coating .



Seat:



Locations:

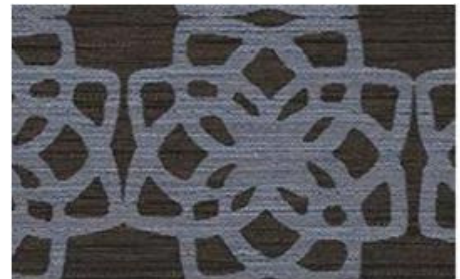
GW84	1
GW86	1

12620 - Chairs/Seating

Spec Item No.	Furniture Selection	Uph. Code	Qty	Description
CH-26Y	Bariatric Lounge Chair	Y	1	<p>As manufactured by Arcadia #4440-CO-90-SH2 Soleil Bariatric Settee, Fully Upholstered with Corian Arm Caps, White Oak Wood for Lower Portion of Arm Cap, Standard Glides</p> <p>Size: Overall - 34"w. x 26-1/2"d. x 34"h., 24-3/8"a.h.; 18"s.h.; Inside Seat Width - 30"; Inside Seat Depth - 18"</p> <p>Finish: Frame - #90 Metallic Silver; Corian - Designer White; Wood Lower Portion of Arm Cap - #18 Slate Grey White Oak</p> <p>Performance Specification: Metal seat frame construction ensures durability and allows in-field component replacement. Passive flex back motion provides long-term seated comfort. Arm cap features radiused edges for smooth surface contact; all styles are field replaceable. Clean-outs on every side, including between the seat and back. Enables crumbs and debris to fall through for maintenance ease. Wall-saver leg design. SCS Indoor Advantage Gold certified. Replaceable componentry. 750 lbs. maximum seat capacity.</p>



Back:



Seat:



Locations:

2E24 1

12620 - Chairs/Seating

Spec Item No.	Furniture Selection	Uph. Code	Qty	Description
CH-26KK	Bariatric Lounge Chair	KK	2	<p>As manufactured by Arcadia #4440-CO-90-SH2 Soleil Bariatric Settee, Fully Upholstered with Corian Arm Caps, White Oak Wood for Lower Portion of Arm Cap, Standard Glides</p> <p>Size: Overall - 34"w. x 26-1/2"d. x 34"h., 24-3/8"a.h.; 18"s.h.; Inside Seat Width - 30"; Inside Seat Depth - 18"</p> <p>Finish: Frame - #90 Metallic Silver; Corian - Designer White; Wood Lower Portion of Arm Cap - #18 Slate Grey White Oak</p> <p>Performance Specification: Metal seat frame construction ensures durability and allows in-field component replacement. Passive flex back motion provides long-term seated comfort. Arm cap features radiused edges for smooth surface contact; all styles are field replaceable. Clean-outs on every side, including between the seat and back. Enables crumbs and debris to fall through for maintenance ease. Wall-saver leg design. SCS Indoor Advantage Gold certified. Replaceable componentry. 750 lbs. maximum seat capacity.</p>



Back:



Seat:



Locations:

GW90A	1
3E10	1

12620 - Chairs/Seating

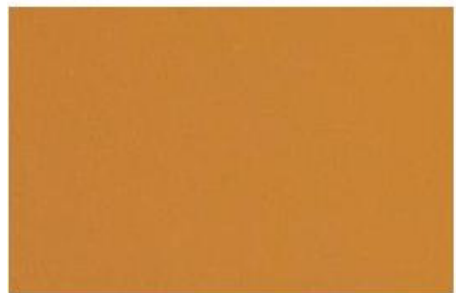
Spec Item No.	Furniture Selection	Uph. Code	Qty	Description
CH-26MM	Bariatric Lounge Chair	MM	4	<p>As manufactured by Arcadia #4440-CO-90-SH2 Soleil Bariatric Settee, Fully Upholstered with Corian Arm Caps, White Oak Wood for Lower Portion of Arm Cap, Standard Glides</p> <p>Size: Overall - 34"w. x 26-1/2"d. x 34"h., 24-3/8"a.h.; 18"s.h.; Inside Seat Width - 30"; Inside Seat Depth - 18"</p> <p>Finish: Frame - #90 Metallic Silver; Corian - Designer White; Wood Lower Portion of Arm Cap - #18 Slate Grey White Oak</p> <p>Performance Specification: Metal seat frame construction ensures durability and allows in-field component replacement. Passive flex back motion provides long-term seated comfort. Arm cap features radiused edges for smooth surface contact; all styles are field replaceable. Clean-outs on every side, including between the seat and back. Enables crumbs and debris to fall through for maintenance ease. Wall-saver leg design. SCS Indoor Advantage Gold certified. Replaceable componentry. 750 lbs. maximum seat capacity.</p>



Back:



Seat:



Locations:

1W91	2
2W91	2

12620 - Chairs/Seating

Spec Item No.	Furniture Selection	Uph. Code	Qty	Description
CH-26NN	Bariatric Lounge Chair	NN	2	<p>As manufactured by Arcadia #4440-CO-90-SH2 Soleil Bariatric Settee, Fully Upholstered with Corian Arm Caps, White Oak Wood for Lower Portion of Arm Cap, Standard Glides</p> <p>Size: Overall - 34"w. x 26-1/2"d. x 34"h., 24-3/8"a.h.; 18"s.h.; Inside Seat Width - 30"; Inside Seat Depth - 18"</p> <p>Finish: Frame - #90 Metallic Silver; Corian - Designer White; Wood Lower Portion of Arm Cap - #18 Slate Grey White Oak</p> <p>Performance Specification: Metal seat frame construction ensures durability and allows in-field component replacement. Passive flex back motion provides long-term seated comfort. Arm cap features radiused edges for smooth surface contact; all styles are field replaceable. Clean-outs on every side, including between the seat and back. Enables crumbs and debris to fall through for maintenance ease. Wall-saver leg design. SCS Indoor Advantage Gold certified. Replaceable componentry. 750 lbs. maximum seat capacity.</p>



Back:



Seat:



Locations:

1W11 2

12620 - Chairs/Seating

Spec				
Item	Furniture	Uph.		
No.	Selection	Code	Qty	Description
CH-27	NOT USED			

12620 - Chairs/Seating

Spec				
Item	Furniture	Uph.		
No.	Selection	Code	Qty	Description
CH-28	NOT USED			

12620 - Chairs/Seating

Spec Item No.	Furniture Selection	Uph. Code	Qty	Description
CH-29	Lounge Chair	O	8	As manufactured by Carolina Business Furniture #678-1-MGW Hide Lounge Chair, Fully Upholstered, Clean-thru Design, Spiny Seat, Tapered Beech Leg and Tack-in Non-marring Glide

Size: Overall - 33-1/2"w. x 33-1/2"d. x 45"h.

Seat - 21"s.w., x 21"s.d., x 19-1/2"s.h.

Finish: Leg - English Walnut

Performance Specification: Hide lounge chair offers grand silhouettes that take comfort to a new level, offers sophisticated solution for providing semi-private areas for waiting. Chair to have a built-in clean-out space between seat and back, standard. Lifetime warranty.

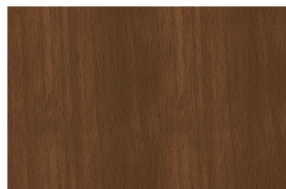


Pillow not included.

Remainder of Chair:



Seat:



Locations:

1W01

8

12620 - Chairs/Seating

Spec Item No.	Furniture Selection	Uph. Code	Qty	Description
S-01N	Two-Seat Sofa	N	3	<p>As manufactured by Carolina Business Furniture #472-2-MWS-90 Serony Fully Upholstered Loveseat with Clean-Thru Design, Wall Saver Legs, Tight Cushion, Solid Surface Arm Caps, Non-Marring Adjustable Glides, and Powdercoat Frame Finish</p> <p>Size: Overall - 49"w. x 25-1/2"d. x 31"h. Seat - 46"s.w. x 20"s.d., x 18"s.h.; 25"a.h. Seat to Top of Back - 13"</p> <p>Finish: Corian Arm Caps - #MWS Modern White; Frame - #90 Metallic Silver</p> <p>Performance Specification: SCS Indoor Advantage Gold Certified. Limited Lifetime Warranty.</p>



Back:



Seat:



Locations:

3E17	1
3E19	1
3E21	1

12620 - Chairs/Seating

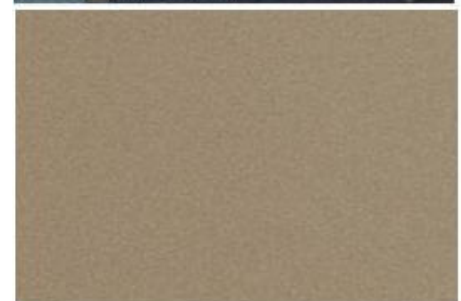
Spec Item No.	Furniture Selection	Uph. Code	Qty	Description
S-01II	Two-Seat Sofa	II	5	<p>As manufactured by Carolina Business Furniture #472-2-MWS-90 Serony Fully Upholstered Loveseat with Clean-Thru Design, Wall Saver Legs, Tight Cushion, Solid Surface Arm Caps, Non-Marring Adjustable Glides, and Powdercoat Frame Finish</p> <p>Size: Overall - 49"w. x 25-1/2"d. x 31"h. Seat - 46"s.w. x 20"s.d., x 18"s.h.; 25"a.h. Seat to Top of Back - 13"</p> <p>Finish: Corian Arm Caps - #MWS Modern White; Frame - #90 Metallic Silver</p> <p>Performance Specification: SCS Indoor Advantage Gold Certified. Limited Lifetime Warranty.</p>



Back:



Seat:



Locations:

1W24	2
2W24	2
5W05	1

12620 - Chairs/Seating

Spec Item No.	Furniture Selection	Uph. Code	Qty	Description
S-01LL	Two-Seat Sofa	LL	5	<p>As manufactured by Carolina Business Furniture #472-2-MWS-90 Serony Fully Upholstered Loveseat with Clean-Thru Design, Wall Saver Legs, Tight Cushion, Solid Surface Arm Caps, Non-Marring Adjustable Glides, and Powdercoat Frame Finish</p> <p>Size: Overall - 49"w. x 25-1/2"d. x 31"h. Seat - 46"s.w. x 20"s.d., x 18"s.h.; 25"a.h. Seat to Top of Back - 13"</p> <p>Finish: Corian Arm Caps - #MWS Modern White; Frame - #90 Metallic Silver</p> <p>Performance Specification: SCS Indoor Advantage Gold Certified. Limited Lifetime Warranty.</p>



Back:



Seat:



Locations:

1E37	1
2W70	2
1W69	2

12620 - Chairs/Seating

Spec Item No.	Furniture Selection	Uph. Code	Qty	Description
S-02	Three- Seat Sofa	II	3	<p>As manufactured by Carolina Business Furniture #472-3-MWS-90 Serony Fully Upholstered 3-Seat Sofa with Clean-Thru Design, Wall Saver Legs, Tight Cushion, Solid Surface Arm Caps, Non-Marring Adjustable Glides, and Powdercoat Frame Finish</p> <p>Size: Overall - 73"w. x 25-1/2"d. x 31"h. Seat - 69"s.w. x 20"s.d., x 18"s.h.; 25"a.h. Seat to Top of Back - 13"</p> <p>Finish: Corian Arm Caps - #MWS Modern White; Frame - #90 Metallic Silver</p> <p>Performance Specification: SCS Indoor Advantage Gold Certified. Limited Lifetime Warranty.</p>



Back:



Seat:



Locations:

1W24	1
2W24	1
5W05	1

12620 - Chairs/Seating

Spec Item No.	Furniture Selection	Uph. Code	Qty	Description
S-03	Two-Seat Sofa with Arms	NN	3	<p>As manufactured by Encore #6280-90-VCT1-CL4 Clipse Love Seat with Platform Base and (4) Fixed Legs, with Modified Seat to Provide Clean Out, Fully Upholstered, on Glides</p> <p>Size: Overall - 58"w. x 29"d. x 29-1/2"h.; 17-1/2"s.h.; Seat - 49"w. x 20"d.; Back - 50"w. x 15"h.</p> <p>Finish: Legs - #90 Metallic Silver</p> <p>Performance Specification: 700 lb. weight capacity. VCT tile glides are for hard surface flooring. SCS Outdoor Advantage Bold Certified.</p>



Back:



Seat:



Locations:

2E28	1
2E20	1
2W50	1

12620 - Chairs/Seating

Spec Item No.	Furniture Selection	Uph. Code	Qty	Description
S-04V	Three- Seat Sofa with Arms	V	1	<p>As manufactured by Encore #6290-90-VCT1-CL4 Clipse Sofa with Platform Base and (4) Fixed Legs, with Modified Seat to Provide Clean Out, Fully Upholstered, on Glides</p> <p>Size: Overall - 81-1/2"w. x 29"d. x 29-1/2"h.; 17-1/2"s.h.; Seat - 73"w. x 20"d.; Back - 74"w. x 15"h.</p> <p>Finish: Legs - #90 Metallic Silver</p> <p>Performance Specification: 700 lb. weight capacity. VCT tile glides are for hard surface flooring. SCS Outdoor Advantage Bold Certified.</p>



Back:



Seat:



Locations:

4H10 1

12620 - Chairs/Seating

Spec Item No.	Furniture Selection	Uph. Code	Qty	Description
S-04AA	Three- Seat Sofa with Arms	AA	2	<p>As manufactured by Encore #6290-90-VCT1-CL4 Clipse Sofa with Platform Base and (4) Fixed Legs, with Modified Seat to Provide Clean Out, Fully Upholstered, on Glides</p> <p>Size: Overall - 81-1/2"w. x 29"d. x 29-1/2"h.; 17-1/2"s.h.; Seat - 73"w. x 20"d.; Back - 74"w. x 15"h.</p> <p>Finish: Legs - #90 Metallic Silver</p> <p>Performance Specification: 700 lb. weight capacity. VCT tile glides are for hard surface flooring. SCS Outdoor Advantage Bold Certified.</p>



Back:





Seat:



Locations:

3W24 2

12620 - Chairs/Seating

Spec Item No.	Furniture Selection	Uph. Code	Qty	Description
S-05	Serpentine Lounge Seating with Tables	J	1	As manufactured by Carolina Business Furniture Each to Consist of:
			(3)	#5110-30-I-O Basil 30 Degree Inside Wedge Middle Table, High Pressure Laminate in Natural Steam Wash Finish, No Legs Size: 34-3/4"w. x 25-3/4"d. x 2"h.
			(2)	#5110-60I-E1W-E1W-D1E Basil 60 Degree Inside Wedge Fully Upholstered Loveseat with Left Facing Arm in Brushed Aluminum with Black Polyurethane Arm Cap and Metal Leg Size: Outside - 73"w. x 33-3/4"d. x 32"h.; Seat - 42"sw. x 20"sd. x 18"sh.; Seat to Top of Back - 13"; Arm - 2-1/4"w. x 21-1/4"d. x 3/4"h.; Arm Height - 25-1/4"a.h.
			(2)	#5110-60I-D1E Basil 60 Degree Inside Wedge Fully Upholstered Armless Loveseat and Metal Leg Size: Outside - 73"w. x 33-3/4"d. x 32"h.; Seat - 42"sw. x 20"sd. x 18"sh.; Seat to Top of Back - 13"
				Finish: Table - Natural Steam Wash Arm Cap - Standard Black Arm & Leg - Brushed Aluminum Finish on Metal Arms
				Performance Specification: All seating has clean-thru design, tight cushion, and double top stitch in center of seat and back. All items on non-marring adjustable glides. Poly arm caps included on metal arm. Some field installation required.
				Back: 
				Seat: 

Locations:
1W01 1

12620 - Chairs/Seating

Spec Item No.	Furniture Selection	Uph. Code	Qty	Description
ST-01H	Exam Room Stool	H	5	As manufactured by Humanscale #F400TK302--S--- Freedom Pony Saddle Stool, Height Adjustable Pneumatic Cylinder, Soft Casters Size: Base - 22"dia.; 16"-21"h.; 16"s.w. Finish: Frame - Titanium Performance Specification: Five year warranty on cushions and textiles, and 15 year 24/7 warranty on cylinders, casters and other mechanical add- ons.



Seat:



Locations:

1W29	1
1W31	1
1W33	1
5W69	2

12620 - Chairs/Seating

Spec Item No.	Furniture Selection	Uph. Code	Qty	Description
ST-01I	Exam Room Stool	I	6	<p>As manufactured by Humanscale #F400TK302--S--- Freedom Pony Saddle Stool, Height Adjustable Pneumatic Cylinder, Soft Casters</p> <p>Size: Base - 22"dia.; 16"-21"h.; 16"s.w.</p> <p>Finish: Frame - Titanium</p> <p>Performance Specification: Five year warranty on cushions and textiles, and 15 year 24/7 warranty on cylinders, casters and other mechanical add- ons.</p>



Seat:



Locations:

3E20	1	3E28	1
3E22	1	3E30	1
3E24	1	3E32	1

12620 - Chairs/Seating

Spec

Item No.	Furniture Selection	Uph. Code	Qty	Description
ST-02	Lab Stool with Back, Arms and Foot Ring	See Finish	17	As manufactured by Cramer #RPMM7-New Version Rhino Poly (Smooth)-10-T-X RhinoPlus Mid-Height Lab Stool with Back, Hard Surface Single Wheel Caster with 3" Diameter, High Performance Flat Surface Footring, Fully Articulating Arm with Slide (3 locking pivot positions and 2.5" of travel front to back), 7-Way Adjustment Mechanism (Seat Height, Back Height, Back Angle, Seat Angle, Chair Tilt, Forward Tilt Limiter, Seat Depth), and the New Version of Rhino Poly (Smooth) Upholstered Seat and Back



Back &
Seat:



Shown textured; item specified
to have smooth finish

Size: Overall - 33-1/2"w. x 27-12"d. x 45-1/4"h.; 20"s.w., 20-3/4" - 28-1/4"s.h.

Finish: Seat & Back Upholstery - #225 Wood; Frame and Trim - Black

Performance Specification: Patented* RhinoPlus combination of urethane and molded foam provides a comfortable seat; resists punctures, abrasions, tears, and virtually all spills; and cleans easily with bleach or ethanol; seamless molded cover keeps out dirt and impurities. The steel inner structure stands up to wear-and-tear throughout multiple shifts. Contoured molded seat with waterfall edge ensures 24-hour comfort. Dynamic range of adjustments support the full range of seated postures from active forward-leaning to recline. High performance sure-lock footring with 20" diameter (on stool heights). Supports up to 350 lbs. 10-Year, Three-Shift Warranty. RhinoPlus has SCS Indoor Advantage Gold Certification and may help contribute toward LEED certification. 26" fiberglass-reinforced nylon base. 16-gauge steel seat pan. High resiliency flame-retardant 3" thick seat foam with a density of 2.4 lbs. per cubic foot. Rhino urethane properties: tear strength of 17.7 kgF, puncture resistance of 9.9 kgF, stretch of 660%, abrasion resistance of 25,000, and a Ross Flex rating of 150,000 flexes. Class 4 pneumatic cylinder: 1.12" diameter with a 17-4 taper top end for maximum strength. Heat-bonded powder coat finish. Material Content: 100% urethane, PVC free; Ross Flex Rating: -5° C < 25% Cut Growth, 150,000 Flexes; Finish: Non-slip; Properties: Anti-bacterial, Anti-microbial, Soil & Stain Resistant, Reduced Environmental Impact.

Locations:

GW03B	3	GW67	1
GW07	3	GW87	5
GW21	4	GW88	1

12620 - Chairs/Seating

Spec Item No.	Furniture Selection	Uph. Code	Qty	Description
ST-03	Lab Stool with Back Footring, and without Arms	See Finish	52	<p>As manufactured by Cramer</p> <p>#RPM7-New Version Rhino Poly (Smooth)-10-X RhinoPlus Mid-Height Lab Stool with Back, Hard Surface Single Wheel Caster with 3" Diameter, High Performance Flat Surface Footring, Armless, 7-Way Adjustment Mechanism (Seat Height, Back Height, Back Angle, Seat Angle, Chair Tilt, Forward Tilt Limiter, Seat Depth), and the New Version of Rhino Poly (Smooth) Upholstered Seat and Back</p> <p>Size: Overall - 27-1/2"w. x 27-12"d. x 45-1/4"h.; 20"s.w., 20-3/4" - 28-1/4"s.h.</p> <p>Finish: Seat & Back Upholstery - #225 Wood; Frame and Trim - Black</p> <p>Performance Specification: Patented* RhinoPlus combination of urethane and molded foam provides a comfortable seat; resists punctures, abrasions, tears, and virtually all spills; and cleans easily with bleach or ethanol; seamless molded cover keeps out dirt and impurities. The steel inner structure stands up to wear-and-tear throughout multiple shifts. Contoured molded seat with waterfall edge ensures 24-hour comfort. Dynamic range of adjustments support the full range of seated postures from active forward-leaning to recline. High performance sure-lock footring with 20" diameter (on stool heights). Supports up to 350 lbs. 10-Year, Three-Shift Warranty. RhinoPlus has SCS Indoor Advantage Gold Certification and may help contribute toward LEED certification. 26" fiberglass-reinforced nylon base. 16-gauge steel seat pan. High resiliency flame-retardant 3" thick seat foam with a density of 2.4 lbs. per cubic foot. Rhino urethane properties: tear strength of 17.7 kgF, puncture resistance of 9.9 kgF, stretch of 660%, abrasion resistance of 25,000, and a Ross Flex rating of 150,000 flexes. Class 4 pneumatic cylinder: 1.12" diameter with a 17-4 taper top end for maximum strength. Heat-bonded powder coat finish. Material Content: 100% urethane, PVC free; Ross Flex Rating: -5° C < 25% Cut Growth, 150,000 Flexes; Finish: Non-slip; Properties: Anti-bacterial, Anti-microbial, Soil & Stain Resistant, Reduced Environmental Impact.</p>



Back & Seat:



Shown textured; item specified to have smooth finish

Locations:

1W25A	1	3W13	1	3W85	3
3W09A	6	3W21	6	3W85A	3
3W09	6	3W21A	6	3W85B	1
3W10	1	3W25	6	3W86	2
3W11	1	3W25A	6	5E20	2
				GW15B	1