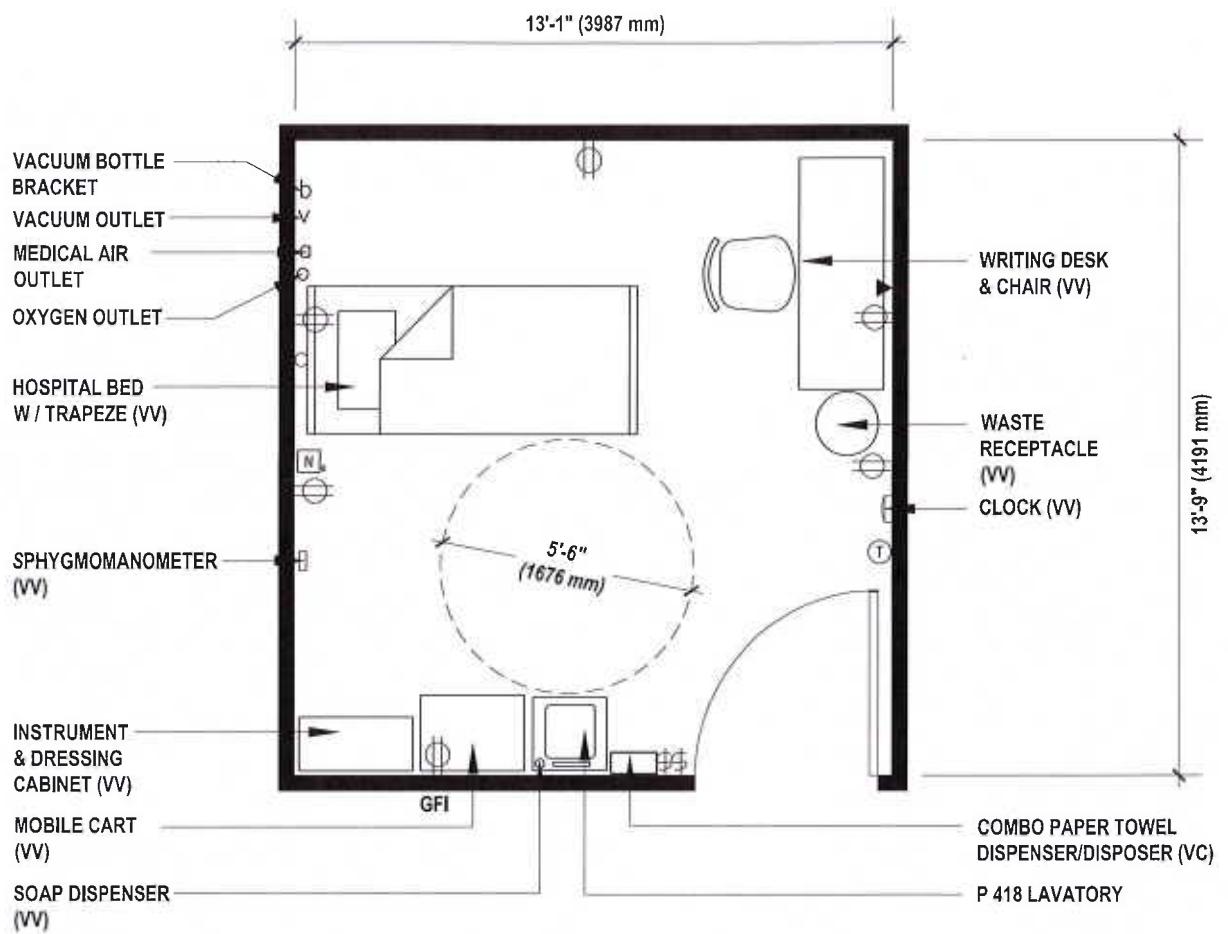
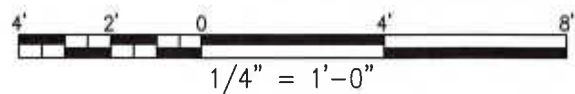


22. Urodynamics: Exam / Treatment Room (EXUD1)

Floor Plan

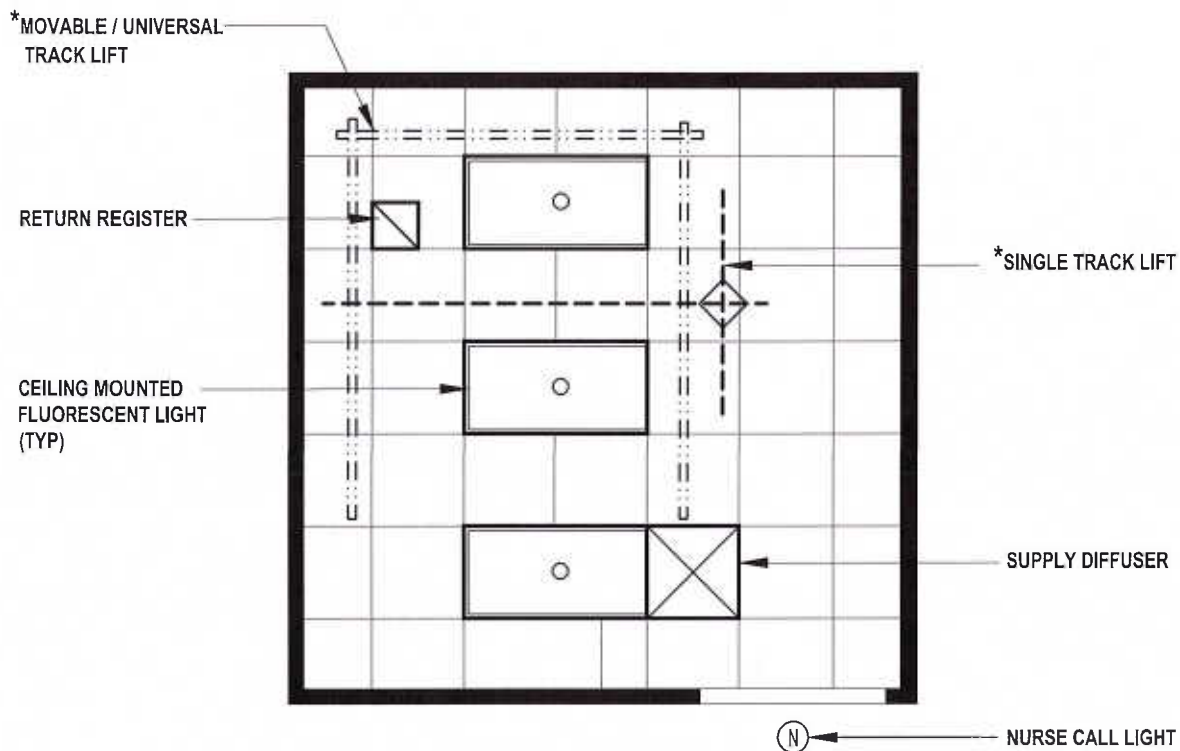


180 NSF (16.8 NSM)



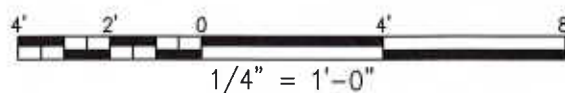
22. Urodynamics: Exam / Treatment Room (EXUD1)

Reflected Ceiling Plan



NOTE: * BOTH SINGLE TRACK & MOVABLE OR UNIVERSAL TRACK LIFT SYSTEMS ARE INDICATED IN THE PLAN AS AN OPTION. THE TYPE OF LIFT TO BE USED ON SPECIFIC PROJECT IS TO BE SPECIFIED / SELECTED BY THE VA CENTER OR STATION. LOCATIONS OF SINGLE TRACK LIFT RAILS AND LIGHTING FIXTURES MUST BE COORDINATED BY PROJECT DESIGNER

180 NSF (16.8 NSM)



22. Urodynamics: Exam/Treatment Room (EXUD1)

Space Requirement:

180 NSF (16.8 NSM)

Architectural:

Floor Finish:	Vinyl Composition Tile
Base:	Vinyl
Wall Finish:	Gypsum Wallboard/Paint
Ceiling:	Gypsum Wallboard or Clipped down ACT w/ Smooth, Washable Surface
Ceiling Height:	9'-0" (2743 mm)
Noise (STC Rating):	40
Slab Depression:	None
Special Construction:	-
Hardware:	53
Doors:	4'-0" (1219 mm) x 7'-0" (2133 mm) wood or metal
Windows:	None Required

HVAC:

Temperature/Humidity:

Summer: 72°F (22°C) @60%RH

Winter: 82°F (28°C) @20%RH

Min. Air Changes/Hour: 6 ACH

Pressure: Neutral (0)

Max Noise Criteria: 35

Electrical:

Lighting Levels:

Two-Level Illumination:

High: 100 fc

Low: 50 fc

Emergency Power:

One Ceiling Light

One Receptacle (near bed)

Nurse Call

Medical Gases

22. Urodynamics: Exam/Treatment Room (EXUD1)

Equipment Table:

SYMBOL	QUANTITY				AI	DESCRIPTION
	A	B	C	D		
	1	1			CC	LAVATORY, ELECTRONIC SENSOR CONTROL FAUCET WITH RIGID GOOSENECK SPOUT, 20" X 18" & 3-1/2" APRON (PG-18-1, MCS 15450)
	1	1			CC	DISPENSER, SOAP WITH FOOT CONTROL, WALL MOUNTED OVER SINK (PG-18-1, MCS 10800)
	1	1			CC	DISPENSER, PAPER TOWEL AND DISPOSAL COMBINATION UNITS (PG-18-1, MCS 10800)
	1	1			VV	HOSPITAL BED, ELECTRONICALLY ADJUSTABLE, TRAPEZE OVERHEAD (PG-18-1, MCS 05500)
	1	1			VV	CABINET, INSTRUMENT AND DRESSING, APPROX. 30"W X 16"D X 60"H
	1	1			VV	CART, MOBILE, 18"W X 30"L X 36"H
	4	4			VV	ILLUMINATOR, X-RAY FILM, WALL SURFACE MOUNTED, 120 VOLT, 150 WATTS, INDIVIDUAL SWITCH FOR TWO 14" X 17" RADIOGRAPHS, 31"W X 20"H
	1	1			CC	RECEPTACLE, ELECTRICAL, DUPLEX, 120 VOLT, 20 AMP, ON WALL, 48" ABOVE FINISHED FLOOR FOR ABOVE EQUIPMENT (PG-18-1, MCS 16140)
	1	1			CC	CEILING MOUNTED LIFT WITH TRACK
	1	1			CC	OUTLET, WALL OXYGEN (PG-18-1, MCS 15312) PG-18-3, TOPIC 1, CODES AND STANDARDS
	1	1			CC	OUTLET, WALL, COMPRESSED AIR, (PG-18-1, MCS 15311) PG-18-3, TOPIC 1, CODES AND STANDARDS
	1	1			CC	OUTLET, WALL, VACUUM (PG-18-1, MCS 15313) PG-18-3, TOPIC 1, CODES AND STANDARDS
	1	1			CC	BRACKET, VACUUM BOTTLE SLIDE, 4 9/16" X 4 1/2" (PG-18-1, MCS 15313)
	1	1			CC	NURSE CALL-EMERGENCY STATION WITH CORRIDOR SIGNAL LIGHT CONNECTED TO NEAREST NURSE CONTROL STATION (PG-18-1, MCS 16761)
	AR	AR			CC	RECEPTACLE, ELECTRICAL, DUPLEX GFI, 120 VOLT, 20 AMP (PG-18-1, MCS 16140)
	1	1			VV	DESK, WITH DRAWERS AND BOOKSHELF, APPROX. 24"D X 36"L X 29"H
	1	1			VV	CHAIR, ROTARY, WITHOUT ARMS
	1	1			VV	SPHYGMOMANOMETER, WALL HUNG
	1	1			VV	RECEPTACLE, WASTE 13" DIAMETER
	AR	AR			CC	LIGHT FLUORESCENT GENERAL LIGHTING (PG-18-1, MCS 16510)
	AR	AR			VV	CLOCK, BATTERY

TABLE 3.22
URODYNAMICS: EXAM/TREATMENT ROOM (EXUD1)