

# VA GAINESVILLE ICU

## CLIENT DRAWING APPROVAL

- REVIEW OF THE PATIENT ROOMS (20 TOTAL)
- APPROVAL OF THE LAYOUT (9 TOTAL)

CLIENT APPROVAL: \_\_\_\_\_

DATE: \_\_\_\_\_

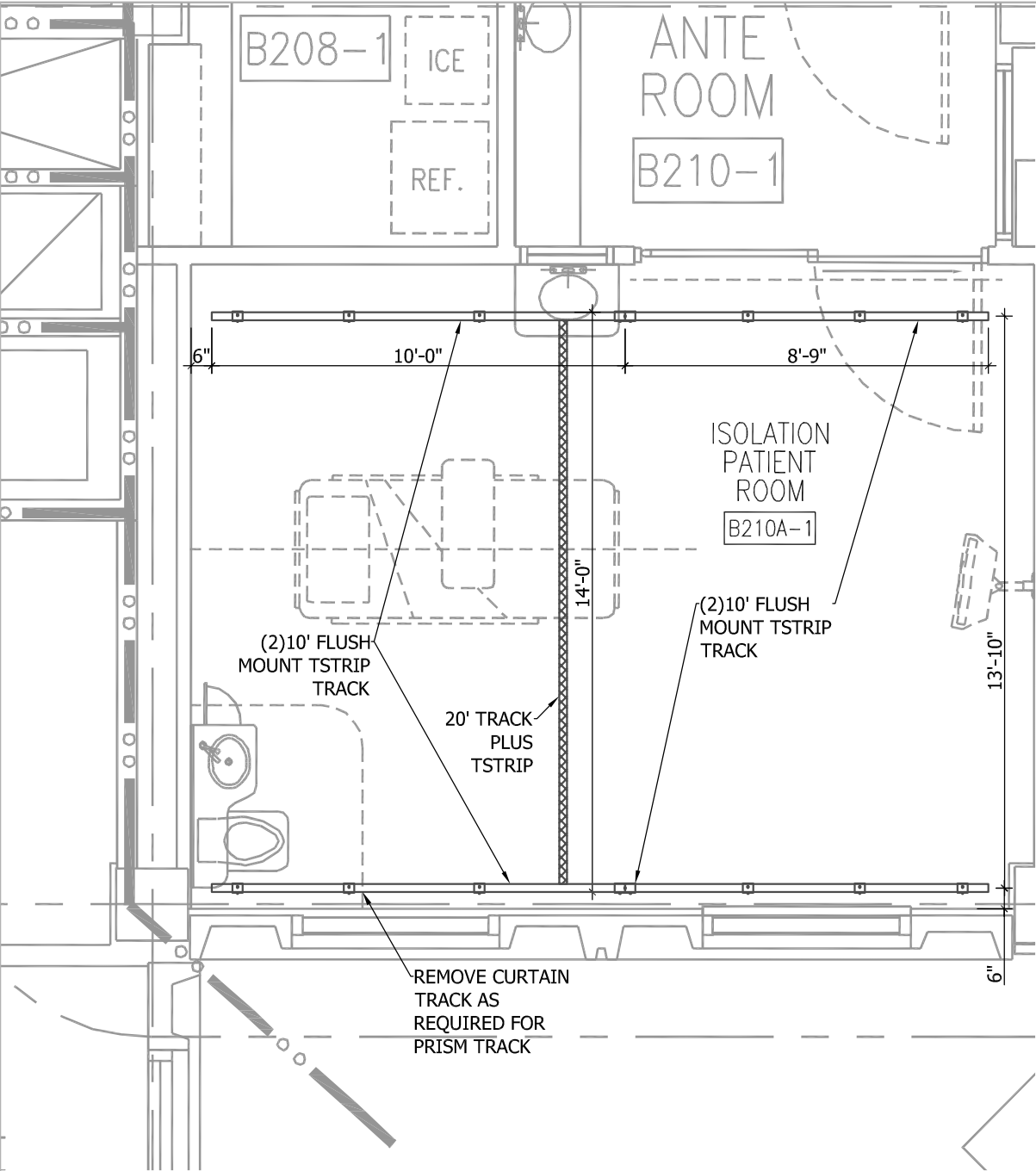
## INITIALS


## COVER SHEET

## TRACK LAYOUT

REPRESENTATIVE: SD	DRAWN BY: BJ	
DATE: 3/8/17	SHEET: 1 OF 10	

INFORMATION ON THIS DOCUMENT IS PROPRIETARY TO PRISM MEDICAL AND SHALL NOT BE COPIED, REPRODUCED, USED OR DISCLOSED IN WHOLE OR IN PART WITHOUT WRITTEN CONSENT OF PRISM MEDICAL.




**TYPICAL OF 1**  
ROOM: B210A-1

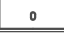
CLIENT APPROVAL: \_\_\_\_\_ DATE: \_\_\_\_\_


CLIENT HAS REVIEWED INFORMATION CONTAINED IN THESE DRAWINGS AND CONFIRMS THAT THE LAYOUT AND DIMENSIONS ARE ACCURATE AND APPROVES THEM TO BE INSTALLED AS INDICATED.

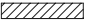
**INFORMATION ON THIS DOCUMENT IS PROPRIETARY TO PRISM MEDICAL AND SHALL NOT BE COPIED, REPRODUCED, USED OR DISCLOSED IN WHOLE OR IN PART WITHOUT WRITTEN CONSENT OF PRISM MEDICAL.**


**LEGEND**


 **3" BRACKET**


 **6" BRACKET**


 **STANDARD TRACK**

 **SUPER TRACK/TRACKPLUS**

 **CHARGING STATION**

 **QUICKFIT 90° TURNTABLE**

 **MULTIPORT TURNTABLE**


 **TRANSITION GATE**

NOTE: The brackets in the above legend indicate the recommended locations for lateral bracing points for a suspended track system.

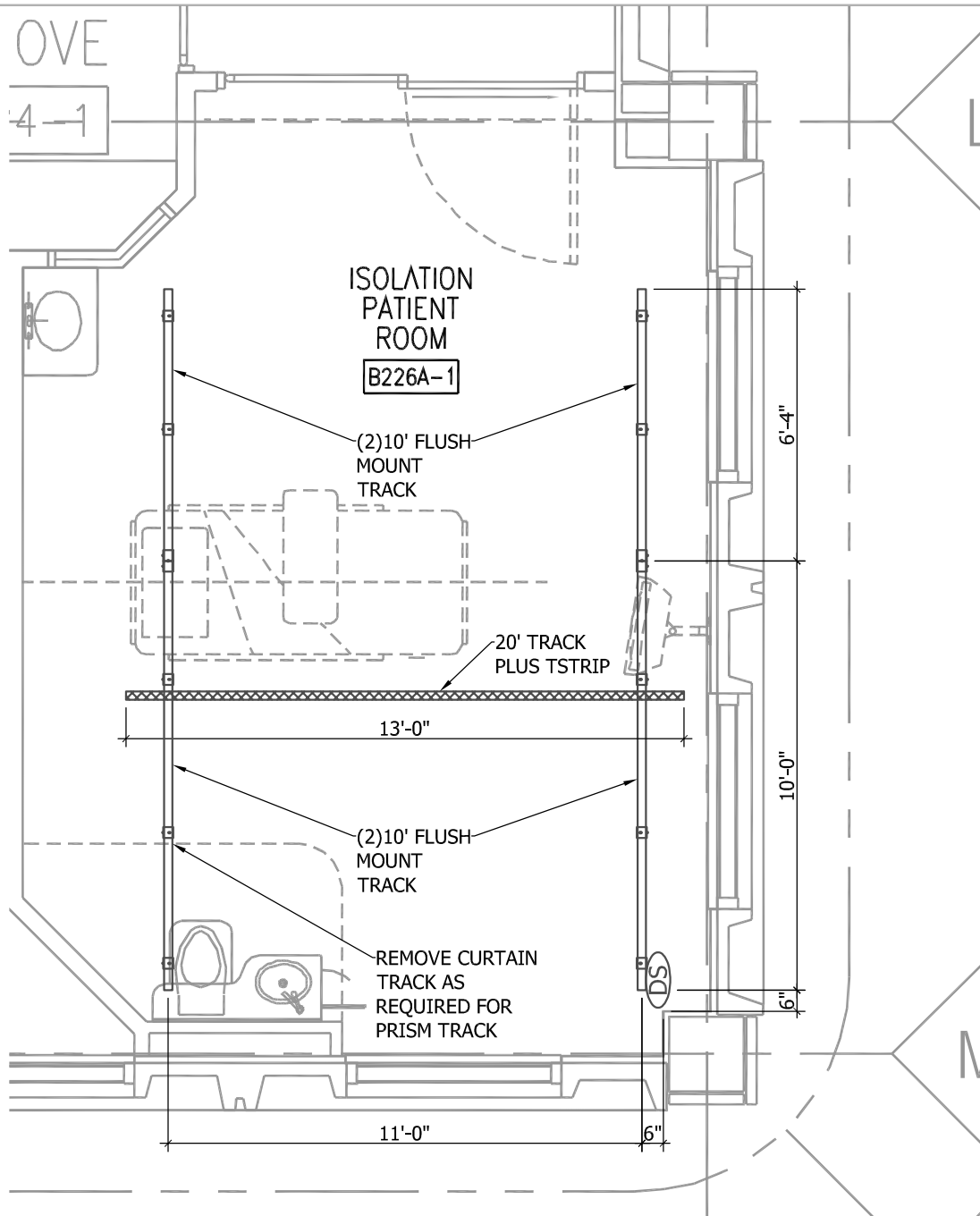
**VA GAINESVILLE  
ICU**

**TYPICAL BARIATRIC PATIENT ROOM  
A**

REVISION	DATE



DRAWN BY: BJ	DATE: 3/8/17	SCALE: 1/4" = 1'	SHEET: 2 OF 10
-----------------	-----------------	---------------------	-------------------



## LEGEND



3" BRACKET



6" BRACKET



STANDARD TRACK



SUPER TRACK/TRACKPLUS



CHARGING STATION



QUICKFIT 90° TURNTABLE



MULTIPORT TURNTABLE



TRANSITION GATE

NOTE: The brackets in the above legend indicate the recommended locations for lateral bracing points for a suspended track system.

## VA GAINESVILLE ICU

## TYPICAL BARIATRIC PATIENT ROOM B

### TYPICAL OF 1 ROOM: B226A-1

CLIENT APPROVAL: \_\_\_\_\_ DATE: \_\_\_\_\_

CLIENT HAS REVIEWED INFORMATION CONTAINED IN THESE DRAWINGS AND CONFIRMS THAT THE LAYOUT AND DIMENSIONS ARE ACCURATE AND APPROVES THEM TO BE INSTALLED AS INDICATED.

INFORMATION ON THIS DOCUMENT IS PROPRIETARY TO PRISM MEDICAL AND SHALL NOT BE COPIED, REPRODUCED, USED OR DISCLOSED IN WHOLE OR IN PART WITHOUT WRITTEN CONSENT OF PRISM MEDICAL.

REVISION

DATE

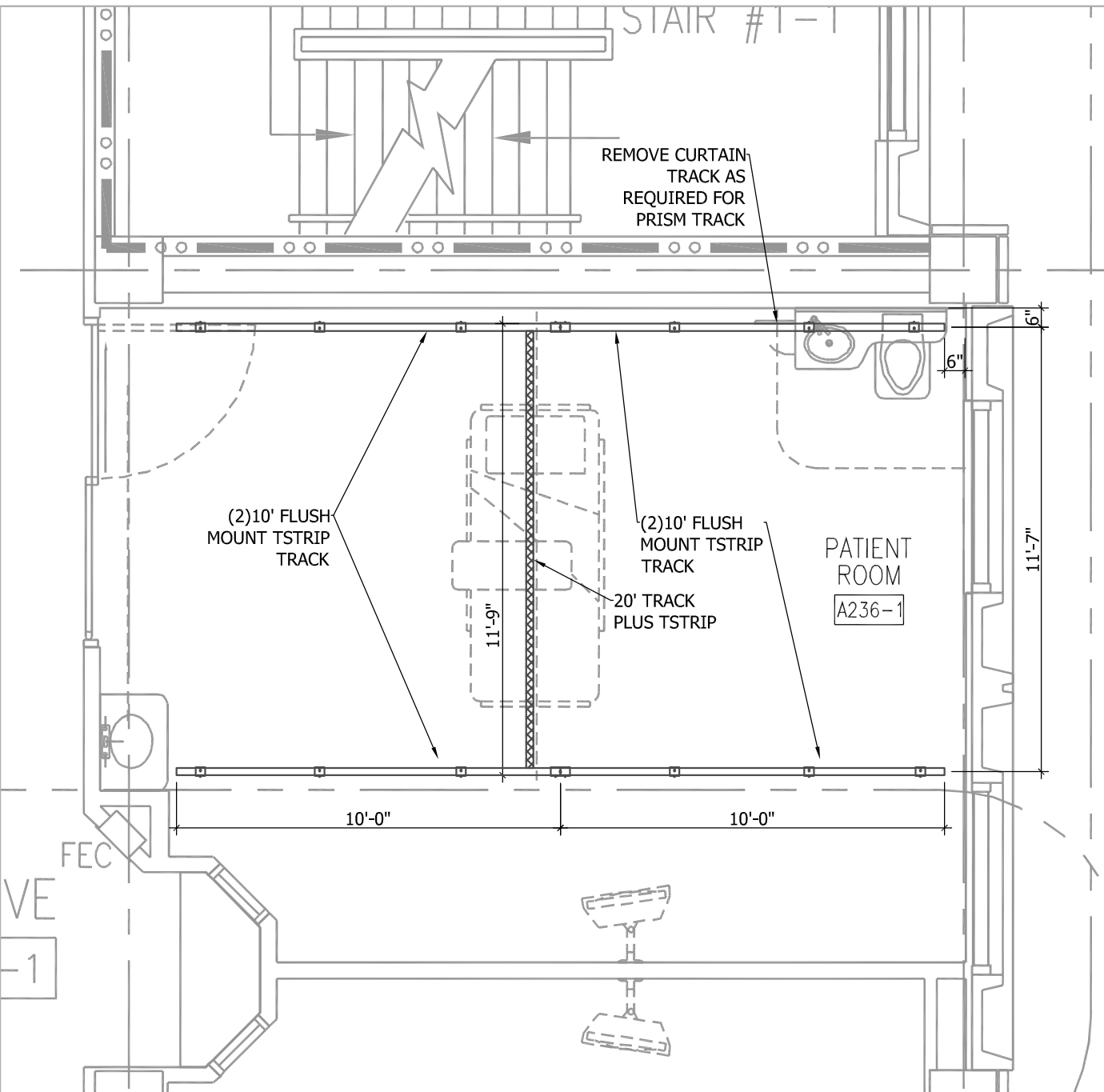
DRAWN BY:  
BJ

DATE:  
3/8/17



SCALE:  
1/4" = 1'

SHEET:  
3 OF 10



**LEGEND**

- 3" BRACKET**
- 6" BRACKET**
- STANDARD TRACK**
- SUPER TRACK/TRACKPLUS**
- CHARGING STATION**
- QUICKFIT 90° TURNTABLE**
- MULTIPORT TURNTABLE**
- TRANSITION GATE**

NOTE: The brackets in the above legend indicate the recommended locations for lateral bracing points for a suspended track system.

**VA GAINESVILLE  
ICU**

**TYPICAL STANDARD ROOM A**

**TYPICAL OF 3**  
ROOMS: A236-1, A244-1, B214-1

CLIENT APPROVAL: \_\_\_\_\_ DATE: \_\_\_\_\_

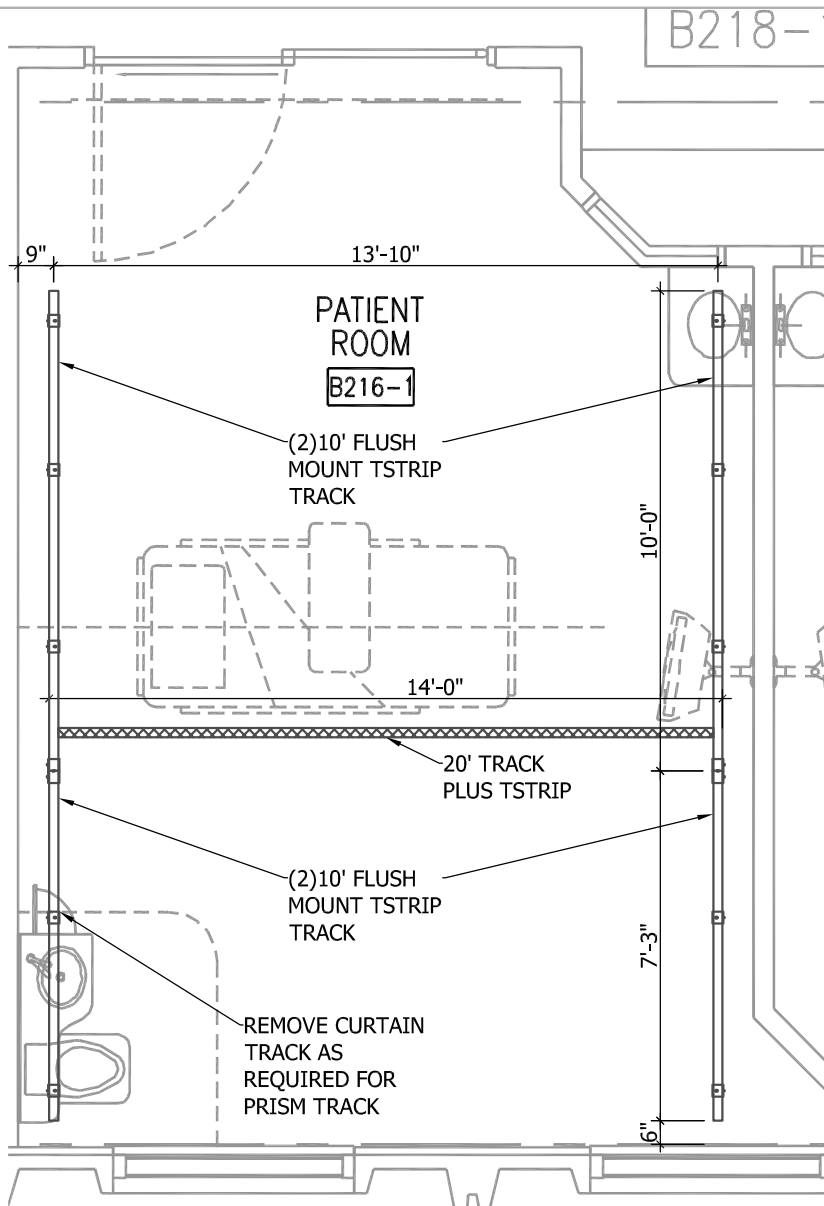
CLIENT HAS REVIEWED INFORMATION CONTAINED IN THESE DRAWINGS AND CONFIRMS THAT THE LAYOUT AND DIMENSIONS ARE ACCURATE AND APPROVES THEM TO BE INSTALLED AS INDICATED.

INFORMATION ON THIS DOCUMENT IS PROPRIETARY TO PRISM MEDICAL AND SHALL NOT BE COPIED, REPRODUCED, USED OR DISCLOSED IN WHOLE OR IN PART WITHOUT WRITTEN CONSENT OF PRISM MEDICAL.

REVISION	DATE



DRAWN BY: BJ	DATE: 3/8/17	SCALE: 1/4" = 1'	SHEET: 4 OF 10
-----------------	-----------------	---------------------	-------------------



## LEGEND



3" BRACKET



6" BRACKET



STANDARD TRACK



SUPER TRACK/TRACKPLUS



CHARGING STATION



QUICKFIT 90° TURNTABLE



MULTIPORT TURNTABLE



TRANSITION GATE

NOTE: The brackets in the above legend indicate the recommended locations for lateral bracing points for a suspended track system.

**VA GAINESVILLE  
ICU**

## TYPICAL STANDARD ROOM B

REVISION

DATE



DRAWN BY:  
BJ

DATE:  
3/8/17

SCALE:  
1/4" = 1'

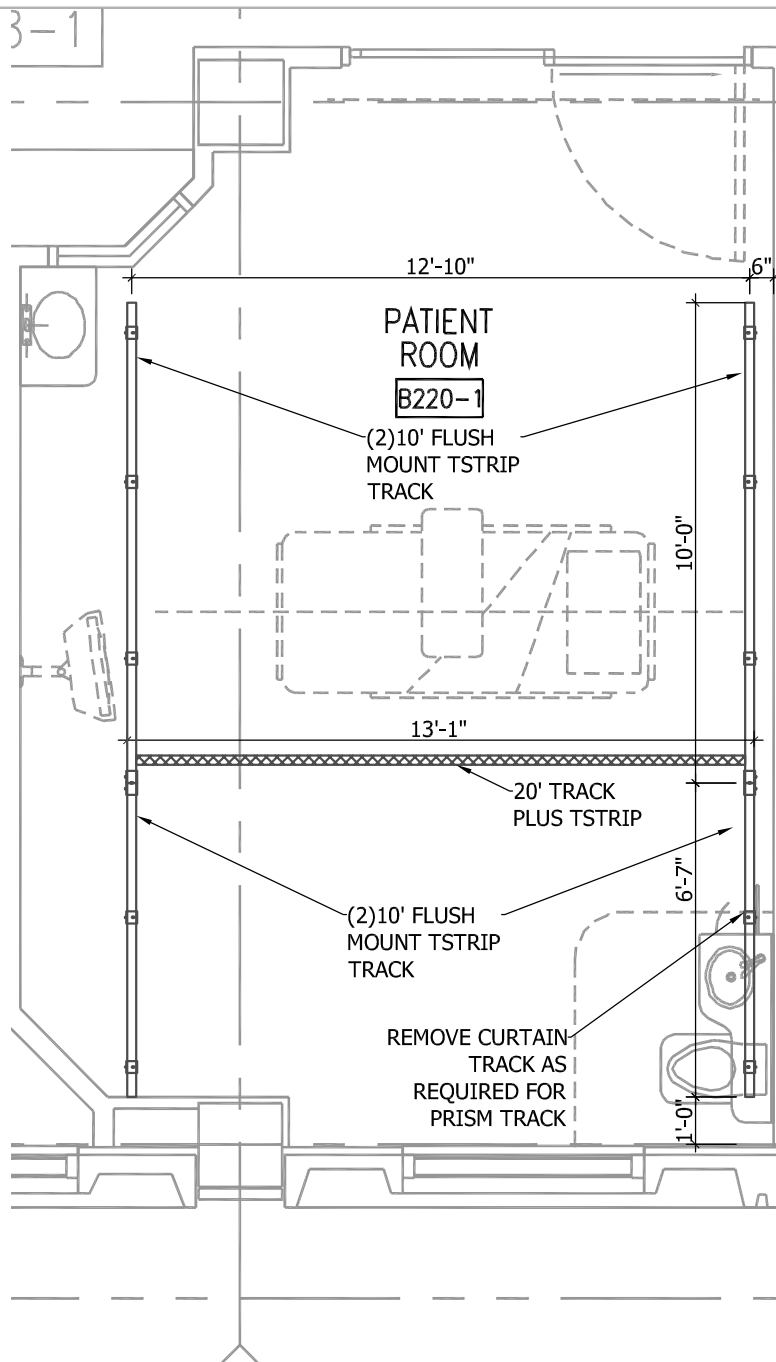
SHEET:  
5 OF 10

**TYPICAL OF 2**  
ROOMS: B216-1, B221-1

CLIENT APPROVAL: \_\_\_\_\_ DATE: \_\_\_\_\_

CLIENT HAS REVIEWED INFORMATION CONTAINED IN THESE DRAWINGS AND CONFIRMS THAT THE LAYOUT AND DIMENSIONS ARE ACCURATE AND APPROVES THEM TO BE INSTALLED AS INDICATED.

**INFORMATION ON THIS DOCUMENT IS PROPRIETARY TO PRISM MEDICAL AND SHALL NOT BE COPIED, REPRODUCED, USED OR DISCLOSED IN WHOLE OR IN PART WITHOUT WRITTEN CONSENT OF PRISM MEDICAL.**



## LEGEND



3" BRACKET



6" BRACKET



STANDARD TRACK



SUPER TRACK/TRACKPLUS



CHARGING STATION



QUICKFIT 90° TURNTABLE



MULTIPORT TURNTABLE



TRANSITION GATE

NOTE: The brackets in the above legend indicate the recommended locations for lateral bracing points for a suspended track system.

## VA GAINESVILLE ICU

## TYPICAL STANDARD ROOM C

REVISION

DATE



DRAWN BY:  
BJ

DATE:  
3/8/17

SCALE:  
1/4" = 1'

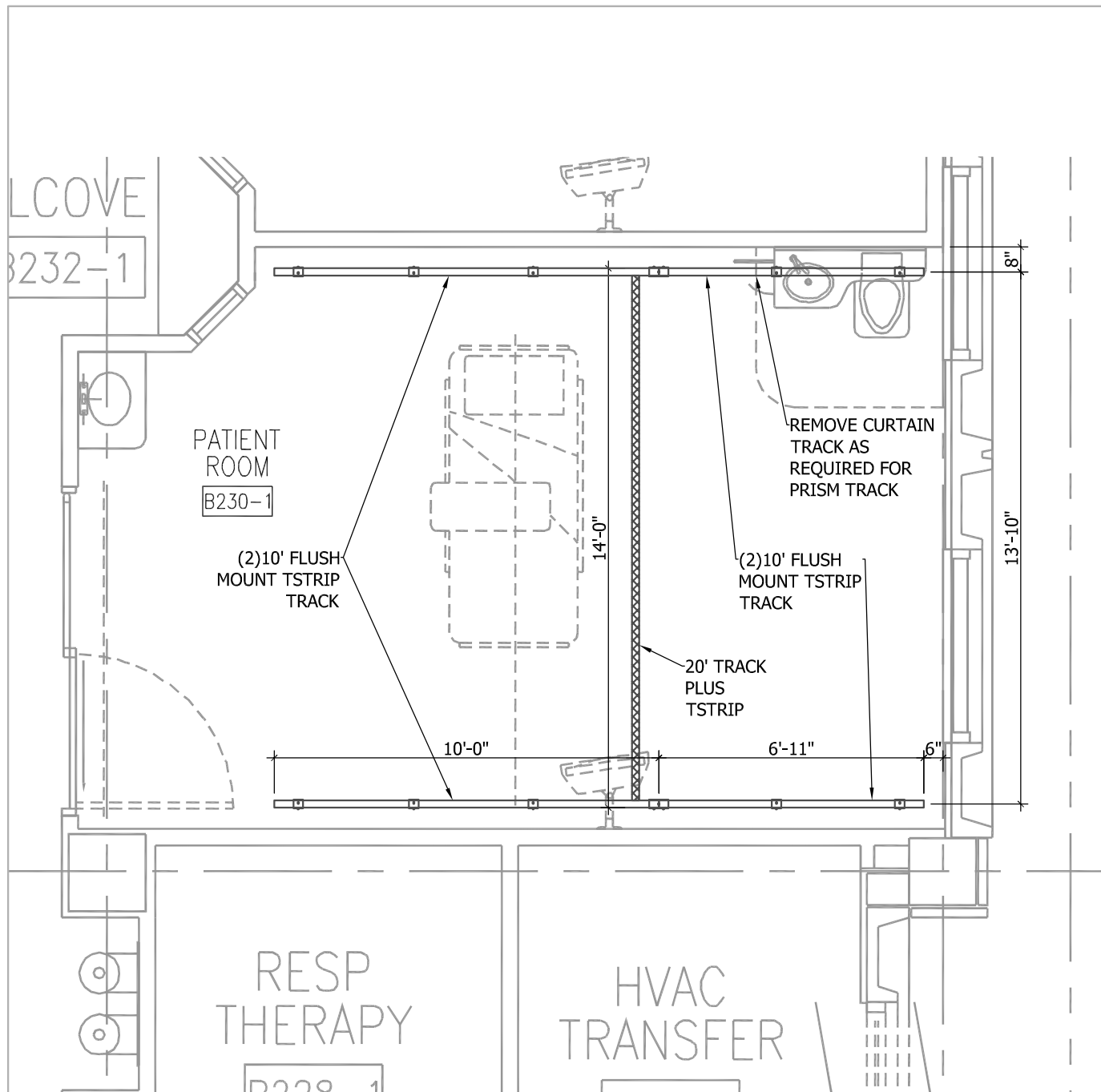
SHEET:  
6 OF 10

**TYPICAL OF 2**  
ROOMS: B220-1, B234-1


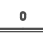

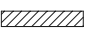



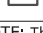
CLIENT APPROVAL: \_\_\_\_\_ DATE: \_\_\_\_\_

CLIENT HAS REVIEWED INFORMATION CONTAINED IN THESE DRAWINGS AND CONFIRMS THAT THE LAYOUT AND DIMENSIONS ARE ACCURATE AND APPROVES THEM TO BE INSTALLED AS INDICATED.

**INFORMATION ON THIS DOCUMENT IS PROPRIETARY TO PRISM MEDICAL AND SHALL NOT BE COPIED, REPRODUCED, USED OR DISCLOSED IN WHOLE OR IN PART WITHOUT WRITTEN CONSENT OF PRISM MEDICAL.**




## LEGEND

-  **3" BRACKET**
-  **6" BRACKET**
-  **STANDARD TRACK**
-  **SUPER TRACK/TRACKPLUS**
-  **CHARGING STATION**
-  **QUICKFIT 90° TURNTABLE**
-  **MULTIPORT TURNTABLE**
-  **TRANSITION GATE**

NOTE: The brackets in the above legend indicate the recommended locations for lateral bracing points for a suspended track system.

## VA GAINESVILLE ICU

## TYPICAL STANDARD ROOM D

REVISION	DATE		
DRAWN BY: BJ	DATE: 3/8/17	SCALE: 1/4" = 1'	SHEET: 7 OF 10

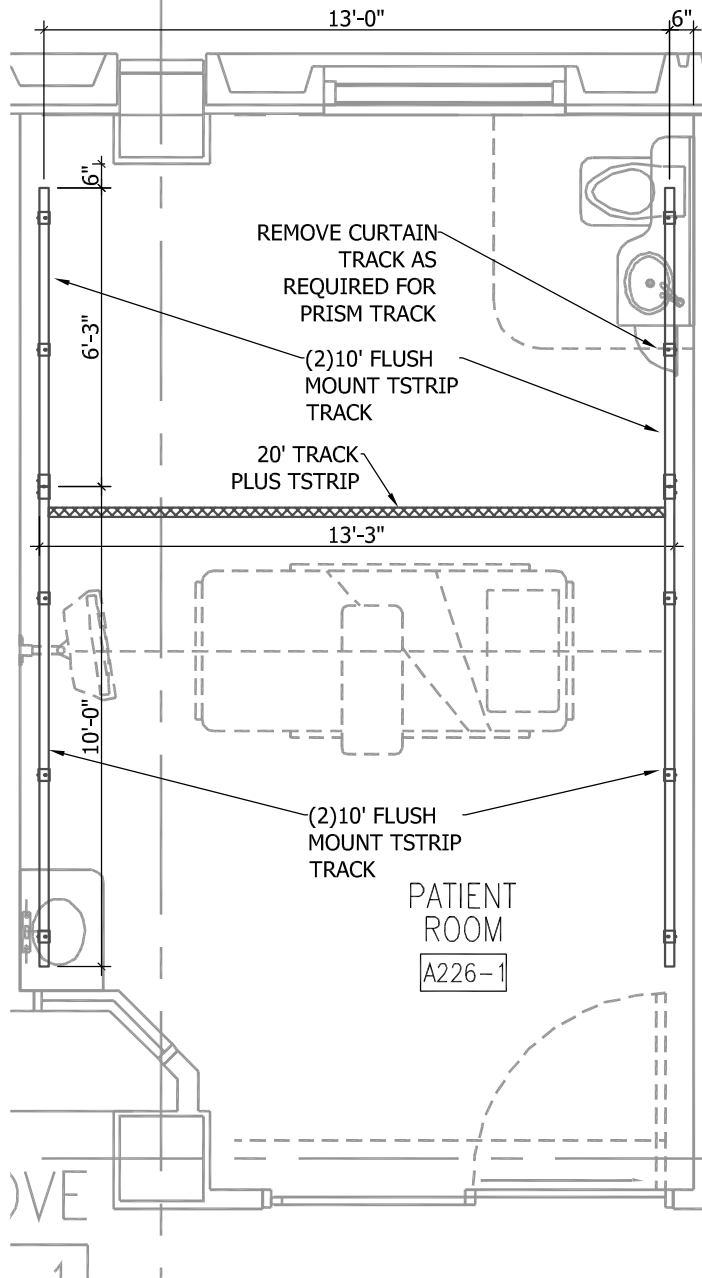
## TYPICAL OF 4

ROOMS: A222-1, A228-1, A232-1,  
B230-1

CLIENT APPROVAL: \_\_\_\_\_ DATE: \_\_\_\_\_

CLIENT HAS REVIEWED INFORMATION CONTAINED IN THESE DRAWINGS AND CONFIRMS THAT THE LAYOUT AND DIMENSIONS ARE ACCURATE AND APPROVES THEM TO BE INSTALLED AS INDICATED.

INFORMATION ON THIS DOCUMENT IS PROPRIETARY TO PRISM MEDICAL AND SHALL NOT BE COPIED, REPRODUCED, USED OR DISCLOSED IN WHOLE OR IN PART WITHOUT WRITTEN CONSENT OF PRISM MEDICAL.



## LEGEND



3" BRACKET



6" BRACKET



STANDARD TRACK



SUPER TRACK/TRACKPLUS



CHARGING STATION



QUICKFIT 90° TURNTABLE



MULTIPORT TURNTABLE



TRANSITION GATE

NOTE: The brackets in the above legend indicate the recommended locations for lateral bracing points for a suspended track system.

**VA GAINESVILLE  
ICU**

**TYPICAL STANDARD ROOM E**

**TYPICAL OF 1**

ROOM: A226-1

CLIENT APPROVAL: \_\_\_\_\_ DATE: \_\_\_\_\_

CLIENT HAS REVIEWED INFORMATION CONTAINED IN THESE DRAWINGS AND CONFIRMS THAT THE LAYOUT AND DIMENSIONS ARE ACCURATE AND APPROVES THEM TO BE INSTALLED AS INDICATED.

INFORMATION ON THIS DOCUMENT IS PROPRIETARY TO PRISM MEDICAL AND SHALL NOT BE COPIED, REPRODUCED, USED OR DISCLOSED IN WHOLE OR IN PART WITHOUT WRITTEN CONSENT OF PRISM MEDICAL.

REVISION

DATE



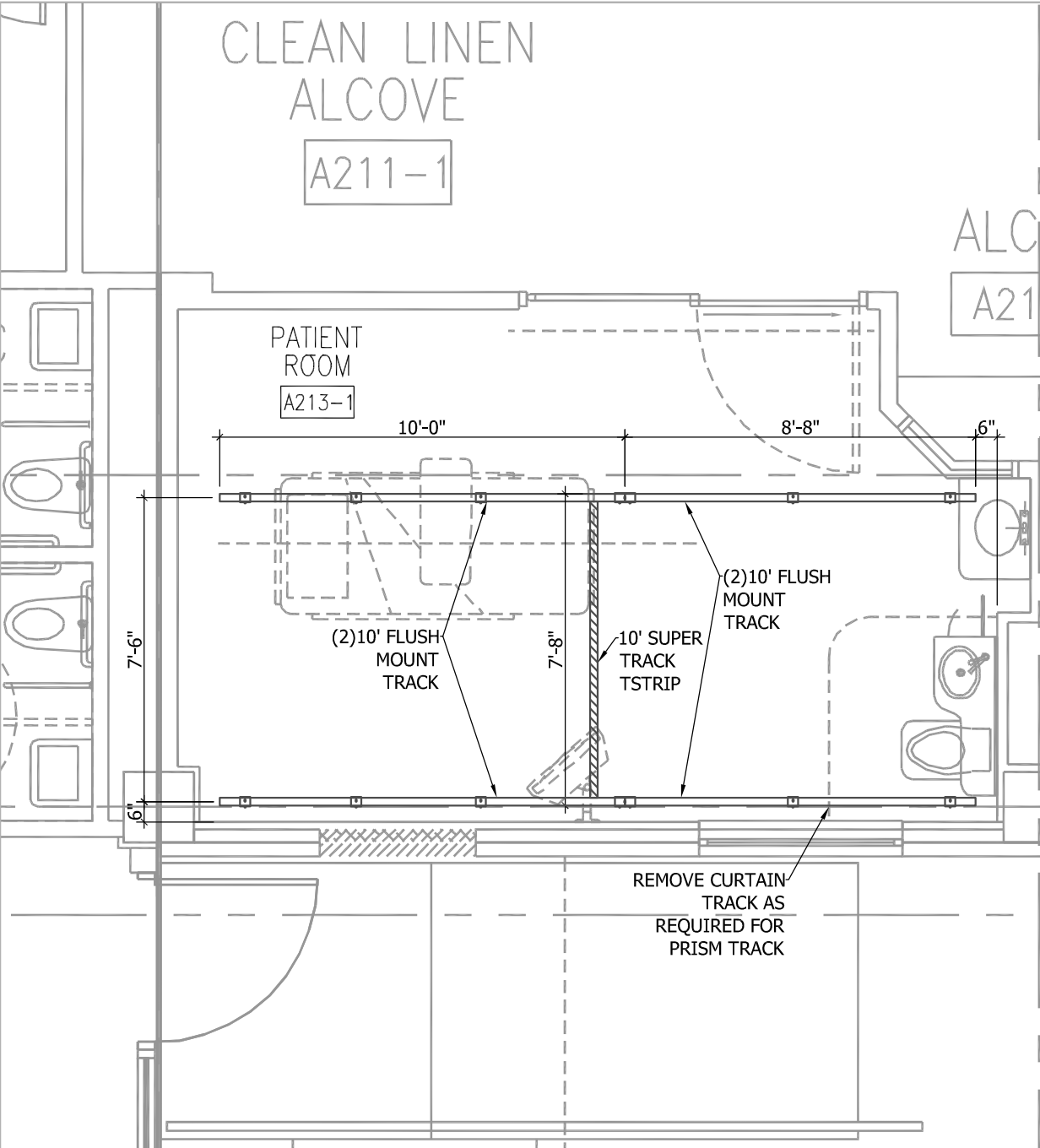
DRAWN BY:  
BJ

DATE:  
3/8/17

SCALE:  
1/4" = 1'

SHEET:  
8 OF 10













**TYPICAL OF 4**  
ROOMS: A213-1, A217-1, B203-1,  
B207-1

CLIENT APPROVAL: \_\_\_\_\_ DATE: \_\_\_\_\_

CLIENT HAS REVIEWED INFORMATION CONTAINED IN THESE DRAWINGS AND CONFIRMS THAT THE LAYOUT AND DIMENSIONS ARE ACCURATE AND APPROVES THEM TO BE INSTALLED AS INDICATED.

INFORMATION ON THIS DOCUMENT IS PROPRIETARY TO PRISM MEDICAL AND SHALL NOT BE COPIED, REPRODUCED, USED OR DISCLOSED IN WHOLE OR IN PART WITHOUT WRITTEN CONSENT OF PRISM MEDICAL.


### LEGEND

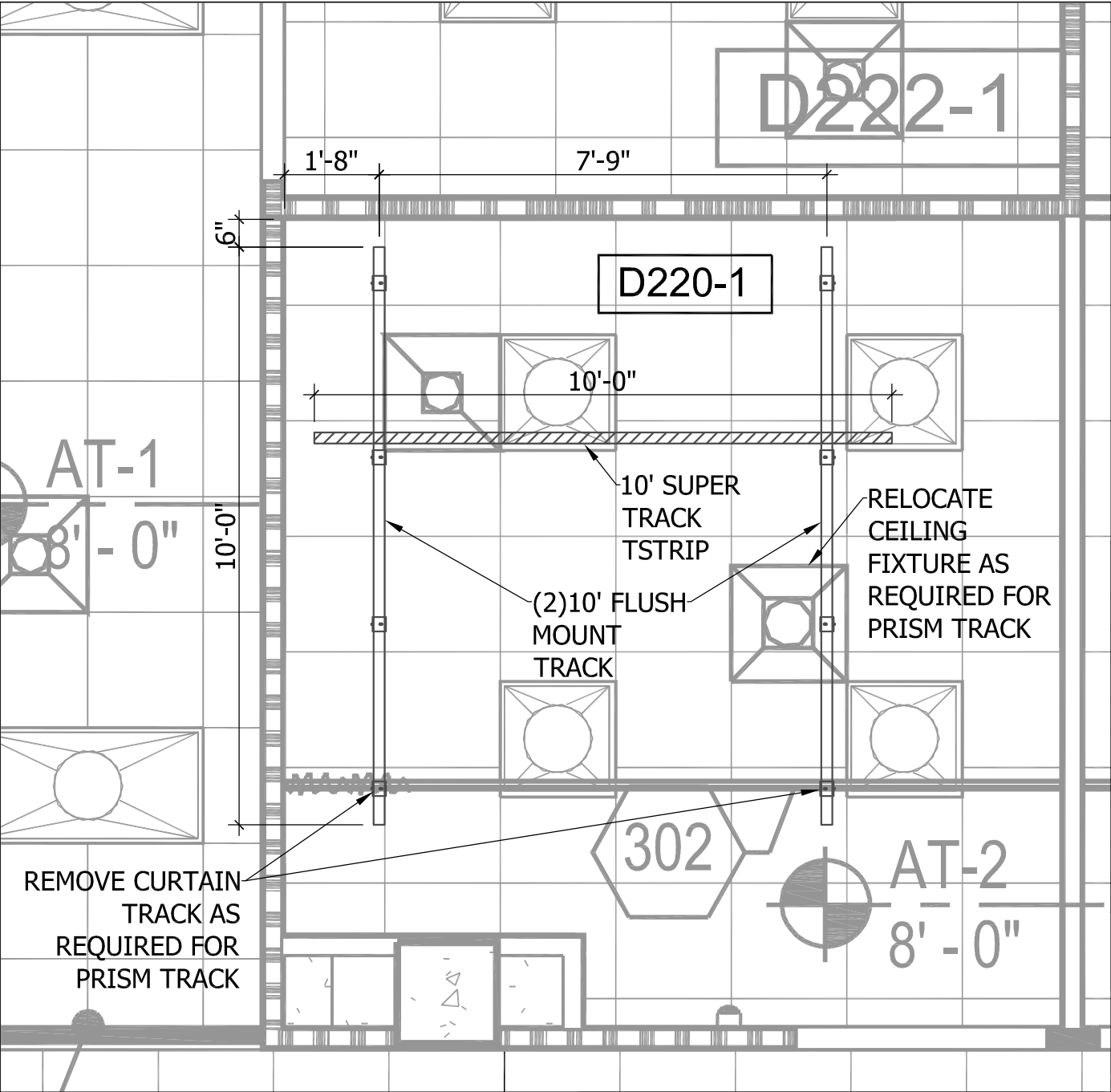
-  **3" BRACKET**
-  **6" BRACKET**
-  **STANDARD TRACK**
-  **SUPER TRACK/TRACKPLUS**
-  **CHARGING STATION**
-  **QUICKFIT 90° TURNTABLE**
-  **MULTIPORT TURNTABLE**
-  **TRANSITION GATE**

NOTE: The brackets in the above legend indicate the recommended locations for lateral bracing points for a suspended track system.


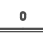

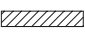



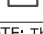
**VA GAINESVILLE  
ICU**

### TYPICAL STANDARD ROOM F

REVISION	DATE		
DRAWN BY: BJ	DATE: 3/8/17	SCALE: 1/4" = 1'	SHEET: 9 OF 10



**LEGEND**

	3" BRACKET
	6" BRACKET
	STANDARD TRACK
	SUPER TRACK/TRACKPLUS
	CHARGING STATION
	QUICKFIT 90° TURNTABLE
	MULTIPORT TURNTABLE
	TRANSITION GATE
NOTE: The brackets in the above legend indicate the recommended locations for lateral bracing points for a suspended track system.	

**VA GAINESVILLE  
ICU**


**TYPICAL STANDARD ROOM G**

**TYPICAL OF 2**  
**ROOMS: D218-1, D220-1**

CLIENT APPROVAL: \_\_\_\_\_ DATE: \_\_\_\_\_

CLIENT HAS REVIEWED INFORMATION CONTAINED IN THESE DRAWINGS AND CONFIRMS THAT THE LAYOUT AND DIMENSIONS ARE ACCURATE AND APPROVES THEM TO BE INSTALLED AS INDICATED.

**INFORMATION ON THIS DOCUMENT IS PROPRIETARY TO PRISM MEDICAL AND SHALL NOT BE COPIED, REPRODUCED, USED OR DISCLOSED IN WHOLE OR IN PART WITHOUT WRITTEN CONSENT OF PRISM MEDICAL.**

REVISION	DATE		
DRAWN BY: BJ	DATE: 3/8/17	SCALE: 3/8" = 1'	SHEET: 10 OF 10