

IMPROVE 5D DIALYSIS FUNCTIONAL DEFICIENCIES

JOHN L. McCLELLAN MEMORIAL VETERANS HOSPITAL

4300 WEST 7TH STREET
LITTLE ROCK, AR 72205

CONTRACT NO. VA256-12-D-0332
TASK ORDER NO. VA256-14-J-0987
PROJECT NO. 598-13-109

DEDUCTIVE ALTERNATES

SEE SHEET AE101 FOR DELINEATION OF DEDUCTIVE ALTERNATES.

BASE BID: WORK INCLUDES RENOVATION OF APPROXIMATELY 14,700 SQ. FT. AND ALL WORK INCLUDED IN DRAWINGS AND SPECIFICATIONS.

DEDUCTIVE ALTERNATE #1: ELIMINATE THE RENOVATION OF APPROXIMATELY 717 SQ. FT. OF WAITING ROOM AND TOILET ROOMS.

DEDUCTIVE ALTERNATE #2: ELIMINATE THE RENOVATION OF APPROXIMATELY 3, 506 SQ. FT. OF OFFICES AND ADMINISTRATION AREA.

DEDUCTIVE ALTERNATE #3: ELIMINATE THE RENOVATION OF APPROXIMATELY 568 SQ. FT. OF EXAM ROOMS, TREATMENT ROOMS, AND CORRIDOR.

DEDUCTIVE ALTERNATE #4: ELIMINATE THE RENOVATION OF APPROXIMATELY 315 SQ. FT. OF SIX HEADWALLS AND TREATMENT STATIONS.

SHEET INDEX		
No.	SHEET NUMBER	SHEET NAME
GENERAL		
1	GI001	COVER SHEET
2	GI002	PROJECT INFORMATION SHEET
3	GI003	STANDARD ABBREVIATIONS
4	GI004	PARTITION TYPES / TYPICAL MOUNTING HEIGHTS
5	GI005	PARTITION TYPICAL DETAILS
6	GI006	PARTITION UL ASSEMBLIES
7	GI007	LIFE SAFETY PLAN
HAZARDOUS MATERIALS		
8	HA101	ASBESTOS ABATEMENT PLAN
STRUCTURAL		
9	SI001	STRUCTURAL NOTES
10	SF101	FLOOR FRAMING PLANS
11	SF301	STRUCTURAL DETAILS
ARCHITECTURAL		
12	AP101	PHASING PLAN - 4D FLOOR
13	AD101	FLOOR PLAN - DEMOLITION
14	AD102	RCP - DEMOLITION
15	AE101	FLOOR PLAN - NEW CONSTRUCTION
16	AE102	RCP - NEW CONSTRUCTION
17	AE103	DIMENSION PLAN - SOUTHEAST AREA
18	AE104	DIMENSION PLAN - SOUTHWEST AREA
19	AE105	DIMENSION PLAN - NORTH AREA
20	AE301	ENLARGED PLANS - TOILET ROOMS
21	AE302	ENLARGED PLANS - TREATMENT AREAS
22	AE303	ENLARGED PLANS - TREATMENT AREAS
23	AE304	ENLARGED PLANS - PATIENT SUPPORT AREAS
24	AE305	ENLARGED PLANS - OFFICE & ADMIN ROOMS
25	AE306	ENLARGED PLANS - EQUIPMENT SUPPORT ROOMS
26	AE401	INTERIOR ELEVATIONS - TOILET ROOMS
27	AE402	INTERIOR ELEVATIONS - TOILET ROOMS
28	AE403	INTERIOR ELEVATIONS - TOILET ROOMS
29	AE404	INTERIOR ELEVATIONS
30	AE405	INTERIOR ELEVATIONS
31	AE406	INTERIOR ELEVATIONS
32	AE407	INTERIOR ELEVATIONS
33	AE408	INTERIOR ELEVATIONS
34	AE409	INTERIOR ELEVATIONS
35	AE501	INTERIOR DETAILS
36	AE502	CASEWORK DETAILS
37	AE503	CASEWORK DETAILS
38	AE504	CASEWORK DETAILS
39	AE601	DOOR SCHEDULE AND DETAILS
40	AG201	SIGNAGE DETAILS
41	AG202	SIGNAGE DETAILS
INTERIORS		
42	IN101	NEW CONSTRUCTION - FINISH FLOOR PLAN
43	IN102	FINISH SCHEDULE & NOTES
EQUIPMENT		
44	QH101	EQUIPMENT SCHEDULES
45	QH102	EQUIPMENT KEY PLAN
46	QH103	ENLARGED EQUIPMENT PLAN - NE
47	QH104	ENLARGED EQUIPMENT PLAN - SW
48	QH105	ENLARGED EQUIPMENT PLAN - SE
49	QH106	ENLARGED EQUIPMENT PLAN - NW
FIRE PROTECTION		
50	FP101	FIRE PROTECTION DEMOLITION PLAN - 5D
51	FP102	FIRE PROTECTION NEW PLAN - 5D
52	FD101	FIRE ALARM PLAN - DEMOLITION
53	FA101	FIRE ALARM PLAN - NEW WORK
PLUMBING		
54	PP001	PLUMBING LEGEND AND GENERAL NOTES
55	PD101	PLUMBING DEMOLITION PLAN - 4D
56	PD102	PLUMBING DEMOLITION PLAN - 5D
57	PL101	PLUMBING PLAN - 4D
58	PL102	PLUMBING SAN & VENT PLAN - 5D
59	PP103	PLUMBING MEDICAL GAS & WATER FLOOR PLAN - 5D
60	PP104	PLUMBING DIALYSIS SYSTEM FLOOR PLAN - 5D
61	PP401	PLUMBING ENLARGED PLANS - 5D
62	PP501	PLUMBING DETAILS
63	PP502	PLUMBING DETAILS
64	PP601	PLUMBING SCHEDULES
65	PP602	DIALYSIS WATER TREATMENT SYSTEM SCHEMATIC - 5D
66	PP603	PLUMBING RISER DIAGRAMS - 5D
67	PP604	PLUMBING RISER DIAGRAMS - 5D
MECHANICAL		
68	MH001	MECHANICAL LEGENDS AND ABBREVIATIONS
69	MD100	MECHANICAL DUCTWORK DEMOLITION PLAN
70	MD101	MECHANICAL PIPING DEMOLITION PLAN
71	MH101	MECHANICAL DUCTWORK PLAN
72	MP101	MECHANICAL PIPING PLAN
73	MH501	MECHANICAL DETAILS
74	MH502	MECHANICAL DETAILS
75	MH601	MECHANICAL SEQUENCE AND SCHEMATICS
76	MH602	MECHANICAL FLOW CONTROL DIAGRAMS
77	MH603	MECHANICAL SCHEDULES
ELECTRICAL		
78	E001	ELECTRICAL LEGEND & GENERAL NOTES
79	ED101	LIGHTING PLAN - DEMOLITION
80	ED102	POWER PLAN - DEMOLITION
81	EL101	LIGHTING PLAN - NEW WORK
82	EP101	POWER PLAN - NEW WORK
83	EP201	HEADWALL ELEVATIONS
84	E501	ELECTRICAL DETAILS, SCHEDULES, & RISER DIAGRAMS
TELECOMMUNICATIONS		
85	T001	TELECOMMUNICATIONS - LEGENDS, NOTES & ABBREVIATIONS
86	TD101	FLOOR PLAN - TELECOMMUNICATIONS DEMOLITION
87	TN101	FLOOR PLAN - TELECOMMUNICATIONS
88	T501	TELECOMMUNICATIONS - DETAILS
89	T601	TELECOMMUNICATIONS - SINGLE LINE DIAGRAMS

CONSTRUCTION DOCUMENTS
FULLY SPRINKLERED

CONSULTANTS:		ARCHITECT/ENGINEERS:		Drawing Title COVER SHEET		Project Title IMPROVE 5D DIALYSIS FUNCTIONAL DEFICIENCIES		Project Number 598-13-109		CENTRAL ARKANSAS VETERANS AFFAIRS HEALTHCARE SYSTEM	
				Approved: Project Director		Location 4300 WEST 7TH STREET LITTLE ROCK, AR 72205		Building Number JLM			
Revisions:				Apprver		Date 2014.10.31		Drawn NB		Checked ROW	
Date								Drawing Number GI001		Dwg. 1 of 89	

SCOPE INDICATORS

(6.1.14.1.3) WHERE INCIDENTAL TO ANOTHER OCCUPANCY, AREAS SHALL BE PERMITTED TO BE CONSIDERED PART OF THE PREDOMINANT OCCUPANCY.

OCCUPANCY CLASSIFICATIONS		
PRIMARY OCCUPANCY: HEALTHCARE		
CLASSIFICATION (LSC - CHAPTER 6)	FUNCTION	LOAD FACTOR (LSC TABLE 7.3.1.2)
HEALTHCARE	AMBULATORY HEALTHCARE	100 SF / PERSON - GROSS

(6.1.14.1.3) WHERE INCIDENTAL TO ANOTHER OCCUPANCY, AREAS SHALL BE PERMITTED TO BE CONSIDERED PART OF THE PREDOMINANT OCCUPANCY.

SECOND PAIR INDICATES COUNTERTOP
HEIGHT (I.E. 34")

TOILET ACCESSORY TAG

DESIGNS SHALL COMPLY WITH THE REQUIREMENTS OF THE 2012 EDITION OF NFPA 101 AND DOCUMENTS REFERENCED THEREIN. DESIGN FEATURES NOT ADDRESSED BY NFPA 101 OR DOCUMENTS REFERENCED THEREIN SHALL COMPLY WITH THE REQUIREMENTS OF THE 2012 EDITION OF THE IBC OR AS OTHERWISE ADDRESSED ABOVE IN THIS PROGRAM GUIDE. FOR DESIGN FEATURES THAT ARE ADDRESSED BY BOTH THE IBC AS WELL AS NFPA 101 OR A DOCUMENT REFERENCED BY NFPA 101, THE REQUIREMENTS OF NFPA 101 OR THE DOCUMENT REFERENCED BY NFPA 101 SHALL BE USED EXCLUSIVELY (THIS APPLIES EVEN IF THE IBC REQUIREMENTS ARE DIFFERENT).

**Department of
Veterans Affairs**

CONSULTANTS:

ARCHITECT/ENGINEERS:



BES DESIGN/BUILD, LLC
766 Middle St, Fairhope, AL 36532
Phone: 251.990.5778
Fax: 251.990.3716

Drawing Title
PROJECT INFORMATION SHEET

Approved: Project Director

Approver

Project Title
**IMPROVE 5D DIALYSIS
FUNCTIONAL DEFICIENCIES**

Location
**4300 WEST 7TH STREET
LITTLE ROCK, AR 72205**

Date
2014.10.31

205

Drawn
NB

Project Number

598-13-109

Building Number
11.00

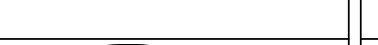
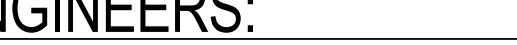

Drawing Number

G|002

Dwg. 2 of 89

A LABEL	A DOOR	BRGC	BRACING	CU IN	CUBIC INCH	FDC	FIRE DEPARTMENT CONNECTION	HDW	HARDWARE	LWIC	LIGHTWEIGHT INSULATING CONCRETE	OFF	OFFICE	RD	ROAD OR ROOF DRAIN	SS	SANITARY SEWER OR SERVICE SINK
A/C	AIR CONDITIONING	BRDG	BRIDGING	CU YD	CUBIC YARD	FDTN	FOUNDATION	HDWD	HARDWOOD			OH	OVERHANG	REC	RECESSED		
A/C UNIT	AIR CONDITIONING UNIT	BRDG JST	BRIDGING JOIST	CURT	CURTAIN	FE	FIRE EXTINGUISHER	HEPA	HIGH EFFICIENCY PARTICULATE AIR (FILTER)	LYR	LAYER	OH DR	OVERHEAD (COILING) DOOR	RECD	RECEIVED	SST	STAINLESS STEEL
A/E	ARCHITECT/ENGINEER	BRG	BEARING	CYL	CYLINDER	FEC	FIRE EXTINGUISHER CABINET					OPH	OPPOSITE HAND	RECP	RECEPTACLE	ST	STAIRS OR STREET
A/EA	ARCHITECT/ENGINEER/AMERICAN ARCHITECTURAL MANUFACTURERS ASSOCIATION	BRG PL	BEARING PLATE	CYL L	CYLINDER LOCK	FF	FINISH FACE	HEX	HEXAGON	M		OPNG	OPENING	RECT	RECTANGLE	STC	SOUND TRANSMISSION CLASSIFICATION
AB	ANCHOR BOLT	BRKT	BRACKET	D		FF EL	FINISH FLOOR ELEVATION	HF	HIGH FREQUENCY	MACH	MACHINE	OPP	OPPOSITE	REF	REFERENCE OR REFRIGERATOR		
ABA	ARCHITECTURAL BARRIERS ACT	BRZ	BRONZE	D	DEPTH OR PENNY (NAIL)	FF&E	FURNITURE, FIXTURE, AND EQUIPMENT	HGR	HANGAR	MACH RM	MACHINE ROOM	OPR	OPERABLE	REFR	REFRACTORY REFRIGERATION OR REFRIGERATION	STIF	STIFFENER
ABC	AGGREGATE BASE COURSE	BSMT	BASEMENT	D LABEL	CLASS D DOOR	HM		HMD	HOLLOW METAL DOOR	MAINT	MAINTAIN, MAINTENANCE	OPT	OPTIONAL			STL	STEEL
AC	ASBESTOS CEMENT OR ASPHALTIC CONCRETE	BTWN	BETWEEN	DAT	DATUM	MAN		HMF	HOLLOW METAL DOOR AND FRAME	MAN	MANUAL	OR	OPERATING ROOM OR OUTSIDE RADIUS	REG	REGISTER	STL JST	STEEL JOIST
ACI	AMERICAN CONCRETE INSTITUTE	BUR	BUSHEL	DB	DECIBEL	MATL		HNDRL	HANDRAIL	MATV	MASTER ANTENNA TELEVISION SYSTEM	ORD	ORDNANCE OR OVERFLOW ROOF DRAIN	REIN	REINFORCE, REINFORCED, OR REINFORCING	STL LNTL	STEEL LINTEL
ACS DR	ACCESS DOOR	C	CELSIUS CHANNEL OR CHANNEL CELSIUS	DBL GLZ	DOUBLE GLAZE	ORD		HS	HOURS			ORG	ORGANIC	REIN	REINFORCE, REINFORCED, OR REINFORCING	STL PL	STEEL PLATE
ACS FLR	ACCESS FLOOR	C CONC	CAST CONCRETE	DC	DIRECT CURRENT	FHC	FIRE HOSE CABINET	HO	HOLD OPEN	MAX	MAXIMUM	ORIG	ORIGINAL	REIN	REINFORCE, REINFORCED, OR REINFORCING	STL RF DK	STEEL ROOF DECK
ACS PNL	ACCESS PANEL	C CONC	CAST CONCRETE	DEG	DEGREE	FHMS	FLAT HEAD MACHINE SCREW	HOSP	HOSPITAL	MB	MACHINE BOLT	ORSH	ORNAMENTAL	REIN	REINFORCE, REINFORCED, OR REINFORCING	STL TB	STEEL TUB
ACST	ACOUSTIC	C LABEL	CLASS C DOOR	DEL	DELETE	FIG	FIGURE	HORIZ	HORIZONTAL	MCB	METAL CORNER BEAD	ORSH	ORNAMENTAL	REIN	REINFORCE, REINFORCED, OR REINFORCING	STL TR	STEEL TRUSS
ACT	ACOUSTICAL CEILING TILE	C TO C	CENTER TO CENTER	DEM	DEMOLITION	FIG	FIGURE	HOSP	HOSPITAL	MD	DECK	ORSH	OCCUPATIONAL SAFETY AND HEALTH ADMINISTRATION	REIN	REINFORCE, REINFORCED, OR REINFORCING	STL TR	STEEL TRUSS
AD	AREA DRAIN	C TO C	CENTER TO CENTER	DEM	DEMOLITION	FIN	FINISH	HP	HIGH PRESSURE OR HORSEPOWER	ME	MECHANICAL ENGINEER	OUT	OUTLET	REIN	REINFORCE, REINFORCED, OR REINFORCING	STR	STRINGERS
ADA	AMERICANS WITH DISABILITIES ACT	C/V	CONTRACTOR FURNISHED/GOVERNMENT INSTALLED	DEPT	DEPARTMENT	FIN FLR	FINISH FLOOR	HQ	HEADQUARTERS	MEAS	MEASURE	OUT	OUTLET	REIN	REINFORCE, REINFORCED, OR REINFORCING	STR	STRUCTURAL
ADB	AUTOMATIC DOOR BOTTOM	CAB	CABINET	DF	DETAIL	FIN GR	FINISH GRADE	HR	HOUR	MECH	MECHANICAL	OZ	OUNCE	REIN	REINFORCE, REINFORCED, OR REINFORCING	STR	STRUCTURAL
ADC	AUTOMATIC DOOR CLOSER	CAC	CEILING ATTENUATION CLASS	DIA	DIAMETER	FIN WD	FINISH WOOD	HS	HOURS	MECH RM	MECHANICAL ROOM			REIN	REINFORCE, REINFORCED, OR REINFORCING	STR	STRUCTURAL
ADDL	ADDITIONAL	CBB	CEMENTITIOUS (BACKER) BOARD	DIA	DIAMETER	FIX	FIXTURE	HRS	HOURS	MED	MEDICAL MEDIUM O MEDIUM MEDICAL	P	PARALLEL OR PARAPET	REIN	REINFORCE, REINFORCED, OR REINFORCING	STR	STRUCTURAL
ADDN	ADDITION	CC	CONTRACTOR FURNISHED/CONTRACTOR INSTALLED	DIAG	DIAGONAL	FLOORLINE	FLOORLINE	HT	HEIGHT	PAR	PARALLEL OR PARAPET	PAR	PARALLEL OR PARAPET	REIN	REINFORCE, REINFORCED, OR REINFORCING	STR	STRUCTURAL
ADH	ADHESIVE	CC	CONTRACTOR FURNISHED/CONTRACTOR INSTALLED	DIFF	DIFFERENCE OR DIFFUSER	FLASH	FLASHING	HSE	HOUSE	MEL	MELAMINE	PART	PARTIAL	REIN	REINFORCE, REINFORCED, OR REINFORCING	STR	STRUCTURAL
ADJ	ADJACENT, ADJOINING, OR ADJUSTABLE	CC	CONTRACTOR FURNISHED/CONTRACTOR INSTALLED	DIFF	DIFFERENCE OR DIFFUSER	FLASH	FLASHING	HSE	HOUSE	MEL	MELAMINE	PART	PARTIAL	REIN	REINFORCE, REINFORCED, OR REINFORCING	STR	STRUCTURAL
ADMIN	ADMINISTRATION	CC	CONTRACTOR FURNISHED/CONTRACTOR INSTALLED	DIFF	DIFFERENCE OR DIFFUSER	FLASH	FLASHING	HSE	HOUSE	MEL	MELAMINE	PART	PARTIAL	REIN	REINFORCE, REINFORCED, OR REINFORCING	STR	STRUCTURAL
AFC	ABOVE FINISHED COUNTER	CC	CONTRACTOR FURNISHED/CONTRACTOR INSTALLED	DIFF	DIFFERENCE OR DIFFUSER	FLASH	FLASHING	HSE	HOUSE	MEL	MELAMINE	PART	PARTIAL	REIN	REINFORCE, REINFORCED, OR REINFORCING	STR	STRUCTURAL
AFF	ABOVE FINISHED FLOOR	CC	CONTRACTOR FURNISHED/CONTRACTOR INSTALLED	DIFF	DIFFERENCE OR DIFFUSER	FLASH	FLASHING	HSE	HOUSE	MEL	MELAMINE	PART	PARTIAL	REIN	REINFORCE, REINFORCED, OR REINFORCING	STR	STRUCTURAL
AFG	ABOVE FINISHED GRADE	CC	CONTRACTOR FURNISHED/CONTRACTOR INSTALLED	DIFF	DIFFERENCE OR DIFFUSER	FLASH	FLASHING	HSE	HOUSE	MEL	MELAMINE	PART	PARTIAL	REIN	REINFORCE, REINFORCED, OR REINFORCING	STR	STRUCTURAL
AFS	ABOVE FINISHED SLAB	CC	CONTRACTOR FURNISHED/CONTRACTOR INSTALLED	DIFF	DIFFERENCE OR DIFFUSER	FLASH	FLASHING	HSE	HOUSE	MEL	MELAMINE	PART	PARTIAL	REIN	REINFORCE, REINFORCED, OR REINFORCING	STR	STRUCTURAL
AGA	AMERICAN GAS ASSOCIATION, ASSOCIATED GENERAL CONTRACTORS	CC	CONTRACTOR FURNISHED/CONTRACTOR INSTALLED	DIFF	DIFFERENCE OR DIFFUSER	FLASH	FLASHING	HSE	HOUSE	MEL	MELAMINE	PART	PARTIAL	REIN	REINFORCE, REINFORCED, OR REINFORCING	STR	STRUCTURAL
AGGR	AGGREGATE	CC	CONTRACTOR FURNISHED/CONTRACTOR INSTALLED	DIFF	DIFFERENCE OR DIFFUSER	FLASH	FLASHING	HSE	HOUSE	MEL	MELAMINE	PART	PARTIAL	REIN	REINFORCE, REINFORCED, OR REINFORCING	STR	STRUCTURAL
AHJ	AUTHORITY HAVING JURISDICTION	CC	CONTRACTOR FURNISHED/CONTRACTOR INSTALLED	DIFF	DIFFERENCE OR DIFFUSER	FLASH	FLASHING	HSE	HOUSE	MEL	MELAMINE	PART	PARTIAL	REIN	REINFORCE, REINFORCED, OR REINFORCING	STR	STRUCTURAL
AHR	ANCHOR	CC	CONTRACTOR FURNISHED/CONTRACTOR INSTALLED	DIFF	DIFFERENCE OR DIFFUSER	FLASH	FLASHING	HSE	HOUSE	MEL	MELAMINE	PART	PARTIAL	REIN	REINFORCE, REINFORCED, OR REINFORCING	STR	STRUCTURAL
AHU	AIR HANDLING UNIT	CC	CONTRACTOR FURNISHED/CONTRACTOR INSTALLED	DIFF	DIFFERENCE OR DIFFUSER	FLASH	FLASHING	HSE	HOUSE	MEL	MELAMINE	PART	PARTIAL	REIN	REINFORCE, REINFORCED, OR REINFORCING	STR	STRUCTURAL
AIA	AMERICAN INSTITUTE OF ARCHITECTS	CC	CONTRACTOR FURNISHED/CONTRACTOR INSTALLED	DIFF	DIFFERENCE OR DIFFUSER	FLASH	FLASHING	HSE	HOUSE	MEL	MELAMINE	PART	PARTIAL	REIN	REINFORCE, REINFORCED, OR REINFORCING	STR	STRUCTURAL
AISC	AMERICAN INSTITUTE OF STEEL CONSTRUCTION	CC	CONTRACTOR FURNISHED/CONTRACTOR INSTALLED	DIFF	DIFFERENCE OR DIFFUSER	FLASH	FLASHING	HSE	HOUSE	MEL	MELAMINE	PART	PARTIAL	REIN	REINFORCE, REINFORCED, OR REINFORCING	STR	STRUCTURAL
ALT	ALTERNATE, ALTERNATIVE	CC	CONTRACTOR FURNISHED/CONTRACTOR INSTALLED	DIFF	DIFFERENCE OR DIFFUSER	FLASH	FLASHING	HSE	HOUSE	MEL	MELAMINE	PART	PARTIAL	REIN	REINFORCE, REINFORCED, OR REINFORCING	STR	STRUCTURAL
ALT NO	ALTERNATE NUMBER	CC	CONTRACTOR FURNISHED/CONTRACTOR INSTALLED	DIFF	DIFFERENCE OR DIFFUSER	FLASH	FLASHING	HSE	HOUSE	MEL	MELAMINE	PART	PARTIAL	REIN	REINFORCE, REINFORCED, OR REINFORCING	STR	STRUCTURAL
ALUM	ALUMINUM	CC	CONTRACTOR FURNISHED/CONTRACTOR INSTALLED	DIFF	DIFFERENCE OR DIFFUSER	FLASH	FLASHING	HSE	HOUSE	MEL	MELAMINE	PART	PARTIAL	REIN	REINFORCE, REINFORCED, OR REINFORCING	STR	STRUCTURAL
AMP	AMPERE	CC	CONTRACTOR FURNISHED/CONTRACTOR INSTALLED	DIFF	DIFFERENCE OR DIFFUSER	FLASH	FLASHING	HSE	HOUSE	MEL	MELAMINE	PART	PARTIAL	REIN	REINFORCE, REINFORCED, OR REINFORCING	STR	STRUCTURAL
AMT	AMOUNT	CC	CONTRACTOR FURNISHED/CONTRACTOR INSTALLED	DIFF	DIFFERENCE OR DIFFUSER	FLASH	FLASHING	HSE	HOUSE	MEL	MELAMINE	PART	PARTIAL	REIN	REINFORCE, REINFORCED, OR REINFORCING	STR	STRUCTURAL
ANOD	ANODIZE	CC	CONTRACTOR FURNISHED/CONTRACTOR INSTALLED	DIFF	DIFFERENCE OR DIFFUSER	FLASH	FLASHING	HSE	HOUSE	MEL	MELAMINE	PART	PARTIAL	REIN	REINFORCE, REINFORCED, OR REINFORCING	STR	STRUCTURAL
ANSI	AMERICAN NATIONAL STANDARDS INSTITUTE	CC	CONTRACTOR FURNISHED/CONTRACTOR INSTALLED	DIFF	DIFFERENCE OR DIFFUSER	FLASH	FLASHING	HSE	HOUSE	MEL	MELAMINE	PART	PARTIAL	REIN	REINFORCE, REINFORCED, OR REINFORCING	STR	STRUCTURAL
ANT	ANTENNA	CC	CONTRACTOR FURNISHED/CONTRACTOR INSTALLED	DIFF	DIFFERENCE OR DIFFUSER	FLASH	FLASHING	HSE	HOUSE	MEL	MELAMINE	PART	PARTIAL	REIN	REINFORCE, REINFORCED, OR REINFORCING	STR	STRUCTURAL
APA	AMERICAN PLAYWOOD ASSOCIATION	CC	CONTRACTOR FURNISHED/CONTRACTOR INSTALLED	DIFF	DIFFERENCE OR DIFFUSER	FLASH	FLASHING	HSE	HOUSE	MEL	MELAMINE	PART	PARTIAL	REIN	REINFORCE, REINFORCED, OR REINFORCING	STR	STRUCTURAL
APPD	APPROVED	CC	CONTRACTOR FURNISHED/CONTRACTOR INSTALLED	DIFF	DIFFERENCE OR DIFFUSER	FLASH	FLASHING	HSE	HOUSE	MEL	MELAMINE	PART	PARTIAL	REIN	REINFORCE, REINFORCED, OR REINFORCING	STR	STRUCTURAL
APPROX	APPROXIMATE, APPROXIMATELY	CC	CONTRACTOR FURNISHED/CONTRACTOR INSTALLED	DIFF	DIFFERENCE OR DIFFUSER	FLASH	FLASHING	HSE	HOUSE	MEL	MELAMINE	PART	PARTIAL	REIN	REINFORCE, REINFORCED, OR REINFORCING	STR	STRUCTURAL
APT	APARTMENT	CC	CONTRACTOR FURNISHED/CONTRACTOR INSTALLED	DIFF	DIFFERENCE OR DIFFUSER	FLASH	FLASHING	HSE	HOUSE	MEL	MELAMINE	PART	PARTIAL	REIN	REINFORCE, REINFORCED, OR REINFORCING	STR	STRUCTURAL
AR	AS REQUIRED	CC	CONTRACTOR FURNISHED/CONTRACTOR INSTALLED	DIFF	DIFFERENCE OR DIFFUSER	FLASH	FLASHING	HSE	HOUSE	MEL	MELAMINE	PART	PARTIAL	REIN	REINFORCE, REINFORCED, OR REINFORCING	STR	STRUCTURAL
ARCH	ARCHITECT, ARCHITECTURAL	CC	CONTRACTOR FURNISHED/CONTRACTOR INSTALLED	DIFF	DIFFERENCE OR DIFFUSER	FLASH	FLASHING	HSE	HOUSE	MEL	MELAMINE	PART	PARTIAL	REIN	REINFORCE, REINFORCED, OR REINFORCING	STR	STRUCTURAL
ASB	ASBESTOS	CC	CONTRACTOR FURNISHED/CONTRACTOR INSTALLED	DIFF	DIFFERENCE OR DIFFUSER	FLASH	FLASHING	HSE	HOUSE	MEL	MELAMINE	PART	PARTIAL	REIN	REINFORCE, REINFORCED, OR REINFORCING	STR	STRUCTURAL
ASI	ARCHITECTS SUPPLEMENTAL INSTRUCTION	CC	CONTRACTOR FURNISHED/CONTRACTOR INSTALLED	DIFF	DIFFERENCE OR DIFFUSER	FLASH	FLASHING	HSE	HOUSE	MEL	MELAMINE	PART	PARTIAL	REIN	REINFORCE, REINFORCED, OR REINFORCING	STR	STRUCTURAL
ASKLR	AUOMATIC SPRINKLER	CC	CONTRACTOR FURNISHED/CONTRACTOR INSTALLED	DIFF	DIFFERENCE OR DIFFUSER	FLASH	FLASHING	HSE	HOUSE	MEL	MELAMINE	PART	PARTIAL	REIN	REINFORCE, REINFORCED, OR REINFORCING	STR	STRUCTURAL
ASPH	ASPHALT	CC	CONTRACTOR FURNISHED/CONTRACTOR INSTALLED	DIFF	DIFFERENCE OR DIFFUSER	FLASH	FLASHING	HSE	HOUSE	MEL	MELAMINE	PART	PARTIAL	REIN	REINFORCE, REINFORCED, OR REINFORCING	STR	STRUCTURAL
ASSN	ASSOCIATION	CC	CONTRACTOR FURNISHED/CONTRACTOR INSTALLED	DIFF	DIFFERENCE OR DIFFUSER	FLASH	FLASHING	HSE	HOUSE	MEL	MELAMINE	PART	PARTIAL	REIN	REINFORCE, REINFORCED, OR REINFORCING	STR	STRUCTURAL
ASTM	AMERICAN SOCIETY FOR TESTING AND MATERIALS	CC	CONTRACTOR FURNISHED/CONTRACTOR INSTALLED	DIFF	DIFFERENCE OR DIFFUSER	FLASH	FLASHING	HSE	HOUSE	MEL	MELAMINE	PART	PARTIAL	REIN	REINFORCE, REINFORCED, OR REINFORCING	STR	STRUCTURAL
ATCH	ATTACHMENT	CC	CONTRACTOR FURNISHED/CONTRACTOR INSTALLED	DIFF	DIFFERENCE OR DIFFUSER	FLASH	FLASHING	HSE	HOUSE	MEL	MELAMINE	PART	PARTIAL	REIN	REINFORCE, REINFORCED, OR REINFORCING	STR	STRUCTURAL
ATM	AUTOMATIC TELLER MACHINE	CC	CONTRACTOR FURNISHED/CONTRACTOR INSTALLED	DIFF	DIFFERENCE OR DIFFUSER	FLASH	FLASHING	HSE	HOUSE	MEL	MELAMINE	PART	PARTIAL	REIN	REINFORCE, REINFORCED, OR REINFORCING	STR	STRUCTURAL
ATS	AUTOMATIC TRANSFER SWITCH	CC	CONTRACTOR FURNISHED/CONTRACTOR INSTALLED	DIFF	DIFFERENCE OR DIFFUSER	FLASH	FLASHING	HSE	HOUSE	MEL	MELAMINE	PART	PARTIAL	REIN	REINFORCE, REINFORCED, OR REINFORCING	STR	STRUCTURAL
AUTO	AUTOMATIC	CC	CONTRACTOR FURNISHED/CONTRACTOR INSTALLED	DIFF	DIFFERENCE OR DIFFUSER	FLASH	FLASHING	HSE	HOUSE	MEL	MELAMINE	PART	PARTIAL	REIN	REINFORCE, REINFORCED, OR REINFORCING	STR	STRUCTURAL
AUX	AUXILIARY	CC	CONTRACTOR FURNISHED/CONTRACTOR INSTALLED	DIFF	DIFFERENCE OR DIFFUSER	FLASH	FLASHING	HSE	HOUSE	MEL	MELAMINE	PART	PARTIAL	REIN	REINFORCE, REINFORCED, OR REINFORCING	STR	STRUCTURAL
AV	AUDIO-VISUAL	CC	CONTRACTOR FURNISHED/CONTRACTOR INSTALLED	DIFF	DIFFERENCE OR DIFFUSER	FLASH	FLASHING	HSE	HOUSE	MEL	MELAMINE	PART	PARTIAL	REIN	REINFORCE, REINFORCED, OR REINFORCING	STR	STRUCTURAL
AVE	AVENUE	CC	CONTRACTOR FURNISHED/CONTRACTOR INSTALLED	DIFF	DIFFERENCE OR DIFFUSER	FLASH	FLASHING	HSE	HOUSE	MEL	MELAMINE	PART	PARTIAL	REIN	REINFORCE, REINFORCED, OR REINFORCING	STR	STRUCTURAL
AVG	AVERAGE	CC	CONTRACTOR FURNISHED/CONTRACTOR INSTALLED	DIFF	DIFFERENCE OR DIFFUSER	FLASH	FLASHING	HSE	HOUSE	MEL	MELAMINE	PART	PARTIAL	REIN	REINFORCE, REINFORCED, OR REINFORCING	STR	STRUCTURAL
AW	ACID WASTE	CC	CONTRACTOR FURNISHED/CONTRACTOR INSTALLED	DIFF	DIFFERENCE OR DIFFUSER	FLASH	FLASHING	HSE	HOUSE	MEL	MELAMINE	PART	PARTIAL	REIN	REINFORCE, REINFORCED, OR REINFORCING	STR	STRUCTURAL
AWI	ARCHITECTURAL WOODWORKING INSTITUTE	CC	CONTRACTOR FURNISHED/CONTRACTOR INSTALLED	DIFF	DIFFERENCE OR DIFFUSER	FLASH	FLASHING	HSE	HOUSE	MEL	MELAMINE	PART	PARTIAL	REIN	REINFORCE, REINFORCED, OR REINFORCING	STR	STRUCTURAL
AWPA	AMERICAN WOOD PRESERVERS'S ASSOCIATION	CC	CONTRACTOR FURNISHED/CONTRACTOR INSTALLED	DIFF	DIFFERENCE OR DIFFUSER	FLASH	FLASHING	HSE	HOUSE	MEL	MELAMINE	PART	PARTIAL	REIN	REINFORCE, REINFORCED, OR REINFORCING	STR	STRUCTURAL
AWS	AMERICAN WELDING SOCIETY	CC	CONTRACTOR FURNISHED/CONTRACTOR INSTALLED	DIFF	DIFFERENCE OR DIFFUSER	FLASH	FLASHING	HSE	HOUSE	MEL	MELAMINE	PART	PARTIAL	REIN	REINFORCE, REINFORCED, OR REINFORCING	STR	STRUCTURAL
AWT	ACOUSTICAL WALL TREATMENT	CC	CONTRACTOR FURNISHED/CONTRACTOR INSTALLED	DIFF	DIFFERENCE OR DIFFUSER	FLASH	FLASHING	HSE	HOUSE	MEL	MELAMINE	PART	PARTIAL	REIN	REINFORCE, REINFORCED, OR REINFORCING	STR	STRUCTURAL
B		CC	CONTRACTOR FURNISHED/CONTRACTOR INSTALLED	DIFF	DIFFERENCE OR DIFFUSER	FLASH	FLASHING	HSE	HOUSE	MEL	MELAMINE	PART	PARTIAL	REIN	REINFORCE, REINFORCED, OR REINFORCING	STR	STRUCTURAL
B LABEL	CLASS B DOOR	CC	CONTRACTOR FURNISHED/CONTRACTOR INSTALLED	DIFF	DIFFERENCE OR DIFFUSER	FLASH	FLASHING	HSE	HOUSE	MEL	MELAMINE	PART	PARTIAL	REIN	REINFORCE, REINFORCED, OR REINFORCING	STR	STRUCTURAL
B PL	BASE PLATE	CC	CONTRACTOR FURNISHED/CONTRACTOR INSTALLED	DIFF	DIFFERENCE OR DIFFUSER	FLASH	FLASHING	HSE	HOUSE	MEL	MELAMINE	PART	PARTIAL	REIN	REINFORCE, REINFORCED, OR REINFORCING	STR	STRUCTURAL
BALC	BALCONY	CC	CONTRACTOR FURNISHED/CONTRACTOR INSTALLED	DIFF	DIFFERENCE OR DIFFUSER	FLASH	FLASHING	HSE	HOUSE	MEL	MELAMINE	PART	PARTIAL	REIN	REINFORCE, REINFORCED, OR REINFORCING	STR	STRUCTURAL
BAT	BATTEN	CC	CONTRACTOR FURNISHED/CONTRACTOR INSTALLED	DIFF	DIFFERENCE OR DIFFUSER	FLASH	FLASHING	HSE	HOUSE	MEL	MELAMINE	PART	PARTIAL	REIN	REINFORCE, REINFORCED, OR REINFORCING	STR	STRUCTURAL
BB	BULLETIN BOARD	CC	CONTRACTOR FURNISHED/CONTRACTOR INSTALLED	DIFF	DIFFERENCE OR DIFFUSER	FLASH	FLASHING	HSE	HOUSE	MEL	MELAMINE	PART	PARTIAL	REIN	REINFORCE, REINFORCED, OR REINFORCING	STR	STRUCTURAL
BD	BOARD	CC	CONTRACTOR FURNISHED/CONTRACTOR INSTALLED	DIFF	DIFFERENCE OR DIFFUSER	FLASH	FLASHING	HSE	HOUSE	MEL	MELAMINE	PART	PARTIAL	REIN	REINFORCE, REINFORCED, OR REINFORCING	STR	STRUCTURAL
BD FT	BOARD FEET (FOOT)	CC	CONTRACTOR FURNISHED/CONTRACTOR INSTALLED	DIFF	DIFFERENCE OR DIFFUSER	FLASH	FLASHING	HSE	HOUSE	MEL	MELAMINE	PART	PARTIAL	REIN	REINFORCE, REINFORCED, OR REINFORCING	STR	STRUCTURAL
BEV	BEVEL	CC	CONTRACTOR FURNISHED/CONTRACTOR INSTALLED	DIFF	DIFFERENCE OR DIFFUSER	FLASH	FLASHING	HSE	HOUSE	MEL	MELAMINE	PART	PARTIAL	REIN	REINFORCE, REINFORCED, OR REINFORCING	STR	STRUCTURAL
BHMA	BUILDER'S HARDWARE MANUFACTURER'S ASSOCIATION	CC	CONTRACTOR FURNISHED/CONTRACTOR INSTALLED	DIFF	DIFFERENCE OR DIFFUSER	FLASH	FLASHING	HSE	HOUSE	MEL	MELAMINE	PART	PARTIAL	REIN	REINFORCE, REINFORCED, OR REINFORCING	STR	STRUCTURAL
BI FLD DR	BIFOLDING DOORS	CC	CONTRACTOR FURNISHED/CONTRACTOR INSTALLED	DIFF	DIFFERENCE OR DIFFUSER	FLASH	FLASHING	HSE	HOUSE	MEL	MELAMINE	PART	PARTIAL	REIN	REINFORCE, REINFORCED, OR REINFORCING	STR	STRUCTURAL
BITUM	BITUMINOUS	CC	CONTRACTOR FURNISHED/CONTRACTOR INSTALLED	DIFF	DIFFERENCE OR DIFFUSER	FLASH	FLASHING	HSE	HOUSE	MEL	MELAMINE	PART	PARTIAL	REIN	REINFORCE, REINFORCED, OR REINFORCING	STR	STRUCTURAL
BKG	BACKING	CC	CONTRACTOR FURNISHED/CONTRACTOR INSTALLED	DIFF	DIFFERENCE OR DIFFUSER	FLASH	FLASHING	HSE	HOUSE	MEL	MELAMINE	PART	PARTIAL	REIN	REINFORCE, REINFORCED, OR REINFORCING	STR	STRUCTURAL
BLD	BUILD	CC	CONTRACTOR FURNISHED/CONTRACTOR INSTALLED	DIFF	DIFFERENCE OR DIFFUSER	FLASH	FLASHING	HSE	HOUSE	MEL	MELAMINE	PART	PARTIAL	REIN	REINFORCE, REINFORCED, OR REINFORCING	STR	STRUCTURAL
BLDG	BUILDING	CC	CONTRACTOR FURNISHED/CONTRACTOR INSTALLED	DIFF	DIFFERENCE OR DIFFUSER	FLASH	FLASH										

**CONSTRUCTION DOCUMENTS
FULLY SPRINKLERED**

		CONSULTANTS:		<div></div>		ARCHITECT/ENGINEERS:		<div></div> <div>BES DESIGN/BUILD, LLC 766 Middle St, Fairhope, AL 36532 Phone: 251.990.5778 Fax: 251.990.3716</div>		<div>Drawing Title STANDARD ABBREVIATIONS</div>		<div>Project Title IMPROVE 5D DIALYSIS FUNCTIONAL DEFICIENCIES</div>		<div>Project Number 598-13-109</div>		CENTRAL ARKANSAS VETERANS AFFAIRS HEALTHCARE SYSTEM					
								<div>Approved: Project Director</div>		<div>Location 4300 WEST 7TH STREET LITTLE ROCK, AR 72205</div>		<div>Building Number JLM</div>		<div>Drawing Number</div>							
Revisions:		Date								<div>Approver</div>		<div>Date 2014.10.31</div>		<div>Drawn NB</div>		<div>Checked ROW</div>		<div>GI003</div>		 Department of Veterans Affairs	
																<div>Dwg. 3 of 89</div>					

A

three inches = one foot

B

one and one half inches = one foot

C

one inch = one foot

D

three quarters inch = one foot

E

one half inch = one foot

F

three eighths inch = one foot


G

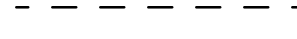
one quarter inch = one foot

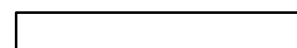
H


one eighth inch = one foot


PARTITION PLAN LEGEND


 EXISTING UNRATED PARTITION


 EXISTING PARTITION TO BE REMOVED

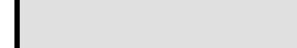
 NEW UNRATED PARTITION


 SMOKE BARRIER

 1 HOUR FIRE BARRIER

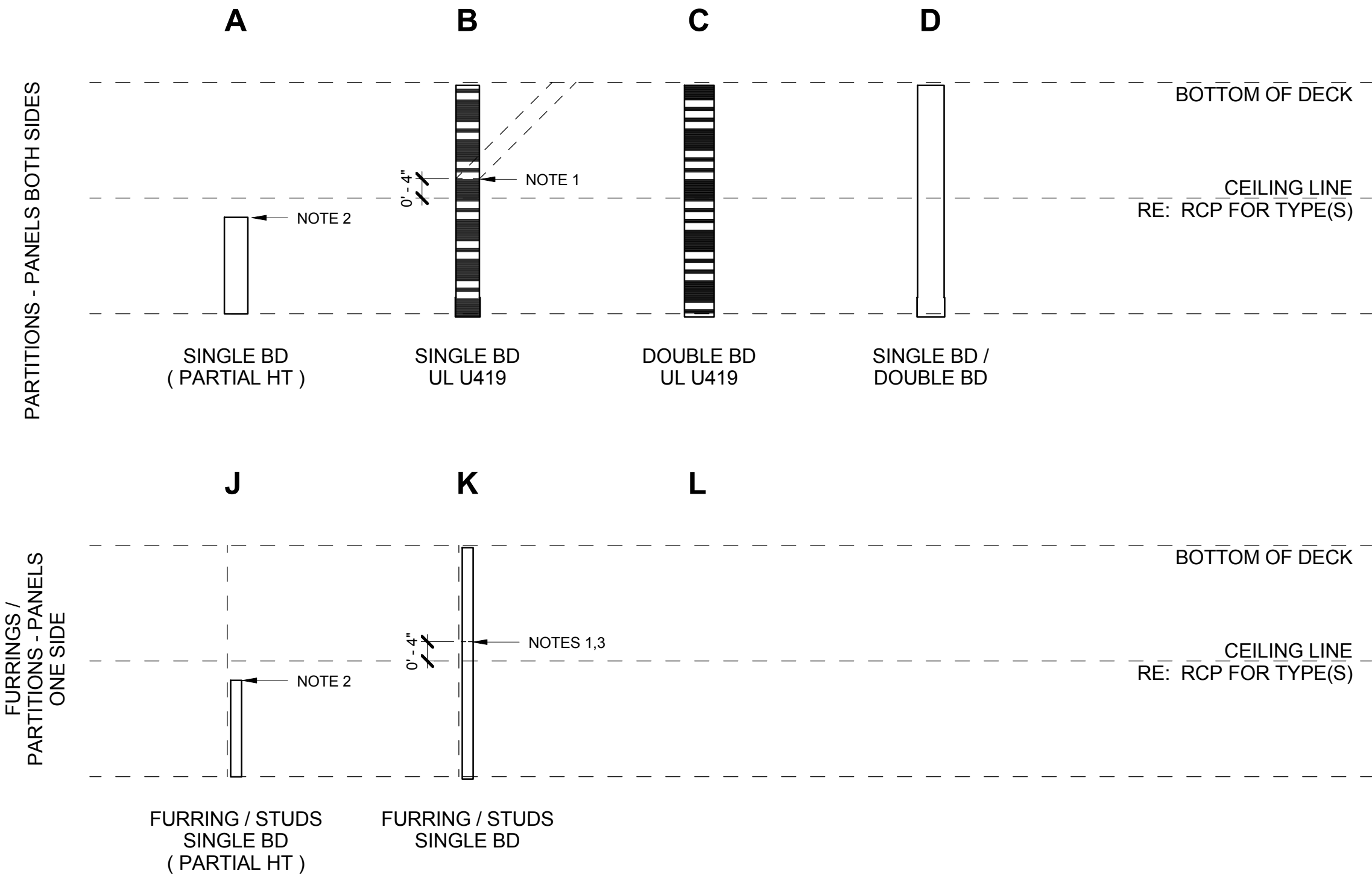
 2 HOUR FIRE BARRIER

 AREA NOT IN CONTRACT

 CONTRACT LIMITS

 1 HOUR TEMPORARY PARTITION (COORD w/ ASB, ABATEMENT) DESIGN NO. U419, ANSI/UL 263

PARTITION TYPES



- PARTITION TYPE NOTES**
- WHERE NO FIRE/SMOKE RATING AND NO ACOUSTIC INSULATION INDICATED, TERMINATE STUDS 4" ABOVE HIGHEST ADJACENT CEILING AND BRACE TOP TRACK AT INTERVALS OF 4'-0" OC (MAX) TO STRUCTURE ABOVE OR ADJACENT. EXCEPTION: HOUSEKEEPING ROOMS - ALL PARTITIONS FULL HEIGHT TO DECK ABOVE.
 - SEE FLOOR PLANS AND INT. ELEV. FOR HT OF PARTIAL HEIGHT PARTITION ABOVE FINISH FLOOR.
 - BRACE PARTIAL HEIGHT ONE-SIDED PARTITIONS TO ADJACENT PARTITIONS. EXCEPTION: WHEN OVERLAYING RATED WALLS, BRACE NEW STUDS TO STRUCTURE ONLY.

SIMPLE PARTITIONS:

- INDICATES PARTITION TYPE
- INDICATES VARIATION CODE(S)
- INDICATES NOMINAL CORE SIZE
- INDICATES FIRE/SMOKE RATING (0-4 HRS); _ INDICATES 0 HOURS

COMPOSITE PARTITIONS:
DOUBLE LETTERS INDICATE COMPOSITE PARTITION MADE UP OF OTHER PARTITION TYPES. FOR EXAMPLE, KK_4A INDICATES A NON-RATED PARTITION CONSTRUCTED OF TWO (TYPE 'K') SINGLE-SIDED PARTITIONS WITH ACOUSTICAL INSULATION AND A SINGLE LAYER OF GWB ON OUTSIDE FACES

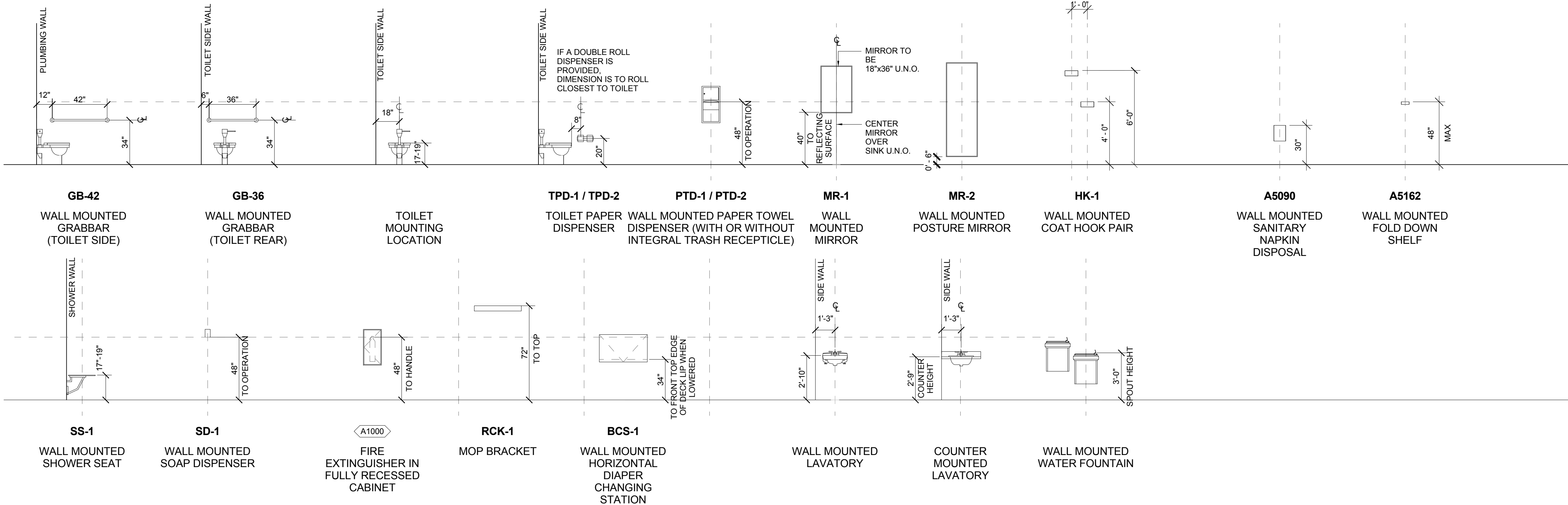
FIRE RATINGS:		MTL STUD CORE SIZES:	
1	NON-RATED	0	7/8" FURRING
1	1-HR RATING	1	1-5/8" STUD
2	2-HR RATING	2	2-1/2" STUD
3	3-HR RATING	4	3-5/8" STUD
4	4-HR RATING	6	6" STUD
		8	8" STUD

- VARIATION CODES**
- A** ACOUSTICAL INSULATION: ACOUSTICAL BLANKET INSUL FULL HT OF PARTITION, PLUS ACOUSTICAL SEALANT BEADS AROUND FULL PERIMETER OF PARTITION. STC RATING OF 45 MINIMUM.
 - B** SMOKE BARRIER (RATED) - SEE LIFE SAFETY PLANS
 - C** SMOKE BARRIER (UNRATED) - SEE LIFE SAFETY PLANS. BOARD TO BOTTOM OF STRUCTURE ONE SIDE ONLY
 - D** SMOKE BARRIER (UNRATED) - SEE LIFE SAFETY PLANS. BOARD TO BOTTOM OF STRUCTURE BOTH SIDES
 - W** PLYWOOD SUBSTRATE WITH WOOD BOARD OVERLAY IN LIEU OF GWB - RE: AE516

TYPICAL PARTITION NOTES

- TESTING AGENCIES FOR THE FIRE ASSEMBLIES IDENTIFIED ON THE PARTITION SCHEDULE ARE:
UL - UNDERWRITERS LABORATORY DESIGN NUMBER
GA - GYPSUM ASSOCIATION DESIGN NUMBER
- PLAN DIMENSIONS ARE TYPICALLY TO GRID LINE, FACE OF PARTITION, OR FACE OF CONCRETE OR CMU UNLESS NOTED OR INDICATED OTHERWISE. DOORS NOT LOCATED BY PLAN DIMENSIONS ARE LOCATED BY JAMB DETAILS REFERENCED FROM DOOR SCHEDULE. CRITICAL CLEARANCES ARE DESIGNED 'CLR'.
- THE PARTITION TYPE NOTED BY A SYMBOL CONTINUES BETWEEN CORNERS AND BETWEEN INTERSECTING PARTITIONS. AT OPENINGS, PROVIDE THE SAME PARTITION TYPE ABOVE AND BELOW SUCH OPENING AS THAT ON EITHER SIDE OF THE OPENING. AT PARTITIONS SCHEDULED TO EXTEND TO STRUCTURE ABOVE, EXTEND THE PARTITION AROUND AND ABOVE DUCTS, BEAMS, AND OTHER OBSTRUCTIONS. ALIGN DIFFERENT PARTITION THICKNESSES SO THAT THE FINISHED WALL PLANES CONTINUE UNBROKEN WITHIN EACH ROOM OR CORRIDOR, UNLESS NOTED OTHERWISE. WHERE FACE OF COLUMN FURRING IS SHOWN AS ALIGNING WITH FACE OF PARTITION, CONTINUE PARTITION FACE UNBROKEN PAST THE COLUMN. STANDARD COLUMN FURRING DETAILS LOCATE PARTITION FACE.
- WHERE GYPSUM BOARD IS NOT SCHEDULED TO EXTEND TO BOTTOM OF STRUCTURE, BOARD MAY TERMINATE 4" ABOVE ABUTTED CEILING ON EACH SIDE. IF NO CEILING IS SCHEDULED, BOARD IN THAT ROOM MUST EXTEND FULL HEIGHT.
- WHERE PARTITIONS ARE INDICATED AS BEING FIRE-RATED, CONTINUE PARTITIONS UNBROKEN TO BOTTOM OF DECK ABOVE AND ALONG THE ENTIRE PERIMETER OF THE SPACES BEING SEPARATED BY THE FIRE-RATED PARTITIONS. CONTINUE FIRE-RATED PARTITION SEPARATIONS WITHOUT INTERRUPTION WHERE THEY INTERSECT NON-RATED PARTITIONS.
- WHERE COLUMNS, MECHANICAL CHASES, PIPING, AND OTHER ELEMENTS ARE LOCATED WITHIN A FIRE-RATED PARTITION, CONTINUE THE GYPSUM BOARD AROUND BOTH SIDES OF THE OBSTRUCTION TO MAINTAIN THE RATED ASSEMBLY. FOR DUCT, PIPE, CONDUIT, AND OTHER PENETRATIONS PASSING THROUGH A FIRE-RATED PARTITION, PROVIDE TIGHT FITTING FIRE-RATED STOPPING ASSEMBLIES EQUAL TO ASSEMBLY RATING.
- WHERE SMOKE AND FIRE-RATED PARTITIONS TERMINATE AT EXTERIOR WALLS, FILL VOIDS WITH FIRE-RATED ASSEMBLIES, OR EXTEND TO RATED PARTITIONS TO THE OUTER FACE OF EXTERIOR WALL CONSTRUCTIONS. ENSURE THAT NO FLANKING PATHWAYS EXIST THAT MIGHT PERMIT SMOKE OR FIRE TO FLOW FROM ONE SIDE OF THE PARTITION TO THE OTHER.
- PROVIDE CONTINUOUS STANDARD BLOCKING AS DETAILED FOR WALL MOUNTED ELEMENTS AT TOP AND BOTTOM ATTACHMENT POINTS AND AT INTERMEDIATE ATTACHMENT POINTS AS REQUIRED BY THE ELEMENT, INCLUDING, BUT NOT LIMITED TO: ACCESSORIES, RAILINGS, FLOOR-MOUNTED CASEWORK, CURTAIN ROBS, WALL PROTECTION, CORNER GUARDS, AND EQUIPMENT WEIGHING LESS THAN 50 POUNDS.
- PROVIDE HEAVY DUTY BLOCKING AS DETAILED FOR SUPPORT OF HEAVY ELEMENTS, INCLUDING, BUT NOT LIMITED TO: WALL MOUNTED SHELVING AND CABINETRY, HAND RAILS, GRAB BARS, BABY-CHANGING TABLES, LAVATORIES, COUNTER TOPS, MOUNTS FOR TELEVISIONS AND COMPUTER MONITORS, DOOR STOPS, AND EQUIPMENT WEIGHING IN EXCESS OF 50 POUNDS.
- WHERE ACOUSTICAL INSULATION IS INDICATED FOR PARTITIONS, SEAL TOP, BOTTOM AND SIDES OF EACH FACE AND EDGE OF GYPSUM BOARD WITH ACOUSTICAL SEALANT WHERE THE BOARD CONTACTS OTHER MATERIALS.
- BACK-TO-BACK ELECTRICAL BOXES ARE NOT PERMITTED UNLESS BOTH BOXES ARE WRAPPED WITH ADHESIVE WRAPPED INTUMESCENT PUTTY PADS. WHERE JUNCTION, OUTLET, AND SWITCH BOXES OCCUR ON OPPOSITE SIDES OF A PARTITION, EITHER PROVIDE PUTTY PADS FOR BOTH BOXES, OR OFFSET THE BOXES A MINIMUM OF ONE STUD SPACE AND PROVIDE ACOUSTICAL INSULATION BEHIND AND BETWEEN THEM.
- IN FIRE-RATED PARTITIONS WITH TOTAL "BLACK BOX" PENETRATIONS IN EXCESS OF 100 SQ. IN. IN 100 SQ. FT., ADDITIONALLY PROTECT BACK OF BOXES WITH RATED ASSEMBLIES APPROVED BY THE AUTHORITY HAVING JURISDICTION.
- PROVIDE ACOUSTICAL SEALANT AROUND ALL PENETRATIONS THROUGH THE MEMBRANES OF ACOUSTICAL PARTITIONS. PROVIDE FIRE-RATED SEALANT IN LIEU OF ACOUSTICAL SEALANT WHERE REQUIRED TO MAINTAIN FIRE RATING OF ACOUSTIC PARTITIONS.
- IN SHOWER STALLS, WALLS BEHIND PLUMBING FIXTURES AND WALLS SCHEDULED TO RECEIVE RESINOUS FINISH, PROVIDE TILE BACKER BOARD IN LIEU OF GYPSUM BOARD AT WALLS INDICATED TO RECEIVE CERAMIC TILE. BACKER BOARD TO MATCH GYPSUM BOARD IN TERMS OF THICKNESS AND FIRE-RATING CAPABILITY. PROVIDE MOISTURE RESISTANT (MR) GYPSUM BOARD IN LIEU OF STANDARD GYPSUM BOARD AT THE FOLLOWING LOCATIONS:
DIRECTLY BEHIND PLUMBING FIXTURES WHERE FINISH IS NOT CERAMIC TILE, AND CEILINGS ABOVE SHOWER STALLS.
- AT NON-FIRE RATED, NON-ACOUSTIC PARTITIONS THAT DO NOT EXTEND TO STRUCTURE ABOVE, CONTRACTOR HAS OPTION OF EXTENDING STUDS TO STRUCTURE ABOVE OR TERMINATING STUDS 4" ABOVE HIGHEST ADJACENT CEILING AND BRACING TOP TRACK AT INTERVALS OF 4'-0" OC (MAX) TO STRUCTURE ABOVE.
- WHERE STUDS EXTEND MORE THAN 3'-0" ABOVE THE GYPSUM BOARD, PROVIDE HORIZONTAL BRACING MIDWAY BETWEEN TOP OF GYPSUM BOARD AND TOP OF STUDS.
- AT FURRING PARTITIONS (GYPSUM BOARD ONE SIDE ONLY) PROVIDE HORIZONTAL STUD BRACING OR 18 GA ANGLE CLIPS SECURED TO STRUCTURAL SUBSTRATE AT 4'-0" OC (MAX). SIMILAR REQUIREMENT AT COLUMN FURRING.
- MAGNITUDE OF POTENTIAL STRUCTURAL LIVE LOAD DEFLECTION IMPACTING PARTITIONS FOR THIS PROJECT IS 1/2" IN COMPRESSION AND 0" IN EXTENSION, FOR A TOTAL MOVEMENT OF 1/2". FOR RATED PARTITIONS, THE HEAD-OF-WALL FIRE RESISTIVE ASSEMBLY PROVIDED MUST BE RATED FOR THIS DEGREE OF MOVEMENT. PROVIDE A FIRE-RESISTIVE VARIATION FOR EACH CONDITION (BEAMS, DUCTS, CORNERS, ETC.) ENCOUNTERED AT THE RATED PARTITION HEADS. FOR NON RATED PARTITIONS, SECURE THE TOP TRACK IN A MANNER THAT ACCOMMODATES DEFLECTION OF THE STRUCTURE ABOVE OR BELOW.
- FOR DOORS, RELITES, DUCT, AND OTHER OPENINGS WITH ROUGH OPENING DIMENSIONS OF 4'-0" OR WIDER, PROVIDE HEAVY GAUGE KING STUDS AND A "BOX BEAM" HEADER AS DETAILED IN STANDARD OPENING HEADER DETAILS.
- PARTITION TYPE IS TO BE B_4 UNO.

EQUIPMENT MOUNTING LEGEND



CONSULTANTS:

ARCHITECT/ENGINEERS:



BES DESIGN/BUILD, LLC
766 Middle St. Fairhope, AL 36532
Phone: 251.990.5778
Fax: 251.990.3716

Drawing Title
PARTITION TYPES / TYPICAL MOUNTING TYPES

Approved: Project Director

Approver

Project Title
IMPROVE 5D DIALYSIS FUNCTIONAL DEFICIENCIES

Location
**4300 WEST 7TH STREET
LITTLE ROCK, AR 72205**

Date
2014.10.31

Drawn
NB

Checked
ROW

Project Number
598-13-109

Building Number
JLM

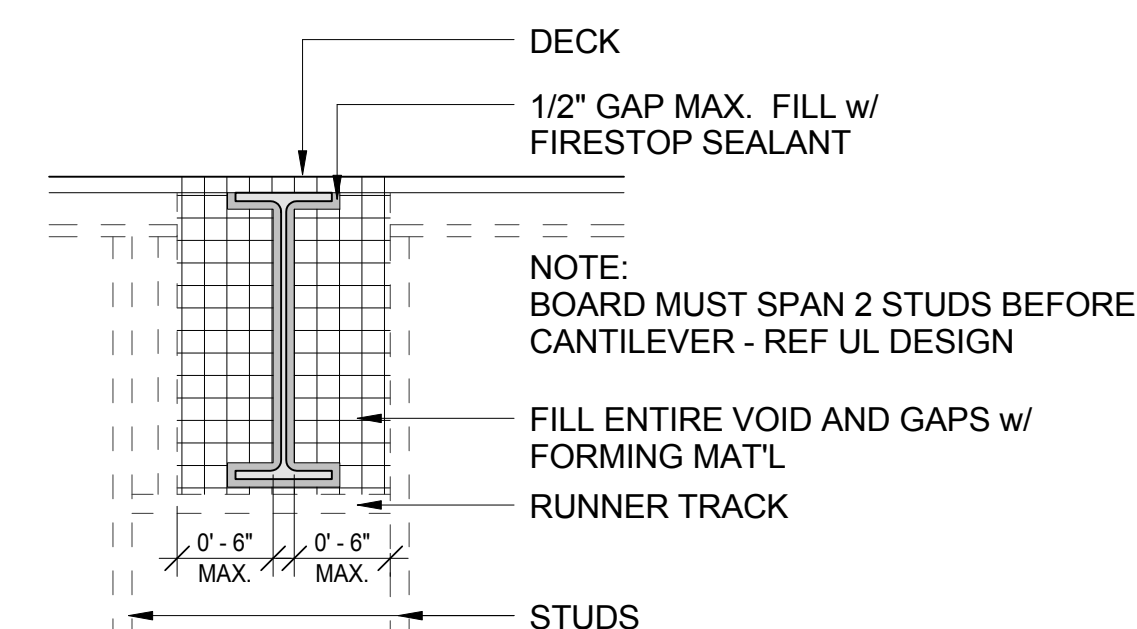
Drawing Number

G1004

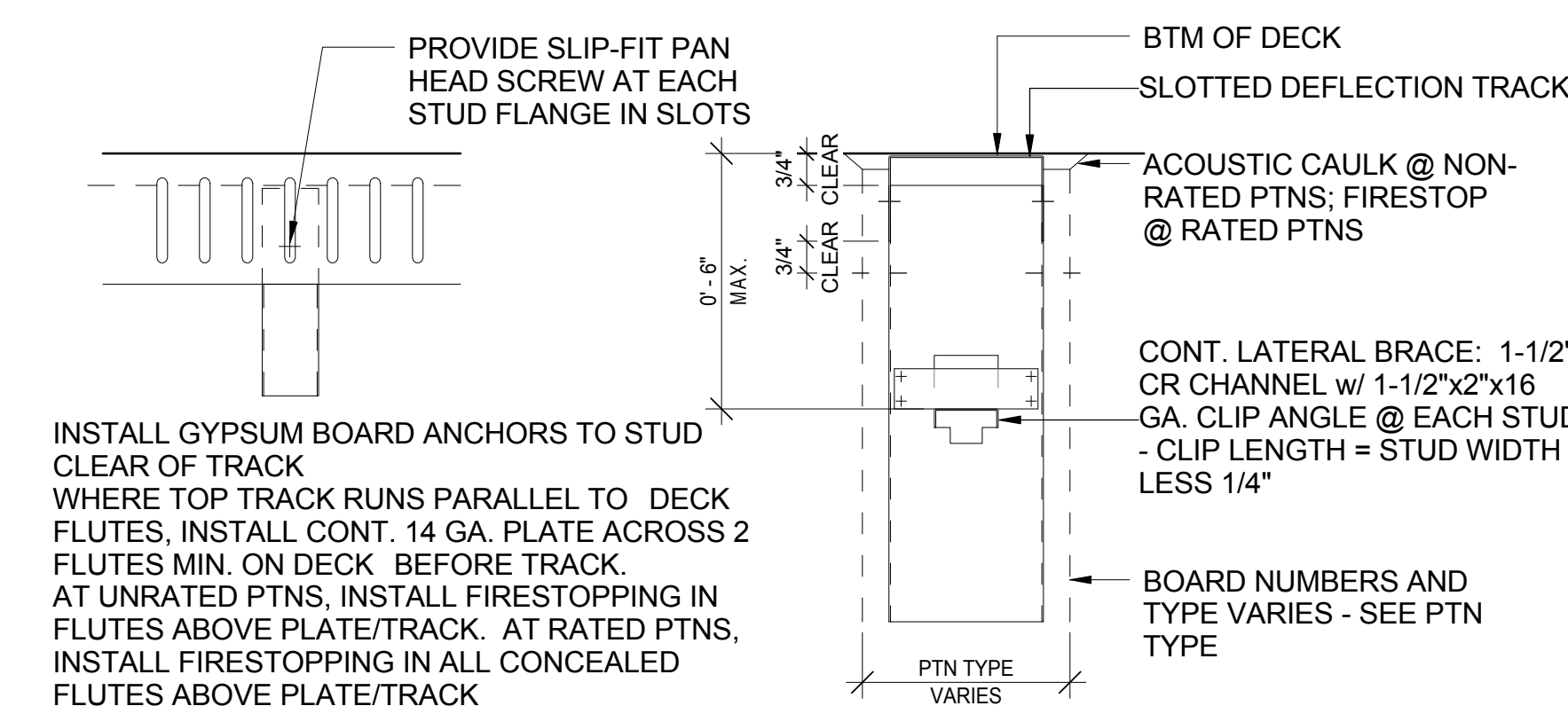
Dwg. 4 of 89

**CENTRAL ARKANSAS
VETERANS AFFAIRS
HEALTHCARE
SYSTEM**

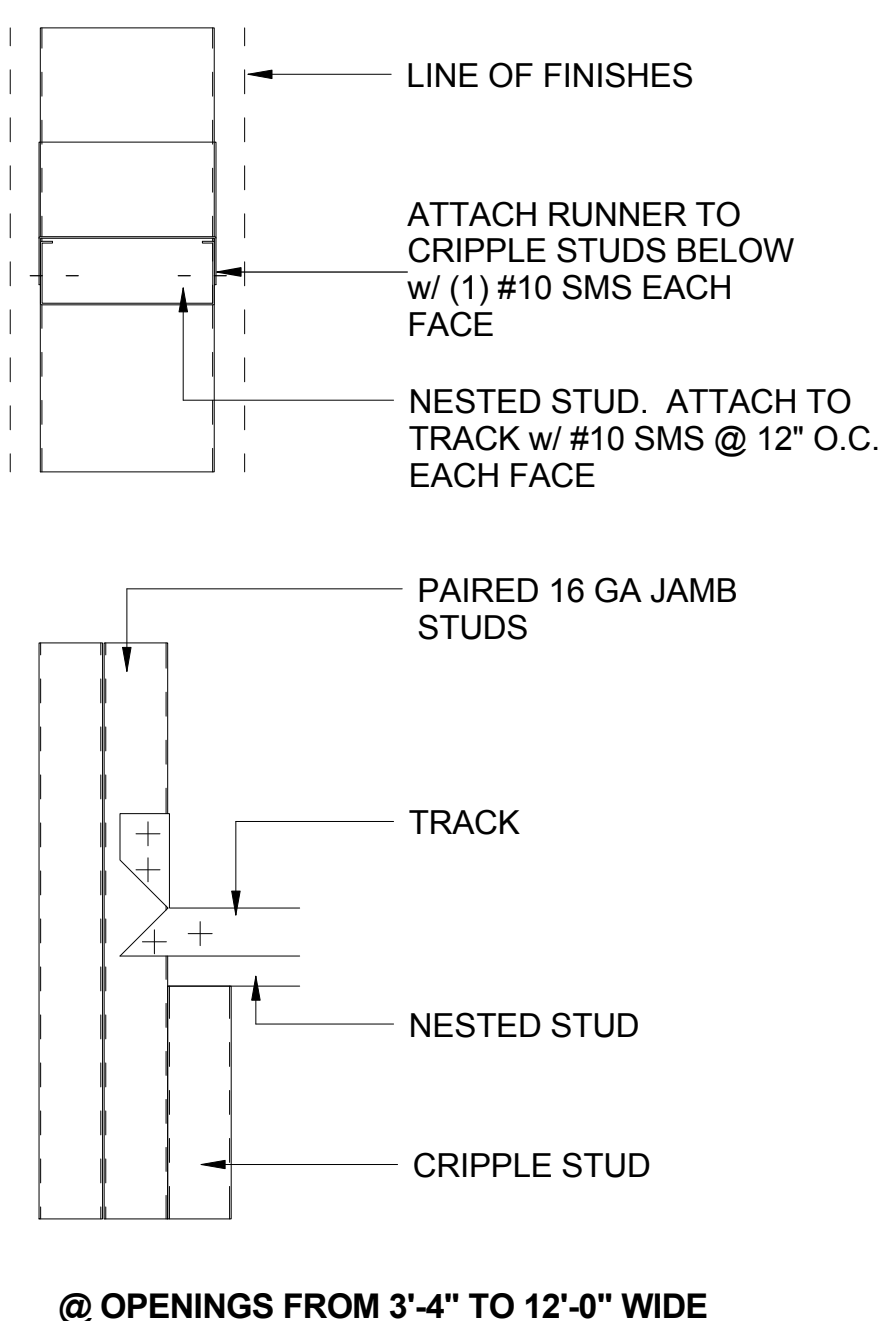




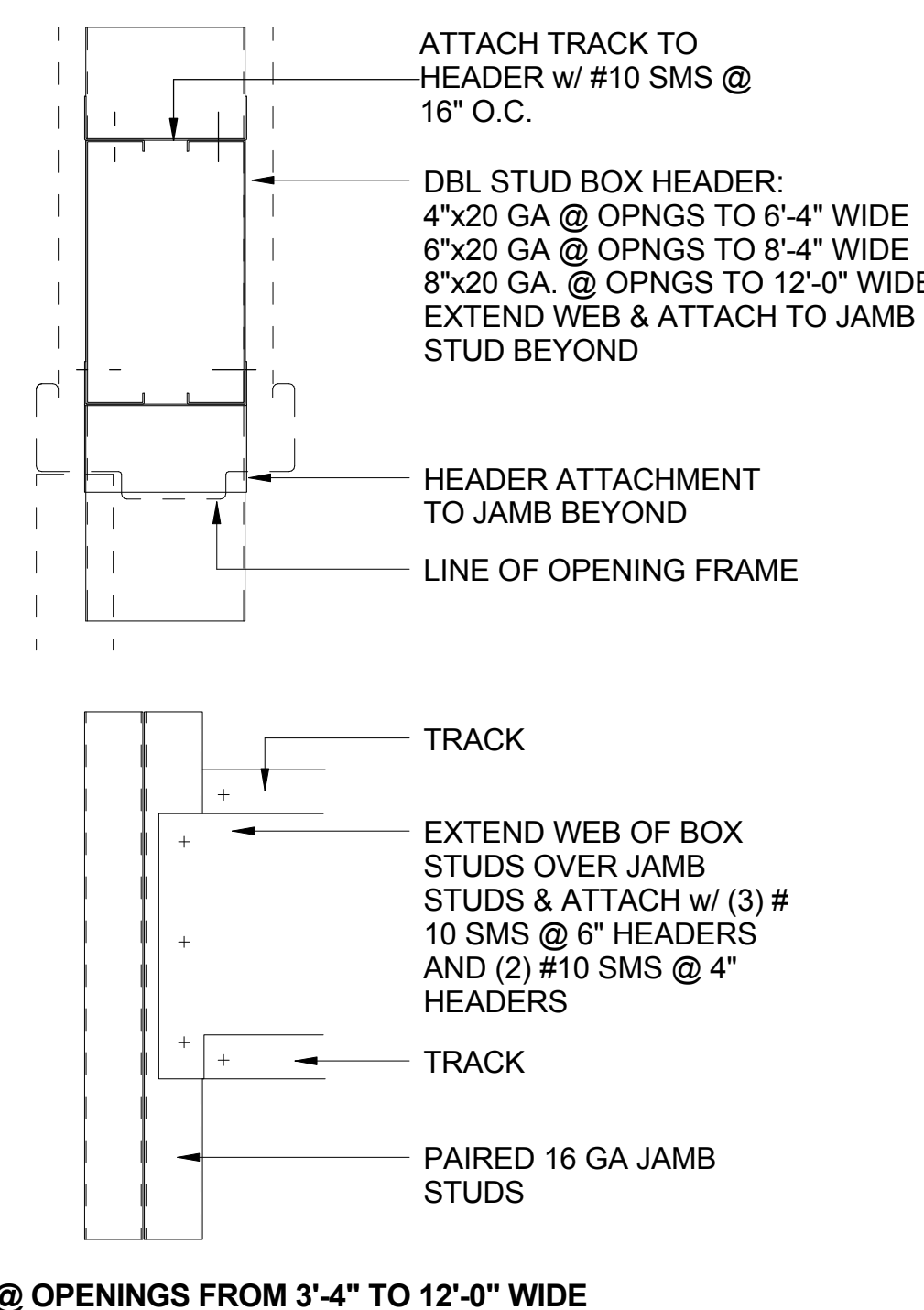
2B RATED PTN AT INTERSECTING BEAM
1" = 1'-0"



3D DEFLECTION TRACK (TYP @ FULL HT PTNS)
3" = 1'-0"



3F HEADER FRAMING @ STUD PTN OPENINGS



3F HEADER FRAMING @ STUD PTN OPENINGS

--	--	--	--	--	--	--	--	--	--	--	--	--	--	--	--	--	--	--	--	--	--	--	--	--	--	--	--	--	--	--	--	--	--	--	--	--	--	--	--	--	--	--	--	--	--	--	--	--	--	--	--	--	--	--	--	--	--	--	--	--	--	--	--	--	--	--	--	--	--	--	--	--	--	--	--	--	--	--	--	--	--	--	--	--	--	--	--	--	--	--	--	--	--	--	--	--	--	--	--	--	--	--	--	--	--	--	--	--	--	--	--	--	--	--	--	--	--	--	--	--	--	--	--	--	--	--	--	--	--	--	--	--	--	--	--	--	--	--	--	--	--	--	--	--	--	--	--	--	--	--	--	--	--	--	--	--	--	--	--	--	--	--	--	--	--	--	--	--	--	--	--	--	--	--	--	--	--	--	--	--	--	--	--	--	--	--	--	--	--	--	--	--	--	--	--	--	--	--	--	--	--	--	--	--	--	--	--	--	--	--	--	--	--	--	--	--	--	--	--	--	--	--	--	--	--	--	--	--	--	--	--	--	--	--	--	--	--	--	--	--	--	--	--	--	--	--	--	--	--	--	--	--	--	--	--	--	--	--	--	--	--	--	--	--	--	--	--	--	--	--	--	--	--	--	--	--	--	--	--	--	--	--	--	--	--	--	--	--	--	--	--	--	--	--	--	--	--	--	--	--	--	--	--	--	--	--	--	--	--	--	--	--	--	--	--	--	--	--	--	--	--	--	--	--	--	--	--	--	--	--	--	--	--	--	--	--	--	--	--	--	--	--	--	--	--	--	--	--	--	--	--	--	--	--	--	--	--	--	--	--	--	--	--	--	--	--	--	--	--	--	--	--	--	--	--	--	--	--	--	--	--	--	--	--	--	--	--	--	--	--	--	--	--	--	--	--	--	--	--	--	--	--	--	--	--	--	--	--	--	--	--	--	--	--	--	--	--	--	--	--	--	--	--	--	--	--	--	--	--	--	--	--	--	--	--	--	--	--	--	--	--	--	--	--	--	--	--	--	--	--	--	--	--	--	--	--	--	--	--	--	--	--	--	--	--	--	--	--	--	--	--	--	--	--	--	--	--	--	--	--	--	--	--	--	--	--	--	--	--	--	--	--	--	--	--	--	--	--	--	--	--	--	--	--	--	--	--	--	--	--	--	--	--	--	--	--	--	--	--	--	--	--	--	--	--	--	--	--	--	--	--	--	--	--	--	--	--	--	--	--	--	--	--	--	--	--	--	--	--	--	--	--	--	--	--	--	--	--	--	--	--	--	--	--	--	--	--	--	--	--	--	--	--	--	--	--	--	--	--	--	--	--	--	--	--	--	--	--	--	--	--	--	--	--	--	--	--	--	--	--	--	--	--	--	--	--	--	--	--	--	--	--	--	--	--	--	--	--	--	--	--	--	--	--	--	--	--	--	--	--	--	--	--	--	--	--	--	--	--	--	--	--	--	--	--	--	--	--	--	--	--	--	--	--	--	--	--	--	--	--	--	--	--	--	--	--	--	--	--	--	--	--	--	--	--	--	--	--	--	--	--	--	--	--	--	--	--	--	--	--	--	--	--	--	--	--	--	--	--	--	--	--	--	--	--	--	--	--	--	--	--	--	--	--	--	--	--	--	--	--	--	--	--	--	--	--	--	--	--	--	--	--	--	--	--	--	--	--	--	--	--	--	--	--	--	--	--	--	--	--	--	--	--	--	--	--	--	--	--	--	--	--	--	--	--	--	--	--	--	--	--	--	--	--	--	--	--	--	--	--	--	--	--	--	--	--	--	--	--	--	--	--	--	--	--	--	--	--	--	--	--	--	--	--	--	--	--	--	--	--	--	--	--	--	--	--	--	--	--	--	--	--	--	--	--	--	--	--	--	--	--	--	--	--	--	--	--	--	--	--	--	--	--	--	--	--	--	--	--	--	--	--	--	--	--	--	--	--	--	--	--	--	--	--	--	--	--	--	--	--	--	--	--	--	--	--	--	--	--	--	--	--	--	--	--	--	--	--	--	--	--	--	--	--	--	--	--	--	--	--	--	--	--	--	--	--	--	--	--	--	--	--	--	--	--	--	--	--	--	--	--	--	--	--	--	--	--	--	--	--	--	--	--	--	--	--	--	--	--	--	--	--	--	--	--	--	--	--	--	--	--	--	--	--	--	--	--	--	--	--	--	--	--	--	--	--	--	--	--	--	--	--	--	--	--	--	--	--	--	--	--	--	--	--	--	--	--	--	--	--	--	--	--	--	--	--	--	--	--	--	--	--	--	--	--	--	--	--	--	--	--	--	--	--	--	--	--	--	--	--	--	--	--	--	--	--	--	--	--	--	--	--	--	--	--	--	--	--	--	--	--	--	--	--	--	--	--	--	--	--	--	--	--	--	--	--	--	--	--	--	--	--	--	--	--	--	--	--	--	--	--	--	--	--	--	--	--	--	--	--	--	--	--	--	--	--	--	--	--	--	--	--	--	--	--	--	--	--	--	--	--	--	--	--	--	--	--	--	--	--	--	--	--	--	--	--	--	--	--	--	--	--	--	--	--	--	--	--	--	--	--	--	--	--	--	--	--	--	--	--	--	--	--	--	--	--	--	--	--	--	--	--	--	--	--	--	--	--	--	--	--	--	--	--	--	--	--	--	--	--	--	--	--	--	--	--	--	--	--	--	--	--	--	--	--	--	--	--	--	--	--	--	--	--	--	--	--	--	--	--	--	--	--	--	--	--	--	--	--	--	--	--	--	--	--	--	--	--	--	--	--	--	--	--	--	--	--	--	--	--	--	--	--	--	--	--	--	--	--	--	--	--	--	--	--	--	--	--	--	--	--	--	--	--	--	--	--	--	--	--	--	--	--	--	--	--	--	--	--	--	--	--	--	--	--	--	--	--	--	--	--	--	--	--	--	--	--	--	--	--	--	--	--	--	--	--	--	--	--	--	--	--	--	--	--	--	--	--	--	--	--	--	--	--	--	--	--	--	--	--	--	--	--	--	--	--	--	--	--	--	--	--	--	--	--	--	--	--	--	--	--	--	--	--	--	--	--	--	--	--	--	--	--	--	--	--	--	--	--	--	--	--	--	--	--	--	--	--	--	--	--	--	--	--	--	--	--	--	--	--	--	--	--	--	--	--	--	--	--	--	--	--	--	--	--	--	--	--	--	--	--	--	--	--	--	--	--	--	--	--	--	--	--	--	--	--	--	--	--	--	--	--	--	--	--	--	--	--	--	--	--	--	--	--	--	--	--	--	--	--	--	--	--	--	--	--	--	--	--	--	--	--	--	--	--	--	--	--	--	--	--	--	--	--	--	--	--	--	--	--	--	--	--	--	--	--	--	--	--	--	--	--	--	--	--	--	--	--	--	--	--	--	--	--	--	--	--	--	--	--	--	--	--	--	--	--	--	--	--	--	--	--	--	--	--	--	--	--	--	--

A
three inches = one foot
1
0
2
one inch = one foot
0
2
one half inch = one foot
0
4
three quarters inch = one foot
0
8
one quarter inch = one foot
0
16
one eighth inch = one foot

B
three inches = one foot
1
0
2
one inch = one foot
0
2
one half inch = one foot
0
4
three quarters inch = one foot
0
8
one quarter inch = one foot
0
16
one eighth inch = one foot

C
three quarters inch = one foot
2
0
4
one half inch = one foot
0
8
three eighths inch = one foot
0
16
one quarter inch = one foot
0
32
one eighth inch = one foot

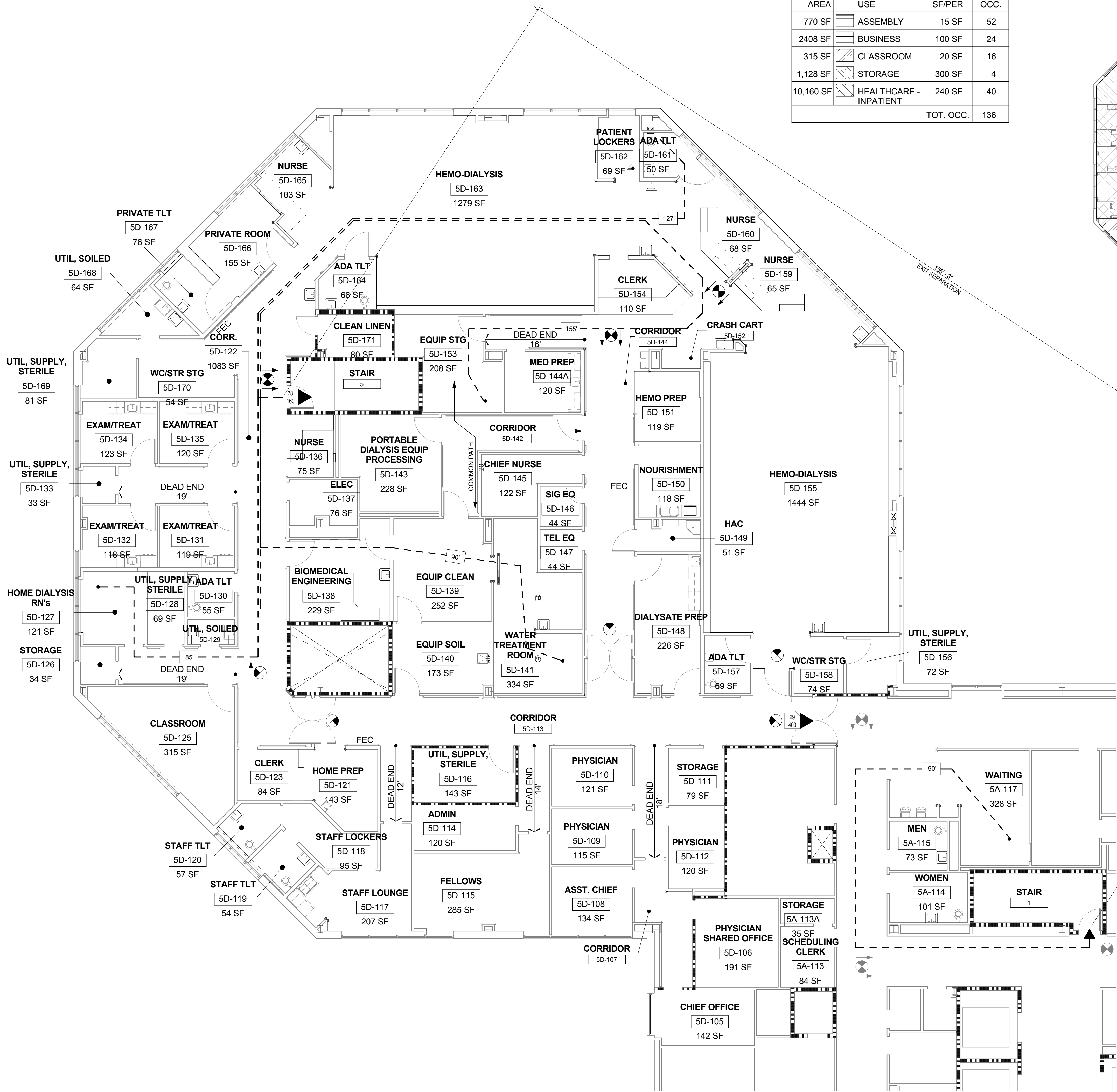
D
one half inch = one foot
4
0
8
three quarters inch = one foot
0
16
one quarter inch = one foot
0
32
one eighth inch = one foot

E
one eighth inch = one foot
16
0
32
one quarter inch = one foot
0
64
one half inch = one foot
0
128
three quarters inch = one foot
0
256
one inch = one foot

AREA	USE	SF/PER	OCC.
770 SF	ASSEMBLY	15 SF	52
2408 SF	BUSINESS	100 SF	24
315 SF	CLASSROOM	20 SF	16
1,128 SF	STORAGE	300 SF	4
10,160 SF	HEALTHCARE - INPATIENT	240 SF	40
		TOT. OCC.	136



3B LIFE SAFETY PLAN OCCUPANCY
1" = 20'-0"



6E LIFE SAFETY PLAN
1/8" = 1'-0"

MEANS OF EGRESS LEGEND

DISTANCES

- COMMON PATH OF TRAVEL (100 FT. MAX) → 100'
- DEAD END CORRIDOR (50 FT. MAX) → 50'
- TRAVEL DISTANCE → 100'
- MAX DIAGONAL DISTANCE → 100'
- EXIT SEPARATION → 100'

LEVEL EXIT LOAD / CAPACITY

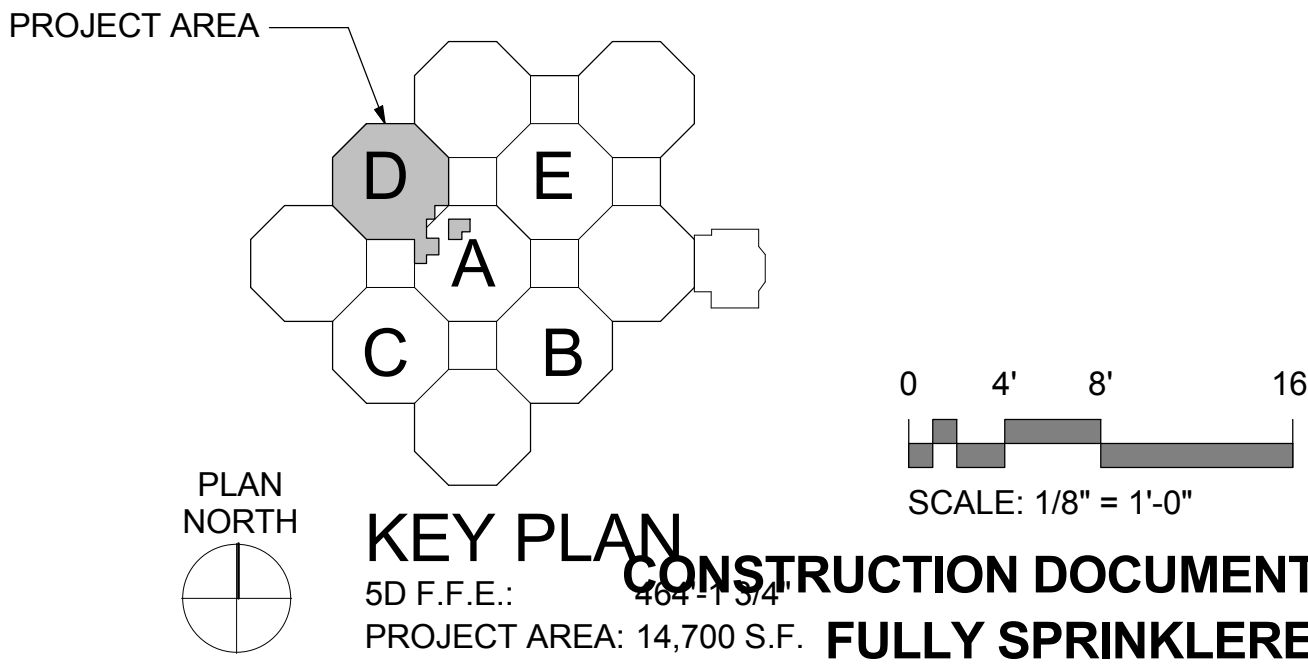
LEVEL EXIT LOAD / CAPACITY @ CORRIDOR
EXIT CAPACITY = CLEAR OPENING X LOAD FACTOR

LEVEL EXIT LOAD / CAPACITY @ DOORWAY
EXIT CAPACITY = (DOOR WIDTH - REDUCTION TO ACHIEVE CLEAR OPENING) X LOAD FACTOR

EXIT SIGN

- TAIL ON SYMBOL INDICATES WALL MOUNTED
- ARROW SHOWS DIRECTION INDICATOR REQ.
- EXIT TAKES DIRECTION OF FILLED AREA
- EXIT SIGN SYMBOL

OCCUPANCY CLASSIFICATIONS		
PRIMARY OCCUPANCY: HEALTHCARE - INPATIENT TREATMENT		
CLASSIFICATION (LSC - CHAPTER 6)	FUNCTION	LOAD FACTOR (LSC TABLE 7.3.1.2)
HEALTHCARE	INPATIENT TREATMENT	240 SF / PERSON - GROSS
ASSEMBLY	LESS CON.	15 SF / PERSON
BUSINESS	OFFICES	100 SF / PERSON
CLASSROOM	TRAINING	20 SF / PERSON
STORAGE	STORAGE	300 SF / PERSON
(6.1.14.1.3) WHERE INCIDENTAL TO ANOTHER OCCUPANCY, AREAS SHALL BE PERMITTED TO BE CONSIDERED PART OF THE PREDOMINANT OCCUPANCY...		
BUILDING DATA		
CONSTRUCTION TYPE: IB - EXISTING STEEL FRAME & COMP. SLAB		
BUILDING AREAS		
ACTUAL AREA:		ALLOWABLE AREA PER FLOOR: A + B + C = D
FLOOR NO.:	USE / OCC.:	(A) ALLOWABLE FLOOR AREA (TABLE 503) (B) FRONTAGE INCREASE (IBC 506.2) (C) SPRINKLER INCREASE (IBC 506.3) (D) INCREASED ALLOWABLE AREA / FLR
5th FLOOR	I-2	72,914
UNLIMITED		
RENOVATED AREA		
POD 5D	I-2	15,500
TOTAL RENOVATED AREA (GROSS) - NO CHANGE IN OCCUPANCY CLASSIFICATION AND NO CHANGE IN TOTAL OCCUPANCY		
OCCUPANCY LOAD		
TOTAL OCCUPANCY: NO CHANGE IN USE: EXISTING I-1 TO NEW I-1		15,500 SF x 100 SF/PERSON = 155 PERSON OCCUPANCY
PER EXIT OCC. (155/2)		78 PER EXIT
FIRE RESISTANCE RATINGS		
BUILDING ELEMENTS: LSC TABLE A.8.2.1.2		
STRUCTURAL FRAME:	ALLOW. (HRS)	CONST.
BEARING WALLS: EXTERIOR:	2	STEEL W/ 2HR SPRAY FP
INTERIOR:	2	NA
NON-BEARING WALLS: EXTERIOR:	2	-
INTERIOR:	0	-
FLOOR CONSTRUCTION: (INCLUDING SUPPORTING BEAMS AND JOISTS)	2	6 1/4" CONC. ON MTL. DECK
ROOF CONSTRUCTION: (INCLUDING SUPPORTING BEAMS AND JOISTS)	2	6 1/4" CONC. ON MTL. DECK
FIRE SEPARATIONS:		
	RATING (HRS)	REMARKS
VERTICAL SHAFTS: (8.3.4.2)	2HR	
WALLS & PENETRATIONS:	SMOKE, 1HR, 2HR	SEE PLANS
BUILDING SEPERATION	NA	
CORRIDOR WALLS	RESIST PASSAGE OF SMOKE	
EXITS:		
HORIZONTAL EXIT:	2 HR	
INCIDENTAL USES:		
ASSEMBLY, LESS CONCENTRATED	0	
BUSINESS	0	
EDUCATION, CLASSROOM	0	
STORAGE	1 HR	> 100 SF
SMOKE SEPARATIONS:		
	ALLOWED	PROVIDED
SMOKE COMPARTMENT	22,000 SF	14,500 SF



CONSULTANTS:		ARCHITECT/ENGINEERS:		Drawing Title LIFE SAFETY PLAN	Project Title IMPROVE 5D DIALYSIS FUNCTIONAL DEFICIENCIES
Revisions:		BES DESIGN/BUILD, LLC 766 Middle St. Fairhope, AL 36532 Phone: 251.990.5778 Fax: 251.990.3716		Approved: Project Director	Location 4300 WEST 7TH STREET LITTLE ROCK, AR 72205
Date		REGISTERED ARCHITECT REBECCAH WHITEHEAD 10-31-14 STATE OF ARKANSAS		Approver	Date 2014.10.31
					Drawn GPS
					Checked ROW
					Dwg. 7 of 89