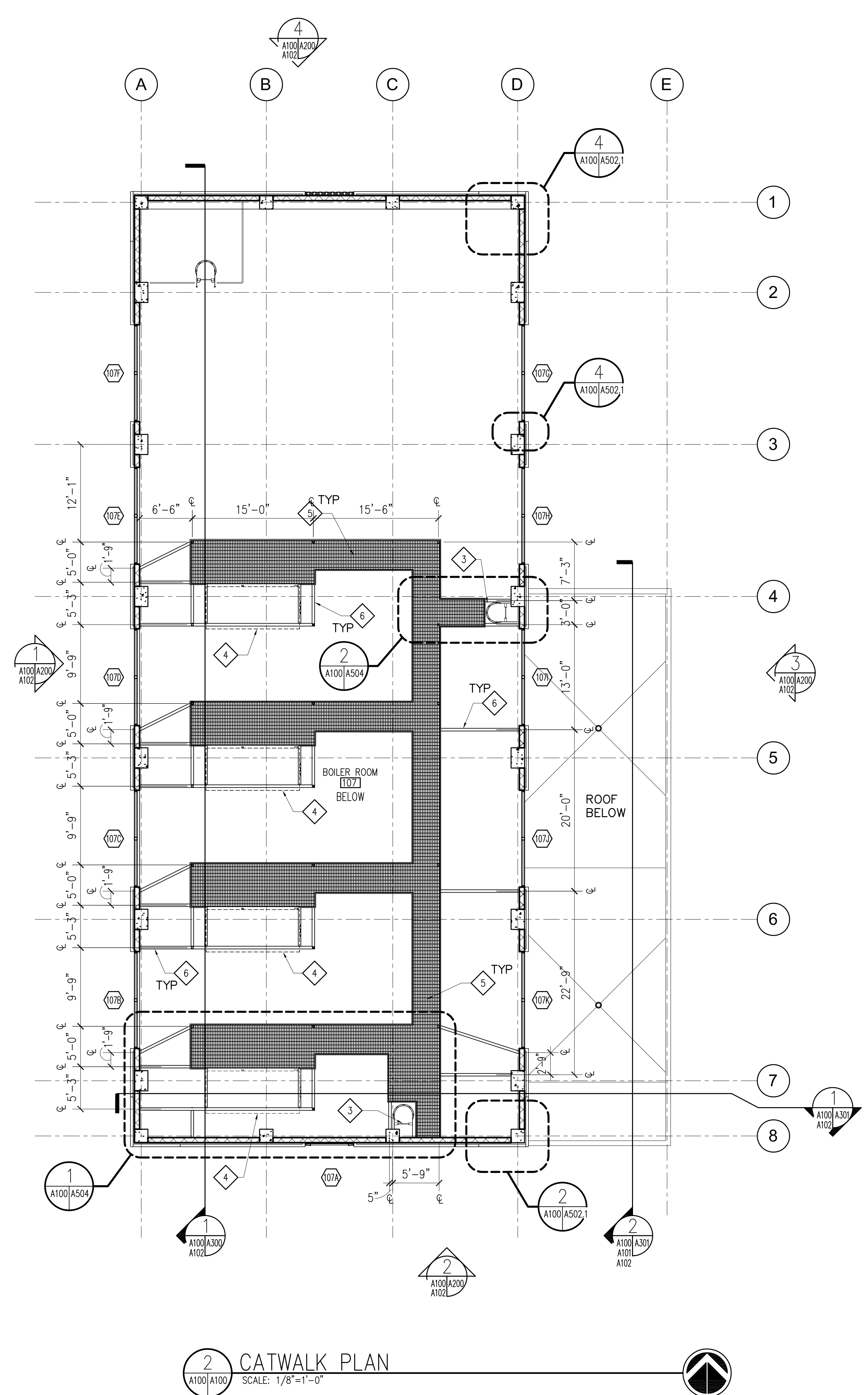
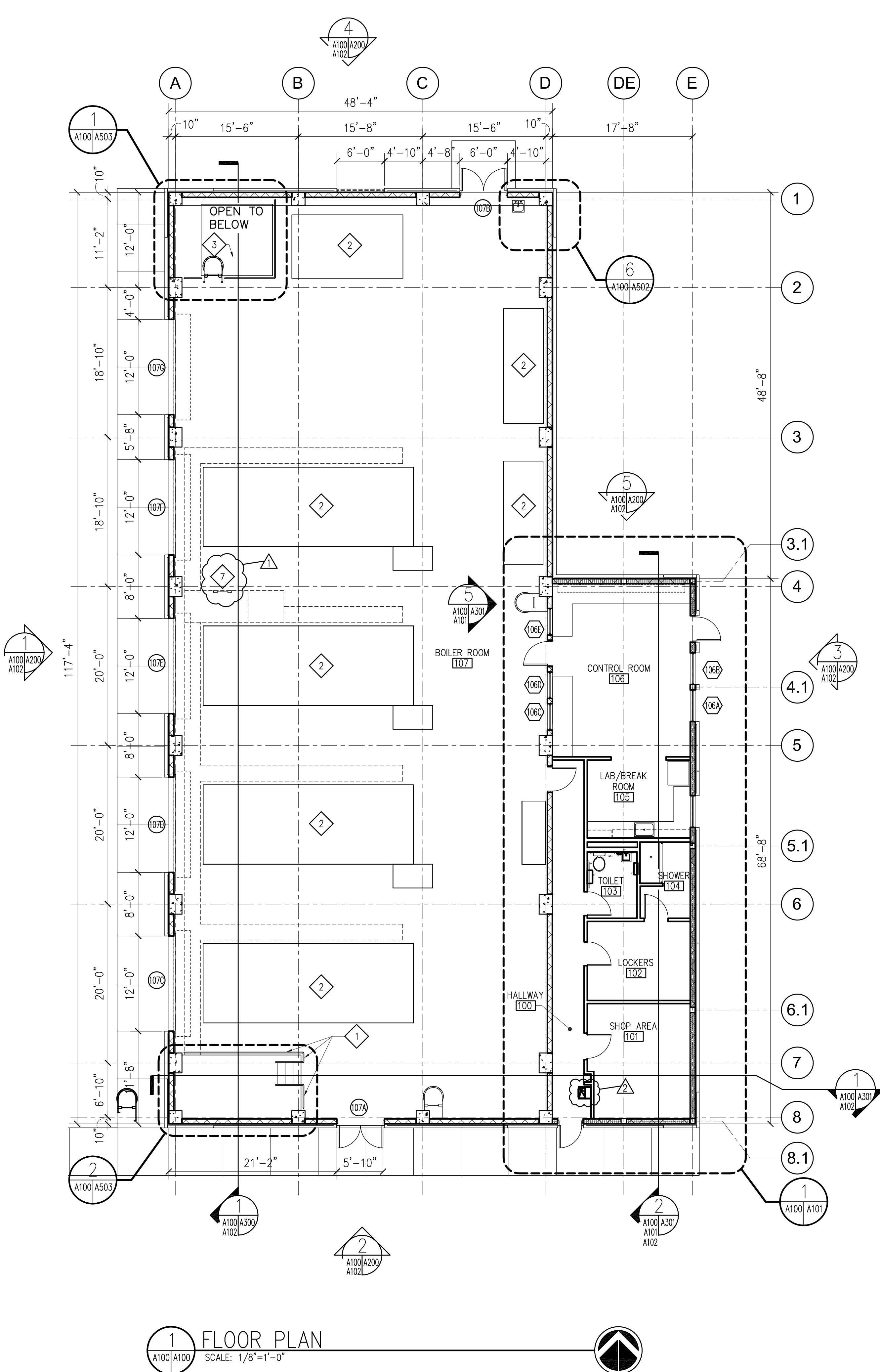


three inches = one foot  
 one and one half inches = one foot  
 one inch = one foot  
 three quarters inch = one foot  
 one half inch = one foot  
 three quarters inch = one foot  
 one half inch = one foot  
 three eighths inch = one foot  
 one quarter inch = one foot  
 one eighth inch = one foot  
 one eighth inch = one foot

- KEYNOTES:**
- 1 42" HIGH 1 1/2" DIA STEEL GUARDRAIL SEE A/503
  - 2 ELEVATED CONC PAD SEE STRUCTURAL
  - 3 PRE-FABRICATED STEEL LADDER WITH PROTECTIVE CAGE
  - 4 MECHANICAL HVAC UNIT SEE MECHANICAL
  - 5 METAL CATWALK SEE STRUCTURAL
  - 6 STEEL CATWALK STRUCTURAL SUPPORTS SEE STRUCTURAL
  - 7 LADDER WITH RUNG MOUNTED TELESCOPING SAFETY POST - SEE S/201 & A/300



FINAL DESIGN  
 APPROVED FOR CONSTRUCTION

CONSULTANTS:  ARCHITECT-OF-RECORD THOMAS H. GYLLSTROM FL REG. NO. AR0009998	ARCHITECT/ENGINEERS: <b>AKEA</b> INC. 3603 NW 98th Street, Suite B Gainesville, FL 32606 Phone: (352) 474-6124 Fax: (352) 553-4437 COA: FL #26693 AKEA Project No. 083-14	Drawing Title ARCHITECTURAL FLOOR PLAN	Project Title REPLACE BOILERS - FCA D, ENERGY AT THE MALCOM RANDALL VAMC	Project Number 573-14-600	Office of Construction and Facilities Management  Department of Veterans Affairs
		Approved: Project Director	Location GAINESVILLE, FLORIDA	Building Number	
REV 2 - ADDENDUM 3 9/08/2017 REV 1 - ADDENDUM 1 8/03/2016 Revisions: Date		Date JULY 8, 2016	Checked THG	Drawn JG	