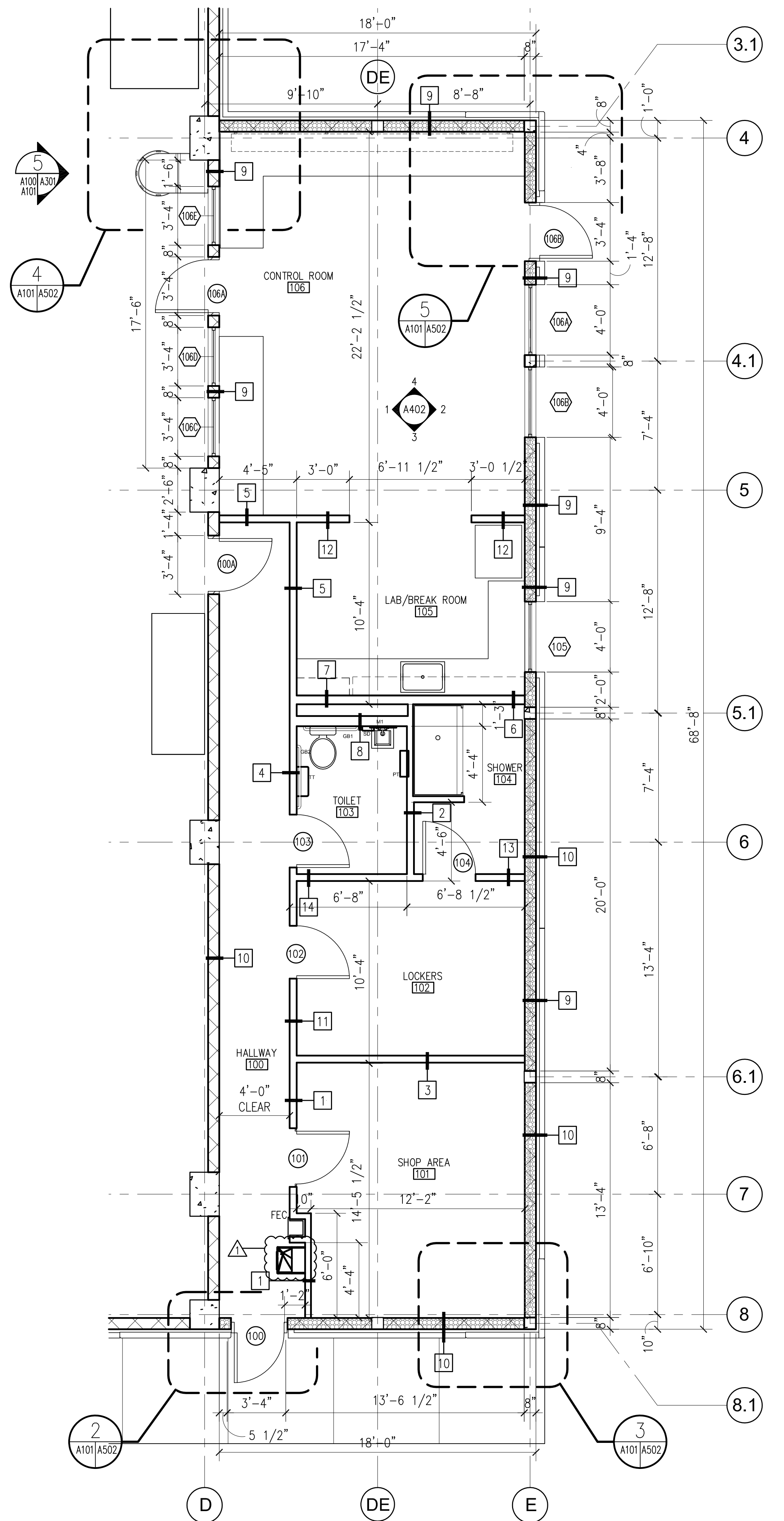
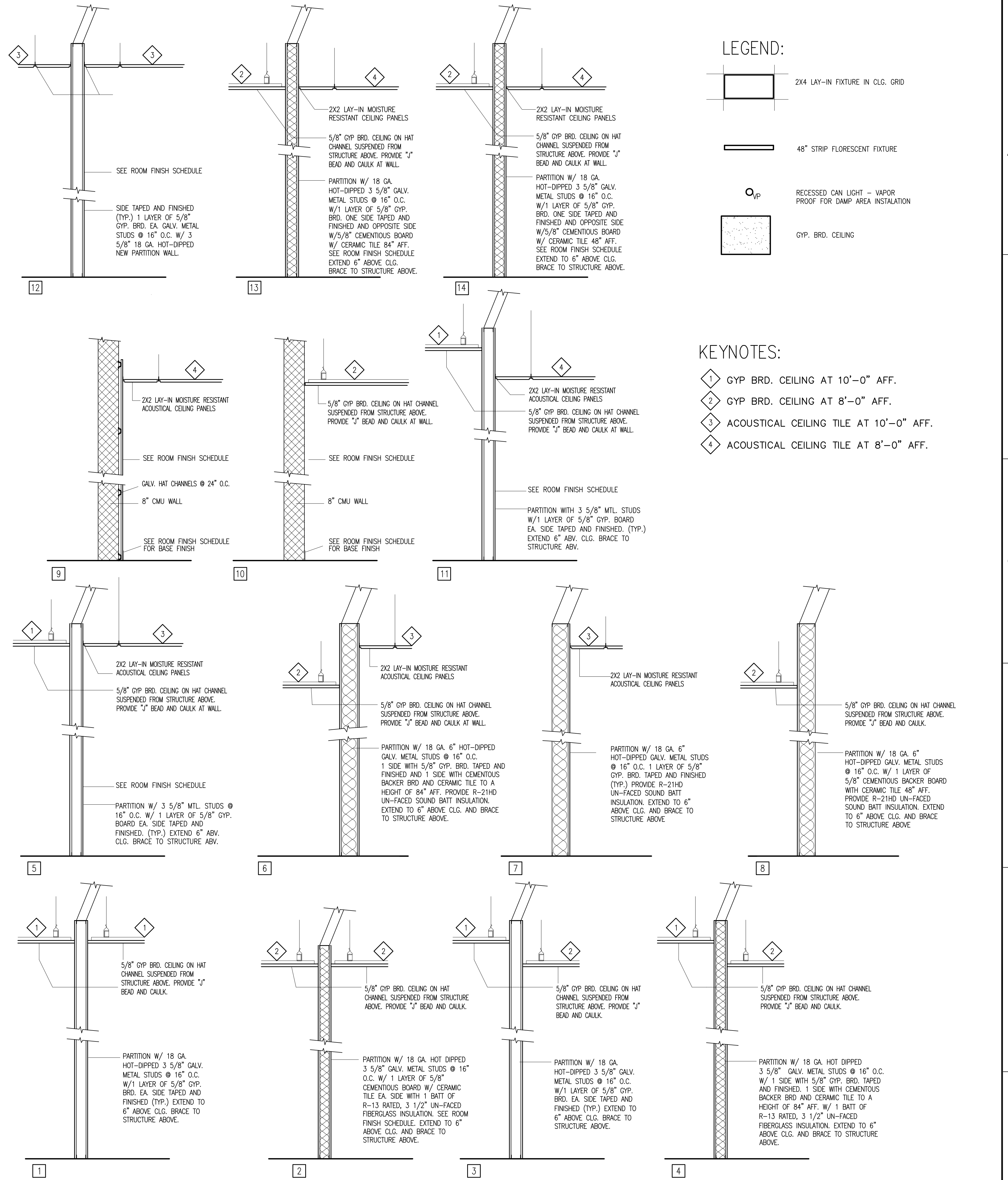


2 ENLARGED REFLECTED CEILING PLAN
A100/A101 SCALE: 1/4"=1'-0"



1 ENLARGED FLOOR PLAN
A101/A502 SCALE: 1/4"=1'-0"



PARTITION TYPES
SCALE: 1/2"=1'-0"

- LEGEND:**
- 2X4 LAY-IN FIXTURE IN CLG. GRID
 - 48" STRIP FLORESCENT FIXTURE
 - RECESSED CAN LIGHT - VAPOR PROOF FOR DAMP AREA INSTALLATION
 - GYP. BRD. CEILING

- KEYNOTES:**
- 1 GYP. BRD. CEILING AT 10'-0" AFF.
 - 2 GYP. BRD. CEILING AT 8'-0" AFF.
 - 3 ACOUSTICAL CEILING TILE AT 10'-0" AFF.
 - 4 ACOUSTICAL CEILING TILE AT 8'-0" AFF.

FINAL DESIGN
APPROVED FOR CONSTRUCTION

CONSULTANTS: 		ARCHITECT/ENGINEERS: AKEA INC. 3603 NW 98th Street, Suite B Gainesville, FL 32606 Phone: (352) 474-6124 Fax: (352) 553-4437 COA: FL #26693 AKEA Project No. 083-14		Drawing Title ENLARGED PLAN - REFLECTED CEILING PLAN - AND PARTITION TYPES		Project Title REPLACE BOILERS - FCA D, ENERGY AT THE MALCOM RANDALL VAMC		Project Number 573-14-600		Office of Construction and Facilities Management	
Approved: Project Director		Location GAINESVILLE, FLORIDA		Drawing Number A101		Date JULY 8, 2016		Checked THG		Drawn JG	
REV 1 - ADDENDUM 3 Revisions:		ARCHITECT-OF-RECORD THOMAS H. GYLLSTROM FL REG. NO. ARO009998		Date 9/08/2017		Department of Veterans Affairs					

three inches = one foot
 one and one half inches = one foot
 one inch = one foot
 three quarters inch = one foot
 one half inch = one foot
 three quarters inch = one foot
 one half inch = one foot
 one quarter inch = one foot
 three eighths inch = one foot
 one eighth inch = one foot
 one quarter inch = one foot
 one eighth inch = one foot