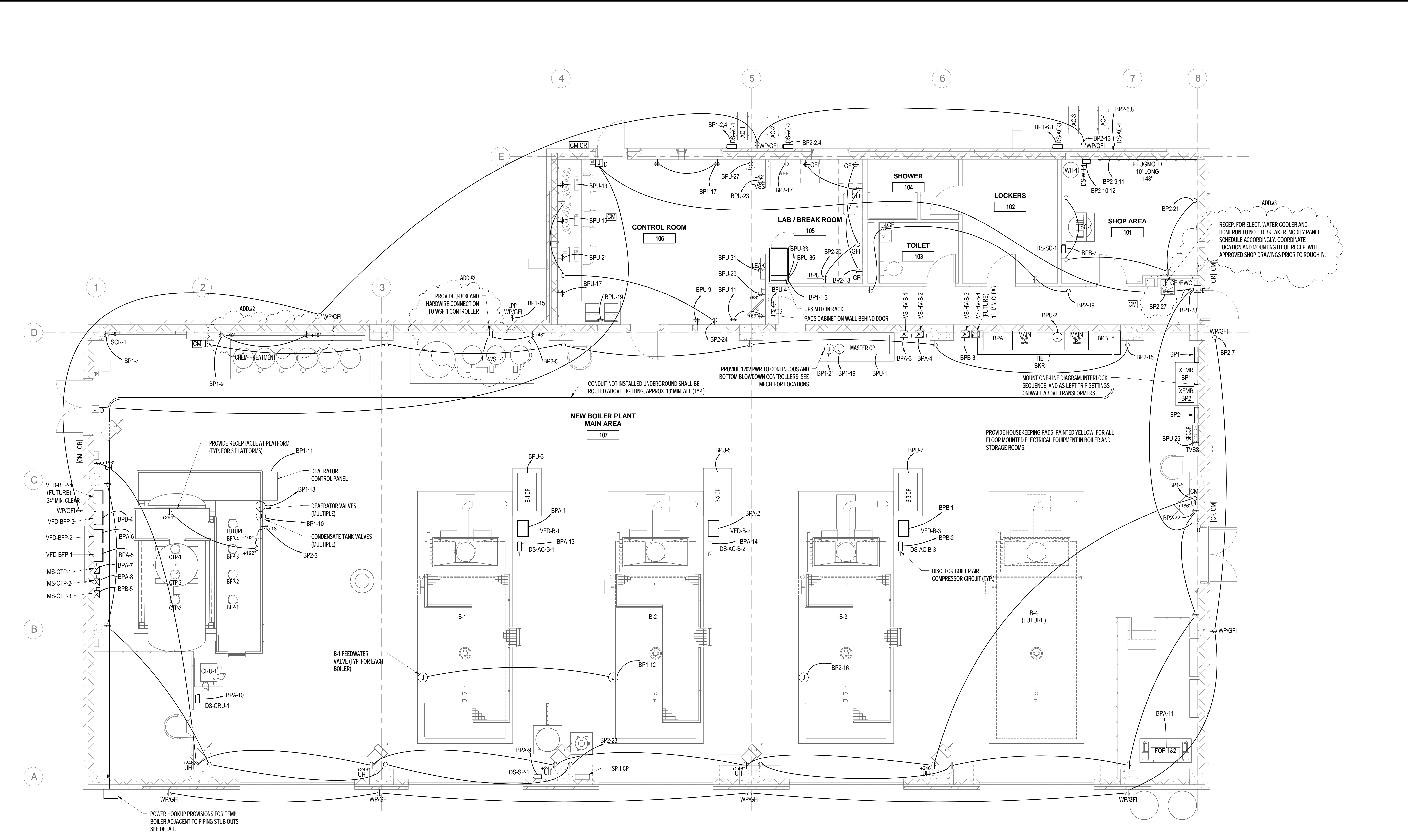


three inches = one foot
 one and one half inches = one foot
 one inch = one foot
 three quarters inch = one foot
 one half inch = one foot
 three eighths inch = one foot
 one quarter inch = one foot
 one eighth inch = one foot



1 BOILER PLANT - LOWER - POWER
 1/4" = 1'-0"

FINAL DESIGN
 APPROVED FOR CONSTRUCTION

ADDENDUM #3: ADD WATER COOLER CIRCUIT 9/8/2017 ADDENDUM #2: WSF-1 AND CHEM TREATMENT CIRCUITING MODIFICATION 08/30/2017 Revisions:	CONSULTANTS: ENGINEER-OF-RECORD CHAD J. FRALICK FL P.E. NO. 73811	ARCHITECT/ENGINEERS: AKEA INC. 3603 NW 98th Street, Suite B Gainesville, FL 32606 Phone: (352) 474-6124 Fax: (352) 553-4437 COA: FL #26693 AKEA Project No. 083-14	Drawing Title BOILER PLANT - GROUND FLOOR - POWER	Project Title REPLACE BOILERS - FCA D, ENERGY AT THE MALCOM RANDALL VAMC	Project Number 573-14-600
			Approved: Project Director	Location GAINESVILLE, FLORIDA	Building Number
Date JULY 8, 2016	Checked CJF	Drawn CJF	Drawing Number EP101	Office of Construction and Facilities Management Department of Veterans Affairs	