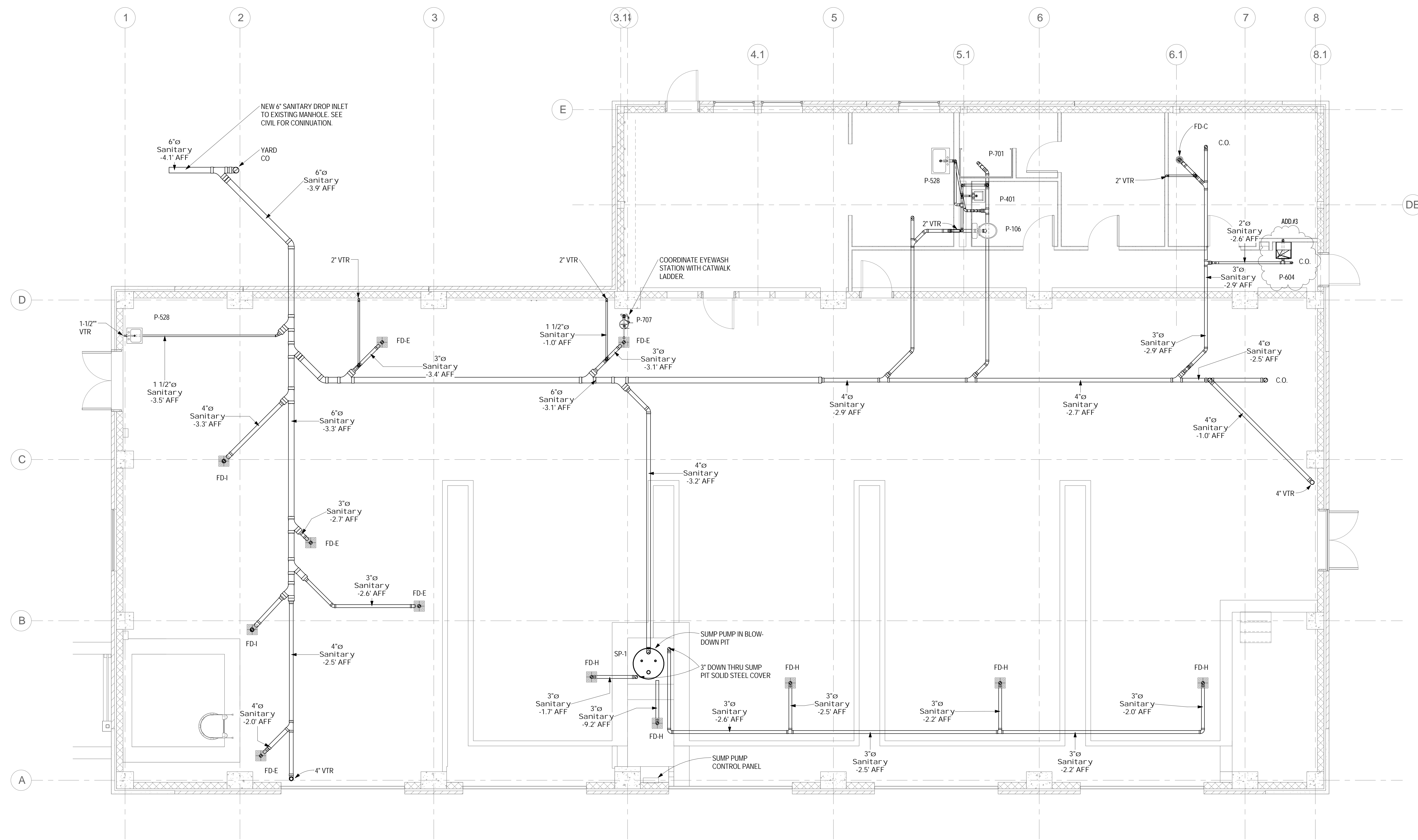


three inches = one foot  
 one and one half inches = one foot  
 one inch = one foot  
 three quarters inch = one foot  
 one half inch = one foot  
 three eighths inch = one foot  
 one quarter inch = one foot  
 one eighth inch = one foot



**PLUMBING NEW SANITARY PIPING PLAN**  
 1/4" = 1'-0"

FINAL DESIGN  
 APPROVED FOR CONSTRUCTION

<b>CONSULTANTS:</b>  		<b>ENGINEER-OF-RECORD:</b> FL P.E. NO. 70349 STEPHEN T. STEFFE		<b>ARCHITECT/ENGINEERS:</b> <b>AKEA</b> INC. 3603 NW 98th Street, Suite B Gainesville, FL 32606 Phone: (352) 474-6124 Fax: (352) 553-4437 COA: FL #26693 AKEA Project No. 083-14		Drawing Title <b>PLUMBING NEW SANITARY PIPING PLAN</b>		Project Title <b>REPLACE BOILERS - FCA D, ENERGY AT THE MALCOM RANDALL VAMC</b>		Project Number <b>573-14-600</b> Building Number		Office of Construction and Facilities Management Department of Veterans Affairs	
ADDENDUM #3: ADD WATER COOLER 9/8/2017						Approved: Project Director		Location <b>GAINESVILLE, FLORIDA</b>		Drawing Number <b>PL200</b>			
<b>Revisions:</b> Date								Date <b>JULY 8, 2016</b>		Checked STS			Drawn CRR