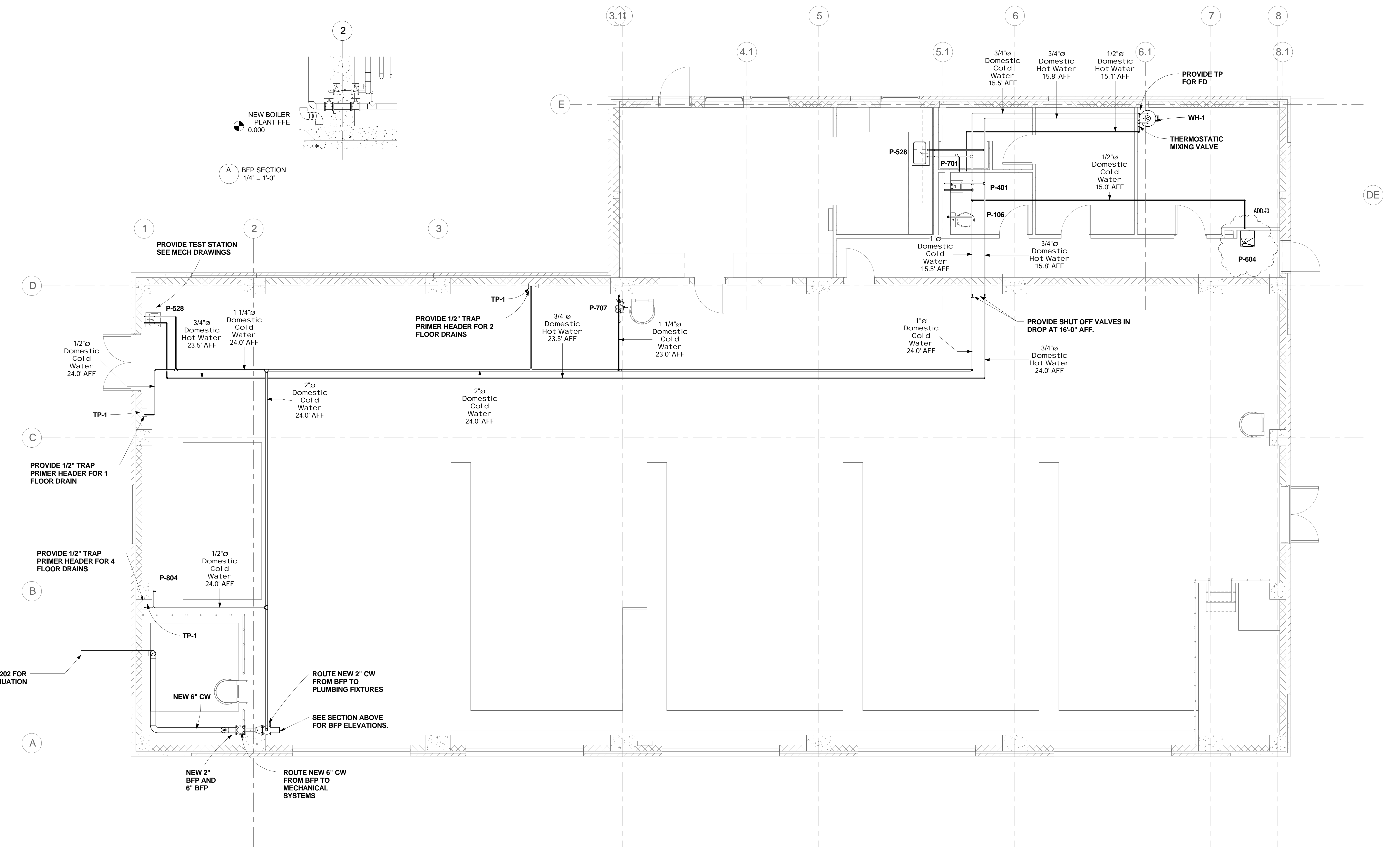


three inches = one foot
 one and one half inches = one foot
 one inch = one foot
 three quarters inch = one foot
 one half inch = one foot
 three eighths inch = one foot
 one quarter inch = one foot
 one eighth inch = one foot



PLUMBING NEW WATER PIPING PLAN
 1/4" = 1'-0"

FINAL DESIGN
 APPROVED FOR CONSTRUCTION

ADDENDUM #3: ADD WATER COOLER 9/8/2017	CONSULTANTS:	ENGINEER-OF-RECORD STEPHEN T. STEFFE FL P.E. NO. 70349	ARCHITECT/ENGINEERS: AKEA INC. 3603 NW 98th Street, Suite B Gainesville, FL 32606 Phone: (352) 474-6124 Fax: (352) 553-4437 COA: FL #26693 AKEA Project No. 083-14	Drawing Title PLUMBING NEW WATER PIPING PLAN	Project Title REPLACE BOILERS - FCA D, ENERGY AT THE MALCOM RANDALL VAMC	Project Number 573-14-600 Building Number	Office of Construction and Facilities Management	
				Approved: Project Director	Location GAINESVILLE, FLORIDA	Drawing Number PL201		Date JULY 8, 2016
Revisions:	Date							