

CONSULTANTS:



smith&boucher
ENGINEERS

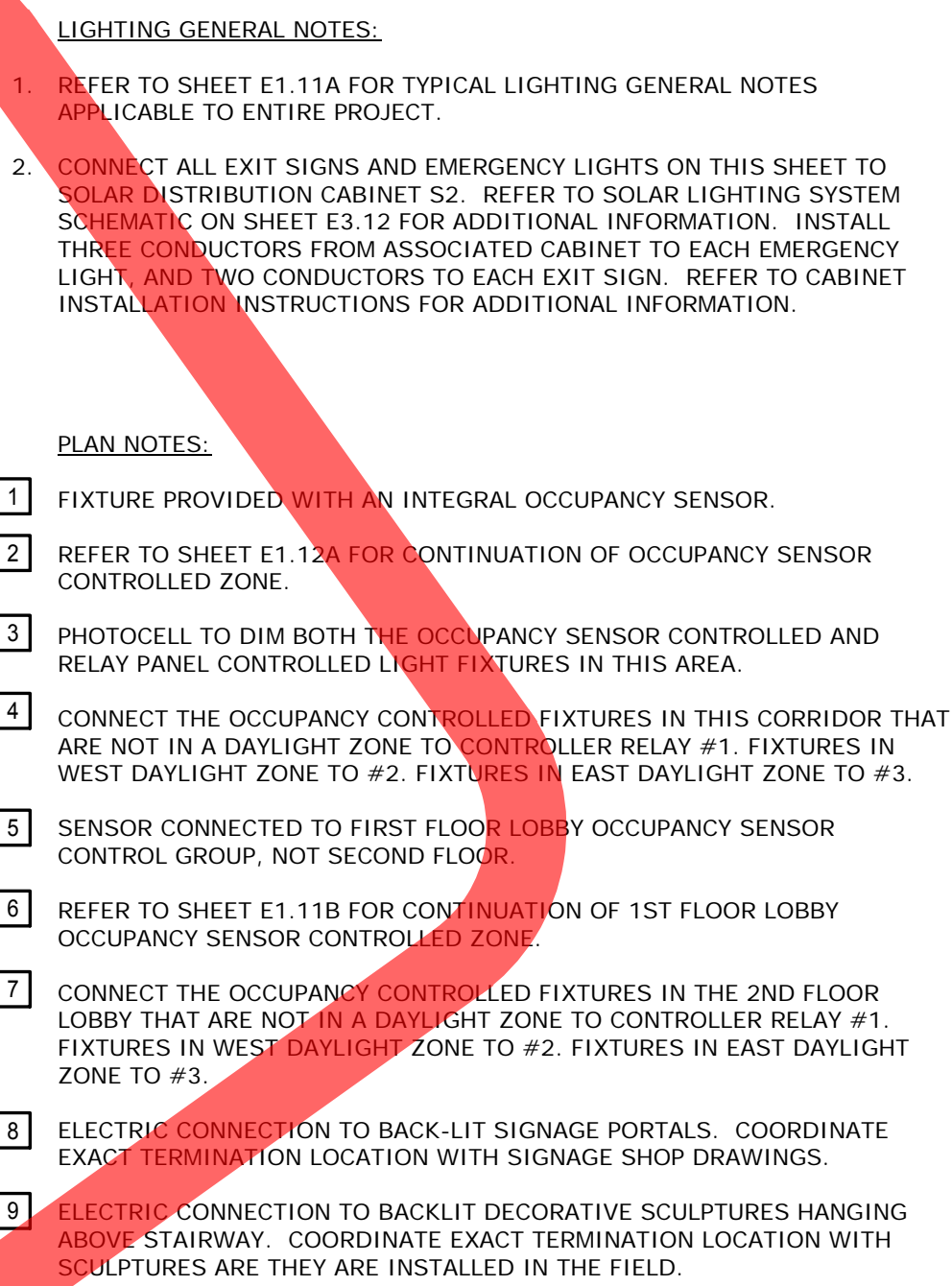
25501 west valley parkway, suite 200 olathe, ks 66061
phone 913.345.2127 fax 913.345.0617
project number 1525600

Drawing Title:
**SECOND FLOOR PLAN - AREA B -
LIGHTING**

Approved: Andy Lamendola

Project Status:
100% CONSTRUCTION DOCUMENTS

Project Title: VA SAN JOSE COMMUNITY BASED OUTPATIENT CLINIC			Project Number: VA-101-13-R-0077		
			Building Number:		
Location: 5815 SILVER CREEK VALLEY PLACE, SAN JOSE, CA 95138			Drawing Number: <div style="font-size: 2em; font-weight: bold;">E1.12B</div> Dwg. of		
Date: APRIL 29, 2016	Checked: PRP	Drawn: S&B	<div style="text-align: right;">  Department of Veterans Affairs </div>		



CONSULTANTS:


smith&boucher
ENGINEERS

25501 west valley parkway, suite 200 olathe, ks 66061
phone 913.345.2127 fax 913.345.0617
project number 1525600



HOEFER WYSOCKI
Architecture

11460 TOMAHAWK CREEK PARKWAY, SUITE 400, LEAWOOD, KANSAS 66211

 Department of
Veterans Affairs

