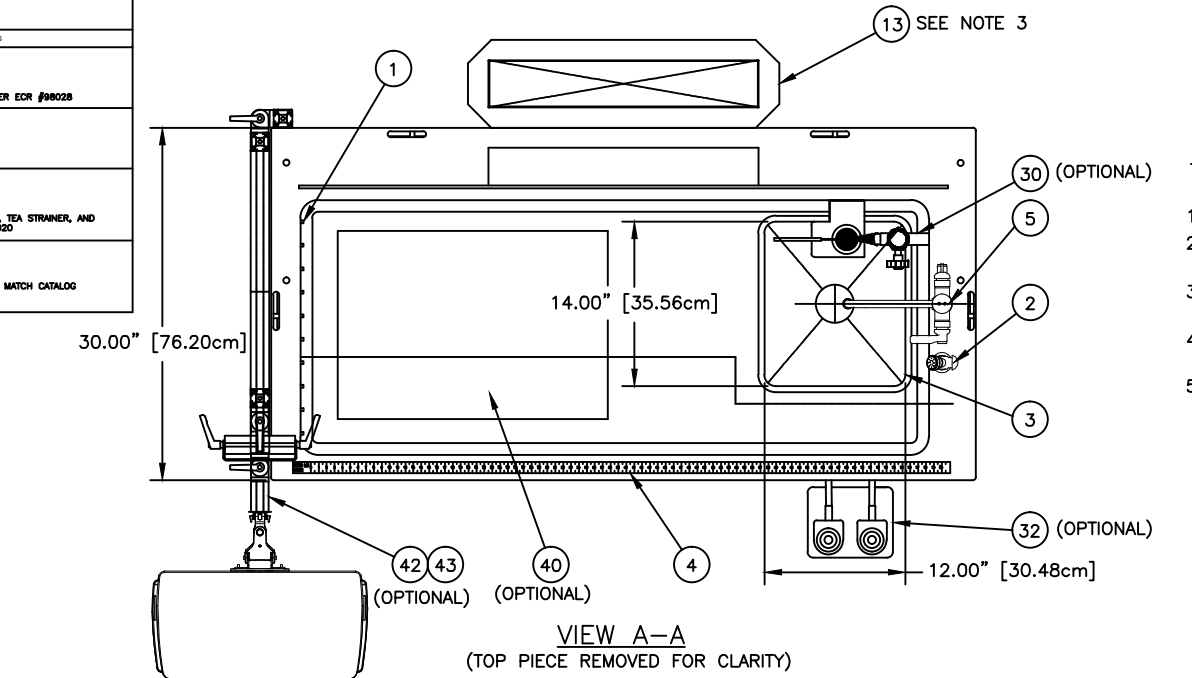


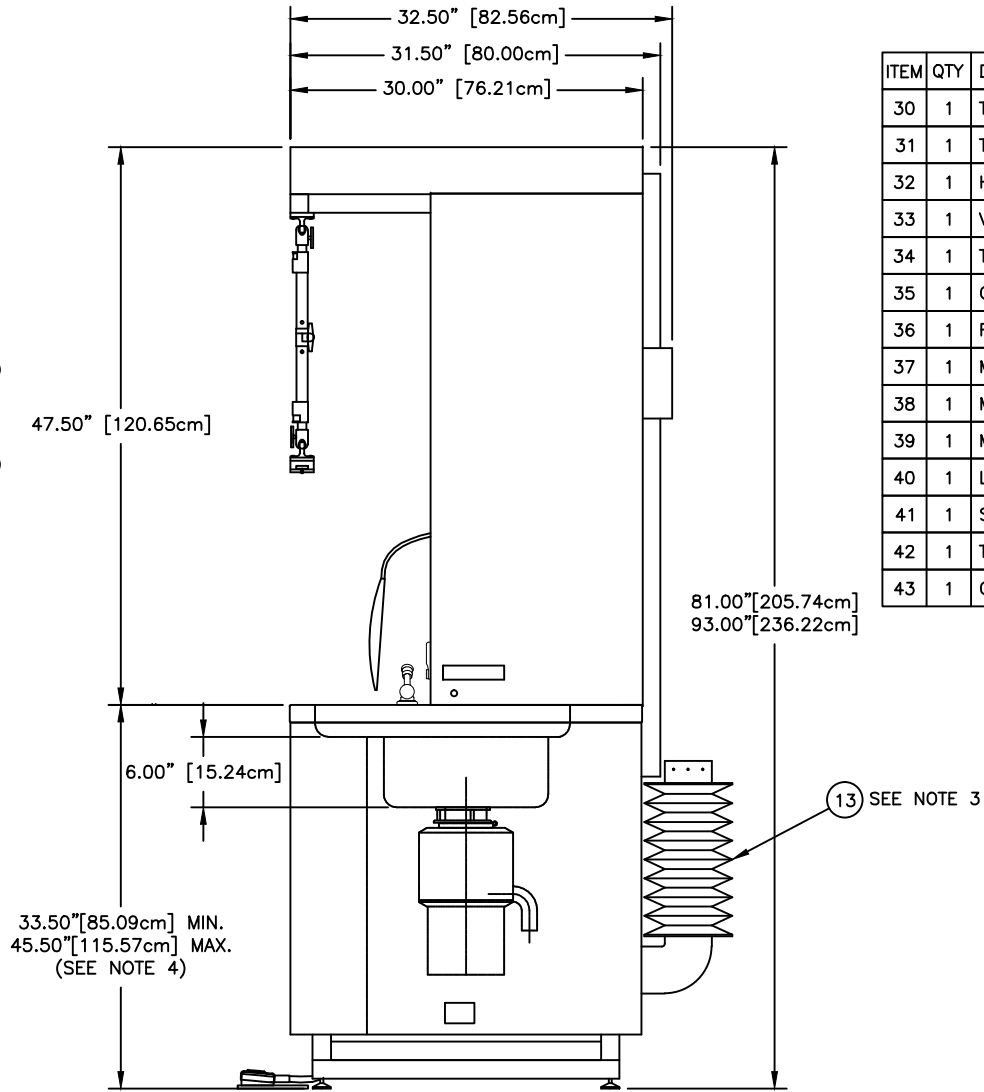
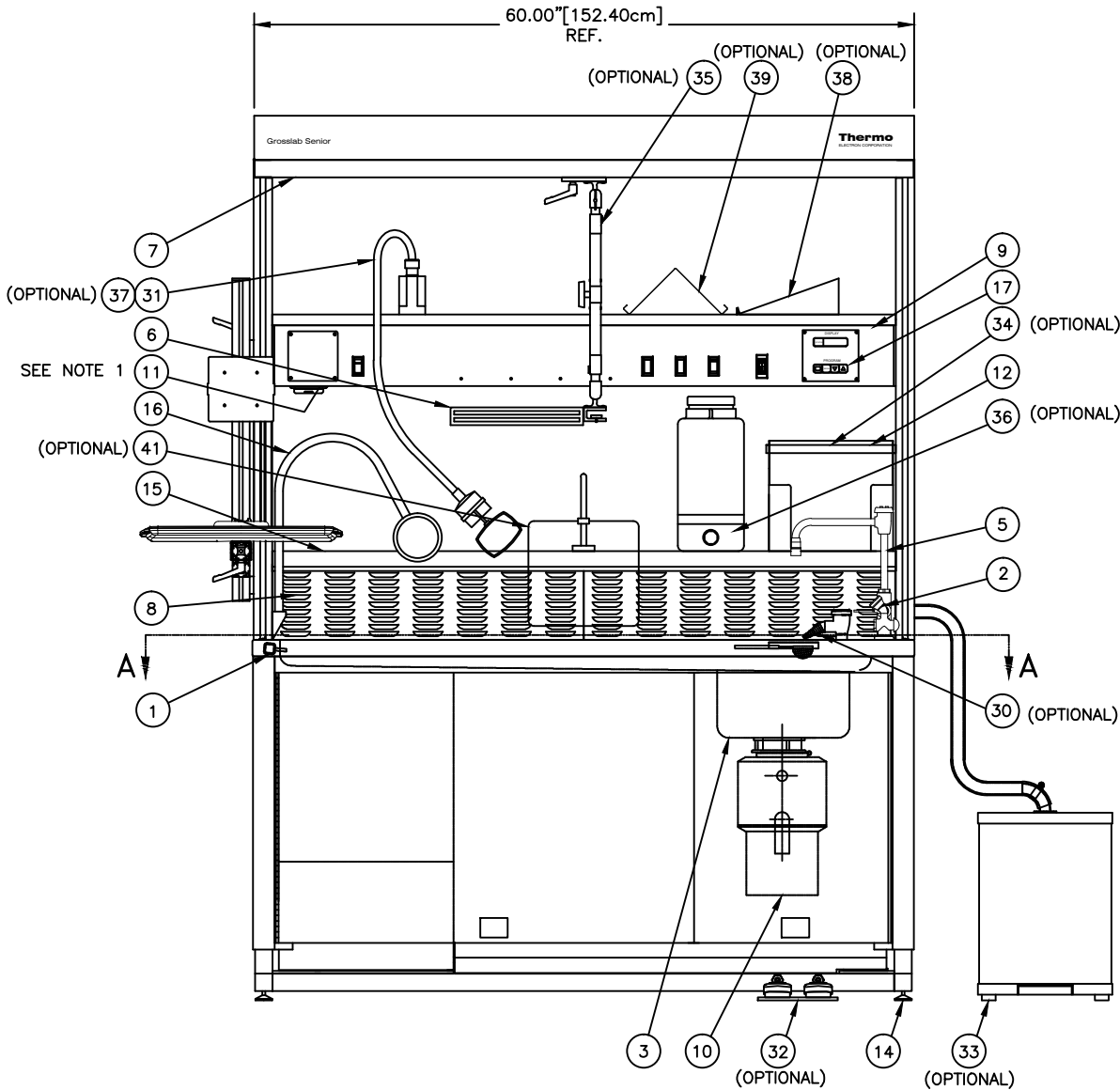
DRAWING NUMBER	
S9700	
REVISIONS	
A	BY: J. CONAN DATE: 4/9/98 APP: J.J.Z. DATE: 4/17/98 CREATED NEW SALES DRAWING, PER ECR #98028
B	BY: S. BERTONACH DATE: 4/17/02 APP: JOHN FISHER DATE: 09/28/01 UPDATED PER ECR #01029
C	BY: KO DATE: 8-4-09 APP: KCB DATE: 09-18-09 UPDATED INFORMATION ON RULER, TEA STRAINER, AND TOWEL RACK BAR, PER ECR #09020
D	BY: KO DATE: 10-21-15 APP: KCB DATE: 10-22-15 UPDATED OPTIONAL EQUIPMENT TO MATCH CATALOG PER ECR 15084



NOTES:

1. RECEPTACLE (ITEM 11) IS LOCATED UNDER CONTROL PANEL.
2. MAGNETIC INSTRUMENT BAR (ITEM 6) AND TOWEL DISPENSER (ITEM 12) ARE PROVIDED WITH DOUBLE-SIDED TAPE, TO BE LOCATED BY CUSTOMER.
3. FLEXIBLE EXHAUST DUCT (ITEM 13) IS PROVIDED FOR ELEVATING EXTERNAL AND REMOTE EXHAUST MODELS ONLY.
4. FIXED HEIGHT UNITS WORK SURFACE WILL BE SET TO 36" UNLESS OTHERWISE SPECIFIED AT THE TIME UNIT IS ORDERED
5. ITEMS 30-43 ARE OPTIONAL AND NOT INCLUDED ON STANDARD UNITS. ITEMS 30-33 ARE FACTORY ADDED OPTIONS. ALL OPTIONAL EQUIPMENT MUST BE PURCHASED SEPERATELY

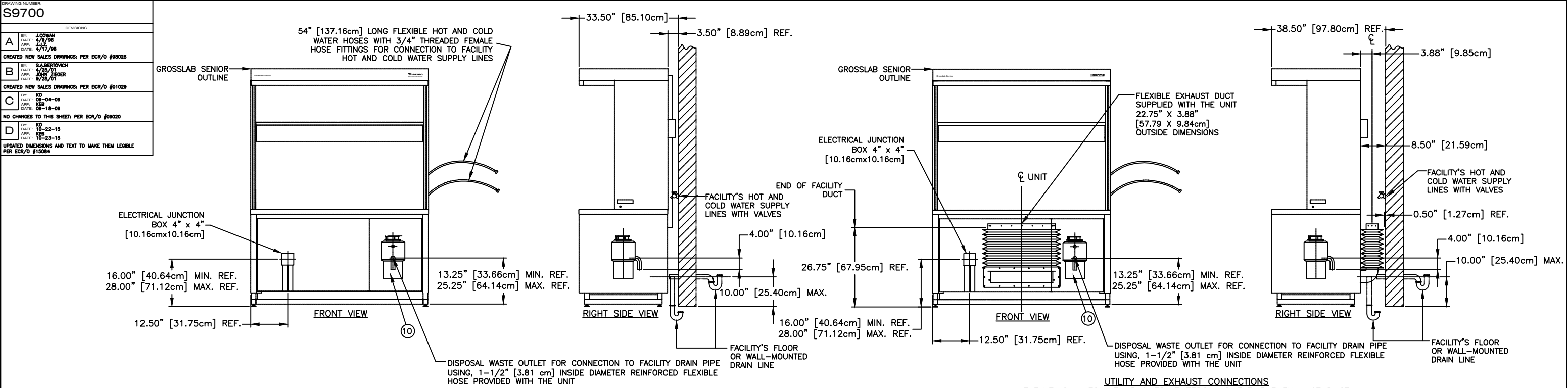
ITEM	QTY	DESCRIPTION
1	1	TABLE RINSE ASSEMBLY
2	1	HAND SPRAY
3	1	SINK, 14.00" [35.56cm] X 12.00" [30.48cm] X 6.00" [15.24cm] DP
4	1	CENTIMETER RULER
5	1	GOOSENECK FAUCET WITH BUILT-IN VACUUM BREAKER
6	1	MAGNETIC INSTRUMENT BAR, (SEE NOTE 2)
7	1	FLUORESCENT LIGHT FIXTURE (NOT SHOWN FOR CLARITY)
8	2	LOUVERED VENT PANEL
9	1	CONTROL DRAWER / UPPER SHELF ASSEMBLY
10	1	DISPOSAL 1/2 HP, (SEE SHEETS 2 & 3)
11	1	GFCI DUPLEX RECEPTACLE, 115V ONLY
12	1	CUSTOMER SPECIFIED RECEPTACLE, 230V ONLY
13	1	TOWEL DISPENSER (SEE NOTE 2)
14	1	FLEXIBLE EXHAUST DUCT (SEE NOTE 3 AND SHEET 2)
15	6	ADJUSTABLE LEVELING FEET
16	1	LOWER SHELF
17	1	FLEXIBLE ARM MAGNIFIER
18	1	CONTOLLER (ONLY ON PROXIMITY CONTROLLED UNITS)



ITEM	QTY	DESCRIPTION OF OPTIONAL EQUIPMENT (SEE NOTE 5)
30	1	TEA STRAINER FAUCET,MANUAL CONTROL,BRACKET,STRAINER (FACTORY INSTALLED)
31	1	TASK LAMP (FACTORY INSTALLED)
32	1	HOT /COLD FAUCET CONTROL FOOT PEDALS (FACTORY INSTALLED)
33	1	VENTILATED TRASH BIN (FACTORY INSTALLED) (LEFT OR RIGHT SIDE)
34	1	TOWEL RACK BAR
35	1	CAMERA BRACKET
36	1	FRESH FORMALIN DISPENSING CARBOY
37	1	MAGNIFIER FOR TASK LIGHT
38	1	MOVABLE DICTATION RECORDER RACK
39	1	MOVABLE REQUISITION RACK
40	1	LARGE PHOTOGRAPHIC BLUE DISSECTING BOARD
41	1	SPLASH SHIELD ON FLEXIBLE ARM
42	1	THIN MONITOR KEYBOARD BRACKET
43	1	COMPUTER MOUNT ADAPTER KIT (NOT SHOWN FOR CLARITY)

THIS PRINT IS THE PROPERTY OF THERMO FISHER. THIS INFORMATION IS UNCLASSIFIED. IF IT IS REPRODUCED IN ANY FORM OR BY ANY MEANS, WITHOUT WRITTEN PERMISSION FROM THE OWNER AND IS RETURNABLE UPON DEMAND, ANY REPRODUCTION OF THIS PRINT WILL BE SEVERELY PROSECUTED.		Thermo Fisher SCIENTIFIC 171 Industry Drive Pittsburgh, PA 15275-1034 Phone: 1.800.547.7429 Fax: 1.412.788.1138 www.thermo.com		Diagnostics Anatomical Pathology	
TOLERANCES UNLESS OTHERWISE SPECIFIED		TITLE:		GROSSLAB SENIOR, 9700 SERIES	
LINEAR VARIATIONS:		UP TO 24"		±0.002"	
		24" TO 48"		±0.003"	
		48" TO 72"		±0.005"	
		72" TO 120"		±0.010"	
ANGULAR VARIATIONS:		±1°		±1°	
INTERNAL USE ONLY		QUOTE NUMBER:	S.O. NUMBER:	DRAWN BY:	DATE:
				J. CONAN	4/9/98
		CHECKED BY:	DATE:	SCALE:	REF. NUMBER:
		R. J. Z.	4/17/98	1-1/2" = 1'-0"	9700 SERIES
		APPROVED BY:	DATE:	DRAWING NUMBER:	REVISION
		J. J. Z.	4/17/98	S9700	D
		SHEET 1 OF 3			

DRAWING NUMBER: S9700	
REVISIONS	
A	BY: J.COWAN DATE: 4/9/98 APP: J.COWAN DATE: 4/17/98 CREATED NEW SALES DRAWINGS: PER ECR/O #98028
B	BY: S.A.BERTONACH DATE: 4/25/01 APP: J.COWAN DATE: 9/28/01 CREATED NEW SALES DRAWINGS: PER ECR/O #01029
C	BY: KO DATE: 09-04-09 APP: J.COWAN DATE: 09-18-09 NO CHANGES TO THIS SHEET: PER ECR/O #09020
D	BY: KO DATE: 10-22-15 APP: J.COWAN DATE: 10-23-15 UPDATED DIMENSIONS AND TEXT TO MAKE THEM LEGIBLE PER ECR/O #15064



NOTES (APPLICABLE TO ELEVATING UNITS):

1. INSTALLATION OF THE GROSSLAB SENIOR CAN BE SIMPLIFIED IF THE PLUMBING AND ELECTRICAL UTILITIES ARE PROPERLY ROUGHED IN. SINCE ALL STANDARD MODELS OF THE GROSSLAB SENIOR ARE THE SAME SIZE, THE "OUTLINE" FOR EACH MODEL IS BASICALLY THE SAME. BECAUSE OF THE HEIGHT ADJUSTMENT FEATURE, PLUMBING AND ELECTRICAL CONNECTIONS ARE MADE WITH FLEXIBLE HOSES AND CONDUIT. 1/2" [1.27cm] DIAMETER INDUSTRIAL HOSES WITH 3/4" [1.91cm] THREADED FEMALE HOSE FITTINGS ARE SUPPLIED WITH THE UNIT FOR HOT AND COLD WATER CONNECTION. THESE SHOULD BE CONNECTED TO SHUTOFF VALVES HAVING MATCHING MALE THREADS. 1-1/2 [1.38cm] INSIDE DIAMETER REINFORCED HOSE IS PROVIDED FOR DRAIN CONNECTION. REFER TO LOCAL PLUMBING CODES FOR HARD PLUMBING REQUIREMENTS.

THE CENTER OF THE DISPOSAL WASTE OUTLET IS APPROXIMATELY 12.00in [30.48cm] FROM THE RIGHT EDGE OF THE UNIT (REFER TO THE VIEWS ON THIS DRAWING). RECOMMENDED TRAP LOCATIONS ARE IN THE WALL OR THE FLOOR SUCH AS TO PROVIDE THE PROPER HEIGHT OF THE CONNECTION PIPE (REFER TO THE VIEWS ON THIS DRAWING). THE CENTER OF THE FACILITY WASTE DRAIN PIPE FOR THE DISPOSAL SHOULD BE NO MORE THAN 10.00" [25.40cm] VERTICALLY OFF THE FLOOR, BUT AS LOW AS POSSIBLE IN ORDER TO INSURE PROPER DRAINAGE THROUGH THE FLEXIBLE HOSE. HIGHER ELEVATIONS ARE NOT RECOMMENDED. LATERAL POSITIONING OF THE FACILITY DRAIN CAN BE VARIED FROM THE HORIZONTAL CENTER OF THE WASTE OUTLET OF THE DISPOSAL, KEEPING IN MIND THAT THE FLEXIBLE DRAIN HOSE MUST BE FREE OF KINKS, COILS OR HIGH SPOTS. HORIZONTAL DISTANCE TO THE FACILITY DRAIN PIPE FROM THE WALL SHOULD BE KEPT TO A MINIMUM SO AS TO AVOID INTERFERENCE WITH BRACE MEMBERS ON THE UNIT.

110-120 VAC, 60 HZ, SINGLE PHASE UNITS REQUIRE TWO ELECTRICAL SUPPLIES. THE MAIN CIRCUIT WHICH SUPPLIES THE LIGHT, DISPOSAL AND OTHER CONTROLS REQUIRES A 20 AMP SUPPLY, PREFERABLY PROTECTED BY A 20 AMP GFCI (GROUND FAULT CIRCUIT INTERRUPTING) SINGLE POLE BREAKER. THE DUPLEX GFCI RECEPTACLE ON THE UNIT REQUIRES A 15 AMP SUPPLY PROTECTED BY A STANDARD 15 AMP SINGLE POLE BREAKER. THE WIRING TERMINATION'S FOR THESE CIRCUITS ARE LOCATED IN A 4" [10.16cm] x 4" [10.16cm] WEATHERPROOF JUNCTION BOX LOCATED ON THE UNIT (REFER TO THE VIEWS ON THIS DRAWING). IT IS RECOMMENDED THAT THE FACILITY PROVIDE A WALL-MOUNTED 4" [10.16cm] x 4" [10.16cm], WEATHERPROOF BOX FOR HARD WIRING TO THE BOX ON THE UNIT. WIRING BETWEEN THE FACILITY BOX AND THE BOX ON THE UNIT IS TO BE THROUGH FACILITY-SUPPLIED FLEXIBLE, NONMETALLIC LIQUID-TIGHT CONDUIT WITH ENOUGH SLACK TO ALLOW FOR INSTALLATION OF THE UNIT AND TO ALLOW FOR HEIGHT ADJUSTMENT. FOR MAXIMUM FLEXIBILITY, IT IS RECOMMENDED THAT TWO SEPARATE 3/8" [0.95cm] DIAMETER, 60" [152.40cm] LONG CONDUITS (ONE FOR EACH CIRCUIT) BE USED.

220-240 VAC, 50/60 HZ, SINGLE PHASE UNITS REQUIRE ONE ELECTRICAL SUPPLY AND DRAW 20 AMPS INCLUDING UP TO 7 AMPS BY TWO IEC 320 RECEPTACLES. THE MAIN CIRCUIT WHICH SUPPLIES THE LIGHT, DISPOSAL AND RECEPTACLE REQUIRES A 20 AMP SUPPLY, PREFERABLY PROTECTED BY A 20 AMP RCD (RESIDUAL CURRENT DETECTING) DOUBLE POLE BREAKER. THE WIRING TERMINATION FOR THIS CIRCUIT IS LOCATED IN A 4in [10.16cm] x 4in [10.16cm] WEATHERPROOF JUNCTION BOX LOCATED ON THE UNIT (REFER TO THE VIEWS ON THIS DRAWING). IT IS RECOMMENDED THAT THE FACILITY PROVIDE A WALL-MOUNTED 4" [10.16cm] x 4" [10.16cm], FACILITY SUPPLIED WEATHERPROOF JUNCTION BOX FOR HARD WIRING TO THE BOX ON THE UNIT. WIRING BETWEEN THE FACILITY BOX AND THE BOX ON THE UNIT IS TO BE THROUGH FLEXIBLE, NONMETALLIC LIQUID-TIGHT CONDUIT WITH ENOUGH SLACK TO ALLOW FOR INSTALLATION OF THE UNIT AND TO ALLOW FOR HEIGHT ADJUSTMENT. IT IS RECOMMENDED THAT ONE (1) 3/8" [0.953cm] DIAMETER, 60in [152.4cm] LONG CONDUIT BE USED.

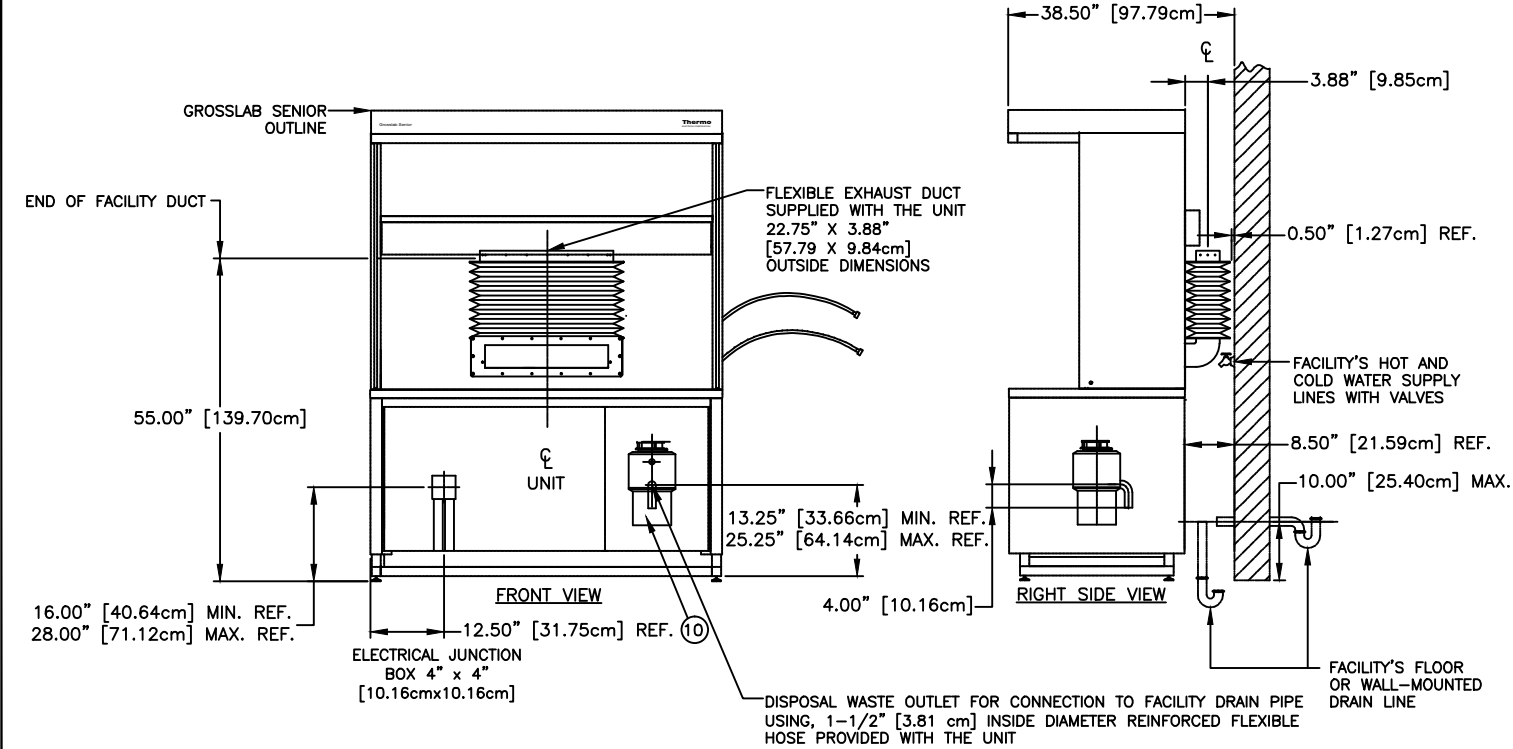
2. INSTALLATION OF GROSSLAB SENIOR MODELS THAT ELEVATE AND HAVE FLEXIBLE EXHAUST DUCTS CAN BE SIMPLIFIED IF THE FACILITY SUPPLIED DUCTWORK IS PROPERLY ROUGHED IN. PLEASE NOTE THAT THE FLEXIBLE EXHAUST DUCTS REQUIRE 8.50" [21.59cm] OF SPACE BEHIND THE UNIT, MAKING THE TOTAL DEPTH FROM THE WALL TO THE FRONT OF THE UNIT 38.50" [97.79cm]. THE FLEXIBLE EXHAUST DUCT IS SUPPLIED WITH THE UNIT AND MUST BE FIELD INSTALLED.

3. UNITS WHICH HAVE INTERNAL BLOWERS AND EXTERNAL EXHAUSTS (MODELS 97001, 97007, 9700122, 9700722) THAT ARE DESIGNED TO BE EXHAUSTED SHORT DISTANCES (20 FT. MAX.) SHOULD NOT BE CONNECTED IN SERIES WITH AN EXISTING FACILITY EXHAUST BLOWER AND DUCTWORK WITHOUT CONSULTING THERMO'S ENGINEERING DEPARTMENT.

4. FOR FACILITY REMOTE BLOWER SELECTION, WITH UNITS WHICH CONNECT TO FACILITY SUPPLIED DUCTWORK AND BLOWER SYSTEMS (MODELS 97002, 97008, 970022, 9700122), RECOMMENDED EXHAUST AIR VOLUME IS APPROXIMATELY 500 CFM [0.236 CU.M/S]. PRESSURE LOSSES THROUGH THE UNIT ARE APPROXIMATELY 0.41 INCHES W.G. [1.02MB] AT 500 CFM. THE FACILITY MUST ADD PRESSURE LOSSES THROUGH THE FACILITY DUCT SYSTEM, WHICH IS DOWNSTREAM OF THE UNIT.

AN AIRFLOW VOLUME CONTROL DAMPER IS RECOMMENDED IN THE FACILITY EXHAUST DUCT SYSTEM.

5. VALVES ARE PROVIDED IN THE BACK OF EACH UNIT LOCATED IN LOWER RIGHT SIDE FOR CONTROL OF THE TEA STRAINER FAUCET AND TABLE RINSE WATER PRESSURE. ALTHOUGH THESE ARE ADJUSTED IN THE FACTORY, USERS MAY WANT TO READJUST THEM AS DESIRED.



THIS PRINT IS THE PROPERTY OF THERMO FISHER. THE INFORMATION CONTAINED HEREIN IS CONFIDENTIAL. IT IS UNREPRODUCIBLE IN ANY FORM OR BY ANY MEANS WITHOUT WRITTEN PERMISSION FROM THE OWNER AND IS RETURNABLE UPON DEMAND. ANY REPRODUCTION OF THIS PRINT, IN WHOLE OR IN PART, WILL BE SEVERELY PROSECUTED.		Thermo Fisher SCIENTIFIC 171 Industry Drive Pittsburgh, PA 15275-1034 Phone: 1.800.547.7429 Fax: 1.412.788.1138 www.thermo.com	
TOLERANCES UNLESS OTHERWISE SPECIFIED		TITLE: GROSSLAB SENIOR, 9700 SERIES	
LINEAR VARIATIONS:		CUSTOMER:	
UP TO 24"		DATE: 4/9/98	
24" TO 48"		SCALE: 3/4" = 1'-0"	
48" TO 72"		DATE: 4/17/98	
72" TO 120"		DRAWING NUMBER: S9700	
ANGULAR VARIATIONS:		SHEET 2 OF 3	
±1°		REVISION	
INTERNAL USE ONLY		DRAWN BY: J.COWAN	
AS PART OF OUR POLICY OF CONTINUING DEVELOPMENT, THERMO FISHER RESERVES THE RIGHT TO ALTER SPECIFICATIONS WITHOUT PRIOR NOTICE.		CHECKED BY: R.D. JORDEN	
		DATE: 4/17/98	
		APPROVED BY: J.J.Z.	
		DATE: 4/17/98	
		PART NUMBER: 9700 SERIES	
		REVISION	
		D	

