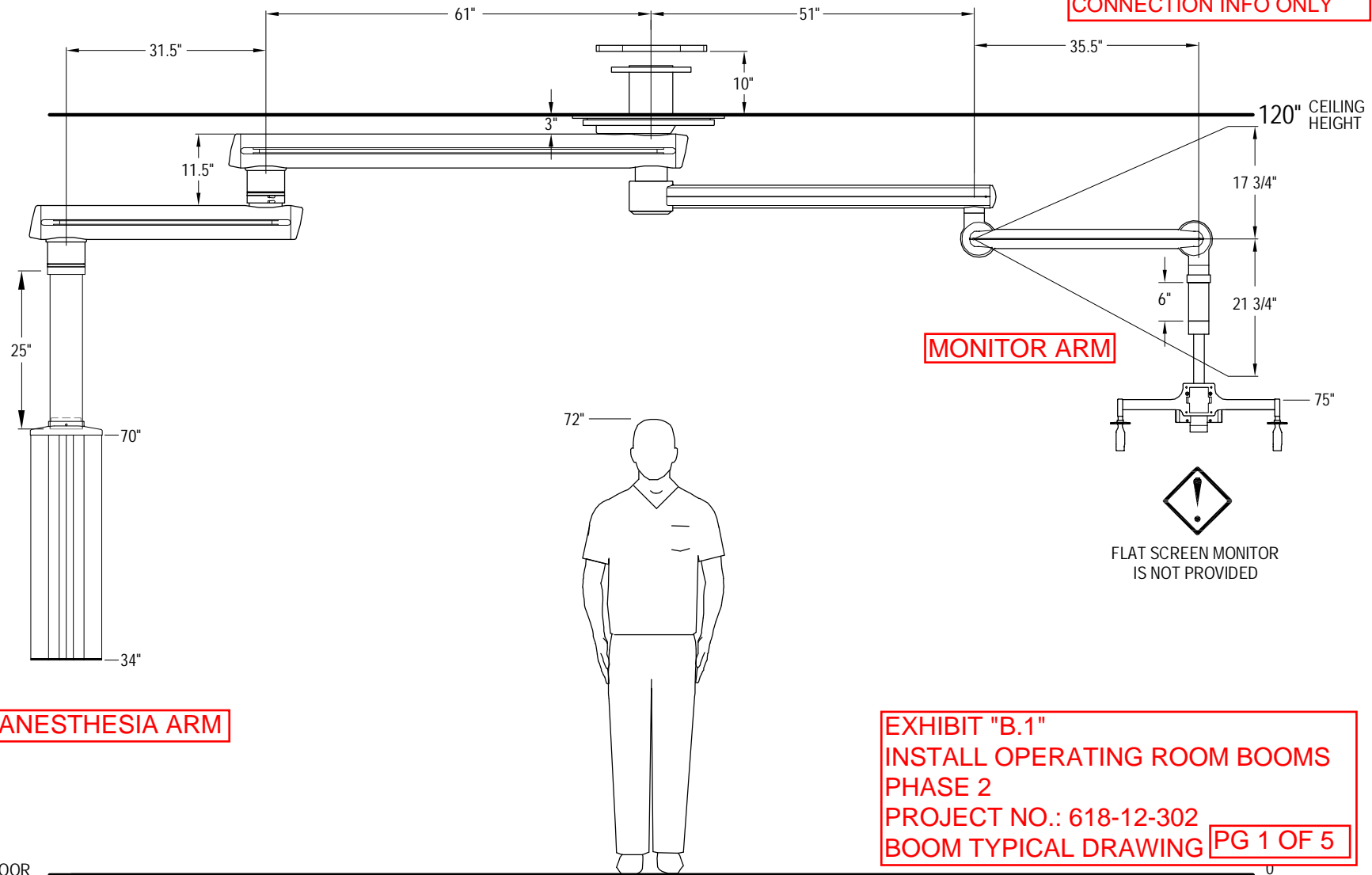




ATTENTION STRUCTURAL ENGINEER:  
REFER TO THE ERGON PRE-INSTALL GUIDE PAGE 5  
FOR STRUCTURAL REQUIREMENTS



NOTE: CONFIGURATION  
NOT SPECIFIC TO THE  
MINNEAPOLIS VAMC  
PROJECT. SHOWN FOR  
TYPICAL UTILITY  
CONNECTION INFO ONLY



MONITOR ARM

ANESTHESIA ARM

FLAT SCREEN MONITOR  
IS NOT PROVIDED

EXHIBIT "B.1"  
INSTALL OPERATING ROOM BOOMS  
PHASE 2  
PROJECT NO.: 618-12-302  
BOOM TYPICAL DRAWING PG 1 OF 5

FLOOR

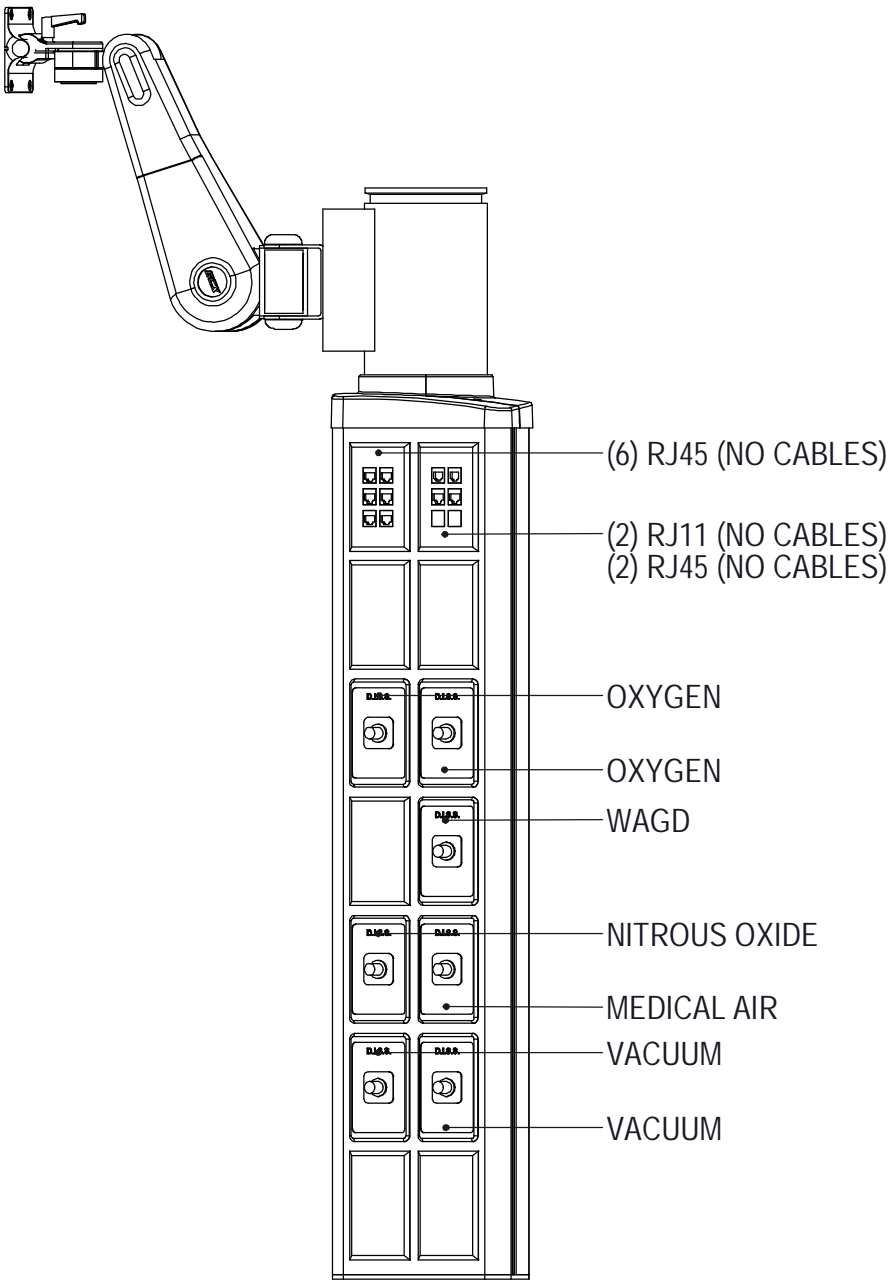
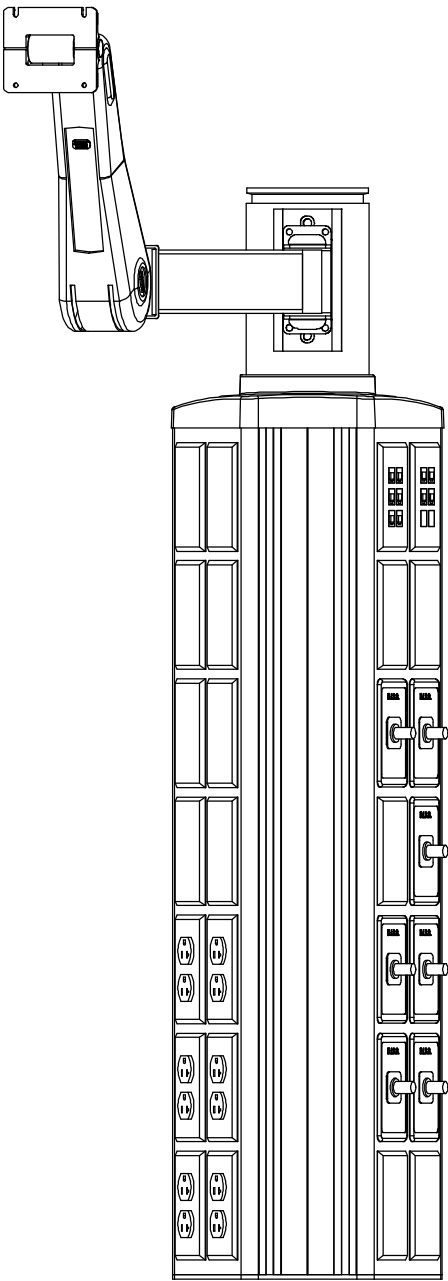
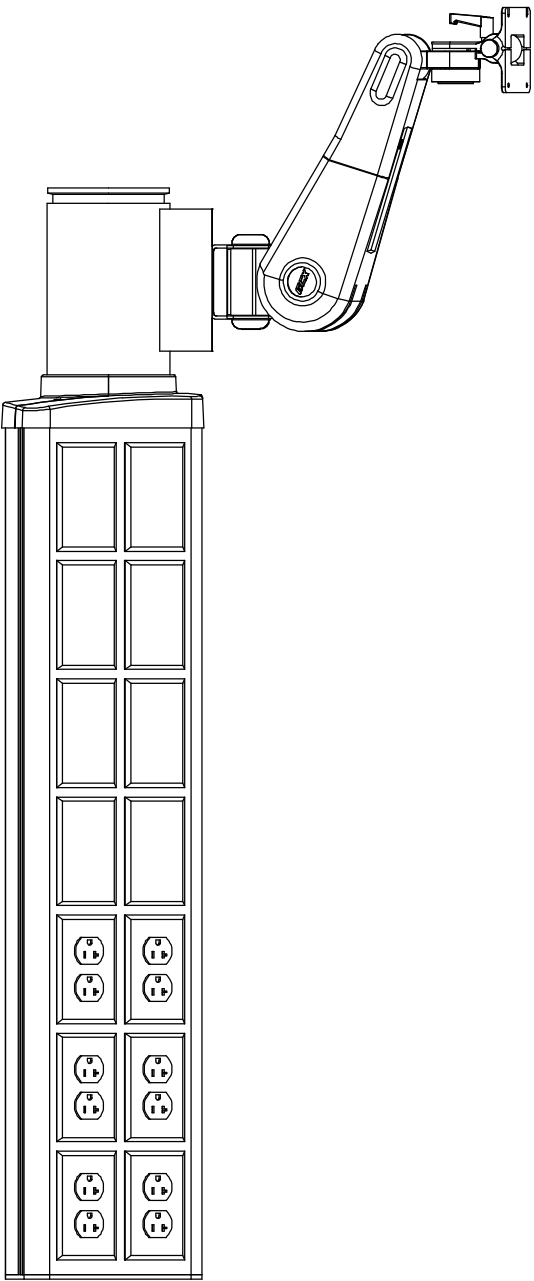
INITIAL: \_\_\_\_\_  
DATE: \_\_\_\_\_

FIXTURE WEIGHT: 789 Lbs    MOMENT LOAD: 4457 Ft-Lbs

ACCESSORY LIST

(1) HEIGHT ADJUSTABLE MONITOR MOUNT FOR VST

ANESTHESIA ARM



INITIAL: \_\_\_\_\_  
DATE: \_\_\_\_\_

CARRIER  
DIMENSIONS: 37"H x 11.5"W x 8"D

GAS OUTLETS: \_\_\_\_\_ DISS \_\_\_\_\_

ELECTRICAL: (6) 125V, 20A DUPLEX - RED

EXHIBIT "B.1"  
INSTALL OPERATING ROOM BOOMS  
PHASE 2  
PROJECT NO.: 618-12-302  
BOOM TYPICAL DRAWING PG 2 OF 5



ATTENTION MEDICAL GAS / PIPING ENGINEER:  
REFER TO THE ERGON PRE-INSTALL GUIDE PAGE 7  
FOR MEDICAL GAS REQUIREMENTS

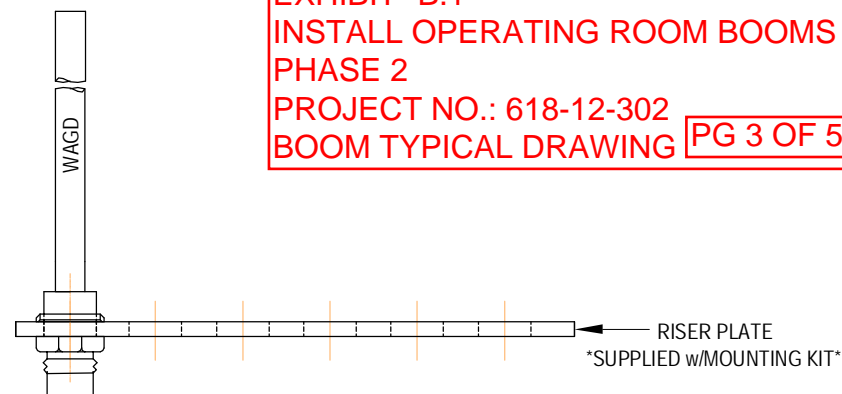
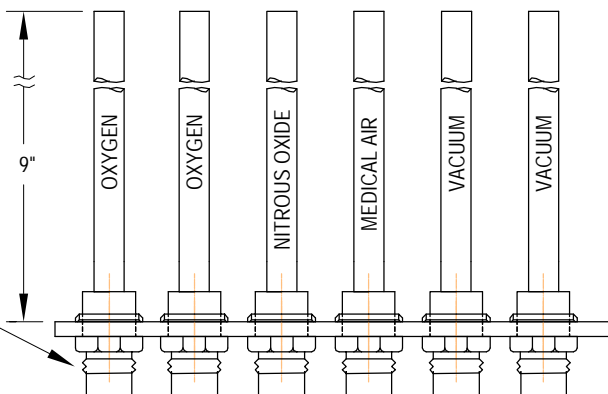


ANESTHESIA ARM

EXHIBIT "B.1"  
INSTALL OPERATING ROOM BOOMS  
PHASE 2  
PROJECT NO.: 618-12-302  
BOOM TYPICAL DRAWING PG 3 OF 5

- TYPE K COPPER TUBING
- 1/2" O.D. UNLESS OTHERWISE STATED

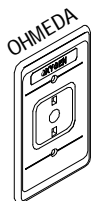
DISS CONNECTOR  
(w/ PRIMARY CHECK.  
PASSIVE EVAC, VACUUM &  
WAGD DO NOT HAVE  
PRIMARY CHECK.)  
\*SUPPLIED w/MOUNTING KIT\*



GAS CONNECTOR ASSEMBLY  
(w/ SECONDARY CHECK)  
\*SUPPLIED w/FIXTURE\*



X



VERIFY AND INITIAL  
GAS FACEPLATE  
STYLE REQUESTED

Test Gas	CGA Color Standard	Canada Color Standard	Abbreviated Name	Standard Pressure	Maximum Pressure	Allowable Pressure Drop	Minimum Flow Rates	
N <sub>2</sub> NF	Medical Air (Yellow)	Medical Air (Black)	MedAir	50 - 55 psig	55 psig	5 psig	3.5 SCFM per outlet (100NL/min)	see note #1
N <sub>2</sub> NF	Carbon Dioxide (Gray)	Carbon Dioxide (Gray)	CO <sub>2</sub>	50 - 55 psig	55 psig	5 psig	3.5 SCFM per outlet (100NL/min)	
N <sub>2</sub> NF	Heliox (Brown)	Heliox (Brown)	Heliox	50 - 55 psig	55 psig	5 psig	3.5 SCFM per outlet (100NL/min)	
N <sub>2</sub> NF	Nitrogen (Black)	Nitrogen (Black)	N <sub>2</sub> or HPN <sub>2</sub>	160 - 185 psig	200 psig	5 psig	5 SCFM per outlet (140NL/min) free air per outlet	see note #4
N <sub>2</sub> NF	Nitrous Oxide (Blue)	Nitrous Oxide (Blue)	N <sub>2</sub> O	50 - 55 psig	55 psig	5 psig	3.5 SCFM per outlet (100NL/min)	
N <sub>2</sub> NF	Oxygen (Green)	Oxygen (White)	O <sub>2</sub>	50 - 55 psig	55 psig	5 psig	3.5 SCFM per outlet (100NL/min)	see note #1
	Vacuum (White)	Vacuum (Yellow)	MedVac	12in/Hg (300mm)	N/A		3 SCFM per outlet (85NL/min)	see note #2
	Waste Anesthetic Gas Disposal (Purple)	Waste Anesthetic Gas Disposal (Purple)	WAGD	Varies with system type			At a minimum, each inlet must be able to draw a continuous 50 lpm (1.8 SCFM) through the interface	see note #3

Note #1 - Any room (Critical Care Area) designed for a permanently located respiratory ventilator or anesthesia machine shall have an outlet capable of a transient flow rate of: 170 LPM (6 SCFM) for 3 seconds at the station outlet.

Note #2 - For testing and certification purposes, individual station inlets shall be capable of a flow rate of: 3 SCFM, while maintaining a system pressure of not less than 12" (300mm) at the nearest adjacent vacuum inlet. Facility supply must be 115 LPM MINIMUM. (Vacuum D.I.S.S. connectors omit primary check valves for optimal flow). 12in/HG.

Note #3 - WAGD (Waste Anesthetic Gas Disposal) systems employing a design where the WAGD lines are "tied in" to MedVac lines must produce the same flow rates as the MedVac inlets.

Note #4 - Nitrogen system requires nitrogen supplied directly from facility supply line rated at 185psi MIN to 200psi MAX.

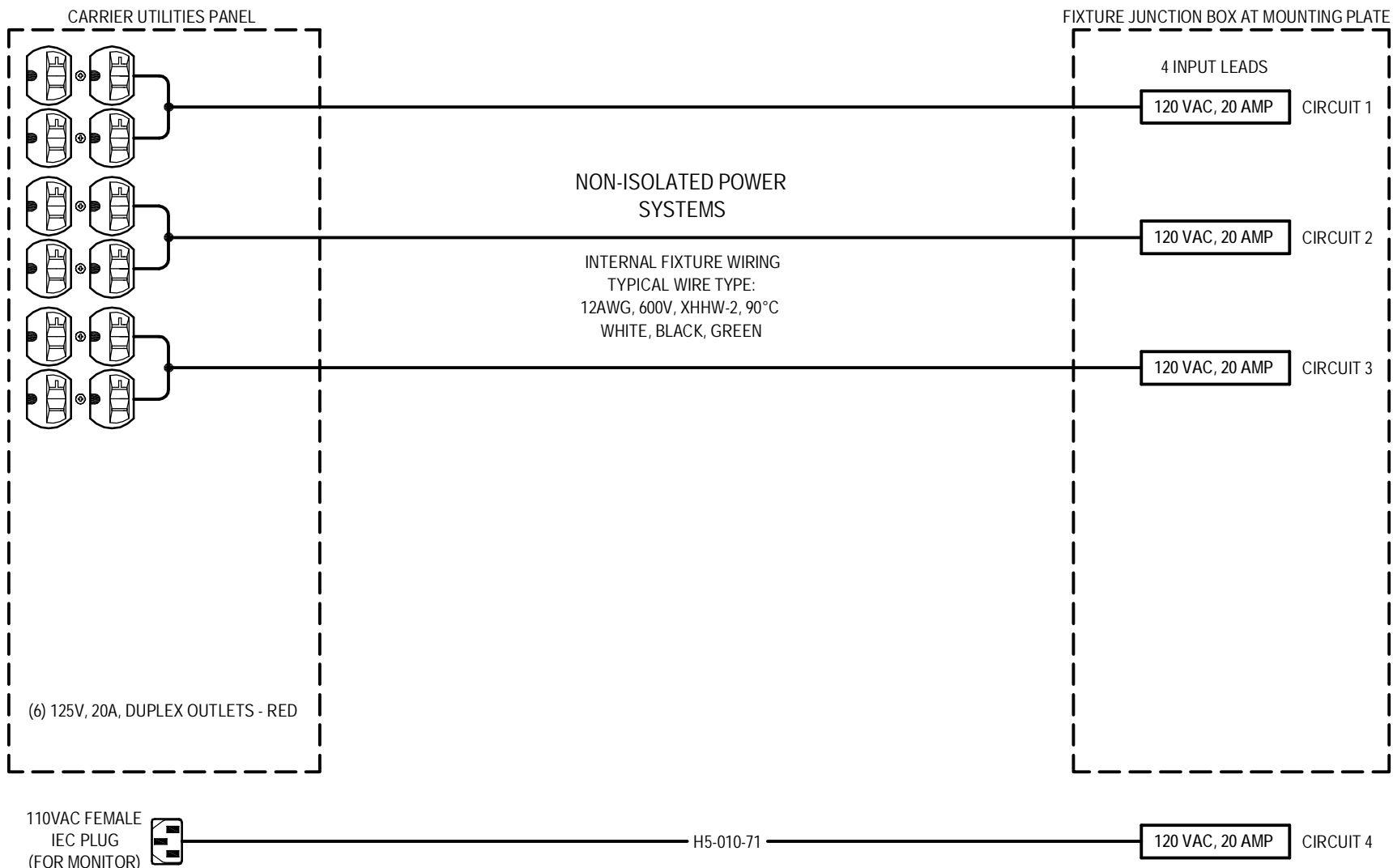
Additional references: Health Care Facilities Handbook 2002, Section 5.1.11, page 211 and section 5.1.12.13.10.1 thru 5.1.12.3.10.5, page 224.  
NFPA 99, 2002 guideline figure A.5.1.6.

INITIAL: \_\_\_\_\_

DATE: \_\_\_\_\_



ATTENTION ELECTRICAL ENGINEER: SPECIFIC CONDUCTOR COLORS AND/OR WIRING FOR ISOLATED APPLICATIONS ARE AVAILABLE UPON REQUEST. REFER TO THE ERGON PRE-INSTALL GUIDE PAGE 7 FOR STRUCTURAL REQUIREMENTS.



INITIAL: \_\_\_\_\_

DATE: \_\_\_\_\_

ANESTHESIA ARM

EXHIBIT "B.1"

INSTALL OPERATING ROOM BOOMS  
PHASE 2

PROJECT NO.: 618-12-302

BOOM TYPICAL DRAWING PG 4 OF 5



ATTENTION VIDEO / COMMUNICATIONS / DATA ENGINEER:  
REFER TO THE ERGON PRE-INSTALL GUIDE PAGE 7  
FOR LOW VOLTAGE ELECTRICAL REQUIREMENTS  
(COMMUNICATIONS/DATA/VIDEO)



MOUNTING HUB  
(male connectors)

UTILITIES CARRIER  
(female connectors)

ALL CABLING TO BE  
PROVIDED BY OTHERS



RJ45



RJ45



RJ45



RJ45



RJ45



RJ45



RJ45



RJ45



RJ11



RJ11

ANESTHESIA ARM

EXHIBIT "B.1"  
INSTALL OPERATING ROOM BOOMS  
PHASE 2  
PROJECT NO.: 618-12-302  
BOOM TYPICAL DRAWING PG 5 OF 5

INITIAL: \_\_\_\_\_

DATE: \_\_\_\_\_