



ATTENTION STRUCTURAL ENGINEER:
REFER TO THE ERGON PRE-INSTALL GUIDE PAGE 5
FOR STRUCTURAL REQUIREMENTS



NOTE: CONFIGURATION
NOT SPECIFIC TO THE
MINNEAPOLIS VAMC
PROJECT. SHOWN FOR
TYPICAL UTILITY
CONNECTION INFO ONLY

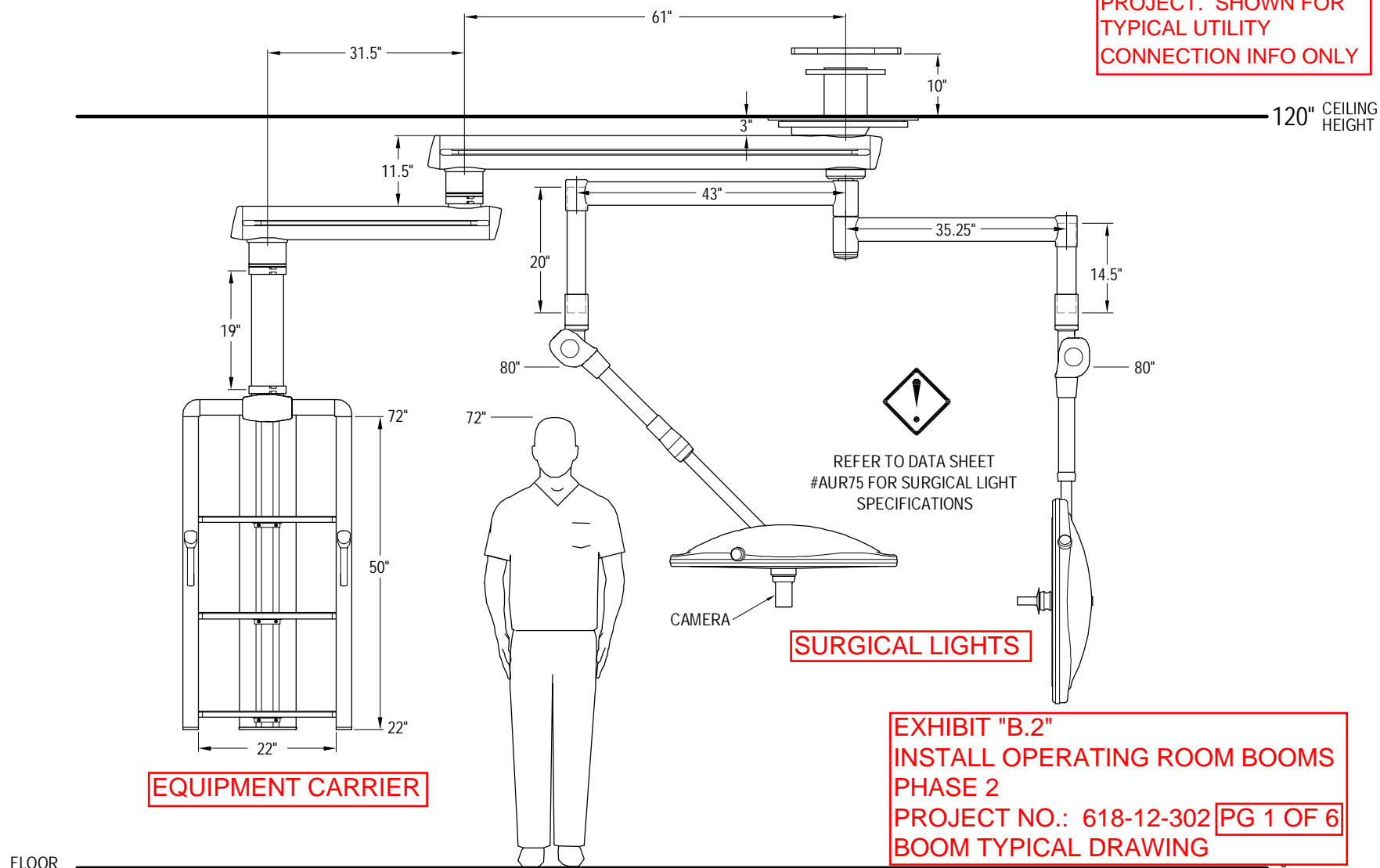


EXHIBIT "B.2"
INSTALL OPERATING ROOM BOOMS
PHASE 2
PROJECT NO.: 618-12-302 PG 1 OF 6
BOOM TYPICAL DRAWING

INITIAL: _____

DATE: _____

FIXTURE WEIGHT: 723 Lbs MOMENT LOAD: 4031 Ft-Lbs

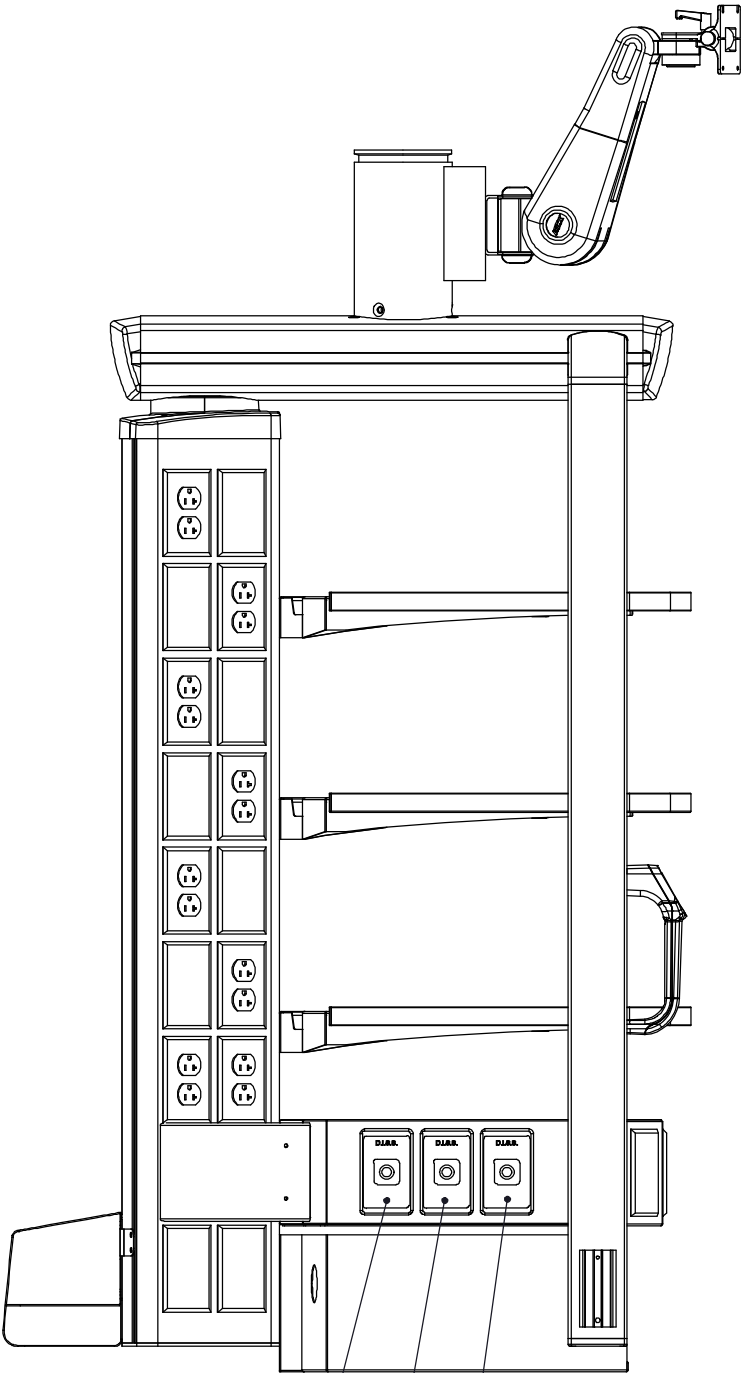
ACCESSORY LIST

- (1) BASE UTILITY BOX 22"
- (1) HEIGHT ADJUSTABLE MONITOR MOUNT FOR VST
- (1) FOOT PEDAL HOLDER
- (1) CO2 BOTTLE HOLDER
- (1) BACK COVERS (NOT SHOWN)
- (2) BOLT-ON VACUUM SLIDE
- (3) PMSH SHELF 22"

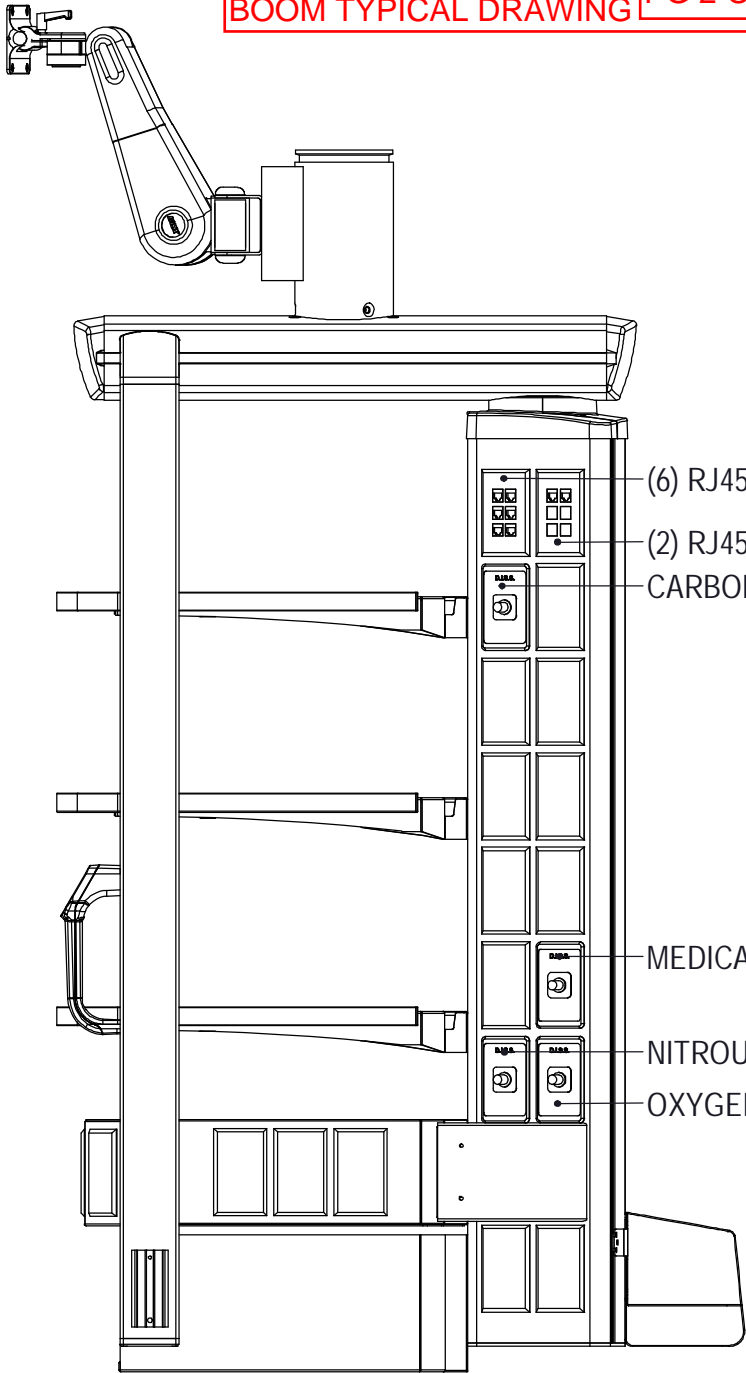
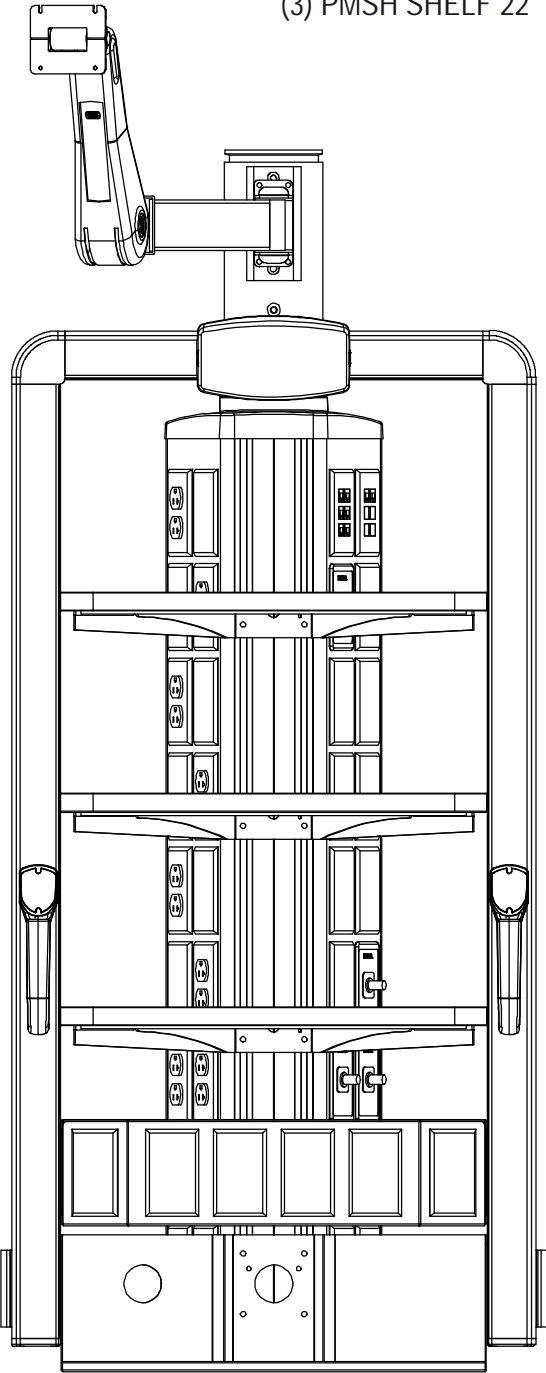
EQUIPMENT CARRIER

EXHIBIT "B.2"
INSTALL OPERATING ROOM BOOMS
PHASE 2
PROJECT NO.: 618-12-302
BOOM TYPICAL DRAWING

PG 2 OF 6



VACUUM
MEDICAL AIR
VACUUM



(6) RJ45(NO CABLE)
(2) RJ45(NO CABLE)
CARBON DIOXIDE

MEDICAL AIR
NITROUS OXIDE
OXYGEN

INITIAL: _____
DATE: _____

CARRIER
DIMENSIONS: 54"H x 27.5"W x 30"D

GAS OUTLETS: _____ DISS

ELECTRICAL: _____ (8) 125V, 20A DUPLEX - RED



ATTENTION MEDICAL GAS / PIPING ENGINEER:
REFER TO THE ERGON PRE-INSTALL GUIDE PAGE 7
FOR MEDICAL GAS REQUIREMENTS

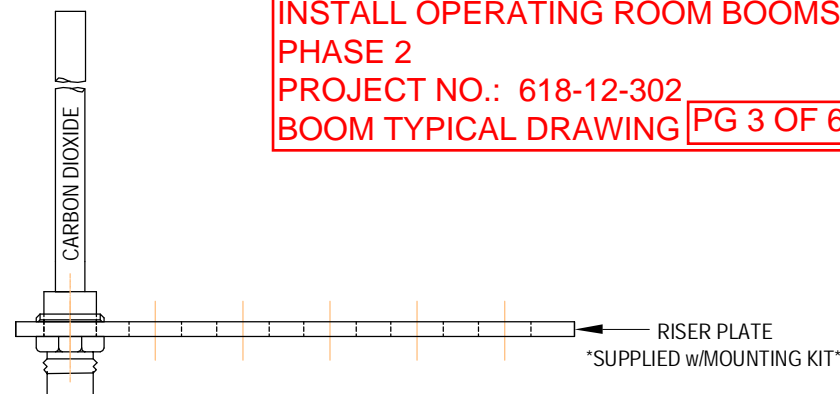
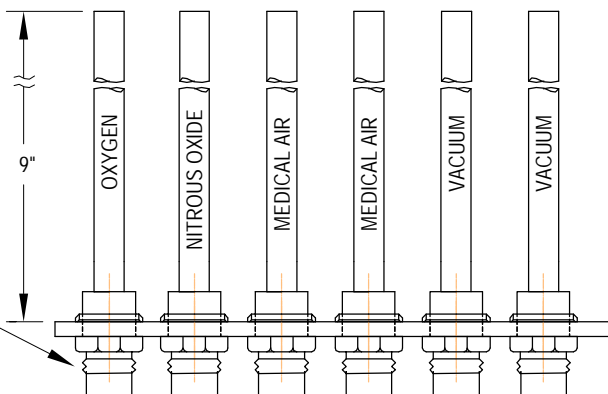


EQUIPMENT CARRIER

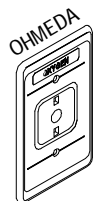
EXHIBIT "B.2"
INSTALL OPERATING ROOM BOOMS
PHASE 2
PROJECT NO.: 618-12-302
BOOM TYPICAL DRAWING **PG 3 OF 6**

- TYPE K COPPER TUBING
- 1/2" O.D. UNLESS OTHERWISE STATED

DISS CONNECTOR
(w/ PRIMARY CHECK.
PASSIVE EVAC, VACUUM &
WAGD DO NOT HAVE
PRIMARY CHECK.)
SUPPLIED w/MOUNTING KIT



GAS CONNECTOR ASSEMBLY
(w/ SECONDARY CHECK)
SUPPLIED w/FIXTURE



**VERIFY AND INITIAL
GAS FACEPLATE
STYLE REQUESTED**

Test Gas	CGA Color Standard	Canada Color Standard	Abbreviated Name	Standard Pressure	Maximum Pressure	Allowable Pressure Drop	Minimum Flow Rates	
N ₂ NF	Medical Air (Yellow)	Medical Air (Black)	MedAir	50 - 55 psig	55 psig	5 psig	3.5 SCFM per outlet (100NL/min)	see note #1
N ₂ NF	Carbon Dioxide (Gray)	Carbon Dioxide (Gray)	CO ₂	50 - 55 psig	55 psig	5 psig	3.5 SCFM per outlet (100NL/min)	
N ₂ NF	Heliox (Brown)	Heliox (Brown)	Heliox	50 - 55 psig	55 psig	5 psig	3.5 SCFM per outlet (100NL/min)	
N ₂ NF	Nitrogen (Black)	Nitrogen (Black)	N ₂ or HPN ₂	160 - 185 psig	200 psig	5 psig	5 SCFM per outlet (140NL/min) free air per outlet	see note #4
N ₂ NF	Nitrous Oxide (Blue)	Nitrous Oxide (Blue)	N ₂ O	50 - 55 psig	55 psig	5 psig	3.5 SCFM per outlet (100NL/min)	
N ₂ NF	Oxygen (Green)	Oxygen (White)	O ₂	50 - 55 psig	55 psig	5 psig	3.5 SCFM per outlet (100NL/min)	see note #1
	Vacuum (White)	Vacuum (Yellow)	MedVac	12in/Hg (300mm)	N/A		3 SCFM per outlet (85NL/min)	see note #2
	Waste Anesthetic Gas Disposal (Purple)	Waste Anesthetic Gas Disposal (Purple)	WAGD	Varies with system type			At a minimum, each inlet must be able to draw a continuous 50 lpm (1.8 SCFM) through the interface	see note #3

Note #1 - Any room (Critical Care Area) designed for a permanently located respiratory ventilator or anesthesia machine shall have an outlet capable of a transient flow rate of: 170 LPM (6 SCFM) for 3 seconds at the station outlet.

Note #2 - For testing and certification purposes, individual station inlets shall be capable of a flow rate of: 3 SCFM, while maintaining a system pressure of not less than 12" (300mm) at the nearest adjacent vacuum inlet. Facility supply must be 115 LPM MINIMUM. (Vacuum D.I.S.S. connectors omit primary check valves for optimal flow). 12in/HG.

Note #3 - WAGD (Waste Anesthetic Gas Disposal) systems employing a design where the WAGD lines are "tied in" to MedVac lines must produce the same flow rates as the MedVac inlets.

Note #4 - Nitrogen system requires nitrogen supplied directly from facility supply line rated at 185psi MIN to 200psi MAX.

Additional references: Health Care Facilities Handbook 2002, Section 5.1.11, page 211 and section 5.1.12.13.10.1 thru 5.1.12.3.10.5, page 224.
NFPA 99, 2002 guideline figure A.5.1.6.

INITIAL: _____

DATE: _____



ATTENTION ELECTRICAL ENGINEER: SPECIFIC CONDUCTOR COLORS AND/OR WIRING FOR ISOLATED APPLICATIONS ARE AVAILABLE UPON REQUEST. REFER TO THE ERGON PRE-INSTALL GUIDE PAGE 7 FOR STRUCTURAL REQUIREMENTS.

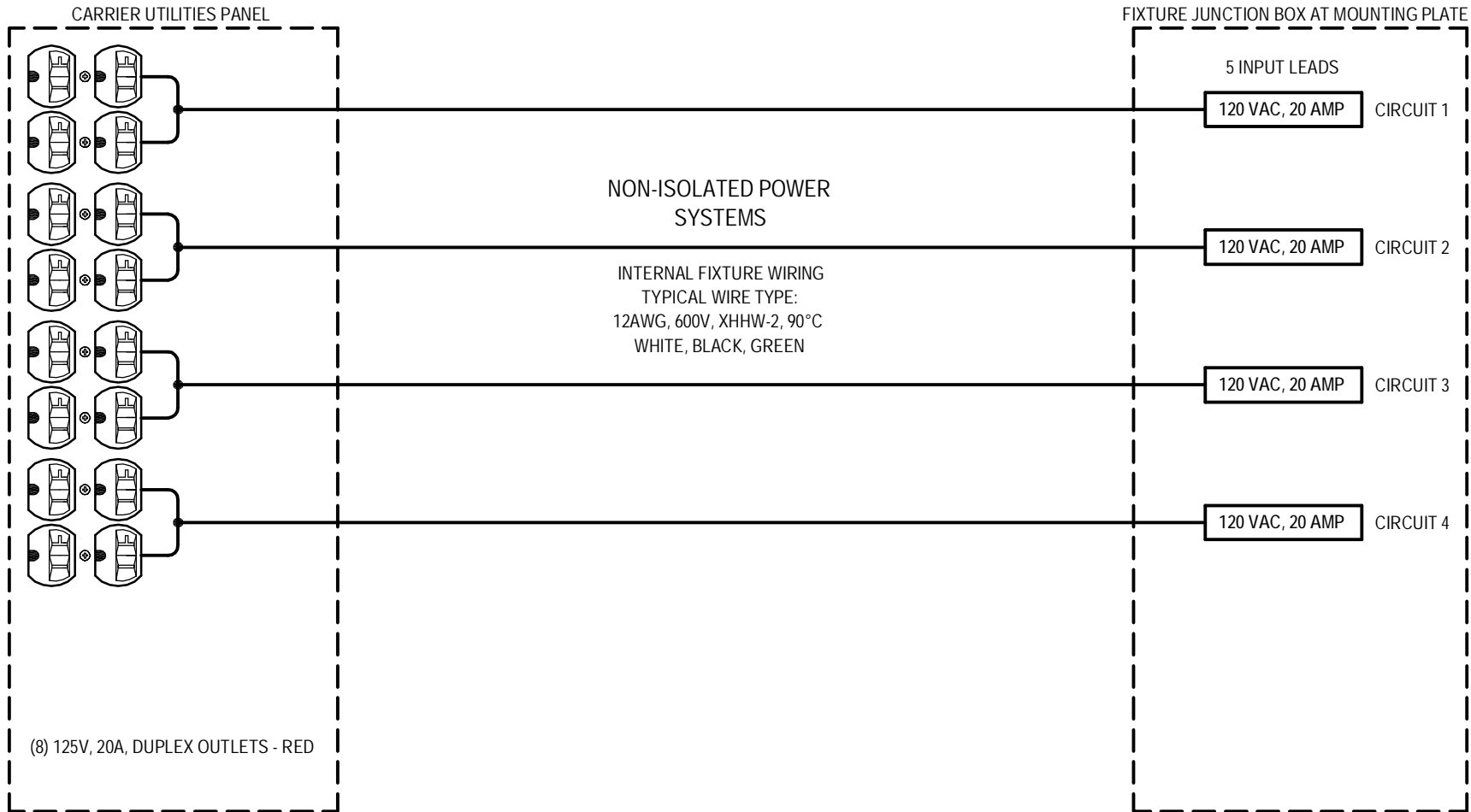


EXHIBIT "B.2"
INSTALL OPERATING ROOM BOOMS
PHASE 2
PROJECT NO.: 618-12-302
BOOM TYPICAL DRAWING

PG 4 OF 6

LIGHT CIRCUIT
TO WALL CONTROL
SEE PAGE 6

120 VAC, 15 AMP
AURORA LIGHT

CIRCUIT 5

EQUIPMENT CARRIER

INITIAL: _____

DATE: _____



ATTENTION VIDEO / COMMUNICATIONS / DATA ENGINEER:
REFER TO THE ERGON PRE-INSTALL GUIDE PAGE 7
FOR MEDICAL GAS REQUIREMENTS



MOUNTING HUB
(male connectors)

UTILITIES CARRIER
(female connectors)

ALL CABLING TO BE
PROVIDED BY OTHERS



RJ45



RJ45



RJ45



RJ45



RJ45



RJ45



RJ45



RJ45

EQUIPMENT CARRIER

EXHIBIT "B.2"
INSTALL OPERATING ROOM BOOMS
PHASE 2

PROJECT NO.: 618-11-114

BOOM TYPICAL DRAWING PG 5 OF 6

INITIAL: _____

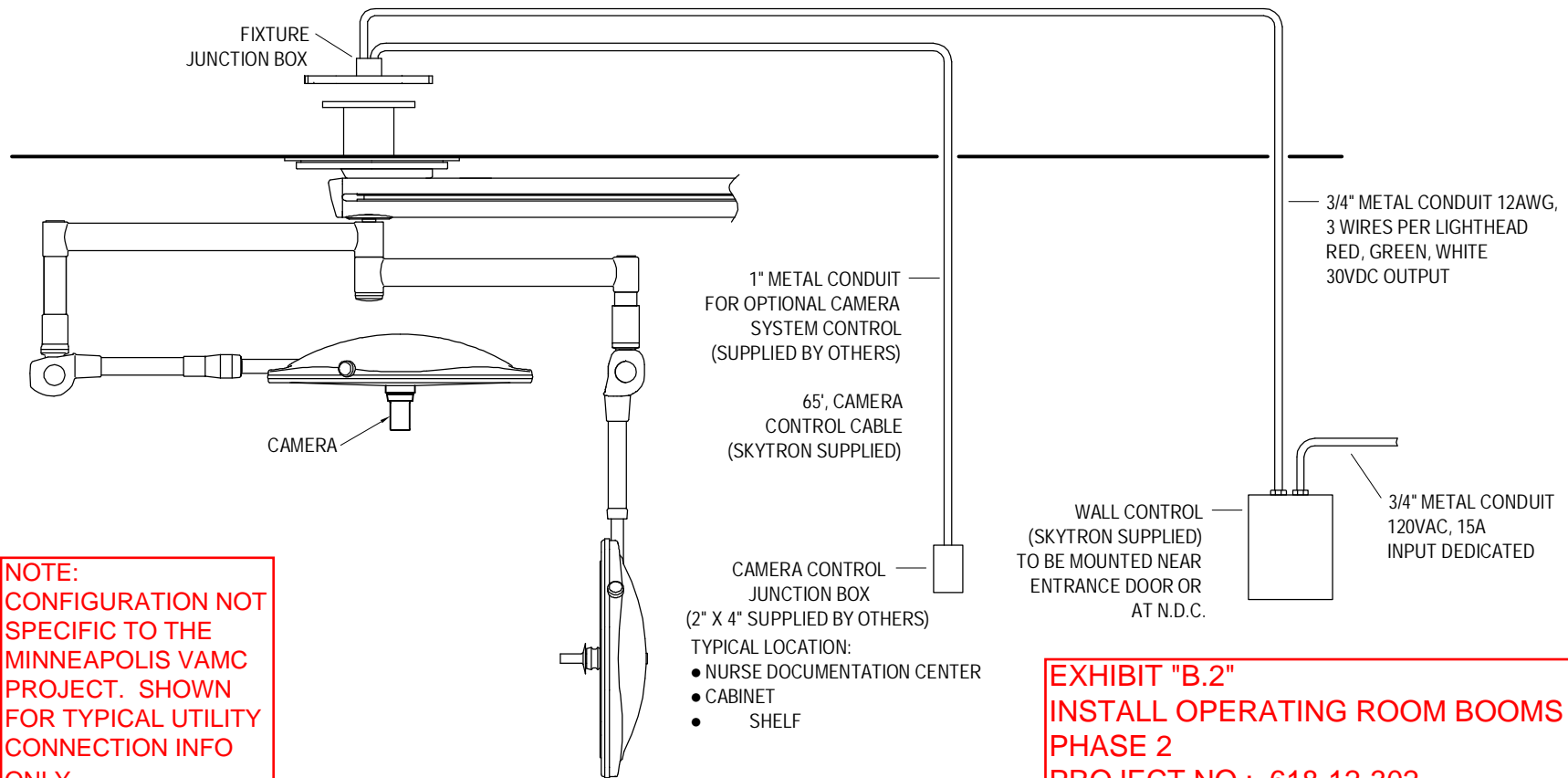
DATE: _____



THIS FIXTURE IS AN EXAMPLE AND IS TO BE
USED ONLY FOR WIRING INFORMATION



SURGICAL LIGHT ARM



NOTE:
CONFIGURATION NOT
SPECIFIC TO THE
MINNEAPOLIS VAMC
PROJECT. SHOWN
FOR TYPICAL UTILITY
CONNECTION INFO
ONLY

1" METAL CONDUIT
FOR OPTIONAL CAMERA
SYSTEM CONTROL
(SUPPLIED BY OTHERS)

65', CAMERA
CONTROL CABLE
(SKYTRON SUPPLIED)

CAMERA CONTROL
JUNCTION BOX
(2" X 4" SUPPLIED BY OTHERS)

TYPICAL LOCATION:

- NURSE DOCUMENTATION CENTER
- CABINET
- SHELF

3/4" METAL CONDUIT 12AWG,
3 WIRES PER LIGHthead
RED, GREEN, WHITE
30VDC OUTPUT

WALL CONTROL
(SKYTRON SUPPLIED)
TO BE MOUNTED NEAR
ENTRANCE DOOR OR
AT N.D.C.

3/4" METAL CONDUIT
120VAC, 15A
INPUT DEDICATED

EXHIBIT "B.2"
INSTALL OPERATING ROOM BOOMS
PHASE 2
PROJECT NO.: 618-12-302
BOOM TYPICAL DRAWING **PG 6 OF 6**



SPECIAL GROUNDING REQUIREMENTS

PROPER PERFORMANCE AND SAFETY OF THIS
FIXTURE CAN ONLY BE ACHIEVED BY AN ADEQUATE
GROUNDING SYSTEM. FIXTURE GROUND MUST BE A
DEDICATED GROUND POINT ULTIMATELY BONDED
TO THE FACILITIES GROUNDING SYSTEM TO
PREVENT THE MIGRATION OF ELECTRICAL
INTERFERENCE GENERATED BY OTHER DEVICES.



- 2 DEDICATED CONDUIT RUNS REQUIRED AT WALL CONTROL
TO SEPERATE 120VAC INPUT LINES FROM 30VDC OUTPUT
LINES TO LIGHT FIXTURE TO PREVENT THE MIGRATION OF
ELECTRICAL MAGNETIC INTERFERENCE WHICH WILL DISRUPT
THE OPERATION OF THE LIGHT.
- NO SHARED GROUND. EACH LIGHthead MUST HAVE
SEPERATE INDIVIDUAL GROUND WIRE.

INITIAL: _____

DATE: _____