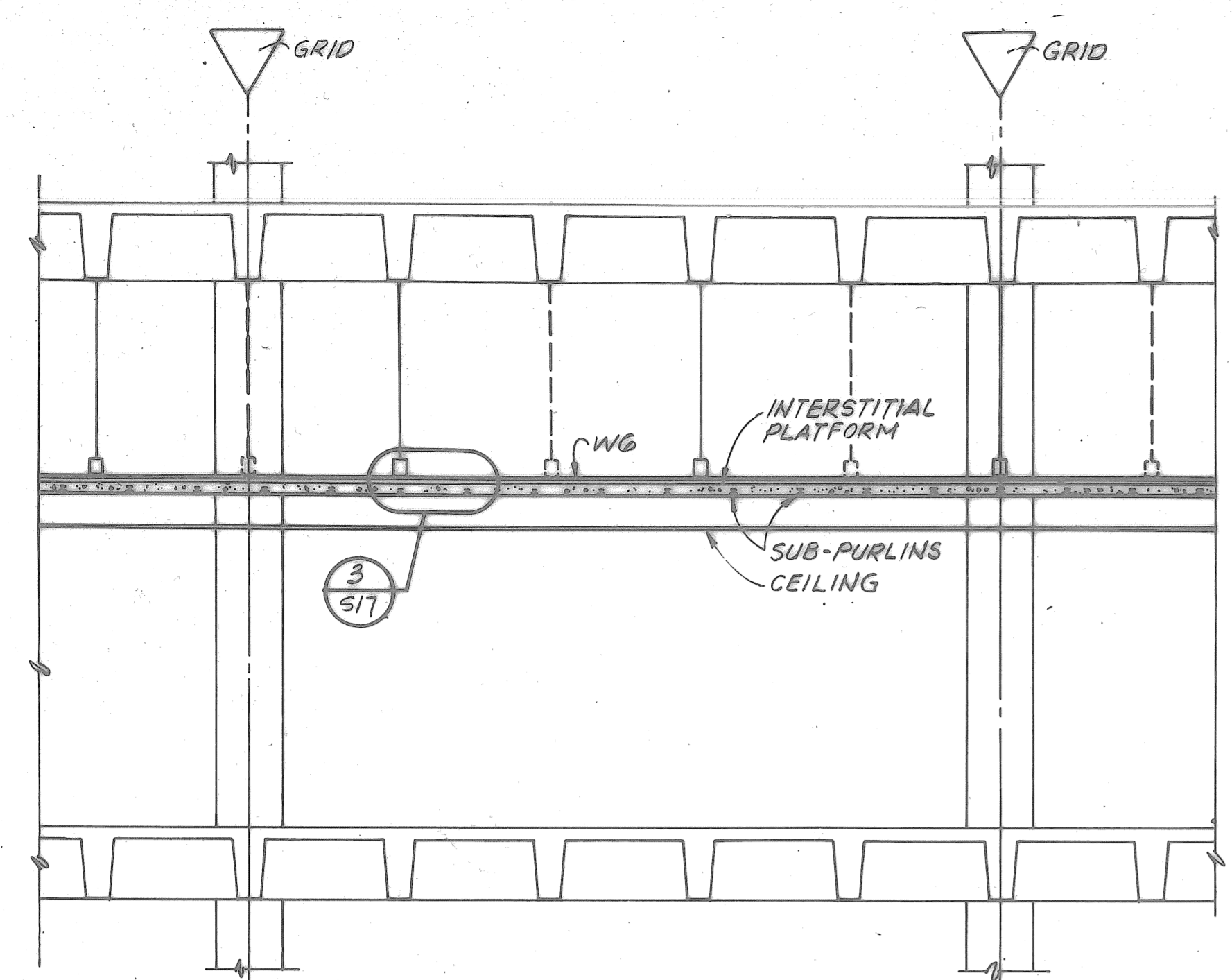
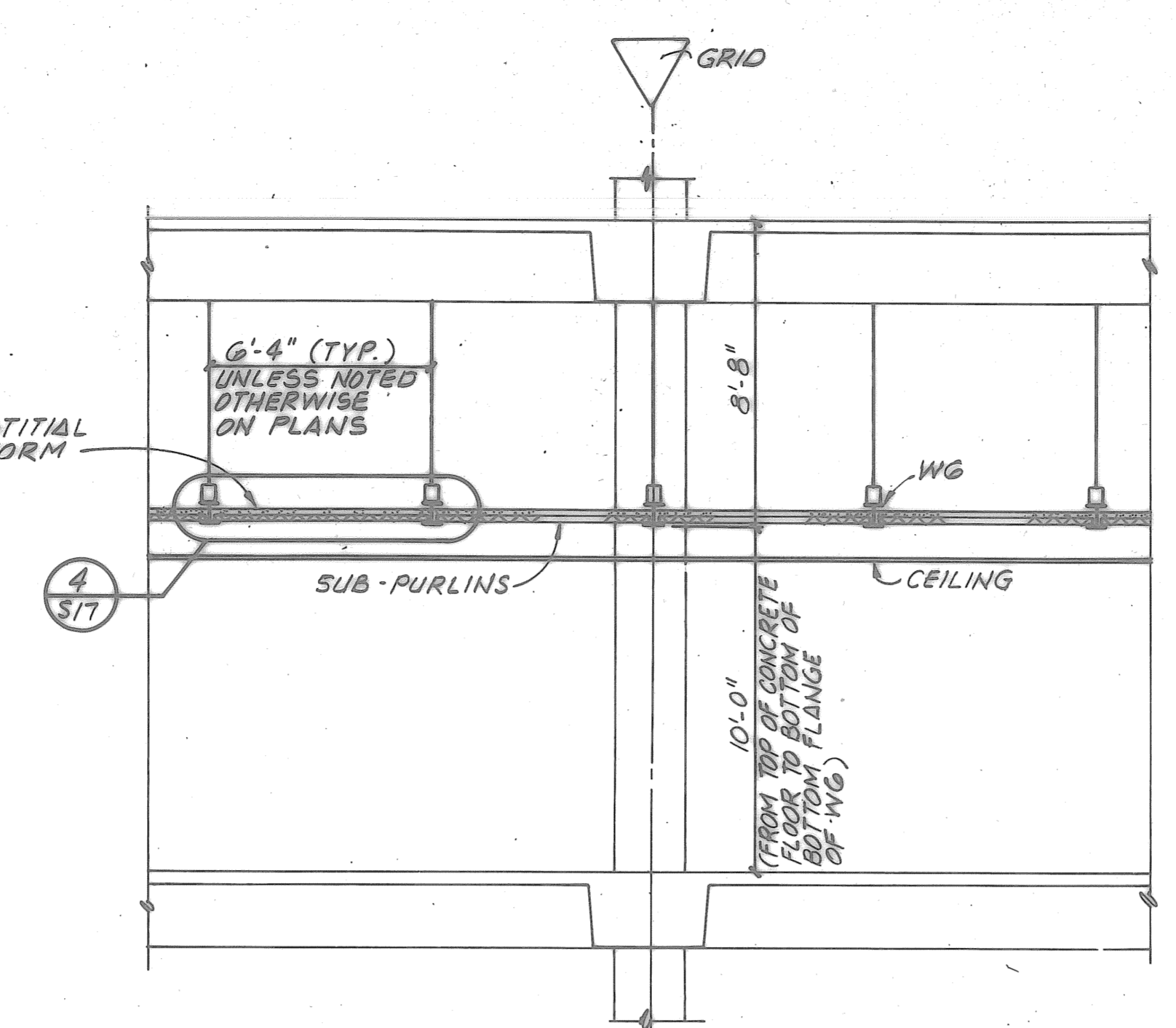


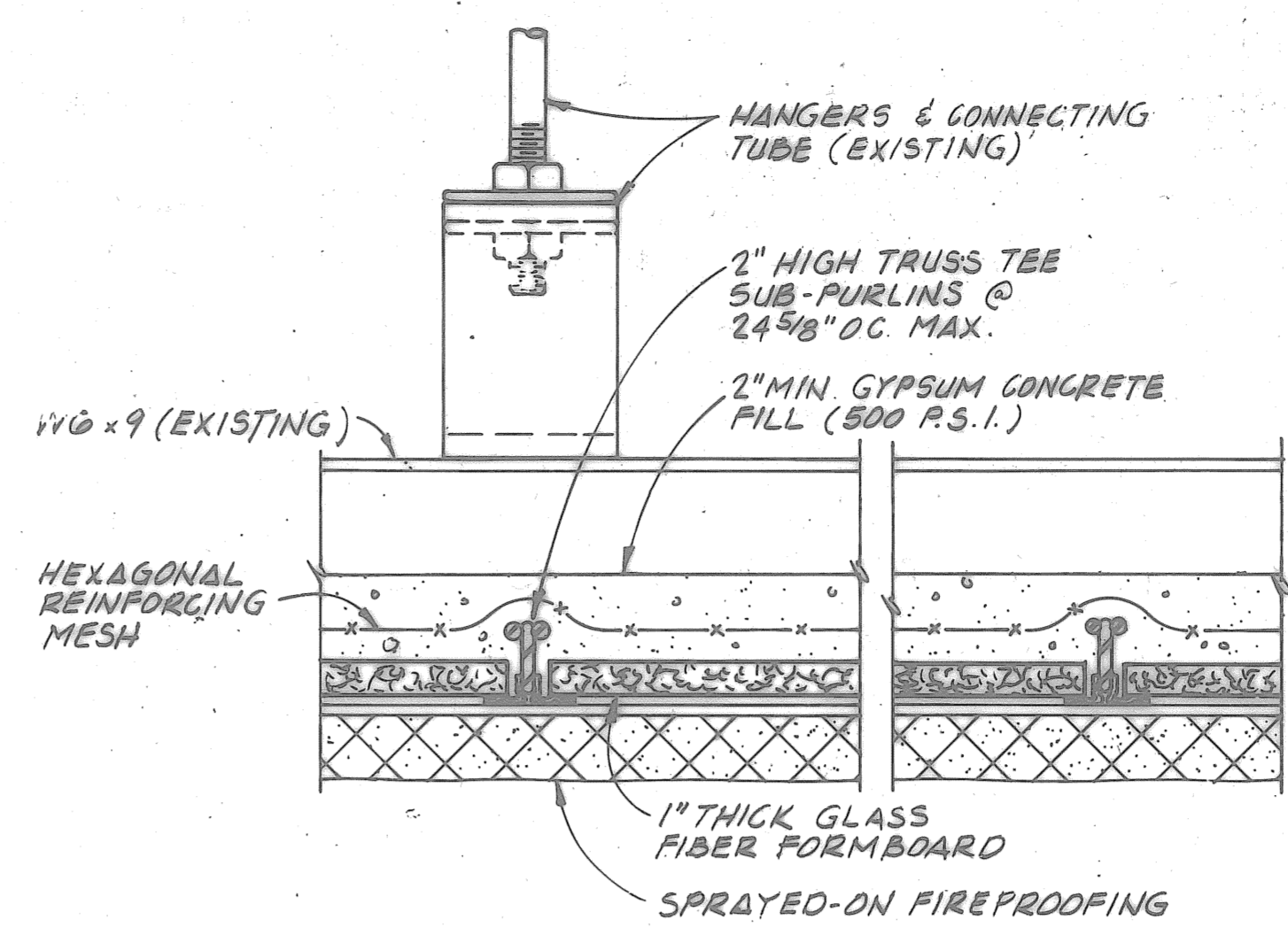
THIS BLOCK FOR VOL. 1
one eighth inch = one foot
one quarter inch = one foot
one half inch = one foot
three quarters inch = one foot
one inch = one foot
one and one half inches = one foot
two inches = one foot
three inches = one foot
four inches = one foot
five inches = one foot
six inches = one foot
seven inches = one foot
eight inches = one foot
nine inches = one foot
ten inches = one foot
eleven inches = one foot
twelve inches = one foot
thirteen inches = one foot
fourteen inches = one foot
fifteen inches = one foot
sixteen inches = one foot
seventeen inches = one foot
eighteen inches = one foot
nineteen inches = one foot
twenty inches = one foot
twenty one inches = one foot
twenty two inches = one foot
twenty three inches = one foot
twenty four inches = one foot
twenty five inches = one foot
twenty six inches = one foot
twenty seven inches = one foot
twenty eight inches = one foot
twenty nine inches = one foot
thirty inches = one foot
thirty one inches = one foot
thirty two inches = one foot
thirty three inches = one foot
thirty four inches = one foot
thirty five inches = one foot
thirty six inches = one foot
thirty seven inches = one foot
thirty eight inches = one foot
thirty nine inches = one foot
forty inches = one foot
forty one inches = one foot
forty two inches = one foot
forty three inches = one foot
forty four inches = one foot
forty five inches = one foot
forty six inches = one foot
forty seven inches = one foot
forty eight inches = one foot
forty nine inches = one foot
fifty inches = one foot
fifty one inches = one foot
fifty two inches = one foot
fifty three inches = one foot
fifty four inches = one foot
fifty five inches = one foot
fifty six inches = one foot
fifty seven inches = one foot
fifty eight inches = one foot
fifty nine inches = one foot
sixty inches = one foot
sixty one inches = one foot
sixty two inches = one foot
sixty three inches = one foot
sixty four inches = one foot
sixty five inches = one foot
sixty six inches = one foot
sixty seven inches = one foot
sixty eight inches = one foot
sixty nine inches = one foot
seventy inches = one foot
seventy one inches = one foot
seventy two inches = one foot
seventy three inches = one foot
seventy four inches = one foot
seventy five inches = one foot
seventy six inches = one foot
seventy seven inches = one foot
seventy eight inches = one foot
seventy nine inches = one foot
eighty inches = one foot
eighty one inches = one foot
eighty two inches = one foot
eighty three inches = one foot
eighty four inches = one foot
eighty five inches = one foot
eighty six inches = one foot
eighty seven inches = one foot
eighty eight inches = one foot
eighty nine inches = one foot
ninety inches = one foot
ninety one inches = one foot
ninety two inches = one foot
ninety three inches = one foot
ninety four inches = one foot
ninety five inches = one foot
ninety six inches = one foot
ninety seven inches = one foot
ninety eight inches = one foot
ninety nine inches = one foot
one hundred inches = one foot



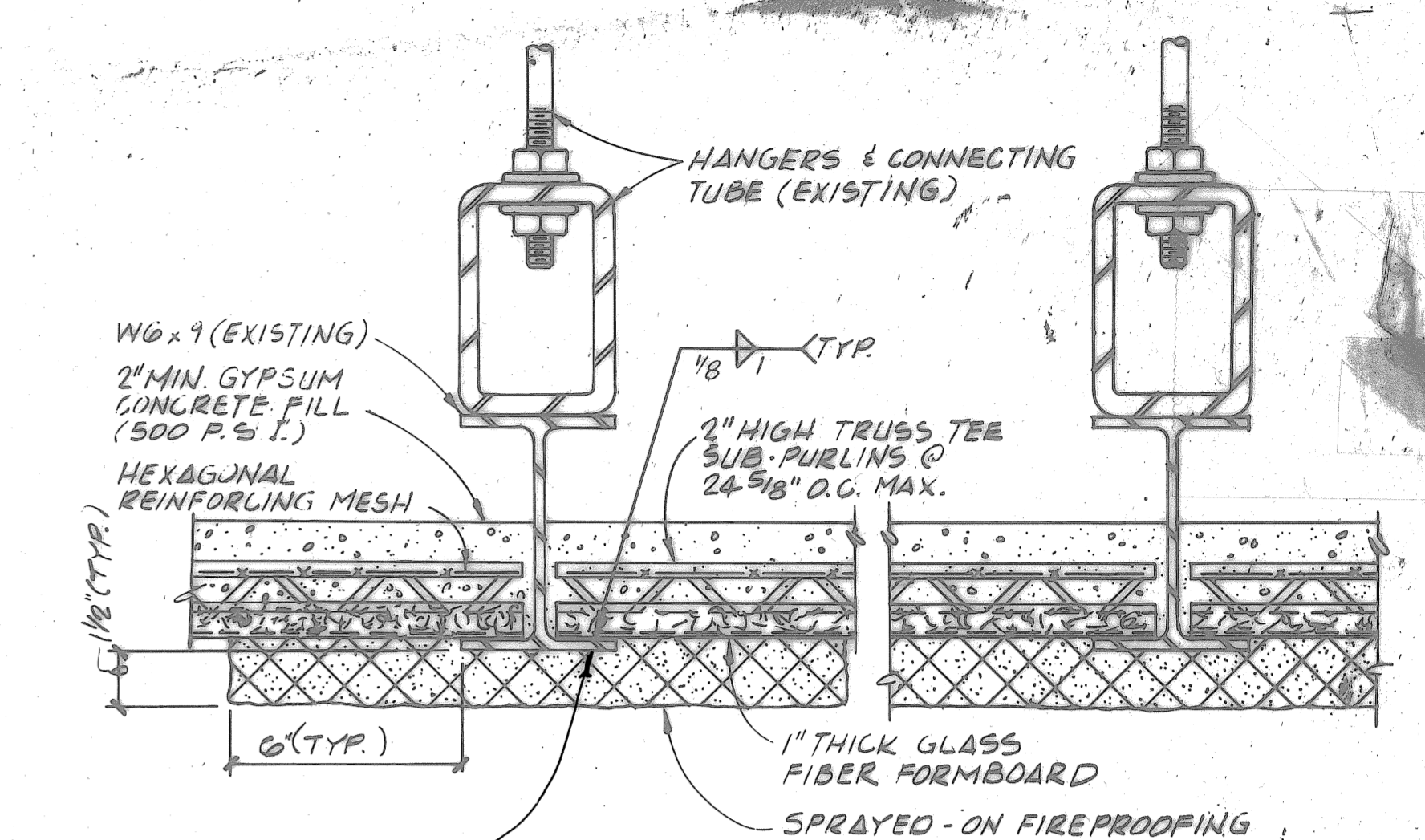
SECTION 1
SCALE: 1/4" = 1'-0"



SECTION 2
SCALE: 1/4" = 1'-0"

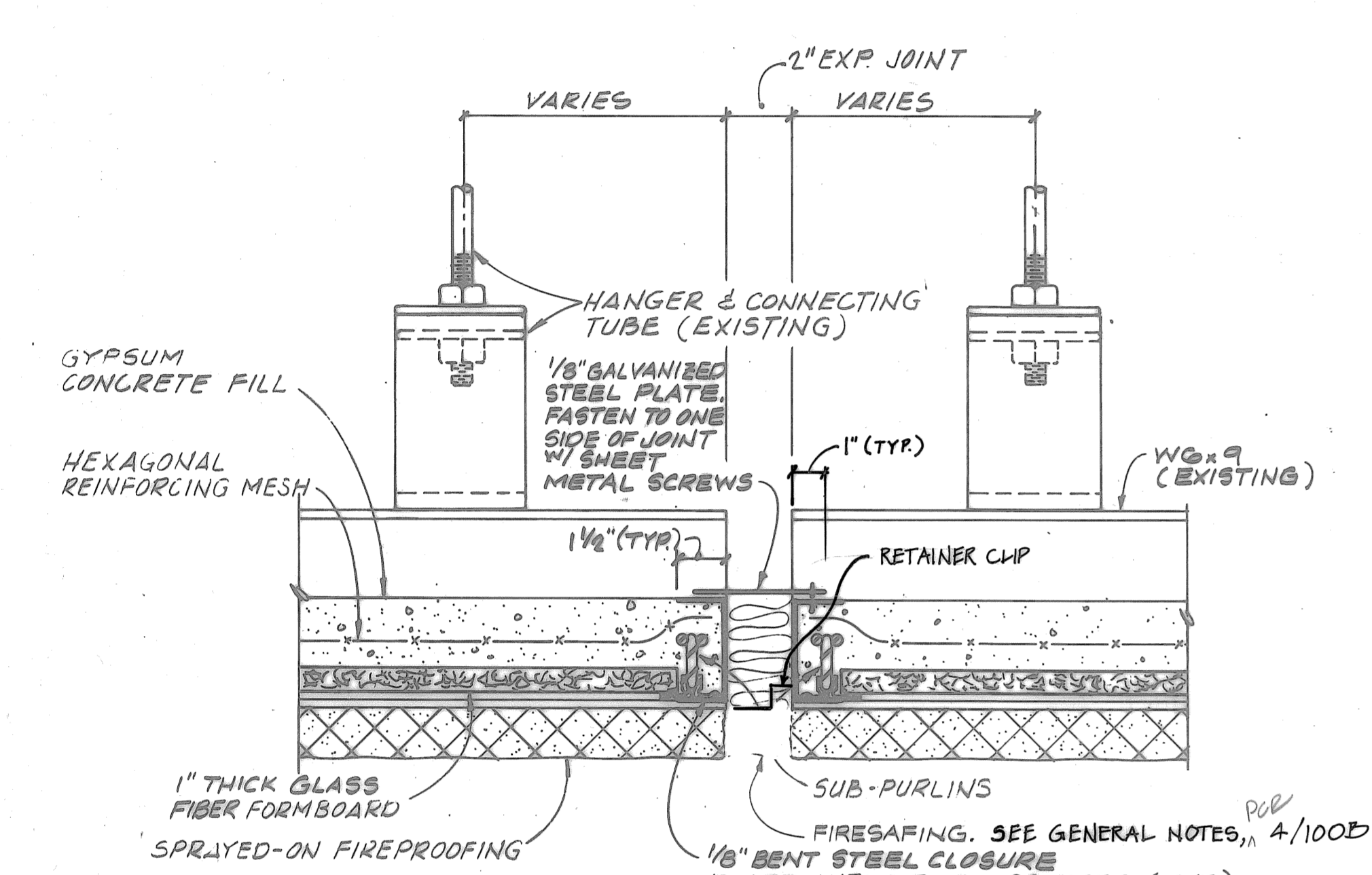


DETAIL 3
SCALE: 3" = 1'-0"



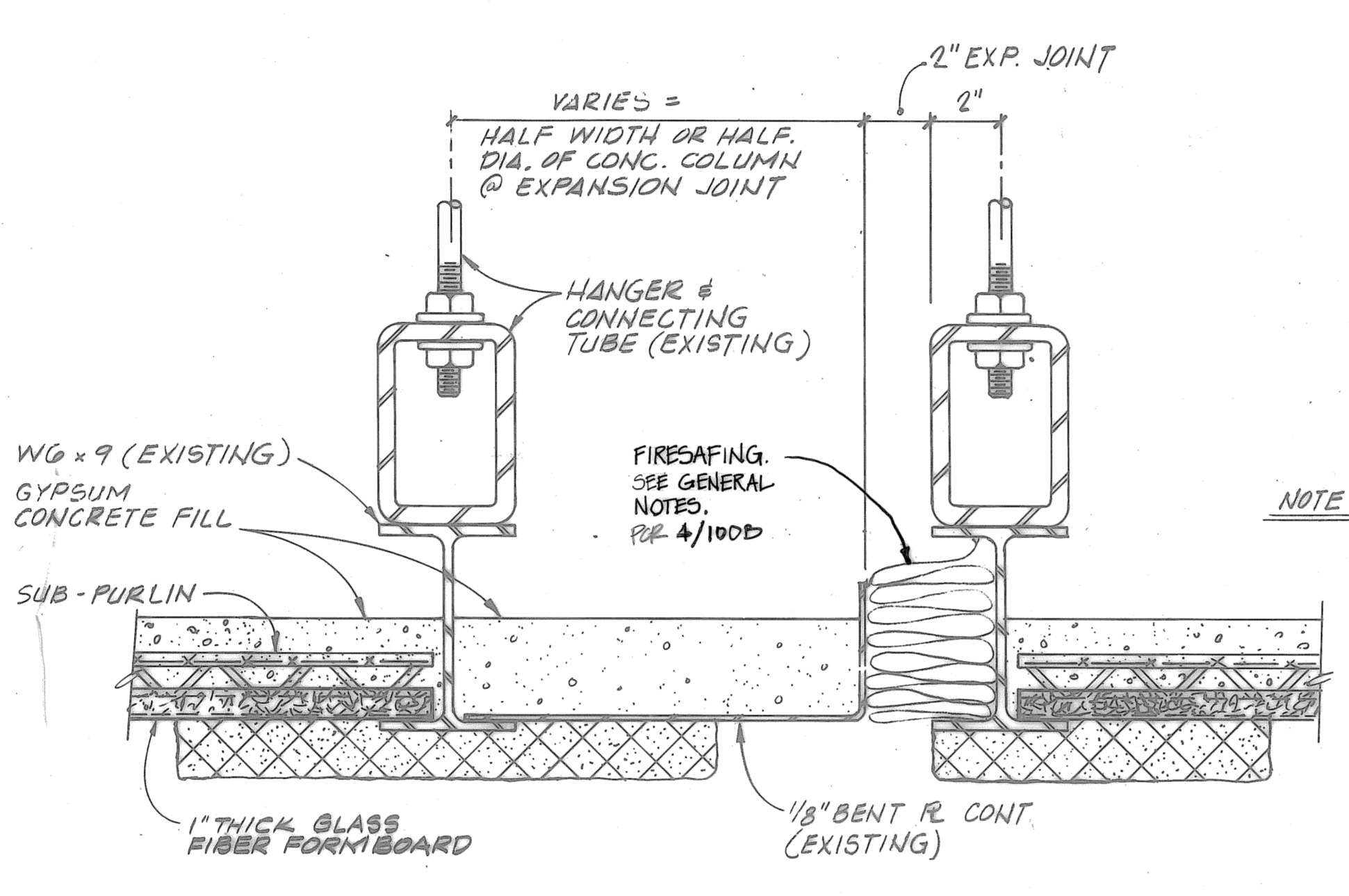
DETAIL 4
SCALE: 3" = 1'-0"

NOTES:
1. SUB-PURLINS SHALL BE DESIGNED BY MANUFACTURER TO CARRY A SUPERIMPOSED LIVE LOAD OF 15 P.S.F. AND A SUPERIMPOSED DEAD LOAD OF 15 P.S.F., IN ADDITION TO SELF-WEIGHT OF FLOOR DECK SYSTEM.
2. TOTAL DEFLECTION OF THE SUB-PURLINS SHALL NOT EXCEED L/240 WHEN SUBJECTED TO THE ABOVE LOADS. "L" IS THE CLEAR SPAN OF THE SUB-PURLIN.



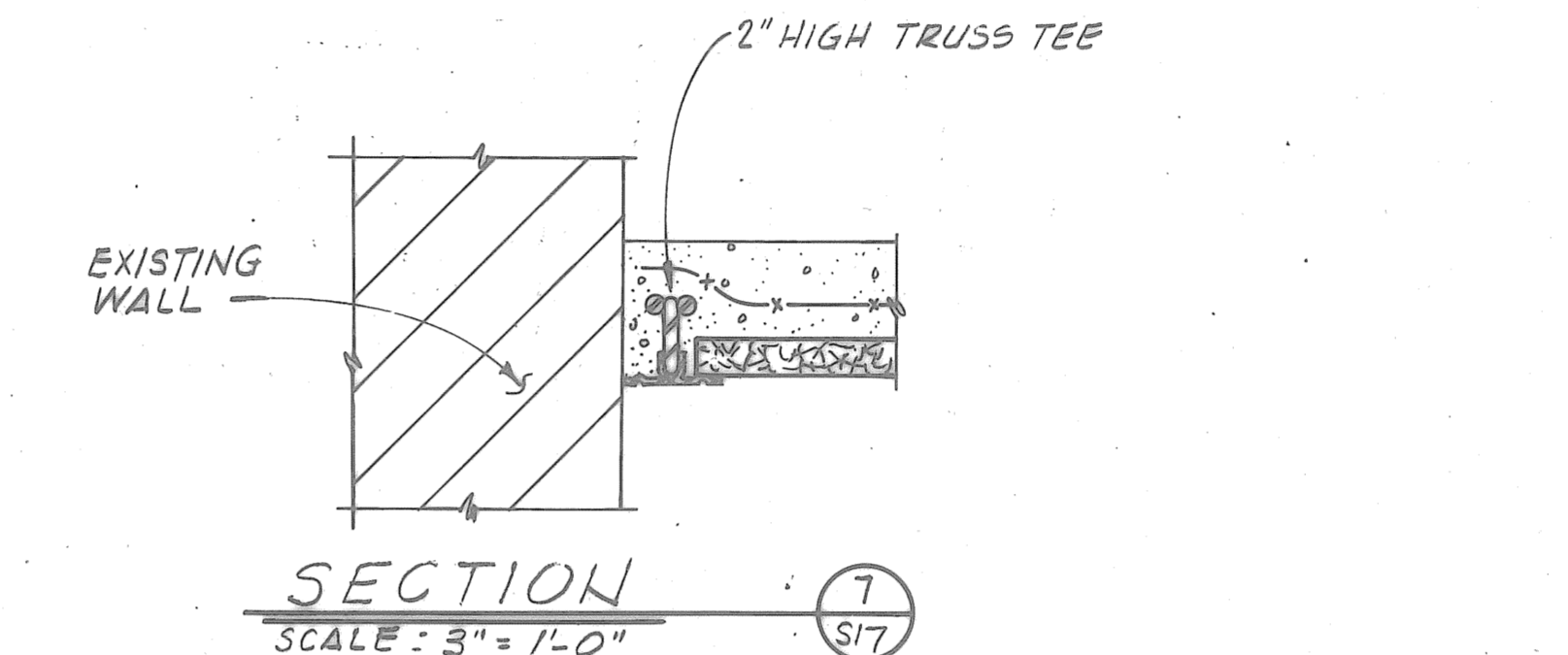
SECTION 5
SCALE: 3" = 1'-0"

NOTE: THIS SECTION APPLIES AT EXPANSION JOINTS WITH SUB-PURLINS ORIENTED PARALLEL TO THE JOINT. SEE PLANS FOR ACTUAL LOCATIONS.



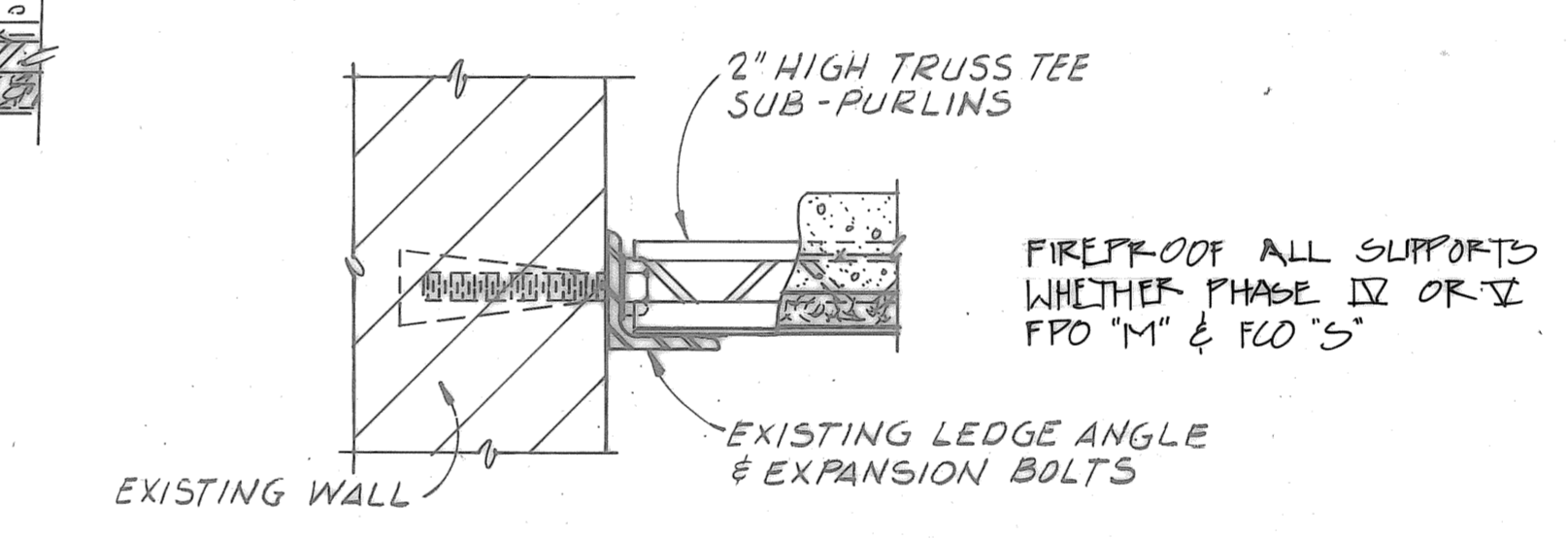
SECTION 6
SCALE: 3" = 1'-0"

NOTE: THIS SECTION APPLIES AT EXPANSION JOINTS WITH SUB-PURLINS ORIENTED PERPENDICULAR TO THE JOINT. SEE PLANS FOR ACTUAL LOCATIONS.



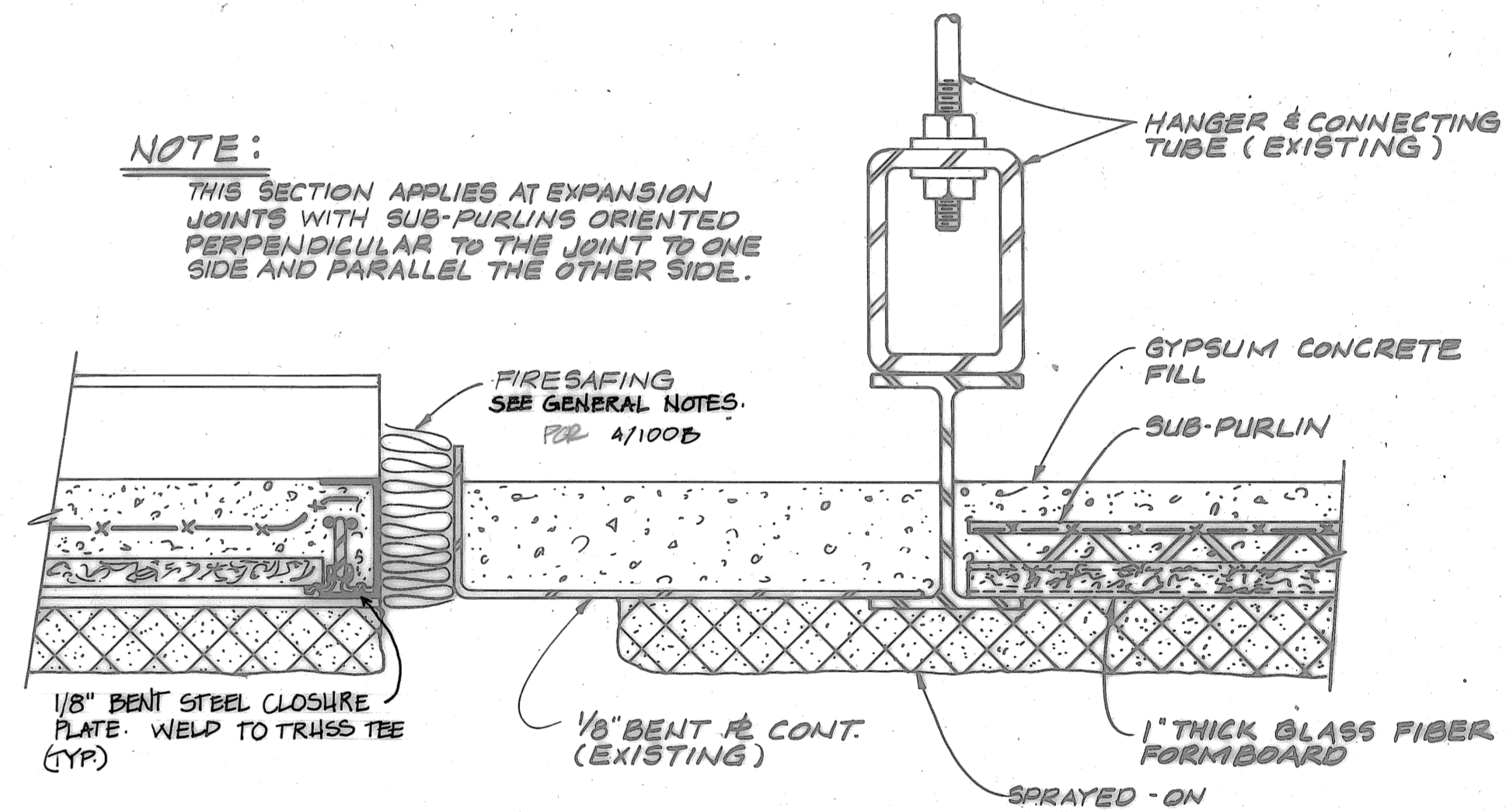
SECTION 7
SCALE: 3" = 1'-0"

NOTE: THIS SECTION APPLIES AT LOCATIONS WHERE DECK MEETS A CONCRETE WALL AND THE SUB-PURLINS ARE ORIENTED PARALLEL TO THE WALL. SEE PLANS FOR ACTUAL LOCATIONS.

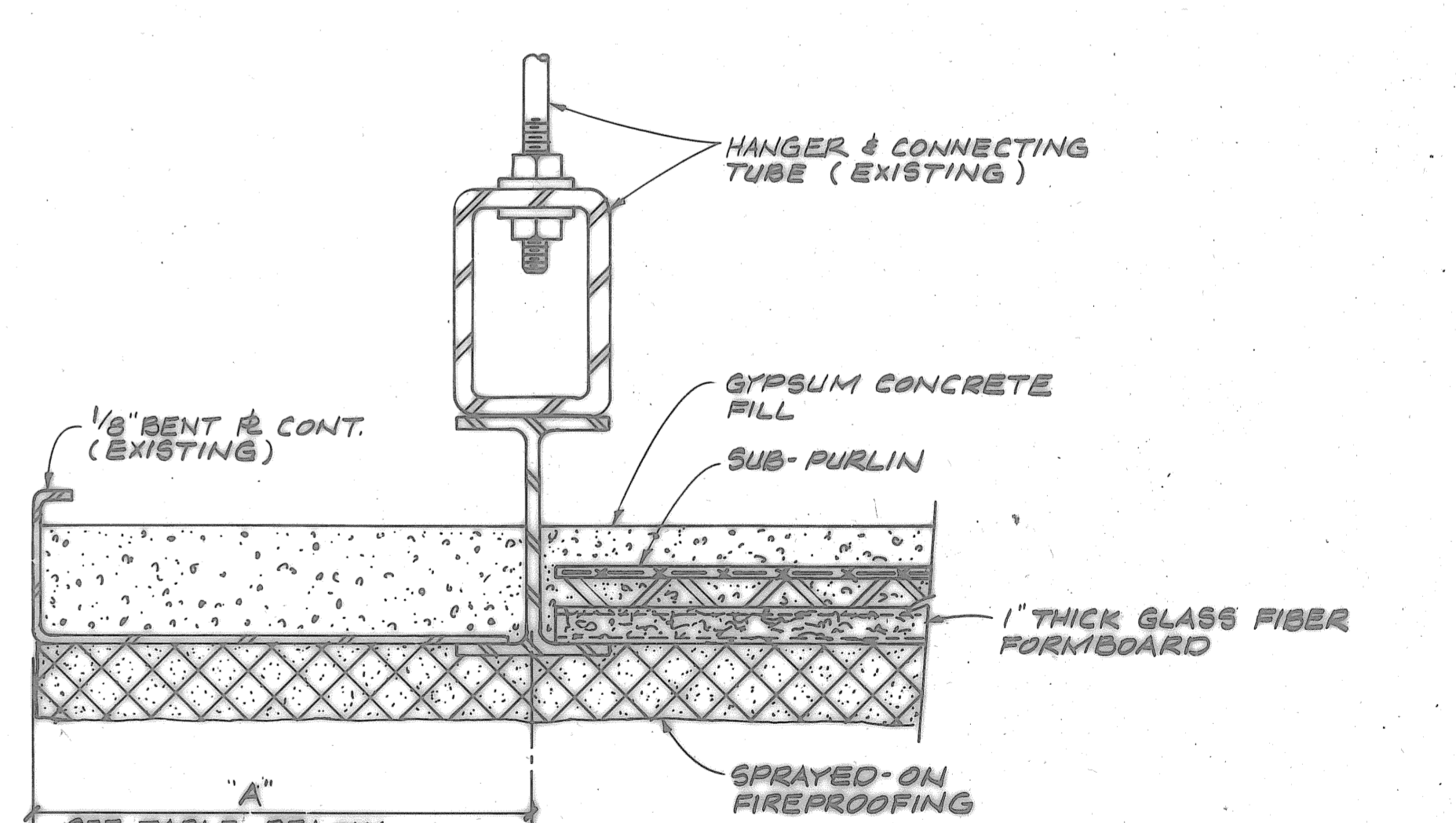


SECTION 8
SCALE: 3" = 1'-0"

NOTE: THIS SECTION APPLIES AT LOCATIONS WHERE SUB-PURLINS ORIENTED PERPENDICULAR TO A CONCRETE WALL OR COLUMN MEET THE WALL OR COLUMN. SEE PLANS FOR ACTUAL LOCATIONS.



SECTION 12
SCALE: 3" = 1'-0"



SECTION 13
SCALE: 3" = 1'-0"

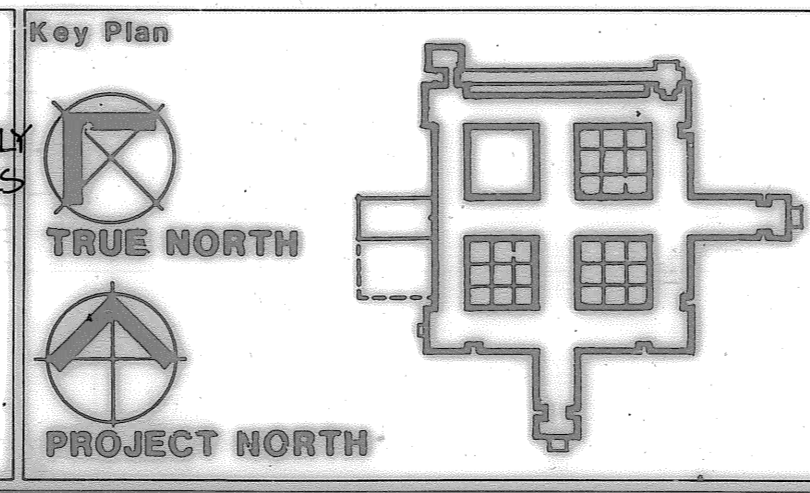
TABLE

DESCRIPTION OF CONDITION	DIMENSION "A"
1. AT METAL PANEL EXTERIOR EXCEPT FIRST FLOOR	1'-0 1/2"
2. AT BRICK EXTERIOR	1'-1"
3A. AT NOTCHES AT RECESSED CURTAIN WALLS ADJACENT TO METAL PANEL AREAS	11"
3B. AT NOTCHES AT RECESSED CURTAIN WALLS ADJACENT TO BRICK AREAS	9"
4. ADJOINING BASEMENT WALLS	11 1/2"
5. AT FIRST FLOOR NORTH & WEST SIDES @ METAL PANEL	7'-1-2-1076
6. ADJOINING FOURTH FLOOR COURT	1'-1"
7. AT FOURTH FLOOR ADJOINING PRECAST GROW	1'-1"
8. AT FLOOR EDGE DETAIL AT EXTERIOR WALLS	1'-1"

NO BUILT - 8/29/08

Revisions:
4/10/07 DETAIL 4/10/07 REVISE: FILLET WELDS AT PRESENTLY SHOWN BETWEEN SUB-PURLIN AND PURLIN TO 1/2" MINIMUM DIAMETER. PUPPLE WELDS AT EACH SIDE OF THE SUB-PURLIN.
4/10/07 DETAIL 4/10/07 REVISE: PROVIDE SAVING CLIPS AT 24" O.C. TO ANCHOR FIRESAFING IN PLACE WELD SAVING CLIPS TO BENT STEEL PLATES.

General Notes:
4/10/07 MAKE PROVISION IN THIS CONTRACT FOR FURNISHING AND INSTALLING ONE THOUSAND LINEAR FEET OF 2-1/2" x 2-1/2" x 1/4" ANGLES AND EIGHT HUNDRED 5/8" DIAMETER x 4" EXPANSION ANCHORS. THE ANGLES ARE TO BE FURNISHED IN APPROXIMATELY FOR HUNDRED PIECES OF VARYING LENGTHS AND ANCHORED TO EXISTING CONCRETE WALLS OF COLUMNS USING THE EXPANSION ANCHORS. LOCATIONS OF SUCH INSTALLATION TO BE DECIDED DURING CONSTRUCTION.
- SEE 5/5/25 OF TYPICAL INTERSTITIAL FRAMING @ SHEDS
- SEE 3/5/25 & 4/5/25 FOR INTERSTITIAL DECK PENETRATION FRAMING
- FURNISH AND INSTALL AN EXPANSION JOINT COVER SIMILAR TO DETAIL 4/70-755 AT ALL OTHER AREAS OVER THE EXPANSION JOINT IN THE INTERSTITIAL DECK NOT REQUIRED BY DETAIL 4/70-755



I hereby certify that this plan, specification, or report was prepared by me or under my direct supervision and that I am a duly registered Engineer under the laws of the state of Minnesota.
Nachiappan Shanmugam
Registration Number: 10193
7-2-84

MVA GROUP
A Joint Venture
HGA Hammet, Green and Abrahamson, Inc.
SGA Smiley, Giotter and Associates, Inc.
HDR Henningson, Durham and Richardson, Inc.

Drawing Title
SECTIONS AND DETAILS
Approved Project Director
Daniel M. Rode

Project Title
Replacement Medical Center
Building Number
70
Location
Minneapolis, Mn.
Date
7-2-84
Project No.
615-001E
Drawing No.
70-517
Date
7-2-84

EXHIBIT "S.2"
INSTALL OPERATING ROOM BOOMS
PHASE 2
PROJECT NO.: 618-12-302
EXISTING STRUCTURAL DETAILS