

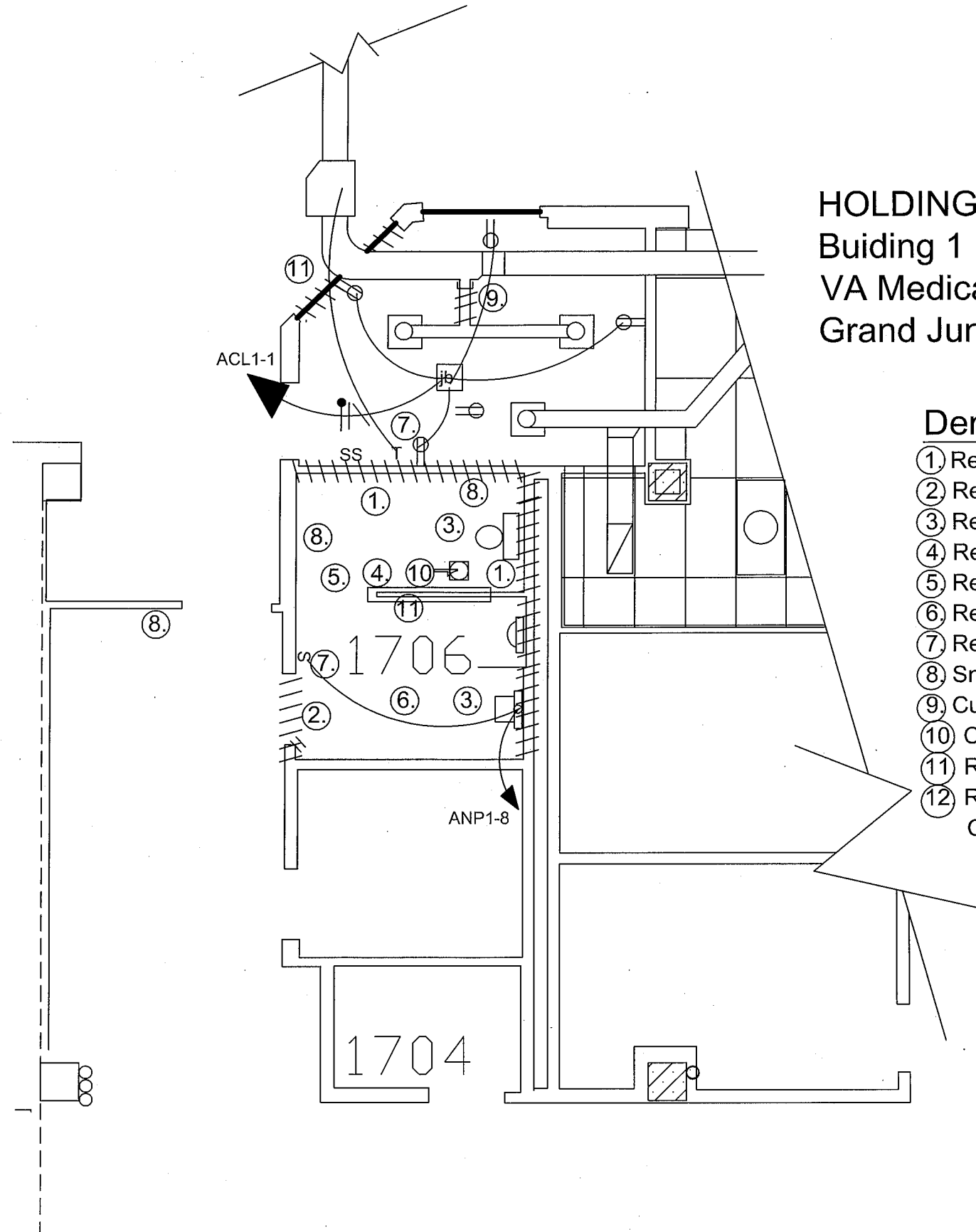
HOLDING CELL      575-12-803

Buiding 1  
VA Medical Center  
Grand Junction, Colorado

CONTRACT DRAWINGS

Cover Sheet  
Grand Junction Site  
Demolition  
Architectural  
Mechanical  
Electrical  
Section A,B/Arch  
Section C/Arch

Medical Center Director
Associate Director
Chief of Staff
Associate Director of Patient Care Services
Chief, Facilities Management
Safety Officer
Information Security Officer
Chief, Police Service
Infection Prevention Officer



HOLDING CELL 575-12-803

Buiding 1

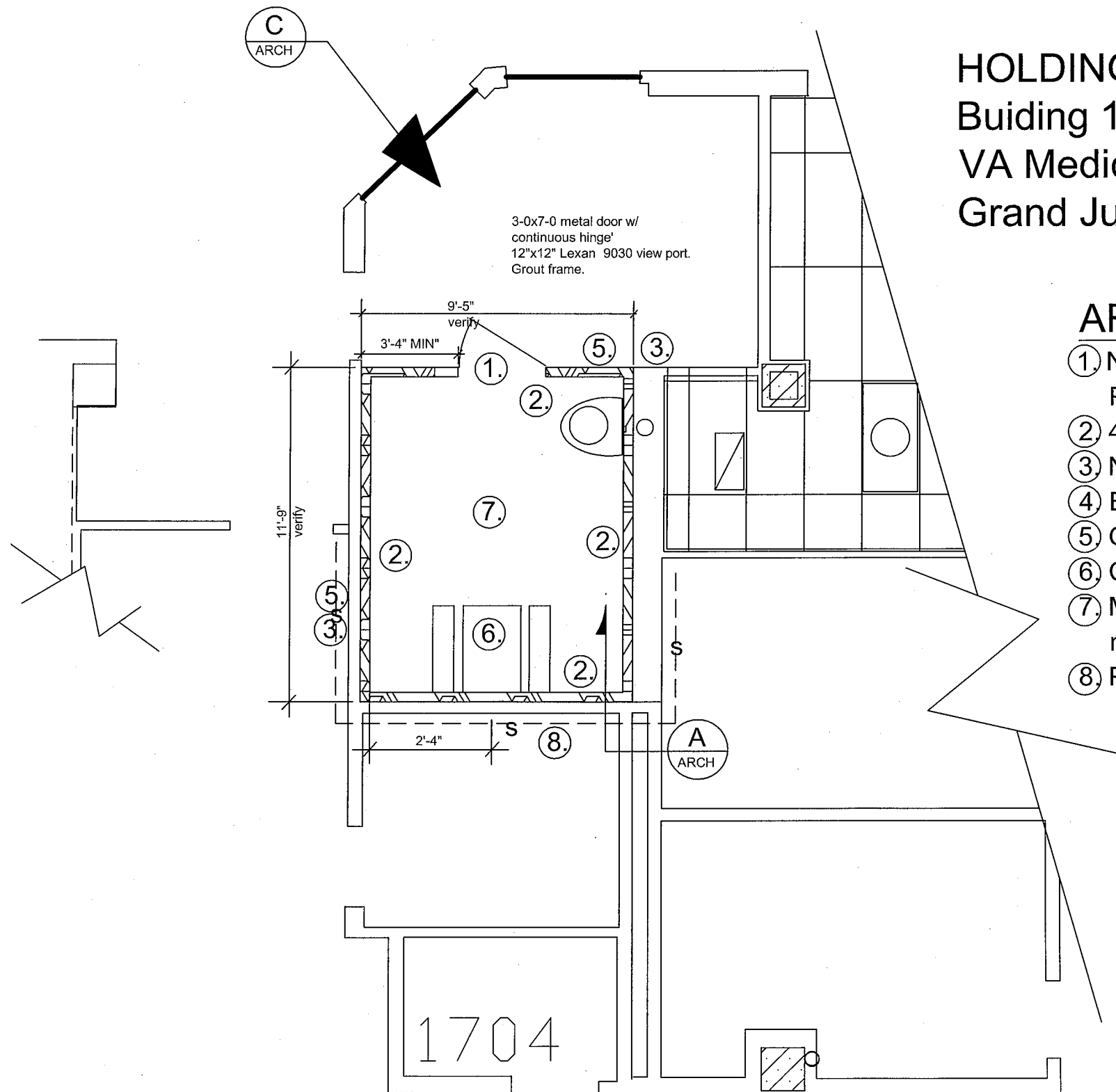
VA Medical Center

Grand Junction, Colorado jhb 1-24-12

3 of 8

### Demolition

- ① Remove wall,
- ② Remove existing door, jamb and wall.
- ③ Remove all plumbing fixtures, toilet items.
- ④ Remove all ceramic tile-walls, floor.
- ⑤ Remove existing acoustical ceiling.
- ⑥ Remove all gyp board.
- ⑦ Relocate switches, receptacles, light and thermostat.
- ⑧ Smoke barrier wall-MAINTAIN by phasing.
- ⑨ Cut & cap. Remove duct to tee.
- ⑩ Cut, cap & remove exhaust duct.
- ⑪ Remove support steel of partition.
- ⑫ Remove wall section below frame & glass.  
Coordinate w/ user.



HOLDING CELL 575-12-803

Buiding 1

VA Medical Center

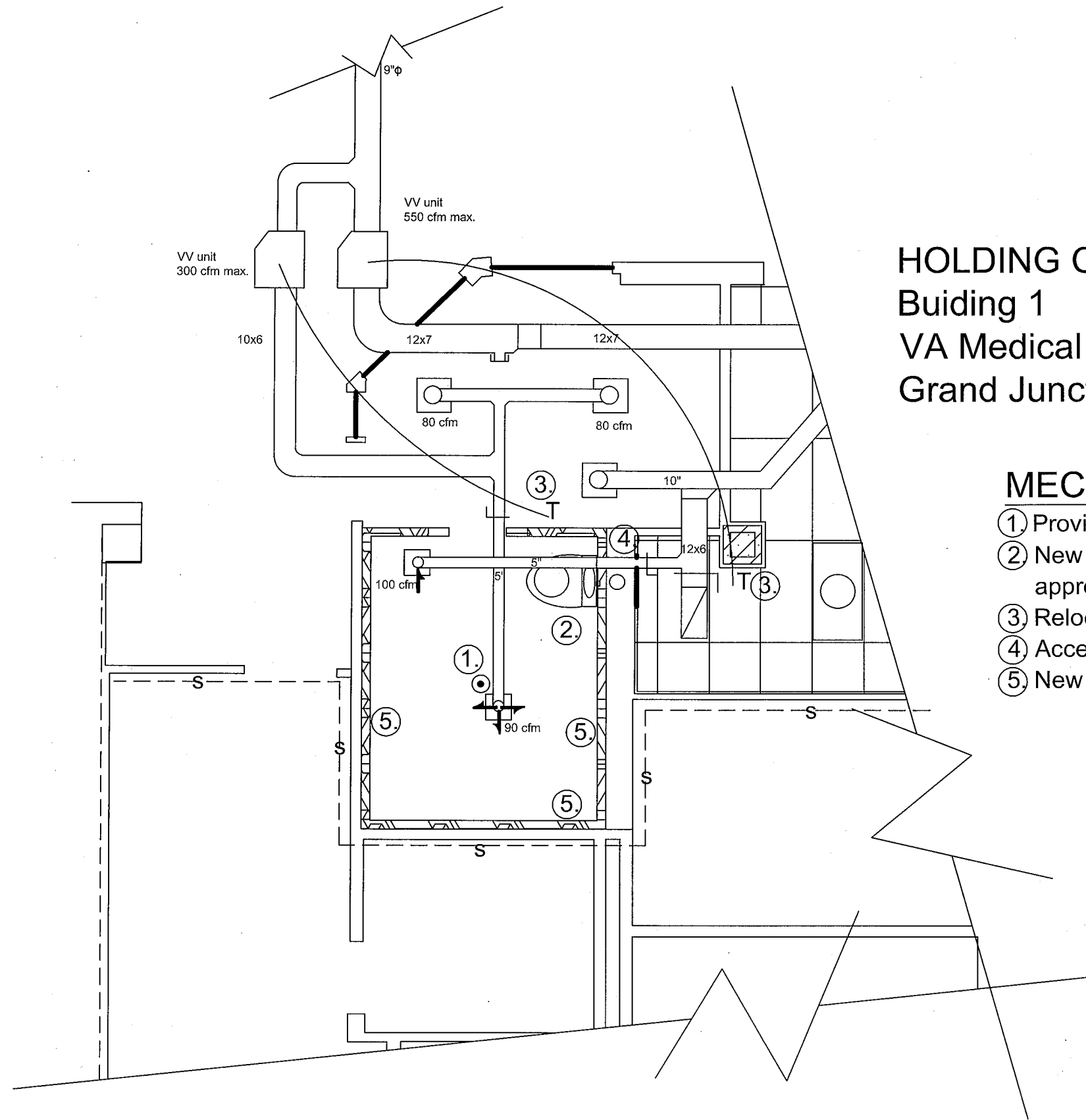
Grand Junction, Colorado

jhb 1-24-12

4 of 8

## ARCHITECTURAL

- ① New metal frame and metal door.  
Provide two(2) thumb latch deadbolts.
- ② 4" CMU to structure above.
- ③ New metal studs & gyp board.
- ④ Epoxy flooring w/ 8" cove.
- ⑤ Gyp board; finish to match.
- ⑥ CRS table & bench seats. See detail B.
- ⑦ Metal joists w/ 1/6" galv. Spot weld to metal joists @ 12" O.C.
- ⑧ Provide smoke barrier prior to masonry constr.



HOLDING CELL 575-12-803

## Buiding 1

VA Medical Center

Grand Junction, Colorado      jhb 1-24-12

jhb 1-24-12

5 of 8

## MECHANICAL

- ① Provide tamper proof, recessed, QR head.
- ② New CRS ACORN 1440-CT-BPH-04-M-PH or approved equal.
- ③ Relocated thermostat.
- ④ Access door to plumbing.
- ⑤ New smoke barrier wall.

HOLDING CELL 575-12-803

Buiding 1

VA Medical Center

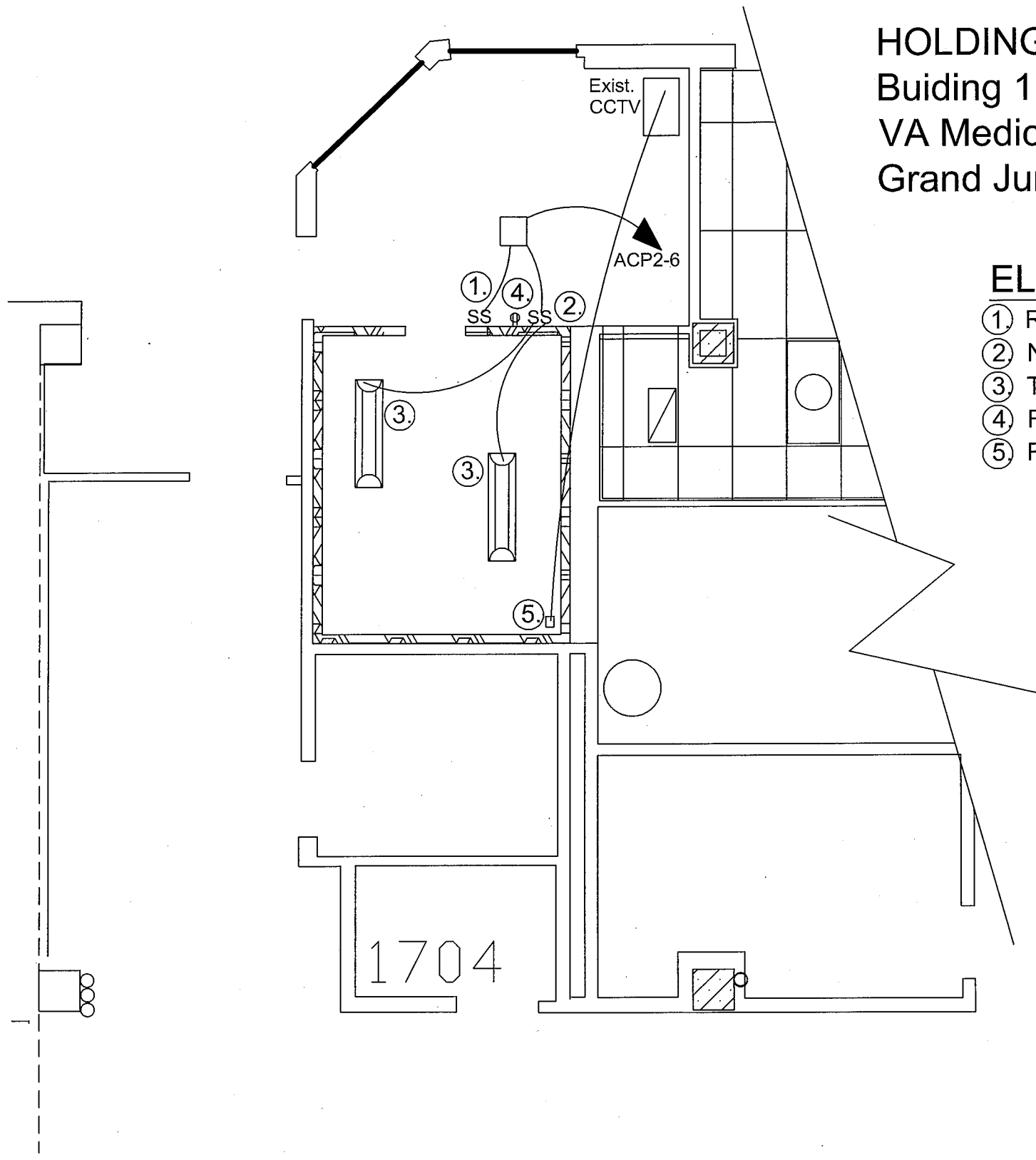
Grand Junction, Colorado

jhb 1-24-12

6 of 8

**ELECTRICAL**

- ① Relocate existing switches.
- ② New switches for lights.
- ③ Tamper proof, LED Cooper FMR or approved equal.
- ④ Relocated receptacle.
- ⑤ Rough-in for CCTV.



HOLDING CELL 575-12-803

Buiding 1

VA Medical Center

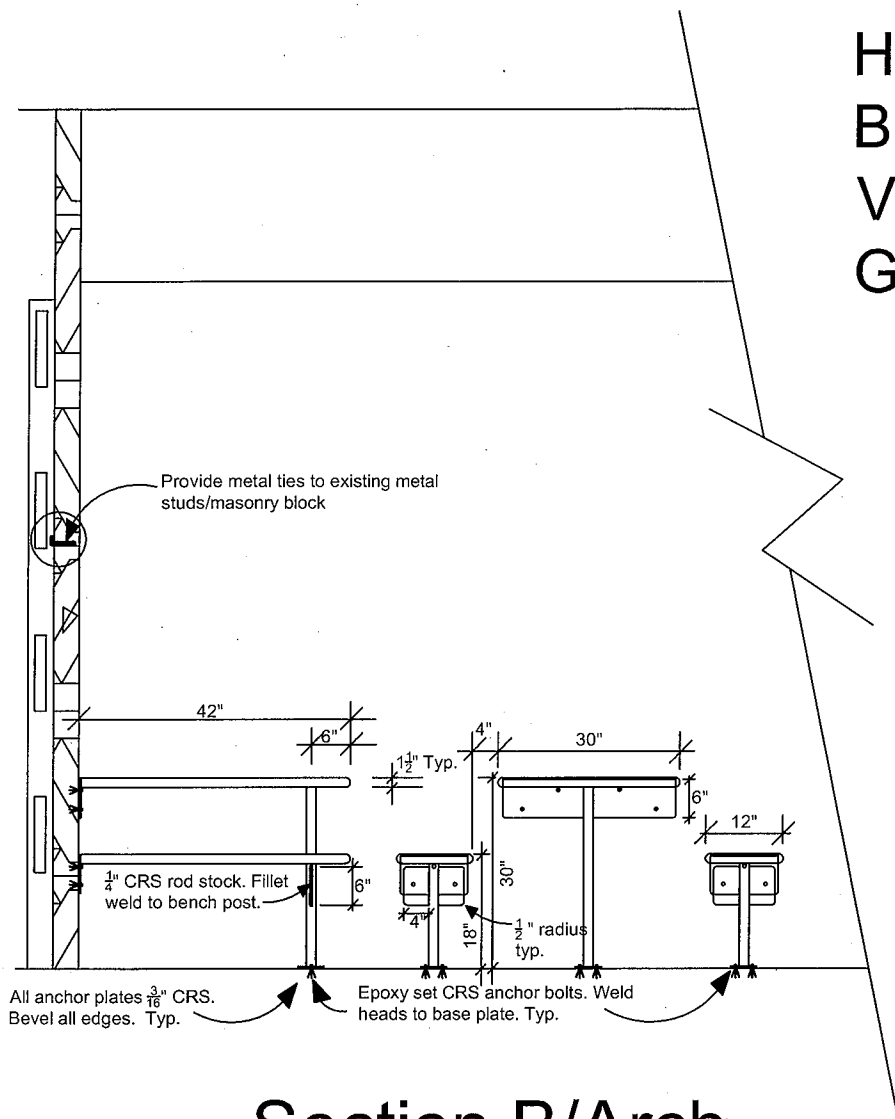
Grand Junction, Colorado

jhb 1-24-12

7 of 8

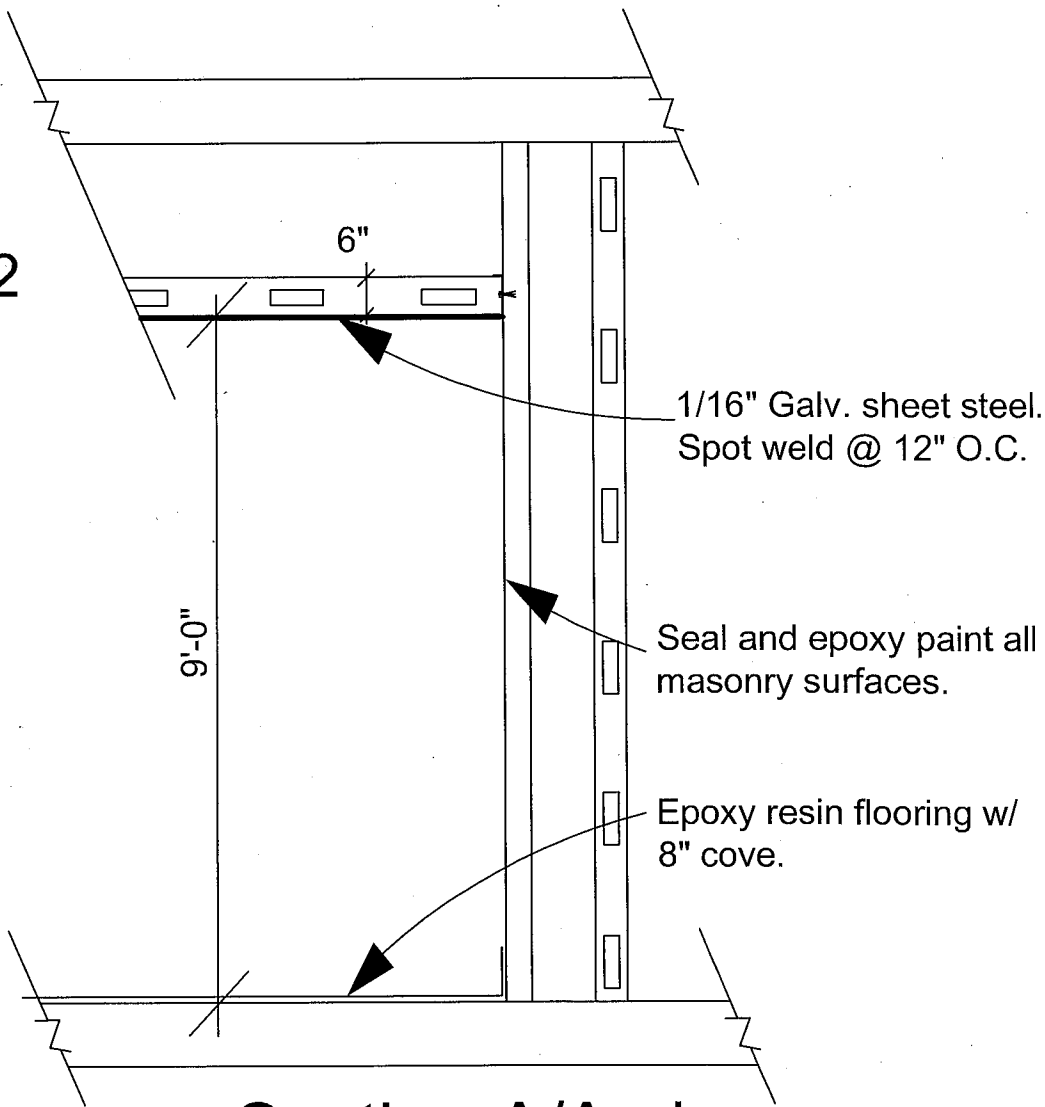
Detail Notes:  
All materials CRS 304, 10 ga.

Not to Scale



Section B/Arch

Not to Scale



Section A/Arch

Not to Scale

# HOLDING CELL 575-12-803

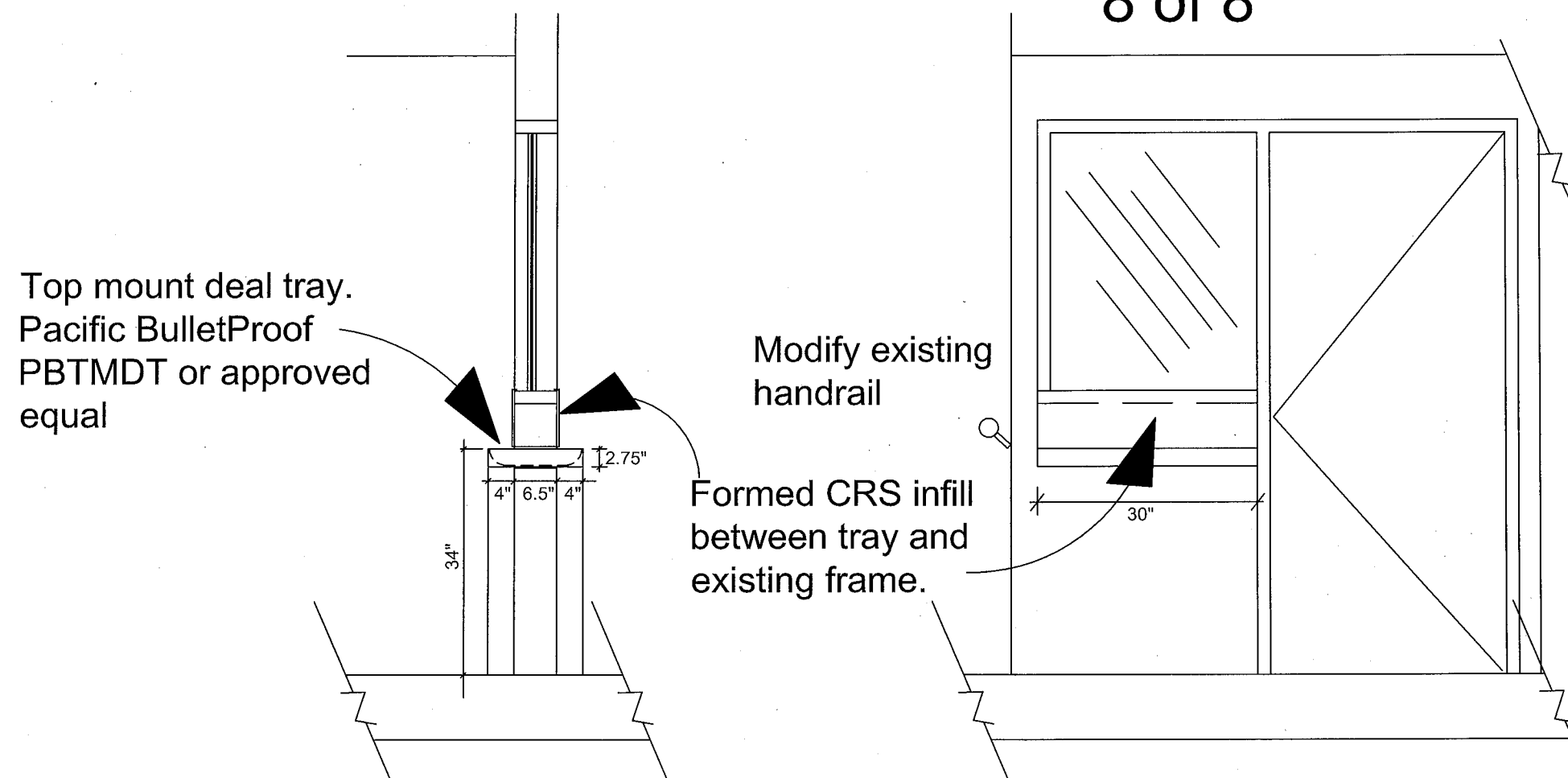
Buiding 1

VA Medical Center

Grand Junction, Colorado

jhb 1-24-12

8 of 8



## Section C/Arch

Not to Scale