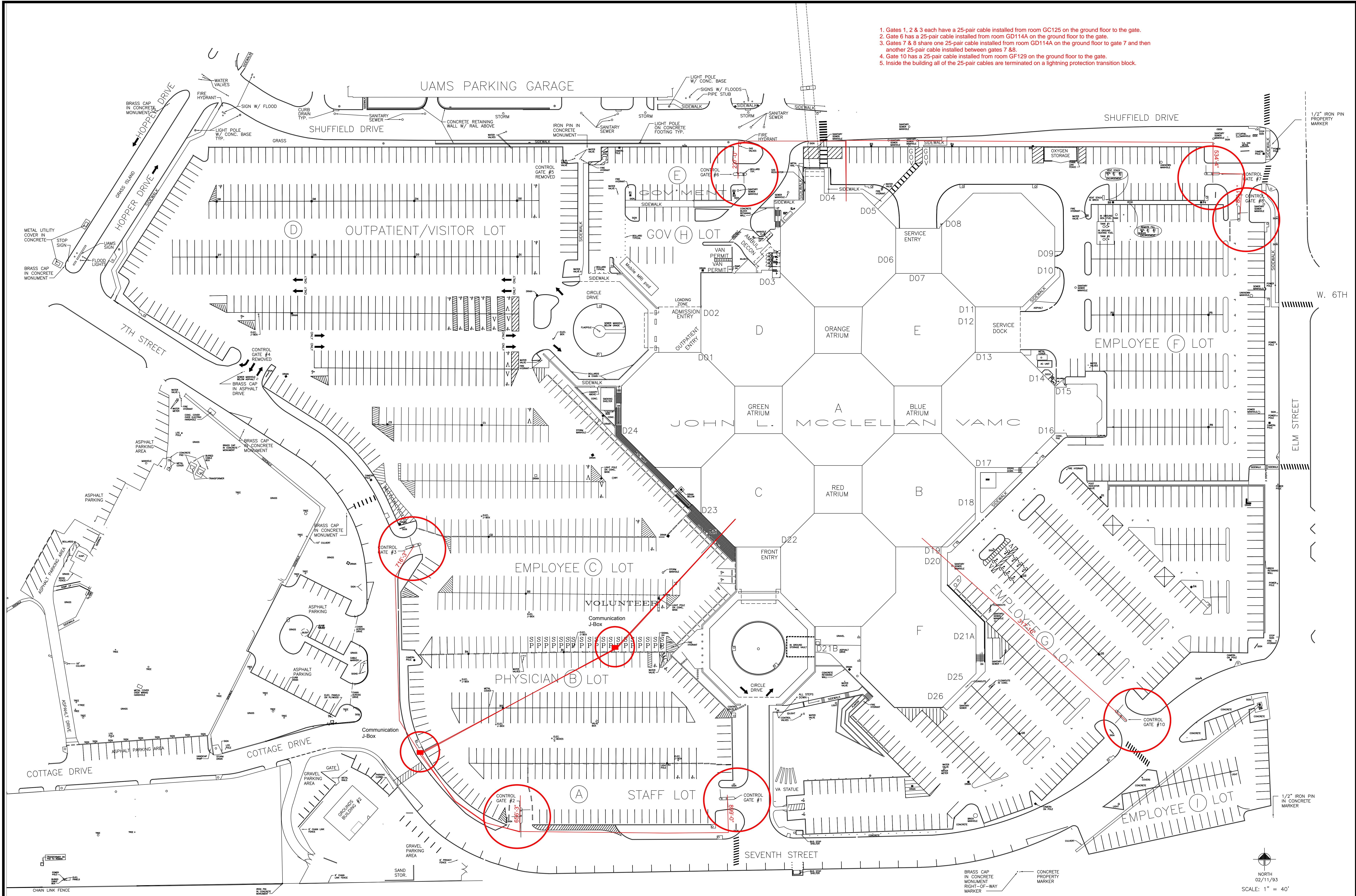


1. Gates 1, 2 & 3 each have a 25-pair cable installed from room GC125 on the ground floor to the gate.  
2. Gate 6 has a 25-pair cable installed from room GD114A on the ground floor to the gate.  
3. Gates 7 & 8 share one 25-pair cable installed from room GD114A on the ground floor to gate 7 and then another 25-pair cable installed between gates 7 & 8.  
4. Gate 10 has a 25-pair cable installed from room GF129 on the ground floor to the gate.  
5. Inside the building all of the 25-pair cables are terminated on a lightning protection transition block.

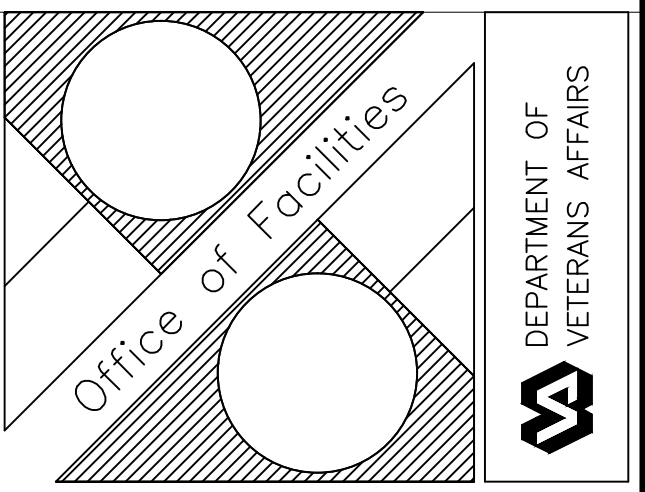


PARKING SURVEY DECON SHOWERS PARKING SURVEY PARKING SPACE DESIGNATIONS LEASED PARKING SPACES REVISED SNOW REMOVAL PLAN SOUTHWEST PARKING LOT EXPANSION REVISED SNOW REMOVAL PLAN PARKING SURVEY POD-F/RESEARCH EXPANSION PARKING SURVEY UAMS EXPANSION/LOTS D, E & H PARKING SURVEY PARKING SURVEY	07-00	GROUNDS BUILDING REPLACED	07-08
	07-00	POD F EXPANSION/ICU ADDITION	09-10
	07-01	PARKING SURVEY	06-11
	01-02	PARKING/SITE PLAN UPDATE	06-13
	11-03		
	11-03		
	10-04		
	12-04		
	06-05		
	07-05		
	06-06		
	07-06		
	06-07		
	06-08		
REVISIONS	DATE	REVISIONS	DATE

Building access labeled D01 thru D26  
Parking access labeled G01 thru G10 (omit 9 & 5)

DRAWING TITLE		PROJECT TITLE		DATE	
PARKING PLAN		J. L. McCLELLAN V.A.M.C. SITE PLAN		07 DEC 06	
BUILDING NUMBER		CHECKED	DRAWN	PROJECT NUMBER	
SITE		JM	RM/RT	DRAWING NO.	
LOCATION		C.A.V.H.S., LITTLE ROCK, AR.		Dwg 1 of 1	

NORTH  
02/11/93  
SCALE: 1" = 40'





06-9  
07-9  
05-0  
12-0  
12-0  
07-0  
07-0  
07-0  
04-0  
12-0  
08-1  
12-1

Building access labeled D01 thru D24

## Gate 8

1. Gates 1, 2 & 3 each have (2) Cat5e cables installed from room GC125 on the ground floor to the control panel in GD114G.
2. Gates 6, 7 & 8 each have (2) Cat5e cables installed from room GD114A on the ground floor to the control panel in GD114G
3. Gate 10 has (2) Cat5e cables installed from room GF129 on the ground floor to the control panel in GD114G.

The new gate monitoring system is installed here.

**Gates 6, 7 & 8  
Enter Here**

**Gates 1, 2 & 3  
Enter Here**

**Gate 10  
Enters Here**

## Gate 10

**Gate 2**

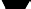
**Gate**

NORTH

SCALE:  $1/16" = 1'$

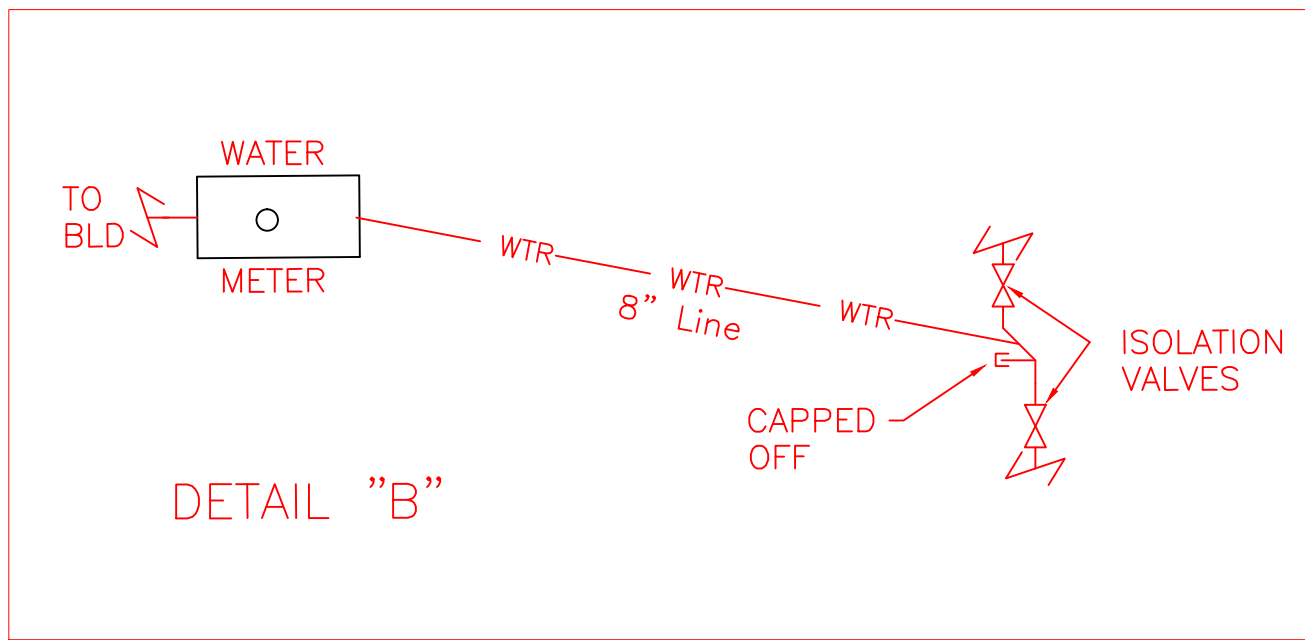
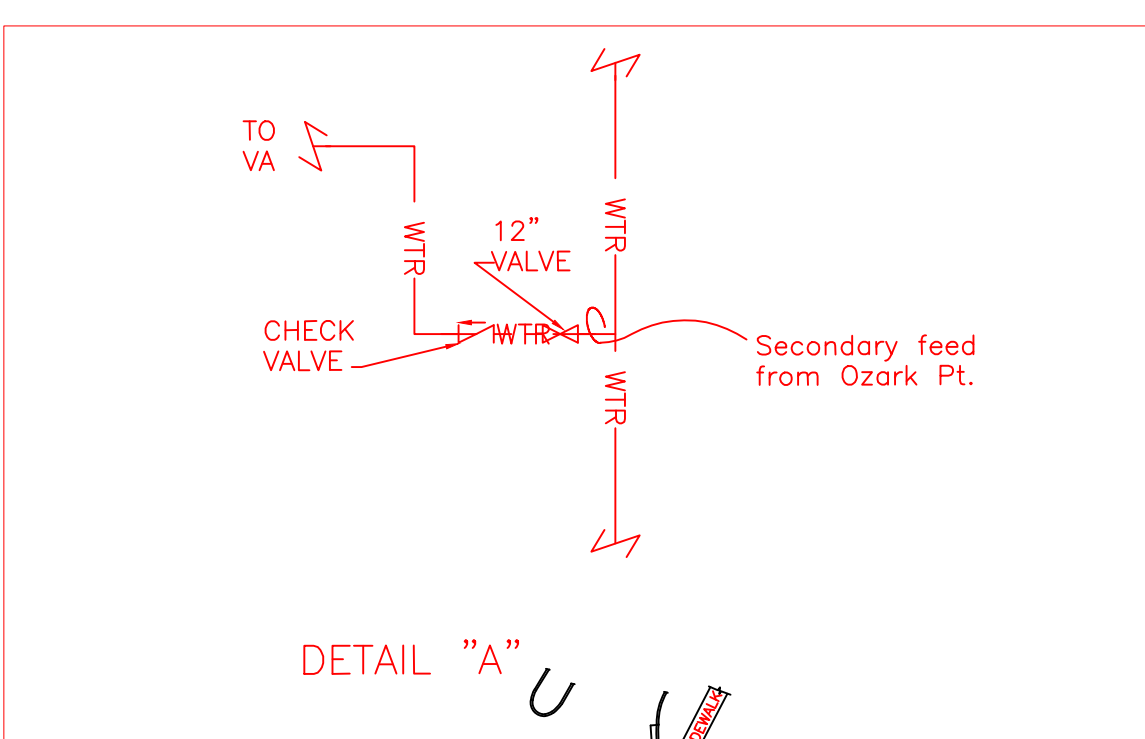
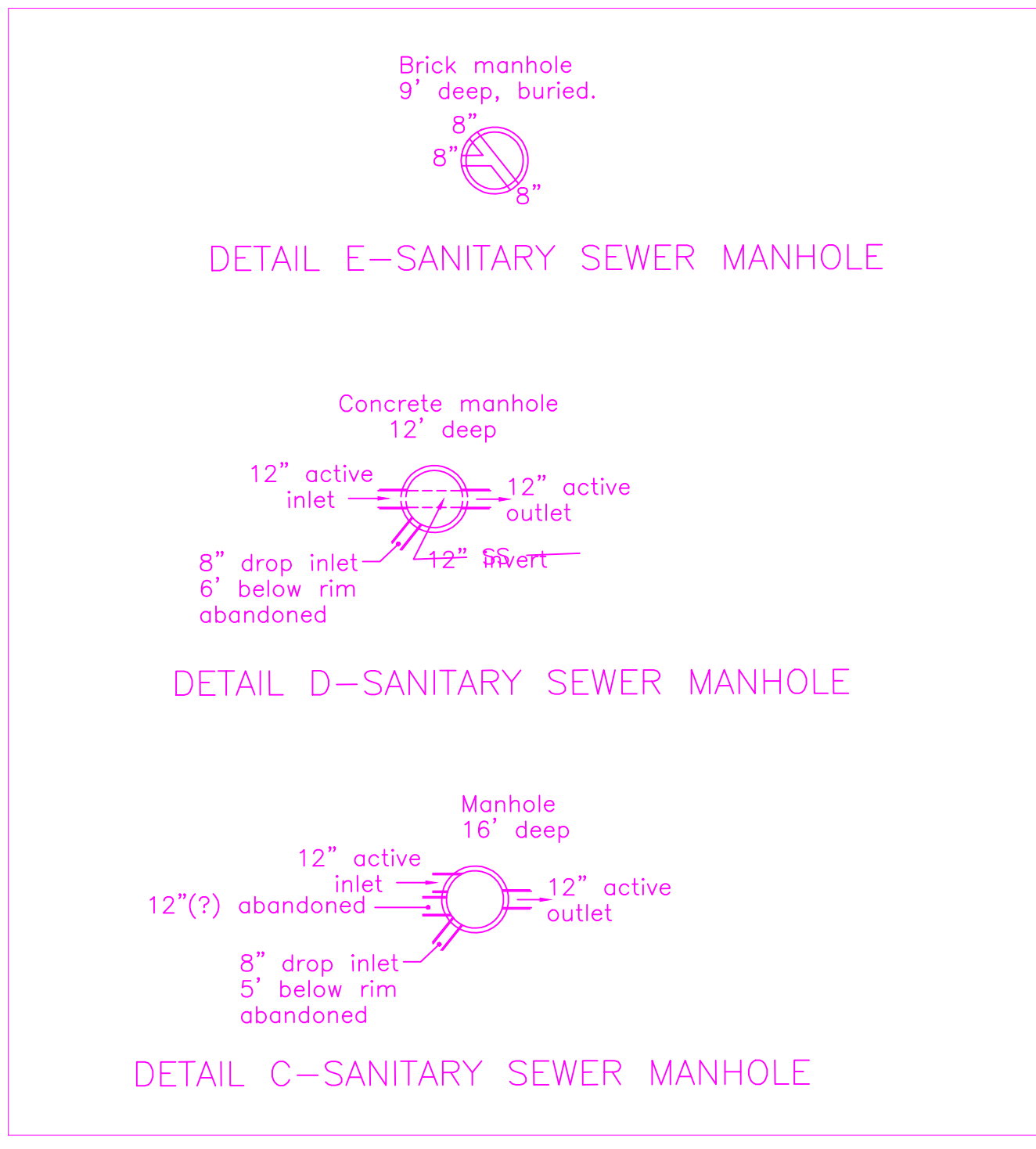


DEPARTMENT OF  
VETERANS AFFAIRS



DEPARTMENT OF  
VETERANS AFFAIRS





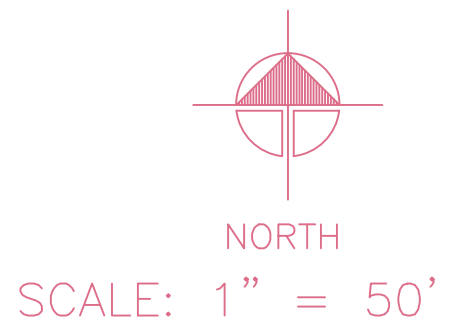
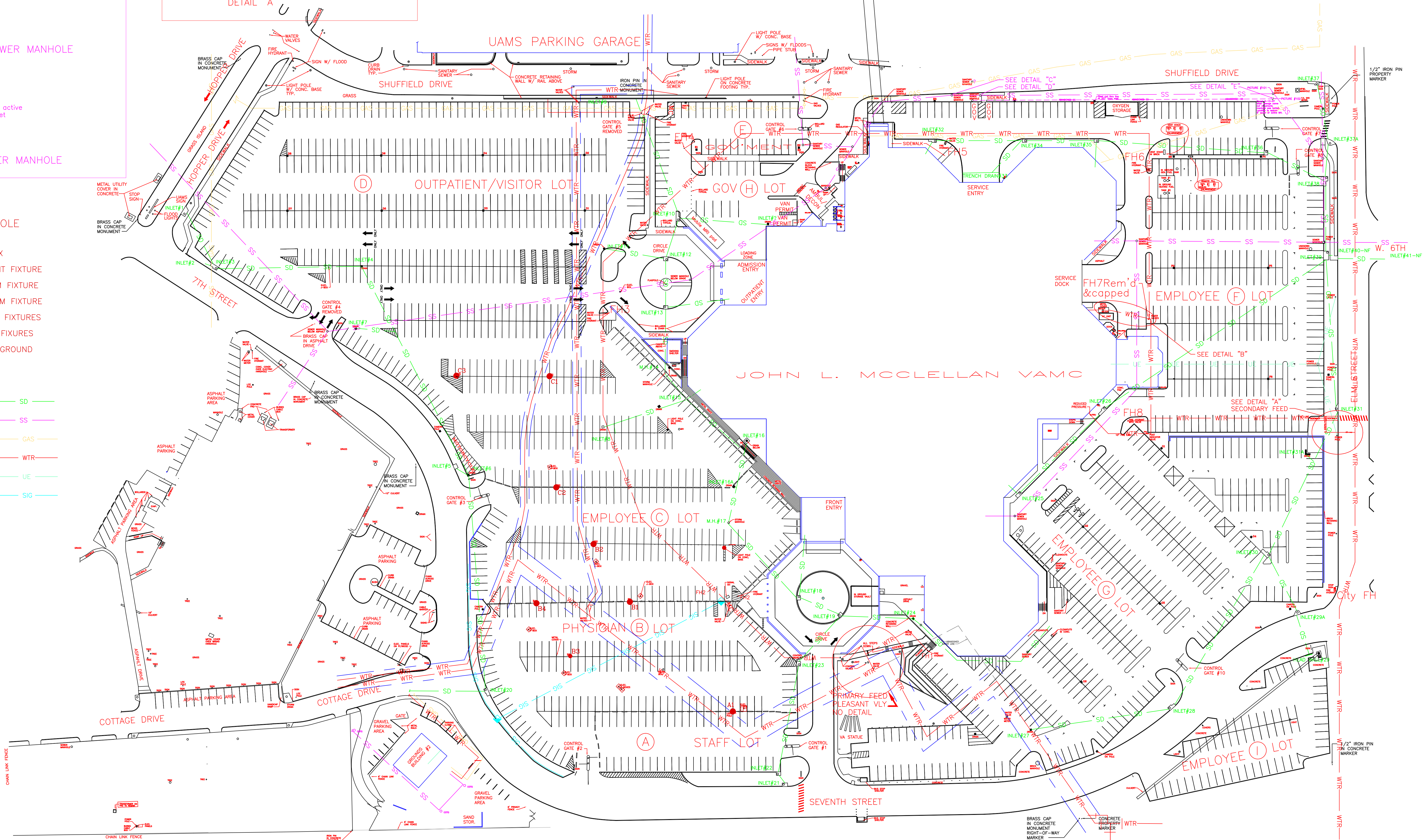
STREET LIGHT POLE LEGEND

- = CONCRETE PULL BOX
- = POLE MOUNTED LIGHT FIXTURE
- = POLE W/SINGLE ARM FIXTURE
- = POLE W/DOUBLE ARM FIXTURE
- = POLE W/THREE ARM FIXTURES
- = POLE W/FOUR ARM FIXTURES
- || = WIRE-2 POLE WITH GROUND
- NF = NOT FOUND

- STORM DRAINAGE
- SD
- SANITARY SEWER
- SS
- GAS LINE
- GAS
- WATER MAIN
- WTR
- ELECTRIC (UG)
- UE
- SIGNAL (UG)
- SIG

SIGNAL LEGEND

- = SIGNAL HANDHOLE



SIGNAL RUN TO 7th STREET FROM GROUND FL.  
INACTIVE SEWER LINE & MANHOLES FOUND  
GAS LINE RELOCATED FOR UAMS EXPANSION  
C.A.W. 36" WATER LINE RELOCATED FOR C.C.E.

11-03  
06-07  
04-08  
12-08

REVISIONS

DATE

DRAWING TITLE

UTILITIES PLAN

PROJECT TITLE

J. L. McCLELLAN V.A.M.C.  
SITE PLAN

BUILDING NUMBER

CHECKED

DRAWN

LOCATION

C.A.V.H.S., LR DIVISION

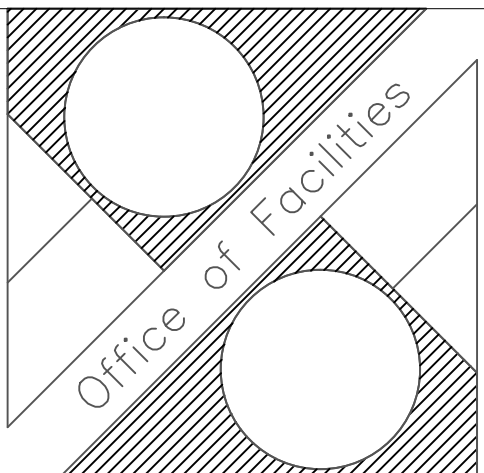
DATE

15 JAN 04

PROJECT NUMBER

DRAWING NO.

Dwg 1 of 1



DEPARTMENT OF  
VETERANS AFFAIRS